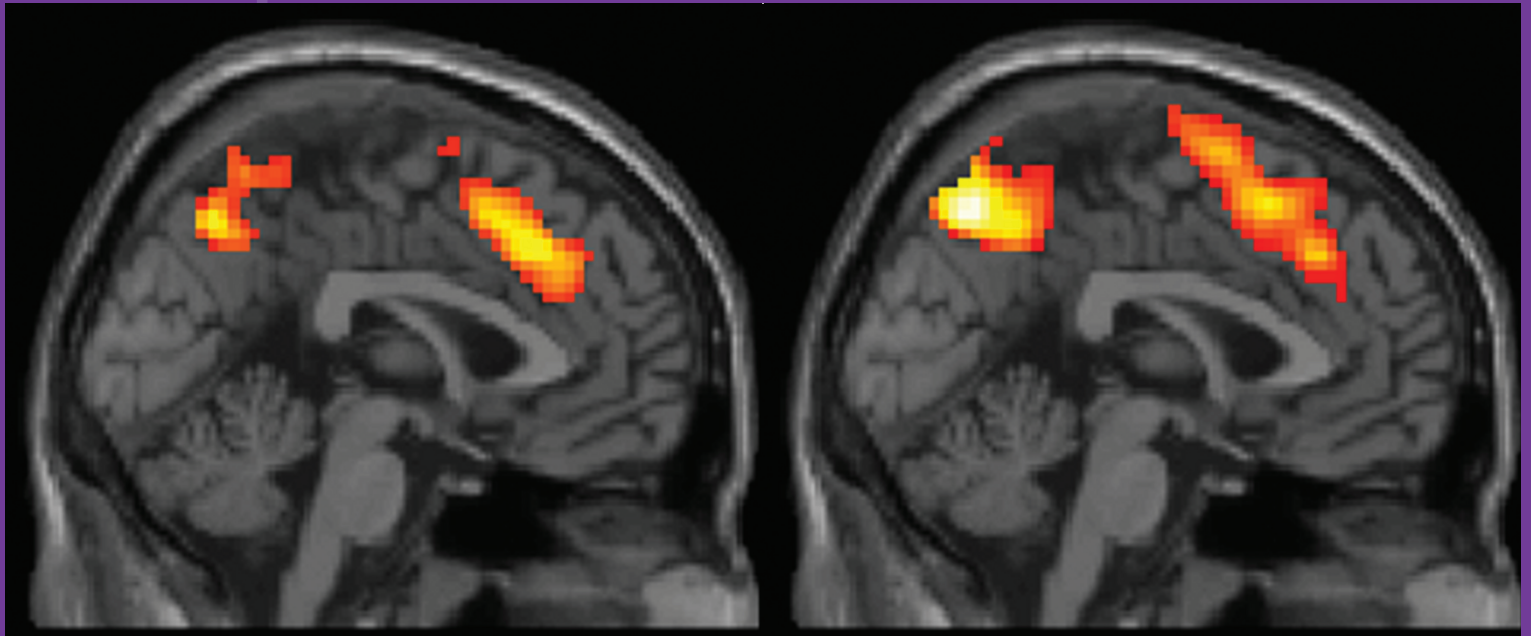


# twin research and human genetics

The official journal of the International Society for Twin Studies and the Human Genetics Society of Australasia



## SPECIAL ISSUE

Genetics of brain structure and function

### Guest Editors

Greig de Zubicaray, Dirk Smit, Jason Stein,  
Dennis van 't Ent

Volume **15** Number **3**

June 2012

Editor

Nicholas G. Martin

IMPACT FACTOR 1.583

[journals.cambridge.org/thg](http://journals.cambridge.org/thg)

**CAMBRIDGE**  
UNIVERSITY PRESS

# twin research and human genetics

The official journal of the  
**International Society  
for Twin Studies** and the  
**Human Genetics Society  
of Australasia**

*Twin Research and Human Genetics* is the official journal of the International Society for Twin Studies and, as such, is the successor journal to *Acta Geneticae Medicae et Gemellologiae*, which was founded in 1952 by Luigi Gedda. He edited it until its cessation in 1998, with Paolo Parisi as Acting Editor and then Executive Editor from 1968 to 1992. *Acta* became the official journal of ISTS when the society was established in 1974. The subtitle *Twin Research* was adopted in 1979. It was published by The Mendel Institute in Rome, except for the years 1979 to 1983, when it was published jointly with Alan R. Liss in New York.

*Twin Research* itself was founded in 1998 by Robert Derom, who edited it in 1998 and 1999. It has been edited by Nick Martin since 2000. It was published by Stockton Press (which became part of Nature Publishing Group) from 1998 to 2000, by Australian Academic Press from 2001 to 2012, and by Cambridge University Press since 2012.

The title *Twin Research and Human Genetics* was adopted from the beginning of Volume 8 in 2005 and is a translation of *Acta Geneticae Medicae et Gemellologiae*, Luigi Gedda's original title.

In 2008, *Twin Research and Human Genetics* was also adopted as the official journal of the Human Genetics Society of Australasia.

## Editor

Nicholas G. Martin, *Brisbane*

## Associate Editors

### AGING

Chandra Reynolds, *Riverside, CA*

### BEHAVIOR GENETICS

Dorret Boomsma, *Amsterdam*

### CHILD DEVELOPMENT

David Hay, *Perth*

### COMPLEX DISEASES

Jaakko Kaprio, *Helsinki*

### ENDOCRINOLOGY

Cornelis Lambalk, *Amsterdam*

### HUMAN GENETICS

Jozef Gecz, *Adelaide*

### NEWS AND VIEWS

Nancy Segal, *Fullerton, CA*

### OBSTETRICS

Louis Keith, *Chicago, IL*

### PSYCHIATRIC GENETICS

Wendy Slutske, *Columbia, MO*

### QUANTITATIVE AND POPULATION GENETICS

Peter Visscher, *Brisbane*

### STATISTICAL MODELING

Michael Neale, *Richmond, VA*

## Book Review Editor

Dorret Boomsma, *Amsterdam*  
di.boomsma@psy.vu.nl

## Editorial Board

Isaac Blickstein, *Rehovot*  
Charles Boklage, *Greenville*  
Andreas Busjahn, *Berlin*  
Michèle Carlier, *Marseille*  
Kaare Christensen, *Odense*  
Catherine Derom, *Leuven*  
Lindon Eaves, *Richmond, Virginia*  
Aldur Eriksson, *Helsinki*  
David Evans, *Bristol*  
Johan Fellman, *Helsinki*  
Jack Goldberg, *Seattle*  
Judith Hall, *Vancouver*  
Jennifer Harris, *Oslo*  
Yoko Imaizumi, *Suita City*  
Kirsten Kyvik, *Odense*  
Barbara Luke, *Miami*  
Nancy Pedersen, *Stockholm*  
Daniel Pérusse, *Montréal*  
Robert Plomin, *London*  
Danielle Posthuma, *Amsterdam*  
Shaun Purcell, *Boston*  
Michael Rutter, *London*  
Roger Short, *Melbourne*  
Tim Spector, *London*  
Antonia Stazi, *Rome*  
Martine Thomis, *Leuven*  
Karen Thorpe, *Brisbane*  
Mark Umstad, *Melbourne*

## Subscription Rates 2012

Individual subscriptions to *Twin Research and Human Genetics* as members of the International Society for Twin Studies (ISTS) and the Human Genetics Society of Australasia (HGSA):

### 1 YEAR INDIVIDUAL SUBSCRIPTION

Full member ..... AUD 180  
Nonprofessional/  
retired member ..... AUD 140  
Student member ..... AUD 100

ISTS membership application or renewal can be made online at <https://genepi.qimr.edu.au/ists/ists.cgi>  
Alternatively, the Word document is available at <http://www.ists.qimr.edu.au>

### INSTITUTIONAL SUBSCRIPTION RATES

This journal is published 6 times per year. The institutional rates (excluding VAT) are:

	Print and online	Electronic Only
Australia	505 AUD	482 AUD
N America	551 USD	526 USD
UK and ROW	356 GBP	339 GBP

EU subscribers (outside the UK) who are not registered for VAT should add VAT at their country's rate. VAT registered subscribers should provide their VAT registration number. Prices include delivery by air when appropriate. Japanese prices for institutions are available from Kinokuniya Company Ltd, P.O. Box 55, Chitose, Tokyo 156, Japan.

### Orders and subscription enquiries should be addressed to:

Cambridge University Press, The Edinburgh Building, Shaftesbury Road, Cambridge CB2 8RY, UK

### Orders from N America should be addressed to:

Cambridge University Press, Journals Fulfillment Department, 100 Brook Hill Drive, West Nyack, NY 10994-2133, USA

*Twin Research and Human Genetics* and all other Cambridge Journals can be found at <http://journals.cambridge.org/>

## ISTS Website

[www.ists.qimr.edu.au](http://www.ists.qimr.edu.au)

## Indexing/Abstracting

This journal is indexed in the following databases: MEDLINE/PubMed, EMBASE/Excerpta Medica, PsycINFO, Science Citation Index®, Journal Citation Reports/Science Edition, Science Citation Index Expanded® (available as the ISI Web of Science®), Current Contents®/Clinical Medicine, Current Contents®/Life Sciences

## E-mail Address for Manuscript Submission

See inside back cover for author instructions.

### Editorial Office

Nicholas G. Martin  
Editor  
*Twin Research and Human Genetics*  
Queensland Institute of Medical Research  
Brisbane Qld 4029 Australia  
E-mail: [ists@qimr.edu.au](mailto:ists@qimr.edu.au)

Cover image: Functional MRI images of a pair of MZ twins imaged while performing the nBack working memory task, courtesy of Gabriëlla Blokland.

Covering all areas of  
human genetics  
with an emphasis on  
twin studies, genetic  
epidemiology, psychiatric  
and behavioral genetics,  
and research on  
multiple births in the  
fields of epidemiology,  
genetics, endocrinology,  
fetal pathology, obstetrics  
and pediatrics.

*Twin Research and Human Genetics* is published six times annually and issued to all financial ordinary, institutional and student members of ISTS and HGSA.

**Copyright** in all articles rests with authors. A limited set of permanent copyright permission licences has been granted by authors to the publisher to allow publication in this journal. Rights in the reproduction and distribution of the published articles as visual facsimiles of this published edition by either mechanical or digital means is controlled by the publisher and any distributions by CAL for copying of an author's work are due to the publisher in the first instance. All other rights in the words contained in this edition are controlled by the authors. Authors are therefore free to adapt and/or republish the words making up their own articles either online or in print.

Published by Cambridge University Press on behalf of Australian Academic Press Pty Ltd. and the International Society of Twin Studies.  
Cambridge University Press,  
The Edinburgh Building  
Shaftesbury Road  
Cambridge CB2 8RU, UK  
[www.journals.cambridge.org/uk](http://www.journals.cambridge.org/uk)

## Guest Editorial

- Neuroimaging and Genetics: Exploring, Searching, and Finding **267**  
*Dirk J. A. Smit, Dennis van 't Ent, Greig de Zubicaray and Jason L. Stein*

## Articles

- Associations Between Variants Near a Monoaminergic Pathways Gene (PHOX2B) and Amygdala Reactivity: A Genome-Wide Functional Imaging Study **273**  
*Olga Therese Ousdal, Andrew Anand Brown, Jimmy Jensen, Per H. Nakstad, Ingrid Melle, Ingrid Agartz, Srdjan Djurovic, Ryan Bogdan, Ahmad R. Hariri and Ole A. Andreassen*
- Alzheimer's Disease Risk Gene, GAB2, is Associated with Regional Brain Volume Differences in 755 Young Healthy Twins **286**  
*Derrek P. Hibar, Neda Jahanshad, Jason L. Stein, Omid Kohannim, Arthur W. Toga, Sarah E. Medland, Narelle K. Hansell, Katie L. McMahon, Greig I. de Zubicaray, Grant W. Montgomery, Nicholas G. Martin, Margaret J. Wright and Paul M. Thompson*
- The Effect of the Neurogranin Schizophrenia Risk Variant rs12807809 on Brain Structure and Function **296**  
*Emma J. Rose, Derek W. Morris, Ciara Fahey, Ian H. Robertson, Ciara Greene, John O'Doherty, Fiona N. Newell, Hugh Garavan, Jane McGrath, Arun Bokde, Daniela Tropea, Michael Gill, Aiden P. Corvin and Gary Donohoe*
- A Comparison of Heritability Maps of Cortical Surface Area and Thickness and the Influence of Adjustment for Whole Brain Measures: A Magnetic Resonance Imaging Twin Study **304**  
*Lisa T. Eyster, Chi-Hua Chen, Matthew S. Panizzon, Christine Fennema-Notestine, Michael C. Neale, Amy Jak, Terry L. Jernigan, Bruce Fischl, Carol E. Franz, Michael J. Lyons, Michael Grant, Elizabeth Prom-Wormley, Larry J. Seidman and Ming T. Tsuang*
- Genetic Contributions to the Midsagittal Area of the Corpus Callosum **315**  
*Kimberley A. Phillips, Jeffrey Rogers, Elizabeth A. Barrett, David C. Glahn and Peter Kochunov*
- Heritability of Multivariate Gray Matter Measures in Schizophrenia **324**  
*Jessica A. Turner, Vince D. Calhoun, Andrew Michael, Theo G. M. van Erp, Stefan Ehrlich, Judith M. Segall, Randy L. Gollub, John Csernansky, Steven G. Potkin, Beng-Choon Ho, Juan Bustillo, S. Charles Schulz, FBIRN and Lei Wang*
- White Matter Heritability Using Diffusion Tensor Imaging in Neonatal Brains **336**  
*Xiujuan Geng, Elizabeth C. Prom-Wormley, Javier Perez, Thomas Kubarych, Martin Styner, Weili Lin, Michael C. Neale and John H. Gilmore*
- Genetic and Environmental Influences on Neuroimaging Phenotypes: A Meta-Analytical Perspective on Twin Imaging Studies **351**  
*Gabriella A. M. Blokland, Greig I. de Zubicaray, Katie L. McMahon and Margaret J. Wright*
- Brain Activation During Response Interference in Twins Discordant or Concordant for Obsessive Compulsive Symptoms **372**  
*Anouk den Braber, Dennis van 't Ent, Danielle C. Cath, Dick J. Veltman, Dorret I. Boomsma and Eco J. C. de Geus*
- Individual Differences in EEG Spectral Power Reflect Genetic Variance in Gray and White Matter Volumes **384**  
*Dirk J. A. Smit, Dorret I. Boomsma, Hugo G. Schnack, Hilleke E. Hulshoff Pol and Eco J. C. de Geus*

(CONTINUED OVER)

# contents

continued

Estimation of Subject-Specific Heritabilities From Intra-Individual Variation: iFACE <i>Peter C. M. Molenaar, Dirk J. A. Smit, Dorret I. Boomsma and John R. Nesselroade</i>	393
Cerebral Asymmetry: A Quantitative, Multifactorial, and Plastic Brain Phenotype <i>Miguel E. Rentería</i>	401
EnigmaVis: Online Interactive Visualization of Genome-Wide Association Studies of the Enhancing NeuroImaging Genetics through Meta-Analysis (ENIGMA) Consortium <i>Nic M. Novak, Jason L. Stein, Sarah E. Medland, Derrek P. Hibar, Paul M. Thompson and Arthur W. Toga</i>	414
The TWIN-E Project in Emotional Wellbeing: Study Protocol and Preliminary Heritability Results Across Four MRI and DTI Measures <i>Justine M. Gatt, Mayuresh S. Korgaonkar, Peter R. Schofield, Anthony Harris, C. Richard Clark, Karen L. Oakley, Kaushik Ram, Hope Michaelson, Sarsha Yap, Melinda Stanners, Vikki Wise and Leanne M. Williams</i>	419
Imaging and Cognitive Genetics: The Norwegian Cognitive NeuroGenetics Sample <i>Thomas Espeseth, Andrea Christoforou, Astri J. Lundervold, Vidar M. Steen, Stephanie Le Hellard and Ivar Reinvang</i>	442
Brain SCALE: Brain Structure and Cognition: an Adolescent Longitudinal Twin Study into the Genetic Etiology of Individual Differences <i>Inge L. C. van Soelen, Rachel M. Brouwer, Jiska S. Peper, Marieke van Leeuwen, Marinka M. G. Koenis, Toos C. E. M. van Beijsterveldt, Suzanne C. Swagerman, René S. Kahn, Hilleke E. Hulshoff Pol and Dorret I. Boomsma</i>	453
<b>News, Views, and Comments</b>	
Solvent Exposure and Parkinson's Disease: Co-Twin Control Study/ Twin Research Reports / Human Interest Stories <i>Nancy L. Segal</i>	468