

Large outbreak of Legionnaires' disease and Pontiac fever at a military base

J. AMBROSE¹, L. M. HAMPTON^{2,3*}, K. E. FLEMING-DUTRA^{2,3}, C. MARTEN⁴,
C. McCLUSKY⁵, C. PERRY¹, N. A. CLEMMONS¹, Z. McCORMIC¹, S. PEIK¹,
J. MANCUSO¹, E. BROWN³, N. KOZAK³, T. TRAVIS³, C. LUCAS³, B. FIELDS³,
L. HICKS³ AND S. B. CERSOVSKY¹

¹ U.S. Army Public Health Command, Aberdeen Proving Ground, MD, USA

² Epidemic Intelligence Service, Centers for Disease Control and Prevention, Atlanta, GA, USA

³ Respiratory Diseases Branch, Centers for Disease Control and Prevention, Atlanta, GA, USA

⁴ Michigan Department of Community Health, Lansing, MI, USA

⁵ Michigan Air National Guard, Harrison Township, MI, USA

Received 1 August 2013; Final revision 22 November 2013; Accepted 11 December 2013;
first published online 30 January 2014

SUMMARY

We investigated a mixed outbreak of Legionnaires' disease (LD) and Pontiac fever (PF) at a military base to identify the outbreak's environmental source as well as known legionellosis risk factors. Base workers with possible legionellosis were interviewed and, if consenting, underwent testing for legionellosis. A retrospective cohort study collected information on occupants of the buildings closest to the outbreak source. We identified 29 confirmed and probable LD and 38 PF cases. All cases were exposed to airborne pathogens from a cooling tower. Occupants of the building closest to the cooling tower were 6·9 [95% confidence interval (CI) 2·2–22·0] and 5·5 (95% CI 2·1–14·5) times more likely to develop LD and PF, respectively, than occupants of the next closest building. Thorough preventive measures and aggressive responses to outbreaks, including searching for PF cases in mixed legionellosis outbreaks, are essential for legionellosis control.

Key words: Community outbreaks, *Legionella*, Legionnaire's disease, legionellosis (Pontiac fever).

INTRODUCTION

Between 2000 and 2009, the annual number of reported cases of legionellosis in the USA more than tripled from 1110 to 3522 [1]. Of the legionellosis cases reported with detailed diagnoses, 99·5% were Legionnaires' disease (LD), a type of pneumonia with a high case-fatality rate, while the remaining 0·5% of legionellosis cases took the form of Pontiac

fever (PF), an influenza-like, self-limiting illness. Although most legionellosis cases are not associated with known outbreaks, legionellosis outbreaks can be highly disruptive and costly to the facilities and communities affected [2–4]. Reported legionellosis outbreaks with both LD and PF cases are relatively rare [5], and most known outbreaks in which both legionellosis syndromes were documented had no more than a few LD cases [2, 3, 6–16].

On 19 July 2010, reports of illness of unknown aetiology in eight employees were received by the occupational health staff at military base A. Over the next several days additional illnesses with similar symptoms were reported in employees who worked

* Author for correspondence: L. M. Hampton, M.D., M.Sc., Centers for Disease Control and Prevention, 1600 Clifton Road, MS A-24, Atlanta, GA 30329 USA.
(Email: lhampton@cdc.gov)

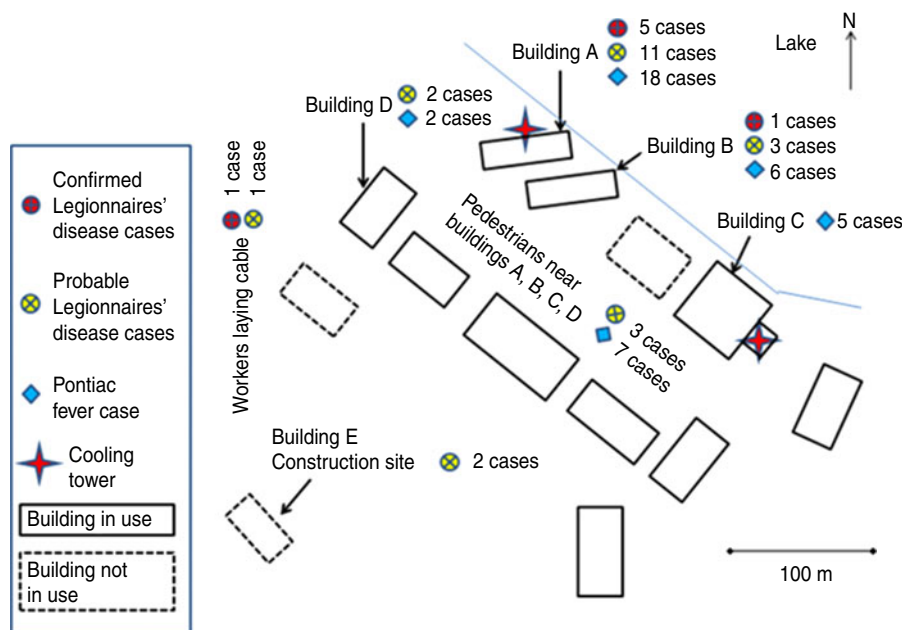


Fig. 1 [colour online]. Legionnaires' disease and Pontiac fever cases and possible sources of the outbreak, military base A, July–August 2010.

in the same area as the original eight cases. On 22 July, buildings A and B, the two buildings most affected by the outbreak (Fig. 1), were evacuated. Laboratory testing of specimens from two of the ill persons confirmed a diagnosis of LD on 26 July. A team consisting of personnel from U.S. Army Public Health Command, the Michigan Air National Guard, the Michigan Department of Community Health, and the Centers for Disease Control and Prevention (CDC) investigated the outbreak in order to characterize cases, identify the outbreak's source and scope, and recommend interventions to prevent future cases.

METHODS

Outbreak threshold

In the USA, a location that has no history of previous legionellosis outbreaks and does not provide healthcare is generally considered to have a legionellosis outbreak if two or more individuals develop legionellosis after being exposed to that location at around the same time [17, 18].

Case definitions and case finding

A confirmed case of LD was defined as radiographically confirmed pneumonia with laboratory evidence

of *Legionella* infection in a person with onset of illness between 1 July 2010 and 12 August 2010 and within 10 days of exposure to the base's eastern office complex (Fig. 1). Laboratory evidence of *Legionella* infection included at least one of the following: isolation through culture of any *Legionella* organism from respiratory secretions, lung tissue, pleural fluid, or other normally sterile fluid; detection of *Legionella pneumophila* serogroup 1 antigen in urine; or seroconversion, specifically a \geq fourfold rise in specific serum antibody titre to *L. pneumophila* serogroup 1 between acute and convalescent titres. An individual was considered to have been exposed to the eastern office complex if they reported spending any time in or immediately adjacent to that area. The focus on the base's eastern office complex was due initially to the distribution of the first identified cases and ultimately to the lack of any laboratory-confirmed legionellosis in base workers who had not been exposed to that area. A probable case of LD was defined as radiographically confirmed pneumonia without laboratory confirmation of *Legionella* infection in a person with onset of illness on or after 1 July 2010 and within 10 days of exposure to the eastern office complex. PF cases were defined as fever, either subjective or measured, in a person with onset of illness on or after 1 July 2010 and within 3 days of exposure to the eastern office complex, and with at least one of the following

symptoms: headache, cough, shortness of breath, myalgia, vomiting, and/or diarrhoea.

LD and PF cases were identified in part through mandatory reporting of legionellosis cases from health-care providers and laboratories to area public health authorities [19]. Medical records were abstracted for all hospitalized cases using a standardized data abstraction form. In addition, military units on the 5.6 square-mile base conducted active surveillance for employees with recent illness. Employees with recent illnesses were interviewed with screening questionnaires to determine if they had symptoms consistent with legionellosis. Base employees who were reported to local health departments as having legionellosis or who reported recent symptoms consistent with either form of legionellosis on the screening questionnaire were interviewed using a detailed standardized questionnaire that captured information on demographics, medical history, recent illnesses, symptoms, medical diagnosis and treatment, and exposures on and off the base.

Retrospective cohort study

The cohort study included all persons who were working in buildings A and B, the buildings in the base's eastern office complex (Fig. 1) that were most affected by the outbreak immediately prior to their evacuation on 22 July. Standardized questionnaires similar to those used to interview ill base employees were administered.

Clinical laboratory methods

Clinical sputum specimens from two hospitalized base employees were retrieved from clinical laboratories and tested at the CDC *Legionella* laboratory. Once *Legionella* were cultured from a specimen, the species, serogroup, and monoclonal antibody (MAb) patterns [20, 21] of the isolate were determined. Sequence-based typing was also performed to further characterize isolates according to seven-gene profiles of select isolates (*flaA*, *pilE*, *asd*, *mip*, *mompS*, *proA*, *neuA*) [22, 23]. Consenting base employees with recent illnesses consistent with legionellosis provided urine samples for *L. pneumophila* serogroup 1 urine antigen testing, which was performed at the Walter Reed Army Institute of Research (WRAIR) using the BinaxNOW *Legionella* urinary antigen kit (Alere Inc., USA). Some urine samples were collected before the employees were seen by medical providers for their illnesses.

Environmental investigation

An environmental assessment was conducted to identify the locations of all possible sources of warm, aerosolized water in the base's eastern office complex. The maintenance, environmental testing, and treatment histories of likely sources of the outbreak, including all potable water systems, were reviewed with local engineers and base contractors. In addition, the temperature, free chlorine concentration, and pH of water found in these sources were measured. The base environmental science officers provided detailed meteorological data for June and July 2010, including hourly temperature, wind speed, and wind direction. Daily base precipitation, mean temperature, and mean dew-point data for June, July, and August 2010 were also obtained from the National Climatic Data Center (NCDC) [24].

Bulk water and biofilm swab samples were collected from two cooling towers in the base's eastern office complex on 6 August 2010. The samples were tested at the CDC *Legionella* laboratory using previously published standard procedures [25]. The swab samples and filtered bulk-water samples were plated on buffered charcoal-yeast extract (BCYE) media with and without antibiotics and with and without acid treatment. Plates were incubated at 35 °C in 2.5% CO₂. Suspected *Legionella* colonies were verified on biplates, and *L. pneumophila* species underwent serogrouping [26]. MAb pattern determination and sequence-based typing were also performed on *Legionella* isolates if they were the same species and serogroup as clinical isolates [21, 27].

Statistical analysis

Team members on site entered patient data and survey responses into a database developed with Snap survey software, version 10 (Snap Surveys, UK). Analyses were performed with SAS software, version 9.2 (SAS Institute Inc., USA). Relative risks (RRs) and 95% confidence intervals (CIs) were calculated for exposure variables. Confirmed and probable LD cases were analysed separately and together. Multivariate logistic regression was performed and included all variables identified as being statistically significant ($P < 0.05$) during univariate analysis. The multivariate models assessed whether the likelihood of developing LD *vs.* not developing legionellosis and the likelihood of developing PF *vs.* not developing legionellosis in members of buildings A and B cohorts were affected

Table 1. Characteristics of cases with confirmed Legionnaires' disease (LD), probable LD, and Pontiac fever

Characteristics	Confirmed LD (n=7)	Probable LD (n=22)	Confirmed + probable LD (n=29)	Pontiac fever (n=38)
Number hospitalized (%)	7 (100)	6 (27)	13 (45)	1 (3)
Number of sputum cultures, positive/performed (%)	1/1 (100)	0/1 (0)	1/2 (50)	0/0 (0)
Number of urine antigen tests, positive/performed (%)	7/7 (100)	0/15 (0)	7/21 (33)	1/14 (7)
Median age, yr (range)	61 (49–63)	48 (27–63)	50 (27–63)	48 (24–61)
Number of males (%)	5 (71)	18 (82)	23 (79)	19 (50)
Number of smokers (%)	2 (29)	7 (32)	9 (31)	11 (29)
Number with a chronic illness (%)	3 (43)	10 (45)	13 (45)	13 (34)

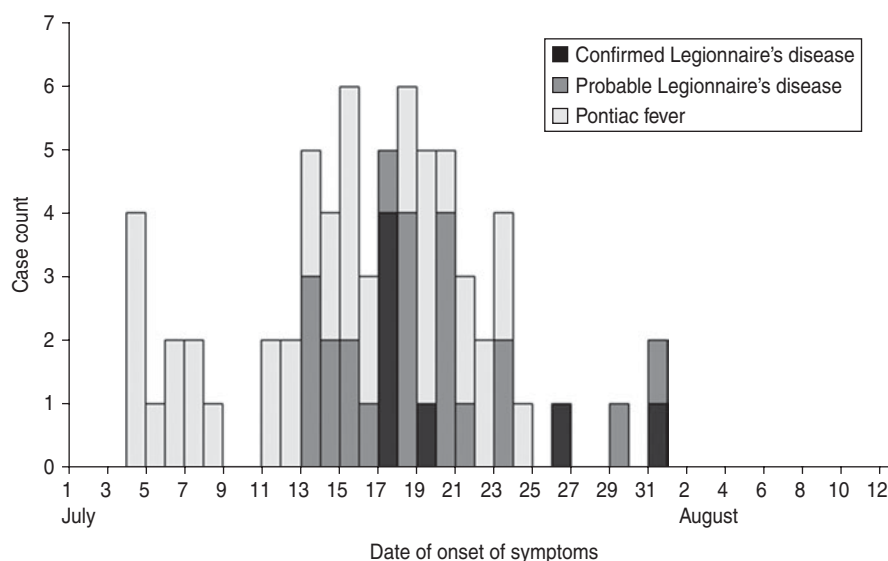


Fig. 2. Epidemic curve of legionellosis outbreak at military base A.

by building exposure, age, or reported history of any chronic diseases. Times between patients' first medical visit for their legionellosis and the date of urine antigen sample collection were compared using the exact Wilcoxon rank-sum test. The difference between the date of the first medical visit and the urine antigen sample collection was set to zero in the multivariate models if patients provided urine antigen samples prior to seeking medical care. The base's daily mean relative humidity was calculated using the daily mean temperature and dew point provided by the NCDC and formulae detailed by Ricketts *et al.* [28, 29].

Human subjects determination

This study was determined to be an emergency public health investigation exempt from institutional review board (IRB) review.

RESULTS

Case finding

We identified seven confirmed LD cases, 22 probable LD cases, and 38 PF cases (Table 1), all with exposure to the eastern office complex (Fig. 1). All 29 confirmed and probable LD cases had onset of symptoms within an 18-day period, with a peak of five confirmed and probable LD cases having symptom onset on 17 July (Fig. 2). Although seven (100%) confirmed and six (27%) probable LD cases were hospitalized, no deaths resulted from the outbreak (Table 1). LD patients were significantly more likely than PF patients to report shortness of breath (RR 1.6, 95% CI 1.2–2.2) and abdominal pain (RR 1.9, 95% CI 1.1–3.3) (Table 2).

All individuals with laboratory-confirmed legionellosis associated with the base had exposure to the

Table 2. *Symptoms of Legionnaires' disease and Pontiac fever cases*

Symptom	No. (%) of Legionnaires' disease cases	No. (%) of Pontiac fever cases	RR (95% CI) of symptom, Legionnaires' disease vs. Pontiac fever
Fever	29 (100)	38 (100)	1.0
Headache	27 (93)	34 (89)	1.0 (0.9–1.2)
Shortness of breath	26 (90)	21 (55)	1.6 (1.2–2.2)
Cough	24 (83)	26 (68)	1.2 (0.9–1.6)
Muscle aches	23 (82)	30 (79)	1.0 (0.8–1.3)
Chest discomfort	22 (79)	21 (55)	1.4 (1.0–2.0)
Abdominal pain	17 (61)	12 (32)	1.9 (1.1–3.3)
Diarrhoea	15 (54)	15 (39)	1.4 (0.8–2.3)
Vomiting	11 (38)	10 (26)	1.4 (0.7–2.8)
Disorientation	10 (36)	10 (26)	1.4 (0.7–2.8)

RR, Relative risk; CI, confidence interval.

eastern office complex. Among the occupants of buildings A, B, and C, there were 34 (five confirmed LD, 11 probable LD, 18 PF), 10 (one confirmed LD, three probable LD, six PF), and five (all PF) legionellosis cases, respectively (Fig. 1). The remaining 18 legionellosis cases (one confirmed LD, eight probable LD, nine PF), occurred in individuals who primarily worked outdoors. These included two probable LD and two PF cases in military police based at building D, two probable LD cases in contractors working outdoors on a building E construction project, and one confirmed and one probable LD case in base maintenance workers laying cable to the building E site along the western edge of the eastern office complex. None of the maintenance staff working in other areas of the base during the outbreak reported illnesses. At least one patient with confirmed LD and ten patients with probable LD stated that they did not enter building A during their LD incubation periods. The last two cases of LD and the last case of PF had onset of symptoms 9 days and 2 days, respectively, after the 22 July evacuation of buildings A and B. No cases occurred in occupants of buildings A and B, which were reoccupied in September 2010, after the remediation of the outbreak source.

Cohort study

Of the 369 people working in buildings A and B at the beginning of the outbreak, 267 (72%) participated in the cohort study. Occupants of building A had a RR of 6.3 (95% CI 2.2–18.4) for developing LD and a RR of 4.7 (95% CI 1.9–11.5) for developing PF compared to occupants of building B (Table 3). Compared to younger persons, individuals aged

≥ 50 years had RRs of 3.6 (95% CI 1.5–8.8) for developing LD and 2.0 (95% CI 1.0–4.4) for developing PF. Reporting a history of any chronic disease carried RRs of 2.5 (95% CI 1.1–5.7) for LD and 1.8 (95% CI 0.8–3.9) for PF. Multivariate analysis indicated that only being an occupant of building A was significantly associated with an increased risk of LD [adjusted odds ratio (aOR) 6.9, 95% CI 2.2–22.0] and PF (aOR 5.5, 95% CI 2.1–14.5). Patients' characteristics were not associated with a greater risk of developing LD relative to PF (data not shown).

Clinical laboratory results

Of the two sputum samples tested, one specimen of poor quality was negative for growth on culture after 14 days, but the other was successfully cultured for *L. pneumophila*. This isolate was determined to be *L. pneumophila* serogroup 1, type Knoxville 1 MAb pattern (1, 2, 3) with sequence type (ST) 222.

Based on chart review and urine specimen testing at WRAIR, all seven confirmed LD cases and one PF case had positive urine antigen tests (Table 1), while 14 probable LD cases and 13 PF cases had negative urine antigen tests. Urine specimens from five confirmed LD cases, ten probable LD cases, and seven PF cases had both a known date of urine sample collection and a known date of the patient's first receiving medical care for legionellosis. The samples from confirmed LD cases were collected a median of 2 days (range 0–23) after the first visit for legionellosis-related medical care, while the negative samples from probable LD cases were collected a median of 14 days (range –4 to 25) after the first medical visit ($P=0.19$). The positive sample from a

Table 3. Risk factors for development of Legionnaires' disease (LD) or Pontiac fever (PF) instead of remaining unaffected, buildings A and B cohorts

Characteristic	No. (%) with LD	No. (%) with PF	No. (%) unaffected	Univariate RR of LD (95% CI)	Univariate RR of PF (95% CI)	LD aOR (95% CI)	PF aOR (95% CI)
Building A occupant*	16 (14)	18 (16)	78 (70)	6.3 (2.2–18.4)	4.7 (1.9–11.5)	6.9 (2.2–22)	5.5 (2.1–14.5)
Building B occupant*	4 (3)	6 (4)	145 (94)	Referent	Referent	Referent	Referent
Male	14 (8)	14 (8)	150 (84)	1.1 (0.4–2.8)	0.7 (0.3–1.5)	n.a.	n.a.
Female	6 (7)	10 (11)	73 (82)	Referent	Referent	n.a.	n.a.
Age ≥50 years*	13 (14)	12 (13)	69 (73)	3.6 (1.5–8.8)	2 (1.0–4.4)	2.7 (0.9–8.0)	1.7 (0.7–4.4)
Age <50 years*	7 (4)	12 (7)	154 (89)	Referent	Referent	Referent	Referent
Current smoker	7 (13)	6 (11)	41 (76)	2.2 (0.9–5.2)	1.4 (0.6–3.4)	n.a.	n.a.
Current non-smoker	13 (6)	18 (8)	182 (85)	Referent	Referent	n.a.	n.a.
Reported history of any chronic disease*	10 (13)	10 (12)	60 (75)	2.5 (1.1–5.7)	1.8 (0.8–3.9)	1.9 (0.7–5.7)	1.7 (0.6–4.4)
No reported history of chronic disease*	10 (5)	14 (7)	163 (87)	Referent	Referent	Referent	Referent

RR, Relative risk; CI, confidence interval; aOR, adjusted odds ratio; n.a., not applicable.

PF cases were excluded from the calculations of whether characteristics were associated with an increased risk of developing LD instead of remaining unaffected and LD cases were excluded from the equivalent calculations for PF.

* Characteristic used in multivariate models calculating aORs for whether individuals with specified characteristics developed LD instead of remaining unaffected or developed PF instead of remaining unaffected.

PF case was collected the same day as the patient's first medical visit while the negative samples from PF cases were collected a median of 12 days (range –2 to 27) after the first medical visit ($P=0.43$). All of the LD cases with known dates of first medical visit for legionellosis and at least seven of the PF cases with known first legionellosis medical visit dates received antibiotics.

Environmental investigation

Two water-based cooling towers, equipped with drift eliminators to prevent the spread of water droplets, were located in the base's eastern office complex. One was exposed to the elements at ground level outside building A and the other was inside building C (Fig. 1). All other buildings on base used air-based cooling systems. The two water-based cooling towers were typically turned off and drained during the winter. Building A's cooling tower had been restarted on 19 June while building C's tower had been reactivated earlier in spring 2010. The occupants of building A reported that the building was warm even after the cooling tower was restarted, leading many employees to leave their office windows open. Each building on base had a separate potable water system supplied by the base water system, which in turn received water from the local municipality. No whirlpool spas or decorative fountains were located on the base.

Since the distribution and timing of cases suggested that airborne spread of *Legionella* from one of the cooling towers was the most likely cause of the outbreak, the environmental testing focused on these towers. At the time of sample collection, building A's cooling tower water temperature was 26.5 °C while building C's cooling tower water temperature was 34.0 °C. No chlorine was detected in the water of either cooling tower. *L. pneumophila* serogroup 4 was recovered from building C's cooling tower while *L. pneumophila* serogroup 1, type Knoxville 1 MAb pattern (1, 2, 3) with ST222 was found in building A's cooling tower, which matched the *L. pneumophila* isolated from a case sputum sample.

The base experienced a large amount of rainfall on 11 and 12 July, which preceded the beginning of the cluster of LD cases by 1–2 days (Fig. 3a). The second and third highest daily average relative humidity readings for the 30 days after the restart of building A's cooling tower were on 12 and 13 July, at 85% and 86%, respectively (Fig. 3b). Other clusters of high relative humidity followed on 18–20 July and

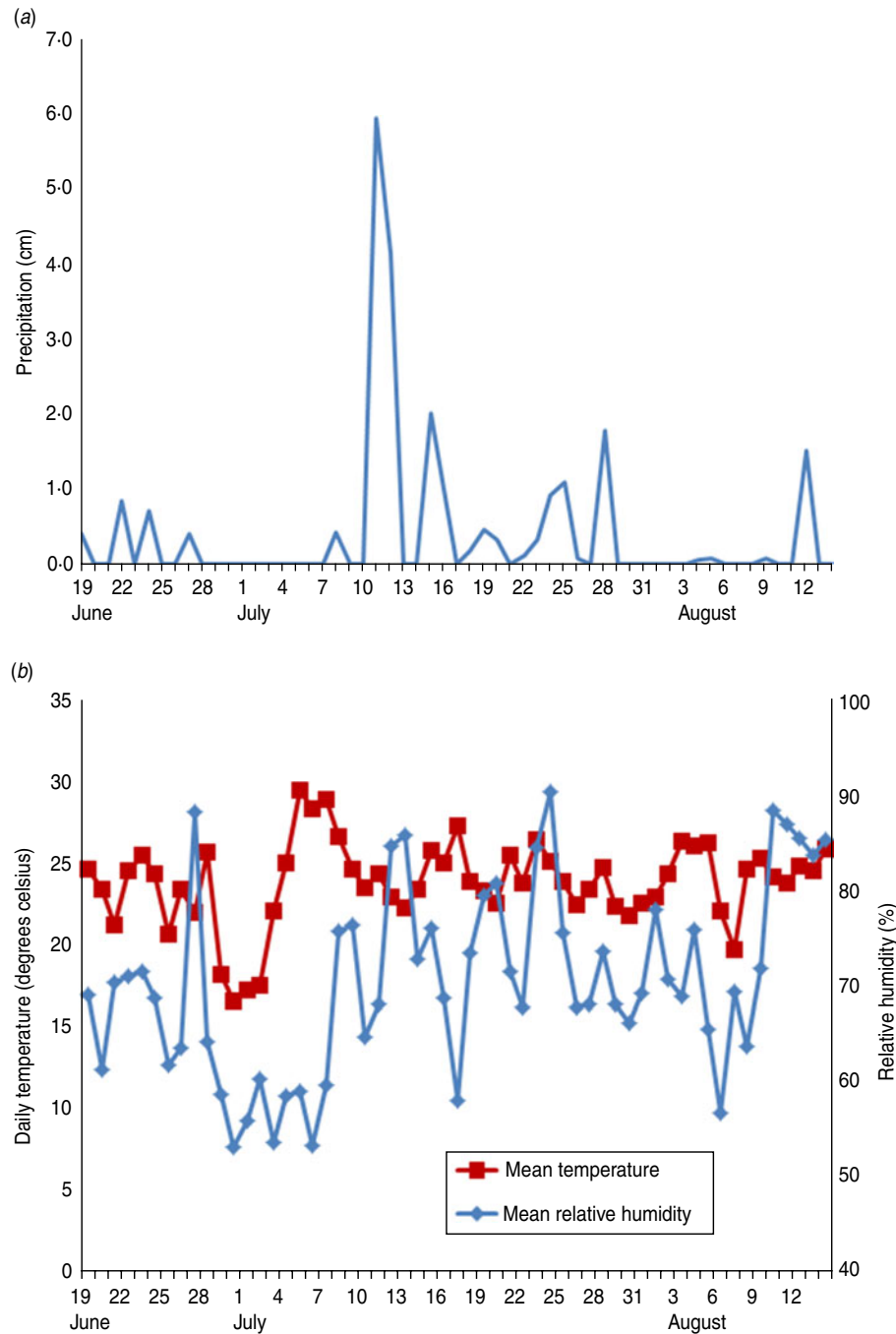


Fig. 3 [colour online]. (a) Precipitation and (b) daily mean temperature and relative humidity at military base A, 19 June–14 August 2010.

23–24 July. In addition, much of July 2010 was quite warm, with 3–18, 21–24, and 26–28 July all having maximum daily outdoor temperatures above 26.7 °C. Between 1 and 25 July 2010 the wind at the base often travelled to the south and west; thus, the wind came from the lake and travelled past building A’s cooling tower towards buildings A and B and the eastern office complex (Fig. 1).

DISCUSSION

A single source caused 29 confirmed and probable LD cases as well as 38 PF cases and disrupted operations on a military base in the summer of 2010. Multiple findings indicate that the cooling tower of building A was the source of this mixed legionellosis outbreak. First, the outbreak featured an epidemic curve similar

to those of previous cooling-tower-related legionellosis outbreaks [2, 30–33] and different from the more indolent patterns of multiple previous potable-water-related LD outbreaks [34–36]. Second, the wide dispersion of cases suggested airborne spread of *Legionella* bacteria. Third, the rates of legionellosis were highest immediately around building A's cooling tower. Fourth, multiple confirmed and probable LD patients denied entering building A. Finally, the clinical *Legionella* isolate matched the environmental isolates from building A's cooling tower. As in multiple past outbreaks [30, 31, 37, 38], the activation of the cooling tower on 19 June was probably key in triggering the outbreak which followed a few weeks later. The large rainstorm that occurred 2 days before the first LD case and the high temperatures and relative humidity present throughout the outbreak may also have contributed since several other legionellosis outbreaks linked to cooling towers have been preceded by similar conditions [31, 32].

The large numbers of both LD and PF cases in this outbreak were unusual. Several environmental factors were present to promote the outbreak. First was the ability of building A's cooling tower to amplify large amounts of *Legionella*. Second, weather conditions promoted the aerosolization of *Legionella* and the blowing of that aerosol towards the base. Third, a large number of workers were in close proximity to building A's cooling tower. This combination of factors is similar to those present during three previous outbreaks with large numbers of both LD and PF cases [2, 3, 13, 39]. To our knowledge, all mixed LD and PF outbreaks with identified sources have been directly associated with cooling towers [2, 6, 8, 13, 14, 39]; warm, stagnant pools of cooling tower sump water aerosolized by nearby air-conditioning units [3]; or indoor heated spas and hot tubs [7, 9–12, 15, 16], not with potable water systems. The lack of mixed legionellosis cases involving showers and sinks, in contrast to multiple LD-only outbreaks due to potable water systems [34–36] suggests that it would be very unusual for those systems to generate high enough concentrations of aerosolized PF agent to cause a mixed legionellosis outbreak. If so, the presence of PF cases in a future LD outbreak would suggest that a potable water system was not the outbreak's cause. Future LD outbreak investigations should seek out possible PF cases in the exposed population since such cases could provide valuable clues about the outbreak's source as well as its size and scope.

This sizable mixed outbreak of LD and PF provided an opportunity to evaluate the factors that lead to each form of legionellosis. Similar to at least one earlier mixed outbreak [10], the positive *L. pneumophila* serogroup 1 urine antigen tests of seven of the LD cases and one of the PF cases suggest that this outbreak may have involved a mixture of live and dead *Legionella* capable of causing both diseases [40]. There also seems to have been a substantial dose-response relationship between the amount of material inhaled from the cooling tower and individuals' risk of developing either LD [33] or PF as well as a relatively rapid drop-off in the concentration of the material from the cooling tower as the distance from the tower increased. For example, occupants of building A had significantly higher risks for developing each disease than occupants of building B, who were only slightly farther away from building A's cooling tower. In addition, it seems reasonable that host characteristics played a role in determining which form of legionellosis the patients from buildings A and B developed since all of them were exposed to the same source capable of causing both forms [14]. However, as in an earlier mixed legionellosis outbreak involving dozens of LD and PF cases [13], we did not identify any specific patient risk factors for developing one form of legionellosis rather than another.

Several features of the base's disease surveillance and response efforts may have reduced the harm caused by the outbreak. The base occupational health staff's detection of a cluster of employee illnesses probably brought the outbreak to the attention of base administrators more quickly than would have occurred in the absence of an employee illness monitoring system. In turn, the base leadership's shutting down the buildings most affected by the outbreak on 22 July 2010 may have played a role in ending the outbreak. The periods between the evacuations of buildings A and B and the symptom onset dates of the last LD and PF cases were within previously observed incubation periods for LD [3, 4] and PF [5] and consistent with the proposition that no legionellosis-causing exposures occurred after buildings A and B were shut down. Additional cases might have occurred if the base leadership had been less aggressive in responding to the outbreak. Earlier identification of the outbreak as involving legionellosis would have aided its management, highlighting the importance of clinical testing for LD [1].

Our study has a number of limitations. The case definition of PF was sensitive but not specific, so

some of the illnesses classified as PF may have been due to other aetiologies. In addition, the lack of laboratory confirmation of the probable LD cases leaves open the possibility that some probable LD cases also may have been due to other aetiologies, although the fact that the outbreak did not coincide with the respiratory illness season makes other aetiologies less likely [41]. More LD cases might have had laboratory confirmation if more of the patients with probable LD had undergone urine antigen testing and if a larger proportion of the urine antigen tests had been collected at patients' first legionellosis-related medical visits. The likely initiation of antibiotics soon after those first visits may have reduced the sensitivity of the urine antigen testing performed on samples collected later [42].

The findings from this mixed legionellosis outbreak caused by a cooling tower have a number of implications for the prevention and control of future US legionellosis outbreaks, which are likely to occur in substantial numbers given rising numbers of reported US legionellosis cases [1]. Preventive maintenance for cooling towers and other potential sources of *Legionella*-laden aerosols [37] is essential. For example, treating a shutdown cooling tower's water system with adequate levels of biocide or sodium hypochlorite as part of the process of restarting the cooling tower can reduce the risk of outbreaks [37]. In addition, whenever possible, the risks from cooling towers should be reduced by placing the towers far from fresh-air intakes and downstream from public areas [37]. Public health officials investigating LD outbreaks should search for related PF cases to better define the size, scope, and cause of the outbreak. Clinicians should consider both the diagnosis of LD and PF in an ill patient with probable exposure to *Legionella* in the context of a LD outbreak and should take care to report any identified legionellosis cases to the public health authorities. Legionellosis appears to be a growing problem in the USA, possibly due to an ageing population as well as climatic conditions, particularly increased temperatures, which favour *Legionella* growth. Proper maintenance of water and cooling systems [37], early recognition of outbreak sources, and prompt identification and treatment of cases are all essential to minimize the harm it causes.

ACKNOWLEDGEMENTS

We gratefully acknowledge the staff of the military base for their participation in this investigation. We

also thank the numerous personnel at the U.S. Army, the CDC, the Michigan Department of Community Health, the Michigan Air National Guard, and area hospitals for their contributions to this investigation. The findings and conclusions in this paper are those of the authors and do not necessarily represent the official position of U.S. Army Public Health Command, the CDC, the Michigan Department of Community Health, or the Michigan Air National Guard.

Financial support was received from U.S. Army Public Health Command and the U.S. Centers for Disease Control and Prevention.

DECLARATION OF INTEREST

None.

REFERENCES

1. **Centers for Disease Control and Prevention.** Legionellosis – United States, 2000–2009. *Morbidity and Mortality Weekly Report* 2011; **60**: 1083–1086.
2. **Fraser DW, et al.** Legionnaires' disease: description of an epidemic of pneumonia. *The New England Journal of Medicine* 1977; **297**: 1189–1197.
3. **O'Mahony MC, et al.** The Stafford outbreak of Legionnaires' disease. *Epidemiology and Infection* 1990; **104**: 361–380.
4. **Den Boer JW, et al.** A large outbreak of Legionnaires' disease at a flower show, the Netherlands, 1999. *Emerging Infectious Diseases* 2002; **8**: 37–43.
5. **Jones TF, et al.** Epidemiologic investigation of a restaurant-associated outbreak of Pontiac fever. *Clinical Infectious Diseases* 2003; **37**: 1292–1297.
6. **Girod JC, et al.** Pneumonic and nonpneumonic forms of legionellosis: the result of a common-source exposure to *Legionella pneumophila*. *Archives of Internal Medicine* 1982; **142**: 545–547.
7. **Goldberg DJ, et al.** Lochgoilhead fever: outbreak of non-pneumonic legionellosis due to *Legionella micdadei*. *Lancet* 1989; **333**: 316–318.
8. **Nicolay N, et al.** Investigation of Pontiac-like illness in office workers during an outbreak of Legionnaires' disease, 2008. *Epidemiology and Infection* 2010; **138**: 1667–1673.
9. **Benin AL, et al.** An outbreak of travel-associated Legionnaires' disease and Pontiac fever: the need for enhanced surveillance of travel-associated legionellosis in the United States. *Journal of Infectious Diseases* 2002; **185**: 237–243.
10. **Burnsed LJ, et al.** A large, travel-associated outbreak of legionellosis among hotel guests: utility of the urine antigen assay in confirming Pontiac fever. *Clinical Infectious Diseases* 2007; **44**: 222–228.
11. **Thomas DL, Mundy LM, Tucker PC.** Hot tub legionellosis: Legionnaires' disease and Pontiac fever after a point-source exposure to *Legionella*

- pneumophila*. *Archives of Internal Medicine* 1993; **153**: 2597–2599.
12. **Euser SM, Pelgrim M, Den Boer JW.** Legionnaires' disease and Pontiac fever after using a private outdoor whirlpool spa. *Scandinavian Journal of Infectious Diseases* 2010; **42**: 910–916.
 13. **Mitchell E, et al.** Two outbreaks of Legionnaires' disease in Bolton Health District. *Epidemiology and Infection* 1990; **104**: 159–170.
 14. **Bell JC, et al.** Legionellosis linked with a hotel car park – how many were infected? *Epidemiology and Infection* 1996; **116**: 185–192.
 15. **Okada M, et al.** The largest outbreak of legionellosis associated with spa baths: epidemic curve and environmental investigation. *Kansenshogaku Zasshi: The Journal of the Japanese Association for Infectious Diseases* 2005; **79**: 365–374.
 16. **Foster K, Gorton R, Waller J.** Outbreak of legionellosis associated with a spa pool, United Kingdom. *Euro-surveillance* 2006; **11**(38): pii=3053.
 17. **Centers for Disease Control and Prevention.** Legionella (Legionnaires' disease and Pontiac fever) – outbreaks (<http://www.cdc.gov/legionella/outbreaks.html>). Accessed 27 January 2013.
 18. **Tablan OC, et al.** Guidelines for preventing healthcare-associated pneumonia, 2003: recommendations of CDC and the Healthcare Infection Control Practices Advisory Committee. *Morbidity and Mortality Weekly Report Recommendations and Reports* 2004; **53**: 1–36.
 19. **Michigan Department of Community Health.** Reportable infectious diseases in Michigan, 2005–2009 summary (http://www.michigan.gov/documents/mdch/2009_CDEpiProfile_337815_7.pdf). Accessed 27 September 2013.
 20. **Sanden GN, Cassidy PK, Barbaree JM.** Rapid immunodot technique for identifying *Bordetella pertussis*. *Journal of Clinical Microbiology* 1993; **31**: 170–172.
 21. **Joly JR, et al.** Development of a standardized subgrouping scheme for *Legionella pneumophila* serogroup 1 using monoclonal antibodies. *Journal of Clinical Microbiology* 1986; **23**: 768–771.
 22. **Gaia V, et al.** Consensus sequence-based scheme for epidemiological typing of clinical and environmental isolates of *Legionella pneumophila*. *Journal of Clinical Microbiology* 2005; **43**: 2047–2052.
 23. **Ratzow S, et al.** Addition of neuA, the gene encoding N-acetylneuraminidase, increases the discriminatory ability of the consensus sequence-based scheme for typing *Legionella pneumophila* serogroup 1 strains. *Journal of Clinical Microbiology* 2007; **45**: 1965–1968.
 24. **National Climatic Data Center Global Summary of the Day (GSOD)** (<http://www7.ncdc.noaa.gov/CDO/cdoselect.cmd?datasetabbv=GSOD&countryabbv=&georegionabbv=>). Accessed 27 September 2013.
 25. **Centers for Disease Control and Prevention.** Procedures for the recovery of *Legionella* from the environment. Atlanta, GA, USA: Department of Health and Human Services, 2005, pp. 1–13.
 26. **Thacker WL, Wilkinson HW, Benson RF.** Comparison of slide agglutination test and direct immunofluorescence assay for identification of legionella isolates. *Journal of Clinical Microbiology* 1983; **18**: 1113–1118.
 27. **Fry NK, et al.** A multicenter evaluation of genotypic methods for the epidemiologic typing of *Legionella pneumophila* serogroup 1: results of a pan-European study. *Clinical Microbiology and Infection* 1999; **5**: 462–477.
 28. **Ricketts KD, et al.** Weather patterns and Legionnaires' disease: a meteorological study. *Epidemiology and Infection* 2009; **137**: 1003–1012.
 29. **Ricketts KD, et al.** Weather patterns and Legionnaires' disease: a meteorological study [Corrigendum]. *Epidemiology and Infection* 2011; **139**: 1443.
 30. **Klaucke DN, et al.** Legionnaires' disease: the epidemiology of two outbreaks in Burlington, Vermont, 1980. *American Journal of Epidemiology* 1984; **119**: 382–391.
 31. **Addiss DG, et al.** Community-acquired Legionnaires' disease associated with a cooling tower: evidence for longer-distance transport of *Legionella pneumophila*. *American Journal of Epidemiology* 1989; **130**: 557–568.
 32. **Phares CR, et al.** Legionnaires' disease among residents of a long-term care facility: the sentinel event in a community outbreak. *American Journal of Infection Control* 2007; **35**: 319–323.
 33. **Brown CM, et al.** A community outbreak of Legionnaires' disease linked to hospital cooling towers: an epidemiological method to calculate dose of exposure. *International Journal of Epidemiology* 1999; **28**: 353–359.
 34. **Silk BJ, et al.** Eight years of Legionnaires' disease transmission in travelers to a condominium complex in Las Vegas, Nevada. *Epidemiology and Infection* 2012; **140**: 1993–2002.
 35. **Kool JL, et al.** More than 10 years of unrecognized nosocomial transmission of Legionnaires' disease among transplant patients. *Infection Control and Hospital Epidemiology* 1998; **19**: 898–904.
 36. **Centers for Disease Control and Prevention.** Legionnaires' disease associated with potable water in a hotel – Ocean City, Maryland, October 2003–February 2004. *Morbidity and Mortality Weekly Report* 2005; **54**: 165–168.
 37. **American Society of Heating, Refrigerating, and Air-Conditioning Engineers.** *ASHRAE Guideline 12–2000: Minimizing the risk of legionellosis associated with building water systems*. Atlanta: ASHRAE, 2000, pp. 31–16.
 38. **Fiore AE, et al.** Epidemic Legionnaires' disease two decades later: old sources, new diagnostic methods. *Clinical Infectious Diseases* 1998; **26**: 426–433.
 39. **Pendergrast M.** *Inside the Outbreaks: The Elite Medical Detectives of the Epidemic Intelligence Service*. New York: Houghton Mifflin, 2010, pp. 164–179.
 40. **Edelstein PH.** Urine antigen tests positive for Pontiac fever: implications for diagnosis and pathogenesis. *Clinical Infectious Diseases* 2007; **44**: 229–231.

41. **Marston BJ, et al.** Incidence of community-acquired pneumonia requiring hospitalization—Results of a population-based active surveillance study in Ohio. *Archives of Internal Medicine* 1997; **157**: 1709–1718.
42. **Kohler RB, Winn WC, Wheat LJ.** Onset and duration of urinary antigen excretion in Legionnaires disease. *Journal of Clinical Microbiology* 1984; **20**: 605–607.