

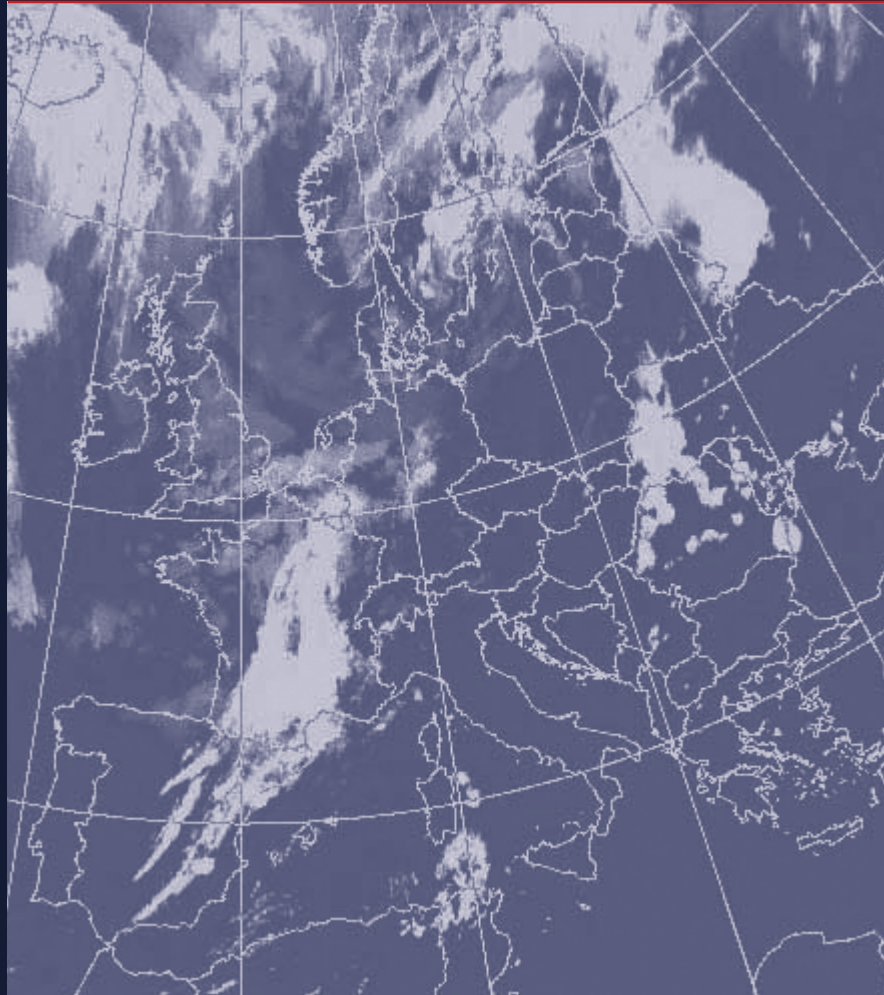
VOL.20 ■ NO. 2 ■ MAY 2012

ISSN 1062-7987

# EUROPEAN REVIEW

KNOWLEDGE  
MANAGEMENT

 **cost**  
EUROPEAN COOPERATION  
IN SCIENCE AND TECHNOLOGY



INTERDISCIPLINARY JOURNAL OF THE HUMANITIES AND SCIENCES  
OF THE ACADEMIA EUROPAEA: THE ACADEMY OF EUROPE

**CAMBRIDGE**  
UNIVERSITY PRESS

<https://doi.org/10.1017/S1062798712000014> Published online by Cambridge University Press

# EUROPEAN REVIEW

Published in Association with the Academia Europaea

## EDITOR-IN-CHIEF

Professor Theo D'haen  
English and Comparative Literature,  
Leuven University, Blijde Inkomststraat 21-3311,  
B-3000 Leuven, BELGIUM  
E-mail: theo.dhaen@arts.kuleuven.be

## EDITORIAL BOARD

Professor Ivan T. Berend  
Center for European and Russian Studies,  
UCLA, 11367 Bunche Hall Box 951446  
CA 90095-1446 Los Angeles, UNITED STATES  
Fax: (1)-310-206-3555 e-mail: iberend@history.ucla.edu

Sir Arnold Burgen  
8a Hills Avenue,  
Cambridge CB1 7XA, UK  
Fax: (44) 1223-740144  
E-mail: asub@cam.ac.uk

Professor Gian Vittorio Caprara  
Dipartimento di Psicologia, Università degli studi di Roma  
Via dei Marsi 78, 00185 Roma, ITALY  
E-mail: gianvittorio.caprara@uniroma1.it

Professor Barbro Johansson  
Wallenberg Neuroscience Center Exp. Brain Research Lab.  
BMC A13, SE-221 84 Lund, SWEDEN  
E-mail: barbro.johansson@neuro.lu.se

Professor Giuseppe Longo  
Department d'Informatique, CNRS-Ecole Normale Supérieure et CREA,  
Ecole Polytechnique LIENS 45, Rue D'Ulm, F-75005 Paris, FRANCE  
E-mail: longo@di.ens.fr

Professor Stephan Leibfried  
Center for Social Policy Research, University of Bremen,  
Parkallee 39, 28209 Bremen, GERMANY  
E-mail: stlf@zes.uni-bremen.de

Professor Ole Petersen  
Cardiff School of Biosciences,  
Cardiff University, Biomedical Sciences Building,  
Museum Avenue, Cardiff CF10 3AX, UK  
E-mail: PetersonOH@cardiff.ac.uk

Professor Juergen Renn  
MPI fuer Wissenschaftsgeschichte Wilhelmstrasse 44,  
Berlin 10117, GERMANY  
E-mail: renn.office@mpiwg-berlin.mpg.de

Professor Piotr Sztompka  
Institute of Sociology, Jagiellonian University,  
Grodzka 52, 31-044 Cracow, POLAND  
Fax: (48)12-222129 e-mail: ussztomp@cyf-kr.edu.pl

Professor Denis Weaire  
School of Physics, Trinity College  
DUBLIN 2, Ireland  
E-mail: DWEAIRE@tcd.ie

Professor Henk Wesseling  
Wijtenbachweg 43, 2341 VX Oegstgeest,  
THE NETHERLANDS  
E-mail: H.L.Wesseling@Tele 2.nl

Professor Björn Wittrock  
Swedish Collegium for Advanced Study,  
Götavägen 4, Se-752 36 Uppsala, SWEDEN  
E-mail: Bjorn.Wittrock@swedishcollegium.se

Professor Barbara Wright  
Department of French,  
Trinity College Arts Building, Dublin 2, IRELAND  
Fax: (353)16717118 e-mail: bwright@tcd.ie

## CONSULTING EDITORS

Professor Werner Arber University of Basel, Switzerland  
Professor Paul Crutzen Max-Planck-Institut für Chemie, Germany

Viscount Etienne Davignon Société Générale de Belgique, Belgium  
Professor Edmond Malinvaud Paris, France  
Professor Hubert Markl University of Constance, Germany  
M Thierry de Montbrial Institut Français des Relations Internationales,  
France  
Professor Quentin Skinner Christ's College, Cambridge, UK

## Subscriptions

European Review (ISSN 1062-7987; electronic 1474-0575) is published quarterly in February, May, July and October. The subscription price of volume 20 (2012) (which includes postage) is £202 net (USA, Canada and Mexico US\$356) for institutions print and electronic, institutions electronic only £179/\$315; £30 net (USA, Canada and Mexico US\$55) for individuals ordering direct from the publisher and certifying that the journal is for their personal use. Single parts cost £52 (USA, Canada and Mexico US\$90) plus postage. Members of the Academia Europaea receive the journal as part of their membership subscription.

Orders, which must be accompanied by payment, may be sent to any bookseller, subscription agent or direct to the publisher: Cambridge University Press, The Edinburgh Building, Shaftesbury Road, Cambridge CB2 8RU; or in the USA, Canada and Mexico: Cambridge University Press, Journals Fulfillment Department, 100 Brook Hill Drive, West Nyack, NY 10994-2133. EU subscribers (outside the UK) who are not registered for VAT should add VAT at their country's rate. VAT registered subscribers should provide their VAT registration number. Japanese prices for institutions are available from Kinokuniya Company Ltd, PO Box 55, Chitose, Tokyo 156, Japan.

Prices include delivery by air. Copies of the journal for subscribers in the USA, Canada and Mexico are sent by air to New York.

Application to mail at Periodicals Postage Rates is pending at New York, NY.

Please enquire about special rates for members of other learned societies, e-mail: journals@cambridge.org

## Copying

This journal is registered with the Copyright Clearance Center, 222 Rosewood Drive, Danvers, MA 01923, USA. Organisations in the USA who are also registered with CCC may therefore copy material (beyond the limits permitted by sections 107 and 108 of U.S. Copyright law) subject to payment to CCC of the per-copy fee of \$12.00. This consent does not extend to multiple copying for promotional or commercial purposes. Code 1062-7987/2012 \$12.00.

ISI Tear Sheet Service, 3501 Market Street, Philadelphia, PA 19104, USA, is authorised to supply single copies of separate articles for private use only.

Organisations authorised by the Copyright Licensing Agency may also copy material subject to the usual conditions.

For all other use, permission should be sought from Cambridge University Press.

For further information on European Review or other Press titles access journals.cambridge.org/erw or cambridge.org/.

This journal issue has been printed on FSC-certified paper and cover board. FSC is an independent, non-governmental, not-for-profit organization established to promote the responsible management of the world's forests. Please see www.fsc.org for information.

Printed in the United Kingdom by the University Press, Cambridge

© Academia Europaea 2012

# European Review

VOLUME 20 NUMBER 2 MAY 2012

## **Focus: Knowledge Management in Contemporary Europe**

Introduction

Leopoldina Fortunati, Svend Erik Larsen and Julia Stamm 149

Time to Rethink the Concepts of Knowledge Dissemination and Transfer in the Educational System? A Systems Theoretical Perspective

Helle Mathiasen 153

Beyond an IT-driven Knowledge Society: Knowledge Management as Intertwined Sociotechnical Circulation

Giuseppina Pellegrino 164

Mobility of Cultures and Knowledge Management in Contemporary Europe

Sakari Taipale 173

Rich Media and Rich Science; Web Squared Cumulativity  
Conceptualization

Oscar Westlund 182

Is There a Future for Higher Education Institutions in the Knowledge Society?

John Brennan 195

Historical Reflections on Islam and the Occident

R.C. Van Caenegem 203

Voting after Watching: The Strategic Role of Election Polls

Sergiu Gherghina and Mihail Chiru 210

Turkish Politics and Policies under the Impact of the 1980's PKK Revolt and the Gulf War of the Early 1990s

Haldun Çancı and Şevket Serkan Şen 222

The Rise and Fall of Enforcement Institutions: An Example of Religion and Secularism

Pavel Ciaian, Ján Pokrivčák and d'Artis Kancs 233

Reform of the EU Cohesion Policy Petr König	252
The Anti-Semitism of History: The Case of the Russian Neo-Pagans Dmitry Shlapentokh	264
The Origin of the Architecture of the Solar System Michael Perryman	276
<b>Book Reviews</b>	
Identity Processes and Dynamics in Multi-Ethnic Europe – Charles Westin, José Bastos, Janine Dahinden and Pedro Góis (eds) Mark Corner	291
European Development Cooperation: In between the Local and the Global – Paul Hoebink (ed.) Mark Corner	293
The Politics of International Migration Management – Martin Geiger and Antoine Pécoud (eds) Pieter Emmer	295
The Making of the Humanities I: Early Modern Europe – Rens Bod, Jaap Maat and Thijs Weststeijn (eds) Nicolette Mout	297

# COST

COST - the acronym for European Cooperation in Science and Technology - is the oldest and widest European intergovernmental network for cooperation in research. Established by the Ministerial Conference in November 1971, COST is presently used by the scientific communities of 35 European countries to cooperate in common research projects supported by national funds.

The funds provided by COST - less than 1% of the total value of the projects - support the COST cooperation networks (COST Actions) through which, with EUR 30 million per year, more than 30 000 European scientists are involved in research having a total value which exceeds EUR 2 billion per year. This is the financial worth of the European added value which COST achieves.

A “bottom up approach” (the initiative of launching a COST Action comes from the European scientists themselves), “à la carte participation” (only countries interested in the Action participate), “equality of access” (participation is open also to the scientific communities of countries not belonging to the European Union) and “flexible structure” (easy implementation and light management of the research initiatives) are the main characteristics of COST. As precursor of advanced multidisciplinary research COST has a very important role for the realisation of the European Research Area (ERA) anticipating and complementing the activities of the Framework Programmes, constituting a “bridge” towards the scientific communities of emerging countries, increasing the mobility of researchers across Europe and fostering the establishment of “Networks of Excellence” in many key scientific domains such as: Biomedicine and Molecular Biosciences; Food and Agriculture; Forests, their Products and Services; Materials, Physical and Nanosciences; Chemistry and Molecular Sciences and Technologies; Earth System Science and Environmental Management; Information and Communication Technologies; Transport and Urban Development; Individuals, Societies, Cultures and Health. It covers basic and more applied research and also addresses issues of pre-normative nature or of societal importance.



[www.cost.eu](http://www.cost.eu)