



Parasite assemblages in volatile host stocks: inter- and intra-cohort variability restrict their value as biological tags for squid stock assessment

Research Article

Cite this article: Gutiérrez MP, Canel D, Braicovich PE, Lanfranchi AL, Irigoitia MM, Ivanovic ML, Prandoni NI, Elena B, Timi JT (2023). Parasite assemblages in volatile host stocks: inter- and intra-cohort variability restrict their value as biological tags for squid stock assessment. *Parasitology* **150**, 1254–1262. <https://doi.org/10.1017/S0031182023001051>

Received: 14 September 2023
Revised: 25 October 2023
Accepted: 1 November 2023
First published online: 6 November 2023

Keywords:

Argentina; biological tags; *Illex argentinus*; parasite assemblages; stocks

Corresponding author:

Paola E. Braicovich;
Email: braicovi@mdp.edu.ar

María Paz Gutiérrez¹ , Delfina Canel¹, Paola E. Braicovich¹ , Ana L. Lanfranchi¹, Manuel M. Irigoitia¹, Marcela L. Ivanovic², Nicolás I. Prandoni², Beatriz Elena² and Juan T. Timi¹

¹Laboratorio de Ictioparasitología, Instituto de Investigaciones Marinas y Costeras (IIMyC), Facultad de Ciencias Exactas y Naturales, Universidad Nacional de Mar del Plata- Consejo Nacional de Investigaciones Científicas y Técnicas (CONICET), Buenos Aires, Argentina and ²Instituto Nacional de Investigación y Desarrollo Pesquero (INIDEP), Buenos Aires, Argentina

Abstract

The Argentine shortfin squid, *Illex argentinus*, inhabits in the southwest Atlantic; it is a semelparous species which grows rapidly along its 1 year lifespan. The identification of its stocks is critical for sustainable fishery exploitation. Parasites have been used as biological indicators in a lower number of studies dealing with squids, therefore a validation of this methodology is necessary. The intra- and inter-cohort variability of parasite assemblages in the summer-spawning stock of *I. argentinus* was analysed to assess their value as indicators of stock structure. Four squid samples from the continental shelf of central Patagonia, corresponding to 3 consecutive cohorts, were examined for metazoan parasites. Results evidenced heterogeneity in terms of parasite assemblage composition and structure, dominated by short-lived gastrointestinal parasites, with a strong influence of host size, but no effect of squid sex. These changes are related to their recent habitats and diets, which change with ontogeny and migrations, clouding any interpretation of patterns when samples spatially or temporally separated are compared. Many squid species share these characteristics; therefore, it is recommended that the use of parasites as biological tags should be restricted to simultaneous sampling, while size or age must be considered for deriving proper conclusions.

Introduction

The Argentine shortfin squid *Illex argentinus* Castellanos, 1960 (Ommastrephidae) is a neritic-oceanic species, widely distributed along the outer shelf and slope of the south-western Atlantic Ocean, between 22°S and 54°S (Brunetti, 1988; Torres Alberto *et al.*, 2020), however, most catches occur in the southern range of the species (35°S to 52°S) (Haimovici and Pérez, 1990; Haimovici *et al.*, 1998, 2014). Two main currents (Malvinas and Brazil currents) dominate the regional oceanography, with their variability and interactions with other masses of water being the main determining factors of the Argentine shortfin squid distribution (Nigmatullin, 1989; Haimovici *et al.*, 1998; Bazzino and Quiñones, 1999). Such temporal variations in environmental conditions are common processes in the region, resulting in changes in the abundance and availability of squid preys, which, in turn, explain the interannual fluctuations usually recorded in squid abundance (Bazzino and Quiñones, 1999). Furthermore, for *I. argentinus*, as for many other squid species, these strong interannual fluctuations in abundance are also a consequence of its semelparous life strategy and its latitudinal and bathymetric migrations, coupled with environmental influences on its recruitment (Dawe and Brodziak, 1998; Pierce *et al.*, 2008; Torres Alberto *et al.*, 2020).

Illex argentinus is a short-lived species, displaying a rapid growth rate and an annual life cycle, resulting in non-overlapping generations. It exhibits opportunistic trophic strategies, displaying a highly dynamic role in the trophic web, which can shift significantly between years and geographical areas due to variations in recruitment and in the abundance of interacting species within the food chain (Dawe and Brodziak, 1998).

This is one of the most important commercial squid species for the Argentine fisheries, with total catches reaching 345 000 tons in 2020 (FAO, 2022). The assessment of their stocks is, therefore, critical for a sustainable fishing exploitation, but also for the maintenance of the ecological integrity of food webs given the relevance of the squids as both predator and prey (Vidal and Haimovici, 1999). The population structure of the southern range of *I. argentinus* is complex, with 4 stocks or subpopulations being differentiated according to the season and reproduction ground (Fig. 1): the spring-spawning stock (SpSS), the bonaerensis-north patagonic stock (BNPS), the summer-spawning stock (SSS) and the south patagonic stock (SPS) (Brunetti, 1988; Ivanovic *et al.*, 2016; Arkhipkin *et al.*, 2023). During the austral summer, from December to February, densest concentrations of *I. argentinus*, composed by juveniles

© The Author(s), 2023. Published by Cambridge University Press. This is an Open Access article, distributed under the terms of the Creative Commons Attribution licence (<http://creativecommons.org/licenses/by/4.0/>), which permits unrestricted re-use, distribution and reproduction, provided the original article is properly cited.

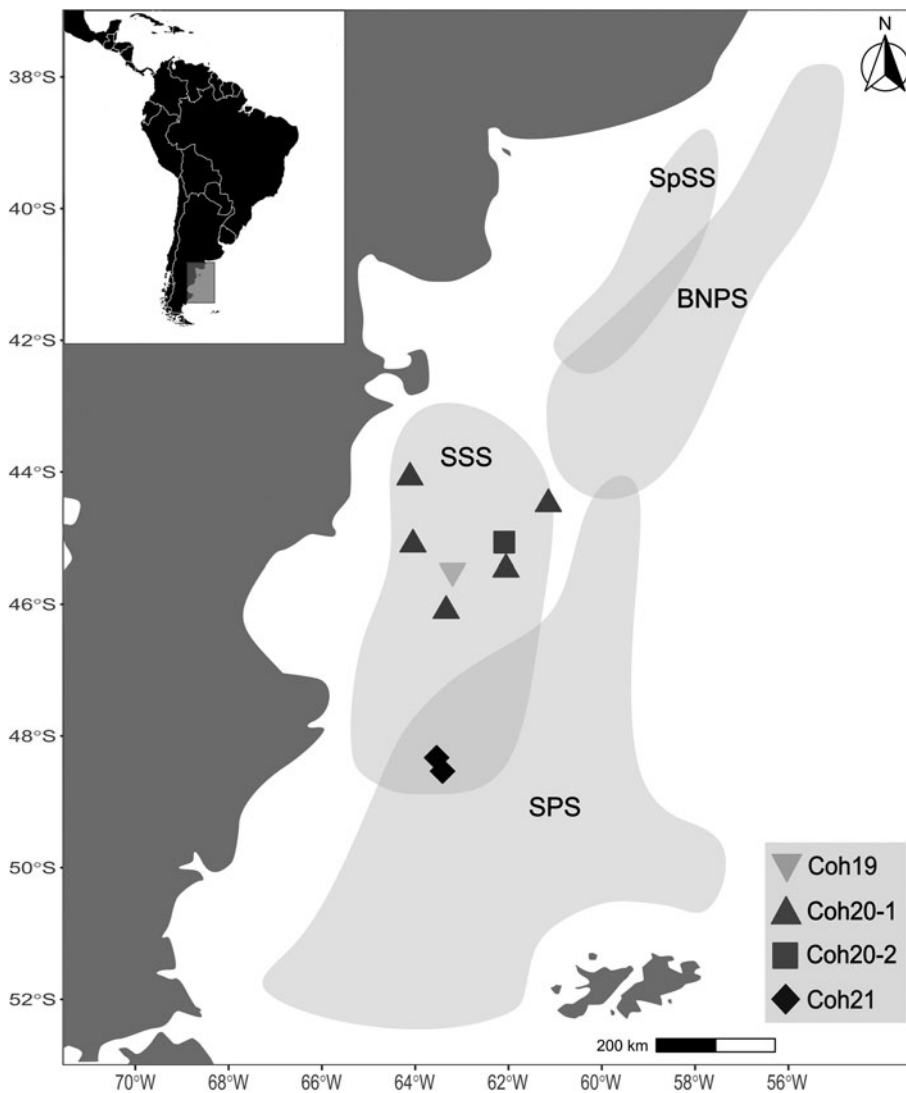


Figure 1. Study area showing the stocks distribution of *Illex argentinus*, spring-spawning stock (SpSS); bonaerensis-north patagonic stock (BNPS); summer-spawning stock (SSS); south patagonic stock (SPS). Coh19: cohort 2019; Coh20-1, Coh20-2: cohort 2020; Coh21: cohort 2021. Inverted triangles and squares represent a single station of Coh19 and Coh20-2 samples, respectively; whereas triangles and rhombuses belong to 5 and 2 stations of Coh20-1 and Coh21, respectively.

and adults of 2 stocks (SPS and SSS, respectively), occur over the Patagonian continental shelf between 43°S and 55°S (Brunetti *et al.*, 1998). The co-occurrence in this zone, at certain times of the year, takes place due to the migratory-reproductive annual cycle of SPS, determining a mixing zone between 47°S and 49°S, approximately (Avigliano *et al.*, 2020). Stocks are distinguishable from each other by their size and their gonadal maturity. Indeed, reproductive squids, corresponding to SSS specimens, are found in the north region (44°–48°S), whereas pre-reproductive concentrations between 49°–52°S are represented by SPS individuals (Ivanovic *et al.*, 2016). Furthermore, a comprehensive stock assessment is necessary because this species is exploited during its ontogenetic migrations, both within exclusive economic zones of different coastal states along South American coasts and in adjacent high seas (Arkhipkin *et al.*, 2023). In the high seas, where squids harvest accounts for around 45% of the total catch, regulation and control of fisheries are non-existent, posing a serious risk of stock depletion becoming the resource highly vulnerable to overfishing during years of poor recruitment and low abundance (Arkhipkin *et al.*, 2023), highlighting the need for their precise identification.

According to Timi and Buchmann (2023), the vast majority of studies on parasites as biological indicators to discriminate stocks deal with teleost fish as host, with a comparatively lower number of studies considering elasmobranchs and invertebrates. Despite the economic relevance of *I. argentinus* for regional fisheries and the knowledge about their parasites (Threlfall, 1970; Nigmatullin,

1989; Hochberg, 1990; Nigmatullin and Shukhgálter, 1990; Sardella *et al.*, 1990; Vidal and Haimovici, 1999; González and Kroeck, 2000; Cipriani *et al.*, 2019), a single study has used parasites as indicators for their stock assessment in San Matías Gulf, Argentina (González and Kroeck, 2000). However, results on parasite tags should be taken cautiously, and must consider the lifespan of squid parasites and its interaction with host characteristics, especially when infestations depend on host size or age (Lester and MacKenzie, 2009; Timi and Poulin, 2020). Indeed, the ecology and behaviour of cephalopods, together with life cycle, mantle size, deep range and vagility are important drivers of parasite diversity (González *et al.*, 2003). Additionally, migratory species such as squids, which alternate between feeding and spawning habitats, can evidence ontogenetic changes in the structure of transient parasite assemblages, leading to misinterpretation of their stock structure.

In this paper, the variability of parasite loads due to hosts and environment is analysed for squids of the SSS stock because it is known that they perform only small-scale spatial migrations, restricted to the outer shelf at depths ranging between 50 and 200 m, not using high sea areas every year (Arkhipkin *et al.*, 2023). This characteristic makes the SSS easier to analyse than the SPS stock, which undergoes extensive migrations and, as a result, introduces potential variability to parasite loads when moving through oceanographically distinct areas. The aim of this study is, therefore, to analyse the inter- and intra-cohort variability in the structure of parasite assemblages in the SSS of

I. argentinus to assess their value as indicators of stock structure in further studies at broader scales.

Materials and methods

Squid and parasites sampling

A total of 318 specimens of *I. argentinus*, distributed in 4 samples, corresponding to 3 consecutive cohorts (Coh19, Coh20-1, Coh20-2, Coh21) of the SSS caught between 2020 and 2022, were examined for metazoan parasites (Table 1). Two of them, Coh20-1 and Coh21, were obtained from research cruises of the Instituto Nacional de Investigación y Desarrollo Pesquero (INIDEP), and those corresponding to Coh19 and Coh20-2 were obtained from commercial catches during summer, at intermediate waters of central Patagonia. Squids belonging to Coh20-1 and Coh21 included 5 and 2 stations, respectively, whereas Coh19 and Coh20-2 both included a single station (Fig. 1).

Squids were deep frozen in plastic bags at -18°C until the examination. After thawing, each squid was measured (dorsal mantle length [ML], cm) and cut along the ventral midline of the mantle. Furthermore, sex and gonadal maturity index according to an established scale of maturity (Brunetti *et al.*, 1999) were determined.

The mantle, funnel, buccal cavity and viscera (oesophagus, stomach, digestive caecum, intestine, digestive gland, gills, heart, kidney and gonads) were examined and parasites were recovered and examined under a stereoscopic microscope. Some specimens were fixed on formalin 4% and ethanol 96% for morphological and molecular identification, respectively.

Genetic identification of cestode larvae

Given the wide range of sizes and shapes of larval cestodes (plerocercoids) parasitizing *I. argentinus* (see Threlfall, 1970; Nigmatullin and Shukhgáler, 1990), and the presence of intermediate forms and sizes, it was necessary to assess how many taxa they represent. Therefore, a subsample of 8 plerocercoids from digestive tracts and 1 undeveloped larva found encysted in the stomach wall were collected for genetic analysis. DNA extraction was carried out using whole specimens with the DNeasy Blood and Tissue[®] Kit (Qiagen, Hilden, Germany) according to the manufacturer's instructions. A fragment (~1400 bp) of the *lsrDNA* gene (28S rDNA) spanning domains D1–D3 was amplified using the primer combinations ZX-1 (Waeschenbach *et al.*, 2007)/1500R (Tkach *et al.*, 2003) or LSU5 (Littlewood *et al.*, 2000)/1200R (Lockyer *et al.*, 2003). The polymerase chain reaction (PCR) reactions were carried out in a 25 μL volume containing 0.5 μL of each primer (10 mM), 3 μL of MgCl₂ 25 mM (Promega, Wisconsin, USA), 5 μL of 5 \times buffer (Promega), 2 μL of dNTPs 10 mM, 0.25 μL of Go-Taq Polymerase (5 U μL^{-1}) (Promega), 5 μL of total DNA (~30 ng μL^{-1}) and sterilized distilled water up to 25 μL . PCR temperature conditions were the following: 94 $^{\circ}\text{C}$ for 2 min (initial denaturation), followed by 40 cycles at 94 $^{\circ}\text{C}$ for 30 s (denaturation), 56 $^{\circ}\text{C}$ for 45 s (annealing), 72 $^{\circ}\text{C}$ for 2 min (extension) and followed by post-amplification at 72 $^{\circ}\text{C}$ for 7 min.

All amplified PCR products were verified in a 1.2% agarose gel. The successful PCR products were purified using QIAquick Gel Extraction Kit or QIAquick PCR purification Kit (Qiagen). Sequencing of both strands was carried out using ABI 3730XLs automated sequencer (Applied Biosystems, Macrogen, South Korea).

Sequences were edited and assembled in Proseq v.3.5 (Filatov, 2002) and deposited in the GenBank database. For identification, generated sequences were compared against the NCBI database using the BLAST algorithm (Sayers *et al.*, 2022). Sequences are available from GenBank under accession numbers OR725126 to OR725133.

Quantitative and similarity analysis of parasites

Each parasite was identified and counted and the prevalence and mean abundance for each species in each sample were calculated following Bush *et al.* (1997). The ML was compared across samples by a 1-way permutational multivariate analysis of the variance (PERMANOVA, Anderson *et al.*, 2008) on Euclidean distances (1 \times 4 factorial design, 'sample' as fixed factor), testing for main effects after 9999 permutations and subsequent *post-hoc* pairwise comparisons. Following Anderson *et al.* (2008), an unrestricted permutation of raw data was used as the method of permutation. Species richness (*S*) was calculated for each individual squid, and the mean values were compared across samples by a PERMANOVA analysis as in the case of ML, but applying a sequential sum of squares (type I SS) because samples were unbalanced (different numbers of squids examined by sample) and host size was included as a covariate (analysis of covariance [ANCOVA] model).

Multivariate analyses between samples were conducted using both Bray–Curtis index (based on abundances) and Jaccard index (based on presence/absence) for all possible pairs of hosts (infracommunities *sensu* Bush *et al.*, 1997) from different samples. Due to the large differences in parasite loads across parasite species, data were square root-transformed prior to all analyses in order to downweigh the importance of most prevalent/abundant species, so that the less dominant species contribute in determining similarity among samples (Clarke and Gorley, 2015).

To evaluate if samples can be differentiated based on the abundance and composition of their parasite assemblages, non-metric multidimensional scaling (nMDS) of the both similarity matrices was performed between all infracommunities, and their centroid differences were visualized by means of bootstrap averaging based on repeated resampling (with replacement, 75 iterations) from the original dataset (Clarke and Gorley, 2015). Differences between infracommunities among samples were further examined using canonical analysis of principal coordinates (CAP) (Anderson and Willis, 2003; Anderson *et al.*, 2008).

The structures of parasite infracommunities were compared between samples considering possible gender difference, introducing host ML as a covariable (ANCOVA model, 2 \times 4 factorial design, samples and sex as fixed factors) and testing for main effects after 9999 permutations, using Bray–Curtis and Jaccard

Table 1. Composition of 4 samples of *Illex argentinus* belonging to 3 consecutive cohorts of summer-spawning stock

Sample code	Cohort	Date of capture	Latitude/longitude	<i>n</i>	Mantle length \pm s.o.
Coh19	2019	02/2020	45 $^{\circ}$ 30'S, 62 $^{\circ}$ 12'W	94	23.91 \pm 2.90
Coh20-1	2020	12/2020	46 $^{\circ}$ 5'–44 $^{\circ}$ 4'S, 64 $^{\circ}$ 6'–62 $^{\circ}$ 3'W	160	20.39 \pm 2.38
Coh20-2	2020	02/2021	45 $^{\circ}$ S, 62 $^{\circ}$ W	43	27.28 \pm 1.86
Coh21	2021	02/2022	48 $^{\circ}$ 32'–48 $^{\circ}$ 19'S, 63 $^{\circ}$ 32'–63 $^{\circ}$ 25'W	21	24.14 \pm 2.28

indices. Following Anderson *et al.* (2008), a permutation of residuals under a reduced model was used as the method of permutation. A sequential sum of squares (type I SS) was applied because the use of a covariate due to samples was unbalanced (different numbers of squids examined by sample). Where differences were detected by PERMANOVA, pairwise comparisons were used to determine which samples differed. All similarity and distance measures, as well as multivariate analyses were implemented in PRIMER V7 and PERMANOVA+ for PRIMER package (Anderson *et al.*, 2008).

Results

Squid ML was significantly different among samples ($F_{7,246}$: 97.956; $P_{\text{perm}} < 0.01$) (Table 2, Fig. 2A), with pairwise comparisons showing significant differences ($P_{\text{perm}} < 0.01$) for most pairs of samples, except between Coh19 and Coh21 ($P_{\text{perm}} > 0.05$).

The molecular characterization allowed to identify 7 of the phyllobothriid plerocercoid sequences (1201 bp) as belonging to *Clistobothrium* n. sp. 1 (MT732134) and *Clistobothrium* sp.

(KM272992 and MT732134) deposited in GenBank, with a percentage of identity of 99.67 (1 isolate) to 100% (6 isolates). Therefore, all morphological types of phyllobothriid plerocercoids were pooled for further analyses. The sequence of the undeveloped larval cestode (1430 bp) retrieved a percentage of identity of 96.65–96.79% with sequences of 3 unidentified species of *Grillotia* (Lacistorhynchidae) (MH688700, MH688704 and MH688707).

The whole sample of *I. argentinus* harboured 12 parasite taxa (Table 3). At infracommunity level, no differences in species richness were observed across samples (Table 2, Fig. 2B). A total of 85.22% squids were parasitized by at least 1 species, and 2187 individual parasites were recorded in the whole sample (Table 3). Only 8 of those taxa showed a prevalence >10% in at least 1 of the samples. Most parasites were larval forms, with the exception of the digeneans *Derogenes varicus* and *Elytrophalloides oatesi*, and the nematode *Hysterothylacium aduncum*, all found in the digestive tract. Larval cestodes dominated numerically the assemblages, representing 64.84% of individual parasites, being mainly represented by phyllobothriidians and

Table 2. PERMANOVA results of comparisons of mantle length, species richness, composition and structure of parasite communities of *Illex argentinus* across 4 samples corresponding to 3 cohorts of the summer-spawning stock

Response variability	Source	D.F.	SS	MS	Pseudo F	P (perm)
Univariate						
Mantle length	Cohort	3	1775.5	591.82	97.956	0.0001
(Euclidean distance)	Residual	267	1613.1	6.042		
	Total	270	3388.6			
Species richness	Mantle length	1	44.456	44.456	39.369	0.0001
(Euclidean distance)	Cohort	3	9.1348	3.0449	2.6965	0.0471
	Sex	1	1.0963	1.0963	0.97084	0.3312
	Mantle length × cohort	3	4.692	1.564	1.385	0.2476
	Mantle length × sex	1	6.0109e ⁻³	6.0109e ⁻³	5.3284e ⁻³	0.9403
	Cohort × sex	3	7.1183	2.3728	2.1013	0.0916
	Residual	303	342.15	1.1292		
	Total	317	411.8			
Multivariate						
Infracommunity structure	Mantle length	1	70 597	70 597	25.774	0.0001
(Bray–Curtis similarity)	Cohort	3	39 459	13 153	4.8019	0.0001
	Sex	1	3952.8	3952.8	1.4431	0.2201
	Mantle length × cohort	3	11 802	3934.1	1.4363	0.137
	Mantle length × sex	1	5072.1	5072.1	1.8518	0.1094
	Cohort × sex	2	7619.7	3809.9	1.3909	0.1914
	Residual	259	7.09e ⁵	2739.1		
	Total	270	8.48e ⁵			
Infracommunity composition	Mantle length	1	65 643	65 643	22.773	0.0001
(Jaccard similarity)	Cohort	3	37 008	12 336	4.2797	0.0001
	Sex	1	2880.9	2880.9	0.99945	0.4104
	Mantle length × cohort	3	12 986	4328.5	1.5017	0.0987
	Mantle length × sex	1	4451.4	4451.4	1.5443	0.173
	Cohort × sex	2	6828.2	3414.1	1.1844	0.2963
	Residual	259	7.47e ⁵	2882.5		
	Total	270	8.76e ⁵			

P values obtained after 9999 permutations.

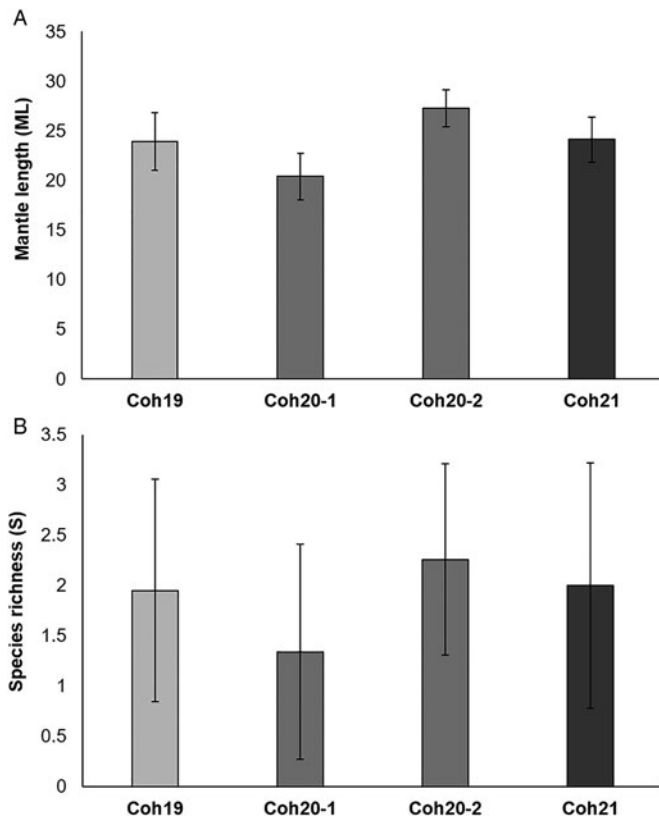


Figure 2. Averaged dorsal mantle length (A) and infracommunity species richness (B) of *Illex argentinus* in 4 samples of the summer-spawning stock. Cohorts are represented by a grey scale. Vertical bars representing standard deviations (as shown in Table 2). Coh19: cohort 2019; Coh20-1, Coh20-2: cohort 2020; Coh21: cohort 2021.

tetraphyllidians found in the digestive caecum, and less commonly in gills, stomach, intestine, funnel, buccal cavity and oesophagus.

The bootstrap-average-based nMDS ordination of both Bray-Curtis (Fig. 3A) and Jaccard (Fig. 3B) was similar to each other, and showed an apparent pattern of separation between samples, with a low level of stress (0.04 and 0.05, respectively). Squids from Coh21 were clearly separated from the rest, especially along the first axis; parasite assemblages of Coh19 occupied an intermediate position between the 2 samples of Coh20, these 3 groups being mainly separated along the second axis.

The CAP analysis showed significant differences among samples ($tr = 0.4725$ and $tr = 0.558$ for Bray-Curtis and Jaccard, respectively; both $P < 0.001$). The selected orthonormal PCO axes ($m = 5$ and $m = 6$, respectively) described 92.5 and 99.15%, respectively, of the variation in the data 'cloud', although the percentage of correct allocations was relatively low (50.9 and 52.8%, respectively). Cross-validation results based on Bray-Curtis similarity (Table 4) showed that Coh21 had the highest percentage of correctly allocated squids, whereas most hosts from both samples of Coh20 were mostly allocated to their respective sample. Finally, Coh19 showed a very low proportion of correctly allocated squids, most of which were misclassified among Coh20-1 and Coh-20-2. When Jaccard index was considered (Table 4), a similar picture was observed, although several squids of Coh21 were misclassified in Coh19.

The structure and composition of parasite infracommunities varied across samples and with ML but not with host sex, nevertheless no interaction between ML and samples was observed (Table 2). Pairwise comparisons after 'correcting' for the effect of squid length evidenced significant differences for both Bray-Curtis and Jaccard indices among most pairs of samples

Table 3. Prevalence (P), mean abundance (MA) with standard deviation (s.d.), site of infection and stage of development of parasites of *Illex argentinus* in 4 samples corresponding to 3 consecutive cohorts of the summer-spawning stock

Parasite	Site	Stage	Coh19		Coh20-1		Coh20-2		Coh21	
			P	MA \pm s.d.	P	MA \pm s.d.	P	MA \pm s.d.	P	MA \pm s.d.
Nematoda										
<i>Anisakis</i> sp.	Co	L3	46.81	1.05 \pm 1.76	10.63	0.29 \pm 1.79	81.40	2.23 \pm 2.57	23.81	0.29 \pm 0.56
<i>Hysterothylacium aduncum</i>	Di	L4/adult	19.15	0.27 \pm 0.64	20.00	0.25 \pm 0.55	16.30	0.16 \pm 0.37	14.29	0.24 \pm 0.62
<i>Hysterothylacium aduncum</i>	Co	L3	2.13	0.05 \pm 0.37	3.75	0.04 \pm 0.19	2.33	0.02 \pm 0.15	–	–
Rhabditida fam. gen. sp. 1	Co	Larvae	41.49	0.86 \pm 1.59	38.75	0.98 \pm 1.70	39.53	0.67 \pm 1.04	9.52	0.10 \pm 0.30
Rhabditida fam. gen. sp. 2	Co	Larvae	10.64	0.11 \pm 0.31	–	–	–	–	–	–
Cestoda										
<i>Clistobothrium</i> sp. 1 ^a	Di	Plerocercoid	48.94	4.26 \pm 17.72	30.00	1.48 \pm 8.34	62.79	3.72 \pm 14.07	80.95	7.24 \pm 11.52
<i>Dinobothrium</i> sp. 1	Di	Plerocercoid	11.70	0.52 \pm 2.35	2.50	1.21 \pm 14.39	11.63	0.74 \pm 2.73	57.14	9.19 \pm 18.24
<i>Dinobothrium</i> sp. 2	Di	Plerocercoid	–	–	–	–	2.33	0.02 \pm 0.15	–	–
Lacistorhynchidae gen. sp. ^a	St	Larvae	2.13	0.28 \pm 1.94	10.63	0.43 \pm 1.85	–	–	–	–
Digenea										
<i>Derogenes varicus</i>	Di	Adult	17.02	0.18 \pm 0.41	17.50	0.21 \pm 0.51	9.30	0.09 \pm 0.29	14.29	0.24 \pm 0.62
<i>Elytrophalloides oatesi</i>	Di	Adult	1.06	0.01 \pm 0.10	–	–	–	–	–	–
Isopoda										
Gnathiidae gen. sp.	Ma	Praniza	–	–	0.63	0.01 \pm 0.08	–	–	–	–

Di, digestive tract; Ma, mantle cavity; Co, coelomic membrane; St, stomach wall.

^aGenetic identification.

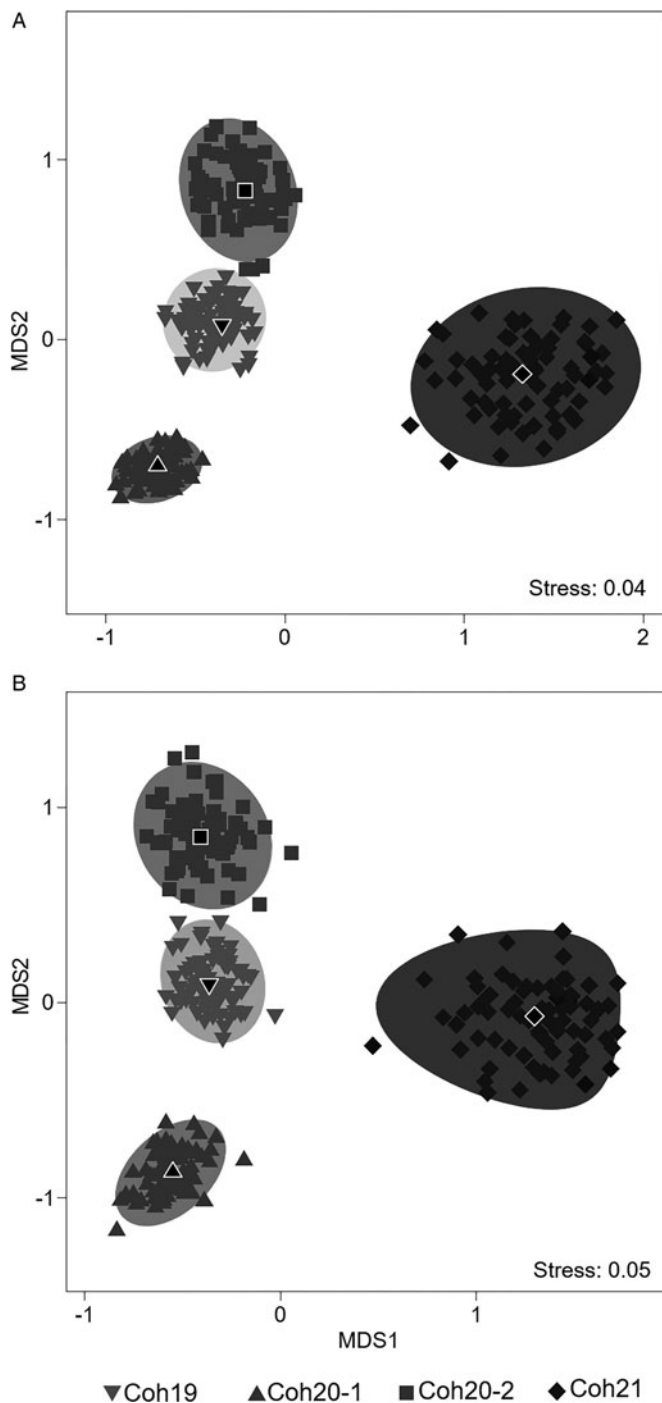


Figure 3. Non-metric multi-dimensional scaling plot (nMDS) of bootstrap averages (75 repetitions) of parasite infracommunities of *Illex argentinus* distributed within 4 samples at intermediate waters of central Patagonia based on Bray–Curtis and Jaccard similarity of square root-transformed data. Individual repetitions are based on random draw and replacement of samples from the original dataset. Black symbols represent the overall centroids across all repetitions. Grey areas represent 95% confidence regions. Coh19: cohort 2019; Coh20-1, Coh20-2: cohort 2020; Coh21: cohort 2021.

($P_{\text{perm}} < 0.01$), whereas squids from Coh19 were similar to those of both Coh20-1 and Coh20-2 ($P_{\text{perm}} > 0.05$).

Discussion

Previous records of parasites in *I. argentinus* from the southwestern Atlantic Ocean are mostly descriptive, and include several species of cestodes, digeneans, nematodes, 1 copepod and 1 coccidia (Threlfall, 1970; Nigmatullin, 1989; Hochberg, 1990;

Nigmatullin and Shukhgälter, 1990; Sardella *et al.*, 1990; Vidal and Haimovici, 1999; González and Kroeck, 2000; Cipriani *et al.*, 2019). To our knowledge, the present findings represent new host records for the digenean *E. oatesi*, the cestode Lacistorhynchidae gen. sp., larval nematodes of the Order Rhabditida and the gnathiid isopod.

In agreement with previous studies on parasite fauna of other cephalopod species (Pascual *et al.*, 1995; Brickle *et al.*, 2001; Tedesco *et al.*, 2020), cestode plerocercoids were the most abundant group found in *I. argentinus*, which also showed a substantial morphological variability (see Threlfall, 1970; Nigmatullin and Shukhgälter, 1990; Sardella *et al.*, 1990). Characterization of species *via* molecular analysis allowed to confirm that the larvae of *Phyllobothrium* sp., previously reported in *I. argentinus*, correspond to the phyllobothriidean genus *Clitobothrium*, as was shown by Brickle *et al.* (2001) for cestodes from *Doryteuthis gahi* caught in southern areas. Similarly, the larval morphotype previously identified as *Pelichnibothrium speciosum* (Threlfall, 1970; Nigmatullin and Shukhgälter, 1990; Sardella *et al.*, 1990) was genetically identified as *Clitobothrium*. The incipient development of the larvae that was found to be encysted did not allow their identification as a trypanorhynch cestode due to the lack of structures such as tentacles or bothridia. The absence of these structures has been observed in early stages of the larval development in some trypanorhynchs, such as those of the genus *Grillotia* (Schramm, 1991). Indeed, the highest percentages of identity were concordant with sequences of 3 unidentified species of *Grillotia* found in *Amblyraja radiata*, *Bathyraja magellanica* and *B. brachyrops*, respectively, the last 2 from South Atlantic Ocean (Beer *et al.*, 2019).

Many studies on parasites of cephalopods are aged and reliant upon morphological features. Only recently, the implementation of molecular techniques began to more accurately elucidate the taxonomic status of cestode species parasitizing squids (Brickle *et al.*, 2001; Caira *et al.*, 2020; Guardone *et al.*, 2020), providing evidence of a potential overestimation of cestode species in *I. argentinus* and allowing proper comparisons for squid stock assessment.

Host size is an important feature that affects parasite diversity by influencing the rates of colonization by new parasites (Luque and Poulin, 2004). Furthermore, host size is a useful surrogate of trophic level, determining patterns of predation and vulnerability to mortality (Jennings *et al.*, 2001). Consequently, the characterization of the relationship between fish size and diet and trophic level is essential for assessing how much these interactions affect the structure of parasite assemblages (Timi *et al.*, 2010, 2011). In the present study, whereas the increase of ML in Coh20-2 regarding Coh20-1 is an expected result, since the 2 months separating samples represent a considerable proportion of the annual squid lifespan, the observed variability in ML across years, even when squids were caught in the same month, can be attributed to the fact that growth and recruitment of cephalopods are highly influenced by environmental conditions. This results in wide inter-annual fluctuations of these processes, and even a sub-structure of microcohorts (intra-annual) is frequently present (Boyle and Rodhouse, 2005). Regarding parasites, the mean infracommunity species richness was uniform across samples. Such homogeneity responds to the small number of species found in the whole sample and the recurrence in the dominance by the same group of species, independently of their variability in abundance across samples. In the region, the diet of squids has evidenced a very low diversity and the dominance of a single type of prey in the majority of stomachs so far examined (Ivanovic and Brunetti, 1994; Ivanovic, 2010; Prandoni, 2022). Considering that most parasites of *I. argentinus* are acquired through the consumption of parasitized preys, the low diversity

Table 4. Results of the cross-validation of principal co-ordinates analysis (CAP) based on Bray–Curtis and Jaccard similarity (leave-one-out allocation of individual squid to 1 of 4 samples)

Original sample	Coh19	Coh20-1	Coh20-2	Coh21	Total	% (group)
Bray–Curtis						
Coh19	9	30	36	11	86	10.47
Coh20-1	13	80	12	18	123	65.04
Coh20-2	2	5	31	4	42	73.81
Coh21	0	1	1	18	20	90
Jaccard						
Coh19	10	30	35	11	86	11.63
Coh20-1	17	91	11	4	123	73.98
Coh20-2	0	6	31	5	42	73.81
Coh21	6	1	2	11	20	55

Rows correspond to group memberships, including the percentage of correctly classified squid to their individual sample. Numbers in italics indicate number of squids in 4 samples of spawning-summer stock correctly allocated to their own locality.

in its food items explain the rather homogeneous species richness recorded.

Beyond the similar values of species richness, all multivariate analyses evidenced a high level of structural and compositional heterogeneity across samples, largely driven by differences in squid size, but not by sex. Given that most parasites are transmitted trophically to squids, changes in parasitism are surely determined by host diet and its ontogenetic and seasonal changes. Transient parasites, namely those living in the gut lumen of hosts, such as most helminths found in *I. argentinus*, can persist in the host for a few weeks (Lester *et al.*, 1985; Lester, 1990) representing mostly the food items consumed in recent times, whereas long-lived parasites, such as larvae of *Anisakis*, tend to accumulate as the host ages (Braicovich *et al.*, 2016). This cumulative pattern is readily evident when comparing the increase of prevalence in squids from the same cohort, caught 2 months later.

The dominance of short-lived helminths makes the parasite assemblages of the Argentine shortfin squid highly susceptible to short-term environmental fluctuations, either directly or indirectly through their effect on zooplankton and other intermediate hosts. Consequently, depending on recent diets, their composition and structure can vary accordingly, driving unpredictable temporal patterns. Indeed, the observed interannual changes were not uniform, with parasite communities of Coh19 and Coh20 being more similar to each other than to Coh21. Similar heterogeneities were observed even for members of the same cohort. Of course, these differences are influenced by the differences in squid size and the locality of capture, but even after correcting for host size, most differences remained. On the other hand, squid sex had no effect on parasite loads. This is a consequence of the numerical preponderance of trophically transmitted parasites in a host that does not exhibit gender differences in diet composition or relative abundance (Prandoni, 2022), nor in somatic growth rates prior to sexual maturity (Lin *et al.*, 2015). Likewise, no differences between sexes were observed for the parasites of *Illex coindetii* in Galician waters, Spain (Pascual *et al.*, 1995).

In addition to the features of the parasite taxa, as well as of the host diet and its variations, other host and environmental characteristics play crucial roles in determining the observed patterns of parasite variability. Indeed, *I. argentinus*, like many other cephalopods, exhibits high metabolic rates and rapid growth, whose high variability is environmentally driven, resulting in interannual variations in stock abundance and distribution (Arkhipkin *et al.*, 2021). Furthermore, its life cycle is highly variable both spatially and temporally due to their latitudinal migrations and

bathymetric distribution, the latter also changing throughout its ontogeny (Ivanovic *et al.*, 2016), all features that make their trophic interaction quite dynamic and scale-dependent.

In relation to the environment, spawning of *I. argentinus* is associated with marine fronts, whose characteristics change seasonally and their geographical locations vary according to the dynamics of marine currents in semi-annual, annual and biannual cyclic periods (Acha *et al.*, 2004; Sacau *et al.*, 2005). Indeed, studies modelling squid abundance in this ecosystem have retained sea surface temperature, latitude, longitude, month, average fishing depth and year as main predictors (Sacau *et al.*, 2005), evidencing the complexity of the system and justifying its variability. Disparate environmental conditions, when experienced by early stages of *I. argentinus*, can also affect the success of recruitment (Torres Alberto *et al.*, 2020) and growth rates (Arkhipkin, 1990; Haimovici *et al.*, 1998), leading to interannual differences in growth either intracohort and between winter stocks (Arkhipkin and Scherbich, 1991; Haimovici *et al.*, 1998).

All these sources of variability related to parasites, hosts and environment are expected to be reflected on parasite assemblages of *I. argentinus*, requiring consequently a careful selection of those parasite tags to be used or, at least, to make cautious interpretations of the observed patterns. In view of this generalized variability, stock differences can be overestimated, undermining its value as management tools for sustainability of the resource. For such purposes, and to promote a rational exploitation of squids, differences between stocks of *I. argentinus* using parasite tags should be based on specimens of equivalent size or age, and caught simultaneously at the putative stock units under study. Any departure of these conditions poses a serious risk of misinterpreting natural variability due to the stock of origin. This seems to be the case of the previous study on parasite tags for *I. argentinus* (González and Kroeck, 2000), where differences in parasite fauna were attributed to variations between stocks arriving with months of differences to a north patagonian gulf and showing notable differences in ML. Even when the stock identification based on squid size and maturity could be correct, the variability in parasite loads may respond to different causes, such as to squid size and not to the stock of origin. Indeed, higher species richness and abundances were observed in a sample composed by squids ranging between 23 and 38 cm ML, in relation to the second sample whose members measured between 14 and 22 cm ML. Although a gradual increase of parasitism is acknowledged (González and Kroeck, 2000), host size seems to be overlooked as a relevant determinant of these changes. Furthermore, the authors argue that these stocks

are biotopically isolated from those inhabiting neighbouring areas when compared with previous studies carried out a decade earlier.

The biological and ecological host features regulating the prevalence and abundance in parasite assemblages, mostly composed of transient parasites, are shared by many squid species. Research on parasites as tags has been misleading as an *ad hoc* tool in elucidating the discreteness of unit stocks (Pascual and Hochberg, 1996). Few previous works using parasites as indicators of stock structure for squids have been carried out worldwide, being not free of these flaws, or having concluded that parasites are of little value as biological tags. For example, Dawe *et al.* (1982) analysed the parasites of the short-finned squid *Illex illecebrosus* of several sizes caught at several localities, seasons and years in the northwest Atlantic. The authors concluded that, because of the broad geographic distribution of parasites, their condition of generalists and the lack of taxonomic resolution, parasites were useless as indicators. On the other hand, Bower and Margolis (1991) proposed parasites of the flying squid, *Ommastrephes bartrami*, as potential tags for discriminating stocks between north-western and north-eastern Pacific waters based on differences, after comparing their results with previous studies carried out years earlier and not considering squid size or age as relevant variables. Pascual *et al.* (1995) conducted a survey of parasites of short-finned squid *I. coindetii* taken from 2 locations off the north-western Iberian Peninsula. Despite finding geographic differences, parasite infections showed close correlations with host life-cycle, with parasite loads increasing often with host size and maturity, which were considered for interpreting the observed patterns. In a multidisciplinary study of *Nototodarus sloani* from New Zealand waters, carried out by Smith *et al.* (1981), parasitological evidence, after taking account of host age (or length) and month of capture, supported the results of genetic and morphological study resulted in the identification of 2 congeneric host species.

Owing to the short life-cycles and variable growth rates of most cephalopods, their stocks may be highly volatile, due to their susceptibility to recruitment and overfishing (Pierce and Guerra, 1994). Therefore, if parasites are selected as indicators for stock assessment, it is crucial to carefully consider all the previously discussed sources of variability in order to obtain reliable results. Otherwise, differences between host populational units could be overestimated or, at least, derived from parasite tags varying for reasons other than those driving to actual dissimilarities between host stocks.

Data availability statement. Datasets are available from the corresponding author upon reasonable request. Nucleotide sequences of the 28S rDNA of *Clistobothrium* sp. (OR725126 to OR725132) and *Lacistorhynchidae* gen. sp. (OR725133) were deposited in GenBank database (<http://www.ncbi.nlm.nih.gov>).

Acknowledgements. The authors thank María Isabel Lohfeldt for providing the samples from the commercial catches.

Author contributions. M. P. G.: conceptualization, sampling, statistical analysis, writing original draft, writing review and editing. D. C.: sampling, writing original draft and writing review. P. E. B.: sampling, statistical and molecular analyses, writing original draft and writing review. A. L. L.: sampling. M. M. I.: sampling and molecular analysis. M. L. L.: provision of squid samples and results analyses. N. I. P.: provision of squid samples and results analyses. B. E.: provision of squid samples and results analyses. J. T. T.: conceptualization, statistical analysis, supervision and funding acquisition.

Financial support. Financial support was provided by grants from Fondo para la Investigación Científica y Tecnológica (PICT no. 2019-03376) and Universidad Nacional de Mar del Plata (EXA 1104/22).

Competing interests. None.

Ethical standards. Not applicable.

References

- Acha EM, Mianzan HW, Guerrero RA, Favero M and Bava J (2004) Marine fronts at the continental shelves of austral South America Physical and ecological processes. *Journal of Marine Systems* **44**, 83–105.
- Anderson MJ and Willis TJ (2003) Canonical analysis of principal coordinates: a useful method of constrained ordination for ecology. *Ecology* **84**, 511–525.
- Anderson MJ, Gorley RN and Clarke KR (2008) *PERMANOVA+ For PRIMER: Guide to Software and Statistical Methods*. Plymouth: PRIMER-E.
- Arkhipkin AI (1990) Edad y crecimiento del calamar (*Illex argentinus*). *Frete Marítimo* **6**, 25–35.
- Arkhipkin AI and Scherbich JN (1991) Crecimiento y estructura intraspecifica del calamar, *Illex argentinus* (Castellanos, 1960) (Ommastrephidae) en invierno y primavera en el Atlántico sudoccidental. *Scientia Marina* **55**, 619–627.
- Arkhipkin AI, Hendrickson LC, Payá I, Pierce GJ, Roa-Ureta RH, Robin J-P and Winter A (2021) Stock assessment and management of cephalopods: advances and challenges for short-lived fishery resources. *ICES Journal of Marine Science* **78**, 714–730.
- Arkhipkin AI, Nigmatullin CM, Parkyn DC, Winter A and Csirke J (2023) High seas fisheries: the Achilles' heel of major straddling squid resources. *Reviews in Fish Biology and Fisheries* **33**, 453–474.
- Avigliano E, Ivanovic ML, Prandoni N, Méndez A, Pisonero J and Volpedo AV (2020) Statolith chemistry as a stock tag in the Argentine shortfin squid *Illex argentinus*. *Regional Studies in Marine Science* **38**, 102355.
- Bazzino G and Quiñones RA (1999) Características biológicas y ecológicas del calamar *Illex argentinus* (Cephalopoda, Ommastrephidae) relevantes para el ordenamiento de su pesquería en el Atlántico Sudoccidental. *Gayana* **2**, 87–100.
- Beer A, Ingram T and Randhawa HS (2019) Role of ecology and phylogeny in determining tapeworm assemblages in skates (Rajiformes). *Journal of Helminthology* **93**, 738–751.
- Bower SM and Margolis L (1991) Potential use of helminth parasites in stock identification of flying squid, *Ommastrephes bartrami*, in North Pacific waters. *Canadian Journal of Zoology* **69**, 1124–1126.
- Boyle PR and Rodhouse PG (2005) *Cephalopods: Ecology and Fisheries*. Oxford, UK: Blackwell Science.
- Braicovich PE, Ieno EN, Sáez M, Despos J and Timi JT (2016) Assessing the role of host traits as drivers of the abundance of long-lived parasites in fish-stock assessment studies. *Journal Fish Biology* **89**, 2419–2433.
- Brickle P, Olson PD, Littlewood TJ, Bishop A and Arkhipkin AI (2001) Parasites of *Loligo gahi* from waters off the Falkland Islands, with a phylogenetically based identification of their cestode larvae. *Canadian Journal of Zoology* **79**, 2289–2296.
- Brunetti NE (1988) Contribución al conocimiento biológico-pesquero del calamar argentino (Cephalopoda: Ommastrephidae, *Illex argentinus*) (PhD thesis). Universidad Nacional de La Plata, La Plata, Argentina.
- Brunetti NE, Elena B, Rossi GR, Ivanovic ML, Aubone A, Guerrero R and Benavides H (1998) Summer distribution, abundance and population structure of *Illex argentinus* on the Argentine shelf in relation to environmental features. *African Journal of Marine Science* **20**, 175–186.
- Brunetti NE, Ivanovic ML and Sakai M (1999) Calamares de importancia comercial en la Argentina. Biología, distribución, muestreo biológico. Instituto Nacional de Investigación y Desarrollo Pesquero (INIDEP), Mar del Plata, Argentina. pp. 45.
- Bush AO, Lafferty KD, Lotz JM and Shostak AW (1997) Parasitology meets ecology on its own terms: Margolis, et al. Revisited. *Journal Parasitology* **83**, 575–583.
- Caira JN, Jensen K, Pickering M, Ruhnke TR and Gallagher KA (2020) Intrinsic surrounding the life-cycles of species of *Clistobothrium* (Cestoda: Phyllobothriidea) parasitising large pelagic sharks. *International Journal for Parasitology* **50**, 1043–1055.
- Cipriani P, Giulietti L, Palomba M, Mattiucci S, Bao M and Levsen A (2019) Occurrence of larval ascaridoid nematodes in the Argentinean short-finned squid *Illex argentinus* from the Southwest Atlantic Ocean (off Falkland Islands). *International Journal of Food Microbiology* **297**, 27–31.
- Clarke KR and Gorley RN (2015) *PRIMER v7: User Manual/Tutorial*. Plymouth: PRIMER-E Ltd.
- Dawe EG and Brodziak JK (1998) Trophic relationships, ecosystem variability and recruitment. In Rodhouse PG, Dawe EG and O' Dor RK (eds), *Squid Recruitment Dynamics. The Genus Illex as a Model, the Commercial Illex*

- Species and Influences on Variability. Rome: FAO Fisheries Technical Paper, pp. 125–156.
- Dawe EG, Mercer MC and Threlfall W** (1982) On the stock identity of short-finned squid (*Illex illecebrosus*) in the Northwest Atlantic. *Northwest Atlantic Fisheries Organization* 7, 77–86.
- FAO** (2022) *The State of World Fisheries and Aquaculture 2022. Towards Blue Transformation. The State of World Fisheries and Aquaculture (SOFIA)*. Rome: FAO. doi: 10.4060/cc0461es
- Filatov DA** (2002) ProSeq: a software for preparation and evolutionary analysis of DNA sequence data sets. *Molecular Ecology Notes* 2, 621–624.
- González RA and Kroeck MA** (2000) Enteric helminths of the shortfin squid *Illex argentinus* in San Matías Gulf (Argentina) as stock discriminants. *Acta Parasitologica* 45, 89–93.
- González AF, Pascual S, Gestal C, Abollo E and Guerra A** (2003) What makes a cephalopod a suitable host for parasite? The case of Galician Waters. *Fisheries Research* 60, 177–183.
- Guardone L, Giusti A, Bilksa-Zajac E, Malandra R, Różycki M and Armani A** (2020) Molecular characterization of *Clistobothrium* sp. viable plerocercoids in fresh longfin inshore squid (*Doryteuthis pealeii*) and implications for cephalopod inspection. *Pathogens* 9, 596.
- Haimovici M and Pérez JAA** (1990) Distribution and sexual maturation of the Argentinean squid, *Illex argentinus* off Southern Brazil. *Scientia Marina* 54, 179–185.
- Haimovici M, Brunetti NE, Rodhouse PG, Csirke J and Leta RH** (1998). *Illex argentinus*. In Rodhouse PG, Dawe EG and O'Dor RK (eds), *Squid Recruitment Dynamics. The Genus Illex as a Model, the Commercial Illex Species and Influences on Variability*. Rome: FAO Fisheries Technical Paper, pp. 27–58.
- Haimovici M, Aguiar dos Santos R, Bainy MCRS, Gomes Fischer L and Cardoso LG** (2014) Abundance, distribution and population dynamics of the short fin squid *Illex argentinus* in Southeastern and Southern Brazil. *Fisheries Research* 152, 1–12.
- Hochberg FG** (1990) Diseases caused by Protists and Metazoans. In Kinne O (ed.), *Diseases of Marine Animals*. Hamburg, Germany: Biologische Anstalt Helgoland, pp. 47–200.
- Ivanovic ML** (2010) Alimentación del calamar *Illex argentinus* en la región patagónica durante el verano de los años 2006, 2007, 2008. *Revista de Investigación y Desarrollo Pesquero* 20, 51–63.
- Ivanovic ML and Brunetti NE** (1994) Food and feeding of *Illex argentinus*. *Antarctic Science* 6, 685–193.
- Ivanovic ML, Elena B, Rossi GR and Buono ML** (2016) Distribución, estructura poblacional y patrones migratorios del calamar (*Illex argentinus*, Ommastrephidae). Informe de Asesoramiento y transferencia. Instituto Nacional de Investigación y Desarrollo Pesquero (INIDEP) 69, 13 pp.
- Jennings S, Pinnegar JK, Polunin NVC and Boon TW** (2001) Weak cross-species relationships between body size and trophic level belie powerful size-based trophic structuring in fish communities. *Journal of Animal Ecology* 70, 934–944.
- Lester RJG** (1990) Reappraisal of the use of parasites for fish stock identification. *Australian Journal of Marine and Freshwater Research* 41, 855–864.
- Lester RJG and MacKenzie K** (2009) The use and abuse of parasites as stock markers for fish. *Fisheries Research* 97, 1–2.
- Lester RJG, Barnes A and Habib G** (1985) Parasites of skipjack tuna: fishery implications. *Fisheries Bulletin* 83, 343–356.
- Lin D, Chen X, Chen Y and Fan Z** (2015) Sex-specific reproductive investment of summer spawners of *Illex argentinus* in the southwest Atlantic. *Invertebrate Biology* 134, 203–213.
- Littlewood DTJ, Curini-Galletti M and Herniou EA** (2000) The interrelationships of proseriata (Platyhelminthes: Seriata) tested with molecules and morphology. *Molecular Phylogenetics and Evolution* 16, 449–466.
- Lockyer AE, Olson PD and Littlewood DTJ** (2003) Utility of complete large and small subunit rRNA genes in resolving the phylogeny of the Neodermata (Platyhelminthes): implications and a review of the cercomer theory. *Biological Journal of the Linnean Society* 78, 155–171.
- Luque JL and Poulin R** (2004) Use of fish as intermediate hosts by helminth parasites: a comparative analysis. *Acta Parasitologica* 49, 353–361.
- Nigmatullin CM** (1989) Las especies de calamar más abundantes del Atlántico sudoccidental y sinopsis sobre la ecología del calamar (*Illex argentinus*). *Frente Marítimo* 5, 71–81.
- Nigmatullin CM and Shukhgálder OA** (1990) Helminthofauna y aspectos ecológicos de las relaciones parasitarias del calamar (*Illex argentinus*) en el Atlántico Sudoccidental. *Frente Marino* 7, 57–68.
- Pascual S and Hochberg FG** (1996) Marine parasites as biological tags of cephalopod hosts. *Parasitology Today* 12, 324–327.
- Pascual S, González A, Arias C and Guerra A** (1995) Helminth infection in the short-finned squid *Illex coindetii* (Cephalopoda, Ommastrephidae) off NW Spain. *Diseases of Aquatic Organisms* 23, 71–75.
- Pierce GJ and Guerra A** (1994) Stock assessment methods used for cephalopod fisheries. *Fisheries Research* 21, 255–285.
- Pierce GJ, Valavanis VD, Guerra A, Jereb P, Orsi-Relini L, Bellido JM, Katara I, Piatkowski U, Pereira J, Balguerías E, Sobrino I, Lefkaditov E, Wang J, Santurtun M, Boyle PR, Hastie LC, MacLeod CD, Smith JM, Viana M, González AF and Zuur AF** (2008) A review of cephalopod-environment interactions in European Seas. *Hydrobiologia* 612, 49–70.
- Prandoni NI** (2022) Alimentación del calamar argentino (*Illex argentinus*) en la región patagónica durante febrero de 2022. Informe de Investigación. Instituto Nacional de Investigación y Desarrollo Pesquero (INIDEP) 098/22, 14 pp.
- Sacau M, Pierce JG, Wang J, Arkhipkin AI, Portela J, Brickle P, Santos MB, Zuur AF and Cardoso X** (2005) The spatio-temporal pattern of Argentine shortfin squid *Illex argentinus* abundance in the southwest Atlantic. *Aquatic Living Resources* 18, 361–372.
- Sardella NH, Roldán MI and Tanzola D** (1990) Helminths parasites of the calamar (*Illex argentinus*) en la subpoblación Bonaerense-Norpatagónica. *Frente Marítimo* 7, 53–56.
- Sayers EW, Bolton EE, Brister JR, Canese K, Chan J, Comeau DC, Connor R, Funk K, Kelly C, Kim S, Madej T, Marchler-Bauer A, Lanczycki C, Lathrop S, Lu Z, Thibaud-Nissen F, Murphy T, Phan L, Skripchenko Y, Tse T, Wang J, Williams R, Trawick BW, Pruitt KD and Sherry ST** (2022) Database resources of the national center for biotechnology information. *Nucleic Acids Research* 50, D20–D26.
- Schramm M** (1991) *Grillotia perelica* (Cestoda: Trypanorhyncha) plerocercoids in mullet (Pisces: Mugilidae) from estuaries in Transkei, southern Africa. *South African Journal of Marine Science* 11, 169–178.
- Smith PJ, Roberts PE and Hurst RJ** (1981) Evidence for two species of arrow squid in the New Zealand fishery. *New Zealand Journal of Marine and Freshwater Research* 15, 247–253.
- Tedesco P, Bevilacqua S, Fiorito G and Terlizzi A** (2020) Global patterns of parasite diversity in cephalopods. *Scientific Reports* 10, 11303.
- Threlfall W** (1970) Some helminth parasites from *Illex argentinus* (de Castellanos, 1960) (Cephalopoda: Ommastrephidae). *Canadian Journal of Zoology* 48, 195–198.
- Timi JT and Buchmann K** (2023) A century of parasitology in fisheries and aquaculture. *Journal of Helminthology* 97, 118.
- Timi JT and Poulin R** (2020) Why ignoring parasites in fish ecology is a mistake. *International Journal for Parasitology* 50, 755–761.
- Timi JT, Luque JL and Poulin R** (2010) Host ontogeny and the temporal decay of similarity in parasite communities of marine fish. *International Journal of Parasitology* 40, 963–968.
- Timi JT, Rossin MA, Alarcos AJ, Braicovich PE, Cantatore DMP and Lanfranchi AL** (2011) Fish trophic level and the similarity of non-specific larval parasite assemblages. *International Journal for Parasitology* 41, 309–316.
- Tkach VV, Littlewood DTJ, Olson PD, Kinsella JM and Swiderski Z** (2003) Molecular phylogenetic analysis of the Microphalloidea Ward, 1901 (Trematoda: Digenea). *Systematic Parasitology* 56, 115.
- Torres Alberto ML, Bodnariuk N, Ivanovic ML, Saraceno M and Acha EM** (2020) Dynamics of the confluence of Malvinas and Brazil currents, and a Southern Patagonian spawning ground, explain recruitment fluctuations of the main stock of *Illex argentinus*. *Fisheries Oceanography* 30, 127–141. doi: 10.1111/fog.12507
- Vidal EAG and Haimovici M** (1999) Digestive tract parasites in rhycho-teuthion squid paralarvae, particularly in *Illex argentinus* (Cephalopoda: Ommastrephidae). *Fishery Bulletin* 97, 402–405.
- Waeschenbach A, Webster BL, Bray RA and Littlewood DTJ** (2007) Added resolution among ordinal level relationships of tapeworms (Platyhelminthes: Cestoda) with complete small and large subunit nuclear ribosomal RNA genes. *Molecular Phylogenetics and Evolution* 45, 311–325.