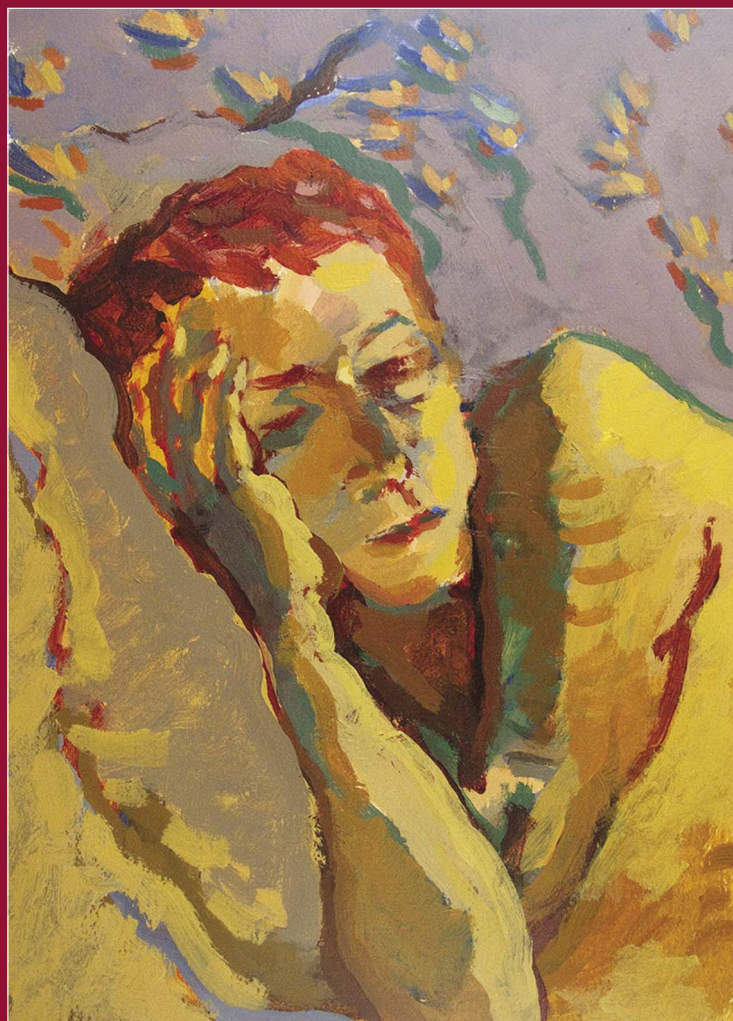


PREHOSPITAL and DISASTER MEDICINE

Volume 29, Number 1

February 2014



WADEM

CAMBRIDGE
UNIVERSITY PRESS

The Official Journal of the
World Association for Disaster and Emergency Medicine

CAMBRIDGE

JOURNALS

Now included in the
Thomson Reuters Social Sciences Citation Index

Health Economics, Policy and Law

Published in association with LSE Health

Editor-in-Chief

Adam Oliver, *London School of Economics and Political Science, UK*

International trends highlight the confluence of economics, politics and legal considerations in the health policy process. *Health Economics, Policy and Law (HEPL)* provides a forum for inter-disciplinary health policy studies, and will be of use to academics, policy makers, health care managers and professionals. *HEPL* is international in scope, publishing both theoretical and applied work, with articles on all aspects of health policy. *HEPL* is particularly interested in publishing innovative ideas that promise to contribute to improving health and healthcare policy. Considerable emphasis is placed on rigorous conceptual development and analysis, and on the presentation of empirical evidence that is relevant to the policy process. Review articles and debate sections bring readers in touch with current research developments and issues.



Health Economics, Policy and Law
is available online at:
<http://journals.cambridge.org/hep>

To subscribe contact Customer Services

in Cambridge:

Phone +44 (0)1223 326070

Fax +44 (0)1223 325150

Email journals@cambridge.org

in New York:

Phone (845) 353 7500

Fax (845) 353 4141

Email

subscriptions_newyork@cambridge.org

Free email alerts

Keep up-to-date with new
material – sign up at

journals.cambridge.org/register

For free online content visit:
<http://journals.cambridge.org/hep>



CAMBRIDGE
UNIVERSITY PRESS

Table of Contents

Editorial

- Questioning the Validity of Science** 1
Samuel J. Stratton, MD, MPH
- From Cradle of European Civilization to Grave Austerity: Does Greece Face a Creeping Health Disaster?** 2
Jeffrey Levett, PhD

Original Research

DISASTER HEALTH AND MEDICINE

- Dynamic Temperature and Humidity Environmental Profiles: Impact for Future Emergency and Disaster Preparedness and Response** 4
William J. Ferguson, BS; Richard F. Louie, PhD; Chloe S. Tang, BS; Kyaw Tha Paw U, PhD; Gerald J. Kost, MD, PhD, MS, FACB

- Chronic Conditions and Household Preparedness for Public Health Emergencies: Behavioral Risk Factor Surveillance System, 2006–2010** 13
Jean Y. Ko, PhD; Tara W. Strine, PhD, MPH; Pamela Allweiss, MD, MPH

HUMANITARIAN AFFAIRS

- Médecins Sans Frontières Experience in Orthopedic Surgery in Postearthquake Haiti in 2010** 21
Carrie Lee Teicher, MD; Kathryn Alberti; Klaudia Porten, MD; Greg Elder, MD; Emmanuel Baron, MD; Patrick Herard, MD

PREHOSPITAL CARE

- Characteristics of Hospitals Diverting Ambulances in a California EMS System** 27
Christopher A. Kahn, MD, MPH; Samuel J. Stratton, MD, MPH; Craig L. Anderson, MPH, PhD

- Is Prehospital Endotracheal Intubation Associated with Improved Outcomes in Isolated Severe Head Injury? A Matched Cohort Analysis** 32
Efstathios Karamanos, MD; Peep Talving, MD, PhD; Dimitra Skiada, MD; Melanie Osby, MD; Kenji Inaba, MD; Lydia Lam, MD; Ozgur Albu, MD; Demetrios Demetriades, MD, PhD

- Outcome Accuracy of the Emergency Medical Dispatcher's Initial Selection of a Diabetic Problems Protocol** 37
Jeff Clawson, MD; Greg Scott, MBA; Weston Lloyd, MPH; Brett Patterson; Tracey Baron, BSc; Isabel Gardett, PhD; Christopher Olola, PhD

- Use of a Hooked Cutting Device Compared with Scissors for the Emergency Exposure of Critically Ill and Injured Patients** 43
Nelson Tang, MD; Matthew J. Levy, DO, MSc; Jeffrey Harrow, MD; Nina Bingham, RN, BSN

- Diagnosis According to Time of Arrival at "The Great New York State Fair"** 47
Katherine Nacca, MD; Jay Scott, BS, NREMT-P; William Grant, EdD

- Reduction in STEMI Transfer Times Utilizing a Municipal "911" Ambulance Service** 50
Joseph C. Tennyson, MD; Mark R. Quale, MD

Comprehensive Review

- Disaster Health After the 2011 Great East Japan Earthquake** 54
Mayumi Kako, PhD, RN; Paul Arbon, PhD, RN; Satoko Mitani, PhD, RN

Special Report

- Reshaping US Navy Pacific Response in Mitigating Disaster Risk in South Pacific Island Nations: Adopting Community-Based Disaster Cycle Management** 60
Erik J. Reaves, DO, MTM&H; Michael Termini, MD, MPH, DTM&H; Frederick M. Burkle, Jr., MD, MPH, DTM
- Development of an Evaluation Framework Suitable for Assessing Humanitarian Workforce Competencies During Crisis Simulation Exercises** 69
Hilarie Cranmer, MD, MPH; Jennifer L. Chan, MD, MPH; Stephanie Kayden, MD, MPH; Altaf Musani; Philippe E. Gasquet; Peter Walker, PhD; Frederick M. Burkle, Jr., MD, MPH, DTM; Kirsten Johnson, MD, MPH
- Emergency Medicine Systems Advancement through Community-based Development** 75
Martha M. Bloem, MPAff; Christina M. Bloem, MD, MPH; Juliana Rosentsveyg, BS; Bonnie Arquilla, DO
- A Sustainable Training Strategy for Improving Health Care Following a Catastrophic Radiological or Nuclear Incident** 80
Daniel J. Blumenthal, PhD; Judith L. Bader, MD; Doran Christensen, DO; John Koerner, MPH.; John Cuellar, MEd; Sidney Hinds, MD; John Crapo, MS; Erik Glassman, MS; A. Bradley Potter, MA; Lynda Singletary, MA
- Solastalgia: Living with the Environmental Damage Caused By Natural Disasters** 87
Sri Warsini, MMed; Jane Mills, PhD; Kim Usher, PhD

Case Report

- Reconsidering Policy of Casualty Evacuation in a Remote Mass-Casualty Incident** 91
Bruria Adini, PhD; Robert Cohen, PhD; Elon Glassberg, MD, MHA; Bella Azaria, MD; Daniel Simon, MD; Michael Stein, MD; Yoram Klein, MD; Kobi Peleg, PhD, MPH

Brief Report

- Cervical Spine Fractures in Elderly Patients with Hip Fracture After Low-Level Fall: An Opportunity to Refine Prehospital Spinal Immobilization Guidelines?** 96
Lori L. Boland, MPH; Paul A. Satterlee, MD; Paul R. Jansen, MPH
- Waterworks, a Full-Scale Chemical Exposure Exercise: Interrogating Pediatric Critical Care Surge Capacity in an Inner-City Tertiary Care Medical Center** 100
Vikas S. Shah, MD; Lauren C. Pierce, MD; Patricia Roblin, MS; Sarah Walker; Marte N. Sergio; Bonnie Arquilla, DO, FACEP
- Use of Tissue Adhesive as a Field Expedient Barrier Dressing for Hand Wounds in Disaster Responders** 107
Matthew J. Levy, DO, MSC; Nelson Tang, MD

Letter To The Editor

- The Long Backboard vs the Vacuum Mattress** 110
Neil McDonald, PCP, MPhil; Mike Webster, PCP, BA, MADEM(can); Aaron Orkin, MD, MSC, MPH, CCFP; David VanderBurgh, MD, CCFP(EM); David E. Johnson, MD
- Author Reply** 111
Babak Mahsbidfar, MD; Mani Mofidi, MD; Ali-Reza Yari, MD; Saied Mehrsorosh, BSc

Editorial Office
World Association for Disaster and Emergency
Medicine (WADEM), Madison,
Wisconsin USA

Editor-in-Chief
Samuel J. Stratton, MD, MPH

Managing Editor
Mona C. Johnson, MBA

Editorial Assistants
Ellen Johnson
Allison Sambo

Publisher
Cambridge University Press
32 Avenue of the Americas
New York, NY 10013-2473 USA

Prehospital and Disaster Medicine (ISSN 1049-023X) is published bimonthly in the months of February, April, June, August, October, December, by Cambridge University Press for the World Association for Disaster and Emergency Medicine. Prehospital and Disaster Medicine incorporates the Journal of the World Association for Emergency and Disaster Medicine and the Journal of Prehospital Medicine.

Editorial Information: All manuscripts must be submitted through the Journal's online submission platform, ScholarOne Manuscripts: <http://mc.manuscriptcentral.com/pdm>.

2014 Subscription Information: Institutions print and electronic: US\$599.00 in the USA, Canada, and Mexico; UK£365.00+VAT elsewhere. Institutions electronic only: US\$442.00 in the USA, Canada, and Mexico; UK£270.00+VAT elsewhere. Individuals print and electronic: US\$182.00 in the USA, Canada, and Mexico; UK£111.00+VAT elsewhere. Individuals electronic only: US\$132.00 in the USA, Canada, and Mexico; UK£75.00+VAT elsewhere. Single Part: US\$109.81 in the USA, Canada, and Mexico; UK£66.91+VAT elsewhere. Prices include postage and insurance. Airmail or registered mail is extra. Back volume prices are available upon request. Claims of non-receipt or damaged issues must be filed within three months of cover date.

Comprehensively indexed by the National Library of Medicine (MEDLINE), Cumulative Index to Nursing and Allied Health (CINAHL) and Health Star Cumulative Index. The database is available online via BRS, Data-Star, and DIA-LOG, and on CD-ROM through CD Plus, Compact Cambridge and Silver Platter. Abstracts and search capability available on the Internet at <http://journals.cambridge.org/PDM>.

Copyright © 2014 by the World Association for Disaster and Emergency Medicine.

Cover Artwork

Tessa Resting, acrylic painting by Vera Nikiforov

After earning a BFA in Painting at Boston University (Massachusetts USA) and an MFA in Painting at American University (Washington, DC USA), Ms. Nikiforov went on to careers in fine arts, teaching, and graphic arts. As a fine artist, she received a grant from the Minnesota (USA) State Arts Board and won awards in juried exhibitions in California. In 2008, 2009, 2012, and 2013, she received awards at the Annual Madison (Wisconsin USA) Art Guild Exhibitions. She was also invited to participate in the Hospice Mask-er-Aid, a Madison tradition. In addition to producing commissioned and personal oil and acrylic paintings, she has worked as a courtroom artist for television stations in Minnesota and has produced a variety of commercial pieces for small businesses as a freelance artist. Currently, she is a member of the Madison Art Guild as well as Wisconsin Visual Artists (formerly Wisconsin Painters and Sculptors).

Ms. Nikiforov's work can be viewed at www.veranikiforov.com.

EDITOR-IN-CHIEF

Samuel J. Stratton, MD, MPH
University of California-Los Angeles
Los Angeles, California, USA

EMERITUS**EDITOR-IN-CHIEF**

Marvin L. Birnbaum, MD, PhD
University of Wisconsin-Madison
Madison, Wisconsin, USA

MANAGING EDITOR

Mona C. Johnson, MBA

SECTION EDITORS*Emergency Medical Services*

**Darren Walter, FRCS(Ed)
FCEM, FIMC**
University Hospital South
Manchester
Manchester, UK

Humanitarian Affairs

**Frederick M. Burkle, MD,
MPH, DTM**
Harvard Humanitarian Initiative
Harvard University
Cambridge, Massachusetts, USA

Mass Gathering Medicine

Paul Arbon, PhD
School of Nursing and Midwifery
Flinders University
Adelaide, South Australia

Nursing

**Elaine Daily, RN, BSN,
FCCM, FAHA**
Madison, Wisconsin, USA

Oceania

Graeme McColl
Christchurch, New Zealand

Psychosocial

Gloria Leon, PhD
University of Minnesota
Minneapolis, Minnesota USA

ASSOCIATE EDITORS

David A. Bradt, MD, MPH
Royal Melbourne Hospital
Melbourne, Australia

Wolfgang F. Dick, MD, PhD
Mainz, Germany

Kimball Maull, MD, FACS

Department of Surgery
Hamad General Hospital
Doha, Qatar

Steven Rottman, MD

University of California-Los Angeles
Los Angeles, California, USA

Geert Synaeve, MD

Brussels, Belgium

EDITORIAL BOARD

Carol Amaratunga, PhD

School of Child and Youth
Development
University of Victoria Research
Association of the Justice
Institute of British Columbia
Victoria BC, Canada

Frank Archer, MD

Department of Community
Emergency Health &
Paramedic Practice
Monash University
Melbourne, Australia

Jeffrey Arnold, MD

Department of Emergency
Medicine
Santa Clara Valley Medical
Center
San Jose, California, USA

Yaron Bar-Dayan, MD, MHA

Israeli Defense Forces Home
Front Command
Or-Yehuda, Israel

Joost Bierens, MD, PhD

Amsterdam, The Netherlands

Tareq Bey, MD

Saudi Arabia

Richard A. Bissell, PhD

Center for Emergency Education
and Disaster Research
University of
Maryland-Baltimore
Baltimore, Maryland, USA

Felipe Cruz-Vega, MD

Office of Social Security
Mexico City, Mexico

**Robert A. DeLorenzo, MD,
MSM, FACEP**

Medical Corps
United States Army
San Antonio, Texas, USA

Claude de Ville de Goyet, MD

Brussels, Belgium

Judith Fisher, MD

Washington, DC, USA

Erik S. Gaull

George Washington University
Washington, DC, USA

Michael Gunderson

Integral Performance Solutions
Lakeland, Florida, USA

Pinchas Halpern, MD

Critical Care and Emergency
Medicine
Tel Aviv University
Tel Aviv, Israel

Keith Holtermann, MD

George Washington University
Washington, DC, USA

Mark Johnson, MPA

Juneau, Alaska, USA

Mark Keim, MD

Centers for Disease Control and
Prevention
Atlanta, Georgia, USA

Todd J. LeDuc, EMT-P

Broward Sheriff Fire Rescue
Ft. Lauderdale, Florida, USA

Lidia Mayner, PhD

School of Nursing and Midwifery
Flinders University
Adelaide, South Australia

**Andrew Milsten, MD, MS,
FACEP**

University of Massachusetts
Emergency Medicine
Worcester, Massachusetts, USA

Jerry Overton

IAED Emergency Clinical
Advice System & Standards
Board
Salt Lake City, Utah, USA

Paul Paris, MD

Center for Emergency Medicine
University of Pittsburgh
Pittsburgh, Pennsylvania, USA

**Lynda Redwood-Campbell,
MD, MPH**

Department of Family Medicine
McMaster University
Hamilton, Ontario, Canada

Edward Ricci, PhD

Behavioral and Community
Health Sciences
University of Pittsburgh
Pittsburgh, Pennsylvania, USA

Leonid Roshal, MD

Institute of Pediatrics
Academy of Medical Sciences
Moscow, Russia

Don Schramm

Disaster Management Center
University of Wisconsin-Madison
Madison, Wisconsin, USA

James M. Shultz, PhD

Center for Disaster & Extreme
Event Preparedness
University of Miami
Miami, Florida, USA

**Wayne Smith, BSC, MChB,
EMDM, FCEM(SA)**

Division of Emergency Medicine
University of Cape Town
Cape Town, South Africa

Knut Ole Sundnes, MD

Baerum Hospital
Solo, Norway

Takashi Ukai, MD

Hyogo Emergency Medical
Center
Hyogo, Japan

Michael Van Rooyen, MD

Harvard Humanitarian Initiative
and Department of Emergency
Medicine, Brigham and
Women's Hospital
Boston, Massachusetts, USA

Richard Zoraster, MD, MPH

Kaneohe, Hawaii, USA

Aims and Scope: The mission of *Prehospital and Disaster Medicine* (PDM) is the distribution of information relevant to the practice of out-of-hospital and in-hospital emergency medical care, disaster health, and public health and safety. PDM provides an international forum for the reporting and discussion of scientific studies, both quantitative and qualitative, that have relevance to the above practices. The major objectives are: (1) the improvement of the types and quality of the care delivered to patients with perceived medical emergencies and to victims of multi-casualty accidents or disasters, including the public health and safety aspects of such events; and (2) the prevention and/or mitigation of the occurrence of such events and of the effects of these events upon the human population and environment.

Editorial Office: Prehospital and Disaster Medicine, 3330 University Avenue, Suite 130, Madison, Wisconsin 53705, USA. Telephone: (+1) (608) 819-6604; Facsimile (+1) (608) 819-6055; E-mail: pdm@wadem.org

Publishing, Production, and Advertising Office: Cambridge University Press, 32 Avenue of the Americas, New York, NY 10013-2473, United States; USAdSales@cambridge.org.

Subscription Offices: (for USA, Canada, and Mexico) Cambridge University Press, 32 Avenue of the Americas, New York, NY 10013-2473, United States; (for UK and elsewhere) Cambridge University Press, The Edinburgh Building, Shaftesbury Road, Cambridge CB2 8RU, UK.

2014 Subscription Information: *Prehospital and Disaster Medicine* (Print ISSN 1049-023X; Electronic ISSN 1945-1938) is published bimonthly in the months of February, April, June, August, October, and December by Cambridge University Press, 32 Avenue of the Americas, New York, NY 10013-2473, United States/Cambridge University Press, The Edinburgh Building, Shaftesbury Road, Cambridge CB2 8RU, UK for the World Association for Disaster and Emergency Medicine. 2014 Annual subscription rates: Institutions print and electronic: US\$599.00 in the USA, Canada, and Mexico; UK£365.00+VAT elsewhere. Institutions electronic only: US\$442.00 in the USA, Canada, and Mexico; UK£270.00+VAT elsewhere. Individuals print and electronic: US\$182.00 in the USA, Canada, and Mexico; UK£111.00+VAT elsewhere. Individuals electronic only: US\$132.00 in the USA, Canada, and Mexico; UK£75+VAT elsewhere. Single Part: US\$109.81 in the USA, Canada, and Mexico; UK£66.91+VAT elsewhere. Prices include postage and insurance. Airmail or registered mail is extra. Back volume prices are available upon request.

Submissions: All manuscripts must be submitted through the Journal's online submission platform, ScholarOne Manuscripts, at <http://mc.manuscriptcentral.com/pdm>. Please review the Author Instructions and Author Checklist available online before finalizing a submission.

Indexing: National Library of Medicine (MEDLINE), Cumulative Index to Nursing and Allied Health (CINAHL), and Health Star Cumulative Index.

© World Association for Disaster and Emergency Medicine 2014. All rights reserved. No part of this publication may be reproduced, in any form or by any means, electronic, photocopying, or otherwise, without permission in writing from Cambridge University Press. Policies, request forms, and contacts are available at: <http://www.cambridge.org/rights/permissions/permission.htm>. Permission to copy (for users in the United States) is available from Copyright Clearance Center Transactional Reporting Service, 222 Rosewood Drive, Danvers, MA 01923, USA. <http://www.copyright.com>, email: info@copyright.com.

Printed in United States of America on acid-free paper.

Postmaster: Send address changes in the USA and Canada to *Prehospital and Disaster Medicine*, Subscription Department, Cambridge University Press, 100 Brook Hill Drive, West Nyack, NY 10994-2133, USA.

Periodical postage rate paid at New York, NY and additional mailing offices.

Call for Artwork

The cover design of *Prehospital and Disaster Medicine* calls for a photograph of relevant artwork.

If you have access to artwork that you think may be appropriate, please submit a high-resolution .TIF or .EPS file to:

Mona Johnson, Managing Editor
E-mail: mjohnson@wadem.org

All submissions will be evaluated by a panel of judges.
Items not selected will be returned to the sender.