


REPORT

The Archaeological Site of Tumshukayko (Peru): A Preliminary Report

Carolina Orsini¹ , Elisa Benozzi², Paolo Rossi³ and José S. Querevalú Ulloa⁴

¹Sezione di Archeologia ed Etnografia, Museo delle Culture (Mudec), Milan, Italy, ²University of Gibraltar, Campus Europa Point, Gibraltar, United Kingdom, ³Dipartimento di Ingegneria “Enzo Ferrari,” Università di Modena e Reggio, Italy and ⁴Asociación YIHDES, Lima, Peru

Corresponding author: Carolina Orsini; Email: carolina.orsini@comune.milano.it

(Received 23 December 2022; revised 21 June 2023; accepted 14 September 2023)

Abstract

In 2021, an Italian-Peruvian archaeological team began a research project in the Ancash Sierra to investigate the origins of early monumental architecture in the northern-central Andes. The large complex of Tumshukayko—located in the northern part of the town of Caraz in Ancash, Peru—was immediately found to be the most suitable site for this project. This report presents an initial description of the current state of the remains, topographical data, and test pit results. Preliminary data suggest that Tumshukayko is a multicomponent site comprising at least two mounds that were built during the Initial Formative period (2500–1500 BC).

Resumen

En 2021, un equipo arqueológico italo-peruano inició un nuevo proyecto de investigación en la sierra de Ancash con el objetivo de buscar los orígenes de la arquitectura monumental temprana en los Andes Norcentrales. El gran complejo de Tumshukayko (ubicado en la parte norte de la ciudad de Caraz, Ancash, Perú), apareció inmediatamente como el sitio más adecuado para este fin. El propósito de este informe es proporcionar una descripción inicial del estado actual de las evidencias, publicar la topografía del sitio y los resultados de los cateos de prueba. Los datos preliminares sugieren que Tumshukayko es un sitio multicomponente compuesto por al menos dos montículos, que fueron construidos en el periodo Formativo inicial (2500-1500 aC).

Keywords: Ancash; Initial Formative period; Tumshukayko; monumentality; early complex societies

Palabras clave: Ancash; Formativo inicial; Tumshukayko; monumentalidad; sociedades complejas tempranas

The origin of social complexity and its connection to monumental buildings in the Andes have long been debated (Burger and Rosenswig 2012; Isbell and Silverman 2002). Indeed, the connection between monumental architecture and early complex societies—in particular, agro-maritime economies in the coastal area of Peru—has been the subject of academic research for more than 20 years (for a review, see Reindel and Hermann 2018).

Since the Archaic period (7000–3000 BC), the Ancash highlands have offered favorable environmental conditions for human settlement; evidence of the oldest (6000 BC) cultivated vegetal species and textile fragments on the continent were found inside the Guitarrero Cave in Callejón de Huaylas near Caraz (Jolie et al. 2011; Lynch 1980). In the southern section of the same region, Quiñones (2016) recorded Middle and Final Archaic stone-age-like architecture (e.g., Ragra; Quiñones 2016:27). In addition to Huaricoto, which was excavated nearly 40 years ago (Burger and Salazar-Burger 1985), early architecture has been recently studied in different sites of the region, including Kareycoto, Acshipucoto (Munro 2018), and Perolcoto (Bria 2017). These sites have shared

characteristics linked to variations of the same ideology, with common rituals organized around the Mito/Kotosh religious tradition (Bonnier 1997). Whether Tumshukayko belongs to this tradition is one of the main questions motivating our research.

In 2021, drawing from these observations, we began a long-term project to investigate the Initial Formative period (2500–1500 BC) monumentality in the northern-central Andes. We focused on the site of Tumshukayko (Caraz, Ancash; Figure 1) because of its monumental size and its central and elevated location within the Callejón de Huaylas. The team completed an initial survey in 2021, followed by preliminary excavations in 2022.

The archaeological site was traditionally identified as an artificial mound, Tumshukayko A, located 1 km from the town of Caraz (2,250 m asl). However, several oral testimonies and aerial photographs taken in 1948, when the urban area of Caraz was reduced, suggested that the original site covered a larger surface, including other mounds, such as Tumshukayko B. The objective of the first two field campaigns was to understand and map the actual size of the archaeological area.

Limited excavations at the site were conducted by Valladolid (1990). Alberto Bueno (2003, 2005) worked most extensively, but his results remained largely unpublished, and the artifacts were unstudied. The current conformation of Tumshukayko is the result of excavations carried out by



Figure 1. Location of Tumshukayko in the Caraz Province (Ancash Department, Peru).

the local population at the urging of Mariano Araya, an amateur who had previously worked with Valladolid, for the purpose of uncovering architectural features to make the site a tourist attraction. This operation compromised the stratigraphic sequence in some areas of the site, and the accumulation of backdirt made it very difficult to interpret the structures in the lower parts of the mound. The materials from Araya's excavations are held in the local Hernán Osorio Herrera Municipal Museum.

The Monumental Archaeological Area and the Excavations

Tumshukayko A

Tumshukayko A has a visible extension of 3 ha and a height of approximately 50 m. It comprises various artificial platforms (Figure 2) constructed by accumulating stones and earth that are retained by monumental single-revetment walls that serve as platform faces or revetment walls. In some cases, these revetment walls are very close to each other, as are the so-called *chakana* walls (nos. 11 and 12 in Figure 2) in the northern part of Mound A (Figure 3). Many other features—including funerary and domestic architecture, ramps, and stairways to connect the various spaces and levels—were built on the platforms mainly from the Initial Formative period to modernity.

Previous studies (Querevalú 2014) and our 2021–2022 fieldwork identified more than 20 possible platform faces. In this section, we describe only those relevant to the mound construction process.

All the earlier mentioned structures are visible at present and are identified with a number. To better understand the ancient morphology of the site and the relationship between its structures, we dug seven test pits in Sector A (Figure 2).

Excavations revealed that, in an initial stage of mound construction, platform face 2 was probably built together with platform face 20: thus, they were faces of two overlapping platforms. At a later stage, platform face 1 was erected very close to platform face 2 (Figure 4), probably to modify the preexisting platform (Figure 5). In the flat space between structures 1, 2, and 20 is a

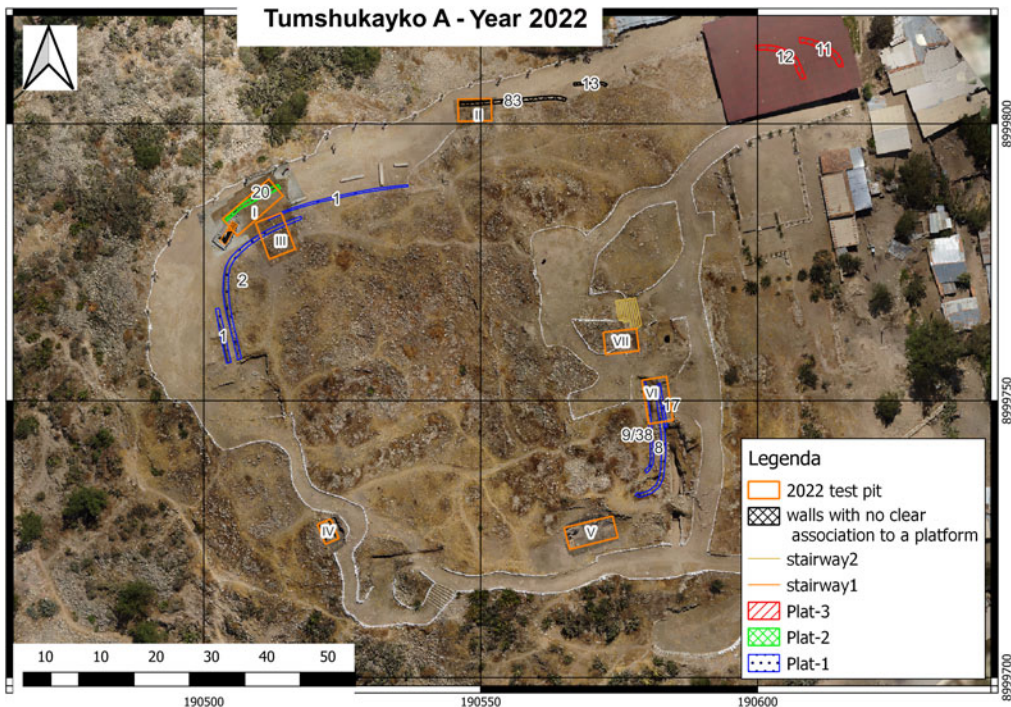


Figure 2. Orthophoto of Tumshukayko A with the structures mentioned in the text and the location of the test pits.



Figure 3. Orthophoto of revetment walls 11 and 12 in the northern sector of Tumshukayko A. (Color online)



Figure 4. Orthophoto of revetment wall 2 in the northern sector of Tumshukayko A. On the left side, revetment wall 1 stands immediately in front of wall 2, partially covering the façade. (Color online)

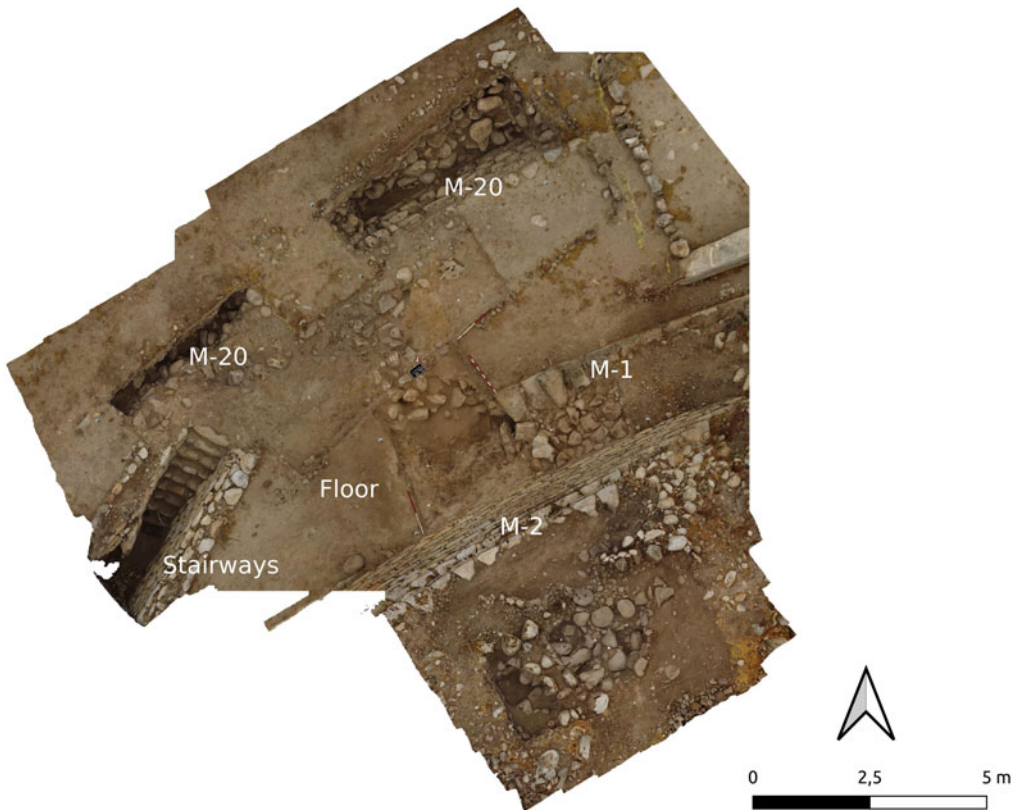


Figure 5. Test pit III with structures 1, 2, and 20 (M-1, M-2, and M-20 in the figure). Note the stairway, which leads to a lower platform that has not yet been excavated. (Color online)



Figure 6. Stairways in Tumshukayko A. (Color online)

stairway that leads to a lower platform that is not visible in the current morphology of the site (Figure 6).

In the area near platform faces 1 and 2, a test pit revealed a previously unknown platform face, which was registered as no. 83. Near this one is also preserved platform face 13. These two platform faces are parallel and are very near platform revetment walls (see Figure 2), like the others observed at the site, but their function and relative chronology must be further investigated.

In test pit VII, dug in the central part of Tumshukayko A, we identified another revetment wall, no. 38 (Figures 2 and 7). In addition, we found a superimposition of platform faces very close to one another—nos. 8, 9, 17, and 38 itself—which we observed could be a characteristic feature of the Initial Formative period architecture of the site.

Finally, in this same area, there is a monumental staircase (Stairway 2 in Figure 2) facing east, leading to the highest platform of the mound. We discovered that its lowest portion had been covered at a later stage to limit access to the upper platform.

During the excavations, we recovered large quantities of ceramic artifacts dating from the Late Formative period (800–400 BC) to modernity (Figure 8). Intriguingly, in some contexts, such as in test pits I, II, and VII, ceramics were absent, but stone and bone objects were present. Since this is characteristic of Initial Formative period cultural contexts (3000–1500 BC), we argue that layers without ceramics could belong to this preceramic phase of the mound.

Tumshukayko B

On the southern side of Tumshukayko A, we identified a smaller mound, Tumshukayko B, which measured approximately 2,500 m² with a height of 5 m; it was covered by thick vegetation (Figure 9). The only visible architectural remain was a poorly preserved revetment wall (no. 102 in Figure 8) that supported the upper portion of the mound.

Whereas the tests pits conducted in Mound A had the aim of determining the correlations between the architectural features and morphology of the site, in this case, the object of the investigation was to determine the features of the mound.

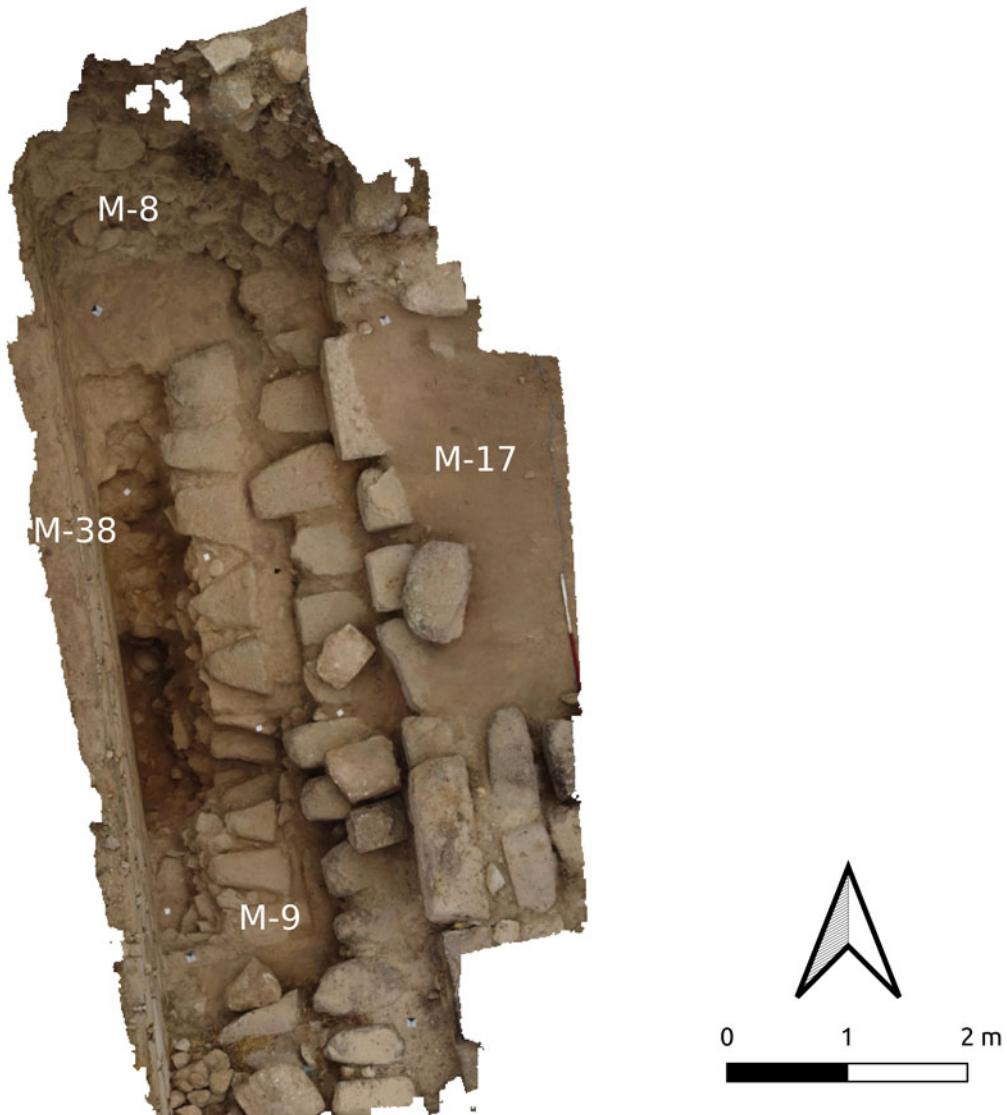


Figure 7. Test pit VII revealed a sequence of monumental revetment walls (M-38, M-8, M-9, and M-17 in the figure) placed very close to one another. (Color online)

A 10×5 m trench was dug to understand its various construction phases, chronology, and relationship to Tumshukayko A. Excavations revealed that Mound B might have been shaped as a truncated pyramid in its final phase and that it might have developed over at least two artificial platforms, with revetment walls made of irregular stones and fluvial pebbles bound by fine-grained mortar. Both platforms were oriented along an east-west direction (Figure 9). The upper one, defined by platform face 102, was connected to a partially conserved floor of clay-like yellowy earth. Beneath this level, we discovered another large platform that had been built with a similar technique and almost the same orientation as the other: its platform face wall (no. 122 in Figure 10) was conserved for a height of 2 m and was connected to a lower floor (the second level of the platform).

We retrieved large quantities of ceramic artifacts dating to diverse periods but mainly from the Late Formative (800–400 BC) and Early Intermediate (AD 0–600) periods. Fragments

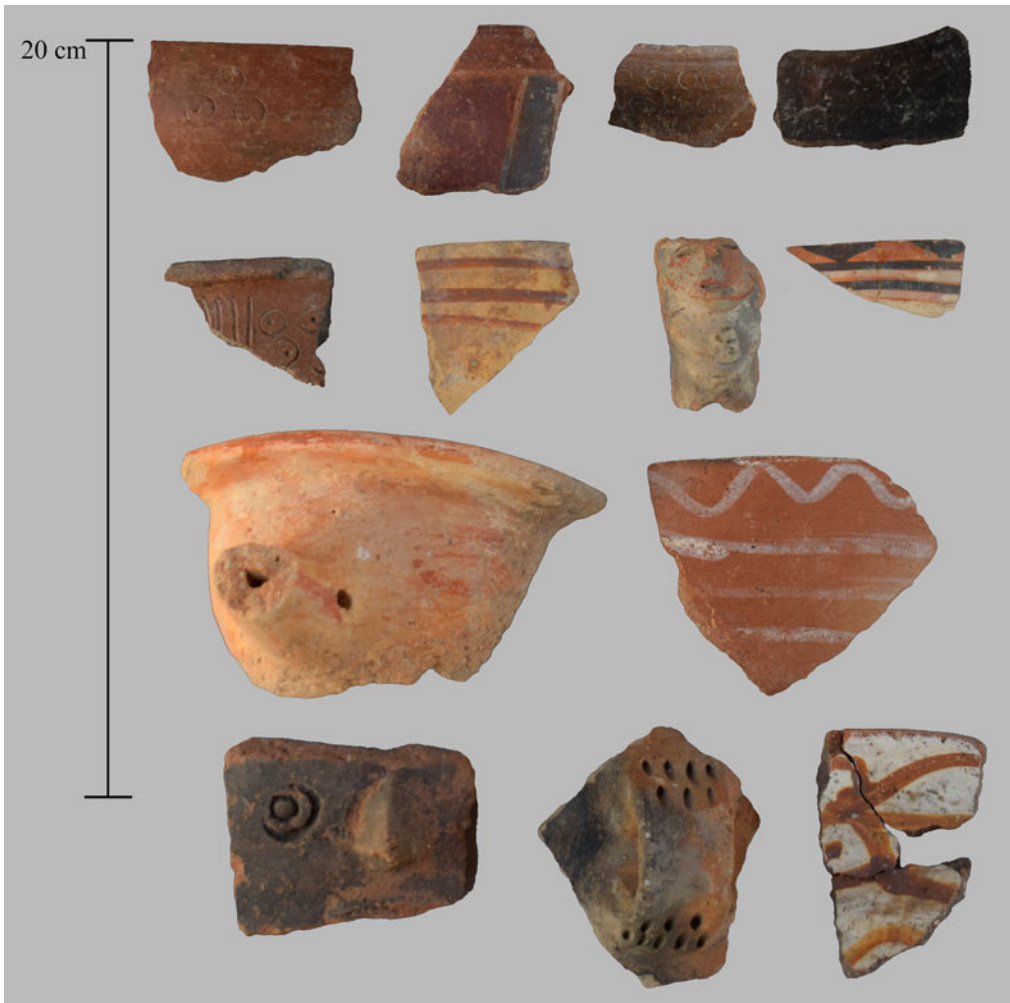


Figure 8. A sample of ceramics of different epochs and styles from Tumshukayko A.

in the upper layers belong to later periods—from the Middle Horizon (AD 600–1000) to the colonial era.

Below these ceramic layers, another revetment wall was found (no. 132) that featured a different orientation—north-south—associated with a floor that probably defined another level of the platform. Its construction was similar to that of the Tumshukayko A artificial platform faces, although the stones were less smooth and seemed unfinished. It was partially dismantled to construct platform face 122. This level had no ceramics and was associated with subcircular structures with remains of bones, currently under study (Figure 9); it was constructed with stones and pebbles in the fill of the artificial embankment of the platform. Due to the resemblance with the Mound A main structures described earlier, we suggest that this platform level, whose construction technique strongly differs from that of the upper levels, may have been built during the Initial Formative period.

Discussion

Tumshukayko has long been identified with the mound that we defined as Sector A, and thus far, the size of the monumental complex and of the mound itself has neither been extensively studied nor debated. The several studies conducted of Tumshukayko A have focused on bringing to light its

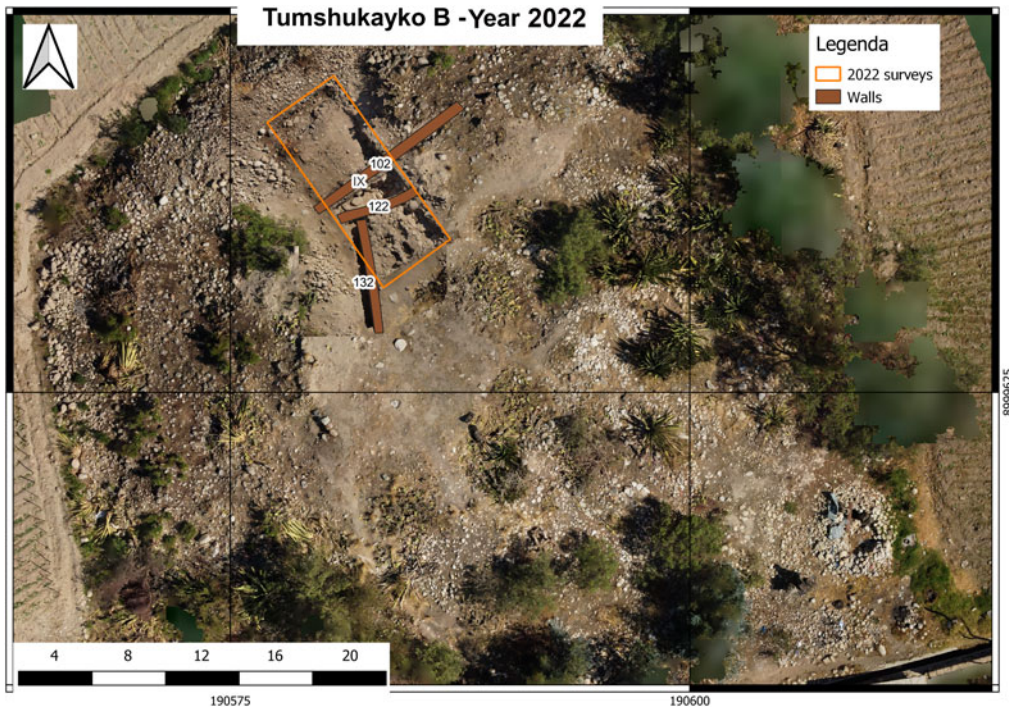


Figure 9. Orthophoto of Tumshukayko B with the structures mentioned in the text and the location of the test pit. (Color online)

structures, without an effort to better understand what reason or purpose undergirded the overall construction. We were interested in determining the layout of the mound because it is crucial to understanding the monumentality and social complexity at the site. To accomplish this goal, our test pits focused on identifying the physical relationships among the visible remains, identifying new ones, and setting them within a general layout (Figure 2).

This focus would allow us to obtain further knowledge about the original volumetry of Mound A and the diachronic development of the platforms that comprised it. Furthermore, we wanted to understand the possible connections between the different architectural features (especially the revetment walls) that had similar construction techniques and were located on the same level: this analysis is helping us determine a layout of some portions of the site, which no longer appear “disconnected” from one another but take on a shared meaning.

Although this work has just begun, increasing data support our hypotheses on the number and layout of platforms comprising the main pyramid-shaped mound. Based on the data obtained during our first excavation campaign, we propose the following:

- The northern part of Sector A may have had at least three platforms (Figure 2). From top to bottom, revetment walls 1 and 2 would form platform 1, the highest one, whereas revetment wall 20 was the only one identified for platform 2. Revetment walls 11 and 12 would make up platform 3, which is actually the lowest platform. Revetment walls 13 and 83 are not yet firmly associated with a specific platform.
- Stairway 1 connects platforms 2 and 3.
- In the southeast part of the higher platform of Mound A, we found four revetment walls (nos. 8, 9, 17 and 38) built very close to each other. However, in the northwestern corner, there are apparently only two platform faces, 1 and 2. We need to further investigate the reason for this discrepancy. Was there more remodeling along the east facade compared to the west? Are there traces of further modifications in the west sector that have not been identified yet?

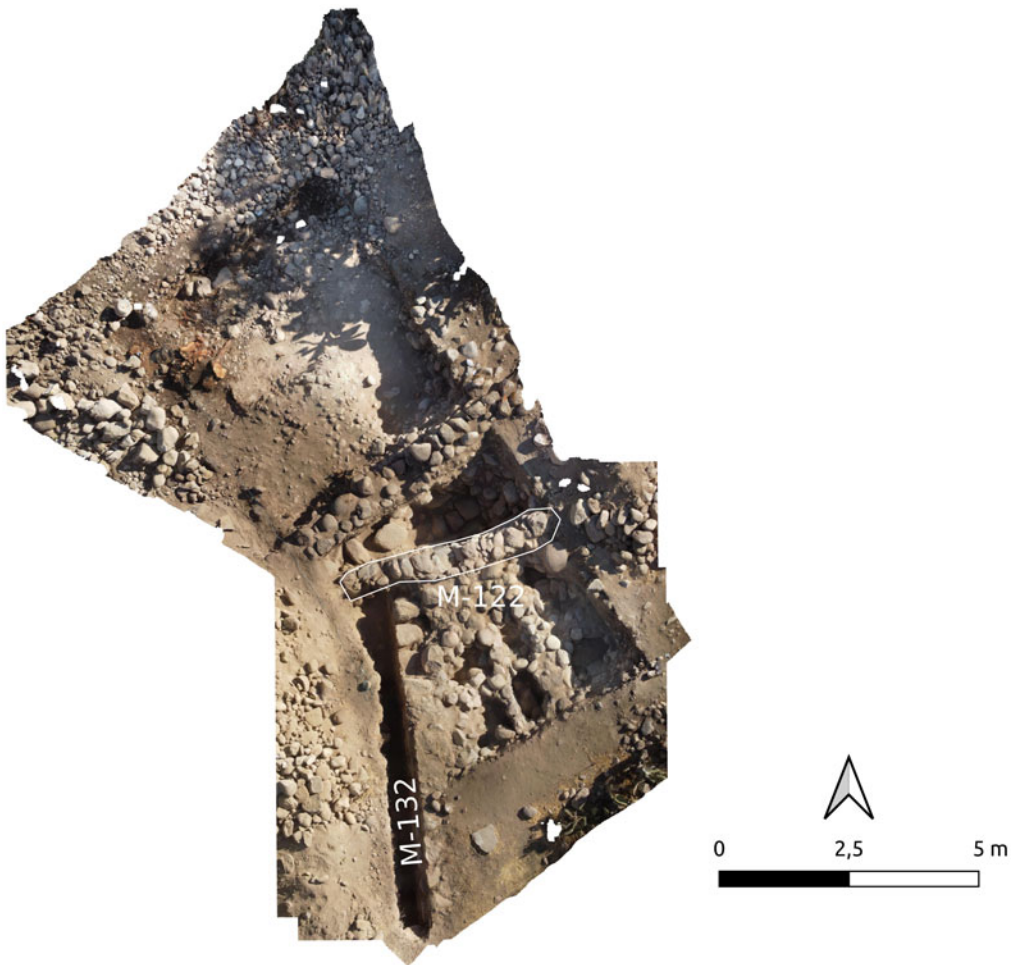


Figure 10. Close view of test pit IX in Tumshukayko B. Note revetment walls 132 and 122 (M-132 and M-122 in the figure). (Color online)

- Stairway 2 would have been the main access to the upper platform and probably to the entire complex, which was oriented to the east toward the glacier peaks. This might be why it was subject to several remodeling actions. The presence of the stairway could be related to the apparently different forms of remodeling that occurred in the eastern and western facades.

Excavations at Tumshukayko B revealed the presence of at least one artificial platform like those found in the monumental area of Tumshukayko A. This allowed us to determine that this mound could have had a phase contemporary with the Initial Formative period phase at Tumshukayko A.

With the data available as of now, we can imagine that at the time of its construction, Tumshukayko was a large complex consisting of a main eastward-facing mound made of superimposed platforms. It was probably surrounded by several smaller mounds.

Our studies allowed us to deepen the knowledge of this monumental complex and highlighted the most important issues that we must investigate in the future.

Acknowledgments. Thanks to the Asociación Vecinos de Tumshukayko, Asociación Caraz Cultura, and Dr. Claudia Fredella. The fieldwork was conducted with permits from the Ministerio de Cultura del Perú (Resolución Directoral no. 250-2021 and no. 205-2022).

Funding Statement. Funding was provided by the Ministero degli Affari Esteri e della Cooperazione Internazionale, the Museo delle Culture of Milan, and the Università IULM di Milan. The Caraz Municipality financed the salary of the excavation assistants.

Data Availability Statement. Georeferenced orthophotos of the sites are stored at the Università di Modena e Reggio Emilia in Modena, Italy.

Competing Interests. The authors declare none.

References Cited

- Bonnier, Elisabeth. 1997. Preceramic Architecture in the Andes: The Mito Tradition. In *Archaeológica Peruana 2*, edited by Elisabeth Bonnier and Henning Bischof, pp. 120–144. Sociedad Arqueológica Peruano-Alemana, Reiss Museum, Mannheim, Germany.
- Bria, Rebecca. 2017. Ritual, Economy, and the Construction of Community at Ancient Hualcayán (Ancash, Peru). PhD dissertation, Department of Anthropology, Vanderbilt University, Nashville, Tennessee.
- Bueno, Alberto. 2003. Tumshukaiko: Avances y propuestas arqueológicas. *Boletín del Museo de Arqueología y Antropología* 1:19–26.
- Bueno, Alberto. 2005. Investigaciones arqueológicas en Tumshukayko (Caraz, Ancash). *Investigaciones Sociales* 9(15):43–76.
- Burger, Richard, and Robert Rosenswig. 2012. *Early New World Monumentality*. University Press of Florida, Gainesville.
- Burger, Richard, and Lucy Salazar-Burger. 1985. The Early Ceremonial Center of Huaricoto. In *Early Ceremonial Architecture in the Andes: A Conference at Dumbarton Oaks*, edited by Christopher B. Donnan, pp. 111–138. Dumbarton Oaks, Washington, DC.
- Isbell, William, and Helaine Silverman. 2002. Early Andean Civilizations: Introduction. In *Andean Archaeology I: Variations in Sociopolitical Organization*, edited by William Isbell and Helaine Silverman, pp. 15–20. Kluwer Academic, New York.
- Jolie, Edward A., Thomas F. Lynch, Phil R. Geib, and James M. Adovasio. 2011. Cordage, Textiles, and the Late Pleistocene Peopling of the Andes. *Current Anthropology* 52:285–296.
- Lynch, Thomas. 1980. *Guitarrero Cave: Early Man in the Andes*. Studies in Archaeology 39. Academic Press, New York.
- Munro, Kimberly. 2018. Landscapes of Persistence and Ritual Architecture at the Cosma Complex, Upper Nepeña Valley, Peru. PhD dissertation, Department of Geography and Anthropology, Louisiana State University, Baton Rouge.
- Querevalú, José. 2014. Análisis comparativo de la arquitectura temprana de los sitios de Tumshukayko y Chupacoto, distritos de Caraz y Huaylas, Provincia de Huaylas. Bachelor's thesis, Faculty of Social Sciences of the Universidad Nacional Mayor de San Marcos, Lima.
- Quiñones, J. Cruz. 2016. *Informe final de proyecto de investigación arqueológica, asentamientos arcaicos en el sur de Ancash: Temporada 2015*. Ministerio de Cultura del Perú, Lima.
- Reindel, Markus, and Gorbahn Hermann. 2018. The Rise of Monumentality and Complex Societies in the Central Andes, Peru. In *Proceedings of Surplus without the State: Political Forms in Prehistory*, edited by Harald Meller, Gronenborn Detlef, and Roberto Risch, pp. 449–466. Landesmuseum für Vorgeschichte Halle, Halle, Germany.
- Valladolid, Clide. 1990. *Tunshucaico: Informe de trabajo realizado en el año de 1990*. Informe Presentado al Museo Arqueológico de Caraz, Ancash.