

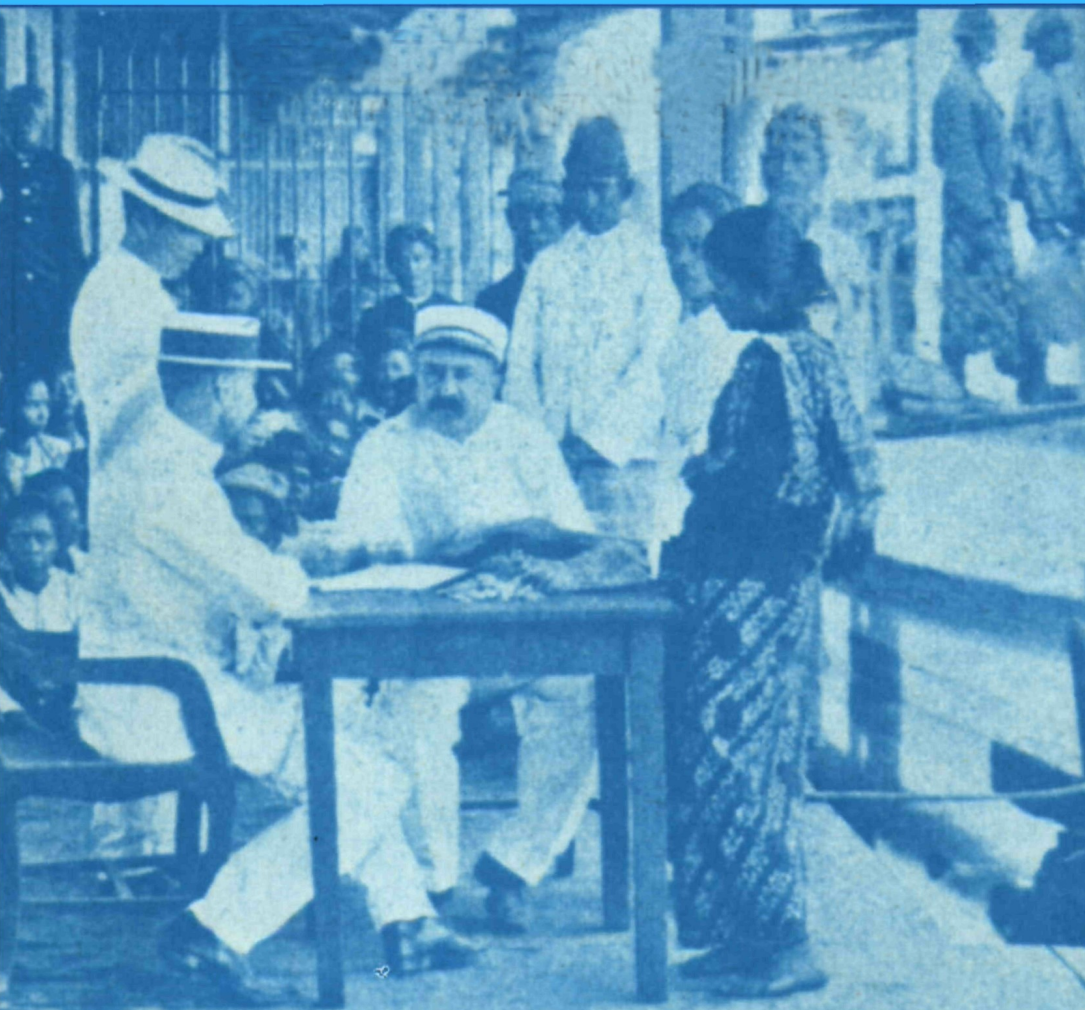
# ITINERARIO

1

2002

VOLUME XXVI

European Journal  
of Overseas History



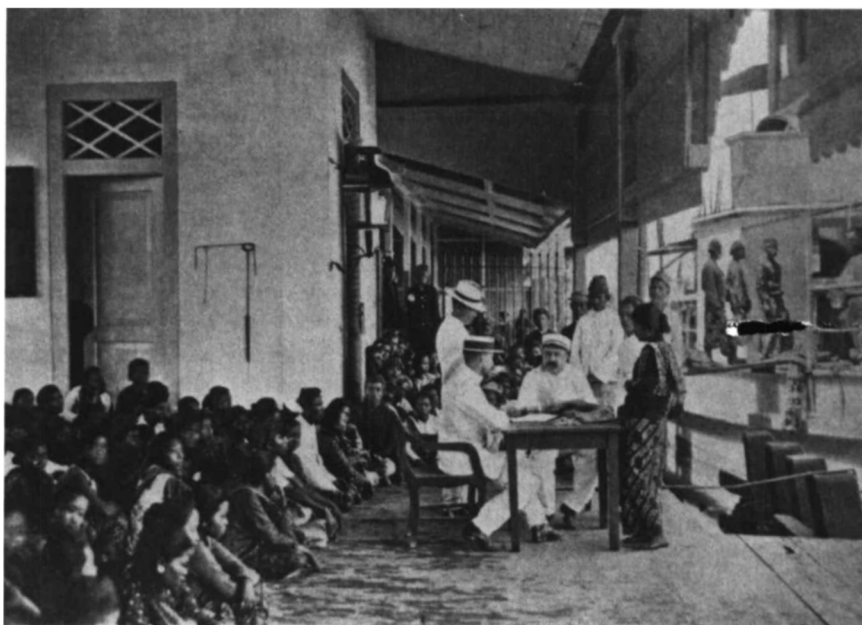
ITINERARIO volume XXVI, (2002) number 1

*Cover photo:*

Pass control of Javanese emigrants to Deli, 1909. Source: *Eigen Haard* 51 (1909) 815 (Courtesy of KITLV).

# ITINERARIO

ITINERARIO volume XXVI (2002) number 1



LEIDEN  
GRAFARIA  
2002

*Editors:* Wim van den Doel, Hendrik E. Niemeijer, Peer Vries

*Editorial Assistant:* Jesca Zweijtzter

*Book Review Editor:* Markus Vink

*Webmaster:* Inlgwan Taga

*Assistants:* Rosemary Robson, Marné Strydom

*Editorial Board:*

- Michael Adas, *Rutgers University*
- Leonard Blussé, *Leiden University*
- Kirti N. Chaudhuri, *European University Institute (Fiesole, Italy)*
- Patricia Seed, *Rice University*
- H.L. Wesseling, *Netherlands Institute for Advanced Study (NIAS)*

*Itinerario* (ISSN 0165-1153) is a fully refereed journal published quarterly by the Institute for the History of European Expansion of Leiden University. The Institute is affiliated with the Research School CNWS, School for Asian, African and Amerindian Studies, and with the university's Department of History. *Itinerario* is also the official journal of the *Forum on European Expansion and Global Interactions* (FEEGI) in the USA.

Subscription fees 2001: € 42 or US\$ 54.00 (individual) and € 56 or US\$ 79.00 (institutional). FEEGI-members who pay for *Itinerario* directly to the John Carter Brown Library will be charged US\$ 44.00. Single issue price: € 16 or US\$ 17.50. All amounts include VAT. VAT Registration Number NL 001935549B01.

Subscriptions to: *Itinerario*, History Department, Leiden University, PO Box 9515, 2300 RA Leiden, the Netherlands. [Itinerario@let.leidenuniv.nl](mailto:Itinerario@let.leidenuniv.nl);  
Fax +31.71.527-2652; Tel: +31.71.527-2767.

*Itinerario* welcomes submissions dealing with comparative dimensions of European expansion and global interaction. North-American authors are invited to send their contribution directly to: • Patricia Seed (Rice University, History Department - MS42, 6100 Main Street, Houston, TX 77005-1892) or: • Michael Adas (Rutgers University, Department of History, 16 Seminary Place, New Brunswick, NJ 08901-1108).

All correspondence should be addressed to: The Editors, *Itinerario*, History Department, Leiden University, PO Box 9515, 2300 RA Leiden, the Netherlands.  
Fax +31.71.527-2652.

For subscription requests, submissions, any questions/reactions et cetera:  
[itinerario@let.leidenuniv.nl](mailto:itinerario@let.leidenuniv.nl)

For more information and for the contents of earlier issues:  
<http://www.itinerario.nl>

Subscribers in the USA, Mexico and Canada may send cheques to: *Itinerario* c/o John Carter Brown Library, Box 1894, Providence, Rhode Island 02912, USA.  
All other subscribers: *Itinerario*, History Department, Leiden University, PO Box 9515, 2300 RA Leiden, the Netherlands.

In case of payment by Mastercard/VISAcad no bank charges are due.

# Contents

<b>Letter from the Editors</b>	7
<b>Articles</b>	
<i>Chris Bierwirth</i> , French Interests in the Levant and Their Impact on French Immigrant Policy in West Africa	9
<i>R.J. Barendse</i> , History, Law and Orientalism under Portuguese Colonialism in Eighteenth-Century India	33
<i>Ruby Maloni</i> , Surat to Bombay: Transfer of Commercial Power	61
<i>Eric Tagliacozzo</i> , Trade, Production, and Incorporation. The Indian Ocean in Flux, 1600-1900	75
<i>Rafael Ruiz</i> , The Spanish-Dutch War and the Policy of the Spanish Crown toward the Town of Sao Paulo	107
<i>James I. Lewis</i> , Félix Eboué and Late French Colonial Ideology	127
<b>Reviews</b>	
Donald C. Simmons, Jr, <i>Confederate Settlements in British Honduras</i> (Robert Linville Hoover)	161
Manuel Herrero Sánchez, <i>El acercamiento hispano-neerlandés (1648-1678)</i> (Wim Klooster)	162
Peter Boomgaard & Ian Brown eds, <i>Weathering the Storm: The Economies of Southeast Asia in the 1930s Depression</i> (Michael W. Charney)	164
H.W. van Santen, <i>VOC-dienaar in India: Geleynssen de Jongh in het land van de Groot-Mogol</i> (Markus Vink)	167
Han Knapen, <i>Forests of Fortune? The Environmental History of Southeast Borneo, 1600-1800</i> (Tycho de Boer)	169
P.J. Cain and A.G. Hopkins, <i>British Imperialism, 1688-2000</i> (Ty M. Reese)	171
Pierre Brocheux and Daniel Hémery, <i>Indochine, la colonisation ambiguë 1858-1954</i> (Daniel M. Ringrose)	173

Norman Etherington, <i>The Great Treks: The Transformation of Southern Africa, 1815-1854</i> (Clifton Crais)	175
Brian Stanley ed., <i>Christian Missions and the Enlightenment</i> (Dee E. Andrews)	177
Rudolph P. Mathee, <i>The Politics of Trade in Safavid Iran: Silk for Silver 1600-1730</i> (Ghulam Nadri)	180
<b>About our Authors</b>	182