

## Original Research

**Cite this article:** Yagoda S, Graham C, Simmons A, Arevalo C, Jiang Y, and McDonnell D (2021). Long-term safety and durability of effect with a combination of olanzapine and samidorphan in patients with schizophrenia: results from a 1-year open-label extension study. *CNS Spectrums* 26(4), 383–392. <https://doi.org/10.1017/S1092852920001376>

Received: 15 January 2020

Accepted: 19 April 2020

**Key words:**

Antipsychotic agents; olanzapine; narcotic antagonists; schizophrenia; safety

**Author for correspondence:**

\*David McDonnell,

Email: [david.mcdonnell@alkermes.com](mailto:david.mcdonnell@alkermes.com)

# Long-term safety and durability of effect with a combination of olanzapine and samidorphan in patients with schizophrenia: results from a 1-year open-label extension study

Sergey Yagoda<sup>1</sup>, Christine Graham<sup>1</sup>, Adam Simmons<sup>1</sup>, Christina Arevalo<sup>1</sup>, Ying Jiang<sup>1</sup> and David McDonnell<sup>2\*</sup>

<sup>1</sup>Alkermes, Inc., Waltham, Massachusetts, USA, and <sup>2</sup>Alkermes Pharma Ireland Limited, Dublin, Ireland

**Abstract**

**Background.** Combination olanzapine and samidorphan (OLZ/SAM), in development for schizophrenia and bipolar I disorder, is intended to provide the efficacy of olanzapine while mitigating olanzapine-associated weight gain. OLZ/SAM safety, tolerability, and efficacy from a 52-week open-label extension study in patients with schizophrenia are reported.

**Methods.** Patients previously completing the 4-week, double-blind ENLIGHTEN-1 study switched from OLZ/SAM, olanzapine, or placebo to OLZ/SAM. Assessments included adverse events (AEs), weight, vital signs, Positive and Negative Syndrome Scale (PANSS), and Clinical Global Impression-Severity (CGI-S) scores. Baseline was prior to first dose of OLZ/SAM in the extension study.

**Results.** In total, 281 patients enrolled, 277 received  $\geq 1$  OLZ/SAM dose, and 183 (66.1%) completed 52 weeks. Reasons for discontinuation included patient withdrawal (15.5%), loss to follow-up (6.9%), AEs (5.8%), and lack of efficacy (1.8%). AEs were reported in 136 (49.1%) patients; increased weight (13%) and somnolence (8%) were most common. Ten serious AEs were reported in eight patients (2.9%); none were considered treatment related. There were no deaths. Mean (SD) baseline weight was 79.1 (17.8) kg. Mean weight change from baseline to week 52 was 1.86 kg (2.79% increase). PANSS total and CGI-S scores continued to decline over 52 weeks (mean [95% CI] changes from baseline to week 52:  $-16.2$  [ $-18.5, -14.0$ ] and  $-0.9$  [ $-1.0, -0.8$ ], respectively).

**Conclusion.** OLZ/SAM was generally well tolerated in this extension study; most patients completed the 52-week treatment period with sustained improvement in schizophrenia symptoms. Mean increases in weight stabilized by week 6 with limited subsequent change through end of treatment.

**Introduction**

Schizophrenia is a chronic mental illness with a significant impact on patients' lives. It is associated with substantial psychosocial disability, high rates of comorbid psychiatric conditions, a greater need for mental healthcare services, and high risk of suicide.<sup>1,2</sup> Patients with schizophrenia are also at an elevated risk of cardiovascular disease and type 2 diabetes.<sup>3,4</sup> Current treatment guidelines recommend antipsychotic medication as first-line treatment for a patient experiencing an acute exacerbation of symptoms.<sup>5,6</sup> Once stabilization has been achieved, continuous lifelong antipsychotic therapy is recommended to maintain symptom relief and reduce the risk of future relapse.<sup>5,6</sup> Given the complexity and heterogeneity of schizophrenia, there is no single treatment that will work for every patient over the entire course of illness. Patients and clinicians need more treatment options to effectively manage symptoms while limiting side effects.

A combination of the antipsychotic olanzapine and the opioid receptor antagonist samidorphan (OLZ/SAM) is in development for the treatment of schizophrenia and bipolar I disorder. Among the existing antipsychotics, olanzapine is known to be effective in the treatment of schizophrenia, with efficacy in short-term stabilization of acute episodes as well as long-term maintenance therapy.<sup>7,8</sup> In studies comparing the long-term effectiveness of several antipsychotic medications, treatment with olanzapine resulted in lower rates of hospitalization for disease exacerbation<sup>8,9</sup> and higher rates of remission.<sup>10,11</sup> Time to all-cause discontinuation was also consistently longer for olanzapine compared with other antipsychotics across multiple studies.<sup>7–9,12,13</sup> Despite its established efficacy, olanzapine is associated with a risk of significant weight gain,<sup>8,14,15</sup> which has limited its overall clinical utility.<sup>16,17</sup> OLZ/SAM is intended to preserve the antipsychotic efficacy of olanzapine while mitigating olanzapine-associated weight gain.

© The Author(s), 2020. Published by Cambridge University Press. This is an Open Access article, distributed under the terms of the Creative Commons Attribution licence (<http://creativecommons.org/licenses/by/4.0/>), which permits unrestricted re-use, distribution, and reproduction in any medium, provided the original work is properly cited.

The antipsychotic efficacy of OLZ/SAM and its effect in mitigating olanzapine-associated weight gain has been reported previously in two phase 3 trials of 4-week<sup>18</sup> and 24-week<sup>19</sup> durations, respectively. In the 24-week study that evaluated weight gain with OLZ/SAM compared with olanzapine, body weight stabilized after the first 6 weeks of OLZ/SAM treatment, whereas continued weight gain was observed with olanzapine.<sup>19</sup> Given that schizophrenia is a chronic disorder requiring lifelong treatment, it is imperative to evaluate the long-term safety and tolerability of OLZ/SAM as well as its continued effectiveness in managing schizophrenia symptoms. The study described here was a 52-week open-label extension study in patients with schizophrenia who completed the 4-week acute efficacy study.<sup>18</sup> The objective was to assess the long-term safety and tolerability of OLZ/SAM in adults with schizophrenia. The durability of antipsychotic and weight mitigation effects over 1 year were also assessed.

## Methods

Patients eligible for enrollment in this phase 3, multicenter, open-label extension study were the 352/401 (87.8%) who had completed ENLIGHTEN-1 (ClinicalTrials.gov identifier: NCT02634346), a 4-week, double-blind lead-in study assessing OLZ/SAM, olanzapine, or placebo for the treatment of adults with an acute exacerbation of schizophrenia.<sup>18</sup> The extension study (ClinicalTrials.gov identifier: NCT02669758) was conducted between January 2016 and June 2018 at 37 sites (14 in the United States, 9 in Bulgaria, 6 in Serbia, and 8 in Ukraine) according to International Council for Harmonization Good Clinical Practice guidelines. The institutional review board or independent ethics committee at each investigational site approved the study protocol and amendments. All patients provided written informed consent.

## Study design and treatment

The first visit of this study occurred within 7 days of (and including the same day as) the last visit of the lead-in study.<sup>18</sup> In order to maintain the blind in the lead-in study, all patients were started on once-daily OLZ/SAM 10/10 mg (10 mg olanzapine/10 mg samidorphan) (Figure 1). For the remainder of the study, dosing of OLZ/SAM was flexible based on patient need and investigator discretion at doses of 10/10, 15/10, or 20/10 mg. Frequent dose changes were discouraged. Study participants either continued as

inpatients for up to 1 week or had already been discharged from the hospital prior to study start.

Study visits occurred weekly for the first 2 weeks, then every other week thereafter to week 52 of the treatment period. Patients completing the 52-week study were eligible to enter a long-term, open-label follow-up safety study of 4 years in duration (ClinicalTrials.gov identifier: NCT03201757). Patients who opted not to continue in the 4-year safety study entered a 4-week safety follow-up period.

## Study participants

Eligible participants were adults with schizophrenia, 18 to 70 years of age, who completed the 4-week treatment period of ENLIGHTEN-1.<sup>18</sup> Key exclusion criteria included any finding that would compromise the safety of the patient or affect his or her ability to meet the visit schedule or visit requirements (based on the opinion of the investigator), use of medications contraindicated with olanzapine or that had drug-interaction potential with olanzapine, use of prohibited drugs, and women who were pregnant or nursing.

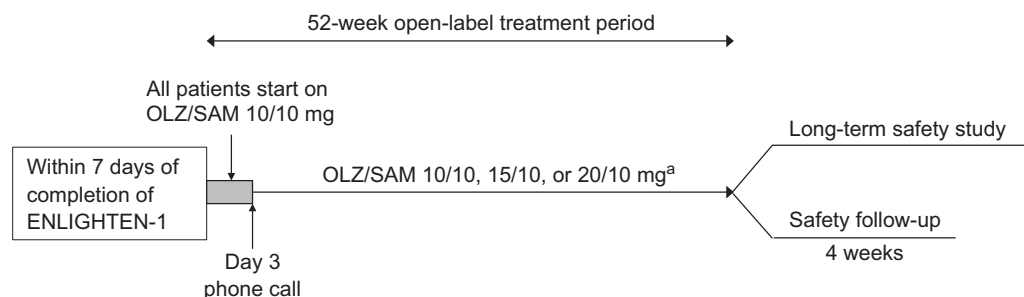
## Assessments

Safety was evaluated using the following assessments: adverse event (AE) monitoring, clinical laboratory testing, vital signs, weight measurement, 12-lead electrocardiograms (ECGs), scores on movement disorder rating scales (Abnormal Involuntary Movement Scale [AIMS],<sup>20</sup> Barnes Akathisia Rating Scale [BARS],<sup>21</sup> and Simpson-Angus Scale [SAS]<sup>22</sup>), and the Columbia-Suicide Severity Rating Scale (C-SSRS)<sup>23</sup> to evaluate for the presence of suicidal ideation or behavior. Patients were asked to fast for  $\geq 8$  hours prior to the study visits in which blood samples were drawn for laboratory testing, including fasting glucose, cholesterol, and triglycerides. Fasting status was based on self-report, without independent confirmation.

The durability of treatment effect was evaluated by Positive and Negative Syndrome Scale (PANSS)<sup>24</sup> and Clinical Global Impression-Severity (CGI-S)<sup>25</sup> scores. The proportion of patients having a response, remission, or relapse was also assessed.

## Statistical analyses

Safety was assessed in all patients who received  $\geq 1$  dose of study drug. Efficacy was assessed in all patients who received  $\geq 1$  dose of study drug and had  $\geq 1$  postbaseline PANSS measurement. All



**Figure 1.** Study design schematic. Patients entering this study started treatment with combination of olanzapine and samidorphan (OLZ/SAM) 10/10 mg within 7 days of completing the prior 4-week, double-blind acute efficacy study.<sup>18</sup> Patients were contacted by phone on day 3 to determine if a dose increase was needed, and, if so, an unscheduled visit was arranged mid-week 1. The olanzapine dose in OLZ/SAM could be adjusted throughout the study period, based on tolerability and investigator discretion. Prespecified visits occurred weekly for the first 2 weeks, then biweekly thereafter. After the 52-week treatment period, patients were monitored for an additional 4 weeks in a safety follow-up period or could continue receiving OLZ/SAM treatment in a long-term, open-label, follow-up safety study (ClinicalTrials.gov identifier: NCT03201757). <sup>a</sup>The dose of olanzapine in OLZ/SAM could be adjusted to either 10, 15, or 20 mg throughout the study period, based on investigator discretion; the dose of samidorphan in OLZ/SAM is fixed at 10 mg.

efficacy and safety results were summarized descriptively based on observed data without imputation. In addition, change from baseline in PANSS total score was also summarized using last observation carried forward for missing data. Baseline for efficacy or safety analyses was defined as the last nonmissing assessment before the first dose of OLZ/SAM in this open-label extension study, and it was used for all efficacy and safety analyses, unless specified otherwise.

Response was defined as  $\geq 30\%$  improvement (decrease) from baseline in PANSS total score. Relapse was defined as  $\geq 30\%$  worsening (increase) in PANSS total score or rehospitalization for psychotic symptoms after the patient achieved stabilization. Stabilization was defined as meeting all of the following criteria: PANSS total score  $\leq 80$ , and PANSS score  $\leq 4$  on P2 (conceptual disorganization), P3 (hallucinatory behavior), P6 (suspiciousness), and G9 (unusual thought content). Because PANSS item scores range from 1 = absent to 7 = extreme and a minimum score of 30 for PANSS total score represents no symptoms, responder and relapse analyses used corrected PANSS baseline scores (by subtracting 30).<sup>24,26</sup> Remission was defined as a PANSS item score  $\leq 3$  (mild or less) for each of 8 items in 2 consecutive efficacy assessments after the patient achieved stabilization (P1 [delusions], G9 [unusual thought content], P3 [hallucinatory behavior], P2 [conceptual disorganization], G5 [mannerisms/posturing], N1 [blunted affect], N4 [social withdrawal], and N6 [lack of spontaneity]). The time to treatment discontinuation was estimated using the Kaplan–Meier method.<sup>27</sup> For patients who prematurely discontinued, the time to event was defined as time from the first to last dose of OLZ/SAM. All other patients were censored at the date of the last OLZ/SAM dose.<sup>28</sup>

**Results**

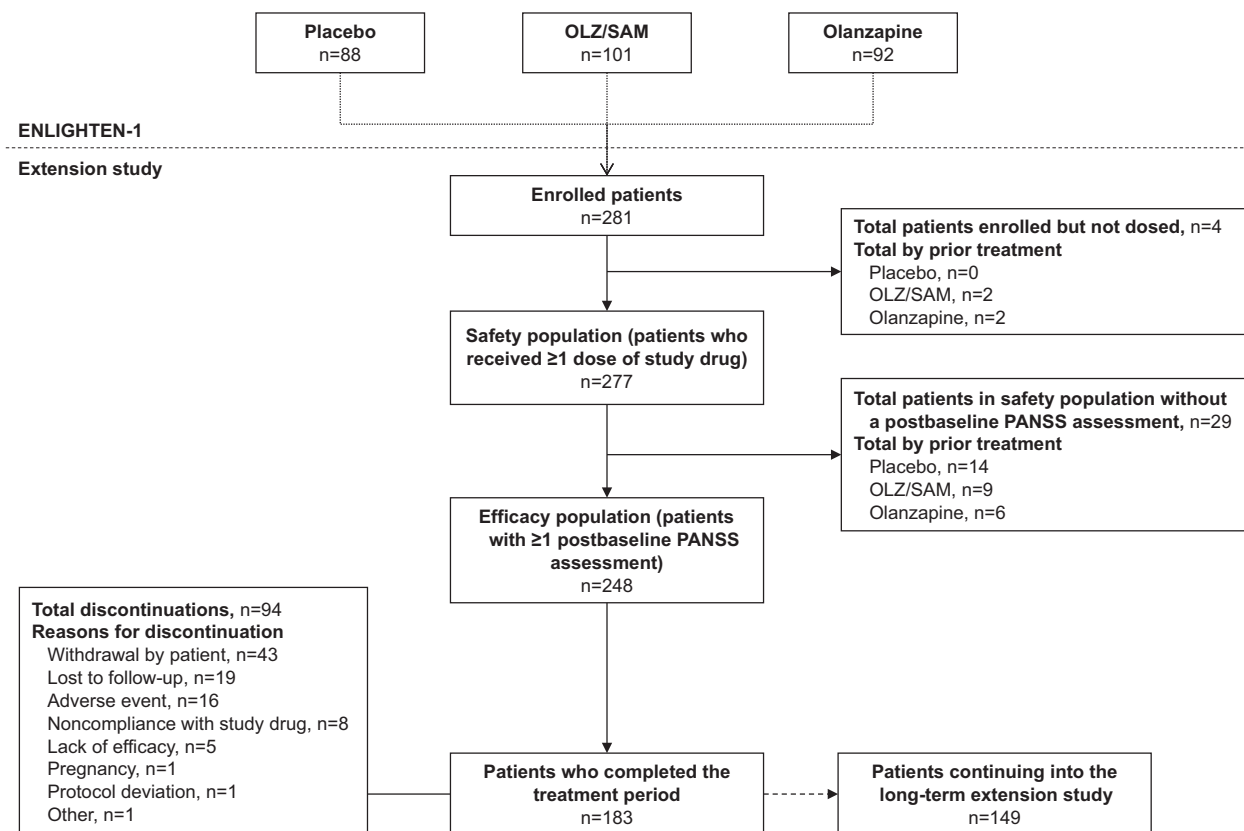
A total of 281 patients were enrolled in this study. Of these, 277 received  $\geq 1$  dose of study drug and 248 had  $\geq 1$  postbaseline PANSS assessment. Overall, 183/277 patients (66.1%) completed the 52-week treatment period; reasons for discontinuation are listed in Figure 2. A total of 149 patients who completed the study (81.4% [149/183]) enrolled in the 4-year follow-up safety study.

Demographic and baseline characteristics for all patients are presented in Table 1. The majority of patients were male (58.1%), white (78.7%), and from non-U.S. sites (72.9%). The average age of patients was 41.4 years and average weight was 79.1 kg. The majority of patients were overweight (26.7%; body mass index [BMI]  $\geq 25$  and  $< 30 \text{ kg/m}^2$ ) or obese (29.2%; BMI  $\geq 30 \text{ kg/m}^2$ ). Mean (SD) baseline PANSS total and CGI-S scores were 78.9 (16.5) and 3.9 (1.0), respectively.

In this study, the mean dose of olanzapine in OLZ/SAM was 15.45 mg/day. The majority of patients received a modal dose of 20/10 mg or 10/10 mg (58.1% and 41.2%, respectively). The 15/10 mg OLZ/SAM dose option was introduced  $\approx 15$  months after study initiation, resulting in few patients receiving this dose.

**Safety**

AEs were reported in 136 (49.1%) patients; increased weight and somnolence were most commonly reported (Table 2). Most AEs were mild or moderate in severity; seven patients (2.5%) experienced a severe AE. There were 10 serious adverse events (SAEs) reported in 8 (2.9%) patients (Table 2). A total of five patients (1.8%) experienced SAEs of worsening/exacerbation of



**Figure 2.** Patient disposition. OLZ/SAM, combination of olanzapine and samidorphan; PANSS, Positive and Negative Syndrome Scale.

**Table 1.** Baseline Demographics and Disease Characteristics

	All Patients (N = 277)
Age, mean (SD), y	41.4 (11.3)
Men, n (%)	161 (58.1)
Race, n (%)	
White	218 (78.7)
Black or African American	52 (18.8)
Asian	2 (0.7)
American Indian or Alaska Native	1 (0.4)
Other	4 (1.4)
Weight, mean (SD), kg	79.1 (17.8)
BMI, n (%)	
Overweight (BMI $\geq$ 25 to $<$ 30 kg/m <sup>2</sup> )	74 (26.7)
Obese (BMI $\geq$ 30 kg/m <sup>2</sup> )	81 (29.2)
Region, n (%)	
United States	75 (27.1)
Non-United States	202 (72.9)
Bulgaria	100 (36.1)
Ukraine	69 (24.9)
Serbia	33 (11.9)
PANSS total score, mean (SD) <sup>a</sup>	78.9 (16.5)
CGI-S score, mean (SD) <sup>a</sup>	3.9 (1.0)

Abbreviations: BMI, body mass index; CGI-S, Clinical Global Impression-Severity; PANSS, Positive and Negative Syndrome Scale; SD, standard deviation.

<sup>a</sup>Assessed in patients who received at least one dose of study drug and had at least one postbaseline PANSS assessment (n = 248).

schizophrenia. Two patients each had two serious AEs (intentional overdose and suicide attempt; fibula fracture and tibia fracture); a single patient reported an SAE of viral gastroenteritis. There were 15 (5.4%) patients who discontinued due to an AE. The only AE leading to discontinuation that occurred in more than 1 patient was worsening/exacerbation of schizophrenia (n = 6, 2.2%). One pregnancy was reported; the patient elected to terminate the pregnancy and was discontinued. There were no deaths in this study.

### Body weight

The mean (SD) weight change from baseline to week 24 (n = 208) was 1.59 kg (4.87), and to week 52 (n = 183) was 1.86 (6.69) kg, based on observed cases (Figure 3). Mean (SD) weight gain of the last on-treatment weight assessment (n = 272) was 1.26 (6.33) kg. The proportion of patients with clinically meaningful weight gain ( $\geq$ 7%) at any time during the study was 27.6% (75/272). The proportion of patients with weight loss of  $\geq$ 7% was 11.8% (32/272). Patients who received OLZ/SAM or olanzapine in the lead-in study (ENLIGHTEN-1) had higher baseline body weight (mean [SD] baseline body weight by prior treatment: OLZ/SAM, 79.88 [16.38] kg; olanzapine, 81.79 [20.70] kg; and placebo, 75.39 [15.43] kg) and experienced less weight gain over time than patients who had previously received placebo (Figure 4A). Accordingly, a greater proportion of patients previously treated with placebo gained  $\geq$ 7% body weight in this study (Figure 4B).

**Table 2.** Adverse Events Summary During the Treatment Period

Patients, n (%)	All Patients (N = 277)
Any AEs	136 (49.1)
Serious AEs <sup>a</sup>	8 (2.9)
AE leading to treatment discontinuation <sup>b</sup>	15 (5.4)
AEs reported in $\geq$ 2% of patients	
Increased weight	37 (13.4)
Somnolence	23 (8.3)
Headache	11 (4.0)
Nasopharyngitis	11 (4.0)
Extra dose administered	9 (3.2)
Schizophrenia	9 (3.2)
Anxiety	7 (2.5)
Dry mouth	7 (2.5)
Social stay hospitalization	7 (2.5)
Decreased weight	6 (2.2)
Increased blood prolactin	6 (2.2)
Increased blood insulin	6 (2.2)
Insomnia	6 (2.2)

Abbreviation: AE, adverse event.

<sup>a</sup>Two patients each reported two serious AEs (intentional overdose and suicide attempt; fibula fracture and tibia fracture); the other serious AEs reported were worsening/exacerbation of schizophrenia (n = 5) and gastroenteritis viral (n = 1).

<sup>b</sup>The AEs leading to discontinuation were exacerbation of schizophrenia (n = 4), worsening of schizophrenia (n = 2), and n = 1 each for the following: neutropenia, gastroenteritis viral, intentional overdose, increased blood insulin, increased glycosylated hemoglobin (HbA1c), decreased neutrophil count, diabetes mellitus, dizziness, psychotic disorder, and suicide attempt.

### Lipid and glycemic parameters

Lipid parameters remained stable over the 52-week treatment period (Table 3). Changes were generally small and tended to occur within the first 24 weeks. Mean (SD) fasting glucose increased by 6.0 (14.4) mg/dL from baseline at week 52, whereas fasting insulin (mean [SD] change from baseline,  $-1.7$  [14.8]  $\mu$ IU/mL) and glycosylated hemoglobin (HbA1c;  $-0.07$  [0.33]%) remained stable over 52 weeks.

Shifts from normal to high values for total cholesterol, LDL cholesterol, and triglycerides occurred in 8.9%, 5.5%, and 15.9% of patients, respectively. Shifts from normal to low HDL cholesterol occurred in 26.6% of patients. Shifts from normal to high values in fasting glucose occurred in 7.6% of patients (see Supplementary Table S1). Overall, 3 patients had glucose-related events that led to treatment discontinuation (n = 1 each for diabetes mellitus, increased HbA1c, and increased blood insulin).

### Clinical laboratory parameters and other safety measures

Mean changes in hematology parameters from baseline to the last observed visit were generally small and considered not clinically meaningful. Two patients discontinued treatment due to non-serious AEs; one with a decreased neutrophil count and one with neutropenia. Mean changes in liver function measures were not clinically meaningful. Of three patients with any instances of abnormal liver function values, changes were transient and none met Hy's Law criteria<sup>29</sup> or led to a discontinuation of treatment.

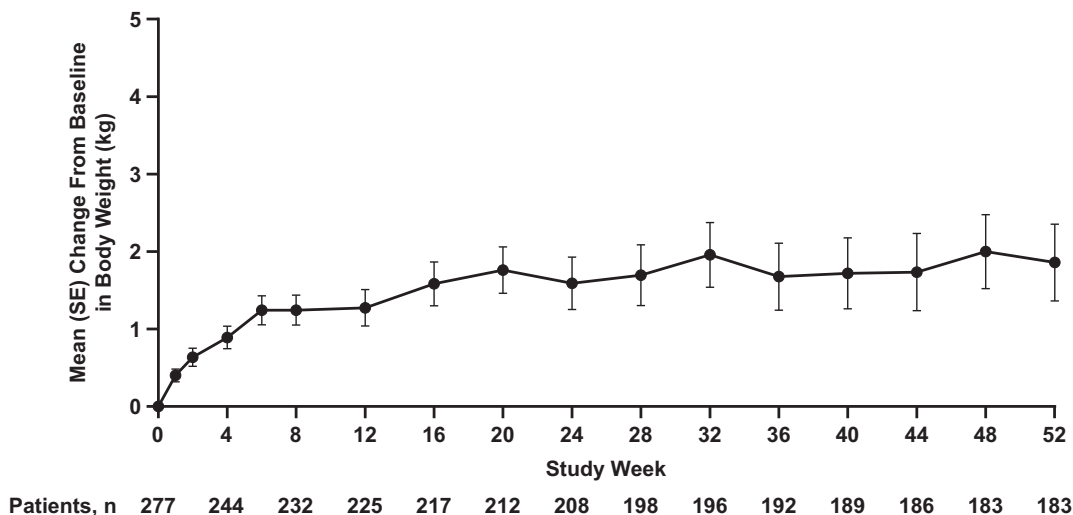


Figure 3. Mean (standard error, SE) body weight changes from baseline.

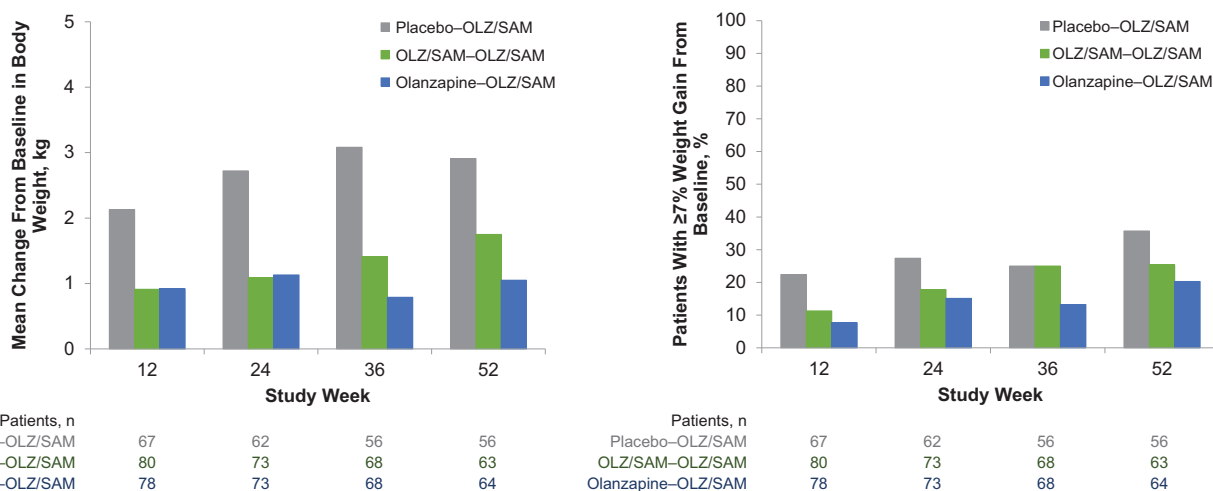


Figure 4. Body weight changes by visit according to lead-in study treatment (treatment received during ENLIGHTEN-1 followed by combination of olanzapine and samidorphan [OLZ/SAM] in this study). (A) Mean change from baseline in body weight. (B) Proportion of patients with  $\geq 7\%$  weight gain from baseline.

The mean (SD) change in prolactin from baseline to week 52 was 1.63 (24.65) ng/mL in women (n=89) and -3.10 (8.70) ng/mL in men (n=93). Among patients with normal prolactin levels at baseline and  $\geq 1$  postbaseline assessment, 29/84 women (34.5%) and 20/110 men (18.2%) had a prolactin plasma level that exceeded the normal reference range of  $>30$  ng/mL for women and  $>20$  ng/mL for men on at least one occasion during the study. AEs of increased prolactin were reported by six patients (all women). Gynecomastia and amenorrhea were reported as an AE in one patient each; an AE of decreased libido was reported by two patients.

No clinically meaningful mean changes were observed for vital signs or ECG findings. An abnormal postbaseline QT interval value corrected with Fridericia's formula (QTcF) of  $>500$  msec was recorded in 1 patient (week 36; QTcF, 564 msec); this event resolved, and the patient completed the study.

Mean (SD) changes from baseline to week 52 (n=183) in movement scale scores were 0.0 (0.81) for AIMS total, 0.0 (0.42) for BARS global, and 0.1 (1.08) for SAS. Treatment-emergent

parkinsonism (SAS total score  $>3$ ) occurred in 19 (6.9%) patients, dyskinesia (AIMS score  $\geq 3$  on any of the first seven items, or  $\geq 2$  on two or more of the first seven items) in 7 (2.5%) patients, and akathisia (BARS global score  $\geq 2$ ) in 13 (4.7%) patients. A total of seven (2.5%) patients experienced an AE related to extrapyramidal symptoms, but none resulted in treatment discontinuation.

There were no completed suicides in this study. Five (1.8% [5/277]) patients experienced suicidal ideation, including one (0.4%) patient who experienced suicidal behavior, as determined by the C-SSRS. Suicide-related AEs were reported by five patients, including three with suicidal ideation, one with attempted suicide (overdose of 12 tablets of OLZ/SAM 10/10 mg), and one with accidental overdose (the patient pushed two tablets out of the blister pack and decided to take both).

**Durability of treatment effect**

In this study, the rate of all-cause discontinuation was 33.9% (94/277), with five (1.8%) patients discontinuing due to lack of

**Table 3.** Mean Change From Baseline in Lipid and Glycemic Parameters by Visit

Parameter	Baseline	24 Weeks	52 Weeks
<b>Total cholesterol, fasting</b>			
N	276	200	180
Mean (SD), mg/dL	191.8 (36.1)	190.8 (38.1)	192.7 (38.8)
Change from baseline, mean (SD), mg/dL		1.7 (35.9)	3.4 (31.2)
<b>HDL cholesterol, fasting</b>			
N	276	200	180
Mean (SD), mg/dL	51.7 (14.6)	51.7 (14.7)	54.4 (15.3)
Change from baseline, mean (SD), mg/dL		−0.6 (10.9)	1.7 (12.9)
<b>LDL cholesterol, fasting</b>			
N	276	200	180
Mean (SD), mg/dL	120.4 (32.2)	120.0 (34.1)	124.1 (36.2)
Change from baseline, mean (SD), mg/dL		2.3 (32.1)	5.7 (28.8)
<b>Triglycerides, fasting</b>			
N	276	200	180
Mean (SD), mg/dL	141.7 (93.1)	141.3 (80.2)	143.7 (78.3)
Change from baseline, mean (SD), mg/dL		9.9 (71.3)	14.6 (70.1)
<b>Glucose, fasting</b>			
N	276	200	180
Mean (SD), mg/dL	94.3 (12.7)	99.0 (19.4)	99.3 (13.5)
Change from baseline, mean (SD), mg/dL		5.3 (14.8)	6.0 (14.4)
<b>Insulin, fasting</b>			
N	275	196	181
Mean (SD), $\mu$ U/mL	15.4 (18.0)	13.0 (15.6)	11.7 (12.5)
Change from baseline, mean (SD), $\mu$ U/mL		−1.2 (21.0)	−1.7 (14.8)
<b>HbA1c</b>			
N	276	205	181
Mean (SD), %	5.45 (0.36)	5.34 (0.45)	5.36 (0.32)
Change from baseline, mean (SD), %		−0.08 (0.42)	−0.07 (0.33)

Abbreviations: HbA1c, glycosylated hemoglobin; HDL, high-density lipoprotein; LDL, low-density lipoprotein; SD, standard deviation.

efficacy (Figure 5). PANSS total scores decreased over 52 weeks, with a mean (95% CI) decrease of  $-16.2$  ( $-18.5$  to  $-14.0$ ) (Supplementary Table S2). Similar improvements were observed with last-observation-carried-forward analysis for PANSS total score and subscale scores. CGI-S scores also improved over the treatment period, with a mean (95% CI) decrease of  $-0.9$  ( $-1.0$  to  $-0.8$ ). Patients who had previously received placebo in the lead-in study (ENLIGHTEN-1) had the highest baseline PANSS total and CGI-S scores (84.6 and 4.3, respectively) and had the greatest improvements ( $-21.1$  and  $-1.2$ , respectively; Figure 6 and Figure 7). Patients previously treated with OLZ/SAM or olanzapine in the lead-in study had similar baseline PANSS total scores (76.5 and 76.4, respectively) and CGI-S scores (both 3.7), and continued to experience decreases in PANSS and CGI-S scores over the 52 week study: mean changes in PANSS total and CGI-S scores were  $-15.6$  and  $-0.8$ , respectively, for those previously treated with OLZ/SAM and  $-12.7$  and  $-0.7$ , respectively, for those previously treated with olanzapine.

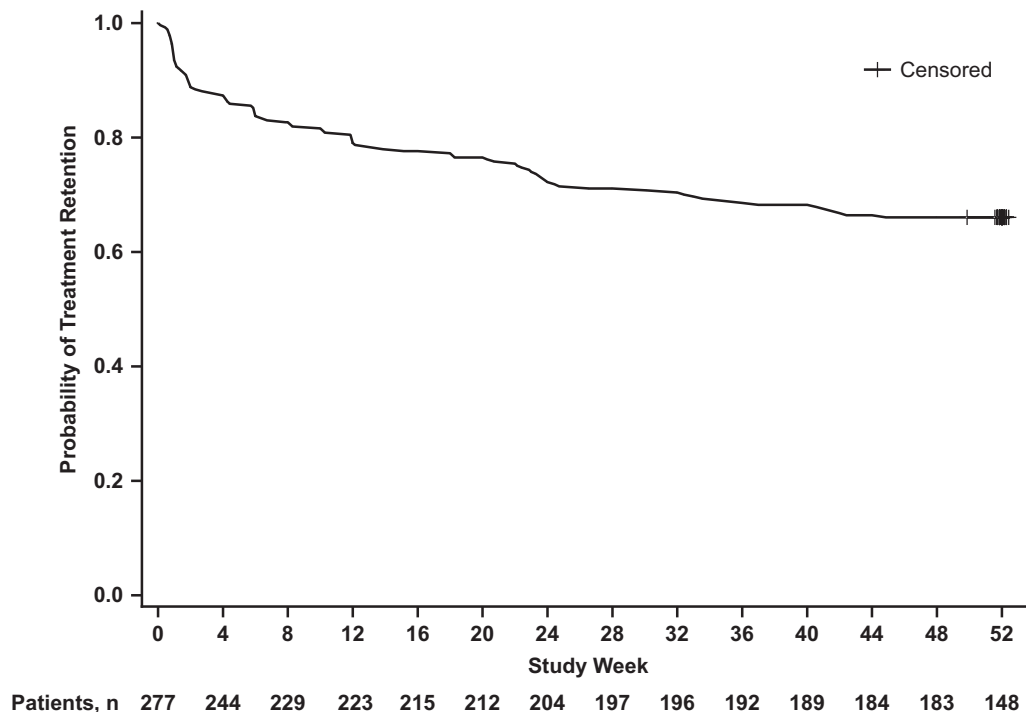
The proportion of patients meeting PANSS response criteria ( $\geq 30\%$  improvement) progressively increased throughout the study,

with 32.0% (72/225), 41.9% (88/210), and 51.9% (95/183) of patients meeting response criteria at weeks 12, 24, and 52, respectively. A total of 220 patients (88.7%) achieved stabilization. Of these 220 patients meeting stabilization criteria, 129 (58.6%) achieved remission, and 23 (10.5%) experienced a relapse during the 52-week treatment period.

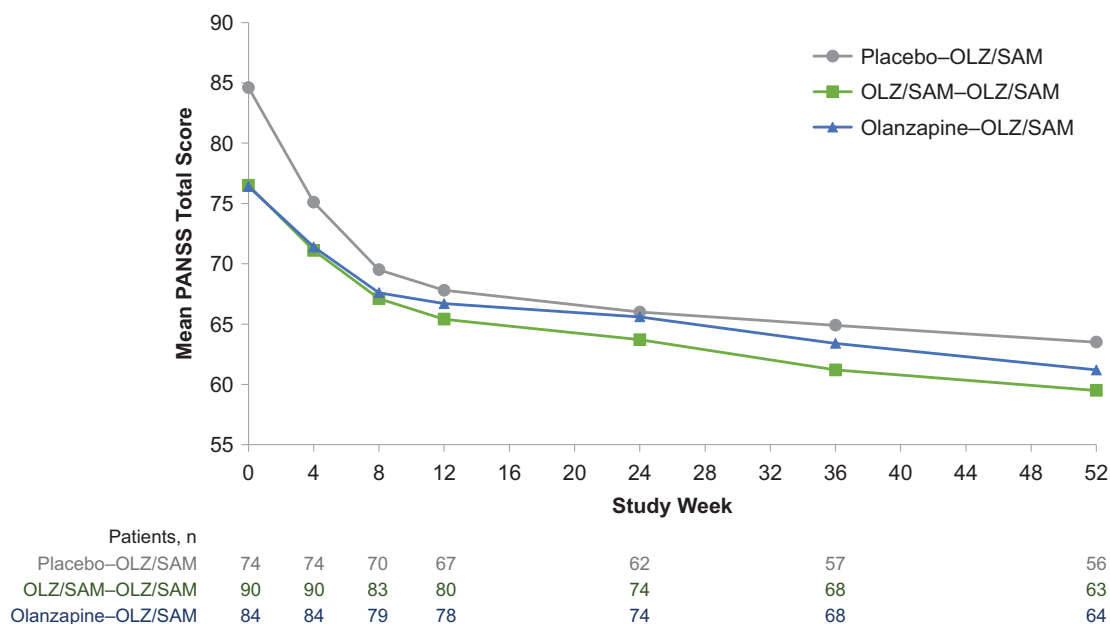
## Discussion

In this open-label study evaluating the safety, tolerability, and durability of effect with long-term OLZ/SAM treatment in patients with schizophrenia, OLZ/SAM was generally well tolerated over 52 weeks. A majority of patients (66.1%) completed the 52-week treatment period. Patients also had sustained improvements in symptoms of schizophrenia as measured by PANSS and CGI-S scores, with the majority of patients achieving stabilization (88.7%) and not relapsing (89.5%).

Increased weight and somnolence were among the most frequently reported AEs. The most common serious AE was worsening of schizophrenia (five patients), and this was also the most common AE leading to discontinuation, consistent with other long-term



**Figure 5.** Time to all-cause study discontinuation. Numbers at the bottom of the figure provide the number of patients at risk at each corresponding study week.

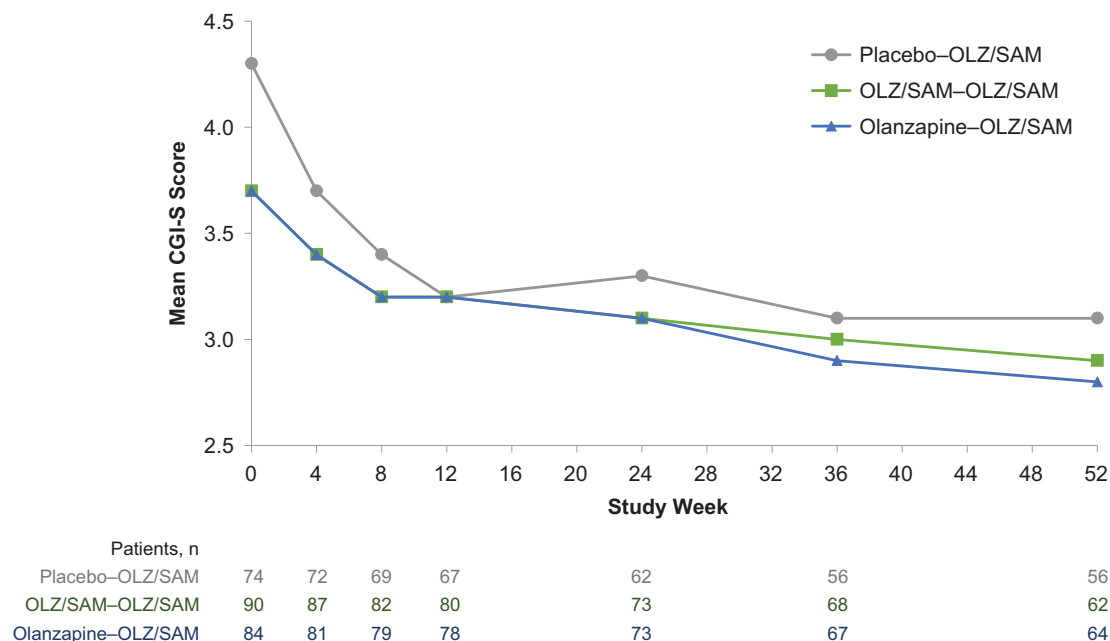


**Figure 6.** Mean Positive and Negative Syndrome Scale (PANSS) total score by lead-in study treatment (treatment received during ENLIGHTEN-1 followed by combination of olanzapine and samidorphan [OLZ/SAM] in this study) and study visit.

open-label safety studies in this patient population.<sup>30–34</sup> Overall, no clinically meaningful changes were observed in ECG or vital sign measures. There were small changes in prolactin, with few prolactin-associated AEs. Extrapyramidal AEs were infrequent, occurring in seven (2.5%) patients. As measured with the AIMS, BARS, and SAS scales, treatment-emergent parkinsonism occurred in 6.9%, dyskinesia in 2.5%, and akathisia in 4.7% of patients.

Antipsychotic treatment is associated with increases in weight.<sup>3,35</sup> Olanzapine is associated with the one of the greatest risks of weight

gain among atypical antipsychotics, similar to clozapine.<sup>8,14,15,36</sup> In addition, it has been reported that olanzapine-associated weight gain continues to increase over time.<sup>37,38</sup> While weight gain is generally most rapid during the first 6 months, it can continue over multiple years.<sup>39</sup> In long-term studies ( $\geq 48$  weeks) of olanzapine, approximately 64% of patients gained  $\geq 7\%$  of their body weight and 32% of patients gained  $\geq 15\%$  of their body weight.<sup>40</sup> Excess body weight has been linked to numerous serious health concerns, including an increased risk for all-cause mortality.<sup>41</sup> A systematic review and



**Figure 7.** Mean Clinical Global Impression-Severity (CGI-S) score by lead-in study treatment (treatment received in ENLIGHTEN-1 followed by combination of olanzapine and samidorphan [OLZ/SAM] in this study) and study visit.

meta-analysis of 89 studies found statistically significant associations between obesity and incidence of type 2 diabetes, several types of cancers, cardiovascular disease, asthma, gallbladder disease, osteoarthritis, and chronic back pain.<sup>42</sup> In this study, mean weight gain was 1.86 kg in patients who completed 52 weeks of treatment with OLZ/SAM. The findings in this study suggest that, in general, weight gain with OLZ/SAM stabilizes over the first 6 weeks of treatment, with little further weight accumulation over longer durations of treatment.

Studies evaluating changes in lipid and glycemic parameters observed with olanzapine treatment in short- and long-term studies have reported mixed results<sup>8,37,43,44</sup>; in real-world settings, olanzapine treatment has a clear association with increased risk of dyslipidemia and diabetes.<sup>45,46</sup> In general, lipid parameters remained stable with long-term OLZ/SAM treatment. Changes were generally small and tended to occur within the first 24 weeks. Mean increases from baseline in fasting glucose were observed over 52 weeks of treatment with OLZ/SAM. In contrast, there were small ( $-0.07\%$ ) changes in HbA1c, a more reliable measure of long-term glycemic control that is not impacted by reported fasting status.<sup>47</sup> Fasting insulin levels also remained stable, and together, the data suggest that glycemic control was maintained with long-term OLZ/SAM treatment.

Olanzapine has consistently been associated with a longer time to all-cause discontinuation, a common proxy for treatment effectiveness in long-term studies of antipsychotics.<sup>7-9</sup> In this study, the probability of all-cause discontinuation was low, with 66.1% of patients completing the treatment period. While there was no comparator arm, this completion rate is higher than what is typically observed in similar 1-year extension studies of other antipsychotics, which average less than 50% completion.<sup>30-34</sup>

The following limitations should be considered when interpreting these results. This study was open-label with no comparator group, which limits the conclusions that can be drawn from efficacy and safety data. Also, interpretation of findings may be impacted by missing data, as approximately one third of patients discontinued

before 52 weeks. In addition, patients entering the study had received OLZ/SAM, olanzapine, or placebo in the lead-in study (ENLIGHTEN-1), which affected baseline characteristics in this open-label study. Furthermore, the fasting status of patients was based solely on self-report, without independent confirmation, and therefore, the samples evaluated for metabolic parameters may not have been truly fasting in all cases. Data from this study should be confirmed in real-world studies of OLZ/SAM treatment.

## Conclusions

In this open-label extension study, long-term treatment with OLZ/SAM was well tolerated, and the majority of patients continued treatment through 52 weeks. In contrast to the persistent weight gain reported with olanzapine, treatment with OLZ/SAM was associated with early stabilization of changes in body weight after approximately 6 weeks of treatment. Similarly, metabolic parameters remained generally stable over 52 weeks. OLZ/SAM was also associated with sustained improvement in symptoms of schizophrenia and a low relapse rate. Together, these findings support the use of OLZ/SAM for long-term treatment.

**Acknowledgments.** The authors thank Mark S. Todtenkopf, PhD, of Alkermes, Inc., who assisted in the preparation and proofreading of the manuscript, and the ALK3831-A306 Study Group. Medical writing and editorial support were provided by Gina Daniel, PhD, and John H. Simmons, MD, of Peloton Advantage, LLC, an OPEN Health company, and funded by Alkermes, Inc.

**Financial Support.** This study was sponsored by Alkermes, Inc.

**Disclosures.** Sergey Yagoda, Christine Graham, Adam Simmons, Christina Arevalo, and Ying Jiang are employees of Alkermes, Inc. David McDonnell is an employee of Alkermes Pharma Ltd.

**Authorship Contributions.** All authors had full access to the data and contributed to data interpretation and to the drafting, critical review, and revision of



the manuscript. All authors granted approval of the final manuscript for submission.

**Supplementary Materials.** To view supplementary material for this article, please visit <http://dx.doi.org/10.1017/S1092852920001376>.

## References

- Owen MJ, Sawa A, Mortensen PB. Schizophrenia. *Lancet*. 2016;**388**(10039):86–97.
- Lehman AF, Lieberman JA, Dixon LB, *et al*. Practice guideline for the treatment of patients with schizophrenia. 2nd ed. 2010. [https://psychiatryonline.org/pb/assets/raw/sitewide/practice\\_guidelines/guidelines/schizophrenia.pdf](https://psychiatryonline.org/pb/assets/raw/sitewide/practice_guidelines/guidelines/schizophrenia.pdf). Accessed January 28, 2019.
- De Hert M, Detraux J, van Winkel R, Yu W, Correll CU. Metabolic and cardiovascular adverse effects associated with antipsychotic drugs. *Nat Rev Endocrinol*. 2012;**8**(2):114–126.
- Laursen TM, Munk-Olsen T, Gasse C. Chronic somatic comorbidity and excess mortality due to natural causes in persons with schizophrenia or bipolar affective disorder. *PLoS One*. 2011;**6**(9):e24597
- Buchanan RW, Kreyenbuhl J, Kelly DL, *et al*. The 2009 schizophrenia PORT psychopharmacological treatment recommendations and summary statements. *Schizophr Bull*. 2010;**36**(1):71–93.
- Hasan A, Falkai P, Wobrock T, *et al*. World Federation of Societies of Biological Psychiatry (WFSBP) guidelines for biological treatment of schizophrenia, part 2: update 2012 on the long-term treatment of schizophrenia and management of antipsychotic-induced side effects. *World J Biol Psychiatry*. 2013;**14**(1):2–44.
- Kahn RS, Fleischhacker WW, Boter H, *et al*. Effectiveness of antipsychotic drugs in first-episode schizophrenia and schizophreniform disorder: an open randomised clinical trial. *Lancet*. 2008;**371**(9618):1085–1097.
- Lieberman JA, Stroup TS, McEvoy JP, *et al*. Effectiveness of antipsychotic drugs in patients with chronic schizophrenia. *N Engl J Med*. 2005;**353**(12):1209–1223.
- Haro JM, Suarez D, Novick D, Brown J, Usall J, Naber D. Three-year antipsychotic effectiveness in the outpatient care of schizophrenia: observational versus randomized studies results. *Eur Neuropsychopharmacol*. 2007;**17**(4):235–244.
- Takahashi M, Nakahara N, Fujikoshi S, Iyo M. Remission, response, and relapse rates in patients with acute schizophrenia treated with olanzapine monotherapy or other atypical antipsychotic monotherapy: 12-month prospective observational study. *Pragmat Obs Res*. 2015;**6**:39–46.
- Novick D, Haro JM, Suarez D, Vieta E, Naber D. Recovery in the outpatient setting: 36-month results from the Schizophrenia Outpatients Health Outcomes (SOHO) study. *Schizophr Res*. 2009;**108**(1–3):223–230.
- Kinon BJ, Liu-Seifert H, Adams DH, Citrome L. Differential rates of treatment discontinuation in clinical trials as a measure of treatment effectiveness for olanzapine and comparator atypical antipsychotics for schizophrenia. *J Clin Psychopharmacol*. 2006;**26**(6):632–637.
- Kishimoto T, Hagi K, Nitta M, Kane JM, Correll CU. Long-term effectiveness of oral second-generation antipsychotics in patients with schizophrenia and related disorders: a systematic review and meta-analysis of direct head-to-head comparisons. *World Psychiatry*. 2019;**18**(2):208–224.
- Allison DB, Mentore JL, Heo M, *et al*. Antipsychotic-induced weight gain: a comprehensive research synthesis. *Am J Psychiatry*. 1999;**156**(11):1686–1696.
- Leucht S, Cipriani A, Spinelli L, *et al*. Comparative efficacy and tolerability of 15 antipsychotic drugs in schizophrenia: a multiple-treatments meta-analysis. *Lancet*. 2013;**382**(9896):951–962.
- Berkowitz RL, Patel U, Ni Q, Parks JJ, Docherty JP. The impact of the Clinical Antipsychotic Trials of Intervention Effectiveness (CATIE) on prescribing practices: an analysis of data from a large midwestern state. *J Clin Psychiatry*. 2012;**73**(4):498–503.
- Ketter TA, Haupt DW. Perceptions of weight gain and bipolar pharmacotherapy: results of a 2005 survey of physicians in clinical practice. *Curr Med Res Opin*. 2006;**22**(12):2345–2353.
- Potkin S, Kunovac J, Silverman BL, *et al*. Efficacy and safety of a combination of olanzapine and samidorphan in adult patients with an acute exacerbation of schizophrenia: outcomes from the randomized, phase 3 ENLIGHTEN-1 study. *J Clin Psychiatry*. 2020;**81**(2):19m12769.
- Correll CU, Kahn R, Silverman B, *et al*. A combination of olanzapine and samidorphan mitigates the weight gain observed with olanzapine alone: results from the phase 3 ENLIGHTEN-2 schizophrenia study [poster]. Presented at: Annual Congress of the Schizophrenia International Research Society; April 10–14, 2019; Orlando, FL.
- Guy W. Abnormal Involuntary Movement Scale (AIMS). In: *ECDEU Assessment Manual for Psychopharmacology*. Rockville, MD: National Institute of Mental Health, National Institutes of Health; 1976:534–537.
- Barnes TR. A rating scale for drug-induced akathisia. *Br J Psychiatry*. 1989;**154**:672–676.
- Simpson GM, Angus JW. A rating scale for extrapyramidal side effects. *Acta Psychiatr Scand Suppl*. 1970;**212**:11–19.
- Posner K, Brown GK, Stanley B, *et al*. The Columbia-Suicide Severity Rating Scale: initial validity and internal consistency findings from three multisite studies with adolescents and adults. *Am J Psychiatry*. 2011;**168**(12):1266–1277.
- Kay SR, Fiszbein A, Opler LA. The positive and negative syndrome scale (PANSS) for schizophrenia. *Schizophr Bull*. 1987;**13**(2):261–276.
- Guy W. CGI: Clinical Global Impressions. In: *ECDEU Assessment Manual for Psychopharmacology*. Rockville, MD: National Institute of Mental Health, National Institutes of Health; 1976:217–222.
- Obermeier M, Schennach-Wolff R, Meyer S, *et al*. Is the PANSS used correctly? A systematic review. *BMC Psychiatry*. 2011;**11**:113
- Kaplan EL, Meier P. Nonparametric estimation from incomplete observations. *J Am Stat Assoc*. 1958;**53**(282):457–481.
- Goel MK, Khanna P, Kishore J. Understanding survival analysis: Kaplan-Meier estimate. *Int J Ayurveda Res*. 2010;**1**(4):274–278.
- US Food and Drug Administration. Guidance document. drug-induced liver injury: premarketing clinical evaluation. 2009. <https://www.fda.gov/downloads/Drugs/GuidanceComplianceRegulatoryInformation/Guidances/UCM174090.pdf>. Accessed June 4, 2019.
- Kane JM, Skuban A, Hobart M, *et al*. Overview of short- and long-term tolerability and safety of brexpiprazole in patients with schizophrenia. *Schizophr Res*. 2016;**174**(1–3):93–98.
- Correll CU, Cucchiari J, Silva R, Hsu J, Pikalov A, Loebel A. Long-term safety and effectiveness of lurasidone in schizophrenia: a 22-month, open-label extension study. *CNS Spectr*. 2016;**21**(5):393–402.
- Forbes A, Hobart M, Ouyang J, Shi L, Pfister S, Hakala M. A long-term, open-label study to evaluate the safety and tolerability of brexpiprazole as maintenance treatment in adults with schizophrenia. *Int J Neuropsychopharmacol*. 2018;**21**(5):433–441.
- Cutler AJ, Durgam S, Wang Y, *et al*. Evaluation of the long-term safety and tolerability of cariprazine in patients with schizophrenia: results from a 1-year open-label study. *CNS Spectr*. 2018;**23**(1):39–50.
- Nasrallah HA, Earley W, Cutler AJ, *et al*. The safety and tolerability of cariprazine in long-term treatment of schizophrenia: a post hoc pooled analysis. *BMC Psychiatry*. 2017;**17**(1):305
- Bak M, Franssen A, Janssen J, van Os J, Drukker M. Almost all antipsychotics result in weight gain: a meta-analysis. *PLoS One*. 2014;**9**(4):e94112
- Wirshing DA, Wirshing WC, Kysar L, *et al*. Novel antipsychotics: comparison of weight gain liabilities. *J Clin Psychiatry*. 1999;**60**(6):358–363.
- Citrome L, Holt RI, Walker DJ, Hoffmann VP. Weight gain and changes in metabolic variables following olanzapine treatment in schizophrenia and bipolar disorder. *Clin Drug Investig*. 2011;**31**(7):455–482.
- Schoemaker J, Naber D, Vrijland P, Panagides J, Emsley R. Long-term assessment of asenapine vs. olanzapine in patients with schizophrenia or schizoaffective disorder. *Pharmacopsychiatry*. 2010;**43**(4):138–146.
- Bushe CJ, Slooff CJ, Haddad PM, Karagianis JL. Weight change by baseline BMI from three-year observational data: findings from the Worldwide Schizophrenia Outpatient Health Outcomes Database. *J Psychopharmacol (Oxford)*. 2013;**27**(4):358–365.

40. Zyprexa [package insert]. Indianapolis, IN: Eli Lilly and Company; 2018.
41. Kawachi I. Physical and psychological consequences of weight gain. *J Clin Psychiatry*. 1999;**60**(suppl 21):5–9.
42. Guh DP, Zhang W, Bansback N, Amarsi Z, Birmingham CL, Anis AH. The incidence of co-morbidities related to obesity and overweight: a systematic review and meta-analysis. *BMC Public Health*. 2009;**9**:88
43. Chrzanowski WK, Marcus RN, Torbeyns A, Nyilas M, McQuade RD. Effectiveness of long-term aripiprazole therapy in patients with acutely relapsing or chronic, stable schizophrenia: a 52-week, open-label comparison with olanzapine. *Psychopharmacology (Berl)*. 2006;**189**(2):259–266.
44. McDonnell DP, Kryzhanovskaya LA, Zhao F, Detke HC, Feldman PD. Comparison of metabolic changes in patients with schizophrenia during randomized treatment with intramuscular olanzapine long-acting injection versus oral olanzapine. *Hum Psychopharmacol*. 2011;**26**(6):422–433.
45. Koro CE, Fedder DO, L'Italien GJ, *et al.* An assessment of the independent effects of olanzapine and risperidone exposure on the risk of hyperlipidemia in schizophrenic patients. *Arch Gen Psychiatry*. 2002;**59**(11):1021–1026.
46. Koro CE, Fedder DO, L'Italien GJ, *et al.* Assessment of independent effect of olanzapine and risperidone on risk of diabetes among patients with schizophrenia: population based nested case-control study. *BMJ*. 2002;**325**(7358):243
47. World Health Organization. Use of Glycated Haemoglobin (HbA1c) in the Diagnosis of Diabetes Mellitus: Abbreviated Report of a WHO Consultation. 2011. [https://www.ncbi.nlm.nih.gov/books/NBK304267/pdf/Bookshelf\\_NBK304267.pdf](https://www.ncbi.nlm.nih.gov/books/NBK304267/pdf/Bookshelf_NBK304267.pdf). Accessed May 25, 2020.