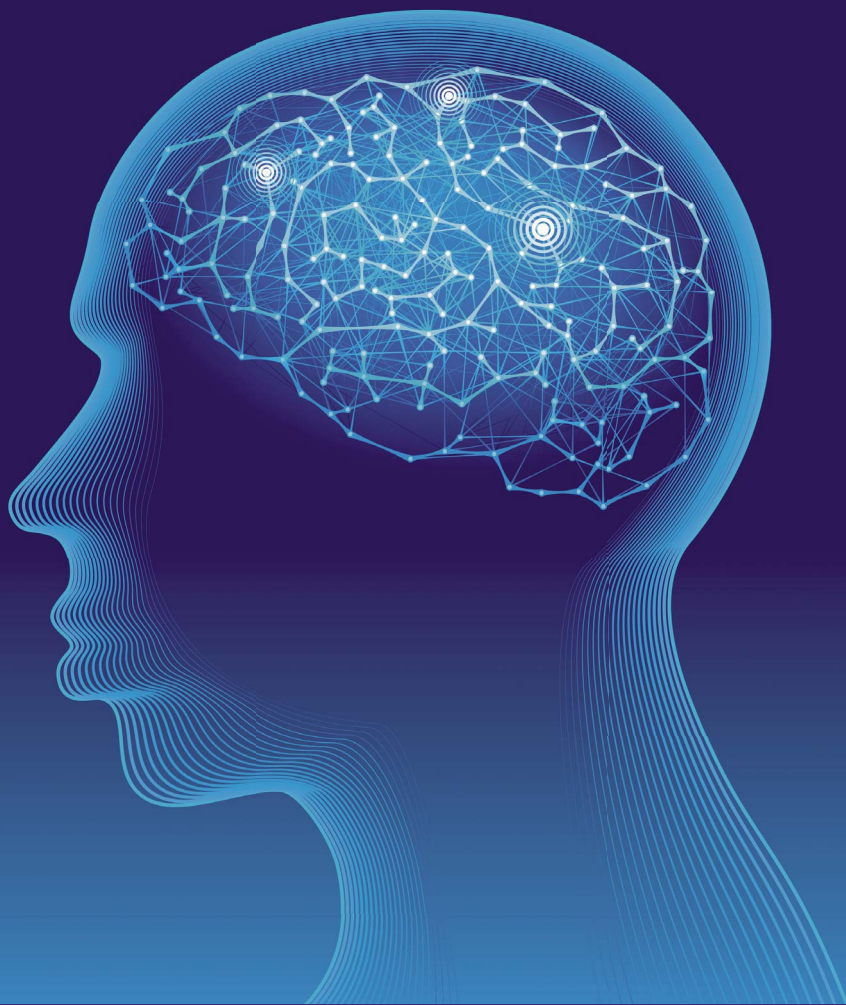


# Irish Journal of Psychological Medicine

[journals.cambridge.org/ipm](http://journals.cambridge.org/ipm)



## The Key Papers are:

**Dialectical behaviour therapy for younger adults: evaluation of 22 weeks of community delivered dialectical behaviour therapy for females 18–25 years**

*J. L. Lyng, M. A. Swales,  
R. P. Hastings*

**Negative outcomes in attention-deficit/hyperactivity disorder comorbid with oppositional defiant disorder**

*A. B. Ayaz, M. Ayaz, E. Kayan*

**An evaluation of a group-based motivational intervention for substance misusers in an Irish forensic setting**

*S. Harper, A. O'Rourke*

**Increased use of security personnel in Irish psychiatric hospitals: 2008–2012**

*S. Shannon, P. Devitt, K. C. Murphy*

**Psychiatric deinstitutionalisation in Ireland 1960–2013**

*D. Walsh*



**College of Psychiatrists  
of Ireland**

Wisdom • Learning • Compassion

<https://doi.org/10.1017/ipm.2015.45> Published online by Cambridge University Press

**CAMBRIDGE  
UNIVERSITY PRESS**

## EDITORIAL COMMITTEE

*Editor-in-Chief*

**Professor Brendan Kelly**, *Department of Adult Psychiatry, University College Dublin*

*Deputy Editor*

**Dr Niall Crumlish**, *Consultant Psychiatrist, St James's Hospital*

*Consulting Editor*

**Dr Larkin Feeney**, *Consultant Psychiatrist, Cluain Mhuire Community Mental Health Service and Senior Lecturer, Royal College of Surgeons in Ireland*

*Associate Editors*

**Dr Brian Hallahan**, *Consultant Psychiatrist, University Hospital Galway National University of Ireland, Galway, Ireland*

**Dr John Lyne**, *North Dublin Mental Health Services, Dublin, Ireland*

## EDITORIAL BOARD

**Professor Louise Gallagher**  
*Trinity Centre for Health Sciences  
St. James's Hospital, Dublin*

**Professor Michael Gill**  
*Trinity Centre for Health Sciences  
St. James' Hospital, Dublin*

**Dr Elizabeth Walsh**  
*University Hospital Galway*

**Professor Mary Cannon**  
*Consultant Psychiatrist, Beaumont Hospital,  
Dublin Associate Professor,  
Royal College of Surgeons in Ireland*

**Professor David Cotter**  
*Royal College of Surgeons in Ireland*

**Professor Patrick McGorry**  
*Centre for Youth Mental Health,  
the University of Melbourne*

**Peter F. Buckley**  
*Medical College of Georgia  
Georgia Regents University,  
Augusta GA*

**Ciaran Crummey**  
*Member, CPsychl REFOCUS Group  
(Recovery Experience Forum of Carers  
and Users of Services), Ireland*

**Dr Erik Kolshus**  
*Department of Old Age Psychiatry,  
University Hospital Limerick*

**Professor Harry Kennedy**  
*Trinity College Dublin*

**Professor Ted Dinan**  
*University College Cork*

**Professor David Meagher**  
*University of Limerick, Ireland*

**Professor Fiona McNicholas**  
*Dept of Psychiatry, Our Lady's Hospital for  
Sick Children, Dublin, Ireland*

**Professor Patricia Casey**  
*Mater University Hospital, Dublin*

**Professor Colm McDonald**  
*National University of Ireland, Galway*

**Dr Thekiso Boitshoko Thekiso**  
*Trinity College Dublin, Ireland;  
St. Patrick's University Hospital,  
Dublin, Ireland*

**Dr Jane McGrath**  
*Trinity College Dublin and St John of God  
Hospital, Co. Dublin*

*Founding Editor*

**Dr Mark Hartman**

The aim of the *Irish Journal of Psychological Medicine* is to publish original scientific contributions in psychiatry, psychological medicine (including surgery and obstetrics), and related basic sciences (neurosciences, biological, psychological, and social sciences).

The scope of the Journal includes any subspecialties of the above, including, but not limited to, behavioural pharmacology, biological psychiatry, child and adolescent psychiatry, intellectual disability, forensic psychiatry, psychotherapies, psychiatry of old age, epidemiology, rehabilitation, psychometrics, substance misuse, sexual studies, linguistics, and the history, philosophy and economics of psychiatry.

© College of Psychiatrists of Ireland 2015

**COPYING** This journal is registered with the Copyright Clearance Center, 222 Rosewood Drive, Danvers, MA 01923. Organizations in the USA who are also registered with C.C.C. may therefore copy material (beyond the limits permitted by sections 107 and 108 of US copyright law) subject to payment to C.C.C. of the per-copy fee of \$16.00. This consent does not extend to multiple copying for promotional or commercial purposes. Code 0033-2917/2015 \$16.00. Organizations authorized by the Copyright Licensing Agency may also copy material subject to the usual conditions. ISI Tear Sheet Service, 3501 Market Street, Philadelphia, Pennsylvania 19104, USA, is authorized to supply single copies of separate articles for private use only. For all other use, permission should be sought from Cambridge or the American Branch of Cambridge University Press.

**SUBSCRIPTIONS** *Irish Journal of Psychological Medicine* (ISSN 0790-9667) is published quarterly by Cambridge University Press, Journals Fulfillment Department, UPH, Shaftesbury Road, Cambridge CB2 8BS, UK/Cambridge University Press, 32 Avenue of the Americas, New York, NY 10013-2473, USA. The subscription price (excluding VAT) for institutions, which includes only electronic access, of volume 32, 2015 is £309 (US \$495 in USA, Canada and Mexico). Single parts cost £85 (US \$136 in USA, Canada and Mexico) plus postage. EU subscribers (outside the UK) who are not registered for VAT should add VAT at their country's rate. VAT registered subscribers should provide their VAT registration number. Orders, which must be accompanied by payment, may be sent to any bookseller or subscription agent or direct to the publishers: Cambridge University Press, The Edinburgh Building, Shaftesbury Road, Cambridge CB2 8RU, UK, or in the USA, Canada and Mexico, to Cambridge University Press, Journals Fulfillment Department, 100 Brook Hill Drive, West Nyack, New York 10994-2133. Japanese prices for institutions are available from Kinokuniya Company Ltd, P.O. Box 55, Chitose, Tokyo 156, Japan.

**ONLINE ACCESS** This journal is included in the Cambridge Journals Online service and can be found at <http://journals.cambridge.org/ipm>

Enquiries about advertising should be sent to [ad\\_sales@cambridge.org](mailto:ad_sales@cambridge.org)

This journal issue has been printed on FSC-certified paper and cover board. FSC is an independent, non-governmental, not-for-profit organization established to promote the responsible management of the world's forests. Please see [www.fsc.org](http://www.fsc.org) for information.

Printed by Bell and Bain Limited, Glasgow