

JOURNAL OF MENTAL SCIENCE.

Books and Pamphlets Received.

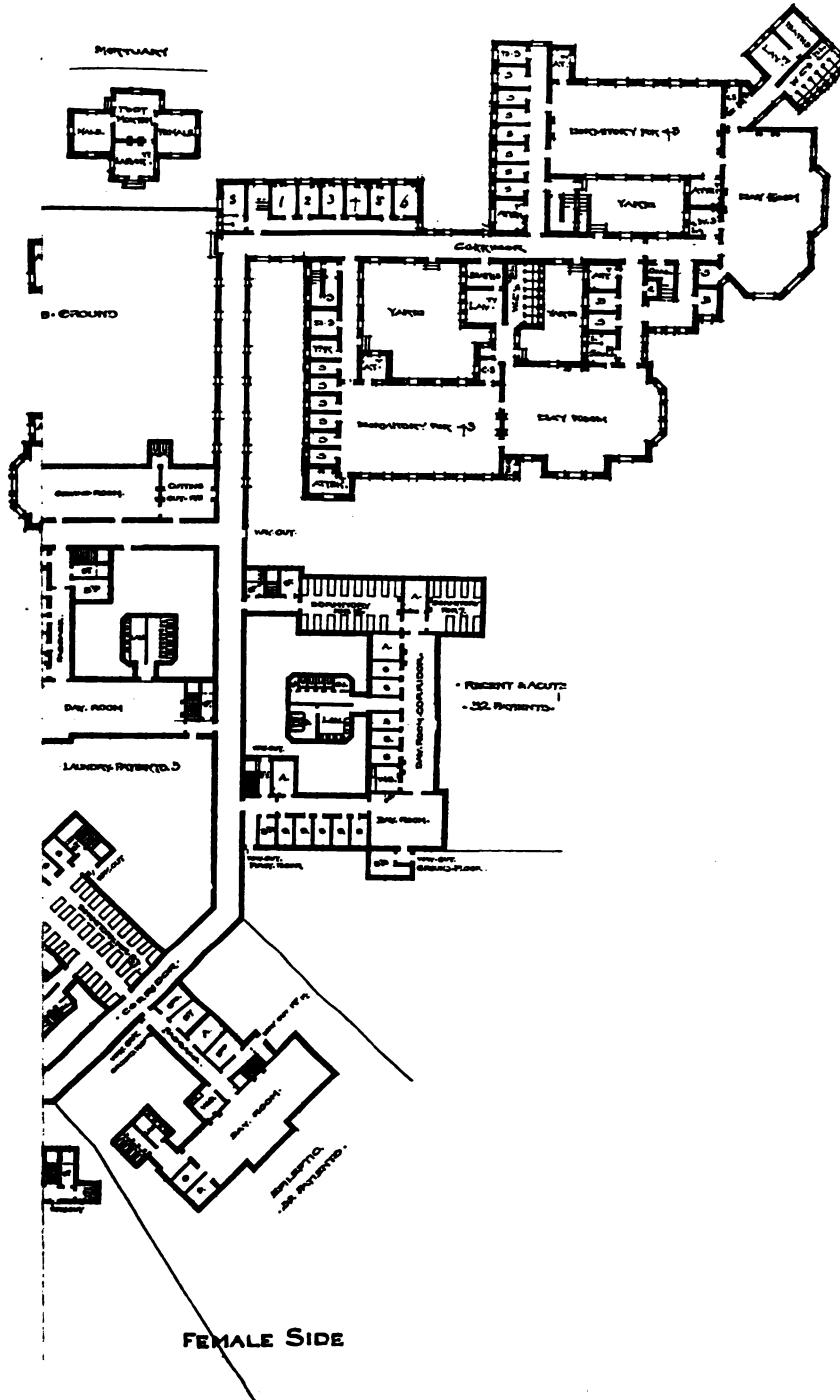
Nervous System and Visceral Disease, *Marison*; Kliniske forelaesungen over Nervesygdomme, *Pontoppidan*; Constipation, *Herschell*; Troubles mentales de l'Enfance, *Manheimer*; Asthma, *Kingscote*; Free Will and Criminal Responsibility, *Hamon*; Paraphasies, *Pitres*; Psychologische Arbeiten, *Knaepelin*; Pathology of the Emotions, *Féré*; Darwin on Trial, *Democritus*; Fractures, *Dollinger*; Dreams, *Santi di Sanctis*; Conduct and Weather, *Dexter*; Inhibition, *Breese*; Psychological Index, *Warren*; Armée Psychologique, *Durkheim*; Sexual Inversion, *Moll*; Cerebrospinal Fluid, *Thomson*; Obsessions to Homicide and Suicide, *Carrier*; Psychology for Beginners, *Stanley*; Prognosis of Epilepsy, *Duigon*; Nervenleiden, *Oppenheim*; Evolution of General Ideas, *Rillot*; Raynaud's Disease, *Monro*; Archives, *Mott*; Ventilation, *Boyle*; Crime and Criminals, *Christison*; Brain and Mind, *Christison*; Structure des Chiasma Opticus, *Cajal*; British Sanatoria for Tuberculosis, *Dunn*; Diseases of Nervous System, *Thomson*; Central Nervous System, *Edinger*; Le Rire, *Rankin*; Mental Affections, *Macpherson*; Vice and Insanity, *Wilson*.

Asylum Reports have been received for 1898-9 from those marked with an asterisk:— Beds, Berks,* Bucks, Cambridge, Carmarthen,* Chester,* Chester (Parkside*), Cornwall, Cumberland,* Denbigh, Derby (Mickleover), Devon,* Dorset,* Durham, Essex, Glamorgan,* Gloucester,* Hants,* Isle of Wight,* Hereford,* Kent (Barming*), (Chartham), Lancashire (Lancaster), (Rainhill), (Prestwich*), (Whittingham), Leicester,* Lincoln (Kesteven*), London* (Colney Hatch), (Hanwell), (Banstead), (Canehill), (Claybury), (Wandsworth*), Monmouth,* Norfolk, Northampton,* Northumberland, Nottingham,* Oxford, Salop,* Somerset (Wells*), (Taunton),* Stafford (Stafford*), (Lichfield*), (East*), Suffolk, Surrey, Sussex (East*), (Chichester*), Warwick, Wilts, Worcester,* Yorkshire (Wakefield*), (Wadsley*), (Menston*), (Clifton*), (Beverley*), Birmingham (Winson Green*), (Rubery Hill*), Bristol,* Derby,* Exeter, Hull, Ipswich, Leicester, London,* Newcastle,* Norwich, Nottingham,* Plymouth, Portsmouth, Sunderland.* HOSPITALS.—Manchester, Wonford,* Barnwood,* Albert, Lincoln,* St. Luke's, St. Andrew's, St. Ann's,* Coppice,* Warneford,* Coton Hill, Bethlem,* Earlswood, Bootham, Retreat,* Colchester,* Broadmoor,* Isle of Man,* Aberdeen,* Argyll,* Ayr,* Dumfries,* Edinburgh,* Midlothian,* Fife,* Dundee,* Montrose,* Inverness,* Lanark,* Glasgow Royal,* Barony,* Govan,* City,* Kirklands,* Perth,* Murthly, Roxburgh,* Stirling,* Baldo- van,* Armagh, Ballinasloe, Belfast,* Carlow, Castlebar, Clonmel,* Cork,* Downpatrick,* Ennis,* Enniscorthy,* Kilkenny, Killarney, Letterkenny, Limerick,* Londonderry,* Marvborough, Monaghan, Mullingar,* Omagh, Dublin,* Sligo, Waterford.*

The following Asylum Reports have also come to hand:—Manhattan, Pennsylvania, Dunville and Warren, Willard, Utica, Washington, Craig Colony, Michigan, New Hampshire, Lebanon Hospital, Hartford Retreat, Verdun, Montreal, Massachusetts General Hospital, Ontario, Matteawan, Egypt, New South Wales, Victoria.

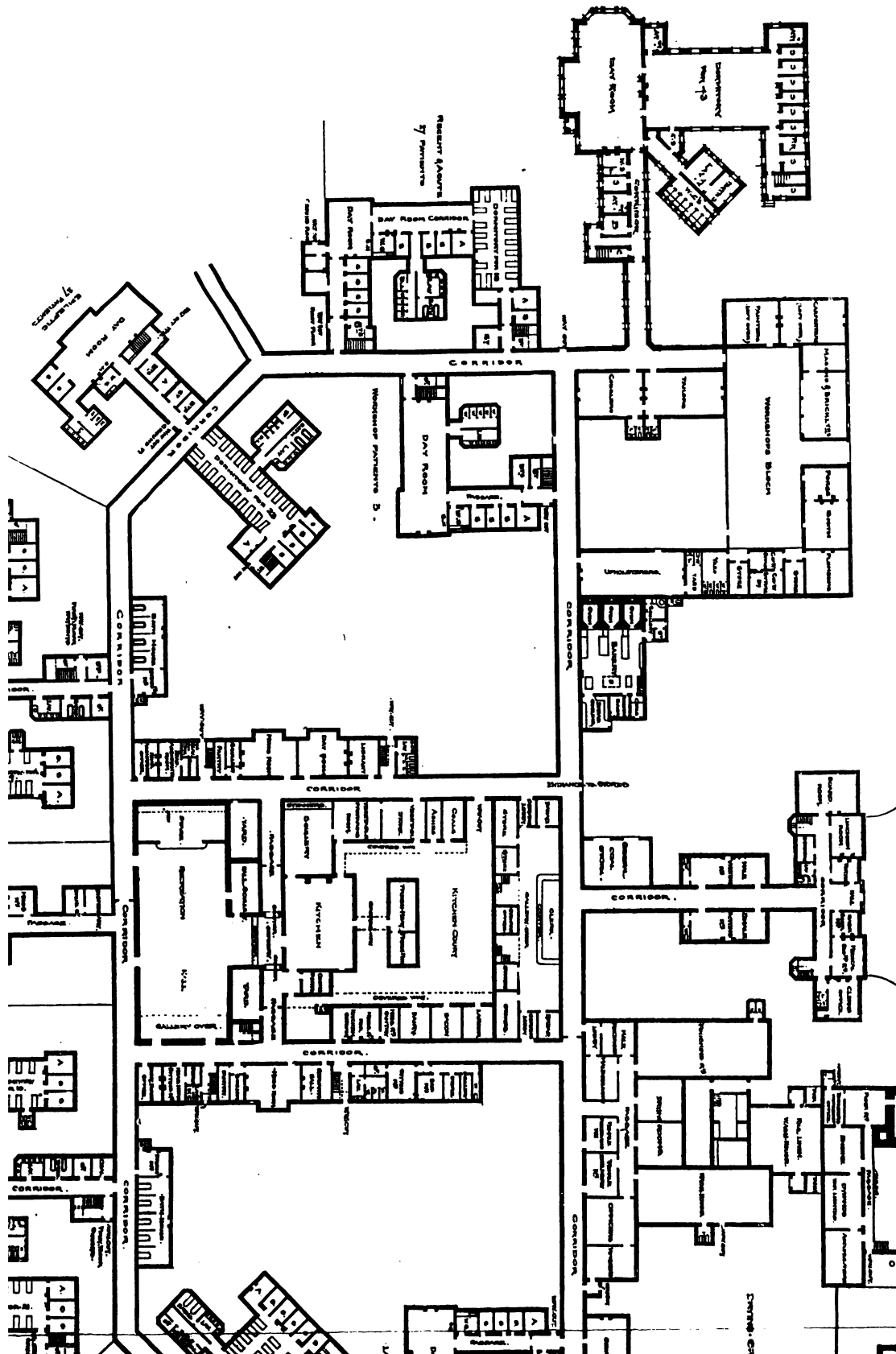
Authors of Original Papers receive 25 reprints of their articles free of cost, if application be made when returning proof. If any *extra* reprints are required, notice should be at the same time sent to the Printers, Messrs. ADLARD and SON, Bartholomew Close, London, E.C., who will supply them at a fixed charge; to whom complaints of non-receipt of the JOURNAL are to be sent. Unless instructions are sent by authors of Papers when the proofs are returned, no copies can be guaranteed.

The copies of the *Journal of Mental Science* are regularly sent by book post to the Ordinary and Honorary Members of the Association. Any change of address should be intimated to the General Secretary.



To illustrate Dr. STEEN's paper.

Allard & Son, Imp.



JOURNAL OF MENTAL SCIENCE.

CONTENTS FOR JANUARY, 1900.

Original Articles.—	Pages
Abstract of a paper on the Necessity for Isolating the Phthisical Insane; by Eric France, M.B., B.S.—On the Mental State of Auguste Comte; by William W. Ireland.—Comparative Lunacy Law; by A. Wood Ranton, Esq., Barrister-at-Law.—The Physical Signs of Insanity; by F. Graham Crookshank, M.D.Lond.—On some of the Rarer Skin Diseases affecting the Insane; by Thos. B. Hyslop, M.D.—Epilepsy associated with Insanity; by Ernest W. White, M.B.Lond., M.B.C.P.—Notes on 206 Consecutive Cases of Acute Mania treated without Sedatives; by C. E. Hitchcock, M.D., M.A.—Hysteria and its Relation to Insanity; by Geoffrey Hungerford, L.R.C.P. and L.R.C.S.I.—The Evolution of Asylum Architecture, and the Principles which ought to control Modern Construction; by E. H. Steen, M.D.Lond.	1—109
Clinical Notes and Cases.—	
Cases of Communicated Insanity; by E. W. Griffin, M.D.—Major Operations on the Insane: Notes of a Case of Cataract; by Major J. H. Tule Walsh, I.M.S.—Spurious Pregnancy; by G. Findlay, M.A., M.B.—An Attack of Epilepsy (Status Epilepticus) followed within six weeks by an Attack of Chorea, occurring in a Patient suffering from Acute Puerperal Insanity; by C. C. Easterbrook, M.A., M.B.	109—122
Occasional Notes.—	
Tuberculosis in Asylums.—Pensions.—The Sale of Intoxicating Liquors.—London Lunacy.—The Treatment of the Poor.—Masturbation in Schools.—Varieties of Mental Disease in their Relation to Crime	123—134
Reviews.—	
The Fifty-third Report of the Commissioners in Lunacy, England.—Forty-first Annual Report of the General Board of Commissioners in Lunacy for Scotland.—Forty-eighth Report of the Inspectors of Lunatics, Ireland.—The Universal Illusion of Free Will and Criminal Responsibility; by A. HAMON.—Report of the Chairman of the Commissioners of Prisons upon the Treatment of Crime in the United States.—Judicial Statistics, England and Wales, 1897.—Contribution à l'Étude du Prognostic de l'Épilepsie chez les Enfants; par le Dr. E. LE DUGON.—Recherches cliniques et thérapeutiques sur l'Épilepsie, l'Hystérie, et l'Idiotie; par BOURNEVILLE.—Leçons sur les maladies nerveuses: Deuxième série (Hôpital Saint-Antoine); par E. BRISSAUD.—Genèse et Nature de l'Hystérie; par le Dr. VAUL SOLLIER.—Introduction à la Médecine de l'Esprit; par le Dr. MAURICE DE FLEURY.—L'Année psychologique; par A. BINET.—The Human Machine; by J. F. NISBET.—La Nouvelle Monadologie; par CH. RENOUVIER et L. PRAT.—The Evolution of General Ideas; by TH. RIBOT, authorised translation by FRANCES A. WELBY.—On Deafness, Giddiness, and Noises in the Head; by Dr. EDWARD WOAKES, assisted by CLAUD WOAKES.—Nervenleiden und Erziehung (Neuropathy and Education); Prof. H. OPPENHEIM.—Kliniske Forelæsninger over Nervesygdomme (Clinical Lectures on Nervous Diseases); Dr. KNUD PONTOPPIDAN	134—171
Psychological Retrospect.—	
American Retrospect; by Dr. H. M. BANNISTER.—French Retrospect; by Dr. RENE SEMELAINNE.—German Retrospect; by Dr. J. BRESLER.—Belgian Retrospect; by Dr. JULES MOREL.—Dutch Retrospect; by Dr. F. M. COWAN.—Danish Retrospect; by Dr. FRIIS.—Asylum Reports, 1898-9	172—193
Notes and News	193—214

ADLARD AND SON, PRINTERS, BARTHOLOMEW CLOSE, E.C., AND 20, HANOVER SQUARE, W.