

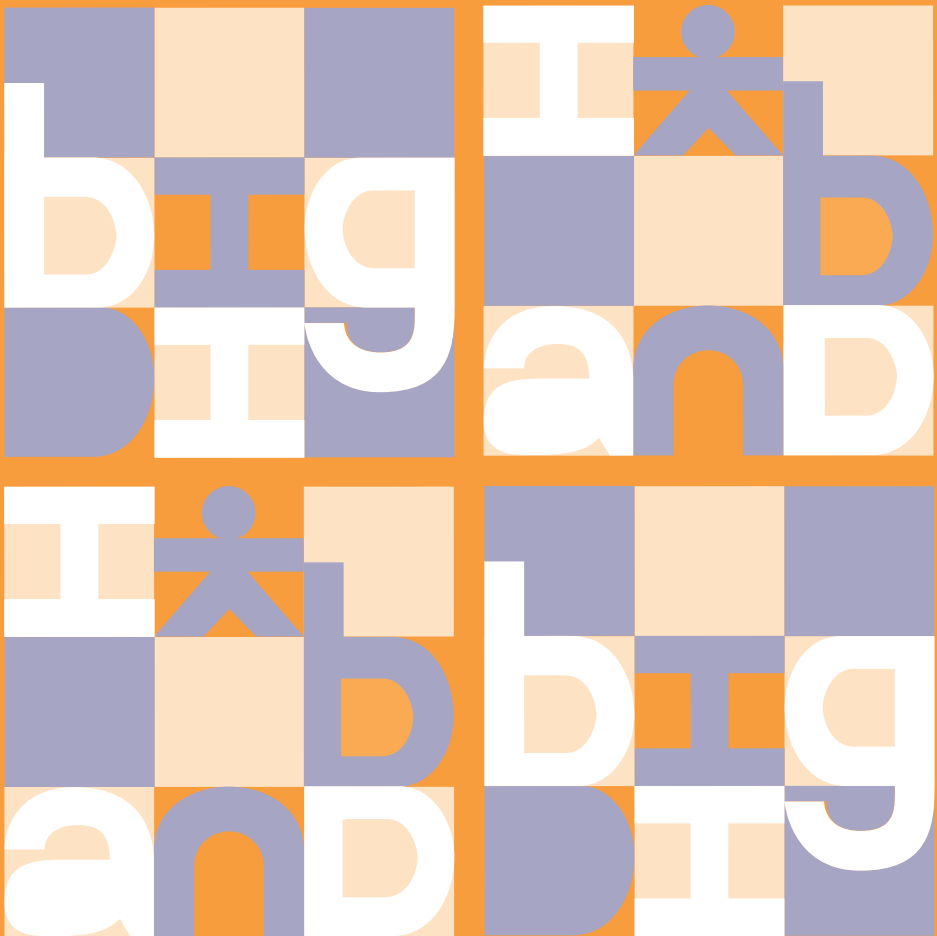
# Journal of Child Language

ISSN 0305-0009

Volume 44

NUMBER 3

MAY 2017



**CAMBRIDGE**  
UNIVERSITY PRESS

# Journal of **Child Language**

The Journal of the International Association for the Study of Child Language

**Editor** Johanne Paradis *University of Alberta*

**Associate Editors** Elma Blom *Utrecht University*

Cécile De Cat *University of Leeds*

Caroline Rowland *University of Liverpool*

Melanie Soderstrom *University of  
Manitoba*

Holly Storkel *University of Kansas*

Laura Wagner *Ohio State University*

Elizabeth Wonnacott *University  
College London*

**Editorial Assistant** Miles Lambert

**Founding Editor** David Crystal *(Bangor)*

## **Editorial Board**

S. Allen *(Kaiserslautern)*

E. Bavin *(La Trobe)*

R. Berman *(Tel Aviv)*

H. Behrens *(Basel)*

E. Clark *(Stanford)*

S. Curtin *(Calgary)*

P. Dale *(New Mexico)*

A. De Houwer *(Erfurt)*

K. Demuth *(Macquarie)*

P. Fletcher *(Cork)*

S. Gelman *(Michigan)*

R. Golinkoff *(Delaware)*

M. T. Guasti *(Milan)*

E. Hoff *(Florida Atlantic)*

J. Iverson *(Pittsburgh)*

H. Jisa *(Lyon)*

M. Kehoe-Winkler *(Geneva)*

E. Kidd *(Australia)*

P. Li *(Pennsylvania)*

E. Lieven *(Leipzig)*

B. MacWhinney *(Carnegie Mellon)*

T. Marinis *(Reading)*

R. Mayberry *(San Diego)*

K. McGregor *(Iowa)*

G. Morgan *(London)*

Y. Oshima-Takane *(McGill)*

J. Pine *(Liverpool)*

L. Serratrice *(Reading)*

(The Secretary of the  
International Association  
for the Study of Child  
Language)

D. Slobin *(Berkeley)*

J. Snedeker *(Harvard)*

S. Stokes *(Canterbury, NZ)*

T. Suzuki *(Kyoto)*

M. Tomasello *(Leipzig)*

M. Vihman *(York)*

J. Werker *(British Columbia)*

V. Yip *(Hong Kong)*

## **Editorial Policy**

The journal publishes articles on all aspects of the scientific study of language behaviour in children, the principles which underlie it, and the theories which may account for it. The international range of authors and breadth of coverage allow the journal to forge links between many different areas of research including psychology, linguistics, cognitive science and anthropology. This interdisciplinary approach spans a wide range of interests: phonology, phonetics, morphology, syntax, vocabulary, semantics, pragmatics, sociolinguistics, and any other recognised facet of language study. Aspects of reading development are considered when there is a clear language component. The journal normally publishes full-length empirical studies or General Articles as well as shorter Brief Research Reports, and welcomes articles on new databases and research tools. The journal publishes thematic special issues on occasion, the topic and format of which are determined by the editorial team.

## **Abstracting**

The journal is covered by relevant abstracting and indexing services including:

*Abstracts in Anthropology, Applied Social Sciences Index & Abstracts, Arts & Humanities Citation Index (AHCI), Association for Education and Rehabilitation of the Blind and Visually Handicapped Yearbook, Bibliography of Developmental Medicine & Child Neurology, British Education Abstracts, Chicorel Abstracts to Reading and Learning Disabilities, Child Development Abstracts, Communication Abstracts, Current Contents, Current Index to Journals in Education, Education Index, Education Resources Information Center, European Reference Index for the Humanities and Social Sciences (ERIH PLUS), Language Teaching, Linguistic Abstracts, Linguistic Bibliography, Linguistics and Language Behaviour Abstracts, MLA Bibliography, PsychINFO, Psychological Abstracts, Sage Family Studies Abstracts, Scopus, Social Sciences Citation Index (SSCI), Sociological Abstracts.*