



Carboxylic acids: effective inhibitors for calcium sulfate precipitation?

TAHER RABIZADEH^{1,*}, CAROLINE L. PEACOCK¹ AND LIANE G. BENNING^{1,2,*}

¹ Cohen Geochemistry Laboratory, School of Earth and Environment, University of Leeds LS2 9JT, UK

² GFZ German Research Centre for Geosciences, Telegrafenberg, D-14473 Potsdam, Germany

[Received 1 May 2014; Accepted 19 November 2014; Associate Editor: T. Rinder]

ABSTRACT

Results are reported here of an investigation into the effects of three carboxylic acid additives (tartaric, maleic and citric acids) on the precipitation of calcium sulfate phases. Precipitation reactions were followed at pH 7 in the pure CaSO₄ system and in experiments with 0–20 ppm carboxylic acids added using *in situ* UV-VIS spectrophotometry (turbidity). The solid products were characterized in terms of their mineralogical composition, using X-ray diffraction, during and at the end of each reaction, and in terms of their morphological features, by scanning electron microscopy. All additives increased the time needed for turbidity to develop (induction time, start of precipitation) and the comparison between additive and additive-free experiments showed that, at equivalent concentrations, citric acid performed far better than the other two carboxylic acids. In all cases bassanite precipitated first and with time it transformed to gypsum. The addition of citrate stabilized bassanite and changed the final gypsum habit from typical needle-like crystals in the pure CaSO₄ system to plates in the citrate-additive experiments.

KEYWORDS: gypsum, bassanite, carboxylic acids, inhibition, crystallization.

Introduction

CALCIUM SULFATES are important rock-forming minerals that occur in thick evaporitic deposits throughout geological history (Kinsman, 1969). In the calcium sulfate system three phases with various degrees of hydration exist: the dihydrate, gypsum (CaSO₄·2H₂O), the hemihydrate, bassanite (CaSO₄·0.5H₂O) and the anhydrous anhydrite (CaSO₄). The stability and formation of these phases are very temperature- and concentration-dependent (Freyer and Voigt, 2003). Between ambient temperature and ~40°C the most stable phase is gypsum. With increasing ion concentrations and/or temperature, the solubilities of bassanite and anhydrite decrease leading to the dehydration of gypsum and its transformation to less hydrous polymorphs (Freyer and Voigt,

2003). The mechanisms controlling the nucleation and growth of gypsum from aqueous solutions have gained renewed interest recently, however, because gypsum probably does not form directly from solution. One study (Wang *et al.*, 2012) has suggested that gypsum forms through non-classical nucleation *via* an amorphous calcium sulfate intermediate, while another study (Van Driessche *et al.*, 2012) suggested that gypsum forms not through amorphous precursors but through the initial precipitation of nanocrystalline bassanite particles that self-assemble into larger gypsum crystals through oriented attachment.

The gypsum formation pathway is important because among calcium sulfates, gypsum is mined extensively for use as the crucial component in

* E-mail: eetr@leeds.ac.uk

L.G.Benning@leeds.ac.uk

DOI: 10.1180/minmag.2014.078.6.13

This paper is published as part of a special issue in *Mineralogical Magazine*, Vol. 78(6), 2014 entitled 'Mineral–fluid interactions: scaling, surface reactivity and natural systems'.

plasters and cements (e.g. Camarini and De Milito, 2011); to make plasters, gypsum has to be dehydrated to bassanite through the use of large amounts of energy. Equally important however, is the fact that in several industrial processes that rely on water-handling systems (e.g. oil and gas production, water desalination; Moghaddasi *et al.*, 2006; Rahardianto *et al.*, 2008), the precipitation of calcium sulfate phases leads to the deposition of minerals in pipes, filters and heat exchangers, forming mineral scales. Cleaning or removing such mineral scales is costly and undesirable and affects the efficiency and lifetime of processing technologies (e.g. Mi and Elimelech, 2010).

In order to reduce or mitigate calcium sulfate scaling, various simple anti-scaling approaches have been suggested, the most common being the use of inorganic (e.g. Mg^{2+} ; Guan *et al.*, 2010) or organic additives (e.g. sulfonic, phosphonic or carboxylic compounds; Shakkthivel and Vasudevan, 2006; Prisciandaro *et al.*, 2005; Akyol *et al.*, 2009). The main requirements for an effective additive are that: (1) it is readily available; (2) it is effective at low concentrations; (3) it is cheap and its addition will not significantly affect production costs; (4) ideally it is biodegradable or non-toxic to the environment; and (5) it reduces mineral formation or prevents nucleated phases from adhering to surfaces of crucial production apparatus. Among additives fulfilling many of the above requirements are carboxylic acids (Hasson *et al.*, 2011; Cao *et al.*, 2014). To date, studies that have tested the effects of carboxylic acids on calcium sulfate precipitation have primarily evaluated changes in precipitation onset or the effect of high temperatures (Prisciandaro *et al.*, 2005; Senthilmurugan *et al.*, 2010; Ling *et al.*, 2012; Amjad and Koutsoukos, 2014). Missing is a mechanistic understanding of the effects of variable concentrations of carboxylic acid and/or various carboxylic acid moieties.

To address this gap results are presented here on the effects of three carboxylic acids (citric, maleic and tartaric) and variable additive concentrations (0–20 ppm) on the kinetics and phase morphologies that develop during homogeneous calcium sulfate formation reactions and derive a more mechanistic understanding of the processes.

Experimental methods

Inhibitor-free calcium sulfate precipitates (termed 'pure $CaSO_4$ ' hereafter) were produced by mixing

equal volumes of a 100 mM $CaCl_2 \cdot 2H_2O$ solution and a 100 mM Na_2SO_4 solution (99% purity, VWR) at room temperature (21°C) and under constant and continuous stirring. The mixed solutions were supersaturated with respect to gypsum (saturation index $SI_{Gyp} = 0.5$) but undersaturated with respect to bassanite ($SI_{Bas} = -0.37$). The saturation indices (the logarithm of the ion activity product over the solubility product) and the related solubility products ($K_{sp,gypsum} = 10^{-3.66}$ and $K_{sp,bassanite} = 10^{-4.53}$) were calculated by means of the geochemical computer code *PHREEQC* using the LLNL database (Parkhurst and Appelo, 1999).

Carboxylic acids (citric, maleic or tartaric acid; 99–100%, VWR) were added to the initial sodium sulfate solution at concentrations of between 5 and 20 ppm. In all experiments, prior to mixing, the pH of the initial solutions was adjusted to 7, with 0.1 M NaOH.

The kinetics of the reactions in the absence and presence of carboxylic acids was monitored through the development of turbidity in the mixed solutions as measured using a UV-VIS spectrophotometer (Uvikon XL) at 520 nm. Reactions were followed in triplicate at room temperatures for up to 4 h and the variations in the turbidity onset from the three repeats are reported in minutes. At intermediate time steps and at the end of each experiment the solutions were quench-filtered (0.2 μm) under vacuum with isopropanol and the solids retrieved. These solids were characterized mineralogically using powder X-ray diffraction (XRD; Bruker D8 diffractometer; $CuK\alpha 1$; 5–30°2 θ ; 0.105°2 θ /step), while the morphology of the phases formed was imaged using a field emission gun scanning electron microscope (FEG-SEM, FEI Quanta 650, 3 kV).

Results

Turbidity developed in all of the experiments but the onset of turbidity occurred after different periods of time (induction times) that were dependent on additive type and concentration. Comparing the turbidity curve from the pure $CaSO_4$ experiment with equivalent curves from experiments where 20 ppm of the three carboxylic acids were added (Fig. 1), revealed a carboxylic acid-dependent increase in induction time. In the pure $CaSO_4$ system, the first increase in turbidity was observed after 6 \pm 1 min and the increase in absorbance took ~60 min to reach a steady value

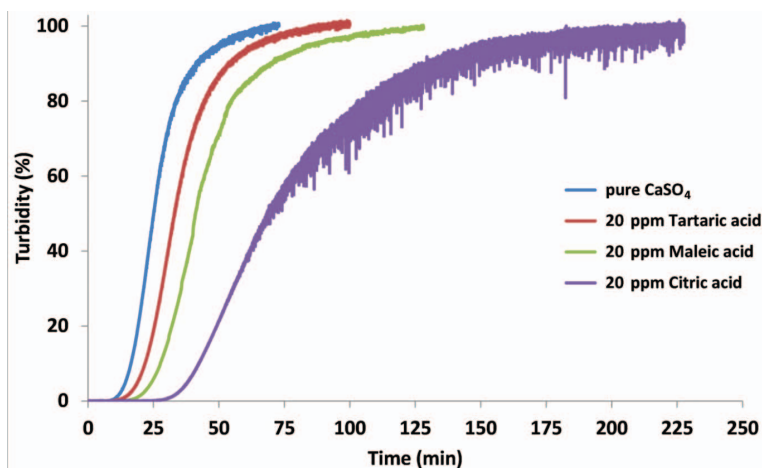


FIG. 1. The effect of adding 20 ppm tartaric, maleic or citric acid on the development of turbidity compared to the pure CaSO_4 system.

on a plateau. In the presence of 20 ppm carboxylic acids the induction times increased to 9 ± 1 min, 16 ± 1 min and 25 ± 1 min for tartaric, maleic and citric acid, respectively, and specifically in the case of added citric acid the reaction curve took much longer to reach a plateau (~ 200 min; Fig. 1).

Testing variable concentrations of citric acid (5, 10, 20 ppm) showed a proportional increase in induction time with increasing additive concentration (Fig. 2). The 6 ± 1 min induction time observed in the pure CaSO_4 system almost

doubled in the presence of 5 ppm citric acid (10 ± 1 min), tripled with 10 ppm (17 ± 1 min) and at 20 ppm citric acid led to an induction time four times greater than that for the pure CaSO_4 system (25 ± 1 min).

The XRD analyses of the solids recovered at the end of each reaction (in both the pure and carboxylic acid-amended experiments) revealed that the sole mineral end product was gypsum. However, samples filter-quenched just after the onset of turbidity in the pure and citric acid system (e.g. after 30 s in the pure system and after

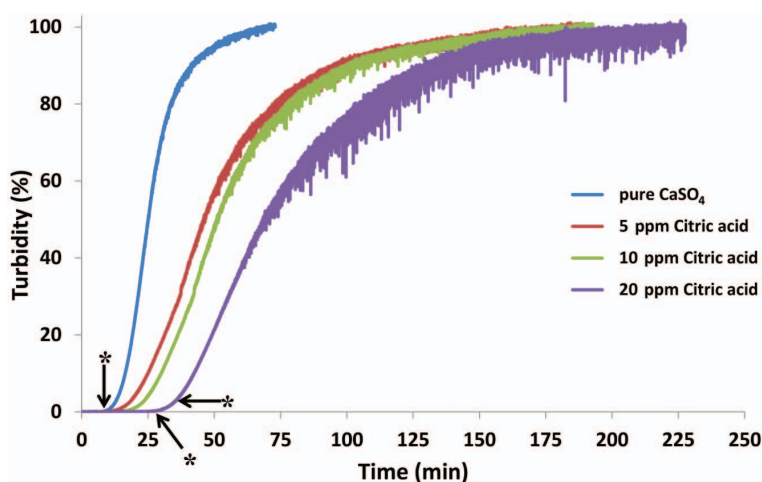


FIG. 2. The effect of variable concentrations of citric acid (5, 10, 20 ppm) on the development of turbidity. * Indicates the absolute times (~ 7 min in the pure system and 28 and 35 min, respectively, in the 20 ppm citric acid system) when solids were removed and analysed. Data are shown in Figs 3*a,c,d* and 4*a,c*.

3 and 10 min in the presence of 20 ppm citric acid; marked with * in Fig. 2 and corresponding to ~7, 26 and 35 min in absolute time, respectively) showed in the XRD patterns the presence of bassanite coexisting with gypsum (Fig. 3*a,c*). In both cases with time, the proportion of bassanite decreased (bassanite peaks decreased in intensity or disappeared completely) showing that bassanite was an intermediate phase (Fig. 3*d*) but that in both systems the final product was pure gypsum (Fig. 3*b,e*). As mentioned above, an increase in induction time prior to the onset of turbidity was also observed in the presence of the other two carboxylic acids (maleic and tartaric; Fig. 1). Although the shape and slope of the turbidity curves hint at a similar process, we do not have equivalent time-resolved XRD evidence that these additives also stabilized bassanite (but see below and Fig. 4*e,f*).

Photomicrographs of the intermediate (~7 min, or 30 s after onset of turbidity) and end-product (after 70 min of total reaction) materials in the pure CaSO₄ system revealed that bassanite was present at the beginning of the reaction only as elongated nanorods (up to ~200 nm long) while at the end of the experiment only gypsum was present as larger (up to ~ μ m size), thin, needle-like crystals, partly twinned (Fig. 4*a,b*). These morphologies and sizes are equivalent to those reported by Van Driessche *et al.* (2012) and Wang *et al.* (2013) and the presence of bassanite in our samples had already been documented through XRD (Fig. 3*a,c*). At the end of the pure system-crystallization reaction (Fig. 4*b*) all bassanite had

transformed and only large, elongated (between 5–50 μ m) needle-like and twinned gypsum crystals were present, again confirming the XRD data (Fig. 3*b*). In the presence of 20 ppm citric acid, after the onset of turbidity (3 min, 28 min after mixing of the initial solutions) the bassanite identified by XRD (Fig. 3*c*) was present as very small but almost isometric nanoparticles

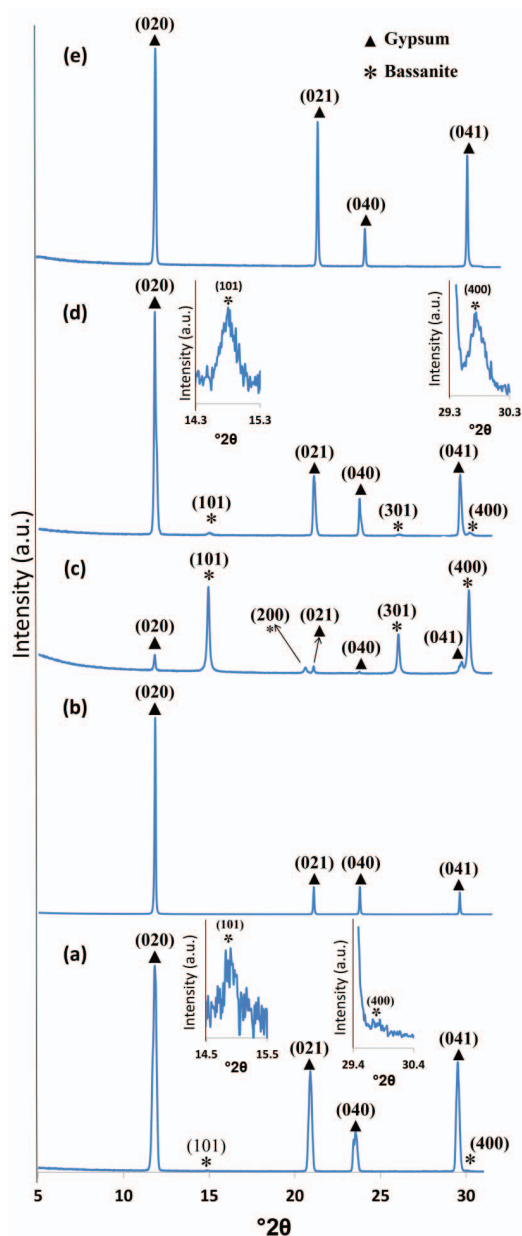


FIG. 3. XRD patterns of precipitated materials from (a) the pure CaSO₄ system removed from the reaction solution 30 s after turbidity onset (absolute time is ~7 min) with stars marking bassanite peaks of low intensity that are seen more easily in the insets, where the low-intensity (101) and (400) bassanite peaks are highlighted; (b) same system but 63 min after turbidity onset (absolute time = 70 min) when the transformation to gypsum was complete and no bassanite remained; (c–e) XRD patterns from the system with 20 ppm citric acid added; (c) 3 min after turbidity onset (absolute time = 28 min) showing all four distinct and very intense bassanite peaks – ((101), (200), (301) and (400) all marked with a star); (d) 10 min after turbidity onset (absolute time = 35 min) showing smaller bassanite peaks; and (e) 175 min after turbidity onset (absolute time = 200 min) where only gypsum peaks remain and all bassanite has been transformed.

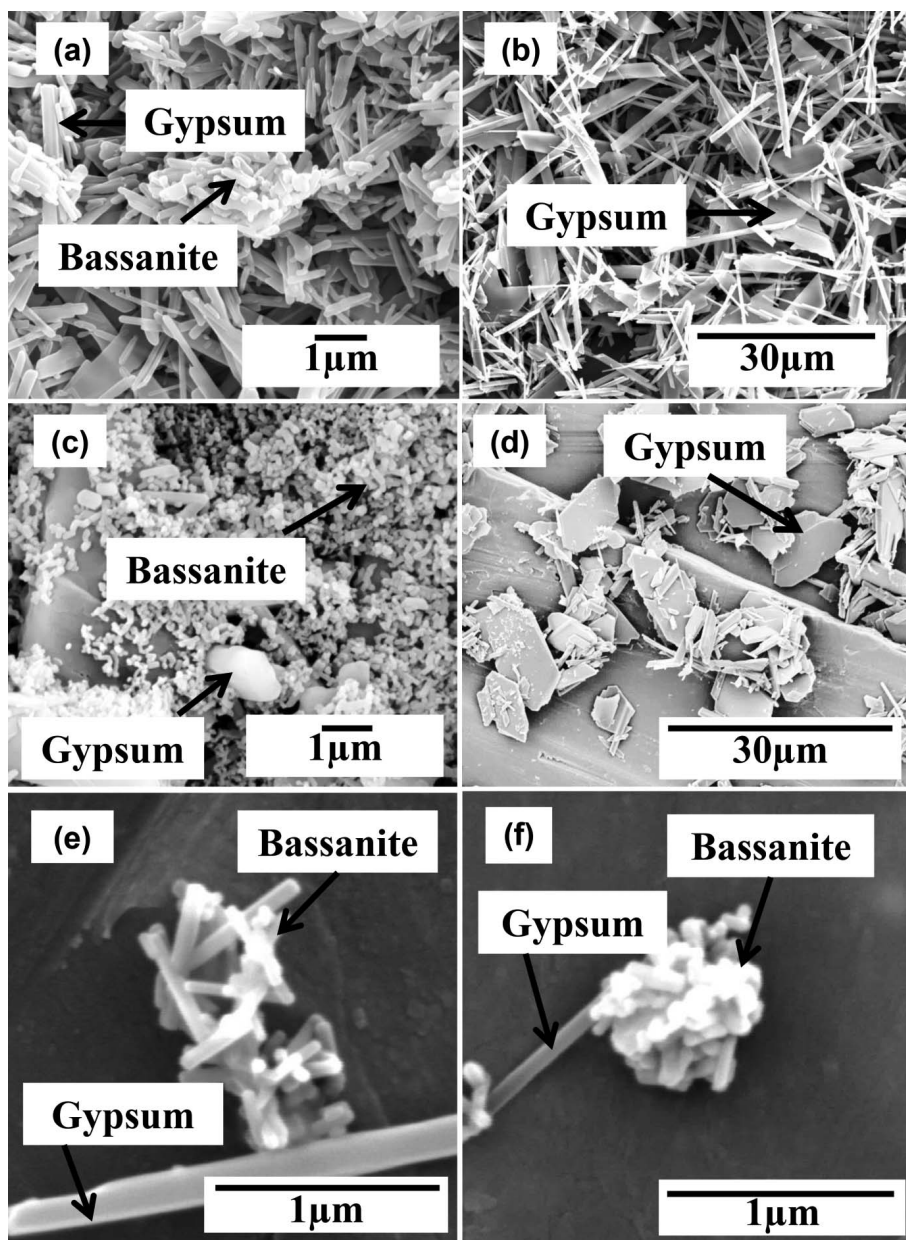


FIG. 4. SEM image of precipitated materials from experiments in: (a) the pure CaSO_4 system 30 s after turbidity onset showing bassanite nanorods and gypsum needles; (b) the pure CaSO_4 system 63 min after turbidity onset (70 minutes total time) showing only variably sized gypsum needles; (c) tiny bassanite nanoparticles formed in the presence of 20 ppm citric acid 3 min after turbidity onset together with some larger gypsum crystals; (d) plate-like gypsum crystals formed in the presence of 20 ppm citric acid after 200 min of total reaction; (e) bassanite nanorods and a single larger gypsum needle collected a few minutes after the onset of turbidity in the 20 ppm maleic acid experiment; (f) bassanite nanorods and a single larger gypsum needle collected a few minutes after the onset of turbidity in the 20 ppm tartaric acid experiment.

(<90 nm; Fig. 4c) that occurred together with larger gypsum crystals. At the end of the reaction, when the turbidity curve reached a plateau (after 200 min; Fig. 4d), only gypsum was present. It was striking that, compared to the pure CaSO₄ system, both the bassanite and gypsum in the citrate system did not exhibit the typical bassanite nanorod or gypsum needle-like habits, but rather far more isomeric (bassanite; Fig. 4c) and distinctly platy (gypsum; Fig. 4d) habits. Although we have no XRD evidence of bassanite stabilization in the presence of maleic and tartaric acid, photomicrographs of samples removed a few minutes after the onset of turbidity in the 20 ppm experiments with these carboxylic acids present revealed equivalent nanorod (particles <200 nm) morphologies that are inferred here to be bassanite. These occurred together with longer, needle-like crystals inferred to be gypsum (Fig. 4e,f). Contrary to the citric acid system however, in the presence of 20 ppm tartaric or maleic acid, the shape, size or habit of the intermediate bassanite and end-product gypsum were the same as in the pure CaSO₄ experiment, although a slight ‘thinning’ of the gypsum needles was observed.

Discussion

Measuring turbidity and estimating induction times in the absence and presence of additives is one of the most common methods of evaluating the efficiency of additives as a mechanism to delay the nucleation and growth of sparingly soluble scale minerals.

Additives that are biodegradable, such as the carboxylic acids used in the current study, and that delay dramatically the nucleation and/or growth of a phase at low concentrations, are considered to be effective and are often referred to as ‘inhibitors’ although they do not inhibit nucleation and growth but most often just delay or change the reaction progress.

Our data revealed that at equal concentrations (20 ppm), among the three additives tested, citric acid increased the induction time and decreased the slope of the turbidity curve more than either of the tartaric and maleic acids, inferring that citric acid is, inherently, a better inhibitor. If we also consider the differences in molar concentrations of the carboxylic acids used: $C_{\text{cit}} = 1.01 \mu\text{M}$; $C_{\text{tart}} = 1.33 \mu\text{M}$ vs. $C_{\text{mal}} = 1.72 \mu\text{M}$, these further support the fact that citric acid is the most effective inhibitor even though it is present in the

lowest molar concentration. The reasons for its greater effectiveness are not yet clear but probably stem from the variations in molecular geometries and sorption capacities between these three carboxylic acids.

Additives can affect the nucleation and growth of scale minerals, e.g. by forming complexes or chelating agents with the active ions in the nucleating solutions (equation 1; where $x = 2$ for maleic/tartaric acids or 3 for citric acid) or by sorbing to active crystal sites and inhibiting mineral growth (e.g. Crabtree *et al.*, 1999; Badens *et al.*, 1999; Ersen *et al.*, 2006; Magallanes-Rivera *et al.*, 2009).



In the case of the carboxylic acids tested, complexation with calcium is well known (Bazin *et al.*, 1995) but sorption and growth inhibition also seem to play important roles. All carboxylic acids delayed the onset of nucleation (increased induction time compared to the pure system, Figs 1, 2). The citric acid additive also affected the growth of the scale mineral, however, in that both bassanite and gypsum exhibited different habits compared to the additive-free phases (Fig. 4). Finally, of interest for mineral-scale formation and inhibition is the fact that, compared to the pure system, even low concentrations of citric acid stabilized the bassanite phase for much longer periods.

In additive experiments one of the fundamental parameters that controls ‘inhibition’ either through complexation with the active ions (in this case Ca²⁺) or sorption to active growth sites is the speciation and degree of protonation of the additive used. All our experiments with or without additives were carried out with the initial solutions adjusted to pH 7. At this pH value all carboxylic acids are deprotonated to the largest extent (Table 1).

TABLE 1. Dissociation constants of the carboxylic acids used (from Lide, 1988).

Carboxylic acid moiety	pK _{a1}	pK _{a2}	pK _{a3}
Citric acid	3.13	4.76	6.40
Maleic acid	1.92	6.23	
Tartaric acid	3.03	4.34	

The delay in precipitation, indicated by the increased induction time, is probably due in part to Ca^{2+} complexation with these deprotonated species through the reduction of Ca^{2+} supersaturation. Of the carboxylic acids tested, citric acid at pH 7 is the most deprotonated and may, therefore, act as the most efficient inhibitor, as reflected in the longest induction time. Nevertheless, the nucleation barrier in the presence of all additives is overcome and bassanite nucleates and eventually transforms to gypsum. The delay in precipitation in the presence of the carboxylic acid may also be attributed to sorption onto bassanite and gypsum growth sites. Badens *et al.* (1999) and Ersen *et al.* (2006) found that adsorption of citrate onto active growth faces of both bassanite and gypsum inhibited growth in those directions more than other carboxylic acid (e.g. tartaric or malic). This suggests that with citric acid, both bassanite and gypsum grew with different habits from those in the pure CaSO_4 system, as the imaging data in the present study also confirmed (Fig. 4*a,b*). Citric acid seems to have inhibited growth along the *c* axis and prevented the formation of typical long, needle-like habits. Instead, the growth of gypsum was favoured in the *a* and *b* directions, leading to platy crystal habits (Fig. 4). Similar morphological changes in gypsum habits in the presence of carboxylic acids have been reported by others (Li *et al.*, 2007; Magallanes-Rivera *et al.*, 2009) but a molecular-level understanding of the process is still lacking.

For gypsum formed in the presence of citric acid, Prisciandaro *et al.* (2005) showed that the increase in induction time was due to a dramatic change in interfacial tension compared to an additive-free system. Although the present study confirmed these findings, bassanite was also shown to be a metastable intermediate forming prior to gypsum not just in the pure CaSO_4 system (Wang *et al.*, 2012; Van Driessche *et al.*, 2012) but also in the presence of carboxylic acids. In the pure system, bassanite forms below its thermodynamic bulk solubility and its transformation to gypsum is through hydration and self-assembly *via* a process controlled by a particle-size-dependent surface energy (Van Driessche *et al.*, 2012). This is different from non-classical nucleation, growth and dehydration pathways suggested for calcium carbonates (Rodríguez Blanco *et al.*, 2011; Bots *et al.*, 2012) or calcium phosphates (Combes and Rey, 2010). The current study shows, however, that in the

presence of even low concentrations of carboxylic acid: (1) the onset of the precipitation reaction is delayed; (2) bassanite is stabilized and its transformation to gypsum slowed; and (3) citric acid changes the shape and habit of the bassanite and gypsum formed.

If citric acid inhibitors are used in an industrial-fluid handling system (where CaSO_4 scale minerals are a problem) they can substantially retard nucleation and growth even at low concentrations. Importantly, citric acid may not just stabilize a nanoparticulate phase such as bassanite and thus reduce clogging of filters, but the size effect may also prevent adherence to pipe surfaces. However, this latter process and further growth of CaSO_4 phases on surfaces is still under study.

Acknowledgements

This study was supported by the Marie Curie grant from the European Commission in the framework of the MINSC ITN (Initial Training Research network), Project number 290040. The authors thank the Cohen Laboratories in the School of Earth and Environment, and the Leeds Electron Microscopy and Spectroscopy Centre (LEMAS) for help and access to instruments during the course of this study. They also thank three reviewers and the associate editor for their constructive comments, which helped to improve the paper.

References

- Akyol, E., Oner, M., Barouda, E. and Demadis, K.D. (2009) Systematic structural determinants of the effects of tetraphosphonates on gypsum crystallization. *Crystal Growth & Design*, **9**, 5145–5154.
- Amjad, Z. and Koutsoukos, P.G. (2014) Evaluation of maleic acid based polymers as scale inhibitors and dispersants for industrial water applications. *Desalination*, **335**, 55–63.
- Badens, E., Veessler, S. and Boistelle, R. (1999) Crystallization of gypsum from hemihydrate in presence of additives. *Journal of Crystal Growth*, **198**, 704–709.
- Bazin, H., Bouchu, A., Descotes, G. and Petit-Ramel, M. (1995) Comparison of calcium complexation of some carboxylic acids derived from D-glucose and D-fructose. *Canadian Journal of Chemistry*, **73**, 1338–1347.
- Bots, P., Rodríguez-Blanco, J.D., Roncal-Herrero, H., Shaw, S. and Benning, L. (2012) Mechanistic insights into the crystallization of amorphous

- calcium carbonate (ACC). *Crystal Growth & Design*, **12**, 3806–3814.
- Camarini, G. and De Milito, J.A. (2011) Gypsum hemihydrate–cement blends to improve renderings durability. *Construction and Building Materials*, **25**, 4121–4125.
- Cao, K., Zhou, Y., Liu, G., Wang, H. and Sun, W. (2014) Preparation and properties of a polyether-based polycarboxylate as an antiscalant for gypsum. *Journal of Applied Polymer Science*, **131**, 1–9.
- Combes, C. and Rey, C. (2010) Amorphous calcium phosphates: synthesis, properties and uses in biomaterials. *Acta Biomaterialia*, **6**, 3362–3378.
- Crabtree, M., Slinger, D., Fletcher, P., Miller, M., Johnson, A. and King, G. (1999) Fighting scale – removal and prevention. *Oilfield Review*, **11**, 30–45.
- Ersen, A., Smith, A. and Chotard, T. (2006) Effect of malic and citric acid on the crystallisation of gypsum investigated by coupled acoustic emission and electrical conductivity techniques. *Journal of Materials Science*, **41**, 7210–7217.
- Freyer, D. and Voigt, W. (2003) Crystallization and phase stability of CaSO₄ and CaSO₄-based salts. *Monatshefte für Chemie/Chemical Monthly*, **134**, 693–719.
- Guan, B., Yang, L. and Wu, Z. (2010) Effect of Mg²⁺ ions on the nucleation kinetics of calcium sulfate in concentrated calcium chloride solutions. *Industrial & Engineering Chemistry Research*, **49**, 5569–5574.
- Hasson, D., Shemer, H. and Sher, A. (2011) State of the art of friendly “Green” scale control inhibitors: a review article. *Industrial & Engineering Chemistry Research*, **50**, 7601–7607.
- Kinsman, D.J. (1969) Modes of formation, sedimentary associations and diagnostic features of shallow-water and supratidal evaporites. *The American Association of Petroleum Geologists Bulletin*, **53**, 830–840.
- Li, J., Li, G. and Yu, Y. (2007) The influences of gypsum water-proofing additive on gypsum crystal growth. *Materials Letters*, **61**, 872–876.
- Lide, D.R., editor (1988) *CRC Handbook of Chemistry and Physics*. CRC Press, Boca Raton, Florida, USA, **88**, chapter 8, p. 49.
- Ling, L., Zhou, Y., Huang, J., Yao, Q., Liu, G., Zhang, P., Sun, W. and Wu, W. (2012) Carboxylate-terminated double-hydrophilic block copolymer as an effective and environmental inhibitor in cooling water systems. *Desalination*, **304**, 33–40.
- Magallanes-Rivera, R.X., Escalante-Garcia, J.I. and Gorokhovskiy, A. (2009) Hydration reactions and microstructural characteristics of hemihydrate with citric and malic acid. *Construction and Building Materials*, **23**, 1298–1305.
- Mi, B. and Elimelech, M. (2010) Gypsum scaling and cleaning in forward osmosis: measurements and mechanisms. *Environmental Science & Technology*, **44**, 2022–2028.
- Moghadasi, J., Sharif, A., Müller-Steinhagen, H. and Jamialahmadi, M. (2006) Prediction of scale formation problems in oil reservoirs and production equipment due to injection of incompatible waters. *Developments in Chemical Engineering and Mineral Processing*, **14**, 545–566.
- Parkhurst, D.L. and Appelo, C.A.J. (1999) User’s guide to PHREEQC (Version 2): A computer program for speciation, batch-reaction, one-dimensional transport, and inverse geochemical calculations. US Geological Survey Water Resource Investigation. Report 99-4259, 312 pp.
- Prisciandaro, M., Santucci, A., Lancia, A. and Musmarra, D. (2005) Role of citric acid in delaying gypsum precipitation. *The Canadian Journal of Chemical Engineering*, **83**, 586–592.
- Rahardianto, A., Mccool, C.B. and Cohen, Y. (2008) Reverse osmosis desalting of inland brackish water of high gypsum scaling propensity: kinetics and mitigation of membrane mineral scaling. *Environmental Science & Technology*, **42**, 4292–4297.
- Rodriguez-Blanco, J.D., Shaw, S. and Benning, L.G. (2011) The kinetics and mechanisms of amorphous calcium carbonate (ACC) crystallization to calcite, via vaterite. *Nanoscale*, **3**, 265–271.
- Senthilmurugan, B., Ghosh, B., Kundu, S.S., Haroun, M. and Kameshwari, B. (2010) Maleic acid based scale inhibitors for calcium sulfate scale inhibition in high temperature application. *Journal of Petroleum Science and Engineering*, **75**, 189–195.
- Shakkthivel, P. and Vasudevan, T. (2006) Acrylic acid-diphenylamine sulphonate copolymer threshold inhibitor for sulphate and carbonate scales in cooling water systems. *Desalination*, **197**, 179–189.
- Van Driessche, A.E.S., Benning, L.G., Rodriguez-Blanco, J.D., Ossorio, M., Bots, P. and Garcia-Ruiz, J.M. (2012) The role and implications of bassanite as a stable precursor phase to gypsum precipitation. *Science*, **336**, 69–72.
- Wang, Y.W., Kim, Y.Y., Christenson, H.K. and Meldrum, F.C. (2012) A new precipitation pathway for calcium sulfate dihydrate (gypsum) via amorphous and hemihydrate intermediates. *Chemical Communications*, **48**, 504–506.
- Wang, Y.W., Christenson, H.K. and Meldrum, F.C. (2013) Confinement leads to control over calcium sulfate polymorph. *Advanced Functional Materials*, **23**, 5615–5623.