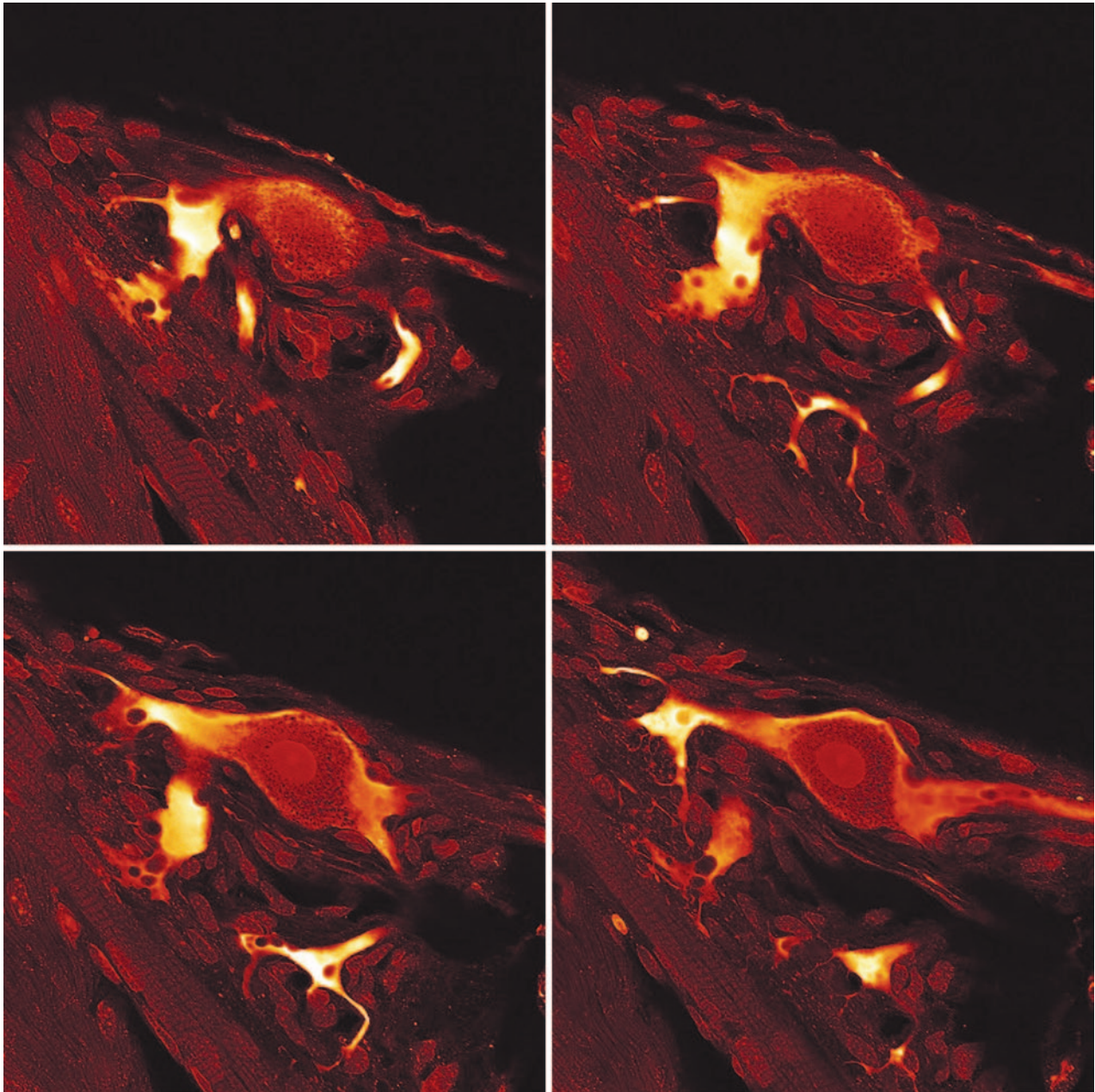


Microscopy TODAY

Volume 20 Number 4 2012 July



The New Dimension in Electron Microscopy

The Hitachi SU3500 Scanning Electron Microscope

The all new SU3500 SEM features innovative electron optics and signal detection systems affording unparalleled imaging and analytical performance. Designed with intuitive logic, the new user-friendly GUI provides comprehensive image observation and display functions. Engineered for a wide range of applications, including biological specimens and advanced materials, the SU3500 is the new workhorse microscope in any laboratory.



Unparalleled Image Quality

All new electron optics design with best-in-class image sharpness.

Intuitive Operation

Wide-screen GUI and fast auto image optimization functions (7 seconds) via "delegation" technology.

Ultra Variable-Pressure Detector

Image surface information at low accelerating voltages and low vacuum.

Stereoscopic Image Function

Point and click for seamless, real-time "3D" image observation.

*Click or call to learn about
our new 3-year warranty
promotion for select SEM
and TEM models!**

Hitachi—The Reliability Leader in Electron Microscopy

* Offer valid in the United States only. Requires acceptance of additional Terms & Conditions. Hitachi High Technologies America reserves the right to terminate or modify this warranty promotion at any time. Contact us for details.

Hitachi High Technologies America, Inc.
toll free: 800-548-9001 (US & Canada)
email: Sales-LS@hitachi-hita.com

www.hitachi-hita.com/su3500

HITACHI
Inspire the Next



M&M 2012

MICROSCOPY & MICROANALYSIS

July 29 – August 2 • Phoenix, AZ

REGISTER NOW

Online registration now open.
Register by June 15 and save \$100!

BOOK YOUR HOTEL

Online reservations & special rates available!
All M&M hotels include internet in the rate. Must book through M&M.

Visit <http://microscopy.org/MandM/2012> for:

- Full Program & Symposia Details
(conference schedule available after April 15)
- Meeting Schedule & Information
- Online Registration Portal
- Online Hotel Reservations Portal
- Social Event Information
- Late-Breaking Poster Submission information



International
Metallographic
Society, Inc.
An Affiliate Society of ASM International

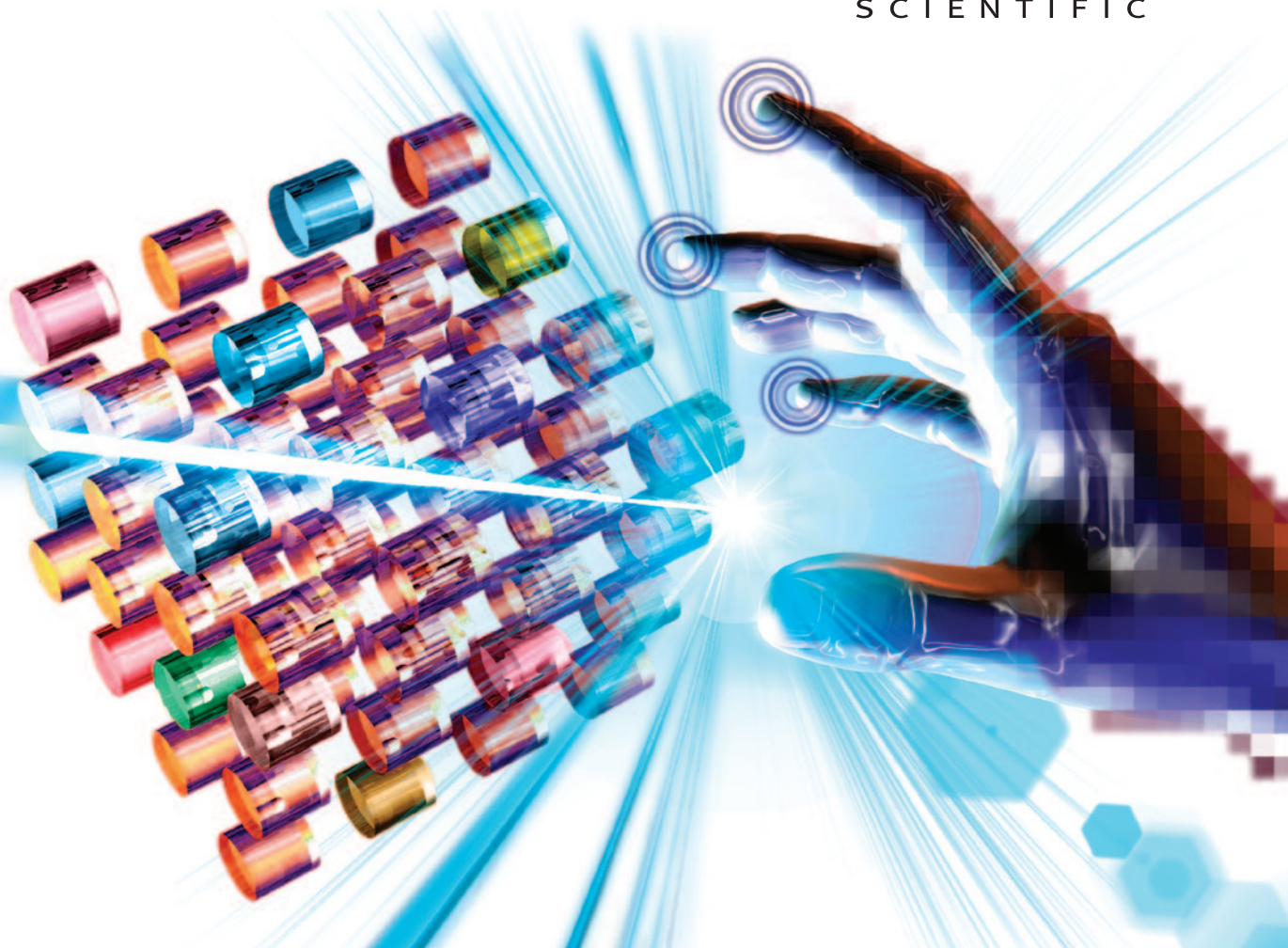
True system integration.

Electron microscopy laboratories seek maximum productivity and accuracy from microanalysis. Systems need to be intuitive, easy to use and eliminate operator bias. Our long history of innovation has led to the first truly integrated microanalysis system, providing the optimal combination of **EBSD, WDS and EDS detectors**, software and electronics. Collect large amounts of data in the shortest amount of time. Identify phases confidently with a minimum amount of spectra. Move seamlessly through your analysis with one common interface.

Fast. Easy. Precise. Microanalysis.

• driving bold progress in spectroscopy • www.thermoscientific.com/microanalysis

Thermo
SCIENTIFIC



Contents

Light Microscopy

- 12 Two-Photon Microscopy for Deep Tissue Imaging of Living Specimens**
Tilman Franke and Sebastian Rhode
- 18 Live Cell Super-Resolution Imaging with N-SIM**
Christopher B. O'Connell
- 22 Fluorescence Microscopy Light Sources**
Kavita Aswani, Tushare Jinadasa, and Claire M. Brown

Microanalysis

- 30 Atomic-Level EELS Mapping Using High-Energy Edges in DualEELS™ Mode**
Paolo Longo, Paul J. Thomas, and Ray D. Twisten
- 38 Practical X-ray Spectrometry with Second-Generation Microcalorimeter Detectors**
Robin Cantor and Hideo Naito
- 44 New Insights into the Atomic-Scale Structures and Behavior of Steels**
E. A. Marquis, P.-Pa Choi, F. Danoix, K. Kruska, S. Lozano-Perez, D. Ponge, D. Raabe, and C. A. Williams

Microscopy Pioneers

- 50 Pioneers in Optics: William Rowan Hamilton and John Kerr**
Michael W. Davidson

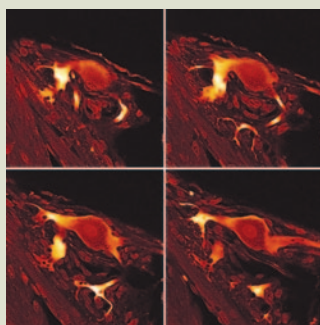
Platform Transcripts

- 54 Equipment Funding Opportunities and Strategies for Success (Part 1)**
Debby Sherman

Departments

- 7 Editorial**
- 8 Carmichael's Concise Review**
- 58 Industry News**
- 60 Product News**
- 62 NetNotes**
- 78 Calendar of Meetings**
- 81 Dear Abbe**
- 82 Index to Advertisers**

About the Cover



Crayfish tail muscle stretch receptor neuron, FITC-immunostained for tubulin. Four optical sections 5 μm apart. Image width = 280 μm .

See article by Franke and Rhode.



Cooling Stages

Recirculating Heaters
and Chillers

Sputter Coaters

SEM/TEM Carbon Coaters

Vacuum Evaporators

Glow Discharge Systems

RF Plasma Etchers/
Plasma Reactors

Critical Point Dryers

Freeze Dryers

Cryo-SEM Preparation
Systems

Vacuum Pumps & Accessories

Evaporation Supplies

and more...

well equipped...

Electron Microscopy Sciences is pleased to announce our new full line catalog, your comprehensive source for high-end Vacuum Equipment. EMS is committed to providing the highest quality products along with competitive pricing, prompt delivery and outstanding customer service.



and more...

Not just Vacuum Equipment, EMS also offers:

Laboratory Microwave Ovens • Automated Tissue Processors • Oscillating Tissue Slicers • Vibrating Microtomes • Rapid Immersion Freezers • Tissue Choppers • Desiccators and Desiccants • Centrifuges, Tubes, and Racks • Stirrers, Stirring Hotplates, and Digital Hotplates • Stirring Bars, Stirring Rods, and Hand Mixers • Vortex Mixers, Microplate Mixers, and Magnetic Stirrers • Tissue Rotators, Mixer Vortexes, and Rotator/Rockers • Dri Baths • Oven/Incubators • Cooling Chambers • Ultraviolet Lamps • Lab Jacks

For catalog requests, please visit our website at www.emsdiasum.com



**Electron
Microscopy
Sciences**

Electron Microscopy Sciences
P.O. Box 550 • 1560 Industry Rd. • Hatfield, Pa 19440
Tel: (215) 412-8400 • Fax: (215) 412-8450
email: sgkcck@aol.com • www.emsdiasum.com