

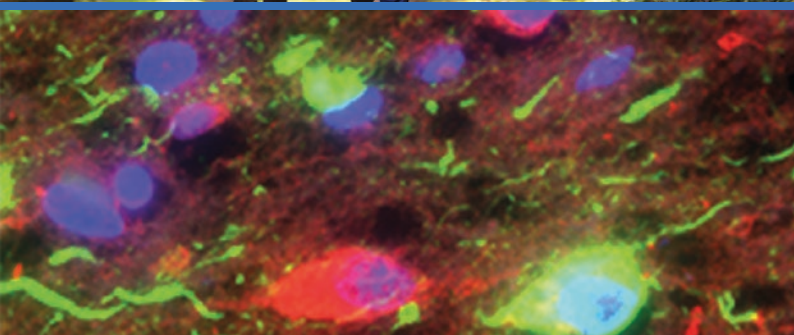
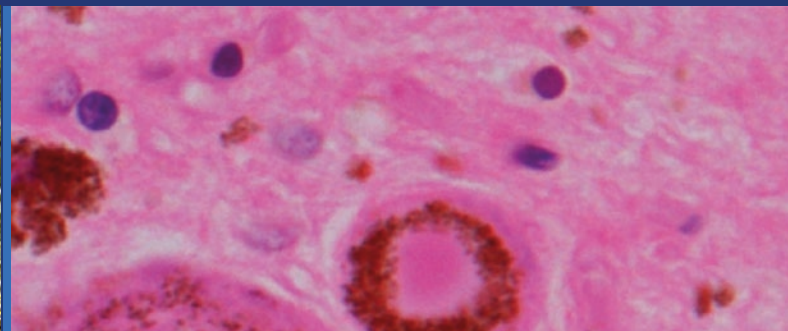
# International Psychogeriatrics

[journals.cambridge.org/ipg](https://journals.cambridge.org/ipg)



The Official Journal of the  
International Psychogeriatric Association  
*Better Mental Health for Older People*

Issue Theme: Loneliness and Social Connectedness



**CAMBRIDGE**  
UNIVERSITY PRESS

# International Psychogeriatrics



## Editorial Panel

### EDITOR-IN-CHIEF

**Dilip V. Jeste**  
*San Diego, CA, USA*

### DEPUTY EDITORS

**Liat Ayalon**  
*Ramat Gan, Israel*

**Ana Luisa Sosa-Ortiz**  
*Mexico City, Mexico*

**Huali Wang**  
*Beijing, China*

### STATISTICAL EDITOR

**Stephan Arndt**  
*Iowa City, IA, USA*

### EDITORIAL BOARD

**Awais Aftab**  
*La Jolla, CA, USA*

**Shabbir Amanullah**  
*London, ON, Canada*

**Helen Chiu**  
*Hong Kong, China*

**Yeates Conwell**  
*Rochester, NY, USA*

**Migita Dcruz**  
*Bangalore, India*

**Devangere P. Devanand**  
*New York, NY, USA*

**Martin Dichter**  
*Witten, Germany*

**Alastair J. Flint**  
*Toronto, ON, Canada*

**Orestes Forlenza**  
*Sao Paulo, Brazil*

**Debby J. Gerritsen**  
*Nijmegen, The Netherlands*

**Clarissa Giebel**  
*Liverpool, UK*

**Martin Haupt**  
*Düsseldorf, Germany*

**Dimitris Kiosses**  
*White Plains, NY, USA*

**Rob Kok**  
*The Hague, The Netherlands*

**Maria Lapid**  
*Rochester, MN, USA*

**Helen Lavretsky**  
*Los Angeles, CA, USA*

**Ellen Lee**  
*San Diego, CA, USA*

**Iracema Leroi**  
*Manchester, UK*

**Raimundo Mateos**  
*Santiago de Compostela, Spain*

**Kirsten Moore**  
*London, UK*

**Benoit Mulsant**  
*Toronto, ON, Canada*

**Cynthia Munro**  
*Baltimore, MD, USA*

**Ruth O'Hara**  
*Stanford, CA, USA*

**Nancy A. Pachana**  
*Brisbane, QLD, Australia*

**Barton W. Palmer**  
*La Jolla, CA, USA*

**Bruce Pollock**  
*Toronto, ON, Canada*

**Kiran Rabheru**  
*Ottawa, ON, Canada*

**Mark Rapoport**  
*Toronto, ON, Canada*

**Perminder Sachdev**  
*Randwick, NSW, Australia*

**Ingmar Skoog**  
*Gothenburg, Sweden*

**Olga Theou**  
*Halifax, NS, Canada*

**John Torous**  
*Boston, MA, USA*

**Vihang Vahia**  
*Mumbai, India*

**Ryan Van Patten**  
*Boston, MA, USA*

**Perla Werner**  
*Hatifa, Israel*

### MANAGING EDITOR

**Kate Filipiak**  
*Milwaukee, WI, USA*

### FOUNDER EDITOR

**Gene Cohen**  
*Deceased*

### EDITOR EMERITUS

**Robin Eastwood**  
*Bere Ferrers, UK*

### PAST EDITORS

**Gene Cohen**  
**Robin Eastwood**  
**David Ames**  
**Nicola Lautenschlager**

### EDITORIAL OFFICE MANAGER

**Elaine Halls**  
*London, UK*

## Subscriptions

*International Psychogeriatrics* (ISSN 1041-6102) is published monthly. The annual subscription price (excluding VAT), including delivery by air where appropriate, plus electronic access for subscribers of Volume 33 is £860 for institutions (US\$1591 in the USA, Canada and Mexico); the electronic only price available to institutional subscribers is £641 (US\$1188 in the USA, Canada and Mexico). For individuals ordering direct from the publisher and certifying that the journal is for their personal use the subscription price (excluding VAT) for print plus electronic access is £362 (US\$668 in the USA, Canada and Mexico) or £283 (US\$525 in the USA, Canada and Mexico) for electronic only subscriptions. Single issues are £82 (US\$152 in the USA, Canada and Mexico) plus postage. Orders, which must be accompanied by payment, may be sent to a bookseller, subscription agent or to the publisher: Cambridge University Press, Journals Fulfillment Department, UPH, Shaftesbury Road, Cambridge CB2 8BS, UK; or in the USA, Canada and Mexico: Cambridge University Press, Journals Fulfillment Department, 1 Liberty Plaza, Floor 20, New York, NY 10006, USA. EU subscribers (outside the UK) who are not registered for VAT should add VAT at their country's rate. VAT registered subscribers should provide their VAT registration number. Japanese prices for institutions are available from: Kinokuniya Company Ltd, PO Box 55, Chitose, Tokyo 156, Japan. Periodicals postage paid at New York, NY, and at additional mailing offices. POSTMASTER: send address changes in USA, Canada and Mexico to: *International Psychogeriatrics*, Cambridge University Press, Journals Fulfillment Department, 1 Liberty Plaza, Floor 20, New York, NY 10006, USA. Claims for missing issues should be made immediately on receipt of the subsequent issue.

## Internet access

This journal is included in the Cambridge Core service which can be found at [journals.cambridge.org/ipg](http://journals.cambridge.org/ipg). For further information on other Press titles go to <http://www.cambridge.org>.

## Abstracts

*International Psychogeriatrics* is abstracted and indexed in *Abstracts in Social Gerontology*; *Current Literature on Aging*; *AgeLine*; *Combined Health Information Database (CHID)*; *Cumulative Index to Nursing & Allied Health Literature (CINAHL)*; *Current Contents/Social and Behavioral Sciences*; *EMBASE/Excerpta Medica*; *e-psyche*; *Index Medicus/MEDLINE*; *ISI Alerting Services*; *Mental Health Abstracts*; *New Literature on Old Age*; *PsychINFO*; *PsychLIT*; *Psychological Abstracts*; *PubMed*; *Social Sciences Citation Index*; *Social Services Abstracts*; *Social Work Abstracts*; *Sociedad Iberoamericana de Información Científica (SIC) Data Bases*; *SciSearch* and *Zeitschriftenbibliographie Gerontologie (GeroLIT)*.

## Copying

This journal is registered with the Copyright Clearance Center, 222 Rosewood Drive, Danvers, MA 01923, USA. Organizations in the USA who are also registered with CCC may therefore photocopy material (beyond the limits permitted by sections 107 and 108 of US Copyright Law) subject to payment to CCC of the per-copy fee of \$16.00. This consent does not extend to multiple copying for promotional purposes. Code 1041-6102/2017. ISI Tear Sheet Service, 3501 Market Street, Philadelphia, PA 19104, USA, is authorized to supply single copies of separate articles for private use only. Organizations authorized by the UK Copyright Licensing Agency may also photocopy material subject to the usual conditions. For all other use, permission should be sought from Cambridge or the American Branch of Cambridge University Press. No other part of this publication may be reproduced, stored or distributed by any means without permission in writing from Cambridge University Press, acting for the copyright holder.

## Acknowledgement

(Upper left) Seniors jogging on a forest road © Kzenon /istockphoto; (Upper right) A Lewy body in a pigmented neuron of the substantia nigra of a Parkinson's disease patient (H/E stain) and (Lower left) tau pathology (green) in the hippocampus of an Alzheimer's disease patient (immunofluorescence) – both images kindly provided by Prof. Johannes Attems, Institute for Ageing and Health, Newcastle University, UK; (Lower right) Senior adults having morning tea together © Monkeybusinessimages /istockphoto