

The *Principles of Archaeological Ethics* poster. This attractive, 22 1/2" x 17 1/2", laminated, blue and gold poster of the Principles of Archaeological Ethics adopted by the SAA. Culminating five years of discussion and comment, these principles reflect the changing face of archaeology. Having these Eight Principles in poster form provides an opportunity for you to bring them to everyone's attention. Be sure to get one for the Department or the business office, and display it prominently in your Lab and in your classroom. \$4.95 plus \$5.00 Shipping & Handling. Check, Visa, Mastercard accepted. Send to: Ethics Poster, SAA Office, 900 Second Street Suite 12, Washington DC 20002. Questions? 202/789-8200 bette_fawley@saa.org

LATIN AMERICAN ANTIQUITY

VOLUME 12 NUMBER 2 JUNE 2001

ARTICLES

- 127 A Calendrical and Demographic Tomb Text from Northern Peru
Gary Urton
- 149 Paleocological Evidence of an Early Postclassic Occupation in the Southwestern Maya Lowlands: Laguna Las Pozas, Guatemala
Kevin J. Johnston, Andrew J. Breckenridge, and Barbara Hansen
- 167 Alfarería temprana en sitios de cazadores—recolectores de la región pampeana (Argentina)
Gustavo G. Politis, Gustavo A. Martínez y Mariano Bonomo

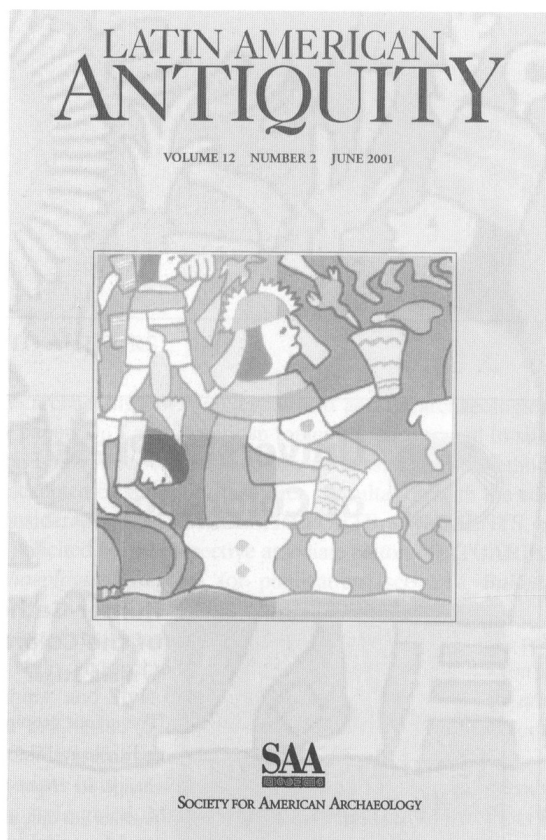
REPORTS

- 182 The Chronology of Conquest: Implications of New Radiocarbon Analyses from the Cañada de Cuicatlán, Oaxaca
Charles S. Spencer and Elsa M. Redmond
- 203 La deformación artificial en el período Arcáico de Arica
José A. Cocilovo y María Costa-Junqueira

REVIEWS AND BOOK NOTES

Book Review Essays

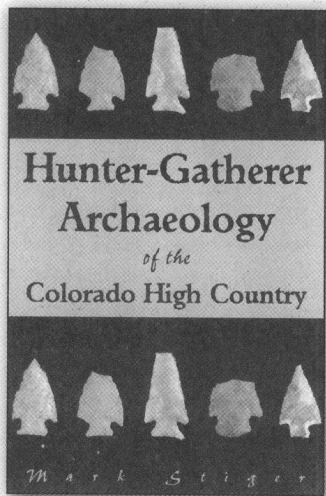
- 215 Voices from the Aztec Periphery
Frances F. Berdan
- El Códice de Xicotepec: Estudio e interpretación, by Guy Stresser-Péan
 - Los lienzos de Acaxochitlan (Hidalgo) y su importancia en la historia del poblamiento de la Sierra Norte de Puebla y zonas vecinas, by Guy Stresser-Péan
- 217 Ancient Economy and Alternative Approaches to Stone Tools at Copán, Honduras
Geoffrey E. Braswell
- Ancient Maya State, Urbanism, Exchange, and Craft Specialization: Chipped Stone Evidence from the Copán Valley and the La Entrada Region, Honduras / Estado, urbanismo, intercambio, y especialización artesanal entre los Mayas antiguos: Evidencia de lítica menor del Valle de Copán y la Región de La Entrada, Honduras, by Kazuo Aoyana





**University Press
of Colorado**

ORDERS C/O 4100 28TH AVE. NW • NORMAN, OK 73069-8218
PH: (800) 627-7377, (405) 325-2000
FAX: (800) 735-0476, (405) 364-5798
ALL OTHER INQUIRIES, PHONE (720) 406-8849



**Hunter-Gatherer Archaeology
of the Colorado High Country**

By **Mark Stiger**

The unique geophysics of Colorado's Upper Gunnison Basin provides a rich archaeological document of over 8,000 years of environmental and cultural change. In *Hunter-Gatherer Archaeology of the Colorado High Country*, Mark Stiger presents not only an overview of past research conducted in the Basin but also the significant new findings and interpretations from his own research. The artifactual data from Tenderfoot and related sites show how cultural change was reflected in the houses, game drives, firepits, stone tools, and debitage over 8,000 years. Using this information, Stiger explains the cultural sequence found in the Upper Gunnison Basin and probes its connections to cultural changes in the American Southwest and West. Ultimately, he proposes the application of non-traditional theoretical and methodological approaches derived from his own work to more universal problems of archaeological research.

\$55.00 HARDCOVER

NOTICE TO AUTHORS

American Antiquity publishes original papers on the archaeology of the New World and on archaeological method, theory, and practice worldwide. Authors of papers on Latin American topics are encouraged to submit their work to *Latin American Antiquity*. Papers on Latin American archaeology addressing broad methodological, theoretical, or comparative issues may be accepted by either journal after consultation with the editors. Authors submit manuscripts to the editor for consideration as ARTICLES, REPORTS, COMMENTS, or FORUM essays. REVIEWS and BOOK NOTES are solicited by the respective associate editor. OBITUARIES should be submitted to the editor, *The SAA Archaeological Record*, for publication (see *SAA Bulletin* March/April 1996, p. 7, for further details).

Authors should submit an original and four copies of their manuscripts, including all figures, tables, references, and notes. Detailed information on policy, style, and technical matters of manuscript preparation is given in the "Editorial Policy, Information for Authors, and Style Guide for *American Antiquity* and *Latin American Antiquity*," which appeared in the October 1992 issue (57:749–770) and can be read on the World Wide Web at <http://www.saa.org/Publications/StyleGuide/styframe.html>.

The editor reserves the right to evaluate manuscripts (with or without peer review) for appropriate subject matter, quality, length, and compliance with the style guide. Manuscripts may be returned to authors if they fail to meet expectations or conform to these guidelines. Manuscripts are evaluated by the editor in consultation with peer referees, as appropriate. The editor has the final responsibility for all decisions regarding manuscripts. The review process generally takes a minimum of two to four months. Authors will be notified as soon as a decision is reached to accept (outright or with revisions) or reject a manuscript.

To ensure the prompt receipt and handling of manuscripts, please send them to the editor-designate: Timothy A. Kohler, Department of Anthropology, Washington State University, Pullman, WA 99164-4910. Inquiries regarding the style guide and the production of the journal should be directed to: John Neirkirk, Society for American Archaeology, 900 Second Street, N.E., Suite 12, Washington, DC 20002-3557.

ARTICLES

- 387 Was Agriculture Impossible during the Pleistocene but Mandatory during the Holocene? A Climate Change Hypothesis
Peter J. Richerson, Robert Boyd, and Robert L. Bettinger
- 413 Shellfish Feeders, Carrion Eaters, and the Archaeology of Aquatic Adaptations
Jon M. Erlandson and Madonna L. Moss
- 433 Ritual and Mound Formation during the Bonito Phase in Chaco Canyon
W. H. Wills

REPORTS

- 453 Interpreting Variability in Thule Inuit Architecture: A Case Study from the Canadian High Arctic
Peter C. Dawson
- 471 Mass Spectrometric Radiocarbon Dates from Three Rock Paintings of Known Age
Ruth A. Armitage, James E. Brady, Allan Cobb, John R. Southon, and Marvin W. Rowe
- 481 AMS Radiocarbon Dates for Charcoal from Three Missouri Pictographs and Their Associated Iconography
Carol Diaz-Granados, Marvin W. Rowe, Marian Hyman, James R. Duncan, and John R. Southon
- 493 Techniques for Assessing Standardization in Artifact Assemblages: Can We Scale Material Variability?
Jelmer W. Eerkens and Robert L. Bettinger

COMMENTS

- 505 Culture and Agriculture: A Comment on Sissel Schroeder, Maize Productivity in the Eastern Woodlands, and Great Plains of North America
William M. Baden and Christopher S. Beekman
- 517 Understanding Variation in Prehistoric Agricultural Productivity: The Importance of Distinguishing among Potential, Available, and Consumptive Yields
Sissel Schroeder
- 526 How Many Frogs Does It Take to Leap around the Americas? Comments on Anderson and Gillam
John H. Moore and Michael E. Moseley
- 530 Paleoindian Interaction and Mating Networks: Reply to Moore and Moseley
David G. Anderson and J. Christopher Gillam

REVIEWS AND BOOK NOTES

On the cover: The Poverty Point site in Louisiana, from *The Poverty Point Culture* by Clarence H. Webb, vol. 17 in the series *Geoscience and Man*, published by Louisiana State University (inset), and from a site plan in *Prehistoric Architecture in the Eastern United States* by William N. Morgan, published by MIT Press (background).

∞ The paper used in this publication meets the requirements of ANSI/NISO Z39.48-1992 (Permanence of Paper).