
List of contributors

Åsa Berggren has been working in developer-funded archaeology in Scania in Sweden for the past 17 years. She defended her Ph.D. on the topic of wetland depositions and the concepts of sacrifice and ritual in 2010 at Lund University. She is currently working on research in connection with the Çatalhöyük Research Project concerning the production of knowledge in archaeological field practice.

John Chapman has been a Reader in Archaeology at Durham University since 1996. His research interests include archaeological theory, landscape, place and settlement, mortuary studies, the deliberate fragmentation of bodies and objects, and the aesthetics of colour and brilliance. He has worked in the Mesolithic, Neolithic and Copper Age of south-east Europe and codirected major field projects in Neothermal Dalmatia (now Croatia) and the Upper Tisza Project (Hungary). His current fieldwork in Ukraine targets the Tripolye mega-sites, the largest settlements in 4th-millennium Europe.

David Fontijn is Associate Professor in European Archaeology at the Faculty of Archaeology, University of Leiden, the Netherlands. His research focuses on the European Bronze Age and Early Iron Age, in particular the exchange and deposition of metalwork, and on the archaeology of so-called ‘ritual’ landscapes. He is the author of the award-winning book *Sacrificial landscapes*. Recent books are *Living near the dead* (2010) and *Iron Age echoes* (co-edited 2011). He was senior research fellow in the excellence cluster ‘TOPOI’ in Berlin, and currently leads an NWO-funded multidisciplinary project entitled Ancestral Mounds, dealing with the archaeology of prehistoric burial mounds.

Duncan Garrow is a Lecturer in Archaeology at the University of Liverpool. His research interests include the later prehistory of Britain and north-west Europe, the Mesolithic–Neolithic transition, long-term histories of deposition, the integration of developer-funded and university-based archaeology, archaeological theory and interdisciplinary approaches to material culture. His book *Technologies of enchantment? Exploring Celtic art: 400 BC to AD 100* (co-authored with Chris Gosden) came out in August 2012.

Svend Hansen is the Director of the Eurasia Department of the German Archaeological Institute and Honorary Professor for Prehistoric Archaeology at the Freie Universität in Berlin. His research on mainly the Neolithic and the Bronze Age has a social-archaeology focus, with a specific interest in the circumstances of technological innovations and prehistoric technology. He has recently conducted extensive excavations at Neolithic and Copper Age sites in Romania and Georgia. He is member of the Forging Identities: The Mobility of Culture in Bronze Age Europe network of the European

Commission, where he explores the topic of Bronze Age hoards as indicators of ‘other places’.

Nick Shepherd is Associate Professor of African Studies and Archaeology at the University of Cape Town, and is Head of the African Studies Unit. He is joint Editor-in-Chief of the journal *Archaeologies. Journal of the World Archaeological Congress*. In 2004–5 he was based at Harvard University as a Mandela Fellow. He was a Visiting Professor at Brown University in 2008, and at the University of Basel in 2009. He has published widely on questions of archaeology and society in Africa, and on questions of public history, memory and heritage. His books include *Desire lines. Space, memory and identity in the postapartheid city* (2007, with Martin Hall and Noeleen Murray), and *New South African keywords* (2008, with Steven Robins).

Julian Thomas is Professor of Archaeology at the University of Manchester. His research interests lie in the Neolithic of Britain and Europe, and the theory and philosophy of archaeology. He is the author of *Understanding the Neolithic* (1999) and *Archaeology and modernity* (2004), and he has directed archaeological fieldwork in south-west Scotland, the Stonehenge area and Herefordshire.

Barbara L. Voss is Associate Professor of Anthropology at Stanford University, where she is affiliated with the Stanford Archaeology Center, feminist studies, urban studies, and Asian American studies. Her research focuses on the dynamics and outcomes of historical transnational encounters in the Americas, with a focus on the colonization of and immigration to California. Her publications include *Archaeologies of sexuality* (co-edited with Rob Schmidt, 2000), *The archaeology of ethnogenesis. Race and sexuality in colonial San Francisco* (2008) and *The archaeology of colonialism. Intimate encounters and sexual effects* (co-edited with El Casella, 2012).

CAMBRIDGE

OUTSTANDING SCHOLARSHIP FROM CAMBRIDGE

Ancient Central China

Rowan K. Flad
and Pochan Chen

Case Studies in Early Societies

\$99.00: Hb: 978-0-521-89900-0: 408 pp.
\$34.99: Pb: 978-0-521-72766-2

Ancient Glass

An Interdisciplinary Exploration

Julian Henderson

\$110.00: Hb: 978-1-107-00673-7: 436 pp.

Appropriating the Past

Philosophical Perspectives on
the Practice of Archaeology

*Edited by Geoffrey Scarre
and Robin Coningham*

\$99.00: Hb: 978-0-521-19606-2: 300 pp.
\$32.99: Pb: 978-0-521-12425-6

**Commerce and
Colonization in
the Mediterranean
Bronze Age**

Maria Eugenia Aubet

\$99.00: Hb: 978-0-521-51417-0: 350 pp.

**From Chieftom to State
in Early Ireland**

D. Blair Gibson

\$99.00: Hb: 978-1-107-01563-0: 350 pp.

**Iconographic Method in
New World Prehistory**

Vernon James Knight, Jr.

\$99.00: Hb: 978-1-107-02263-8: 214 pp.

Maize

Origin, Domestication,
and Its Role in the Development
of Culture

Duccio Bonavia

\$115.00: Hb: 978-1-107-02303-1: 570 pp.

**Stone Tools in the
Paleolithic and Neolithic
Near East**

A Guide

John J. Shea

\$99.00: Hb: 978-1-107-00698-0: 350 pp.

**The Archaeology of
Cyprus**

From Earliest Prehistory through
the Bronze Age

A. Bernard Knapp

Cambridge World Archaeology

\$99.00: Hb: 978-0-521-89782-2: 400 pp.
\$38.99: Pb: 978-0-521-72347-3

**The Archaeology of
Power and Politics in
Eurasia**

Regimes and Revolutions

Edited by

Charles W. Hartley,
G. Bike Yazicioglu, and
Adam T. Smith

\$99.00: Hb: 978-1-107-01652-1: 486 pp.

**The Meroitic Language
and Writing System**

Claude Rilly and
Alex de Voogt

\$105.00: Hb: 978-1-107-00866-3: 284 pp.

Now in Paperback...

The Life of the Longhouse
An Archaeology of Ethnicity

Peter Metcalf

\$54.00: Pb: 978-1-107-40756-5: 358 pp.

**The Lives of
Sumerian Sculpture**

An Archaeology of the Early
Dynastic Temple

Jean M. Evans

\$99.00: Hb: 978-1-107-01739-9: 322 pp.

**The Archaeology of Class
in Urban America**

Stephen A. Mrozowski

Cambridge Studies in Archaeology

\$39.99: Pb: 978-1-107-40763-3: 212 pp.

**Meaning and Identity in a
Greek Landscape**

An Archaeological Ethnography

Hamish Forbes

\$54.00: Pb: 978-1-107-41070-1: 460 pp.

**Monuments, Empires, and
Resistance**

The Araucanian Polity and
Ritual Narratives

Tom D. Dillehay

Cambridge Studies in Archaeology

\$53.99: Pb: 978-1-107-40774-9: 506 pp.

Lithic Technology

Measures of Production,
Use and Curation

Edited by

William Andrefsky, Jr.

\$39.99: Pb: 978-1-107-64663-6: 345 pp.

Prices subject to change.

www.cambridge.org/us
800.872.7423



CAMBRIDGE
UNIVERSITY PRESS

Ancient Mesoamerica

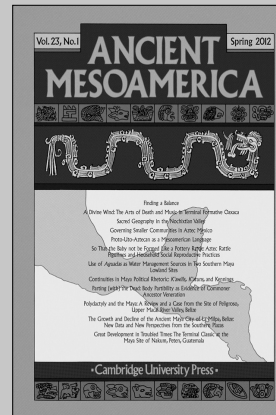
Editors

William R. Fowler, *Vanderbilt University, USA*

Kenneth G. Hirth, *Pennsylvania State University, USA*

Geoffrey G. McCafferty, *University of Calgary, Canada*

Ancient Mesoamerica is the international forum for the method, theory, substance and interpretation of Mesoamerican archaeology, art history and ethnohistory. The journal publishes papers chiefly concerned with the Pre-Columbian archaeology of the Mesoamerican region, but also features articles from other disciplines including ethnohistory, historical archaeology and ethnoarchaeology. Topics covered include the origins of agriculture, the economic base of city states and empires, political organisation from the Formative through the Early Colonial periods, the development and function of early writing, and the use of iconography to reconstruct ancient religious beliefs and practices.



Ancient Mesoamerica

is available online at:

<http://journals.cambridge.org/atm>

To subscribe contact Customer Services

Americas:

Phone +1 (845) 353 7500

Fax +1 (845) 353 4141

Email

subscriptions_newyork@cambridge.org

Rest of world:

Phone +44 (0)1223 326070

Fax +44 (0)1223 325150

Email journals@cambridge.org

Free email alerts

Keep up-to-date with new material – sign up at

journals.cambridge.org/register

For free online content visit:
<http://journals.cambridge.org/atm>



CAMBRIDGE
UNIVERSITY PRESS

Cambridge Archaeological Journal

Published for the McDonald Institute for Archaeological Research

Editor

John Robb, University of Cambridge, UK

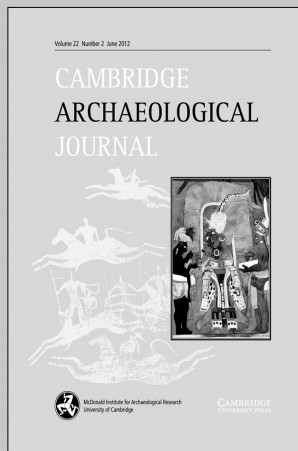
The *Cambridge Archaeological Journal (CAJ)* is the leading journal for cognitive and symbolic archaeology. It provides a forum for innovative archaeological research and theoretical discussion, with particular focus on the role and development of human symbolic capacities, beliefs and practices. Area coverage is world-wide, and *CAJ* covers the entire span from human origins to recent history. Specific topics covered in recent issues include: the use of cultural neurophenomenology for the understanding of Maya religious belief, agency and the individual, new approaches to rock art and shamanism, the significance of prehistoric monuments, ritual behaviour on Pacific Islands, and body metamorphosis in prehistoric boulder artworks. In addition to major articles and shorter notes, the *Cambridge Archaeological Journal* includes special topical sections and review features on significant recent books. The journal has a distinguished international editorial board of scholars of wide repute.

Price information

is available at: <http://journals.cambridge.org/caj>

Free email alerts

Keep up-to-date with new material – sign up at
<http://journals.cambridge.org/alerts>



Cambridge Archaeological Journal
is available online at:
<http://journals.cambridge.org/caj>

To subscribe contact Customer Services

in Cambridge:

Phone +44 (0)1223 326070

Fax +44 (0)1223 325150

Email journals@cambridge.org

in New York:

Phone +1 (845) 353 7500

Fax +1 (845) 353 4141

Email

subscriptions_newyork@cambridge.org

For free online content visit:
<http://journals.cambridge.org/caj>



CAMBRIDGE
UNIVERSITY PRESS

CAMBRIDGE

JOURNALS

The Classical Quarterly

Published for The Classical Association

Editors

Rhiannon Ash, Merton College, Oxford, UK

John Wilkins, University of Exeter, UK

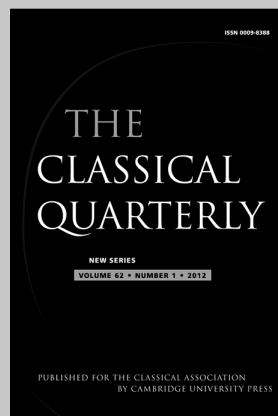
The Classical Quarterly has a reputation for publishing the highest quality classical scholarship for nearly 100 years. It publishes research papers and short notes in the fields of language, literature, history and philosophy. Two substantial issues (around 300 pages each) of *The Classical Quarterly* appear each year, in May and December. Given the quality and depth of the articles published in *The Classical Quarterly*, any serious classical library needs to have a copy on its shelves.

Price information

is available at: <http://journals.cambridge.org/caq>

Free email alerts

Keep up-to-date with new material – sign up at
<http://journals.cambridge.org/alerts>



Classical Quarterly is available online at:
<http://journals.cambridge.org/caq>

To subscribe contact Customer Services

in Cambridge:

Phone +44 (0)1223 326070
Fax +44 (0)1223 325150
Email journals@cambridge.org

in New York:

Phone +1 (845) 353 7500
Fax +1 (845) 353 4141
Email
subscriptions_newyork@cambridge.org

For free online content visit:
<http://journals.cambridge.org/caq>



CAMBRIDGE
UNIVERSITY PRESS

CAMBRIDGE

JOURNALS

The Classical Review

Published for The Classical Association

Editor

Neil Hopkinson, Trinity College, Cambridge, UK
Roger Rees, University of St Andrews, UK

The Classical Review publishes informative reviews from leading scholars on new work covering the literatures and civilizations of ancient Greece and Rome. Publishing over 300 high quality reviews and 100 brief notes every year, *The Classical Review* is an indispensable reference tool, essential for keeping abreast with current classical scholarship.

Price information

is available at: <http://journals.cambridge.org/car>

Free email alerts

Keep up-to-date with new material – sign up at
<http://journals.cambridge.org/alerts>



The Classical Review

is available online at:
<http://journals.cambridge.org/car>

To subscribe contact Customer Services

in Cambridge:

Phone +44 (0)1223 326070
Fax +44 (0)1223 325150
Email journals@cambridge.org

in New York:

Phone +1 (845) 353 7500
Fax +1 (845) 353 4141
Email
subscriptions_newyork@cambridge.org

For free online content visit:
<http://journals.cambridge.org/car>



CAMBRIDGE
UNIVERSITY PRESS

CAMBRIDGE

JOURNALS

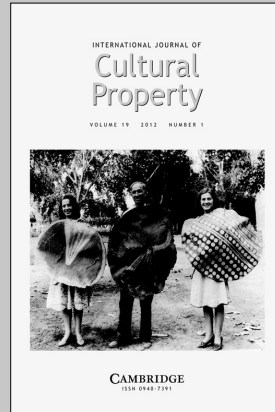
International Journal of Cultural Property

Published for the International Cultural Property Society

Editor

Alexander A. Bauer, *Queens College, CUNY, USA*

International Journal of Cultural Property provides a vital, international, and multidisciplinary forum for the broad spectrum of views surrounding cultural property, cultural heritage, and related issues. Its mission is to develop new ways of dealing with cultural property debates, to be a venue for the proposal or enumeration of pragmatic policy suggestions, and to be accessible to a wide audience of professionals, academics, and lay readers. This peer-reviewed journal publishes original research papers, case notes, documents of record, chronicles, conference reports, and book reviews. Contributions come from the wide variety of fields implicated in the debates -- law, anthropology, public policy, archaeology, art history, preservation, ethics, economics, museum-, tourism-, and heritage studies -- and from a variety of perspectives and interests -- indigenous, Western, and non-Western; academic, professional and amateur; consumers and producers -- to promote meaningful discussion of the complexities, competing values, and other concerns that form the environment within which these disputes exist.



International Journal of Cultural Property

is available online at:
<http://journals.cambridge.org/jcp>

To subscribe contact Customer Services

in Cambridge:

Phone +44 (0)1223 326070
Fax +44 (0)1223 325150
Email journals@cambridge.org

in New York:

Phone (845) 353 7500
Fax (845) 353 4141
Email
subscriptions_newyork@cambridge.org

Free email alerts

Keep up-to-date with new material – sign up at

journals.cambridge.org/register

For free online content visit:
<http://journals.cambridge.org/jcp>



CAMBRIDGE
UNIVERSITY PRESS

Guidelines for contributors

Archaeological dialogues is a broad, peer-reviewed journal for debating archaeology. Articles should be accessible to an audience which may be unfamiliar with the specific period and region discussed. Transparent writing is encouraged above abstruse reasoning. Jargon should be avoided and succinct writing is appreciated. We value good illustrations. These can include photographs, line-drawings and maps.

Procedure

The *Archaeological dialogues* publishing process includes the following steps: submission, evaluation, decision (acceptance, modification or rejection), copy-editing, proof-reading, publication, and distribution. In order to guarantee efficient and quality publication contributors are requested to adhere closely to the following guidelines:

- All manuscripts should be written in English. Manuscripts that seriously fail to conform to the guidelines will be returned to authors for revision before they will be considered.
- When submitting a contribution to *Archaeological dialogues*, it will be acknowledged on receipt. One of the editors will be the contact person for a paper throughout the entire process. If scope, quality and language are appropriate it will be sent to two anonymous referees for expert opinion. Usually within two or three months, the editors will inform you of their final decision. In the case of rejection, an editorial justification will be provided, including the original referees' reports. In the case of acceptance – which may be conditional on revisions – one of the editors will guide you through the rest of the publishing process. Before an article goes into print, authors will receive a copy of the proofs to check. The entire procedure between submission and appearance should take less than a year.

Types of contributions

Archaeological dialogues essentially publishes two types of papers, namely 'discussion articles' and 'notes'. The former are accompanied by published comments and a reply. Discussion articles are usually longer, they can be up to 8–9000 words whereas notes typically are around 4–5000 words. Discussion articles usually take longer to appear in print because of the time required for comments and reply. Review essays and interviews are usually solicited by the editorial board, but scholars with suggestions in this direction are encouraged to contact us.

Submission of contributions

Manuscripts are preferably received by email (dialogues@cambridge.org). Alternatively, a CD and hardcopy may be sent to: Archaeological Dialogues, c/o Jeremia Pelgrom, Koninklijk Nederlands Instituut Rome, Via Omero 10/12, 00197 ROMA, ITALY.

Authors are solely responsible not only for the contents of their manuscripts, but also for securing any legal rights or permissions to publish submitted material, including copyright-protected materials. The appropriate acknowledgements should be given in captions, endnotes, or elsewhere. Manuscripts should not be submitted to (nor should they have been published in) any other journal or publication.

See <http://uk.cambridge.org/journals/ard> for an extended version of the guidelines for contributors.

This journal issue has been printed on FSC-certified paper and cover board. FSC is an independent, non-governmental, not-for-profit organization established to promote the responsible management of the world's forests. Please see www.fsc.org for information.

Archaeological Dialogues is indexed in the Thomson Reuters Arts and Humanities Citation Index.

Printed in the UK by MPG Books Ltd.



Archaeological dialogues

discussion article

- 85 **Odd deposits and average practice. A critical history of the concept of structured deposition**
Duncan Garrow
- 116 The interpretation of depositions in pits. Is it time for the pendulum to swing back? *Åsa Berggren*
- 120 Meaningful but beyond words? Interpreting material culture patterning *David Fontijn*
- 124 Some deposits are more structured than others *Julian Thomas*
- 127 Deposition in the Bronze Age *Svend Hansen*
- 129 Structured deposition meets deliberate object fragmentation
John Chapman
- 133 Reply to responses *Duncan Garrow*

articles

- 145 Curation as research. A case study in orphaned and underreported archaeological collections *Barbara L. Voss*
- 171 The uncreated man. A story of archaeology and imagination
Nick Shepherd
- 195 List of Contributors

Cambridge Journals Online

For further information about this journal
please go to the journal website at:
journals.cambridge.org/ard



MIX
Paper from
responsible sources
FSC® C018575

CAMBRIDGE
UNIVERSITY PRESS