

PREHOSPITAL and DISASTER MEDICINE

Médecine Pré-Hospitalière et Médecine de Catastrophe

Volume 10, Number 3

July–September 1995

CJ SHANABERGER MEMORIAL ISSUE

Original Research

Analysis of Commercial Aircraft Crashes
Malaria Following a Disaster in Costa Rica
Impact of Trauma Time Intervals
Spirituality of Emergency Medical Technicians
Direct Medical Control

Special Reports

Data Collection Systems Following Earthquake
Incident Management System for Hospitals
Incorporating Drugs and Devices in EMS Systems

Brief Report

Mistaken Identity of EMS Workers

Case Report

Intrathoracic Injuries with Air Bag Use

Continuing Education

Tropical Cyclones

Abstracts

Ninth World Congress on Disaster and Emergency Medicine
Jerusalem, Israel
28 May–01 June 1995

The Official Journal of the
National Association of EMS Physicians and the
World Association for Disaster and Emergency Medicine
in association with the
National Association of State EMS Directors

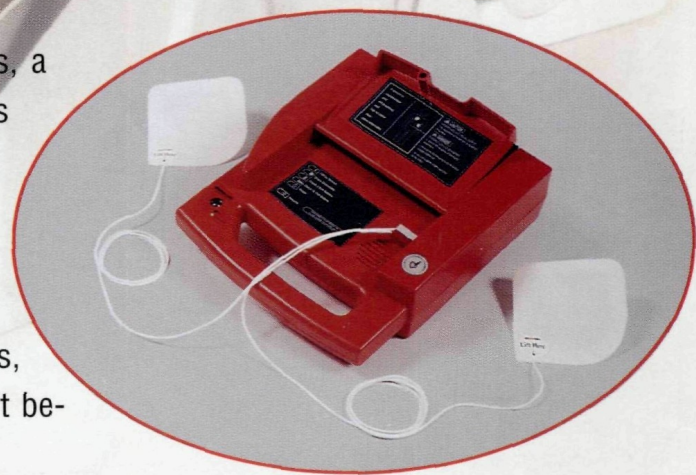
Published Quarterly by Jems Communications

VIVALink[®]AED **Now You Can Afford to be First.**

In the critical minutes after a crisis occurs, a first responder can drastically increase a victim's chance of survival.

How? Early defibrillation.

Priced to fit all budgets, the Vivalink[®]AED is simple to operate, lightweight and easily stored. At half the price of competing products, the VivalinkAED puts life-saving power where it belongs— in the hands of every first responder.



**For more information,
call 1-800-733-7751**

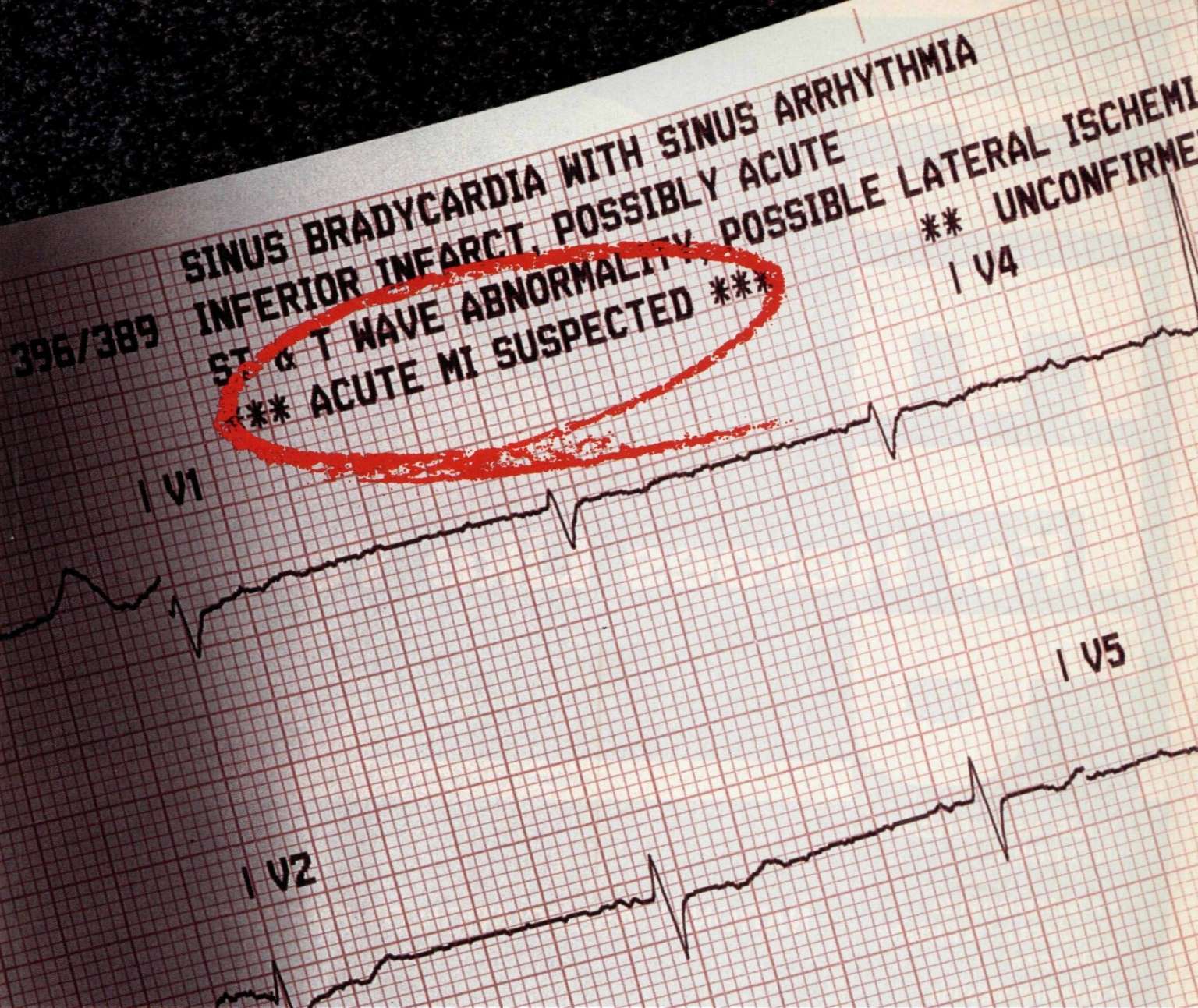
Distributed by

FERNO

Manufactured by

Survivalink
CORPORATIO

3057



THIS IS THE FUTURE

There's a new EMS standard. A more complete ECG. The LIFEPAK 11 diagnostic cardiac monitor brings state-of-the-art interpretive 12-lead electrocardiography to the rigorous environment of emergency medicine.

*The 11 has a unique ***ACUTE MI SUSPECTED*** message, which presents when the injury phase of a myocardial infarction is detected. This early warning system specifically designed and tested for acute MI detection enables shorter time to treatment—thereby*

increasing chances of a successful outcome.

Lifesaving products backed by worldclass customer support and technical service.

The LIFEPAK 11 diagnostic cardiac monitor. It's what you'd expect from the world leader in defibrillation and noninvasive pacing. Physio-Control.

Call 800-442-1142.



LIFEPAK[®] 11
diagnostic cardiac monitor

LIFESAVING TOOLS FOR LIFESAVING TEAMS™

USA Customer Support Center 800.442.1142, USA Fax 206.867.4146
Corporate Headquarters 206.867.4000, International Fax 206.885.6507

©1995 Physio-Control Corporation. PHYSIO-CONTROL and LIFEPAK are registered trademarks of Physio-Control Corporation.

The National Heart Attack Alert Program states "EMS systems should consider administering 12-lead ECGs to all patients with symptoms and signs of heart attack."

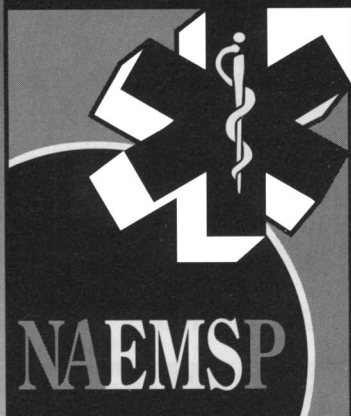
EMSP



For Heroes Like You

**YOUR MEMBERSHIP
INCLUDES:**

- A Subscription to *Prehospital & Disaster Medicine*
- Discount Meeting Programs
- Complimentary Bi-Monthly Newsletter
- Access to the EMS Database



The **NATIONAL ASSOCIATION OF EMS PHYSICIANS** encouraging and promoting career development, career longevity, and professional well-being of EMS professionals.

1 800 228 3677

We believe in helping those who help others.

Editor's Corner

A Memorium: A Tribute to Carol J. Shanaberger139
Marvin L. Birnbaum, MD, PhD, R. Jack Ayres, Jr., JD, REMT-P, Norm Dinerman, MD, Stewart L. Greisman, DO, FACEP

Original Research

A Comparative Analysis of the Emergency Medical Services and Rescue Responses to Eight Airliner Crashes in the United States, 1987–1991142
Paul B. Anderson

Post-Disaster Malaria in Costa Rica154
Ricio Sáenz, MD, MPH, Richard A. Bissell, PhD, Francisco Paniagua, MD

The Impact of Variation in Trauma Care Times: Urban Versus Rural161
Thomas J. Esposito, MD, MPH, Ronald V. Maier, MD, Frederick P. Rivara, MD, MPH, Susan Pilcher, RN, Janet Griffith, MA, Susan Lazear, RN, MSN, Scott Hogan, MA

Spirituality of EMTs: A Study of the Spiritual Nature of EMS Workers and Its Effects on Perceived Happiness and Prayers for Patients168
Candace J. Backus, NREMT-B, William Backus, PhD, David I. Page, BA, NREMT-P

On-Line Medical Direction: A Prospective Study174
Richard C. Wuerz, MD, FACEP, Gregory E. Swope, EMT-P, C. James Holliman, MD, FACEP, Gaspar Vazquez-de Miguel, MD

Special Reports

Patient-Data Collection System Used During Medical Operations After the 1994 San Fernando Valley-Northridge Earthquake178
Ralph B. (Monty) Leonard, PhD, MD, FACEP, Lew W. Stringer, MD, FACA, Roy Alson, PhD, MD, FACEP

Hospital Application of the Incident Management System184
Donald Lendorf, MD, CM, FRCPC, FACEP

Incorporating Drugs and Devices into Emergency Medical Services Systems189
Douglas M. Wolfberg, BS, EMT, Vincent P. Verdile, MD, FACEP, Richard D. Flinn, Jr., MGA

Brief Report

Mistaken Identity: The Effect of Badges on EMT Recognition195
Lawrence H. Brown, EMT-P, Jeff Waldman, Terry W. Copeland, BS, NREMT-P, William E. Smithson, NREMT-P, N. Heramba Prasad, MD

Case Report

Isolated Intrathoracic Injury with Air Bag Use198
Andrew E. Sama, MD, FACEP, Douglas P. Barnaby, EMT-P, Kevin J. Wallis, EMT-P, MPH, Dominick Gadaleta, MD, Michael H. Hall, MD, Roy L. Nelson, MD, James Naidich, MD, Robert J. Ward, MD

Continuing Education

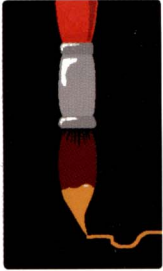
**Natural Hazards: Causes and Effects
Lesson 5—Tropical Cyclones (Hurricanes, Typhoons, Baguios, Cordonazos, Tainos)**
Eddie Perez, Paul Thompson202

Abstracts of Scientific Papers

**Ninth World Congress on Disaster and Emergency Medicine
Jerusalem, Israel 28 May–01 June 1995**S7

NAEMSP '96

The Emerging Picture of EMS



January 8-14, 1996
The Registry Resort, Naples, Florida

The NAEMSP Annual Conference is already
beginning to show its **COLORS!**
COLORS!
COLORS!
COLORS!

Join us in Naples, Florida and examine the canvas and artistry of the out of hospital community. You'll soon see why anyone who is someone in EMS says that this clearly has become the meeting of choice for everyone in the EMS arena.

We're Already Planning. . .

January 8-10, 1996

National EMS Medical Director Course

January 10-11, 1996

Pediatric Education for Paramedics Course

January 11, 1996

NAEMSP Database/Internet Workshop

January 11-13, 1996

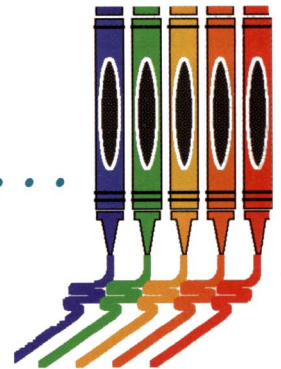
NAEMSP Annual Meeting: The Emerging EMS Picture

January 14, 1996

Pediatric Resource for EMT-B Instructors Course

Special Highlights. . .

- Social Events
- Networking at its best!
- Exploration of technological advances through trade exhibits
- Committee and board meetings featuring some of the most elite organizations serving the out of hospital industry
- White sandy beaches, water recreational facilities, swimming, tennis, soft music and relaxation at a luxurious resort.



CALL (412) 578-3222 FOR DETAILS

Join the Movement!

and offer the best prehospital care you can...

The movement toward quality control within prehospital care is growing at a rapid pace. The industry is growing more competitive. Responsibility and liability have become significant issues. Educate yourself and your front-line employees on how to provide continuous quality improvement with these reference tools from Mosby Lifeline—and join the movement!

Prehospital Systems and Medical Oversight, 2/e

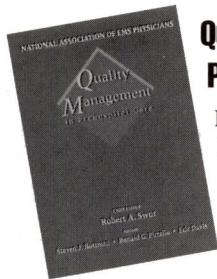
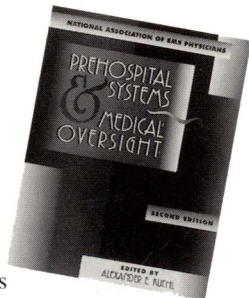
Formerly: *The EMS Medical Directors' Handbook*

National Association of EMS Physicians

Chief Editor: Alexander E. Kuehl, MD MPH, FACS with 62 contributors

- Offers the most comprehensive information available
- Addresses all components of an EMS system
- Identifies trends to prepare the reader for the future of EMS
- Contains new chapters on timely topics such as: high performance EMS, education, research, risk management, and political survival

1994 • 416 pages, 74 illus. • 06580 • \$44.00



Quality Management in Prehospital Care

National Association of EMS Physicians

Editor: Robert A. Swor, DO, FACEP with 25 other contributors

- Explains the theories behind Quality Improvement (QI)

- Details QI at all levels of involvement
- Addresses QI within a variety of systems
- Discusses how to establish a thriving program
- Applies key concepts to potential problems and solutions in the prehospital environment
- Includes tools for quality improvement

1993 • 265 pages, illustrated • 06579 • \$38.95



Call today! **1-800-633-6699**

For more information, call **1-800-MOSBY-n-U**

(1-800-667-2968)

LMA108

All the ACLS materials you need — now available from Mosby on these!

An entire ACLS library at your fingertips!

ACLS CD-ROM Library

John R. Williams

Includes the following

ACLS materials:

Ken Grauer, MD, FFAFP & Dan Cavallaro, REMT-P:

ACLS Certification Preparation, Volume 1

ACLS: A Comprehensive Review, Volume 2

ACLS Mega Code Review Study Cards



NEW!

Barbara Aehlert, RN:

ACLS Quick Review Study Guide

ACLS Quick Review Study Cards

ACLS Quick Review Slide Set

American Safety Video Publishers:

Pass ACLS Video

Compatible with IBM and MAC formats.

Interact with and learn from emergency victims —without risk!

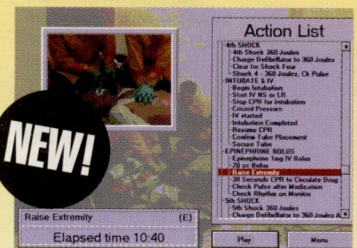
ACLS Review: INTERACTIVE

Dx/Rx Group

The user may observe an ideal ACLS response in "real time" through the use of video and sound clips! They may:

- Review any of the six core subject areas of ACLS
- Pause a demonstration to examine the finer points of skills and procedures
- Take preliminary and post tests
- Research an ACLS multi-media library
- Search for information
- Retrieve information

IBM compatible.



NEW!



Call today for more information!

1-800-MOSBY-n-U

Prices and specifications subject to change.

(1-800-667-2968)

LMA090

Guidelines for Advertisers	17
Forum	95
Guidelines for Authors	97

Editorial Office

University of Wisconsin-Madison, USA

Marvin Birnbaum, MD, PhD, Editor-in-Chief
James Pointer, MD, Associate Editor-in-Chief
Donna Schaan, Editorial Assistant

Advertising, Production, Subscription

Jems Communications, Carlsbad, Calif., USA

Laura M. Gilbert, Executive Editor
Tracy Michael, Managing Editor
Max Weaver, Technical Editor

Ruth Avery, Editorial Secretary/Reprints
Elizabeth Coyne DiPinto, Senior Graphics Specialist

Veronica Baisley, Acting Director, Sales
MaryBeth Locastro, Advertising Sales
Meg Davis, Advertising Sales

Michelle Barth, Director, Marketing
Georgette Bomar, Marketing Coordinator
Wanda Martin, Fulfillment Coordinator
Kevin Petrie, Director, Circulation
Harriet Wilcox, Director, Design and Production
Janene Long-Forman, Production Manager
Kevin Flanagan, Advertising Coordinator
Ariel Handley, Classified Sales

Keith Griffiths, President

James O. Page, Publisher

Prehospital and Disaster Medicine (ISSN 1049-023X) is published quarterly in the months of January, April, July, and October by Jems Communications, 1947 Camino Vida Roble, Carlsbad, CA 92008-6513, USA; (619)431-9797. *Prehospital and Disaster Medicine* incorporates the *Journal of the World Association for Emergency and Disaster Medicine* and the *Journal of Prehospital Medicine*.

Editorial Information: Submit manuscripts and editorial inquiries to: Marvin L. Birnbaum, MD, Editor, *Prehospital and Disaster Medicine*, Clinical Science Center, 600 N. Highland (E5/615), Madison, WI 53792, USA; Phone/Fax (608) 263-9641; e-mail: mlb@genie.medicine.wisc.edu

Subscription Information: One year (four issues)—Institutions: (U.S.)\$78; Individuals: \$55; Residents/In Training: \$39; Paramedic, Nurse, EMT: \$39. Canadian subscribers must add \$10 per year, and international subscribers add (U.S.) \$20 per year for postage. Claims of non-receipt or damaged issues must be filed within three months of cover date.

Advertising Information: Contact Jems Communications, P.O. Box 2789, Carlsbad, CA 92018 USA; (619) 431-9797; Fax (619) 431-8176

Abstracts: Abstracts available in the National Association of EMS Physicians Electronic Database and the Emergency Care Information Center (ECIC). Indexed in the Cumulative Index to Nursing and Allied Health (CINAHL). The database is available online via BRS, Data-Star, and DIALOG, and on CD-ROM through CD Plus, Compact Cambridge and Silver Platter.

Copyright © 1995 by the National Association of Emergency Medical Services Physicians (USA) and the World Association for Disaster and Emergency Medicine.

Postmaster: Send address changes to *Prehospital and Disaster Medicine*, P.O. Box 2789, Carlsbad, CA 92018 USA.

Second-class circulation postage paid at Carlsbad, Calif., and at additional mailing offices.

PREHOSPITAL and DISASTER MEDICINE

Médecine Pré-Hospitalière et Médecine de Catastrophe

THE OFFICIAL JOURNAL OF THE WORLD ASSOCIATION FOR DISASTER AND EMERGENCY MEDICINE (WADEM),

THE NATIONAL ASSOCIATION OF EMERGENCY MEDICAL SERVICES PHYSICIANS (NAEMSP),

IN ASSOCIATION WITH THE

THE NATIONAL ASSOCIATION OF STATE EMERGENCY MEDICAL SERVICES DIRECTORS (NASEMSD)

EDITOR-IN-CHIEF

Marvin L. Birnbaum, MD, PhD
EMS Program
University of Wisconsin–Madison
Madison, Wisconsin, USA

ASSOCIATE

EDITOR-IN-CHIEF

James Pointer, MD
North Broward Medical Center
Pompano Beach, Florida, USA

ASSOCIATE EDITORS

Kimball Maull, MD
Baltimore, Maryland, USA

Steven Rottman, MD
Department of Emergency
Medicine
UCLA Hospitals and Clinics
Los Angeles, California, USA

Martin Silverstein, MD
Department of Surgery
Uniformed Services University of
the Health Sciences
Bethesda, Maryland, USA

PAST EDITORS

R Adams Cowley, MD
Deceased
(JWAEDM 1986–87)

Peter Safar, MD
International Resuscitation
Research Center
University of Pittsburgh
Pittsburgh, Pennsylvania, USA
(JWAEDM 1981–85)

Michael Gunderson, REMT-P
Pinellas County EMS System
Largo, Florida, USA
(JPM 1987–88)

CONSULTING EDITORS

Peter Safar, MD
International Resuscitation
Research Center
University of Pittsburgh
Pittsburgh, Pennsylvania, USA

Ronald Stewart, MD
Victoria Hospital
Halifax, Nova Scotia, Canada

EDITORIAL BOARD

Jakov Adler, MD
Shaare Zedec Medical Center
Jerusalem, Israel

Fritz Ahnefeld, MD
University of Ulm
Ulm, Germany

Paul B. Anderson
Boise, Idaho, USA

Jack Ayres, JD, REMT-P
University of Texas Health
Science Center
Dallas, Texas, USA

Peter Baskett, MD
Frenchay Hospital
Bristol, UK

Jeff Clawson, MD
Medical Priority Consultants, Inc.
Salt Lake City, Utah, USA

Richard O. Cummins, MD
University of Washington
Seattle, Washington, USA

Craig DeAtley, PA-C
George Washington University
Medical Center
Washington, D.C., USA

Wolfgang Dick, MD
Johannes Gutenberg Universität
Mainz, Germany

Norm Dinerman, MD
Eastern Maine Medical Center
Bangor, Maine, USA

James DuCharme, MD
Royal Victoria Hospital
Montréal, Québec, Canada

Eelco Dykstra, MD
Center for International EMS
Wiesbaden, Germany

Morgan Fahey, MD, OBE
Shirley Medical Centre
Christchurch, New Zealand

Judith Fisher, MD
British Association
for Immediate Care
London, UK

Malcolm Fisher, MD
Royal North Shore Hospital
Sydney, Australia

George Foltin, MD
Bellevue Hospital Center
New York University Medical
Center
New York, New York, USA

S. William A. Gunn, MD
European Centre for Disaster
Medicine

Medical Society of the WHO
Geneva, Switzerland

Mark S. Johnson
EMS Section,
Alaska Dept. Public Health
Juneau, Alaska, USA

Alexander Kuehl, MD, MPH
Cornell University Medical College
New York, New York USA

Per Kulling, MD
Swedish Poison Information
Centre
Stockholm, Sweden

John C. Lane, MD
University of Campinas
Medical Center
Sao Paulo, Brazil

Baxter Larmon, PhD, EMT-P
UCLA Medical Center
Los Angeles, California, USA

Prof. Li Zhong-Hao, MD
Beijing Emergency Medical
Center
Beijing, China

Susan D. McHenry
EMS Division,
Virginia Dept. of Health
Richmond, Virginia, USA

Norman E. McSwain, Jr., MD
Tulane University Medical Center
New Orleans, Louisiana, USA

Sergio Magalini, MD
Universita Cattolica del
Sacro Cuore
Rome, Italy

Ronald F. Maio, DO
University of Michigan
Medical Center
Ann Arbor, Michigan, USA

Michael Moles, MD
Prince Philip Hospital
Hong Kong University
Hong Kong

Prof. Bernard Nemitz, MD
Service d'Aide Médicale
Urgente Centre Hospitalier
Regionale et Universitaire
Amiens, France

Eric Noji, MD
United States Centers for Disease
Control & Prevention
Atlanta, Georgia, USA

Judy Olson, BSN
University of Wisconsin–Madison
Madison, Wisconsin, USA

James O. Page, JD
Emergency Care Information
Center
Carlsbad, California, USA

Paul Paris, MD
University of Pittsburgh
Pittsburgh, Pennsylvania, USA

Jirí Pokorný, MD, DrSc
Post-Graduate Medical School
Prague, Czech Republic

Lawrence W. Rose, MD
Bethesda, Maryland, USA

Leonid B. Roshal, MD
Institute of Pediatrics
Academy of Medical Sciences
Moscow, Russia

Sandra M. Schneider, MD
University of Rochester Medical
Center
Rochester, New York USA

Victor Semenov, MD
Reanimatology Institute
Academy of Medical Sciences
Moscow, Russia

Shao Xiaohong, MD
Peking Union Medical College
Chinese Academy of Medical
Science
Beijing, China

Daniel Spaite, MD
University of Arizona
Tucson, Arizona, USA

Takashi Ukai, MD
Osaka City General Hospital
Osaka, Japan

Connie Walleck, RN, MS
Health Science Center SUNY—
Syracuse
Syracuse, New York, USA

Donald Yealy, MD
University of Pittsburgh
Pittsburgh, Pennsylvania USA

Last Year,
Sam Bought A
Cheaper Ambulance.

This Year,
He's Still Paying
For It . . .

Upfront, Sam thought he had saved a few thousand. Unfortunately, down the road, Sam paid far more than full price.

Sam paid for it with much higher operating costs, excessive downtime, greater maintenance costs, a lower trade-in value, and a complete lack of day-to-day customer service.

- Sam sacrificed the long-term reliability, superior engineering, meticulous craftsmanship, and overall quality that's *delivered* in every Wheeled Coach.
- Sam gave up access to 24-Hour problem-solving assistance and mechanical expertise—resulting in lost revenue and increased downtime.
- Sam lost access to the largest Parts Department and the biggest Customer Service Support Network in the industry.
- Sam could not take advantage of bimonthly 2-Day Service Seminars, conducted by certified technicians.

Sam *now* fully understands the real value of buying a complete and comprehensive package. Poor Sam!



The Vehicle That Sam's Crew Now Depends On The Most!


A SUBSIDIARY OF COLLINS INDUSTRIES

We Deliver More Than Anyone Else!

POST OFFICE BOX 677339, ORLANDO, FL 32867-7339
PHONE: 1-800-342-0720 FAX: 407-679-1337

© 1995 WHEELED COACH. ALL RIGHTS RESERVED.



Meet Sam's New Best Friend, Or Give Us A Call!

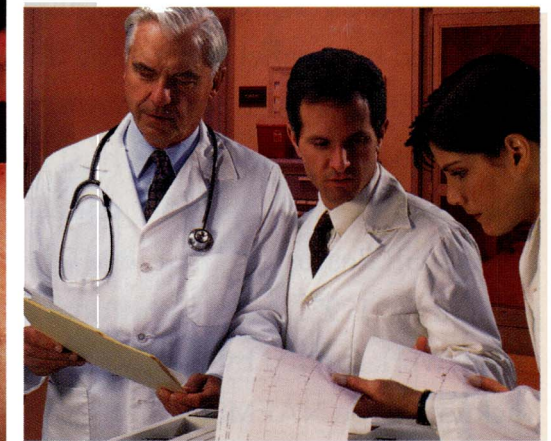
Accuracy Counts!



Prehospital treatment of chest pain demands more than just speed — it demands accurate ECG analysis for prompt diagnosing and treatment.

Today, the highest accuracy is offered through the Marquette 12SL™ ECG analysis program. Medical professionals widely praise its accuracy, reliability and ability to save precious time. They appreciate the responsiveness of a system that delivers 80% sensitivity and 98% specificity for identifying patients with acute myocardial infarctions and ST-segment elevations.¹ And data from our 12SL program, stored in MUSE® cardiology management systems, is available for continuing analysis and subsequent treatment.

Marquette is the veteran of prehospital 12-lead ECG programs, having developed our system since 1986. Today, a dedicated team continues to refine and upgrade the program, clinically correlating its analyses to make it the industry leader for accuracy.



Learn the benefits of incorporating the Marquette 12SL ECG analysis program into your prehospital program by contacting your Marquette representative or call 1-800-917-6000 ext. 2573.



marquette

MEDICAL SYSTEMS WORLDWIDE

8200 West Tower Avenue
Milwaukee, WI 53223 USA

¹"Prehospital-Initiated vs. Hospital-Initiated Thrombolytic Therapy," *Journal of American Medicine*, September 8, 1993.

The National Association of
EMS Physicians
announces

Call for Proposals: Out of Hospital Cardiac Care Research

Amount: \$2,500

Submission Deadline: September 1, 1995

Notification of Award: December 1, 1995

Funds Awarded: January 14, 1996

Proposals are requested for research projects regarding out of hospital cardiac care research. Submissions may address basic science, epidemiologic, clinical or health services research areas. Proposals will be reviewed by a panel selected by the Chair of the NAEMSP Research Committee. Specific work funded by this award must be completed and a final report submitted to the NAEMSP Research Committee Chair by January 1, 1997. Any publications resulting from work funded by this award must acknowledge NAEMSP as a funding source.

*This funding made possible by an
educational grant given by the
Zoll Corporation.*

**For official rules and regulations,
please call NAEMSP at (412) 578-3222.**



The National Association
of EMS Physicians
announces the
return of the

Cerebral Resuscitation Paper Competition for 1996

Naples, Florida

\$5,000 Awarded to Four Finalists

Deadline: November 10, 1995

General Information

Four finalists will be selected, and papers presented at a special showcase session at the NAEMSP Annual Meeting. The meeting will take place in Naples, Florida, January 8-14, 1996, at the Registry Resort. The first place winner will receive a \$2,000 cash award and a plaque. The three runners-up will each receive \$1,000 and a plaque.*

Finalists must present their papers at the meeting to win the awards. Finalists may have presented at another meeting as well.

Submission Deadline

Abstracts must be submitted on the official abstract form and must be received (not postmarked) by November 10, 1995 at the NAEMSP National Office. To obtain official abstract forms, please call the NAEMSP Office at (412) 578-3222.

Criteria

Eligible abstracts must pertain to brain resuscitation, and can be either basic science or clinical research. Topics include, but are not limited to:

- ▶ Shock/Low Flow States
- ▶ Head Trauma
- ▶ Stroke/Focal Ischemia
- ▶ Intracranial Hemorrhage
- ▶ Global Ischemia/Cardiac Arrest

Eligibility

Abstracts may be new or may have been previously presented provided they were presented after January 1, 1994 and have not been published in manuscript form by January 1996.

**This award has been made possible through an educational grant given by The Upjohn Company.*

Classifieds

2nd Annual EM/EMS Convergence: Cardiovascular Collapse

September 22-24, 1995 • Atlantic City, NJ

Contact: Sherrie Heffernan, Program Coordinator
St. Luke's Hospital, 801 Ostrum Street
Bethlehem, PA 18015
(610)954-4903; FAX (610)954-4979

CLASSIFIEDS RATES:

\$55 for 60 words or less; \$2 for each additional word.
Display Ad (includes border, logo or illustration/photo):
\$45 per column inch for each insertion.

Please send your copy with payment to:
PDM Classifieds, P.O. Box 2789, Carlsbad, CA 92018
(or)
FAX your ad with VISA, MC, or American Express number to:
(619)431-8194. Call (619)431-9797 for more information.
Deadline for the October-December issue is 8-3-95.

Call for Original Studies

The Prehospital Care Research Forum is accepting studies and original presentations for the 14th Annual EMS Today Conference in Albuquerque, N.M., March 13 to March 16, 1996.

Studies representing the most original scientifically based work will be invited to present their material during the oral sessions at EMS Today. Submissions not selected for oral presentations will be considered for poster presentations. Notable abstracts will be published in the Prehospital Care Research Forum supplement to JEMS.

For a complete submission packet,
call the UCLA Center for Prehospital Care
at 310/794-8797.

Deadline for submissions is Friday, Sept. 29, 1995

Sponsored by
JEMS



PREHOSPITAL CARE
**RESEARCH
FORUM**

Sponsored by
14th Annual
**EMS
Today**
CONFERENCE
& EXPOSITION

UCLA Center for Prehospital Care • 924 Westwood Blvd., Suite 300 • Los Angeles, CA 90024

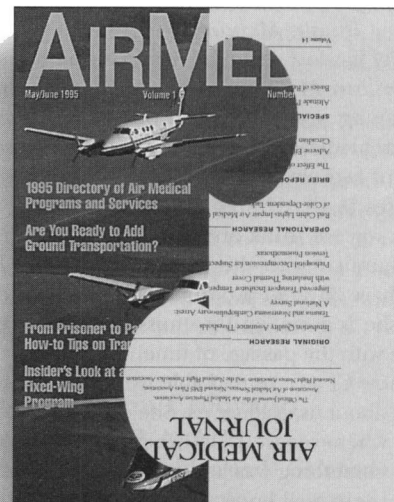
Get the picture?

■ To get the complete picture, you need all pieces of the puzzle. That's why you get **both** AIRMED and the *Air Medical Journal* for **one** subscription price. The bimonthly AIRMED brings you the latest industry news and information, how-to articles, health care reform/updates, program profiles and topics covering safety and operations. The quarterly *Air Medical Journal* is the **only** peer-reviewed journal dedicated solely to the science of air medical transport. The journal is replete with scientific, research oriented articles and position papers.

Get the complete picture!

\$45 buys you a one-year subscription to the *only* two journals dedicated to air medical professionals.

To subscribe to AIRMED and the *Air Medical Journal* use the card found in this issue. If card is missing, please call the toll-free number 800/266-5367.



AIRMED and the *Air Medical Journal* are official publications of the Association of Air Medical Services (AAMS), the National EMS Pilots Association (NEMSPA), the National Flight Nurses Association (NFNA), the National Flight Paramedics Association (NFPA), and (pending) the Air Medical Physicians Association (AMPA).