

VOL. XCIV, NO. 394

JANUARY, 1948

# THE JOURNAL OF MENTAL SCIENCE

(THE BRITISH JOURNAL OF PSYCHIATRY)



BY AUTHORITY OF  
THE ROYAL MEDICO-PSYCHOLOGICAL ASSOCIATION

EDITOR-IN-CHIEF

**G. W. T. H. FLEMING**

CO-EDITORS

**Alexander Walk and P. K. McCowan**

AND WITH THE ASSISTANCE OF

<b>E. D. Adrian</b>	<b>E. G. Holmes</b>
<b>F. C. Bartlett</b>	<b>C. J. McCarthy</b>
<b>S. M. Coleman</b>	<b>Alfred Meyer</b>
<b>C. J. C. Earl</b>	<b>Lionel S. Penrose</b>
<b>Sir A. Fleming</b>	<b>A. A. W. Petrie</b>
<b>F. L. Golla</b>	<b>E. T. O. Slater</b>
<b>W. Stephenson</b>	

LONDON

**J. & A. CHURCHILL, LTD**

**Published Four times Yearly, Ten Shillings and Sixpence net**

# THE JOURNAL OF MENTAL SCIENCE

---

Communications on general editorial matters, including MSS. for publication, books for review and other printed matter, and communications regarding the *Epitome* section, including journals to be abstracted, should be sent to the **Editor-in-Chief, Barnwood House, Gloucester.**

Communications and inquiries regarding sales should be addressed to the Publishers, **Messrs. J. & A. CHURCHILL, Ltd., 104, Gloucester Place, Portman Square, London, W.1;** and those regarding Advertisements to **Messrs. S. & H. FRETWELL, Ltd., 92, Fleet Street, London, E.C.4.** Phone: Central 5587/8.

---

## THE ROYAL MEDICO-PSYCHOLOGICAL ASSOCIATION

---

### PUBLICATIONS

From **MESSRS. ADLARD & SON, LTD.,**  
Bartholomew Press, Dorking.

- "The Clinical Study of Mental Disorders."** By J. R. LORD, *C.B.E., M.D., F.R.C.P.E.*  
Price 6/-. Postage 4d.
- The Charter and Bye-Laws of the Association.** Price 1/-. Postage 1d.
- Engraved Book-Plate of the Association.** Price 1/-. Postage 1d.
- Enquiry (History) Form,** supplied in three sizes: 16 pp., 9½" × 6½"; 8 pp., 12½" × 8" 4 pp., 16" × 10". Prices on application.
- Card of Practical Instruction.** Prices on application.

From **MESSRS. J. & A. CHURCHILL, LTD.:**

- Catalogue of the Library of the Royal Medico-Psychological Association.** 1928.  
Price 2/-. Post free.

From **BAILLIÈRE, TINDALL & COX:**

- "Handbook for Mental Nurses."** 7th edn. 1923. Price 7/- net.
- "Manual for Mental Deficiency Nurses."** 1931. Price 6/6 net.
- "Occupational Therapy Brochure."** 1938. Price 1/-.

From the **SECRETARY, 11 Chandos Street, London, W. 1:**

- "Regulations and Rules for the Examinations for the Certificates of Proficiency in Mental Nursing and in Nursing Mental Defectives."** Price 1/-.  
Postage 1d.
- "Syllabuses for the Examinations for the Certificates of Proficiency in Nursing Mental Defectives."** Price 2d. each. Postage 1d.
- Examination Papers, 1928-38** (reprinted). Price 1/6. Postage 1d.

*Made and printed in Great Britain.*

**routine  
measure  
against**

Many medical superintendents of Mental Hospitals make a routine practice of inoculating new admissions against typhoid and paratyphoid infections.

Effective immunization in this manner is achieved by the suspended vaccine, Anti-Typhoid-Paratyphoid (T.A.B.) *Glaxo*. Grown in a liquid *synthetic* culture medium, the vaccine eliminates unspecific reaction due to foreign proteins and impurities. Prepared from carefully selected, smooth, virulent strains, it gives a highly satisfactory antibody response as shown by agglutination tests in human beings and by the mouse protection test. Reactions are slight and infrequent.

**TYPHOID**



**ANTI-TYPHOID-PARATYPHOID (T.A.B) VACCINE *Glaxo***

**(Synthetic Culture Medium)**

5 cc. and 25 cc. rubber-capped bottles

**GLAXO LABORATORIES LTD. GREENFORD, MIDDLESEX BYRon 3434**

# ADLARD & SON

LIMITED

**BARTHOLOMEW PRESS  
DORKING — SURREY**



**PRINTERS  
OF THIS ::  
:: JOURNAL**

ESTIMATES SUBMITTED PROMPTLY

**FOUNDED IN 1766**, the Firm has continued uninterruptedly, and is able to undertake **ALL CLASSES OF PRINTING**.

**The Staff is Specially Trained** in the production of all printed matter connected with **Private Hospitals and Homes, Medical, Scientific and other Institutions**.

Regd. Offices : 194/200 BISHOPSGATE, E.C. 2.

Tel.: DORKING 2896.

## HOLME LACY HOSPITAL

**HOLME LACY  
HEREFORD ::**

**FOR LADIES SUFFERING FROM  
NERVOUS AND MENTAL DISORDERS.**

This Hospital is situated in 30 acres of garden with magnificent views of the Wye Valley, and homelike surroundings.

Every facility for specialized investigation and treatment provided.

Voluntary, Temporary and Certified patients received.

Terms from Four and a Half Guineas weekly.

For further particulars apply to the Physician-Superintendent.

Telephone : Burghill 4.

## Wonford House, Exeter

A Registered Hospital for treatment of mental disorders of the educated classes. Cases under certificate, voluntary and temporary patients, received for treatment. Modern methods of treatment available. Terms moderate.

Apply Medical Superintendent.

Tel. Exeter 26

**MENTAL HOSPITALS, INSTITUTIONS, HOMES, ETC.**

**ST. ANDREW'S HOSPITAL**  
**FOR NERVOUS AND MENTAL**  
**DISORDERS**  
**NORTHAMPTON**

*President:* THE MOST HON. THE MARQUESS OF EXETER, K.G., C.M.G., A.D.C.

*Medical Superintendent:* THOMAS TENNENT, M.D., F.R.C.P., D.P.H., D.P.M.

This Registered Hospital is situated in 130 acres of park and pleasure grounds. Voluntary patients, who are suffering from incipient mental disorders or who wish to prevent recurrent attacks of mental trouble, temporary patients, and certified patients of both sexes are received for treatment. Careful clinical, bio-chemical, bacteriological, and pathological examinations. Private rooms with special nurses, male or female, in the Hospital or in one of the numerous villas in the grounds of the various branches can be provided.

**WANTAGE HOUSE**

This is a Reception Hospital in detached grounds with a separate entrance, to which patients can be admitted. It is equipped with all the apparatus for the complete investigation and treatment of Mental and Nervous Disorders by the most modern methods; insulin treatment is available for suitable cases. It contains special departments for hydrotherapy by various methods, including Turkish and Russian baths, the prolonged immersion bath, Vichy Douche, Scotch Douche, Electrical baths, Plombières treatment, etc. There is an Operating Theatre, a Dental Surgery, an X-Ray Room, an Ultra-Violet Apparatus, and a Department for Diathermy and High-Frequency treatment. It also contains Laboratories for biochemical, bacteriological, and pathological research. Psychotherapeutic treatment is employed when indicated.

**MOULTON PARK**

Two miles from the Main Hospital there are several branch establishments and villas situated in a park and farm of 650 acres. Milk, meat, fruit and vegetables are supplied to the Hospital from the farm, gardens, and orchards of Moulton Park. Occupational therapy is a feature of this branch, and patients are given every facility for occupying themselves in farming, gardening and fruit-growing.

**BRYN-Y-NEUADD HALL**

The seaside house of St. Andrew's Hospital is beautifully situated in a Park of 330 acres at Llanfair-fechan, amidst the finest scenery in North Wales. On the North-West side of the Estate a mile of sea-coast forms the boundary. Patients may visit this branch for a short seaside change or for longer periods. The Hospital has its own private bathing house on the seashore. There is trout-fishing in the park.

At all the branches of the Hospital there are cricket grounds, football and hockey grounds, lawn tennis courts (grass and hard courts), croquet grounds, golf courses, and bowling greens. Ladies and gentlemen have their own gardens, and facilities are provided for handicrafts, such as carpentry, etc.

For terms and further particulars apply to the Medical Superintendent (Telephone No. 2356 and 2357 Northampton), who can be seen in London by appointment.

**HEIGHAM HALL, NORWICH**  
**PRIVATE MENTAL HOME**

for Nervous and Mental illness. All forms of treatment available. Fees from 4 gns. per week upwards, according to requirements. Vacancies occasionally exist at reduced fees on the recommendation of the patient's own physician.

**Apply to Dr. J. A. SMALL.**

TELEPHONE: NORWICH 20080.

**LAVERSTOCK HOUSE SALISBURY**  
**WILTS**  
**PRIVATE MENTAL HOME FOR LADIES AND GENTLEMEN**

Completely up to date. Lovely house and grounds (18 acres). Certified and uncertified cases taken. Facilities for going to the seaside.

**ESTABLISHED OVER 200 YEARS**

Apply to the Med. Supt. for illustrated brochure.

Tel.: SALISBURY 2612.

## To help vanquish depression masquerading as bodily ailments



Depressions manifesting themselves as apparently unrelated somatic complaints seldom yield to treatment until the patient's underlying emotional conflicts have been, in some measure, exposed and ventilated. Thereafter, 'Bensedrine' Tablets may give significant help in speeding the patient's recovery from depression masquerading as a bodily ailment. As his depression diminishes, the patient's pre-occupation with his symptoms should decrease, thus doing much to relieve his psychosomatic distress.

### 'Bensedrine' Tablets

Sample and literature sent on the signed request of physicians

Each tablet contains 5 mg.  
amphetamine sulphate

Manufactured and distributed by

**MENLEY & JAMES LTD.**

123 Coldharbour Lane, London, S.E.5

For Smith, Kline & French Laboratories

B7Ces

# CLIFFDEN, TEIGNMOUTH

FOR THE EARLY TREATMENT OF  
NERVOUS DISORDERS AND PATIENTS  
. . . NEEDING REST AND CARE . . .

A well appointed House with spacious balconies and extensive views of the South Devon Coast. Beautiful Garden and own Dairy in 35 acres.

In the same grounds,

**ROWDENS**, a comfortable house with lovely views  
Private road to the beach

There is also a charming house,

**EBWORTHY, MANATON,**

situated in 25 acres, 1,100 ft. up for bracing moorland air.

*Resident Physicians :*

BERTHA M. MULES, M.D., B.S. ANNE S. MULES, M.R.C.S., L.R.C.P.

Telephones: TEIGNMOUTH 289 & 537.

THE  
**INTERNATIONAL JOURNAL**  
OF  
**PSYCHO-ANALYSIS**

Founded by

**ERNEST JONES**

*Official Organ of the International Psycho-Analytical Association*

Edited by

**ADRIAN STEPHEN**

With the assistance of

MARJORIE BRIERLEY (London)

C. P. OBERNDORF (New York)

SYLVIA PAYNE (London)

JOHN RICKMAN (London)

*Contents of Volume XXVII, Parts 1 & 2, 1946*

ORIGINAL PAPERS:

On Group Analysis	...	...	...	...	Foulkes, S. H.
An Unusual Neurosis Following Head Injury	...	...	...	...	Rosenberg, Elizabeth.
The Treatment of Psychoneurosis in the British Army	...	...	...	...	Thorner, H. A.
The Mental and the Physical Origins of Behaviour	...	...	...	...	Adrian, E. D.
Hypnotism and Suggestion (1888)	...	...	...	...	Freud, Sigmund.
From King Lear to the Tempest	...	...	...	...	Sharpe, Ella Freeman.
Object-Relationships and Dynamic Structure	...	...	...	...	Fairbairn, W. Ronald D.
A Valedictory Address	...	...	...	...	Jones, Ernest.
<i>Abstracts. Book Reviews. Publications Received. Obituary. Bulletin of the International Psycho-Analytical Association.</i>					

*Editorial Communications* should be sent to the Editor, Dr. Adrian Stephen, 1, Upper Harley Street, W.1, or to Dr. C. P. Oberndorf, 112 West 59th Street, New York.

*Business Communications* should be sent to the Publishers, Baillière, Tindall & Cox, 7 & 8 Henrietta Street, Covent Garden, London, W.C. 2

The Annual Subscription is **30s.** per Volume  
of Two Double-Parts

*Published for the Institute of Psycho-Analysis by*

**BAILLIÈRE, TINDALL & COX**

**7 & 8 Henrietta Street, London, W.C. 2**

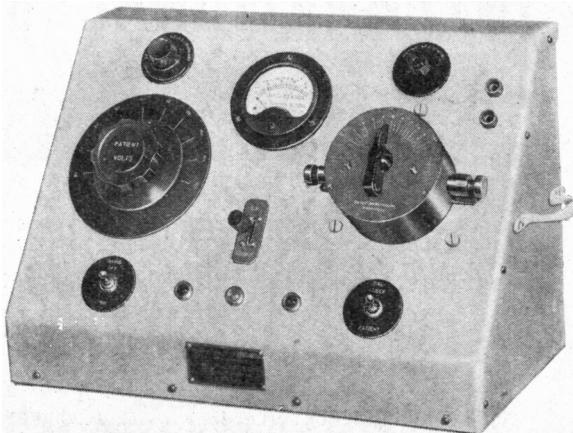
## ELECTRIC CONVULSION THERAPY

for treatment of Melancholia, Mental & Psychiatric Disorders

(EDISWAN MODEL)

### MEDICAL OBSERVATIONS:

Many thousands of cases have been successfully treated by this method, including sufferers from INVOLUTIONAL MELANCHOLIA, CLIMACTERIC DEPRESSION, RECENT MANIA, ACUTE PSYCHOSES AND OTHER PSYCHIATRIC DISORDERS.



A new apparatus constructed to specification of Mr. GREY WALTER. The ideal method for inducing epileptiform seizures. Administration is simple, speedy and effective. Complete amnesia of patient. Apparatus is portable and is in use in more than 250 Hospitals.

Please write for brochure describing technique together with clinical data and bibliography.

**COX-CAVENDISH ELECTRICAL CO., LTD.**

Phone : ] 45-47 Marylebone High Street, London, W. 1 [WELbeck 2886-7

## Northumberland House Green Lanes, Finsbury Park, N. 4

A PRIVATE HOSPITAL for the treatment of Mental and Nervous illnesses. Conveniently situated and easy of access from all parts. Six acres of ground, facing Finsbury Park. Voluntary and Temporary Patients received without certification. E.C.T., Group Psychotherapy. Insulin Coma Unit.

Trained Resident and Visiting Staff.

Telephone: Stamford Hill 7866/7 (2 lines.) Telegrams: "Subsidiary, London."

For further particulars apply to the Medical Superintendent,

**ROBERT M. RIGGALL,**

Member, British Psycho-Analytical Society.

## BETHLEM ROYAL HOSPITAL

Telephone: SPRINGPARK 1180-1181.

President: HER MAJESTY QUEEN MARY.

Phy.-Sup.: J. G. HAMILTON, M.D., D.P.M.

**FOR NERVOUS AND MENTAL  
DISORDERS**

**Monks Orchard, Eden Park,  
Beckenham, Kent**

This Registered Hospital is situated at Monks Orchard in some 250 acres of park, pleasure and farm grounds.

Applications can be considered on behalf of patients of the educated classes in a presumably curable condition. With a view to early treatment, voluntary or uncertified patients are admitted. Patients who can contribute 5 guineas weekly towards the cost of treatment and maintenance may be received as vacancies arise. The Committee will also consider applications for admission at lower rates and in certain cases will be prepared to admit patients free of charge. The comfort of sensitive patients is greatly enhanced by the fact that the majority are given single bedrooms.

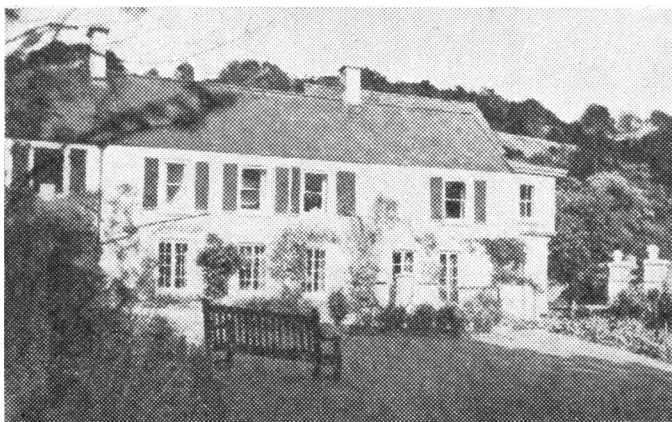
**Additional Accommodation for Male Patients** is now available by reason of completion of war damage repairs.

The Medical Staff have access to a panel of Consultants in cases which present unusual symptoms requiring specialised investigation and treatment.



# BARNWOOD HOUSE

## GLOUCESTER



CRICKLEY COURT—ONE OF THE SEPARATE VILLAS

**A** REGISTERED HOSPITAL for the CARE and TREATMENT of LADIES and GENTLEMEN suffering from NERVOUS and MENTAL DISORDERS. Within two miles of the G.W. Railway, and L.M.&S. Railway Stations at Gloucester, the Hospital is easily accessible by rail from London, and all parts of the United Kingdom. It is beautifully situated at the foot of the Cotswold Hills, and stands in its own grounds of over 300 acres. Voluntary Patients of both sexes are also received for treatment. Special accommodation is also provided at four villa residences, all of which stand in their own grounds and are entirely separate from the main Hospital. All the most modern methods of treatment including electric shock and prefrontal leucotomy are used.

*For Terms, etc., apply to*

**G. W. T. H. FLEMING, M.R.C.S., L.R.C.P., D.P.M.,**  
**Physician Superintendent,**

*who may be seen in London by appointment*

TELEPHONE: No. 6207 GLOUCESTER

"*R*  
*Insulin*  
— *Boots*"

WHEN the prescription is for Insulin, Protamine Zinc Insulin, or Globin Insulin (with Zinc), and the purest, most effective, potent Insulin is required, prescribe INSULIN — BOOTS.

Boots Pure Drug Co. Ltd. have been pioneers in the manufacture of Insulin for the past quarter of a century.



*MEDICAL DEPARTMENT*

**BOOTS PURE DRUG COMPANY LIMITED**  
**NOTTINGHAM** **ENGLAND**

# **ELIXIR GABAIL**

(BROMO-VALERIANATE)

**The Ideal Sedative in all Nervous Affections**

Elixir Gabail combines the sedative action of Bromide and Chloral Hydrate with the nervine and anti-spasmodic deodorised Valerianate. Pharmaceutically it is as pleasant and palatable as it is efficacious from the therapeutic standpoint, the disagreeable odour and flavour of the Valerian having been completely removed without in any way impairing its therapeutic value.

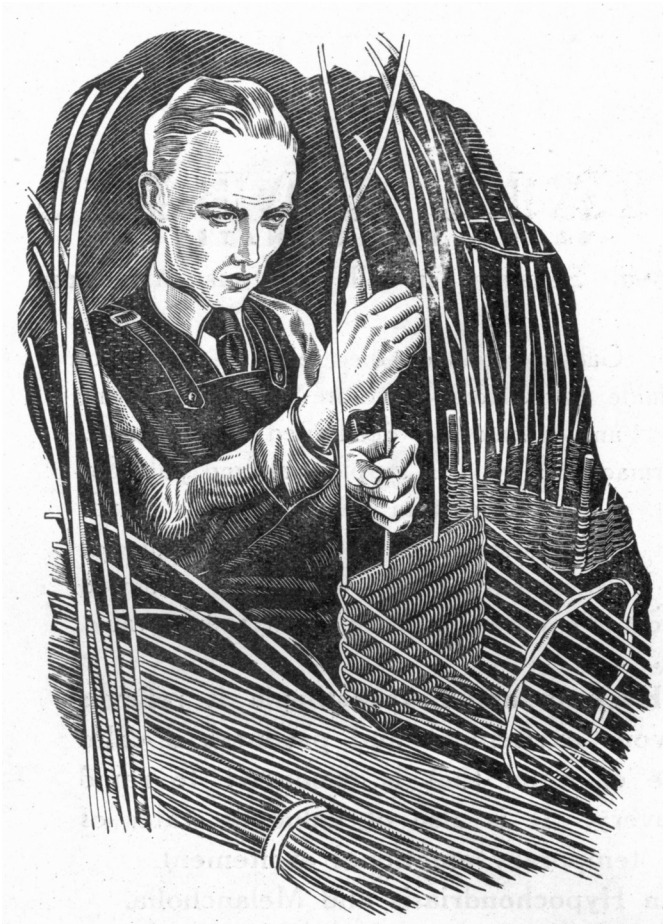
**In Hysteria and Psychasthenia it relieves nervous excitement and produces a calm state of mind that is conducive to rapid recovery. It is also of value in states of temporary emotional excitement, in Hypochondriasis and Melancholia.**

Dosage : One tablespoonful in water twice or thrice daily. As a hypnotic : two tablespoonfuls in water at bedtime.

Supplied in bottles of 187 c.c. and in bulk for Hospital use.

*Literature and Samples on request.*

**THE ANGLO-FRENCH DRUG Co. Ltd.**  
**11-12, Guilford Street, London, W.C. 1**



**'RUTONAL'** BRAND  
methophenobarbitone

for the Rehabilitation of the Epileptic  
the 'Rutonal' booklet is available on request



manufactured by

**MAY & BAKER LTD.**

distributors:

**PHARMACEUTICAL SPECIALITIES (MAY & BAKER) LTD.**

**DAGENHAM**

47175

[Facing first matter.]