

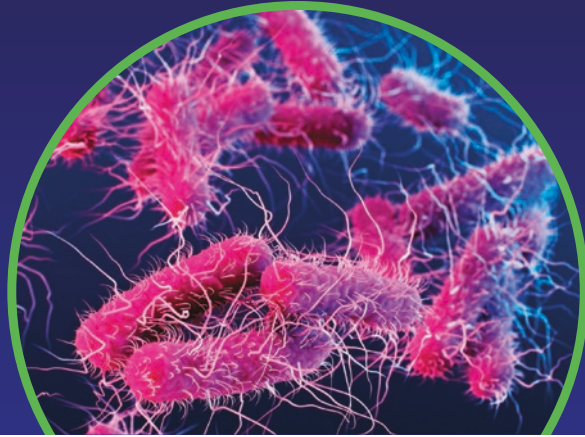
Preventing cross-contamination can save lives  
Are your hands clean?  
Let us show you



[www.glogerm.com](http://www.glogerm.com)  
800-842-6622

ASHE

# Antimicrobial Stewardship & Healthcare Epidemiology



The Society for Healthcare Epidemiology (SHEA) and Cambridge University Press are pleased to announce the launch of a new, open access journal, *Antimicrobial Stewardship and Healthcare Epidemiology (ASHE)*.

*ASHE* will publish submissions of original research that will contribute to the fields of antimicrobial stewardship, healthcare epidemiology and infection prevention with the goal of improving healthcare safety globally.

[cambridge.org/ashe](https://doi.org/10.1017/ice.2025.51)



CAMBRIDGE  
UNIVERSITY PRESS