

Contents of *The American Journal of Psychiatry*

January 1995

Volume 152

Editorial

Grief: normal and pathological variants. *Milton Viederman* 1

Images in Neuroscience

Cortex, III: prefrontal cortex. *Essay by Lynn D. Selemon, Patricia S. Goldman-Rakic and Carol A. Tamminga* 5

Special Articles

The contribution of neuropsychology to psychiatry. *Richard S. E. Keefe* 6

Homosexuality and the military. *Franklin D. Jones and Ronald J. Koshes* 16

Regular Articles

Complicated grief and bereavement-related depression as distinct disorders: preliminary empirical validation in elderly bereaved spouses. *Holly G. Prigerson, Ellen Frank, Stanislav V. Kasl, Charles F. Reynolds III, Barbara Anderson, George S. Zubenko, Patricia R. Houck, Charles J. George and David J. Kupfer* 22

Atypical depression: clinical aspects and noradrenergic function. *Gregory Mark Asnis, Lata Keswani McGinn and William Charles Sanderson* 31

Prevalence and correlates of dysthymia and major depression among patients with Alzheimer's disease. *Ricardo Migliorelli, Alejandra Tesón, Liliana Sabe, Martín Petracchi, Ramón Leiguarda and Sergio E. Starkstein* 37

Alcoholism and affective disorder: clinical course of depressive symptoms. *Sandra A. Brown, Robyn K. Inaba, J. Christian Gillin, Marc A. Schuckit, Michael A. Stewart and Michael R. Irwin* 45

Neuropsychological functioning in detoxified alcoholics between 18 and 35 years of age. *Michael J. Eckardt, June M. Stapleton, Robert R. Rawlings, Elizabeth Z. Davis and Douglas M. Grodin* 53

Hypokalemia in outpatients with eating disorders. *David Greenfeld, Diane Mickley, Donald M. Quinlan and Phyllis Roloff* 60

Anorexia nervosa and anorexic-like syndromes in a population-based female twin sample. *Ellen E. Walters and Kenneth S. Kendler* 64

Obsessive-compulsive disorder among patients with anorexia nervosa and bulimia nervosa. *Andreas Thiel, Andreas Broocks, Martin Ohlmeier, Georg E. Jacoby and Gerhard Schüßler* 72

A family study of obsessive-compulsive disorder. *David L. Pauls, John P. Alsobrook II, Wayne Goodman, Steve Rasmussen and James F. Leckman* 76

Laboratory response of patients with panic and obsessive-compulsive disorders to 35% CO₂ challenges. *Giampaolo Perna, Angelo Bertani, Cinzia Arancio, Paolo Ronchi and Laura Bellodi* 85

DSM-IV field trial: obsessive-compulsive disorder. *Edna B. Foa and Michael J. Kozak* 90

DSM-IV field trial: testing a new proposal for somatization disorder. *Sean H. Yutzey, C. Robert Cloninger, Samuel B. Guze, Elizabeth F. Pribor, Ronald L. Martin, Roger G. Kathol, G. Richard Smith and James J. Strain* 97

Attempted suicide among Vietnam veterans: a model of etiology in a community sample. *Alan Fontana and Robert Rosenbeck* 102

Sleep events among veterans with combat-related posttraumatic stress disorder. *Thomas A. Mellman, Renee Kulick-Bell, Lawrence E. Ashlock and Bruce Nolan* 110

Arousal, numbing and intrusion: symptom structure of PTSD following assault. *Edna B. Foa, David S. Riggs and Beth S. Gershuny* 116

Images in Psychiatry

Jean-Martin Charcot, 1825-1893. *Essay by Yves Lebrubier* 121

Brief Reports

Fluoxetine and extrapyramidal side effects. *David M. Coulter and Peter I. Phillans* 122

Basal ganglia phosphorous metabolism in chronic schizophrenia. *Raymond F. Deicken, Giovanna Calabrese, Edward L. Merrin, George Fein and Michael W. Weiner* 126

Improvement of some schizophrenic deficit symptoms with low doses of amisulpride. *Marie-Laure Paillère-Martinot, Yves Lecrubier, Jean-Luc Marinot and François Aubin* 130

Exclusion of close linkage of the dopamine transporter gene with schizophrenia spectrum disorders. *Antonio M. Persico, Zhe Wu Wang, Donald W. Black, Nancy C. Andreasen, George R. Uhl and Raymond R. Crowe* 134

Learning and memory in combat veterans with posttraumatic stress disorder. *Rachel Yehuda, Richard S. E. Keefe, Philip D. Harvey, Robert A. Levensgood, Douglas K. Gerber, Jennifer Geni and Larry J. Siever* 137

POST TRAUMATIC STRESS, DISSOCIATIVE DISORDERS AND THE INFLUENCE OF CULTS PROGRAMME

Thursday 23 February 1995

08.30 – 09.30 **Registration**
Chairperson: **Professor William Parry-Jones,**
Department of Child and Adolescent
Psychiatry, University of Glasgow

09.30 – 10.10 **PTSD: Biological and nosological
perspectives**
Professor Bessel Van Der Kolk
Associate Professor of Psychiatry
Harvard Medical School, USA

10.10 – 10.50 **Primary victims: Kings Cross Fire**
Dr James Thompson
Senior Lecturer in Psychology
University College London Medical
School, London

10.50 – 11.05 **Coffee**

11.05 – 11.45 **War victims: Surgeon Commander**
Morgan O'Connell
Consultant Adviser in Psychiatry
Royal Naval Hospital, Gosport

11.45 – 12.25 **Piper Alpha:**
Some lessons to be learned
Professor David Alexander
Honorary Consultant,
University of Aberdeen

12.25 – 12.45 **General discussion**

12.45 – 14.00 **Lunch**
Chairperson: **Dr Arnon Bentovim**
Consultant Psychiatrist
Great Ormond Street Hospital for
Children NHS Trust, London

14.00 – 14.40 **Overview of torture**
Dr Stuart Turner
Medical Director
Camden and Islington Community
Health Services NHS Trust, London

14.40 – 15.20 **Medical Foundation for Treatment
of Victims of Torture**
Speaker to be confirmed

15.20 – 15.35 **Tea**

15.35 – 16.15 **Hostages as victims**
Dr Gordon Turnbull
Consultant Psychiatrist
Ticehurst House Hospital,
Wadhurst, East Sussex

16.15 – 16.55 **Re-entry for hostages**
Speaker to be confirmed

16.55 – 17.15 **General discussion**

Friday 24 February 1995

09.00 – 09.30 **Registration**
Chairperson: **Lady Daphne Vane**
Family Consultant

9.30 – 10.10 **Dissociative Disorders:**
An overview
Dr Elizabeth Tylden
Consultant Psychiatrist, London

10.10 – 10.50 **Treatment of dissociative
disorders and complex
post traumatic stress disorder**
Dr Sandra Bloom
Philadelphia, USA

10.50 – 11.05 **Coffee**

11.05 – 11.45 **False memory – Fact or fantasy**
Dr Paul R McHugh
Director and Psychiatrist-in-Chief
John Hopkins Medical Institution,
Baltimore, USA

11.45 – 12.25 **Overview of cults**
Dr Bryan Tully
Chartered Clinical and Forensic
Psychiatrist, London

12.25 – 12.45 **General discussion**

12.45 – 14.00 **Lunch**
Chairperson: **Professor William Yule**
Head of Psychology Services
Institute of Psychiatry, London

14.00 – 14.40 **Impact of cults on family**
Lady Daphne Vane,
Family Consultant

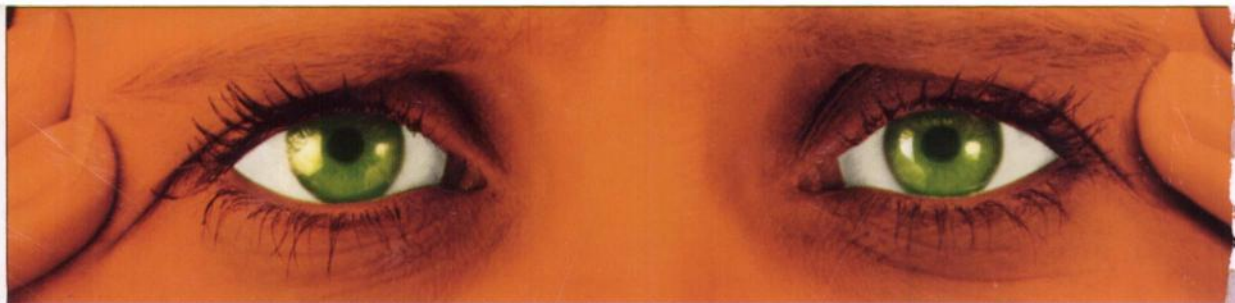
14.40 – 15.20 **Re-entry**
Mr Graham Baldwin
Director, Catalyst, Retford

15.20 – 15.35 **Tea**

15.35 – 16.15 **Legal implications of cults**
Mrs Simonetta Hornby
Hornby & Levy Solicitors, London

16.15 – 16.45 **General discussion and
conference close**

For further information on the above conference please contact
Jackie Ford, Conference Manager, PTS Mark Allen International Conferences Ltd, Croxted Mews,
286A-288 Croxted Road, London SE24 9BY. Tel: 081-671 7521 Fax: 081-671 7327.



Depressed and anxious, but there's no need for daytime sedation.



Treat them with Prozac.

50-70% of patients with depression also have associated anxiety,¹ but today you can treat them just as effectively without daytime sedation.

Prozac lifts depression and associated anxiety as effectively as tricyclics^{2,4} while offering patients a natural nights sleep followed by a sedation-free day.^{4,6}

For today's response to depression, rely on Prozac, the World's No. 1 prescribed brand antidepressant.⁵

Once a day

PROZAC
fluoxetine

The World's No. 1 prescribed brand name in depression

'PROZAC' (FLUOXETINE HYDROCHLORIDE) ABBREVIATED PRESCRIBING INFORMATION

Presentation Capsules containing 20mg fluoxetine, as the hydrochloride. Liquid containing 20mg fluoxetine, as the hydrochloride, per 5ml syrup. **Uses** *Depression:* Treatment of the symptoms of depressive illness. *Obsessive-compulsive disorder. Bulimia nervosa:* For the reduction of binge-eating and purging activity. **Dosage and Administration** (For full information, see data sheet.) For oral administration to adults only. *Depression - adults and the elderly:* A dose of 20mg/day is recommended. *Obsessive-compulsive disorder:* 20mg/day to 60mg/day. A dose of 20mg/day is recommended as the initial dose. *Bulimia - adults and the elderly:* A dose of 60mg/day is recommended. Because of the long elimination half-lives of the parent drug (1-3 days after acute administration; may be prolonged to 4-6 days after chronic administration) and its major metabolite (average 9.3 days), active drug substance will persist in the body for several weeks after dosing is stopped. The capsule and liquid dosage forms are bioequivalent. *Children:* Not recommended. *Patients with renal and/or hepatic dysfunction:* See 'Contra-indications' and 'Precautions' sections. **Contra-indications** Hypersensitivity to fluoxetine. Prozac should not be administered to patients with severe renal failure (GFR <10ml/min). *Usage in nursing mothers:* Prozac should not be prescribed to nursing mothers. *Monoamine oxidase inhibitors:* At least 14 days should elapse between discontinuation of a MAOI and initiation of treatment with Prozac. At least five weeks should elapse between discontinuation of Prozac and initiation of therapy with an MAOI. Serious, sometimes fatal reactions (including hyperthermia, rigidity, myoclonus, autonomic instability and mental status changes that include extreme agitation, progressing to delirium and coma) have been reported with concomitant use or when fluoxetine had been recently discontinued and a MAOI started. Some cases presented with features resembling neuroleptic malignant syndrome. **Warnings** *Rash and allergic reactions:* Angioneurotic oedema, urticaria and other allergic reactions have been reported. Upon appearance of rash, or of other allergic phenomena for which an alternative aetiology cannot be identified, Prozac should be discontinued. *Pregnancy:* Use of Prozac should be avoided unless there is no safer alternative. **Precautions** Prozac should be discontinued in any patient who develops seizures. Prozac should be avoided in patients with unstable epilepsy; patients with controlled epilepsy should be carefully monitored. There have been rare reports of prolonged seizures in patients on fluoxetine receiving ECT treatment. A lower dose of Prozac, eg, alternate day dosing, is recommended in patients with significant hepatic dysfunction or mild to moderate renal failure (GFR 10-50ml/min). Caution is advisable when Prozac is used in patients with acute cardiac disease. Prozac may cause weight loss which may be undesirable in underweight depressed patients. In diabetics, fluoxetine may alter glycaemic control. There have been reports of abnormal bleeding in several patients, but causal relationship to fluoxetine and clinical importance are unclear. **Drug interactions:** Increased (with lithium toxicity) or decreased lithium levels have

been reported. Lithium levels should be monitored. Because fluoxetine's metabolism involves the hepatic cytochrome P450IID6 isoenzyme system, concomitant therapy with other drugs also metabolised by this system, and which have a narrow therapeutic index (eg, carbamazepine, tricyclic antidepressants), should be initiated at or adjusted to the low end of their dose range. Greater than 2-fold increases of previously stable plasma levels of cyclic antidepressants have been observed when Prozac has been administered in combination. Agitation, restlessness and gastrointestinal symptoms have been reported in a small number of patients receiving fluoxetine in combination with tryptophan. For further information, see data sheet. **Adverse Effects** Asthenia, fever, nausea, diarrhoea, dry mouth, appetite loss, dyspepsia, vomiting, headache, nervousness, insomnia, drowsiness, anxiety, tremor, dizziness, fatigue, decreased libido, seizures, hypomania or mania, dyskinesia, movement disorders, neuroleptic malignant syndrome-like events, pharyngitis, dyspnoea, pulmonary events (including inflammatory processes and/or fibrosis), rash, urticaria, vasculitis, serum sickness, anaphylactoid reactions, hair loss, excessive sweating, sexual dysfunction. The following have been reported in association with fluoxetine but no causal relationship has been established: aplastic anaemia, cerebral vascular accident, confusion, ecchymoses, eosinophilic pneumonia, gastro-intestinal haemorrhage, hyperprolactinaemia, immune-related haemolytic anaemia, pancreatitis, pancytopenia, suicidal ideation, thrombocytopenia, thrombocytopenic purpura, vaginal bleeding after drug withdrawal and violent behaviour. Hyponatraemia (including serum sodium below 110mmol/l) has been rarely reported. This appears to be reversible upon discontinuation. **Overdosage** On the evidence available, fluoxetine has a wide margin of safety in overdose. Since introduction, reports of death, attributed to overdose of fluoxetine alone, have been extremely rare. One patient who reportedly took 3000mg of fluoxetine experienced 2 grand mal seizures that remitted spontaneously. **Legal Category** POM **Product Licence Numbers** 0006/0195, 0006/0272. **Basic NHS Cost** £20.77 per pack of 30 capsules. £67.85 per pack of 98 capsules. £19.39 per 70ml bottle. **Date of Preparation or Last Review:** April 1994. **Full Prescribing Information is Available From** Distia Products Limited, Dextra Court, Chapel Hill, Basingstoke, Hampshire RG21 2SY Telephone: Basingstoke (0256) 52011. 'PROZAC' is a Distia trade mark. **References:** 1. Kaplan H.L., Sadock B.J. Pocket Handbook of Clinical Psychiatry, 1990 2. Harris, et al. Data on file, Distia Products Ltd. 3. Judd F, J.A.M.A., S.E.A., 1991; (Dec. Suppl.): 31-33 4. Stokes P.E., Clin Therap., 1993; 15(2): 216-243 5. Data on file, Distia Products Ltd. 6. Fairweather D.B., et al, Human Psychopharmacol, 1993; 8: 41-47.

Pz 589 prepared May 1994

