

Coherent motions in a turbulent wake of an axisymmetric bluff body

Fengrui Zhang^{1,†} and Yulia T. Peet¹

¹School for Engineering of Matter, Transport and Energy, Arizona State University, Tempe, AZ 85287, USA

(Received 31 May 2022; revised 30 October 2022; accepted 8 February 2023)

The wake flow past an axisymmetric body of revolution at a diameter-based Reynolds number $Re = u_\infty D/\nu = 5000$ is investigated via a direct numerical simulation. The study is focused on identification of coherent vortical motions and the dominant frequencies in this flow. Three dominant coherent motions are identified in the wake: the vortex shedding motion with the frequency of $St = fD/u_\infty = 0.27$, the bubble pumping motion with $St = 0.02$, and the very-low-frequency (VLF) motion originated in the very near wake of the body with the frequency $St = 0.002\text{--}0.005$. The vortex shedding pattern is demonstrated to follow a reflectional symmetry breaking mode, whereas the vortex loops are shed alternately from each side of the vortex shedding plane, but are subsequently twisted and tangled, giving the resulting wake structure a helical spiraling pattern. The bubble pumping motion is confined to the recirculation region and is a result of a Görtler instability. The VLF motion is related to a stochastic destabilisation of a steady symmetric mode in the near wake and manifests itself as a slow, precessional motion of the wake barycentre. The VLF mode with $St = 0.005$ is also detectable in the intermediate wake and may be associated with a low-frequency radial flapping of the shear layer.

Key words: wakes, vortex dynamics, separated flows

1. Introduction

Coherent motions in turbulent flows, which refer to the motions of organised, statistically significant eddy structures, persistent for relatively long time periods (Hussain 1986; Robinson 1991; Adrian, Sakievich & Peet 2017), are of critical importance due to a high amount of momentum and energy that they carry (Balakumar & Adrian 2007; Vanierschot & Van Den Bulck 2011; Gayme & Minnick 2019), and their strong influence on forces and moments acting on a body submerged in a turbulent flow (Pier 2008;

† Email address for correspondence: fzhang82@asu.edu

© The Author(s), 2023. Published by Cambridge University Press. This is an Open Access article, distributed under the terms of the Creative Commons Attribution-NonCommercial-NoDerivatives licence (<http://creativecommons.org/licenses/by-nc-nd/4.0>), which permits non-commercial re-use, distribution, and reproduction in any medium, provided that no alterations are made and the original article is properly cited. The written permission of Cambridge University Press must be obtained prior to any commercial use and/or adaptation of the article.

Grandemange *et al.* 2012; Pavia *et al.* 2019), as well as noise production (Morrison 1982; Guitton *et al.* 2008). Massively separated flows and bluff body wakes are some examples of the systems, where strong coherent structures develop and significantly influence the flow dynamics (Berger, Scholz & Schumm 1990; Rigas *et al.* 2014; Wu, Meneveau & Mittal 2020). Bluff body wakes are important to understand due to their significance in transportation industry, wind-energy capture, particle–flow interactions and geophysical flows.

Axisymmetric bluff body wakes, i.e. the wakes behind the spheres, disks and bodies of revolution (the last is the subject of the current paper), remain axisymmetric and steady only at very low Reynolds numbers. For example, for a case of a sphere, the first bifurcation at $Re \approx 210$ (Magarvey & Bishop 1961; Wu & Faeth 1993) results in a loss of axisymmetry and yields a steady planar symmetric structure with two vortex lobes developed on each side of a reflectional symmetry plane (a reflectional symmetric steady state or SS), see figure 1(a). The second bifurcation (Hopf bifurcation), renders the flow unsteady and leads to a periodic shedding of vortices (Natarajan & Acrivos 1993; Pier 2008). In the case of a sphere, the resulting unsteady wake preserves a planar symmetry, with the vortex loops of opposite signs shedding alternately from each side of a plane (a reflectional symmetry preserving state or RSP). As Reynolds number increases further, the appearance of additional frequencies in the temporal spectra is reported (Sakamoto & Haniu 1990; Tomboulides & Orszag 2000), until, eventually, the wake transitions to a turbulent state at around $Re \approx 900$. In turbulent flows, the symmetries detected in a laminar regime reemerge as coherent structures (Grandemange, Gohlke & Cadot 2014; Rigas *et al.* 2014; Pavia *et al.* 2019). Consequently, vortex shedding in a form of alternating vortex loops (RSP state) has been reported for sphere wakes for a variety of Reynolds numbers (Mittal, Wilson & Najjar 2002; Rodriguez *et al.* 2011; Vilaplana *et al.* 2013). A distinct peak corresponding to the vortex shedding frequency, typically in the range of $St \sim 0.1\text{--}0.2$, is detected in a turbulent spectra of bluff body wakes (Achenbach 1974; Taneda 1978; Kim & Durbin 1988). Provided the Reynolds number is sufficiently high, a statistical axisymmetry in the wake is recovered through a random reorientation of the vortex shedding plane, which eventually explores all possible azimuthal positions with equal probability (Achenbach 1974; Rodriguez *et al.* 2011; Grandemange *et al.* 2014).

Although the RSP vortex shedding mode is prevalent in flows past a sphere, wakes past blunt-edged bodies may follow a different route. Bury & Jardin (2012), through direct numerical simulations (DNS) of transitional axisymmetric bluff body wakes, demonstrated that the RSP state was relatively short-lived as Reynolds number was increased, giving rise to a reflectional symmetry breaking (RSB) state prior to transition to chaos. Fabre, Auguste & Magnaudet (2008) and Meliga, Chomaz & Sipp (2009) identified the RSB mode as the *first* stable mode after the Hopf bifurcation from the corresponding steady (SS) mode for the flow past a circular disk. In fact, they presented a bifurcation diagram for the disk flow (figure 1b) showing that the RSB mode represents a stable branch for the disk flow, whereas the RSP mode represents an unstable branch, which is opposite to that of a sphere (figure 1a). RSB mode is characterised by twisting of two opposite-sign vortex loops around each other, thus resulting in a loss of a planar symmetry (Fabre *et al.* 2008; Bury & Jardin 2012). RSB mode was numerically detected in a flow past a circular disk at a Reynolds number of 10^4 (Yang *et al.* 2014), and experimentally in a flow past an axisymmetric bluff body at $Re = 3.2 \times 10^5$ (Pavia *et al.* 2019). In both these occurrences, a random reorientation of the vortex shedding plane was still observed.

Coherent motions in a turbulent wake of an axisymmetric body

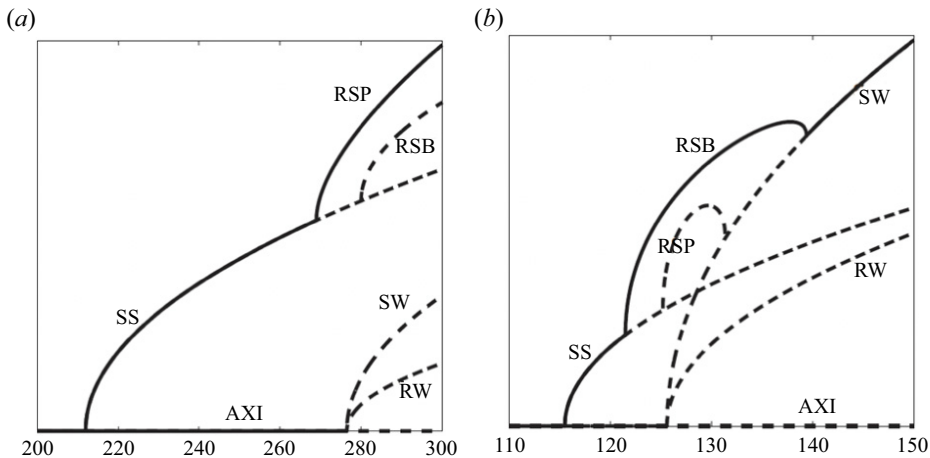


Figure 1. Theoretical bifurcation diagrams for (a) a sphere and (b) a flat circular disk. Solid (dashed) lines denote stable (unstable) branches. Horizontal axis represents Reynolds number. Reprinted with permission from D. Fabre, F. Auguste & J. Magnaudet, ‘Bifurcations and symmetry breaking in the wake of axisymmetric bodies’, *Phys. Fluids*, vol. 20, issue 5, 2008, 051702. Copyright 2008 AIP Publishing.

Rigas *et al.* (2014) related the reorientation of a vortex shedding plane to a low-frequency stochastic motion that occurs in the near wake of the axisymmetric body and experimentally measured the associated frequency as $St \sim 0.002$. The existence of this, what we call a very-low-frequency (VLF) motion, was further confirmed in experiments of Gentile *et al.* (2016) and Pavia *et al.* (2019) for axisymmetric bluff bodies, with a similar frequency of 0.001–0.002. In these studies, the VLF motion was attributed to a destabilisation of a steady symmetric (SS) mode by stochastic fluctuations. Rigas *et al.* (2015) presented a stochastic diffusion model to describe the dynamics of the VLF processes in the axisymmetric wakes, similar to the models that were previously developed to explain the low-frequency motions in Rayleigh–Bénard convection (Brown & Ahlers 2008) and a swirling flow (de la Torre & Burguete 2007). As the VLF motion seems to be originated from the SS mode, it can technically occur with both the RSP and RSB vortex shedding scenarios. In fact, the flow past a body of revolution was documented to be in the RSP mode in Gentile *et al.* (2016) and Zhu & Morrison (2021), whereas the co-existence of the RSP and RSB states was reported in Pavia *et al.* (2019).

The current paper focuses on identification and characterisation of coherent motions in the wake of an axisymmetric body of revolution with a blunt trailing edge at $Re = 5000$. Although coherent structures in the wake of a sphere are a subject of many previous investigations (Achenbach 1974; Taneda 1978; Yun, Kim & Choi 2006; Rodriguez *et al.* 2011) and wakes behind the disks also received some attention (Carmody 1964; Berger *et al.* 1990; Yang *et al.* 2014), there are, however, significantly fewer studies concerning the wakes of axisymmetric bodies. Previously mentioned investigations (Rigas *et al.* 2014; Gentile *et al.* 2016; Pavia *et al.* 2019; Zhu & Morrison 2021) concentrated mostly on the near wake of the flow ($x/D \leq 2$), whereas studies at higher Reynolds numbers (Jiménez, Hultmark & Smits 2010; Ashok, Buren & Smits 2015; Posa & Balaras 2016; Kumar & Mahesh 2018) did not investigate coherent structures. The intended contribution of the present paper is to draw a connection between coherent motions in the near wake of the body and the manifestation of these motions, or a lack of thereof, in the intermediate wake. To this end, we conduct DNS of the flow, extending the simulation time to over 1000 vortex

shedding cycles, in order to detect the VLF motions. In particular, with the current DNS investigation we aim to answer the following questions.

- (1) What are the dominant frequencies and the associated coherent motions in the near wake and in the intermediate wake of the body at this Reynolds number?
- (2) How do these motions develop and evolve: e.g. can the VLF motions originating upstream of a vortex shedding location be felt in the intermediate wake?
- (3) What spatial structures are associated with different coherent motions?

The paper is organised as follows. In § 2, we introduce the problem set-up, including the description of the numerical methodology, geometry and the computational grid. In § 3, we present the results of the study, focusing on the global mode analysis and discussion of coherent motions. Conclusions are given in § 4.

2. Problem set-up

2.1. Equations and numerical method

In this study, we solve incompressible Navier–Stokes equations

$$\left. \begin{aligned} \frac{\partial \mathbf{u}}{\partial t} + \mathbf{u} \cdot \nabla \mathbf{u} &= -\nabla p + \nu \nabla^2 \mathbf{u}, \\ \nabla \cdot \mathbf{u} &= 0 \end{aligned} \right\} \quad (2.1)$$

for a flow over a body of revolution using a DNS technique. In (2.1), \mathbf{u} is the velocity, p is the pressure and ν is the kinematic viscosity. Governing equations are solved with an open-source spectral-element solver Nek5000 (Fischer *et al.* 2015). For the spatial discretisation, it utilises a spectral element method (SEM) that possesses advantages of the geometric flexibility of finite volume methods and the spectral convergence of global spectral methods (Patera 1984; Deville, Fischer & Mund 2002). SEM is based on a weak formulation of governing equations. The solutions are sought for velocity and pressure approximated by high-order polynomials. For example, for velocity in an element Ω^e , we have the approximation $\mathbf{u}(\mathbf{x})|_{\Omega^e} = \sum_{i,j,k=1}^N \mathbf{u}_{ijk}^e h_i(r) h_j(s) h_k(\zeta)$, where the basis functions $h_i(r)$, $i = 0, \dots, N$, are Lagrange interpolating polynomials of degree N defined on Gauss–Legendre–Lobatto (GLL) quadrature points, ξ_j , such that $h_i(\xi_j) = \delta_{ij}$ (Deville *et al.* 2002). In order to avoid the spurious pressure modes, the pressure field is approximated with a lower polynomial order of $N - 2$ (Fischer 1997; Deville *et al.* 2002). For the temporal discretisation, a second-order backward differentiation scheme is employed for the diffusion terms and a second-order explicit extrapolation scheme is used for the convection terms. To eliminate the aliasing error, $3(N + 1)/2$ nodes are used when applying the quadrature rule to nonlinear terms (Mengaldo *et al.* 2015). The primitive variables are filtered using a polynomial filter with a low weight of $\alpha = 0.01$ for stabilisation (Fischer & Mullen 2001). SEMs provide minimal numerical dispersion and dissipation errors and are advantageous for DNS of turbulent flows (Kreiss & Olinger 1972; El Khoury *et al.* 2013; Wang *et al.* 2013).

2.2. Geometry and computation grid

The geometry of the body of revolution is modelled after Gentile *et al.* (2016) and consists of a cylinder with a spherically blunted ogive nose and a blunt trailing edge schematically illustrated in figure 2. All geometrical variables are normalised with the

Coherent motions in a turbulent wake of an axisymmetric body

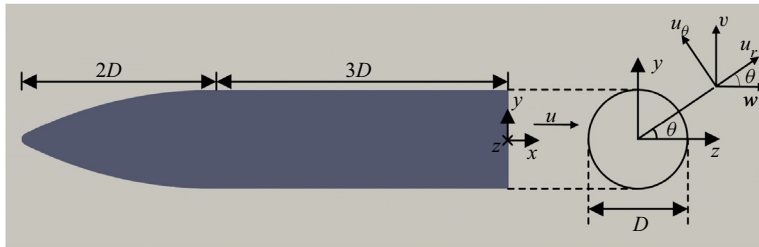


Figure 2. Geometry of the body of revolution in the current DNS consists of an ogive spherically blunted body of the length $2D$ followed by a circular cylinder of the length $3D$, where D is the cylinder diameter. The model features zero pitch and yaw.

cylinder diameter D , and velocity variables are normalised with the free-stream velocity u_∞ . The direction that coincides with the body axis of rotation is denoted as the x axis, whereas a vertical-spanwise cross-sectional plane contains y and z axes. As in the experiments of Gentile *et al.* (2016), the body axis of rotation is aligned with the free-stream, and there is no pitch or yaw on the model. In contrast to the experiments, the boundary layer on the model surface is not tripped, resulting in a laminar boundary layer through the entire length of the body. The model support present in the experiments is not included in the DNS. Finally, the Reynolds number of the flow is $Re = 5000$ in the current DNS, whereas it is $Re = 6.7 \times 10^4$ in the experiments. Boundary conditions are set as the no-slip on the model surface, uniform free-stream velocity u_∞ is specified at the inflow and the stabilised boundary conditions (Dong, Karniadakis & Chrissostomidis 2014) are used at the outflow. Initial conditions in the current DNS correspond to an unperturbed free-stream.

The computational domain is cylindrical, with the radius of $7.5D$ and the length of $32D$, as can be viewed in figure 3, which shows a slice of the domain in a streamwise-radial plane. The trailing edge of the body is located at $x = 0$. For constructing the mesh, an O-grid meshing strategy is employed. A partial view of the computational mesh utilised in this study can be seen in figure 4, where only the element boundaries are shown. As Nek5000 requires hexahedral meshes, the generated mesh has all hexahedral elements. The mesh is generated in Ansys Icem and converted to the format that can be read by Nek5000 using the open-source exo2nek converter (Fischer *et al.* 2015). During the mesh generation procedure, the mesh constructed by Ansys Icem is enhanced from Hex8 to Hex27 elements for a more accurate resolution of the curvilinear geometry. The current simulation employs seventh-order polynomials in each coordinate direction resulting in a 8^3 nodal stencil within each element (for velocity; fifth-order polynomials and 6^3 stencil for pressure). The time step in the current simulations is equal to $\Delta t u_\infty / D = 4 \times 10^{-4}$ in non-dimensional units. The total simulation time corresponds to $t_{max} = 4160D/u_\infty$, or approximately 1123 vortex shedding cycles. Statistics are being collected after $t_{min} = 1260D/u_\infty$ (340 vortex shedding cycles), leading to the total time of the statistical averaging as $t_{stat} = t_{max} - t_{min} = 2900D/u_\infty$ (783 vortex shedding cycles). Snapshots for statistical analysis are collected every 1500 time steps, leading to $\Delta t_{snap} = 0.6D/u_\infty$ as the temporal separation between snapshots. Appendix A compares the grid resolution and the statistical averaging time for the current DNS with the other DNS studies of wake flows at comparable Reynolds numbers, whereas Appendix B presents the validation of the numerical methodology.

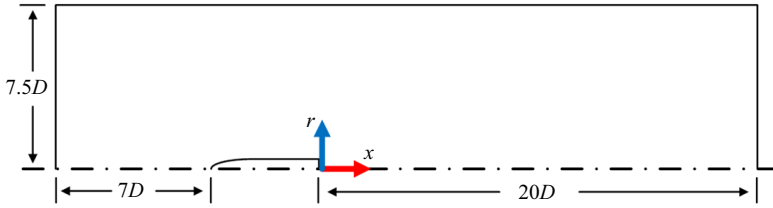


Figure 3. Slice of the computational domain in a streamwise-radial plane. The domain is cylindrical with a radius $7.5D$ and a total streamwise length of $32D$. The upstream portion in front of the body is $7D$, the body length is $5D$ and the downstream portion is $20D$. The trailing edge of the body is at $x = 0$.

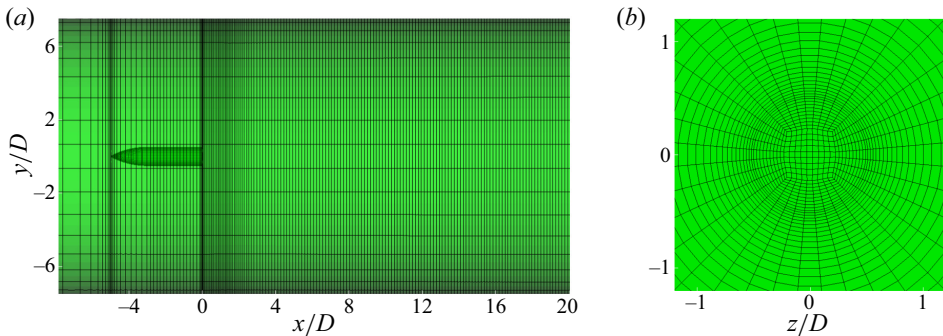


Figure 4. A partial view of the computational mesh. Only element boundaries are shown. (a) Streamwise-vertical cross-sectional view. Refinement around the leading and trailing edges of the body is visible. (b) Spanwise-vertical cross-sectional view showing a slice of the mesh behind the body trailing edge.

2.3. Post-processing and notation

As the model geometry and the computational domain are both axisymmetric, it is convenient for analysis to define the radial velocity, u_r , and the azimuthal velocity, u_θ , on the cross-sectional planes (see figure 2). To compute statistically averaged quantities, we introduce the averaging operator $\langle \cdot \rangle$, where the subscript after the operator denotes the variable with respect to which the averaging is performed, e.g. $\langle \cdot \rangle_\theta$ and $\langle \cdot \rangle_t$ give the averages over the azimuthal direction and over time, respectively, as

$$\langle \phi \rangle_\theta = \frac{1}{2\pi} \int_0^{2\pi} \phi(\theta, \text{arg}) \, d\theta, \tag{2.2}$$

$$\langle \phi \rangle_t = \frac{1}{t_{\text{stat}} - t_{\text{min}}} \int_{t_{\text{min}}}^{t_{\text{max}}} \phi(t, \text{arg}) \, dt, \tag{2.3}$$

with $t_{\text{stat}} = t_{\text{max}} - t_{\text{min}}$, $t_{\text{min}} = 1260D/u_\infty$, $t_{\text{max}} = 4160D/u_\infty$, corresponding to the start and the end of collecting statistics, as defined previously. The argument ‘arg’ in the brackets of the function ϕ in (2.2), (2.3) refers to the remaining arguments of the function that is being averaged, depending on the context. Unless otherwise noted, the definition of the averaging operator $\langle \cdot \rangle_t$ in the current paper follows the convention of (2.3), with the limits t_{min} , t_{max} as specified.

A fluctuation of the instantaneous quantity $\phi(x, y, z, t)$ is defined as

$$\phi'(x, y, z, t) = \phi(x, y, z, t) - \langle \phi(x, y, z, t) \rangle_t. \tag{2.4}$$

Furthermore, for any given temporally dependent signal $\phi(t)$, its power spectral density (PSD) is defined as

$$\text{PSD}(St) = \left| \int_{t_{min}}^{t_{max}} \phi(t) \exp\left(-\frac{i2\pi(St)u_{\infty}t}{D}\right) dt \right|^2, \quad (2.5)$$

where i is the imaginary unit and $St = fD/u_{\infty}$. We also define the normalised PSD as

$$\text{Normalised PSD}(St) = \frac{\text{PSD}(St)}{\max_{St} \text{PSD}(St)}. \quad (2.6)$$

For the modal analysis, uniformly spaced data from the wake region $(x, y, z) \in [0, 20D] \times [-2D, 2D] \times [-2D, 2D]$ is collected during the interval $t \in [t_{min}, t_{max}]$, with a temporal separation of $\Delta t_{snap} = 0.6D/u_{\infty}$, leading to the total of $P = 4836$ snapshots. The spatiotemporal data for u' , u'_r and u'_θ is arranged into the matrix $X = [X_{np}]$ of the size $N \times P$, with $N = 3S$, and S being the number of gridpoints in the post-processing grid (Taira *et al.* 2017). For the proper orthogonal decomposition (POD), a singular value decomposition of the matrix X is performed as $X = USV^*$, with $U \in \mathbb{C}^{N \times N}$ corresponding to the spatial POD modes, $S \in \mathbb{R}^{N \times P} = \text{diag}\{\sigma_p\}$ storing the energy of the modes, and $V \in \mathbb{C}^{P \times P}$ containing the temporal coefficients of the modes. For the dynamic mode decomposition (DMD), the snapshots in the matrix X are arranged into two matrices $Y = [X_1 \ X_2 \ \dots \ X_{P-1}]$ and $Y' = [X_2 \ X_3 \ \dots \ X_P]$, where X_i denotes the i th column of X . Relating the two matrices as $Y' = AY$, DMD modes (ψ_k) and their frequencies (ω_k) are associated with the eigenvectors (w_k) and eigenvalues (λ_k) of the reduced matrix \tilde{A} obtained from A via its projection onto a truncated set of POD modes of Y (Taira *et al.* 2017; Wu *et al.* 2020). Each temporally growing or decaying mode can then be reconstructed as $X_{DMD,k}(t) = b_k \psi_k \exp(\omega_k t)$, with $\omega_k = \ln(\lambda_k)/\Delta t_{snap}$ being the complex frequency, and $b = \Psi^{-1}X_1$ being the vector containing the amplitudes of the modes (matrix Ψ is constructed from the DMD modes ψ_k as its columns). Finally, the frequency of each mode f_k is related to its complex frequency as $f_k = 2\pi \text{Im}(\omega_k)$. Owing to azimuthal periodicity of the data, the azimuthal modes can be extracted as (Rigas *et al.* 2014; Sakievich, Peet & Adrian 2020)

$$\hat{\phi}_m(r, x, t) = \frac{1}{2\pi} \int_0^{2\pi} \phi(\theta, r, x, t) e^{-im\theta} d\theta. \quad (2.7)$$

3. Results

3.1. Global description of the wake flow

3.1.1. Schematic view of coherent motions

The dominant coherent structure systems developing in the wake of an axisymmetric body with the blunt trailing edge, as detected in the current study, are schematically illustrated in [figure 5](#). They consist of the VLF motions originating behind the trailing edge, potentially associated with the barycentre precession (with the frequencies f_p), the bubble pumping (shrinkage and enlargement) motions of a recirculation bubble (with the frequencies f_b) and the vortex shedding motions in the shear layer (with the frequencies f_v). These modes, as well as their associated normalised frequencies ($St = fD/u_{\infty}$), as detected in the current study, are summarised in [table 1](#). To better illustrate the global structure of the wake, we also present the mean streamwise velocity and the instantaneous spanwise vorticity across the plane of symmetry at $z = 0$ in [figure 6](#).

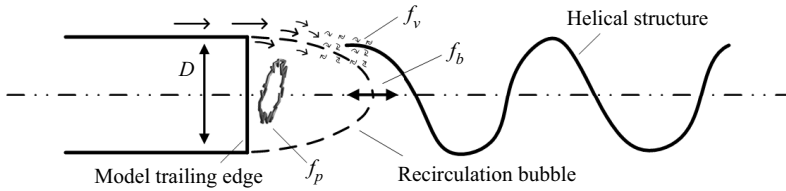


Figure 5. A schematic representation of coherent structures behind the axisymmetric body with a blunt trailing edge detected in the current study. Here f_v denotes vortex shedding frequencies, f_b denotes bubble pumping frequencies and f_p denotes precession frequencies.

Coherent motion	Place of origin	Strouhal	Azimuthal mode	POD mode
VLF	Very near wake	0.001–0.005	$ m = 1 \rightarrow m = 2$	6, 7
Bubble pumping	Separation bubble	0.02	$ m = 0$	5–7
Vortex shedding	Shear layer	0.27, 0.55	$ m = 1, 2$	1–4

Table 1. Dominant coherent motions, their frequencies and the mode identification results.

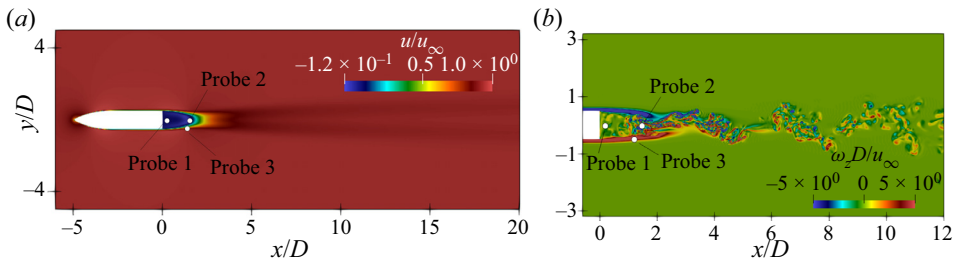


Figure 6. Visualisations of the wake flow across a symmetry plane, $z = 0$: (a) mean streamwise velocity; (b) instantaneous spanwise vorticity.

3.1.2. Global modes

In order to understand the low-dimensional structure of the wake, we conduct the three-dimensional POD analysis. Figure 7(a) illustrates the energy content of the POD modes of a decreasing order, and figure 8 shows the spatial structure of the first seven POD modes of u' fluctuations projected onto a $z = 0$ slice, as well as the normalised PSD of the time-dependent mode coefficients, computed using (2.5) and (2.6).

The first two most energetic POD modes are dominated by the vortex shedding motions with the frequency of $St = 0.27$, whereas the second two modes correspond to the double vortex shedding motions with $St = 0.55$. The fifth mode captures the bubble pumping motion with $St = 0.02$ and is locally confined to the recirculation region behind the model trailing edge. The modes 6 and 7 carry the imprints of the VLF motions, which originate in the near wake of the body but propagate into the intermediate wake.

POD, by construction, identifies the most energetic modes of the flow, which can however represent a combination of different frequencies. To isolate the motions of specific frequencies, three-dimensional DMD decomposition is performed. Figure 7(b) presents the spectrum of the three-dimensional DMD modes. As in Wu *et al.* (2020), the spectrum of the flow is quiet broadband, indicating a significance of multiple frequency contributions in a turbulent wake dynamics. However, a distinct peak at $St = 0.27$ (vortex shedding frequency) can be appreciated, followed by several high-amplitude modes around the

Coherent motions in a turbulent wake of an axisymmetric body

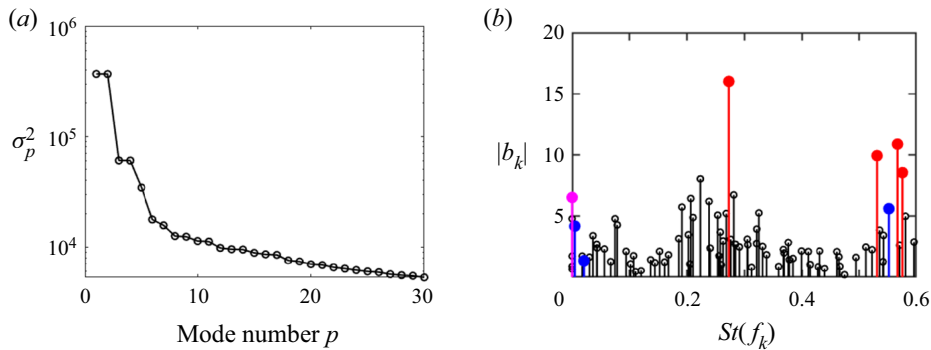


Figure 7. (a) Turbulent energy content, σ_p^2 , of the first 30 POD modes; σ_p^2 correspond to the cumulative energy over all three velocity components. (b) Spectrum of three-dimensional DMD modes. Red circles correspond to the first four modes with the highest amplitude ($St = 0.27, 0.56, 0.53, 0.58$), blue circles are the modes with the frequencies closest to $St = 0.55, 0.02, 0.005$, whereas the magenta circle represents the strongest stationary mode.

double vortex shedding frequency of $St = 0.55$. A relative significance of a VLF mode (with $St = 0.005$) is also notable. Of interest is also an existence of several stationary modes ($St = 0$) in the spectrum. The bubble pumping frequency ($St = 0.02$) is not strongly pronounced in the global spectrum, because it is highly localised in the recirculation region of the flow ($x/D \leq 1.6$). However, as we show later, it shows dominance in the near-wake dynamics. Figure 9 visualises the global structure of the modes corresponding to particular frequencies of interest: the top row of the figure plots the first four modes with the highest amplitude ($St = 0.27, 0.56, 0.53$ and 0.58), whereas the bottom row plots additional modes of interest, with the frequencies closest to those revealed from the POD analysis ($St = 0.55, 0.02, 0.005$) and the strongest stationary mode (with $St = 0$). We remark that the frequencies f_k of the DMD modes are related to the matrix eigenvalues λ_k and thus are the output of the DMD analysis. The exact values corresponding to the mode frequencies are rounded up for conciseness. The first highest-amplitude DMD mode corresponds to the pure vortex shedding mode. The vortex shedding mode is followed by the three modes close to the double vortex shedding frequency. Interesting to note is a distortion of these modes by small-scale turbulence, showing the significance of multiple scales and their interactions in the dynamics of turbulent separated flows, also noted in Wu *et al.* (2020). Although these distorted modes contribute to the DMD spectrum, they do not carry as much energy as the pure double vortex shedding mode with $St = 0.55$. This is evident from the 3D POD analysis, where the modes with $St = 0.55$ are detected as the most energetic modes followed by the vortex shedding modes (modes 3 and 4 in figure 8). A pure double vortex shedding mode, corresponding to the frequency of $St = 0.55$, is shown in figure 9(e). Pure vortex shedding and double vortex shedding modes represent a perfect helix and a double helix, respectively. The subsequent analysis in this article reveals the dominant physical mechanisms that give rise to this pattern. The bubble pumping mode (figure 9f) is indeed highly localised and confined to the near-wake region of the flow. The VLF mode ($St = 0.005$), on the other hand, bears a global presence in the wake. Of note is also an existence of a strong stationary mode ($St = 0$), closely resembling the structure of the VLF $St = 0.005$ mode. A notable feature is a transition of these two modes from a two-lobe structure (corresponding to the first azimuthal mode $|m| = 1$) in the near wake, to a four-lobe structure (commensurate with $|m| = 2$ mode) shortly after the vortex shedding processes begin ($x \approx 1.6D$). This transition is further revealed by the projection of the three-dimensional DMD modes onto cross-sectional slices along different streamwise

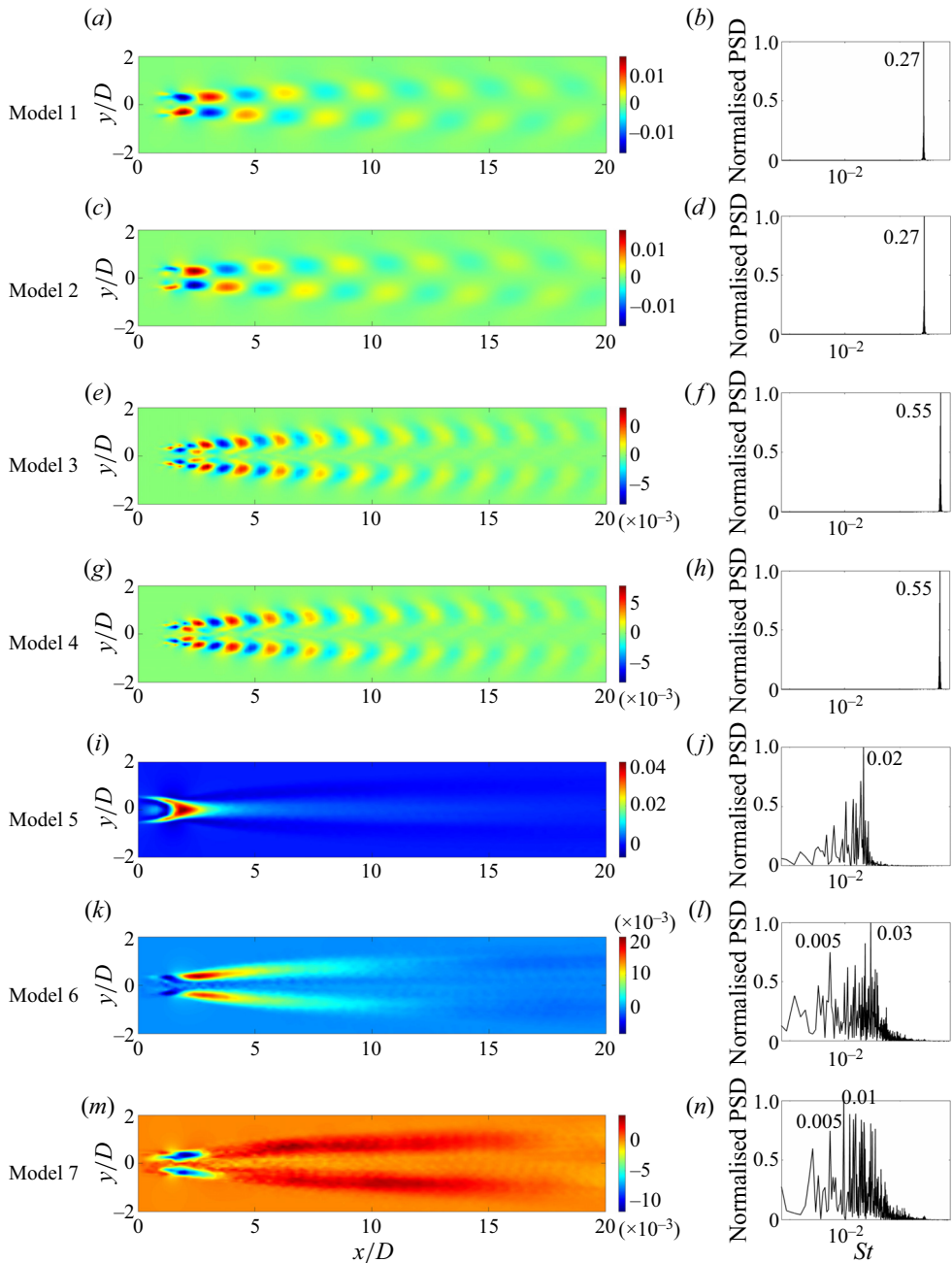


Figure 8. The first seven three-dimensional POD modes projected onto the slice $z = 0$ illustrated by u' (*a,c,e,g,i,k,m*), and the corresponding normalised PSD of the temporal coefficient of each mode (*b,d,f,h,j,l,n*).

locations in the wake, shown for $St = 0.005, 0.02, 0.27$ and 0.55 in figure 10. Although the azimuthal mode structure is discernible from the DMD projections, a formal azimuthal decomposition via (2.7) was also performed in this study, to corroborate these findings and the data in table 1 (not presented for brevity). Note that $St = 0.27$ and $St = 0.55$ modes are weak in the near wake, but pick up shortly after the vortex shedding begins. On the other

Coherent motions in a turbulent wake of an axisymmetric body

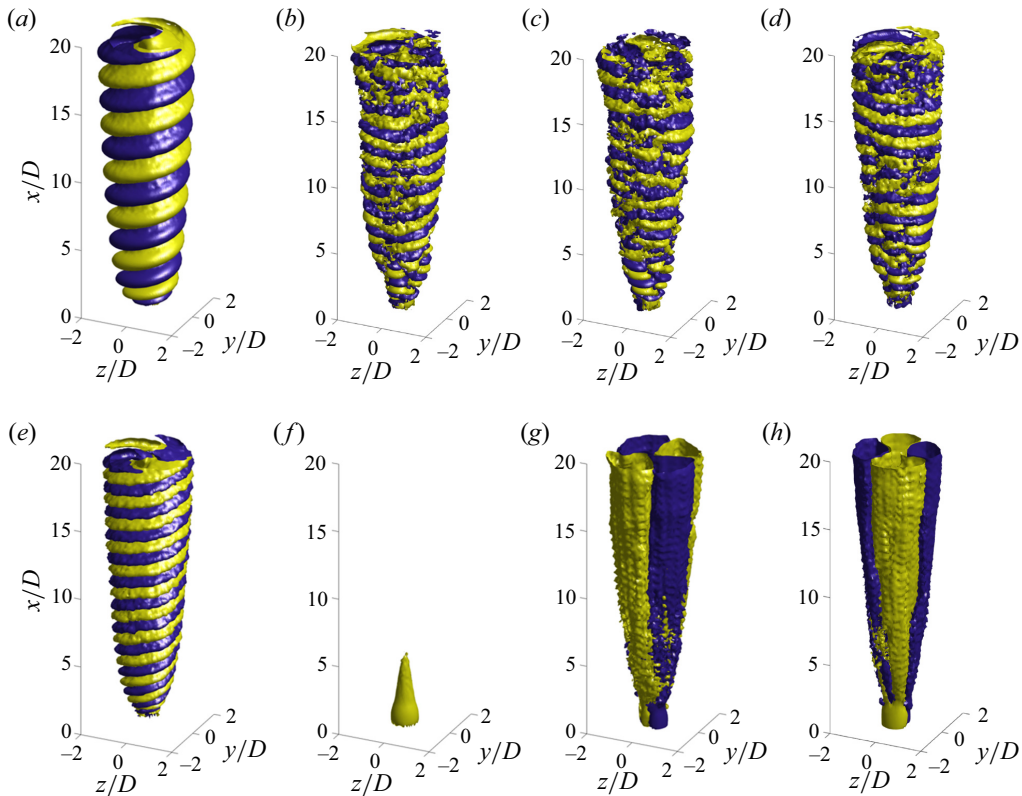


Figure 9. Three-dimensional DMD modes for different St numbers plotted using the isosurfaces of $\psi_k(u')$ [thresholded on 2×10^{-4} for all the modes except for 5×10^{-3} for (f)]: (a) $St = 0.27$, (b) $St = 0.57$, (c) $St = 0.53$, (d) $St = 0.58$, (e) $St = 0.55$, (f) $St = 0.02$, (g) $St = 0.005$ and (h) $St = 0$.

hand, the $St = 0.02$ mode is exceptionally strong at $x/D \leq 1.6$, but it weakens, diffuses and mingles with the VLF mode further downstream, losing its perfectly axisymmetric shape.

3.1.3. Barycentre dynamics

To relate the global structure of the modes identified in the previous section to the dynamic processes occurring in the wake, we look at the dynamics of the wake barycentre. The barycentre in this work is defined based on the momentum deficit formulation (Grandemange *et al.* 2012; Yang *et al.* 2014; Gentile *et al.* 2016) as

$$\left. \begin{aligned} y_b(x, t) &= \frac{\iint_A (u_\infty - u(x, y, z, t)) y \, dz \, dy}{\iint_A (u_\infty - u(x, y, z, t)) \, dz \, dy}, \\ z_b(x, t) &= \frac{\iint_A (u_\infty - u(x, y, z, t)) z \, dz \, dy}{\iint_A (u_\infty - u(x, y, z, t)) \, dz \, dy} \end{aligned} \right\} \quad (3.1)$$

where $A = \{r \in [0, 3D], \theta \in [0, 2\pi]\}$.

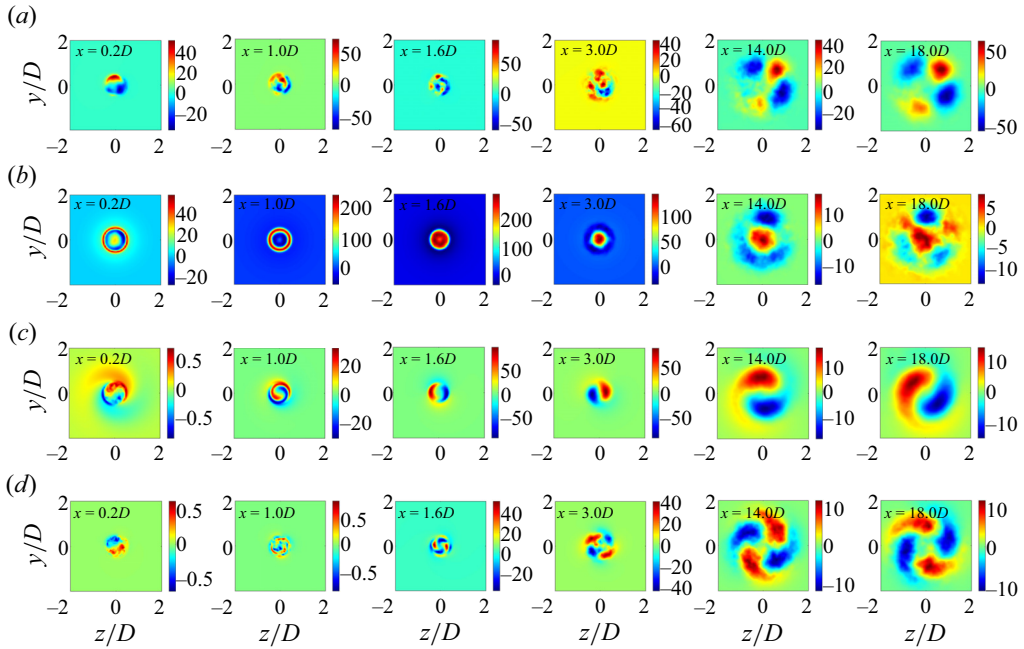


Figure 10. Three-dimensional DMD results on the cross-sectional slices at different streamwise locations for (a) $St = 0.005$, (b) $St = 0.02$, (c) $St = 0.27$ and (d) $St = 0.55$ using the field of u' . Values are multiplied by 10^4 for plotting.

The dynamics of the wake barycentre is investigated through the history and the corresponding power spectral analysis of the barycentre positions at selected streamwise locations. The corresponding results are shown in figure 11 for the intermediate wake and in figure 12 for the very-near wake. From figure 11, we observe that the wake barycentre rotates around the centreline and is more likely to locate off the centreline than at the centreline. The PSD results show that the radial motion of the barycentre in the intermediate wake is linked to the bubble pumping ($St = 0.02$), whereas the azimuthal motion is associated with the vortex shedding ($St = 0.27$). The super-harmonic of the vortex shedding frequency ($St = 0.55$) is also detected in the PSD at $x = 9.8D$. From the results, we can conclude that the wake barycentre at the cross-sectional planes is rotating about the geometric centreline with the vortex shedding frequency, which is consistent with the observed helical pattern of the corresponding global modes.

In the very near wake ($x < 1.6D$) the barycentre has more complicated dynamics. As illustrated in figure 12(a), on the one hand, the barycentre is rotating about an axis with approximately the vortex shedding frequency (as deduced by the fact that a full circle is completed in approximately 7 snapshots separated by $0.6D/u_\infty$). On the other hand, the axis of rotation is also moving. The motion of the axis does not show any particular well-defined pattern (figure 12b), but it also does not seem to be entirely random (cf. figure 12a). From the PSD of the barycentre position plotted in figure 12(c), vortex shedding frequency is captured, which is consistent with the inner circle trajectories observed in figure 12(a). However, two distinct peaks (one for radial position and one for azimuthal position) at very low frequencies are also detected for the barycentre motion in the very near wake, unlike at the other axial locations (figure 11). The lowest frequency of $St = 0.001$ is captured by an azimuthal motion of the barycentre, whereas a $St = 0.005$

Coherent motions in a turbulent wake of an axisymmetric body

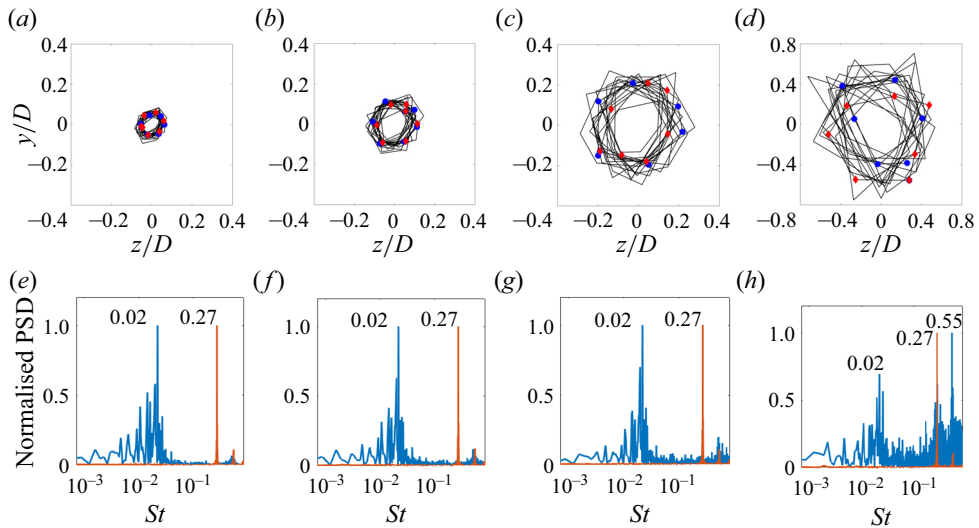


Figure 11. (a–d) History and (e–h) normalised PSD of the barycentre position at (a,e) $x = 1.6D$, (b,f) $x = 2.4D$, (c,g) $x = 4D$ and (d,h) $x = 9.8D$. Note the change in scale between (c,d). In (a–d), a total of 105 barycentre positions is plotted, corresponding to the time $tu_\infty/D \in [1260, 1262.4]$. Each position is $\Delta t_{snap} u_\infty/D = 0.6$ apart, so every 7 points complete a vortex shedding cycle. Blue circles are the last 1 to 7 positions. Red diamonds are the last 7 to 13 positions. The last 7th position is shared by circles and diamonds. In (e–g), the blue line is for the radial position and the red line is for the azimuthal position.

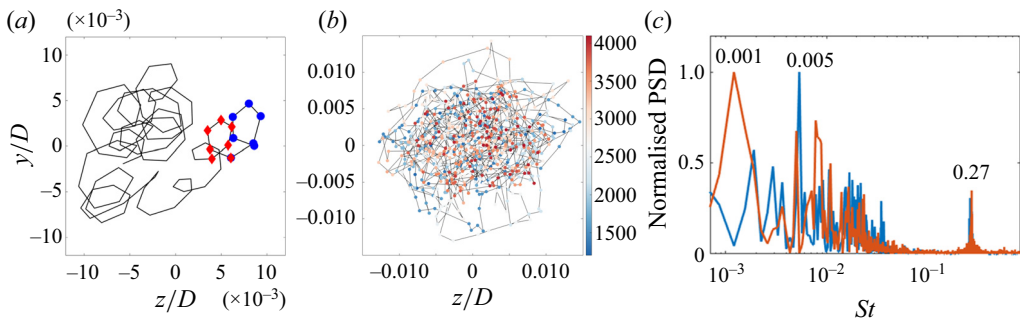


Figure 12. (a,b) History and (c) PSD of the barycentre position at $x = 0.2D$. (a) A partial history shown for clarity (total of 105 barycentre positions is plotted, corresponding to the time $tu_\infty/D \in [1260, 1262.4]$). Each position is $\Delta t_{snap} u_\infty/D = 0.6$ apart). Blue circles are the last 1 to 7 positions. Red diamonds are the last 7 to 13 positions. The last 7th position is shared by circles and diamonds. (b) Averaged barycentre positions taken every 7 snapshots during the entire statistics collecting time, $tu_\infty/D \in [1260, 4160]$. Symbols are coloured by non-dimensional time units. In (c), the blue line is for radial position and the red line is for azimuthal position.

peak is detected in its radial motion. Low-frequency azimuthal motions were associated with reorientations of the vortex shedding plane in the studies of Rigas *et al.* (2014) and Gentile *et al.* (2016). Low-frequency radial motions of the near-wake barycentre were discussed in Gentile *et al.* (2016) and might be related to a flapping mode of the shear layer (Wolf *et al.* 2012; Schrijer, Sciacchitano & Scarano 2014).

3.2. Details of coherent motion systems

In this section, we turn our attention to the three identified dominant coherent motions, VLF motion, bubble pumping and vortex shedding, and analyse their detailed dynamics.

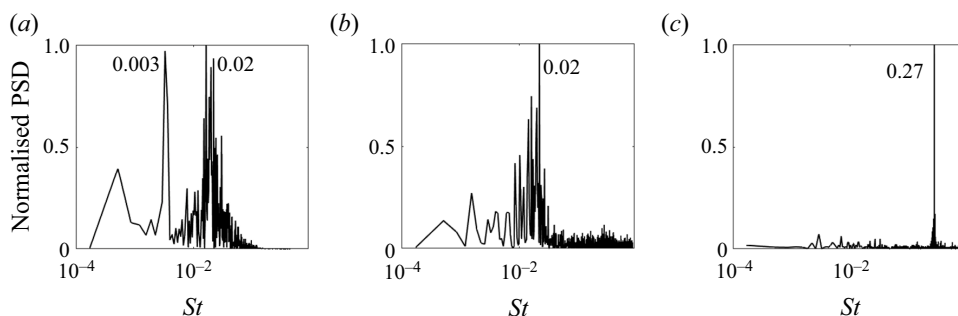


Figure 13. Normalised PSD of $u'(x, y, z, t)$ at the three probes: (a) probe 1, $(0.2D, 0D, 0D)$; (b) probe 2, $(1.6D, 0D, 0D)$; (c) probe 3, $(1.4D, -0.5D, 0D)$.

3.2.1. Time history probes

To confirm that the VLF, bubble pumping and vortex shedding motions are dominant in the very near wake, inside the recirculation zone and within the vortex shedding location, respectively, and to verify their frequencies, we place three probes in the wake, as illustrated in figure 6. Probe 1 is set immediately behind the trailing edge at $(x, y, z) = (0.2D, 0D, 0D)$ to capture the VLF motions. Probe 2 is placed near the end of the recirculation region at $(x, y, z) = (1.6D, 0D, 0D)$ to capture the bubble pumping. Probe 3 is located in the shear layer at $(x, y, z) = (1.4D, -0.5D, 0D)$ to capture the vortex shedding. To relate the probe locations to the dynamic processes in the wake, the reader is referred to figure 6(b), which plots the instantaneous contours of spanwise vorticity $\omega_z u_\infty / D$ across a symmetry plane at $z = 0$. Normalised PSD is plotted in figure 13 for the three probes. It can be seen that, indeed, the VLF (and the bubble pumping) motions are captured in the very near wake, the bubble pumping is the dominant process in the recirculation region, and the vortex shedding motions with $St = 0.27$ are prevalent in the shear layer. We now proceed with discussing each of these dominant motions in detail.

3.2.2. VLF motion

The existence of VLF motions with $St \sim 0.001 - 0.002$ was reported in previous studies for a wake flow past a body of revolution (Rigas *et al.* 2014; Gentile *et al.* 2016) and for an annular jet (Vanierschot & Van Den Bulck 2011). Recent contributions have associated the VLF motions with an azimuthal instability of the SS (steady symmetric) mode in the very near wake behind a bluff body. To detect whether SS mode is present in the current flow, we conduct a base pressure analysis similar to that reported by Rigas *et al.* (2014). Figure 14 plots the instantaneous snapshots of the pressure at the trailing edge of the axisymmetric body model. A clear antisymmetric pattern indicative of an existence of $|m| = 1$ mode in the instantaneous fields is visible, commensurate with the observations of Rigas *et al.* (2014) and Gentile *et al.* (2016). The two-dimensional POD analysis of base pressure (see figure 15) reveals the axisymmetric $m = 0$ mode with the dominant frequency of $St = 0.02$ as the first mode (consistent with figure 13a), and the two $|m| = 1$ asymmetric modes with the dominant frequencies in both the VLF and the vortex shedding regions as the second and the third modes. These results point towards the existence of the SS mode in the very-near-wake region in the current flow, as in the studies of Rigas *et al.* (2014) and Gentile *et al.* (2016), and are consistent with the hypothesis that VLF motions may be associated with the stochastic perturbations of the SS mode. A close resemblance of the VLF mode to a stationary mode in figure 9 further corroborates this hypothesis.

Coherent motions in a turbulent wake of an axisymmetric body

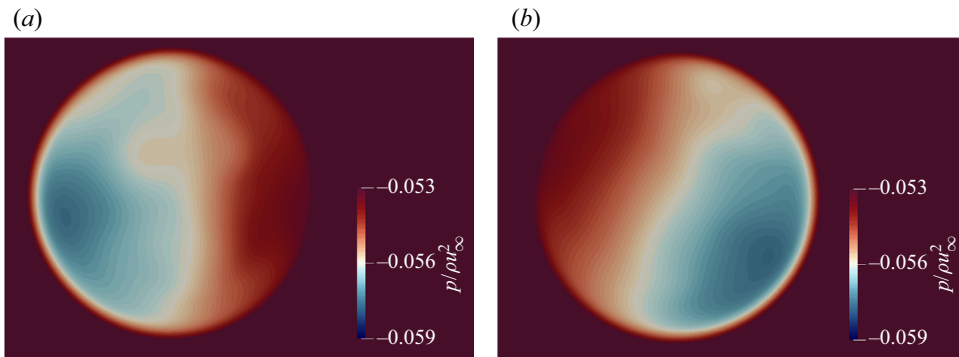


Figure 14. Instantaneous pressure distribution at the trailing edge of the body at two different time instances: (a) $t = 1920D/u_\infty$; (b) $t = 3540D/u_\infty$.

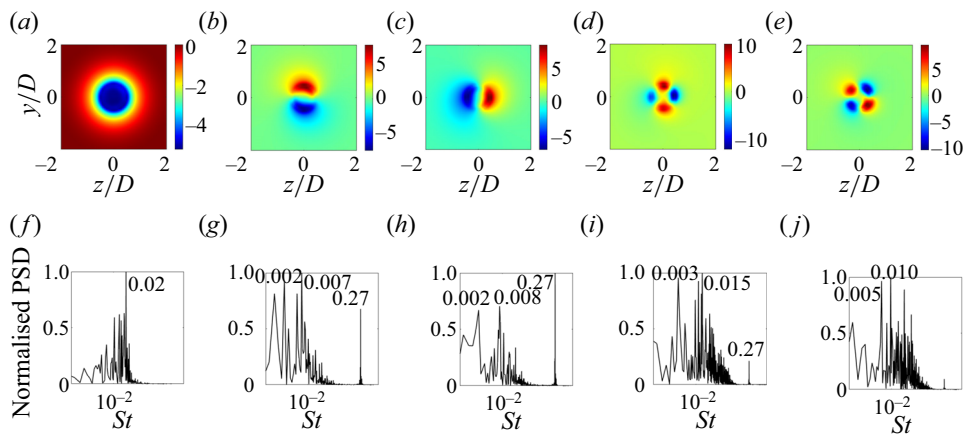


Figure 15. POD modes and their spectra for the base pressure: (a,f) mode 1, (b,g) mode 2, (c,h) mode 3, (d,i) mode 4 and (e,j) mode 5.

Although the origin of the VLF motion may be associated with the instabilities of the SS mode, the manifestation of this motion was found to be related to a slow azimuthal rotation of the vortex shedding symmetry plane past an axisymmetric body in Rigas *et al.* (2014) and Gentile *et al.* (2016), and to a precessional motion of the toroidal vortex around the central axis in the annular jet flow in Vanierschot & Van Den Bulck (2011). Similar precessional motions are also detected for the barycentre in the very near wake in this study (see figure 12). The precession dynamics of the barycentre is further studied in figure 16, where an azimuthal angle of the barycentre position is plotted versus time for $x = 0.2D$ and $x = 1.6D$. For $x = 0.2D$, we observe a chaotic dynamics similar to that reported in Gentile *et al.* (2016) for the VLF precessional motion. Small-scale fluctuations of the trajectory corresponding to the inner barycentre rotations with the vortex shedding frequency are clearly seen in figure 16(b), as well as the signature of the slower, VLF modulation. This is contrasted with the $x = 1.6D$ signal in figure 16(c) (and subsequent downstream locations, not shown here), where a pure rotational motion with a nearly constant rate of rotation ($\theta_b \approx \theta_{b0} + 2\pi f_v t$) is observed. For the precessional motion in figure 16(a,b), we do not detect any statistically significant reversals on the computed flow time scale. We see some partial reversals at $t_{u_\infty}/D \approx 2470, 3300$, however the direction

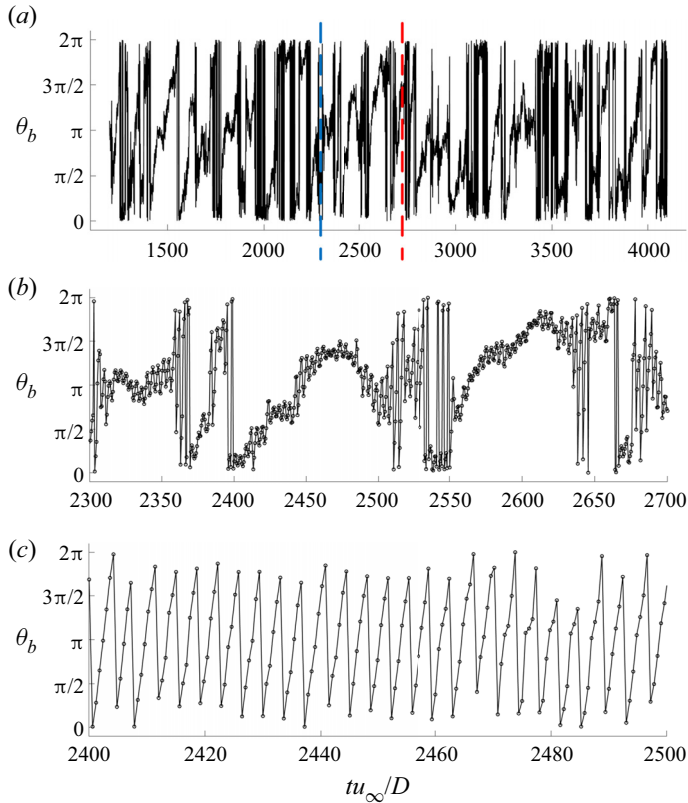


Figure 16. Barycentre azimuthal position θ_b versus time for (a) $x = 0.2D$, $tu_\infty/D \in [t_{min}, t_{max}]$, (b) $x = 0.2D$, $tu_\infty/D \in [2300, 2700]$ and (c) $x = 1.6D$, $tu_\infty/D \in [2400, 2500]$. In (a), the full history for the statistics collecting time is shown; for (b,c), a partial history is shown, commensurate with the time in brackets in the subcaptions. In (b,c), circles represent the snapshots, separated by $\Delta t_{snap} u_\infty/D = 0.6$ (there are 7 snapshots in a vortex shedding cycle).

of rotation quickly switches back to its original, counterclockwise orientation (increasing θ). This is in contrast to Yang *et al.* (2015), where full reversals in the direction of rotation were detected in the wake behind the circular disk at $Re \sim 300\text{--}10\,000$ with large eddy simulations, on much shorter time scales, $St \sim 0.02$, comparable with the bubble pumping time scales. We note that previous studies that analysed the VLF motions of the barycentre in the near wake behind a body of revolution (Rigas *et al.* 2014; Gentile *et al.* 2016) did not comment on reversals in the precession direction. A rotational bias (commensurate with a lack of reversals) in the near wake results in a *mean* flow asymmetry over the full DNS averaging time in the current study, which can be appreciated from a non-zero mean value of the cross-sectional moment about the geometric centreline in the near wake,

$$\langle M \rangle_t = \int_{t_{min}}^{t_{max}} \iint_A u_\theta(x, r, \theta, t) r^2 dr d\theta dt, \quad (3.2)$$

depicted in figure 17(a). Rotational motion in the near wake can be further visualised by the instantaneous streamlines in figure 17(b) that show the swirling paths in a narrow region behind the body, confined to a recirculation zone, suggesting an existence of a rotation within the recirculation region.

Coherent motions in a turbulent wake of an axisymmetric body

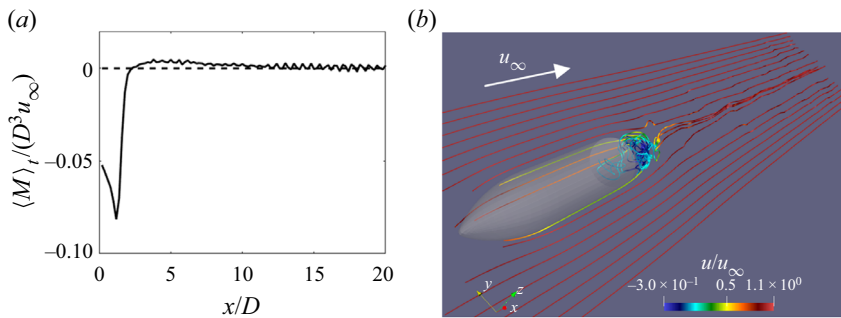


Figure 17. Manifestation of the rotational processes in the near-wake region. (a) Time-averaged cross-sectional moment. (b) Three-dimensional streamlines coloured by streamwise velocity. Swirling in the recirculation region immediately behind the bluff body trailing edge reflected by the coloured streamlines is visible.

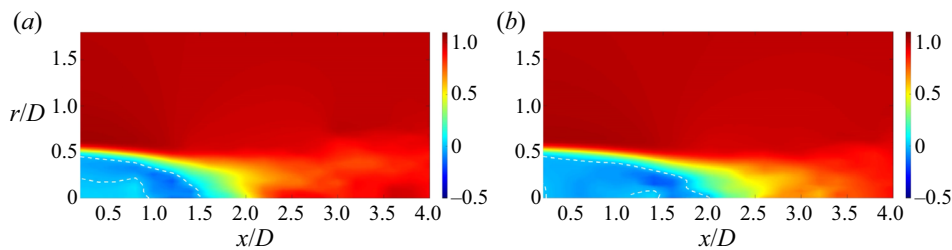


Figure 18. Instantaneous snapshots of azimuthally averaged streamwise velocity: (a) short bubble; (b) long bubble. White dashed lines correspond to isolines of $\langle u \rangle_\theta = 0$.

3.2.3. Bubble pumping motion

Bubble pumping motion, corresponding to $St = 0.02$ in the current study, refers to a periodic shrinkage and elongation of the recirculation region. It is visualised in figure 18, where two representative snapshots of an azimuthally averaged instantaneous streamwise velocity are plotted in the recirculation region at two different time instances. A shorter length of the bubble in the left image as compared with the right image is clearly pronounced. Bubble pumping is a robust feature of the separated flows for a range of surface geometries and Reynolds number regimes (Berger *et al.* 1990; Rodriguez *et al.* 2011; Rigas *et al.* 2014; Wu *et al.* 2020).

It has been proposed that the Görtler instability induced by a streamwise curvature of the separation bubble may be a possible origin of its low-frequency unsteadiness (Wu *et al.* 2020; Hu, Hickel & Van Oudheusden 2021). Following the analysis in Wu *et al.* (2020) and Hu *et al.* (2021), we compute the curvature and the Görtler number distribution along the selected streamlines shown in figure 19. Curvature is computed as δ_0/R , where δ_0 is the boundary layer thickness at the trailing edge of the body ($x = 0$) and R is the local radius of curvature. The Görtler number in the original studies of the instabilities over the concave walls (Görtler 1954; Smith 1955) is defined as

$$G_T = \frac{u_e \Theta}{\nu} \sqrt{\frac{\Theta}{R}}, \quad (3.3)$$

where u_e and Θ are the free-stream velocity at the edge of the boundary layer and the local momentum thickness, respectively, with $G_T > 0.3$ being a criterion for the instability. However, this criterion is for laminar flows. Tani (1964) and Wu *et al.* (2020) has

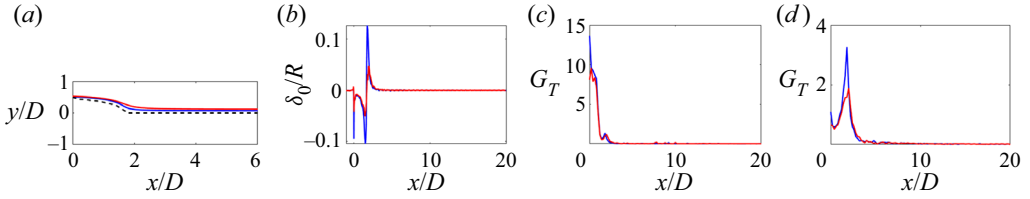


Figure 19. Analysis of Görtler instabilities. (a) Selected streamlines for analysis. Black, isoline of $\langle u \rangle_t = 0$ followed by the centreline; blue, streamline 1, originated at $(-2D, 0.52D, 0)$; red, streamline 2, originated at $(-2D, 0.54D, 0)$. (b) Curvature along the streamline 1 (blue) and streamline 2 (red). (c,d) Görtler number calculated using the criterion of (c) (3.3) and (d) (3.5) for the streamline 1 (blue) and streamline 2 (red).

substituted the kinematic viscosity ν with the total viscosity $\nu_{tot} = \nu + \nu_{t,eff}$ to estimate the Görtler number in (3.3), where $\nu_{t,eff}$ is the effective turbulent eddy viscosity calculated as (Spalart & Strelets 2000)

$$\nu_{t,eff} = -\frac{\langle u'_i u'_j \rangle_{\theta,t}}{2S_{ij}S_{ij}}, \quad (3.4)$$

where S_{ij} is the temporally and azimuthally averaged strain rate tensor. They suggested that the same criterion $G_T > 0.3$, with G_T number based on the total viscosity, could be applied to turbulent flows. However, these studies have been focused on boundary layers, whereas in the current configuration, the flow separation occurs due to a blunt body located upstream. Hu *et al.* (2021) applied the Görtler instability criterion to a flow separation behind a backward facing step. They calculated Görtler number based on the following equation

$$G_T = \frac{\Theta}{0.18\delta^*} \sqrt{\frac{\Theta}{R}}, \quad (3.5)$$

where δ^* is the local displacement thickness, and used the criterion $G_T > 0.6$ for instability. Görtler number calculated based on both the definitions of (3.3) and (3.5) is plotted in figure 19 along the two selected streamlines. It can be seen that G_T estimations based on both criteria are close to their computed values in Wu *et al.* (2020) and Hu *et al.* (2021), respectively, and both satisfy the instability criterion. This suggests that Görtler instability, indeed, may play a role in a low-frequency bubble unsteadiness observed here (Wu *et al.* 2020; Hu *et al.* 2021).

3.2.4. Vortex shedding motion

Vortex shedding motion is captured in the previous analysis with the frequency of $St = 0.27$. In Gentile *et al.* (2016), the vortex shedding frequency of $St = 0.2$ was reported. The difference is attributed to a state of the boundary layer on the bluff body surface. In Gentile *et al.* (2016), the boundary layer is tripped along the body, which causes its transition to a turbulent state. The boundary layer in the current study has been confirmed as laminar by matching the boundary layer profile with the Blasius solution (not shown here). The boundary layer thickness at the trailing edge of the body in the current study is $\delta/D = 0.11$, $\Theta/D = 0.013$, resulting in a Reynolds number based on the distance from the leading edge as $Re_x = 2.5 \times 10^4$, and based on the momentum thickness as $Re_\Theta = 65$. It was reported in Sieverding & Heinemann (1990) that a change from a laminar to a turbulent boundary layer, either by tripping the boundary layer or by increasing the Reynolds number, decreases the Strouhal number drastically, by as much as 30–80 %,

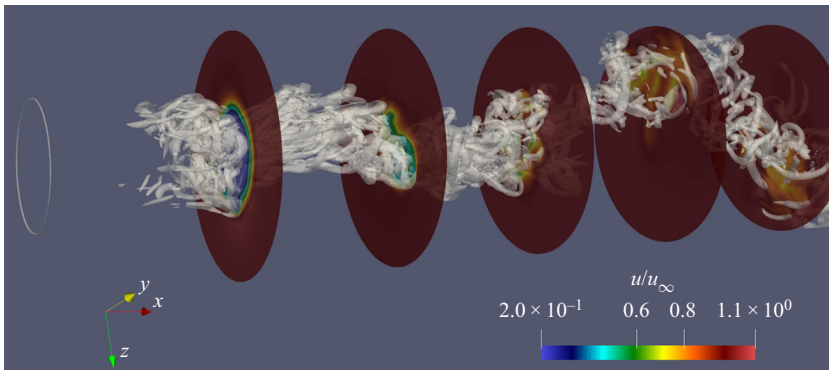


Figure 20. Helical structure in the wake visualised by $\lambda_{ci} = 5(u_\infty/D)^2$. The cross-sectional slices are coloured by streamwise velocity. The first slice is at $x = 1.6D$, the separation between slices is $1.4D$.

depending on the geometry. The dependence of the Strouhal number on the boundary layer thickness was examined in Rowe, Fry & Motallebi (2001) and Mariotti & Buresti (2013) for a similar geometry of an axisymmetric blunt body. For a thinner boundary layer (smooth case) in the experiments of Mariotti & Buresti (2013), with the thickness of $\delta/D = 0.107$, similar to that in the current study, a very close Strouhal number $St \approx 0.262$ was reported. In general, the vortex shedding frequency scales with the inverse of the shear-layer thickness (Weiss, Mohammed-Taifour & Schwaab 2015), which is typically correlated with the boundary layer thickness (Sieverding & Heinemann 1990; Zhang, Lee & Ligrani 2004; Mariotti & Buresti 2013).

To visualise the vortex shedding structure, in figure 20 we plot the isosurfaces of the λ_{ci} (swirling strength) criterion in the wake (Chakraborty, Balachandar & Adrian 2005). From figure 20, it can be seen that the vortical motions self-organise into a helical structure, with the packets of high swirling strength passing through the regions of low streamwise velocity, as can be seen from the cross-sectional slices in figure 20.

To understand the motion of the helical structure in time, following Achenbach (1974) and Tomboulides & Orszag (2000), we calculate the correlations of fluctuating streamwise velocity among the points on a cross-sectional plane that are located at the same radial distance from the centreline and are separated by a fixed angle of $\pi/2$ in the azimuthal direction. The cross-correlation function is defined as

$$R_{ij}(x, r, \tau) = \langle u'(x, r, \theta_i, t)u'(x, r, \theta_j, t + \tau) \rangle_t, \quad (3.6)$$

where $\theta_i, \theta_j, i, j = 1, 2, 3, 4$, are the phase angles corresponding to the four chosen probes (see figure 21 for the precise location of the probes). The auto-correlation function is obtained if $j = i$. The normalised correlation function is further defined as

$$\rho_{ij}(x, r, \tau) = \frac{R_{ij}(x, r, \tau)}{(R_{ii}(x, r, 0)R_{jj}(x, r, 0))^{1/2}}. \quad (3.7)$$

Here the time series of fluctuating velocity at probe i is called event i for brevity. If we look at ρ_{12} and ρ_{14} plots in figure 21(a) for $(x, r) = (1.4D, 0.5D)$, we observe the phase angle for the events 2 and 4 being $\pm\pi/2$ (the time series are shifted by $\pm\pi/2$ from the event 1), coinciding with their azimuthal separation from the event 1. For ρ_{13} , the phase angle between events 1 and 3 is correspondingly π , being equal to the angular difference as well. A conclusion can be drawn that there is a rotating signal on this cross-sectional plane.

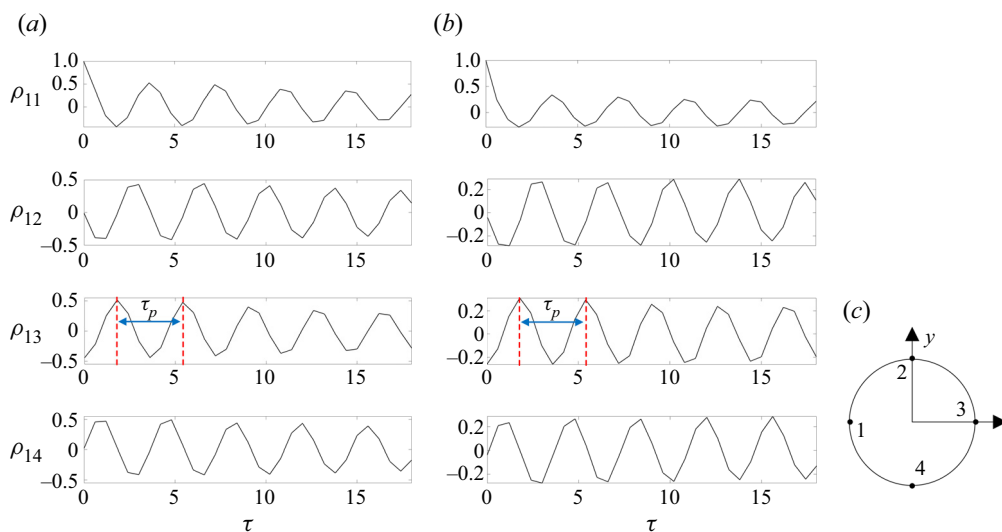


Figure 21. Normalised auto- and cross-correlation functions among the four probes at (a) $(x, r) = (1.4D, 0.5D)$ and (b) $(x, r) = (9.8D, 0.5D)$. Location of the four probes is shown in (c). Images in (a,b) correspond to (from top to bottom): ρ_{11} , ρ_{12} , ρ_{13} , ρ_{14} . Here τ_p denotes the time period between the neighbouring peaks.

Similar rotating signal is also captured in the intermediate wake at $(x, r) = (9.8D, 0.5D)$ (figure 21b). As shown in figure 17(a), the non-zero cross-sectional moment indicative of the actual rotation of the turbulent structure occurs *only* in the recirculation region. This rotating process in the near wake leads to a formation of the corkscrew-shaped helical structure. Upon exiting the recirculation region, the helical structure translates to the downstream area without rotation. The rotating signal on a cross-sectional plane is simply a manifestation of this translational motion of the structure, which attains a spiraling shape (see also the corresponding DMD mode in figure 9). The passing frequency of the events based on the temporal separation of the neighbouring peaks, τ_p (figure 21), results in $St = D/(\tau_p u_\infty) = 0.278$, which confirms the connection of this rotational signal to the vortex shedding.

We now look at the temporal evolution of the vorticity magnitude on the slices with different azimuthal angles, as illustrated in figure 22 (please, also refer to Movie 1 in the online supplementary material available at <https://doi.org/10.1017/jfm.2023.231>). We can see that in each plane, the vortex packets detach from the upper and lower shear layers alternately. These ‘upper’ and ‘lower’ vortices form the peaks and the troughs, respectively, of the wavy structure, as seen in the streamwise-radial slices; or a skeleton of the helical structure in three dimensions. However, the same alternating pattern exists at any plane of symmetry, characterised by an arbitrary azimuthal angle, at any given time. This conclusion is corroborated by figure 22, which suggests that the same vortical structure can be tracked at equally separated azimuthal slices with a constant time delay (alternatively, constant streamwise separation at a fixed time instance).

3.2.5. Discussion of the vortex shedding mode

As discussed in the introduction, the vortex shedding in the RSP mode was predominantly observed for spherical wakes (Sakamoto & Haniu 1990; Mittal *et al.* 2002; Rodriguez *et al.* 2011), and also in some cases of axisymmetric wakes (Gentile *et al.* 2016;

Coherent motions in a turbulent wake of an axisymmetric body

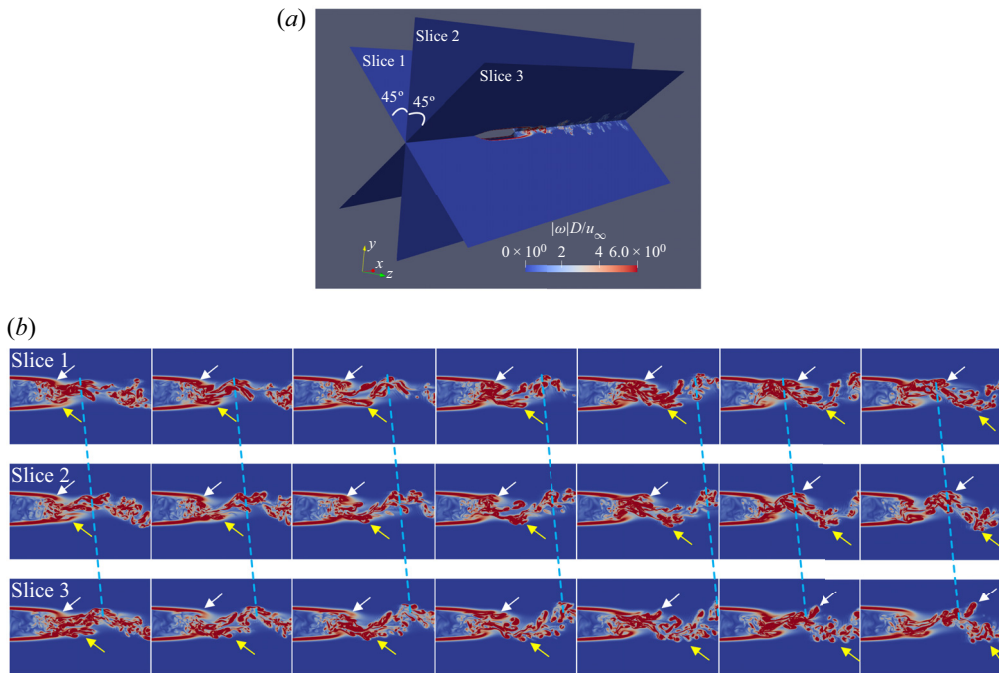


Figure 22. Analysis of instantaneous vorticity magnitude $|\omega|D/u_\infty$ on selected slices. (a) A three-dimensional position of the slices. Slice 2 is at $z=0$. (b) Temporal evolution of the vorticity magnitude on the three selected slices in approximately one vortex shedding cycle. The snapshots between any adjacent columns are $\Delta t_{snap} u_\infty/D = 0.6$ apart. The white and yellow arrows are pointing to the peak and trough of the wavy structure (projection of the helical structure), respectively. The blue dashed line connects the peaks in the same temporal positions.

Pavia *et al.* 2019), although the domain of interrogation in the above two studies was too short to demonstrate the wake development downstream of the vortex shedding location ($x/D \leq 1.6$). In the current study, due to a lack of a planar symmetry in the vortex shedding modes (figure 9) and in the near-wake region (figure 10), it can be concluded that the vortex shedding occurs in the RSB mode. This is not surprising, because the RSB mode is the primary stable mode after the Hopf bifurcation (figure 1) for the blunt-edged bodies, in contrast to the RSP mode for spheres (Fabre *et al.* 2008; Meliga *et al.* 2009). Vortex shedding in the RSB mode in turbulent wakes has been documented previously for disks (Yang *et al.* 2014) and for axisymmetric bodies (Pavia *et al.* 2019). The distinguishing feature of the RSB mode is the twisting of the vortex loops in the near wake of the body (Fabre *et al.* 2008; Bury & Jardin 2012), termed as the ‘Yin-Yang’ pattern in Yang *et al.* (2014). This twisting, or the ‘Yin-Yang’ pattern, is clearly pronounced in the DMD cross-sectional slices in figure 10, and gives the vortex shedding mode its spiraling shape, observed in figure 9.

Analysis of the base pressure on the body trailing edge reveals a strong antisymmetric mode (figures 14 and 15), as in Rigas *et al.* (2014), Gentile *et al.* (2016) and Zhu & Morrison (2021), suggesting of a presence of the SS mode in the very near wake in this flow. Given that both the RSP and RSB are the bifurcations from the SS mode, and that both RSP and RSB can be constructed as a superposition of the SS mode and the two least-stable $m = \pm 1$ unsteady modes (Fabre *et al.* 2008; Meliga *et al.* 2009), it is reasonable to conjecture that vortex shedding for both modes may originate as the shedding

of the vortex loops on each side of the symmetry plane. For the RSB mode, however, the vortex loops do not stay symmetric: either during their formation or the early stages of shedding, they may experience an azimuthal shear that breaks their planar symmetry and gives them their twisted shapes. The signs of the rotational motion are indeed detected in the near wake in the current study (in the flow streamlines in [figure 17\(b\)](#) and in the negative mean cross-sectional moment in [figure 17\(a\)](#)). They may be an indication of the processes that are potentially triggered by an uneven pressure distribution on the base of the body (Yun *et al.* 2006; Rigas *et al.* 2014) due to a symmetry breaking. We remark that these rotational processes only occur in the recirculation bubble in the current work. This is in remarkable agreement with the analytical study by Meliga *et al.* (2009) who showed that the nonlinear interactions between the modes only occur in the recirculation bubble and named this region the ‘effective wavemaker’. In this sense, the near-wake processes shape the coherent structures, which subsequently shed and translate into the intermediate wake, producing the rotating signals in the cross-sectional planes without an actual rotation. Rotating signals on the cross-sectional planes have also been recorded for spheres (Achenbach 1974; Tomboulides & Orszag 2000; Yun *et al.* 2006), and similar mechanisms may be at play in these cases (Yun *et al.* 2006).

The VLF motions are related to a destabilisation of the SS mode by turbulent fluctuations. This is supported by previous studies that demonstrated a good agreement between stochastic diffusive models as applied to a steady bifurcated mode and experimental data of the VLF dynamics in bluff-body wakes (Rigas *et al.* 2015) and Rayleigh–Bénard convection (Brown & Ahlers 2008). The presented data supports this hypothesis. As the VLF dynamics is related to the SS mode, it can occur with both the RSP shedding as documented previously (Rigas *et al.* 2014; Gentile *et al.* 2016), and with the RSB shedding. In the RSB mode, it is responsible for a stochastic azimuthal meandering of the vortex shedding plane with respect to an initial orientation of the Yin-Yang structure, as seen from the near-wake barycentre dynamics ([figure 11](#)). Another aspect of the VLF motion is the radial ‘breathing’, or flapping of the shear layer (Wolf *et al.* 2012; Gentile *et al.* 2016), which may be related to a destabilisation of the $|m| = 2$ mode (see modes 4 and 5 of the base pressure in [figure 15](#)). This is suggested by the shape of the VLF mode in the intermediate wake, after the rotational effects of the recirculation region are diminished, which has a clear $|m| = 2$ shape ([figures 9](#) and [10](#)). Future studies are needed to further clarify the mechanisms of azimuthal versus radial VLF motions in bluff-body wakes.

4. Conclusions

The current paper presents the results of a DNS of a turbulent wake past a body of revolution with a blunt trailing edge at Reynolds number $Re = 5000$. The simulations are run for over 1000 vortex shedding cycles, and the statistics is collected for approximately 800 shedding cycles in order to capture the VLF motions.

Three systems of coherent motions are detected and investigated for the current wake flow: VLF motions with $St \sim 0.002 - 0.005$ originating in the near wake, the bubble pumping motion with $St = 0.02$ in the recirculation region and the vortex shedding motion with $St = 0.27$ associated with the shedding of large-scale vortex structures in the shear layer and into the wake. The VLF motion is potentially associated with a stochastic destabilisation of the SS mode (Rigas *et al.* 2015) and displays both azimuthal ($St \sim 0.002$) and radial ($St \sim 0.005$) dynamics. The bubble pumping motion was found to be localised primarily in the recirculation region and was attributed to the Görtler instability of the curved streamlines in the separation bubble (Wu *et al.* 2020; Hu *et al.* 2021).

Vortex shedding mode is the strongest mode felt both in the near and in the intermediate wake of the flow. Vortex shedding in the RSB mode (Fabre *et al.* 2008; Bury & Jardin 2012; Yang *et al.* 2014) was observed in the current flow, which resulted in a twisting of the detaching vortex loops in the backflow region and their subsequent convection into the intermediate wake, giving the vortex shedding mode a characteristic spiraling shape. A double vortex shedding mode, with $St = 0.55$, in the form of a double helix, was also detected, potentially emerging as a structure that reflects the passing of both positively and negatively oriented vortex loops.

It was found that the critical processes that shape the wake structure occur in the recirculation region, including a low-frequency reorientation of the vortex shedding plane, low-frequency meandering of a radial barycentre position and twisting of the vortex loops. These processes form the vortex shedding structure, which subsequently convects to the intermediate wake and radially diffuses outwards. In this sense, there is a strong connection between the near- and the intermediate-wake motions. Vortex shedding frequency is detectable in the base pressure spectrum and downstream in the near and the intermediate wake, suggesting that the vortex shedding processes start forming upstream of the actual shedding location. VLF motions, although forming in the very near wake, are felt in the intermediate wake as well, as manifested by a persistent VLF mode in a global structure of the flow. It is however noted that only the radial VLF processes may be present in the intermediate wake, whereas the azimuthal VLF processes, associated with the lowest detected frequency of $St = 0.002$, are localised in the near-wake region. In addition, the bubble pumping motion, manifesting as an axisymmetric $m = 0$ mode, was found to be primarily confined to the recirculation region of the flow.

The presented information of the low-dimensional structure of the turbulent wake behind an axisymmetric bluff body can be useful for developing low-order models of the wake dynamics. It can also help design control interventions to reduce the undesirable effects of the flow separation and the associated unsteady motions, such as a high drag on the body (Beaudoin *et al.* 2006; Pastoor *et al.* 2008), an increased acoustic noise (Cattafesta *et al.* 2008; Das Gupta & Roy 2015) and aero-optical distortions (Fitzgerald & Jumper 2004; Smith, Gordeyev & Jumper 2011).

Supplementary movie. Supplementary movie is available at <https://doi.org/10.1017/jfm.2023.231>.

Funding. This work has been supported by NSF grants CBET-1707075 and CAREER-1944568. The computational time has been provided by NSF XSEDE supercomputing resources.

Declaration of interests. The authors report no conflict of interest.

Author ORCIDs.

 Fengrui Zhang <https://orcid.org/0000-0003-2687-8068>;

 Yulia T. Peet <https://orcid.org/0000-0003-4072-1278>.

Appendix A. Grid resolution comparison

In [table 2](#), we compare the grid resolution and the statistical averaging time with the other DNS studies of wake flows at comparable Reynolds numbers. In this table, N_{ptv} is the number of points in the viscous sublayer, averaged along the surface of the body. We also compute the averaged grid-point distances \bar{h}_{nw}/D , \bar{h}_{iw}/D , respectively, in the near wake ($0 \leq x \leq 1.6D$) and the intermediate wake ($x \geq 1.6D$) of the model, where $x = 0$ corresponds to the trailing edge of the body. More precisely, \bar{h}_{nw} , \bar{h}_{iw} are defined as the averaged grid-point distances over all the elements residing in a cylindrical volume around the grid centreline with a radius of $D/2$ and a streamwise length corresponding to

	Rodriguez <i>et al.</i> (2011)	Dong & Karniadakis (2005)	Pal <i>et al.</i> (2017)	Current DNS
Geometry	Sphere	Cylinder	Sphere	Ogive + Cylinder
Re	3700	10 000	3700	5000
N_{prv}	12	12	20	20
\bar{h}_{nw}/D	0.008	—	—	0.008
\bar{h}_{iw}/D	0.014	—	< 0.0134	0.010
$t_{stat}u_\infty/D$	350	1020	80	2900
(in vs)	(75 vs)	(210 vs)	(16 vs)	(783 vs)

Table 2. Grid resolution and time-averaging parameters in comparison with other DNS of wake flows. Dashes indicate that the data are not available. The last line in the table corresponds to a statistical averaging time in terms of vortex shedding cycles.

	Mesh 1	Mesh 2	Mesh 3	Mesh 4
DOF	2.8 million	9.8 million	20.0 million	36.7 million
N_{prv}	6	12	18	18
\bar{h}_{nw}/D	0.026	0.017	0.012	0.008
\bar{h}_{iw}/D	0.034	0.021	0.016	0.010
$t_{stat}u_\infty/D$	880	880	880	880
(in vs)	(194 vs)	(194 vs)	(194 vs)	(194 vs)

Table 3. Grid resolution and time-averaging parameters for a DNS validation case for a flow over a sphere at $Re = 3700$ with Nek5000 (Zhang & Peet 2022). Near wake for a sphere is defined as $0 \leq x \leq 3D$ and intermediate wake is at $3D \leq x \leq 5D$. DOF denotes the total number of degrees of freedom.

	St	L_{sep}/D	C_d	φ_{sep} (deg.)
Nek5000 Mesh 1	0.229	2.51	0.381	90.2
Nek5000 Mesh 2	0.219	2.67	0.377	89.9
Nek5000 Mesh 3	0.220	2.69	0.375	89.8
Nek5000 Mesh 4	0.220	2.70	0.375	89.8
Kim & Durbin (1988) (exp)	0.225	—	—	—
Yun <i>et al.</i> (2006) (LES)	0.21	2.62	0.355	90.0
Rodriguez <i>et al.</i> (2011) (DNS)	0.215	2.28	0.394	89.4
Bazilevs <i>et al.</i> (2014) (DNS)	0.221	2.28	0.392	89.4
Dorschner <i>et al.</i> (2016) (DNS-LBM)	—	2.51	0.383	90.0
Seidl, Muzaferija & Perić (1997) (DNS ^a)	—	2.1	0.38	89.5

Table 4. Comparison of St , L_{sep}/D , C_d and φ_{sep} for a flow over a sphere at $Re = 3700$ between Nek5000 and other available data. LBM denotes lattice Boltzmann method. Dashes indicate that the data are not available.

^aDNS of Seidl *et al.* (1997) is performed with $Re = 5000$. All other data is for $Re = 3700$.

a particular region in the wake, such as

$$\left. \begin{aligned} \bar{h}_{nw} &= \frac{\left(\sum_e V_e\right)^{1/3}}{N_{enw} N} \left| \{e : [\min x(e), \max x(e)] \subset [0, 1.6D], \max r(e) \leq D/2\}, \right. \\ \bar{h}_{iw} &= \frac{\left(\sum_e V_e\right)^{1/3}}{N_{eiw} N} \left| \{e : [\min x(e), \max x(e)] \subset [1.6D, 20D], \max r(e) \leq D/2\}, \right. \end{aligned} \right\} \quad (A1)$$

Coherent motions in a turbulent wake of an axisymmetric body

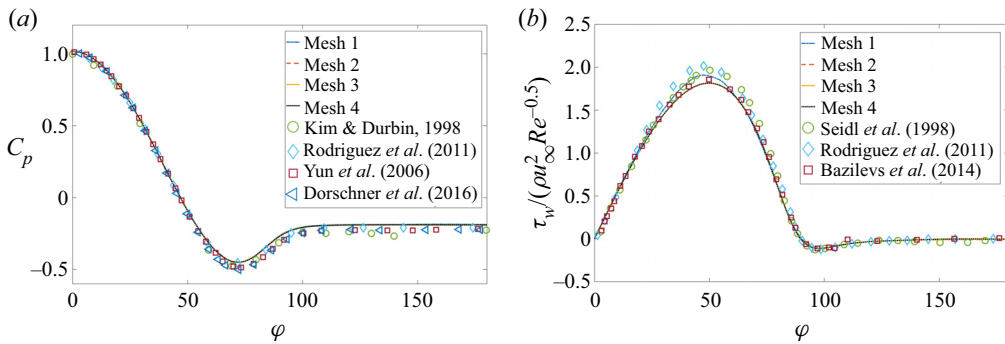


Figure 23. Validation of DNS with Nek5000 for a flow over a sphere at $Re = 3700$: (a) pressure coefficient, C_p , along the sphere surface; (b) skin-friction coefficient, $\tau_w/(\rho u_\infty^2 Re^{-0.5})$, along the sphere surface. Angle φ is along the circumference of the sphere, counted from the stagnation point, in degrees.

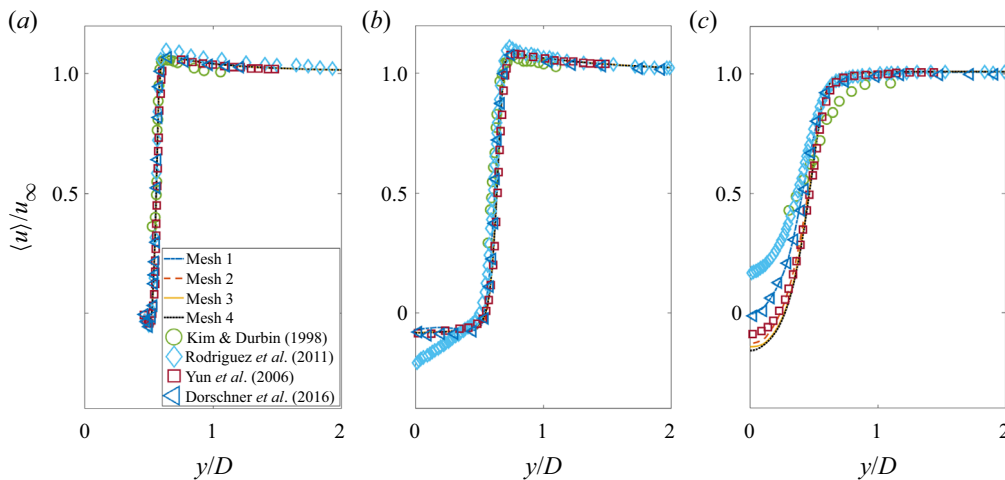


Figure 24. Validation of DNS with Nek5000 for a flow over a sphere at $Re = 3700$. Time-averaged streamwise velocity profiles at (a) $x/D = 0.2$, (b) $x/D = 1.6$ and (c) $x/D = 3$. The centre of the sphere is at $(0,0,0)$.

where N_{enw} , N_{iww} are the corresponding number of elements within the cylindrical volume defined for the near- and intermediate-wake regions, respectively, V_e is the element volume. Grid-point distances \bar{h}_{nw} , \bar{h}_{iw} are evaluated based on the velocity grid, so that $N = 7$ is taken in (A1). While comparing \bar{h}_{nw}/D , \bar{h}_{iw}/D with the finite-grid or finite-volume approaches in table 2, the definition (A1) is adjusted to correspond to the cell volumes instead of the element volumes, and division by N is omitted. We should also note that the definitions of the near-wake and the intermediate-wake regions are based on the length of the separation bubble, which is case-dependent. From table 2, the current DNS grid is as fine as or finer than the grids employed in previously published computations, and the current DNS simulation runs for a significantly longer time.

Appendix B. Validation of the numerical methodology

To validate our numerical set-up and the solver capabilities in application to flows over bluff bodies, we performed an auxiliary DNS for a flow over a sphere at $Re = 3700$, which was investigated previously via DNS (Rodríguez *et al.* 2011; Bazilevs *et al.* 2014; Dorschner *et al.* 2016; Pal *et al.* 2017) and via experiments (Kim & Durbin 1988). Note that we are unable to perform a validation in the context of the original geometry of a cylindrical body of revolution, because all the previous studies [experiments (Jiménez *et al.* 2010; Rigas *et al.* 2014; Ashok *et al.* 2015; Gentile *et al.* 2016; Pavia *et al.* 2019) or large eddy simulations (Posa & Balaras 2016; Kumar & Mahesh 2018; Zhu & Morrison 2021)] were performed with significantly higher Reynolds numbers inaccessible by DNS. For a flow over a sphere, a series of four meshes and their resolution parameters used for the validation studies are listed in table 3. The numerical method, initial and boundary conditions remain the same as for the body of revolution. A comparison of the vortex shedding Strouhal number (St), the length of the separation bubble (L_{sep}/D), the drag coefficient on the body surface (C_d) and the separation angle (φ_{sep}) with the available data from the literature can be found in table 4. A comparison of the pressure coefficient, C_p , and skin friction coefficient, $\tau_w/(\rho u_\infty^2 Re^{-0.5})$, ρ is the fluid density, over the sphere surface is illustrated in figure 23. Mean streamwise velocity profiles at several axial locations along the wake are compared in figure 24. The presented data demonstrates that grid convergence is achieved at a resolution level comparable to that of the mesh employed for the DNS of the ogive cylinder, and shows a good agreement with the previously published data.

REFERENCES

- ACHENBACH, E. 1974 Vortex shedding from spheres. *J. Fluid Mech.* **62**, 209–221.
- ADRIAN, R.J., SAKIEVICH, P.J. & PEET, Y.T. 2017 Reynolds decomposition of turbulence containing super-coherent states. In *Proc. 10th Int. Symp. on Turbulence and Shear Flow Phenomena, Chicago, IL*. International Symposium on Turbulence and Shear Flow Phenomena, TSFP10.
- ASHOK, A., BUREN, T.V. & SMITS, A.J. 2015 Asymmetries in the wake of a submarine model in pitch. *J. Fluid Mech.* **774**, 416–442.
- BALAKUMAR, B.J. & ADRIAN, R.J. 2007 Large- and very-large-scale motions in channel and boundary-layer flows. *Phil. Trans. R. Soc. A* **365** (1852), 665–681.
- BAZILEVS, Y., YAN, J., DE STADLER, M. & SARKAR, S. 2014 Computation of the flow over a sphere at $Re = 3700$: a comparison of uniform and turbulent inflow conditions. *J. Appl. Mech.* **81** (12), 121003.
- BEAUDOIN, J.-F., CADOT, O., AIDER, J.-L. & WESFREID, J.-E. 2006 Drag reduction of a bluff body using adaptive control methods. *Phys. Fluids* **18** (8), 085107.
- BERGER, E., SCHOLZ, D. & SCHUMM, M. 1990 Coherent vortex structures in the wake of a sphere and a circular disk at rest and under forced vibrations. *J. Fluids Struct.* **4**, 231–257.
- BROWN, E. & AHLERS, G. 2008 A model of diffusion in a potential well for the dynamics of the large-scale circulation in turbulent Rayleigh–Bénard convection. *Phys. Fluids* **20** (7), 075101.
- BURY, Y. & JARDIN, T. 2012 Transitions to chaos in the wake of an axisymmetric bluff body. *Phys. Lett. A* **376**, 3219–3222.
- CARMODY, T. 1964 Establishment of the wake behind a disk. *Trans. ASME J. Basic Engng* **87**, 869–882.
- CATTAFESTA III, L.N., SONG, Q., WILLIAMS, D.R., ROWLEY, C.W. & ALVI, F.S. 2008 Active control of flow-induced cavity oscillations. *Prog. Aerosp. Sci.* **44**, 479–502.
- CHAKRABORTY, P., BALACHANDAR, S. & ADRIAN, R.J. 2005 On the relationships between local vortex identification schemes. *J. Fluid Mech.* **535**, 189–214.
- DAS GUPTA, A. & ROY, S. 2015 Noise control of subsonic cavity flows using passive receptive channels. In *53rd AIAA Aerospace Sciences Meeting, Kissimmee, FL*. AIAA Paper 2015-1525.
- DEVILLE, M.O., FISCHER, P.F. & MUND, E.H. 2002 *High-Order Methods for Incompressible Fluid Flow*. Cambridge University Press.
- DONG, S. & KARNIADAKIS, G.E. 2005 DNS of flow past a stationary and oscillating cylinder at $Re = 10\,000$. *J. Fluids Struct.* **20** (4), 519–531.

Coherent motions in a turbulent wake of an axisymmetric body

- DONG, S., KARNIADAKIS, G.E. & CHRISOSTOMIDIS, C. 2014 A robust and accurate outflow boundary condition for incompressible flow simulations on severely-truncated unbounded domains. *J. Comput. Phys.* **261**, 83–105.
- DORSCHNER, B., FRAPOLLI, N., CHIKATAMARLA, S.S. & KARLIN, I.V. 2016 Grid refinement for entropic lattice Boltzmann models. *Phys. Rev. E* **94** (5), 053311.
- EL KHOURY, G.K., SCHLATTER, P., NOORANI, A., FISCHER, P.F., BRETHOUWER, G. & JOHANSSON, A.V. 2013 Direct numerical simulation of turbulent pipe flow at moderately high Reynolds numbers. *Flow Turbul. Combust.* **91** (3), 475–495.
- FABRE, D., AUGUSTE, F. & MAGNAUDET, J. 2008 Bifurcations and symmetry breaking in the wake of axisymmetric bodies. *Phys. Fluids* **20** (5), 051702.
- FISCHER, P. 1997 An overlapping Schwarz method for spectral element solution of the incompressible Navier–Stokes equations. *J. Comput. Phys.* **133**, 84–101.
- FISCHER, P., LOTTES, J., KERKEMEIER, S., MARIN, O., HEISEY, K., OBABKO, A., MERZARI, E. & PEET, Y. 2015 Nek5000 User’s manual. Technical Report ANL/MCS-TM-351, Argonne National Laboratory, <http://nek5000.mcs.anl.gov>.
- FISCHER, P. & MULLEN, J. 2001 Filter-based stabilization of spectral element methods. *C. R. Acad. Sci. I* **332** (3), 265–270.
- FITZGERALD, E.J. & JUMPER, E.J. 2004 The optical distortion mechanism in a nearly incompressible free shear layer. *J. Fluid Mech.* **512**, 416–442.
- GAYME, D.F. & MINNICK, B.A. 2019 Coherent structure-based approach to modeling wall turbulence. *Phys. Rev. Fluids* **4** (11), 110505.
- GENTILE, V., SCHRIJER, F.F.J., OUDHEUSDEN, B.W.V. & SCARANO, F. 2016 Low-frequency behavior of the turbulent axisymmetric near-wake. *Phys. Fluids* **28**, 065102.
- GÖRTLER, H. 1954 On the three-dimensional instability of laminar boundary layers on concave walls, *Technical Memorandum 1375*. National Advisory Committee for Aeronautics.
- GRANDEMANGE, M., GOHLKE, M. & CADOT, O. 2014 Statistical axisymmetry of the turbulent sphere wake. *Exp. Fluids* **55**, 1838.
- GRANDEMANGE, M., GOHLKE, M., PAREZANOVIĆ, V. & CADOT, O. 2012 On experimental sensitivity analysis of the turbulent wake from an axisymmetric blunt trailing edge. *Phys. Fluids* **24**, 035106.
- GUITTON, A., KERHERVE, F., JORDAN, P. & DELVILLE, J. 2008 The sound production mechanism associated with coherent structures in subsonic jets. In *14th AIAA/CEAS Aeroacoustics Conference*, p. 2892.
- HU, W., HICKEL, S. & VAN OUDHEUSDEN, B.W. 2021 Low-frequency unsteadiness mechanisms in shock wave/turbulent boundary layer interactions over a backward-facing step. *J. Fluid Mech.* **915**, A107.
- HUSSAIN, A.K.M.F. 1986 Coherent structures and turbulence. *J. Fluid Mech.* **173**, 303–356.
- JIMÉNEZ, J.J., HULTMARK, M. & SMITS, A.J. 2010 The intermediate wake of a body of revolution at high Reynolds numbers. *J. Fluid Mech.* **659**, 516–539.
- KIM, H.J. & DURBIN, P.A. 1988 Observations of the frequencies in a sphere wake and of drag increase by acoustic excitation. *Phys. fluids* **31** (11), 3260–3265.
- KREISS, H.-O. & OLIGER, J. 1972 Comparison of accurate methods for the integration of hyperbolic equations. *Tellus* **24** (3), 199–215.
- KUMAR, P. & MAHESH, K. 2018 Large-eddy simulation of flow over an axisymmetric body of revolution. *J. Fluid Mech.* **853**, 537–563.
- MAGARVEY, R.H. & BISHOP, R.L. 1961 Transition ranges for three-dimensional wakes. *Can. J. Phys.* **39** (10), 1418–1422.
- MARIOTTI, A. & BURESTI, G. 2013 Experimental investigation on the influence of boundary layer thickness on the base pressure and near-wake flow features of an axisymmetric blunt-based body. *Exp. Fluids* **54** (11), 1–16.
- MELIGA, P., CHOMAZ, J.-M. & SIPP, D. 2009 Global mode interaction and pattern selection in the wake of a disk: a weakly nonlinear expansion. *J. Fluid Mech.* **633**, 159–189.
- MENGALDO, G., DE GRAZIA, D., MOXEY, D., VINCENT, P.E. & SHERWIN, S.J. 2015 Dealiasing techniques for high-order spectral element methods on regular and irregular grids. *J. Comput. Phys.* **299**, 56–81.
- MITTAL, R., WILSON, J.J. & NAJJAR, F.M. 2002 Symmetry properties of the transitional sphere wake. *AIAA J.* **40** (3), 579–582.
- MORRISON, G.L. 1982 The role of coherent structures in the generation of noise for subsonic jets. *NASA Tech. Rep.* NASA-CR-168764.
- NATARAJAN, R. & ACRIVOS, A. 1993 The instability of the steady flow past sphere and disks. *J. Fluid Mech.* **254**, 323–344.

- PAL, A., SARKAR, S., POSA, A. & BALARAS, E. 2017 Direct numerical simulation of stratified flow past a sphere at a subcritical Reynolds number of 3700 and moderate Froude number. *J. Fluid Mech.* **826**, 5–31.
- PASTOOR, M., HENNING, L., NOACK, B.R., KING, R. & TADMOR, G. 2008 Feedback shear layer control for bluff body drag reduction. *J. Fluid Mech.* **608**, 161–196.
- PATERA, A.T. 1984 A spectral element method for fluid dynamics: laminar flow in a channel expansion. *J. Comput. Phys.* **54**, 468–488.
- PAVIA, G., VARNEY, M., PASSMORE, M. & ALMOND, M. 2019 Three dimensional structure of the unsteady wake of an axisymmetric body. *Phys. Fluids* **31**, 025113.
- PIER, B. 2008 Local and global instabilities in the wake of a sphere. *J. Fluid Mech.* **603**, 39–61.
- POSA, A. & BALARAS, E. 2016 A numerical investigation of the wake of an axisymmetric body with appendages. *J. Fluid Mech.* **792**, 470–498.
- RIGAS, G., MORGANS, A.S., BRACKSTON, R.D. & MORRISON, J.F. 2015 Diffusive dynamics and stochastic models of turbulent axisymmetric wakes. *J. Fluid Mech.* **778**, R2.
- RIGAS, G., OXLADE, A., MORGANS, A. & MORRISON, J. 2014 Low-dimensional dynamics of a turbulent axisymmetric wake. *J. Fluid Mech.* **755**, R5.
- ROBINSON, S.K. 1991 Coherent motions in the turbulent boundary layer. *Annu. Rev. Fluid Mech.* **23** (1), 601–639.
- RODRIGUEZ, I., BORELL, R., LEMKUHLE, O. & OLIVA, A. 2011 Direct numerical simulation of the flow over a sphere at $Re = 3700$. *J. Fluid Mech.* **679**, 263–287.
- ROWE, A., FRY, A.L.A. & MOTALLEBI, F. 2001 Influence of boundary-layer thickness on base pressure and vortex shedding frequency. *AIAA J.* **39** (4), 754–756.
- SAKAMOTO, H. & HANIU, H. 1990 A study on vortex shedding from spheres in a uniform flow. *Trans. ASME J. Fluids Engng* **112**, 386.
- SAKIEVICH, P.J., PEET, Y.T. & ADRIAN, R.J. 2020 Temporal dynamics of large-scale structures for turbulent Rayleigh–Bénard convection in a moderate aspect-ratio cylinder. *J. Fluid Mech.* **901**, A31.
- SCHRIJER, F.F.J., SCIACCHITANO, A. & SCARANO, F. 2014 Spatio-temporal and modal analysis of unsteady fluctuations in a high-subsonic base flow. *Phys. Fluids* **26**, 086101.
- SEIDL, V., MUZAFERIJ, S. & PERIĆ, M. 1997 Parallel DNS with local grid refinement. *Appl. Sci. Res.* **59** (4), 379–394.
- SIEVERDING, C.H. & HEINEMANN, H. 1990 The influence of boundary layer state on vortex shedding from flat plates and turbine cascades. *ASME J. Turbomach.* **112**, 181–187.
- SMITH, A.E., GORDEYEV, S. & JUMPER, E. 2011 Aero optics of subsonic boundary layers over backwards steps. In *42nd AIAA Plasmadynamics and Lasers Conference, Honolulu, HI. AIAA Paper 2011-3277*.
- SMITH, A.M.O. 1955 On the growth of Taylor–Görtler vortices along highly concave walls. *Q. Appl. Maths* **13** (3), 233–262.
- SPALART, P.R. & STRELETS, M.K. 2000 Mechanisms of transition and heat transfer in a separation bubble. *J. Fluid Mech.* **403**, 329–349.
- TAIRA, K., BRUNTON, S.L., DAWSON, S.T.M., ROWLEY, C.W., COLONIUS, T., MCKEON, B.J., SCHMIDT, O.T., GORDEYEV, S., THEOFILIS, V. & UKEILEY, L.S. 2017 Modal analysis of fluid flows: an overview. *AIAA J.* **55**, N12.
- TANEDA, S. 1978 Visual observations of the flow past a sphere at Reynolds numbers between 10^4 and 10^6 . *J. Fluid Mech.* **85** (1), 187–192.
- TANI, I. 1964 Low-speed flows involving bubble separations. *Prog. Aerosp. Sci.* **5**, 70–103.
- TOMBOULIDES, A.G. & ORSZAG, S.A. 2000 Numerical investigation of transitional and weak turbulent flow past a sphere. *J. Fluid Mech.* **416**, 45–73.
- DE LA TORRE, A. & BURGUETE, J. 2007 Slow dynamics in a turbulent von Kármán swirling flow. *Phys. Rev. Lett.* **99** (5), 054101.
- VANIERSCHOT, M. & VAN DEN BULCK, E. 2011 Experimental study of low precessing frequencies in the wake of a turbulent annular jet. *Exp. Fluids* **50** (1), 189–200.
- VILAPLANA, G., GRANDEMANGE, M., GOHLKE, M. & CADOT, O. 2013 Global model of a sphere controlled by a small sphere. *J. Fluids Struct.* **41**, 119–126.
- WANG, Z.J., *et al.* 2013 High-order CFD methods: current status and perspective. *Intl J. Numer. Meth. Fluids* **72**, 811.
- WEISS, J., MOHAMMED-TAIFOUR, A. & SCHWAAB, Q. 2015 Unsteady behavior of a pressure-induced turbulent separation bubble. *AIAA J.* **53** (9), 2634–2645.
- WOLF, C.C., KLEI, C.E., BUFFO, R.M., HÖRNSCHEMEYER, R. & STUMPF, E. 2012 Comparison of rocket near-wakes with and without nozzle simulation in subsonic freestream conditions. In *42nd AIAA Fluid Dynamics Conference and Exhibit, New Orleans, LA. AIAA Paper 2012-3019*.

Coherent motions in a turbulent wake of an axisymmetric body

- WU, J.-S. & FAETH, G.M. 1993 Sphere wakes in still surroundings at intermediate Reynolds numbers. *AIAA J.* **31** (8), 1448–1455.
- WU, W., MENEVEAU, C. & MITTAL, R. 2020 Spatio-temporal dynamics of turbulent separation bubbles. *J. Fluid Mech.* **883**, A45.
- YANG, J., LIU, M., WU, G., LIU, Q. & ZHANG, X. 2015 Low-frequency characteristics in the wake of a circular disk. *Phys. Fluids* **27** (6), 064101.
- YANG, J., LIU, M., WU, G., ZHONG, W. & ZHANG, X. 2014 Numerical study on coherent structure behind a circular disk. *J. Fluids Struct.* **51**, 172–188.
- YUN, G., KIM, D. & CHOI, H. 2006 Vortical structures behind a sphere at subcritical Reynolds numbers. *Phys. Fluids* **18**, 015102.
- ZHANG, F. & PEET, Y.T. 2022 The dynamics of coherent structures in a turbulent wake past a sphere at $Re = 3700$. In *Proceedings of 12th Int. Symp. on Turbulence and Shear Flow Phenomena, Osaka, Japan*.
- ZHANG, Q., LEE, S.W. & LIGRANI, P.M. 2004 Effects of surface roughness and freestream turbulence on the wake turbulence structure of a symmetric airfoil. *Phys. Fluids* **16**, 2044–2053.
- ZHU, T. & MORRISON, F. 2021 Simulation of the turbulent axisymmetric bluff body wake with pulsed jet forcing. *Phys. Rev. Fluids* **6**, 124604.