


Ascaris lumbricoides eggs or artefacts? A diagnostic conundrum

M. P. Maurelli¹ , L. C. Alves², C. S. Aggarwal³, P. Cociancic^{1,4}, B. Levecke⁵, P. Cools⁵, A. Montresor⁶, D. Ianniello¹, L. Gualdieri⁷, G. Cringoli¹ and L. Rinaldi¹

Research Article

Cite this article: Maurelli MP *et al.* (2021). *Ascaris lumbricoides* eggs or artefacts? A diagnostic conundrum. *Parasitology* **148**, 1554–1559. <https://doi.org/10.1017/S0031182021001256>

Received: 25 April 2021

Revised: 29 June 2021

Accepted: 4 July 2021

First published online: 12 July 2021

Key words:

Ascaris lumbricoides; artefacts, decorticated eggs; misdiagnosis; Mini-FLOTAC; Kato-katz

Author for correspondence:

M. P. Maurelli, E-mail: mariapaola.maurelli@unina.it

¹Department of Veterinary Medicine and Animal Production, University of Naples Federico II, CREMOPAR, WHO Collaborating Centre ITA-116, Naples, Italy; ²Department of Veterinary Medicine, Federal Rural University of Pernambuco, Recife, Brazil; ³Division of Parasitic Diseases, National Centre for Disease Control, 22 Shamnath Marg, Delhi, India; ⁴Centro de Estudios Parasitológicos y de Vectores (CEPAVE-CONICET-UNLP-asociado a CICPBA), La Plata, Buenos Aires, Argentina; ⁵Department of Virology, Parasitology and Immunology, Faculty of Veterinary Medicine, Ghent University, WHO Collaborating Centre BEL-42, Merelbeke, Belgium; ⁶Department of Control of Neglected Tropical Diseases, World Health Organization, Geneva, Switzerland and ⁷Medical Center, Centro per la Tutela della Salute degli Immigrati, Naples, Italy

Abstract

Due to the presence of artefacts in stool samples, the copromicroscopic diagnosis of *Ascaris lumbricoides* is not always straightforward, particularly in the case of fertilized decorticated eggs. A total of 286 stool samples from 115 schoolchildren in India and 171 adult immigrants in Italy were screened for the presence of *A. lumbricoides* eggs by both Kato-Katz thick smear and Mini-FLOTAC. If the outer layer of *A. lumbricoides* eggs was absent, two aliquots of each stool sample were preserved: one for coproculture to identify larvae after development and one to compose a pool of stool for molecular analysis. A total of 64 stool samples (22.4%) were positive for *A. lumbricoides* using the Kato-Katz thick smear; 36 (56.3%) of these showed mammillated *A. lumbricoides* eggs, 25 (39.1%) showed elements resembling fertilized decorticated eggs, while three samples (4.7%) showed both mammillated and decorticated eggs. By Mini-FLOTAC, 39 stool samples (13.6%) were positive, while decorticated *A. lumbricoides*-like eggs were identified as artefacts. These results were confirmed by negative coprocultures and quantitative polymerase chain reaction. Mini-FLOTAC can be used for a reliable diagnosis of *A. lumbricoides*, thanks to the flotation and translation features which allow a clearer view, resulting in the correct identification of *A. lumbricoides* eggs.

Introduction

Ascaris lumbricoides infects about 820 million people and is prevalent in at least 103 of the 218 countries of the world (WHO, 2017, 2020). In general, preschool-age and school-age children are at higher risk of infection, because they are more likely to ingest soil, food or water contaminated with infectious stages (egg with 3rd stage larva) (Jourdan *et al.*, 2018). Diagnosis of *A. lumbricoides* infections is based on the microscopic detection of eggs in stool. However, the morphological identification of *A. lumbricoides* eggs by stool microscopy is not always straightforward and requires specially trained laboratory personnel (Montresor *et al.*, 2020). Interestingly, *A. lumbricoides* eggs may appear in three different forms: unfertilized, fertilized corticated and fertilized decorticated (WHO, 2019). Unfertilized eggs are elongated and larger than fertile eggs (~90 µm in length), their shell is thinner and the mammillated layer is more variable, either with large protuberances or practically none (Fig. 1A) (WHO, 2019). Fertilized corticated eggs are round-shaped, 45–75 µm in diameter (Fig. 1B) and have a thick shell with an external mammillated layer (indicated in Fig. 1B with a green line). In some cases, the outer layer is absent (fertilized decorticated eggs) (Fig. 1C). Due to this polymorphism, non-parasitic elements (artefacts) can be sometimes misidentified as *A. lumbricoides* eggs (Colmer-Hamood, 2001; Ash and Orihel, 2007; Speich *et al.*, 2015; WHO, 2016; Benjamin-Chung *et al.*, 2020). Identification of artefacts (e.g. pollen, plant cells, psocid insects, etc.) is an integral part of the diagnosis process to avoid common misdiagnosis in the laboratory (Podhorsky, 2011; Szwabe and Kurnatowski, 2012; Lanocha *et al.*, 2016). In order to distinguish between parasitic and non-parasitic elements, technicians should be well trained and experienced on the complex characteristics of parasite eggs (e.g. size, shape, shell structure and internal features in the case of *A. lumbricoides* eggs) (Colmer-Hamood, 2001; Ash and Orihel, 2007; Garcia, 2007; Garcia *et al.*, 2018; WHO, 2019).

To date, there are a variety of laboratory methods used to detect *A. lumbricoides*, but some are more prone to misdiagnosis than others. For example, when applying methods based on a stool smear (e.g. Kato-Katz thick smear and direct smear), the microscopic view is often troubled by debris, increasing the risk of misclassification of artefacts as *A. lumbricoides* (Speich *et al.*, 2015). This is in contrast to flotation-based methods (e.g. (Mini-)FLOTAC, McMaster and FECPAK^{G2}), where the microscopic view is clear by allowing eggs to float to the surface of the device (debris will not float and will be separated from the eggs) (Barda *et al.*, 2014; Cringoli *et al.*, 2017; Ayana *et al.*, 2019). The Mini-FLOTAC technique

© The Author(s), 2021. Published by Cambridge University Press. This is an Open Access article, distributed under the terms of the Creative Commons Attribution-NonCommercial-NoDerivatives licence (<http://creativecommons.org/licenses/by-nc-nd/4.0/>), which permits non-commercial re-use, distribution, and reproduction in any medium, provided the original work is unaltered and is properly cited. The written permission of Cambridge University Press must be obtained for commercial re-use or in order to create a derivative work.

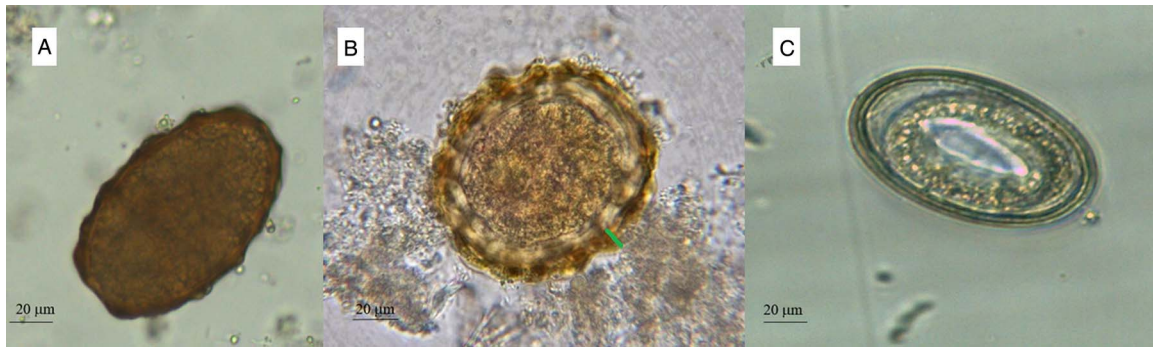


Fig. 1. Unfertilized (A), fertilized mammillated (B) and fertilized decorticated (C) eggs of *Ascaris lumbricoides*. Mammillated layer is indicated with a green line.

(Cringoli *et al.*, 2017) has proven to be a reliable method for diagnosis of *A. lumbricoides* and other soil-transmitted helminths (STHs) (Barda *et al.*, 2014; Benjamin-Chung *et al.*, 2015; Lamberton and Jourdan, 2015; Lim *et al.*, 2018; Dukpa *et al.*, 2020). Comparisons performed between Mini-FLOTAC technique and Kato-Katz thick smear showed a higher specificity of the first method (Assefa *et al.*, 2014) and a similar sensitivity (Assefa *et al.*, 2014; Barda *et al.*, 2014, 2015; Nikolay *et al.*, 2014) with Kato-Katz direct smear. This paper describes the findings of either *A. lumbricoides* eggs or artefacts in stool samples from two cohorts analysed by both the Kato-Katz thick smear and Mini-FLOTAC, using additional methods (i.e. coprocultures and molecular techniques) to validate microscopical identification of *A. lumbricoides*.

Materials and methods

Stool samples ($n = 286$) used for this study were obtained from (i) a survey conducted in November 2019 in 115 schoolchildren (6–10 years old) at a primary school in Delhi, India and (ii) a survey conducted in November 2020 in 171 adult (>18 years) immigrants in Naples, Italy. These immigrants were mainly from Bangladesh, Pakistan and western and southern Africa. The stool samples were analysed by applying both Kato-Katz thick smear and Mini-FLOTAC (Fig. 2). The Kato-Katz was performed using the 41.7 mg template, after filtration of stool samples. A piece of cellophane (which has been soaked overnight in glycerol malachite green solution) was placed over the stool sample for 1 h before reading. For the Mini-FLOTAC, 2 g of stool were placed in the Fill-FLOTAC and then diluted and homogenized with 38 mL of zinc sulphate flotation solution (specific gravity = 1.35; dilution ratio 1:20). After a careful homogenization (by pumping the conical collector of the Fill-FLOTAC up and down ten times, while turning to the right and left), Mini-FLOTAC chambers were filled and translated after 10 min. The standard operating procedures described in the WHO Bench Aids for the diagnosis of intestinal parasites were used for both techniques (WHO, 2019). *Ascaris lumbricoides* eggs were identified according to the WHO guidelines (which describe their characteristics to recognize them) (WHO, 2012, 2017), photographed and measured using a light microscope (Leica DM 1000, Leica Microsystems, Wetzlar, Germany) and LAS ver. 4.13 software (Leica Microsystems, Wetzlar, Germany), at 20 \times and 40 \times magnifications. In order to ensure the quality of parasitological examination, the operator that prepared samples to analyse provided randomized Kato-Katz thick smears and Mini-FLOTACs to the reader to obtain blinded results, without influences on comparison between the two techniques. Moreover, to avoid possible bias in reading (i.e. misdiagnosis), all slides were analysed by an experienced microscopist on eggs recognizing.

The prevalence and the 95% confidence interval (95% CI) of *A. lumbricoides* eggs and artefacts was calculated for both populations (i.e. from Indian children and from immigrants in Italy) using free online software ‘Sample Size Calculator’ (Creative Research Systems, CA, USA). The non-parametric Mann–Whitney U test was used to compare the difference in eggs per gram of faeces detected by the two methods (Mini-FLOTAC and Kato-Katz) using SPSS Statistics v.23 (IBM, Armonk, NY, USA). The test was considered statistically significant at $P < 0.05$.

If the outer layer of *A. lumbricoides* eggs was absent, two aliquots of each stool sample were preserved for further analysis as follows: one at +4°C for coprocultures and another at –20°C for molecular analysis. For the coprocultures, an aliquot of each sample was diluted in tap water and the suspension was filtered through a wire mesh (aperture of 250 μm). The suspension obtained was centrifuged at 170 $\times g$ for 3 min. The sediment containing the eggs was cultured in culture flasks at +25°C for 20 days (WHO, 2004; Kim *et al.*, 2012). Then, the samples were analysed under a microscope, to evaluate the presence of developed larvae inside the eggs.

For molecular analysis, two pooled stool samples (one from Indian samples and one from immigrants in Italy) were prepared taking 0.5 g of faeces from each sample only with dubious fertilized decorticated *A. lumbricoides* eggs (15 samples for the pool of Indian children’s stools and 10 samples for the pool of immigrants’ stools), then after a careful homogenization, 0.25 g of faeces were used for DNA extraction by the DNeasy Blood & Tissue kit (Qiagen, Hilden, Germany). The quantitative polymerase chain reaction (qPCR) was performed as described by Cools *et al.* (2019) with minor modifications. The reactions were performed in a final reaction mixture of 20 μL , containing 10 μL of FastStart PCR Master Mix (Roche, Rotkreuz, Switzerland), 1.2 μL of both forward and reverse primers (both at 10 μM), 0.95 μL of probe (10 μM) and 5 μL of DNA template. The primers and probe used were 5’-GTAATAGCAGTCGCGGGTTTCTT-3’ (forward) (Liu *et al.*, 2016), 5’-GCCCAACATGCCACCTATTC-3’ (reverse) (Liu *et al.*, 2016) and Texas Red-TTGGCGGACAATTGCATGCGAT-BHQ2 (probe) (Wiria *et al.*, 2010). The PCR amplification was performed in a StepOnePlus real-time PCR system (Applied Biosystems, Foster City, CA, USA), using the following thermal profile: 50°C for 2 min, 95°C for 10 min, 45 cycles of 10 s at 95°C, 30 s at 60°C. The results were expressed in genome equivalents per mL of stool DNA extract (GE/mL).

Results

A total of 64/286 (22.4%; 95% CI = 17.8–27.7) stool samples (37/115 = 32.2%, 95% CI = 23.9–41.6 for Indian children and 27/171 = 15.8%, 95% CI = 10.8–22.3 for immigrants in Italy) were classified as positive for *A. lumbricoides* using the

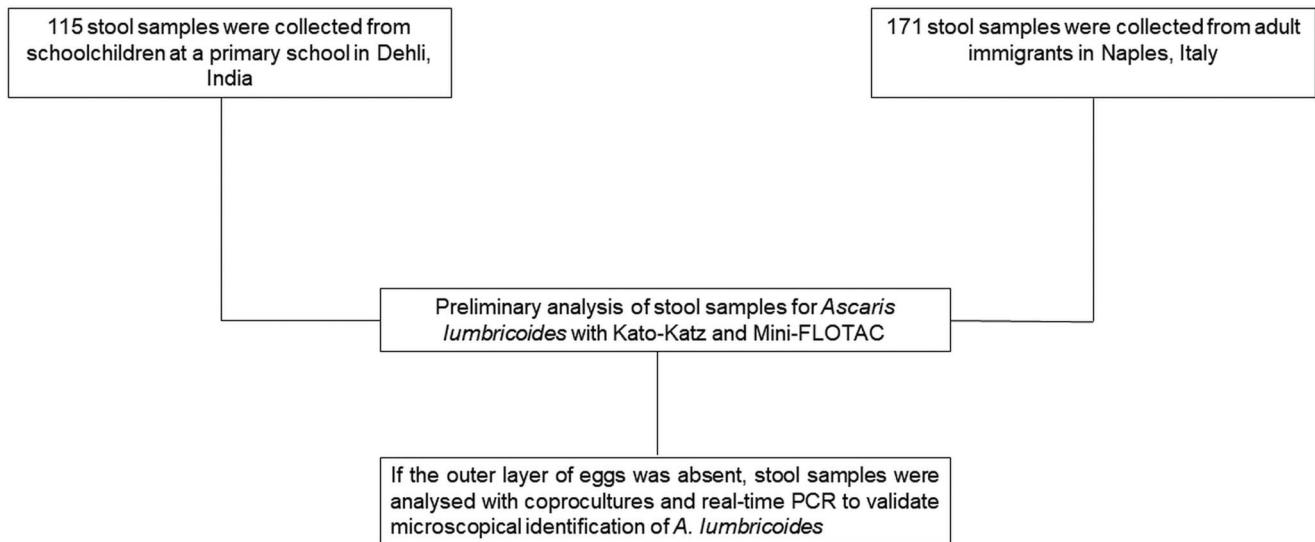


Fig. 2. Study design.

Kato-Katz technique. Of all the positive stool samples, 36 samples showed mammillated (Fig. 1A and B) *A. lumbricoides* eggs (56.3%; 95% CI = 43.3–68.4), 25 elements ascribable to fertilized decorticated eggs (39.1%; 95% CI = 27.4–52.1) (Fig. 3), while three samples showed mammillated and fertilized decorticated eggs (4.7%; 95% CI = 1.2–14.0).

A total of 39/286 stool samples (13.6%; 95% CI = 10.0–18.3; 22/115 = 19.1%, 95% CI = 12.6–27.8 for Indian children and 17/171 = 9.9%, 95% CI = 6.1–15.7 for immigrants in Italy) were classified as positive for *A. lumbricoides* by Mini-FLOTAC. The elements identified as fertilized decorticated *A. lumbricoides* eggs in 28 samples by Kato-Katz were identified as artefacts by Mini-FLOTAC, because they were different in size and in morphology (i.e. size often was larger than 65 μm and internal granular nature was not present) from fertilized decorticated eggs of *A. lumbricoides*. Mini-FLOTAC provided statistically significant ($P < 0.05$) higher mean *A. lumbricoides* egg counts than the Kato-Katz technique (285 vs 174 eggs per gram of stool) for the 39 positive samples for both techniques. All the results obtained for each technique are summarized in Table 1. Coprocultures performed on all the 28 dubious stool samples, with fertilized decorticated eggs, confirmed that no larvated eggs were identified after incubation. Moreover, negative results were obtained also by qPCR performed on the same dubious samples, grouped in two pools: one for Indian samples and another for immigrant samples. For these reasons, these elements were identified as artefacts, probably referable to pollen grains.

Discussion

The current global strategy by the WHO is to achieve and maintain the STH moderate-to-heavy intensity to less than 2% reducing the preventive chemotherapy (PC) deworming programmes based on albendazole or mebendazole treatment of pre-school and school age children living in endemic areas. However, an accurate diagnosis is necessary for an appropriate strategy of intervention, as well as for monitoring the impact of PC programmes.

The clinical diagnosis of STH is not possible, because infected people might be asymptomatic or showing unspecific signs (Shalaby and Shalaby, 2016). For these reasons, currently, the diagnosis of *A. lumbricoides*, as for the other STHs, relies on the microscopic demonstration of eggs in stool (Cools *et al.*, 2019; Momčilović *et al.*, 2019). However, the main problem in



Fig. 3. Elements ascribable to fertilized decorticated *A. lumbricoides* eggs founded in Kato-Katz.

parasite identification is distinguishing the parasitic structures from artefacts that can be present in stool samples, especially for *A. lumbricoides* that can be easier misclassified (Colmer-Hamood, 2001; Garcia *et al.*, 2018). Moreover, the presence of artefacts can perturb the eggs per gram of faeces (EPG) evaluation especially when the level of infection is low (<5000 EPG for *A. lumbricoides*, Cools *et al.*, 2019). This error can diminish when the infections are moderate-heavy and the fraction of artefacts is lower than 'true' eggs value.

In this study, the Mini-FLOTAC discriminated correctly between parasitic elements and artefacts, as reported in 'Results'.

The Mini-FLOTAC, indeed, thanks to the flotation (using a flotation solution with a specific gravity able to evidence precise parasitic elements) and translation features, allows the complete separation of parasitic elements and debris in counting chambers, with a subsequent clearer view that facilitates a correct differential diagnosis between parasitic eggs and artefacts. This technique was used previously and compared with Kato-Katz for *A. lumbricoides*

Table 1. Summary of results obtained with Kato-Katz thick smear and Mini-FLOTAC for the diagnosis of *Ascaris lumbricoides* in stool samples from two cohorts (school-age children from India and adult immigrants in Italy)

Elements identified in stool	Indian children (n = 115)				Immigrants in Italy (n = 171)			
	Kato-Katz <i>n</i> positive samples (Prevalence%; 95% CI)	Mini-FLOTAC <i>n</i> positive samples (Prevalence%; 95% CI)	Kato-Katz mean EPG	Mini-FLOTAC mean EPG	Kato-Katz <i>n</i> positive samples (Prevalence%; 95% CI)	Mini-FLOTAC <i>n</i> positive samples (Prevalence%; 95% CI)	Kato-Katz mean EPG	Mini-FLOTAC mean EPG
<i>A. lumbricoides</i> eggs	20 (17.4; 11.2–25.8)	22 (19.1; 12.6–27.8)	216	350	16 (9.4; 5.6–15.0)	17 (9.9; 6.1–15.7)	120	220
Artefacts	15 (13.0; 7.7–20.9)	0 (0; 0.1–4.0)	72	0	10 (5.8; 3.0–10.8)	0 (0; 0.1–2.7)	48	0
<i>A. lumbricoides</i> + artefacts	2 (1.7; 0.3–6.8)	0 (0; 0.1–4.0)	264 + 96	0	1 (0.6; 0.0–3.7)	0 (0; 0.1–2.7)	96 + 24	0

detection with similar sensitivity and higher specificity. However, using the appropriate flotation solution higher sensitivity can be obtained (Barda *et al.*, 2014; Lamberton and Jourdan, 2015). Indeed, the choice of the flotation solution is of utmost importance to increase the sensitivity to detect parasitic elements and to easily distinguish the artefacts from eggs (Cringoli *et al.*, 2010). Based on the above-mentioned advantages, in 2019, the Mini-FLOTAC was included in the WHO guidelines among the suggested techniques for STH diagnosis (WHO, 2019).

One limitation of our study was that we could not confirm by molecular techniques if the artefacts that we found were vegetable material, pollen grains or other elements as food residues, because we did not have enough quantity of stool. The use of innovative tools such as fluorescent dyes for a rapid discrimination between *A. lumbricoides* eggs and artefacts could be very useful to facilitate egg identification. This approach was used previously to evaluate viability of some eggs, e.g. *Schistosoma haematobium* and *Ascaris suum* (Włodarczyk *et al.*, 2017; Forson *et al.*, 2019). The permeable fluorescent dyes penetrate in the intact structures of cells, emitting light of different colours which permit to distinguish between live and dead eggs.

Moreover, recent advances in parasitological diagnosis are based on the development of semi-automated and automated systems (e.g. smartphone-based technologies, digital microscopes, etc.) combined with image analysis (e.g. FECPAK^{G2}, Lab-on Disk Platform, Kubic FLOTAC Microscope, etc.) for the detection of helminth eggs. These systems are currently improving to increase the sensitivity and accuracy or to reduce the costs or to validate the tools in the lab and/or in the field (Cringoli *et al.*, 2021). However, automated identification and counting of STH eggs, based on artificial intelligence will be very useful in order to reduce human errors and time of reading, increasing diagnostic efficiency (Lu *et al.*, 2018; Moser *et al.*, 2018; Sukas *et al.*, 2019; Cringoli *et al.*, 2021). Moreover, often these tools permit also to transfer *via* internet the captured pictures to other laboratories, supporting the technicians also directly in the field (Tele-Parasitology) (Cringoli *et al.*, 2021). Therefore, in this way, it will be possible also to achieve one of the main goals of the WHO NTD 2021–2030 roadmap to control and eliminate STH in endemic regions, using standardized and advanced diagnostic techniques (WHO, 2020).

Data

All data generated or analysed during this study are included in this published article. The datasets used and/or analysed during the present study available from the corresponding author upon reasonable request.

Acknowledgements. The authors thank all the staff of National Centre for Disease Control in New Delhi (India) for their collaboration to collect and process the stool samples at the NCDC laboratory.

Author contributions.

MPM, LCA, PC, BL, PC, DI and LG: performed sampling and laboratory analyses. AM, GC, CSA and LR: conceived the study. All authors contributed to data analysis and interpretation, and preparation of the manuscript. All authors read and approved the final manuscript.

Financial support. This research did not receive any specific grant from funding agencies in the public, commercial or not-for-profit sectors.

Conflict of interest. The Mini-FLOTAC technique was developed and is patented by GC, but the patent has been handed over to the University of Naples Federico II. The fact that GC is the current patent holder of the Mini-FLOTAC and Fill-FLOTAC had no role in the preparation and submission of the protocols reported or the design and implementation of ongoing and future studies. To obtain Mini-FLOTAC or Fill-FLOTAC devices, a contribution is required that is used only to cover costs of production and

packaging, and to contribute to the ongoing FLOTAC research. The remaining authors declare that they have no competing interests.

Ethical standards. This research was included in the monitoring activities on STHs by the WHO.

References

- Ash LR and Orihel TC (2007) *Atlas of Human Parasitology*, 5th Edn. Chicago, Illinois, USA: American Society for Clinical Pathology Press.
- Assefa LM, Crellen T, Kepha S, Kihara JH, Njenga SM, Pullan RL and Brooker SJ (2014) Diagnostic accuracy and cost-effectiveness of alternative methods for detection of soil-transmitted helminths in a post-treatment setting in western Kenya. *PLoS Neglected Tropical Diseases* **8**, e2843.
- Ayana M, Cools P, Mekonnen Z, Biruksew A, Dana D, Rashwan N, Prichard R, Vlamincck J, Verweij JJ and Levecke B (2019) Comparison of four DNA extraction and three preservation protocols for the molecular detection and quantification of soil-transmitted helminths in stool. *PLoS Neglected Tropical Diseases* **13**, e0007778.
- Barda B, Cajal P, Villagran E, Cimino R, Juarez M, Krolewiecki A, Rinaldi L, Cringoli G, Burioni R and Albonico M (2014) Mini-FLOTAC, Kato-Katz and McMaster: three methods, one goal; highlights from north Argentina. *Parasites & Vectors* **7**, 271.
- Barda B, Albonico M, Ianniello D, Ame SM, Keiser J, Speich B, Rinaldi L, Cringoli G, Burioni R, Montresor A and Utzinger J (2015) How long can stool samples be fixed for an accurate diagnosis of soil-transmitted helminth infection using Mini-FLOTAC? *PLoS Neglected Tropical Diseases* **9**, e0003698.
- Benjamin-Chung J, Nazneen A, Halder AK, Haque R, Siddique A, Uddin MS, Koporc K, Arnold BF, Hubbard AE, Unicomb L, Luby SP, Addiss DG and Colford JM (2015) The interaction of deworming, improved sanitation, and household flooring with soil-transmitted helminth infection in rural Bangladesh. *PLoS Neglected Tropical Diseases* **9**, e0004256.
- Benjamin-Chung J, Pilotte N, Erccumen A, Grant JR, Maasch JRMA, Gonzalez AM, Ester AC, Arnold BF, Rahman M, Haque R, Hubbard AE, Luby SP, Williams SA and Colford JM (2020) Comparison of multiplexed qPCR and double-slide Kato-Katz for detection of soil-transmitted helminth infection among children in rural Bangladesh. *PLoS Neglected Tropical Diseases* **14**, e0008087.
- Colmer-Hamood JA (2001) Fecal microscopy: artifacts mimicking ova and parasites. *Laboratory Medicine* **32**, 80–84.
- Cools P, Vlamincck J, Albonico M, Ame S, Ayana M, José Antonio BP, Cringoli G, Dana D, Keiser J, Maurelli MP, Maya C, Matoso LF, Montresor A, Mekonnen Z, Mirams G, Corrêa-Oliveira R, Pinto SA, Rinaldi L, Sayasone S, Thomas E, Verweij JJ, Vercruyse J and Levecke B (2019) Diagnostic performance of a single and duplicate Kato-Katz, Mini-FLOTAC, FECPAK^{G2} and qPCR for the detection and quantification of soil-transmitted helminths in three endemic countries. *PLoS Neglected Tropical Diseases* **13**, e0007446.
- Cringoli G, Rinaldi L, Maurelli MP and Utzinger J (2010) FLOTAC: new multivalent techniques for qualitative and quantitative copromicroscopic diagnosis of parasites in animals and humans. *Nature Protocols* **5**, 503–515. doi: 10.1038/nprot.2009.235
- Cringoli G, Maurelli MP, Levecke B, Bosco A, Vercruyse J, Utzinger J and Rinaldi L (2017) The Mini-FLOTAC technique for the diagnosis of helminth and protozoan infections in humans and animals. *Nature Protocols* **12**, 1723–1732.
- Cringoli G, Amadesi A, Maurelli MP, Celano B, Piantadosi G, Bosco A, Ciuca L, Cesarelli M, Bifulco P, Montresor A and Rinaldi L (2021) The Kubic FLOTAC microscope (KFM): a new compact digital microscope for helminth egg counts. *Parasitology* **148**, 427–434. doi: 10.1017/S003118202000219X
- Dukpa T, Dorji N, Thinley S, Wangchuk, Tshering K, Gyem K, Wangmo D, Sherpa PL, Dorji T and Montresor A (2020) Soil-transmitted Helminth infections reduction in Bhutan: a report of 29 years of deworming. *PLoS One* **15**(1), e0227273. doi: 10.1371/journal.pone.0227273
- Forsom PO, Tetteh-Quarcoop PB, Ahenkorah J, Aryee R, Okine EN, Afutu E, Djameh GI, Agyapong J, Anang AK and Aye-Kumi PF (2019) Ability of vital and fluorescent staining in the differentiation of *Schistosoma haematobium* live and dead eggs. *Medical Sciences* **7**, 64.
- Garcia LS (2007) *Diagnostic Medical Parasitology*, 5th Edn., Washington, DC, USA: ASM Press.
- Garcia LS, Arrowood M, Kokoskin E, Paltridge GP, Pillai DR, Procop GW, Ryan N, Shimizu RY and Visvesvara G (2018) Practical guidance for clinical microbiology laboratories: laboratory diagnosis of parasites from the gastrointestinal tract. *Clinical Microbiology Reviews* **31**, e00025–17.
- Jourdan PM, Lamberton PH, Fenwick A and Addiss DG (2018) Soil-transmitted helminth infections. *Lancet (London, England)* **391**, 252–265.
- Kim M-K, Pyo K-H, Hwang Y-S, Park KH, Hwang IG, Chai J-Y and Shin E-H (2012) Effect of temperature on embryonation of *Ascaris suum* eggs in an environmental chamber. *The Korean Journal of Parasitology* **50**, 239–242.
- Lamberton PHL and Jourdan PM (2015) Human ascariasis: diagnostics update. *Current Tropical Medicine Reports* **2**, 189–200.
- Lanocha A, Zdziarska B, Lanocha-Arendarczyk N, Kosik-Bogacka D, Guzicka-Kazmierczak R and Marzec-Lewenstein E (2016) Respiratory failure associated with ascariasis in a patient with immunodeficiency. *Case Reports in Infectious Diseases* **2016**, 1–5.
- Lim MD, Brooker SJ, Belizario VY, Gay-Andrieu F, Gilleard J, Levecke B, van Lieshout L, Medley GF, Mekonnen Z, Mirams G, Njenga SM, Odiere MR, Rudge JW, Stuyver L, Vercruyse J, Vlamincck J, Watson JL and the Anancy STH diagnostic experts group (2018) Diagnostic tools for soil-transmitted helminths control and elimination programs: a pathway for diagnostic product development. *PLoS Neglected Tropical Diseases* **12**, e0006213.
- Liu J, Gratz J, Amour C, Nshama R, Walongo T, Maro A, Mduma E, Platts-Mills J, Boisen N, Nataro J, Haverstick DM, Kabir F, Lertsethtakarn P, Silapong S, Jeamwattanalert P, Bodhidatta L, Mason C, Begum S, Haque R, Praharij I and Houpt ER (2016) Optimization of quantitative PCR methods for enteropathogen detection. *PLoS One* **11**, e0158199.
- Lu Q, Liu G, Xiao C, Hu C, Zhang S, Xu RX, Chu K, Xu Q and Smith ZJ (2018) A modular, open-source, slide-scanning microscope for diagnostic applications in resource-constrained settings. *PLoS ONE* **13**, e0194063.
- Momcilovic S, Cantacessi C, Arsic-Arsenijevic V, Otranto D and Tasić-Otašević S (2019) Rapid diagnosis of parasitic diseases: current scenario and future needs. *Clinical Microbiology Infection* **25**(3), 290–309. doi: 10.1016/j.cmi.2018.04.028
- Montresor A, Mupfasoni D, Mikhailov A, Mwinzi P, Lucianez A, Jamsheed M, Gasimov E, Warusavithana S, Yajima A, Bisoffi Z, Buonfrate D, Steinmann P, Utzinger J, Levecke B, Vlamincck J, Cools P, Vercruyse J, Cringoli G, Rinaldi L, Blouin B and Gyorkos TW (2020) The global progress of soil-transmitted helminthiasis control in 2020 and World Health Organization targets for 2030. *PLoS Neglected Tropical Diseases* **14**, e0008505.
- Moser W, Bärenbold O, Mirams GJ, Cools P, Vlamincck J, Ali SM, Ame SM, Hattendorf J, Vounatsou P, Levecke B and Keiser J (2018) Diagnostic comparison between FECPAK^{G2} and the Kato-Katz method for analyzing soil-transmitted helminth eggs in stool. *PLoS Neglected Tropical Diseases* **12**, e0006562.
- Nikolay B, Brooker SJ and Pullan RL (2014) Sensitivity of diagnostic tests for human soil-transmitted helminth infections: a meta-analysis in the absence of a true gold standard. *International Journal for Parasitology* **44**, 765–774.
- Podhorsky M (2011) Laboratorni diagnostika pseudoparazititu, artefaktu a parazitarnich bludu [Laboratory diagnosis of pseudoparasites, artifacts and parasitic delusions]. *Klinicka Mikrobiologie a Infekcni Lekarstvi* **17**, 100–102.
- Shalaby N and Shalaby N (2016) Effect of *Ascaris lumbricoides* infection on T helper cell type 2 in rural Egyptian children. *Therapeutics and Clinical Risk Management* **12**, 379–385.
- Speich B, Ali SM, Ame SM, Albonico M, Utzinger J and Keiser J (2015) Quality control in the diagnosis of *Trichuris trichiura* and *Ascaris lumbricoides* using the Kato-Katz technique: experience from three randomised controlled trials. *Parasites & Vectors* **8**, 82.
- Sukas S, Van Dorst B, Kryj A, Lagatie O, De Malsche W and Stuyver LJ (2019) Development of a lab-on-a-disk platform with digital imaging for identification and counting of parasite eggs in human and animal stool. *Micromachines* **10**, 852.
- Szwabe K and Kurnatowski P (2012) Comparative analysis of morphometric features of the eggs of selected alimentary tract parasites and of the plant pollens. *Annals of Parasitology* **58**, 87–96.
- Wiria AE, Prasetyani MA, Hamid F, Wammes LJ, Lell B, Ariawan I, Uh HW, Wibowo H, Djuardi Y, Wahyuni S, Sutanto I, May L, Luty AJF, Verweij JJ, Sartono E, Yazdanbakhsh M and Supali T (2010) Does treatment of intestinal helminth infections influence malaria? Background and methodology of a longitudinal study of clinical, parasitological and

- immunological parameters in Nangapanda, Flores, Indonesia (ImmunoSPIN study). *BMC Infectious Diseases* **10**, 77–89. doi: 10.1186/1471-2334-10-77
- Włodarczyk M, Zdybel J, Próchniak M, Osiński Z, Karamon J, Kłapeć T and Cencek T** (2017) Viability assessment of *Ascaris suum* eggs stained with fluorescent dyes using digital colorimetric analysis. *Experimental Parasitology* **178**, 7–13.
- World Health Organization** (2012) *Soil-transmitted Helminthiases, STH: Eliminating Soil-Transmitted Helminthiases as A Public Health Problem in Children: Progress Report 2001–2010 and Strategic Plan 2011–2020*. Geneva, Switzerland: World Health Organization.
- World Health Organization** (2016) *Diagnostic Errors: Technical Series on Safer Primary Care*. Geneva, Switzerland: World Health Organization.
- World Health Organization** (2017) *Guideline: Preventive Chemotherapy to Control Soil-Transmitted Helminth Infections in at-Risk Population Groups*. Geneva, Switzerland: World Health Organization.
- World Health Organization** (2019) *Bench Aids for the Diagnosis of Intestinal Parasites*. Geneva, Switzerland: World Health Organization.
- World Health Organization** (2020) *Soil-transmitted helminth infections*. Retrieved from World Health Organization website. Available at <https://www.who.int/news-room/fact-sheets/detail/soil-transmitted-helminth-infections> (Accessed 16 November 2020).
- World Health Organization, Regional Office for the Eastern Mediterranean** (2004) *Integrated guide to Sanitary Parasitology*. Retrieved from World Health Organization website. Available at <https://apps.who.int/iris/handle/10665/116408> (Accessed 16 November 2020).