

On the bulk motion of the cerebrospinal fluid in the spinal canal

A. L. Sánchez¹, C. Martínez-Bazán², C. Gutiérrez-Montes²,
E. Criado-Hidalgo¹, G. Pawlak¹, W. Bradley³, V. Haughton⁴
and J. C. Lasheras^{1,5,†}

¹Department of Mechanical and Aerospace Engineering, University of California, San Diego, CA 92093-0411, USA

²Department of Mechanical and Mining Engineering, University of Jaén, 23071 Jaén, Spain

³Department of Radiology, University of California, San Diego, CA 92103-8749, USA

⁴Department of Radiology, University of Wisconsin, WI 53792-3252, USA

⁵Department of Bioengineering, University of California, San Diego, CA 92093-0412, USA

(Received 5 July 2017; revised 28 November 2017; accepted 14 December 2017;
first published online 20 February 2018)

Radionuclide scanning images published in *Nature* by Di Chiro in 1964 showed a downward migration along the spinal canal of particle tracers injected in the brain ventricles while also showing an upward flow of tracers injected in the lumbar region of the canal. These observations, since then corroborated by many radiological measurements, have been the basis for the hypothesis that there must be an active circulation mechanism associated with the transport of cerebrospinal fluid (CSF) deep down into the spinal canal and subsequently returning a portion back to the cranial vault. However, to date, there has been no physical explanation for the mechanism responsible for the establishment of such a bulk recirculating motion. To investigate the origin and characteristics of this recirculating flow, we have analyzed the motion of the CSF in the subarachnoid space of the spinal canal. Our analysis accounts for the slender geometry of the spinal canal, the small compliance of the dura membrane enclosing the CSF in the canal, and the fact that the CSF is confined to a thin annular subarachnoid space surrounding the spinal cord. We apply this general formulation to study the characteristics of the flow generated in a simplified model of the spinal canal consisting of a slender compliant cylindrical pipe with a coaxial cylindrical inclusion, closed at its distal end, and subjected to small periodic pressure pulsations at its open entrance. We show that the balance between the local acceleration and viscous forces produces a leading-order flow consisting of pure oscillatory motion with axial velocities on the order of a few centimetres per second and amplitudes monotonically decreasing along the length of the canal. We then demonstrate that the nonlinear term associated with the convective acceleration contributes to a second-order correction consisting of a steady streaming that generates a bulk recirculating motion of the CSF along the length of the canal with characteristic velocities two orders of magnitude smaller than the leading-order oscillatory flow. The results of the analysis of this

† Email address for correspondence: lasheras@ucsd.edu

idealized geometry of the spinal canal are shown to be in good agreement not only with experimental measurements in an *in-vitro* model but also with radiological measurements conducted in human adults.

Key words: biological fluid dynamics

1. Introduction

1.1. Anatomical and physiological considerations

The cerebrospinal fluid (CSF) is a colourless fluid that is continuously secreted from the blood plasma in the choroid plexus of the brain ventricles and fills the subarachnoid space (SAS), bathing the external surfaces of the brain and the spinal cord, as shown schematically in figure 1. At normal body temperatures, the CSF is an incompressible Newtonian fluid with constant density ρ and kinematic viscosity ν similar to those of water. The CSF is reabsorbed back into the venous circulation at fingerlike projections of the arachnoid membrane called villi and may also drain into the lymphatic vessels around the cranial cavity (Davson 1966; Cutler *et al.* 1968; Milhorat *et al.* 1971; Milhorat 1975; Chikly 1998; Boulton *et al.* 1999; Orešković & Klarica 2010). Its primary mechanical functions are to cushion the brain within the skull, thus serving as a shock absorber for the central nervous system (CNS), and to reduce the compression exerted by the brain on the stem of the spinal cord by buoyancy effects. CSF also plays an important physiological function by maintaining the electrolytic environment, transporting hormones, circulating nutrients and chemicals filtered from the blood, and removing waste products from the cell metabolism of the brain and the CNS (Greitz, Franck & Nordell 1993; Greitz & Hannerz 1996; Pollay 2010). Therefore, it is generally accepted that the absence of CSF circulation around the CNS may compromise its normal physiologic functions (Whedon & Glassey 2009).

In healthy humans, CSF secretion and reabsorption are balanced, maintaining a constant mean intracranial pressure. In adults, there are 140–170 ml of CSF at any given time, of which approximately 30 ml are in the four ventricles of the brain, 70–80 ml in the cerebral subarachnoid space, and $V = 40\text{--}60$ ml in the spinal SAS Ambarki *et al.* 2012. In normal physiological conditions, the mean rate of CSF production and reabsorption is $0.3\text{--}0.4$ ml min^{-1} ($400\text{--}600$ ml day^{-1}) which means that the entire volume of CSF bathing the CNS is replaced every 6–10 h (Davson 1966; Milhorat 1969; Johanson *et al.* 2008; Pardridge 2011).

The volume of the cranial vault is filled by the brain, the CSF and blood, and is enclosed by the rigid skull, which is connected at its base (foramen magnum) to a compliant slender spinal canal enclosing the spinal cord, of length $L \sim 60\text{--}80$ cm. The spinal SAS, filled with CSF, is a thin annular canal bounded internally by the pia mater, which surrounds the spinal cord, and externally by the deformable dura membrane, as indicated in figure 1. The average intracranial volume in an adult is 1700 ml, with the brain tissue composing approximately 1400 ml, and the balance comprised of the CSF and blood.

1.2. Observed CSF circulation

With each heart beat the volume oscillations of the blood flowing in and out of the rigid cranial vault cause the intracranial pressure to change in a time-periodic

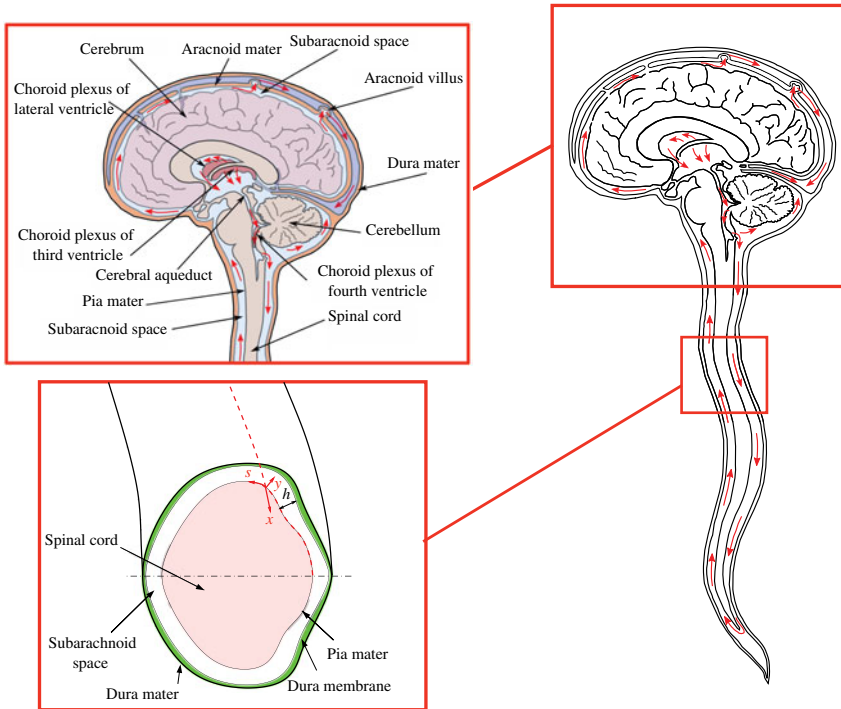


FIGURE 1. Schematic view of the anatomical features of the cranial cavity and the spinal canal, with indication of the curvilinear coordinates used in the analysis and of the bulk motion of the CSF in the spinal canal.

fashion with an approximate frequency of 1 Hz (Nitz *et al.* 1992; Bhadelia *et al.* 1997; Wagshul *et al.* 2006; Wagshul, Eide & Madsen 2011). This pressure fluctuation drives CSF periodically in and out of the compliant spinal canal (Loth, Yardimci & Alperin 2001), as needed to ensure that the sum of the volumes of the brain, CSF and the intracranial blood in the rigid cranial vault remains constant, following a straightforward conservation-of-mass principle known in the neurological community as the *Monro–Kellie doctrine* or hypothesis (Mokri 2001). The oscillating CSF flow in the spinal canal is accommodated by the displacement of the venous flow and the compression of the venous and fatty tissue in the epidural space that surrounds the dural sac, which, in turn, determines the effective elastic properties (compliance) of the spinal canal. In healthy adults, the tidal volume displaced in and out across the foramen magnum and into the cervical SAS during each cardiac cycle is $\Delta V \sim 1\text{--}2$ ml of CSF, corresponding to a very small fraction $\Delta V/V \sim 0.02\text{--}0.03$ of the total CSF volume inside the spinal canal. The associated stroke length $S = (\Delta V/V)L \sim 1$ cm is much smaller than the canal length L , resulting in oscillatory velocities $u \sim (\Delta V/V)\omega L$, where $\omega \simeq 2\pi$ rad s^{-1} is the relevant angular frequency. Magnetic resonance imaging (MRI) measurements have shown that the amplitude of these velocity fluctuations, on the order of a few centimetres per second near the foramen magnum, progressively decreases as one moves downwards along the length of the canal to reach zero value at its closed-end sacral region (Loth *et al.* 2001; Haughton & Mardal 2014). It has also been observed in many radiological studies that, in addition of the pulsatility of the arterial blood flow supplying the cranial vault, the respiration also produces

a modulation of the intracranial pressure, resulting in a smaller additional oscillation of the CSF in the spinal canal at a lower frequency (12–18 cycles per minute in adults) (Kao *et al.* 2008; Dreha-Kulaczewski *et al.* 2015). An overview of the current knowledge of pulsatile CSF motion can be found in the excellent review by Linninger *et al.* (2016).

In a seminal radionuclide scanning study, Di Chiro (1964) reported the upward migration of a labeled compound from the lumbar region of the spinal canal to the cranial vault. He also showed the rapid migration of the compound injected in the brain ventricles downwards into the spinal canal (Di Chiro 1966; Di Chiro *et al.* 1973). These findings, which were later corroborated by numerous radiological studies (Levy & Di Chiro 1990; Greitz & Hannerz 1996; Castillo 2016), gave partial support to the hypothesis that in addition to the observed biphasic periodic tides of ebb-and-flow described above, there must be an active circulation mechanism associated with transport of CSF produced by the choroid plexus into the spinal canal and returning a portion of it back to the cranial vault. Following Di Chiro's experiments there have been numerous radiological observations confirming that in adult humans the tracer injected in the lumbar region is detected moving upwards and reaching the basal cisterns of the cranial vault in 15–20 min (see, for example, the measurements of Greitz & Hannerz (1996)). These observations suggest that the characteristic velocities of the bulk motion of the CSF along the spinal canal are on the order of 1 cm min^{-1} . However, even though all current physiology text books depict this bulk recirculation (right-hand side sketch in figure 1), the existence of this slow-moving, bulk recirculation of the CSF in the spinal canal has continued to be the subject of dispute for the past 50 years. To date, more than 50 years after Di Chiro's radiological observations, there has been no comprehensive physical explanation for the mechanism responsible for the establishment of such a bulk motion. Understanding the mechanism that regulates this bulk motion of the CSF in the spinal canal has important implications in optimizing targeted drug delivery systems to the intrathecal space (injections in the CSF surrounding the spinal cord) (Lanz *et al.* 1986; Kroin *et al.* 1993; Penn 2003; Nelissen 2008; Hettiarachchi *et al.* 2011; Bottros & Christo 2014), and in improving the current understanding of the etiology of a large class of neurological conditions. This lack of a conclusive description of the physical mechanism responsible for the establishment of this slow recirculating flow in the spinal canal has motivated us to address the question of whether a periodic pressure pulsation in the rigid cranial vault could also induce a bulk recirculating flow along the length of the compliant spinal canal. In addition, the work is motivated by the important physiological question of how the characteristics of this bulk recirculating motion could be deregulated due to specific anatomical characteristics and other physiological parameters (i.e. changes in the compliance of the spinal canal due to ageing, increased blood pressure, cardiac rate, etc.).

1.3. Potential physical mechanisms

Several different physical processes have been postulated to account for the observed transport of radiological markers up and down the spinal canal. These include partial CSF reabsorption within the spinal canal and shear-enhanced diffusion. Although there is a lack of precise measurements, it appears that the spinal canal is not a major site of CSF reabsorption (Lorenzo, Page & Watters 2016). Nevertheless, reabsorption of CSF in the spinal canal will contribute to a downward transport but it cannot explain the upward migration of the traces towards the cranial vault

reported in numerous radiological studies. An alternative physical mechanism that may contribute to enhance the spreading of the tracers is shear-enhanced diffusion, often also referred to as Taylor diffusion (Taylor 1953; Watson 1983; Yasuda 1984), i.e. transverse diffusion coupled with the underlying radial shear of the oscillatory motion along the canal. However, because of the small diffusivity of the tracer, approximately $\kappa = 5 \times 10^{-10} \text{ m}^2 \text{ s}^{-1}$, the resulting enhanced diffusion velocities are much too small to explain the radiological observations. To see this, one may begin by writing $K = \kappa(1 + \mathcal{R})$ for the coefficient of enhanced diffusivity due to shear in an oscillatory flow in a pipe. This expression was obtained by Watson (1983) by assuming a linear gradient for the concentration of the passive scalar along the canal. For an oscillatory motion with stroke length S in a channel of characteristic width h_c , the relative increase \mathcal{R} is linearly proportional to $(S/h_c)^2$, with a proportionality factor of order unity that depends on the Schmidt number and on the frequency through the Womersley number $\alpha = h_c/(v/\omega)^{1/2}$ (Watson 1983; Elad, Halpern & Grotberg 1992). For the flow in the spinal canal $S \sim 1 \text{ cm}$ and $h_c \sim 1 \text{ mm}$, thereby yielding $\mathcal{R} \sim 100$ and $K \simeq 5 \times 10^{-8} \text{ m}^2 \text{ s}^{-1}$ for the effective diffusivity, with an associated enhanced diffusion velocity $K/L \sim 10^{-7} \text{ m s}^{-1}$ that is about three orders of magnitude smaller than the velocities inferred from the radiological observations. In view of these estimates, it can be concluded that, although shear-enhanced diffusion contributes to the transport rate of the tracer in the spinal canal, its role will be at most secondary due to the extremely small value of the tracer molecular diffusivity. Clearly, shear-enhanced diffusion may have a more pronounced effect on the transport of lighter molecules with higher diffusivities.

The previous considerations indicate that, contrary to some pervasive speculations in the neuroradiology literature (Greitz & Hannerz 1996), neither the reabsorption of CSF in the spinal canal nor the shear-enhanced diffusion of tracer markers are sufficiently efficient to produce the observed bulk motion that brings CSF downwards along the length of spinal canal and returns a portion of it back into the cranial vault with characteristic transport velocities on the order of 1 cm min^{-1} . A different mechanism is postulated below to be responsible for the observed steady circulatory flow of CSF in the spinal canal, namely, the steady-streaming motion resulting from the nonlinear cumulative effects of convective acceleration (Riley 2001), a phenomena that has already been shown to play an important role in many oscillatory flows, including respiratory and cardiovascular flows (Haselton & Scherer 1980, 1982; Grotberg 1984; Gaver & Grotberg 1986; Padmanabhan & Pedley 1987; Wang & Tarbell 1992; Grotberg & Jensen 2001; Sarkar & Jayaraman 2001; Waters & Guiot 2001; Muthu, Rathish Kumar & Chandra 2003; Jayaraman & Sarkar 2005; Ambarki *et al.* 2012, among many others).

In the following, we present a perturbation analysis of the flow–structure interaction problem responsible for the motion of CSF in the spinal canal. Our analysis takes advantage of the disparity of scales associated with the geometry of the subarachnoid space, which is modelled as a thin annular canal with slowly changing properties, and also of the limited compliance of the dura membrane bounding the CSF, whose small deformations are measured by a small asymptotic parameter ε , on the order of the ratio $\Delta V/V \ll 1$ of the tidal volume to the total CSF volume inside the spinal canal. At leading order in the limit $\varepsilon \ll 1$, we find an unsteady lubrication problem that generates an oscillatory flow with axial velocities that decrease monotonically along the length of the canal. More importantly, we show that the nonlinear terms associated with the convective acceleration, negligible at leading order, yield first-order corrections that include a steady-streaming component, corresponding to a bulk

recirculating motion of the CSF along the length of the canal, with characteristic velocities that are a factor ε smaller than those of the leading-order oscillatory flow. We applied our general asymptotic formulation to a canonical configuration consisting of a slender compliant cylindrical pipe with a coaxial cylindrical inclusion that is closed at the distal end and subjected to small periodic pressure pulsations at its open entrance. The results of the analysis of this idealized geometry of the spinal canal are shown to be in agreement not only with experimental measurements conducted in a *in-vitro* model but also to be consistent with radiological measurements in human adults.

2. CSF motion in the spinal canal

2.1. Geometrical considerations

In analyzing the motion of CSF, the spinal SAS will be modelled as a thin annular gap of length L whose cross-section varies slowly between the base of the cranial cavity and the lumbar region. The orthogonal curvilinear coordinates (x, y, s) shown in the lower inset of figure 1 will be employed in the analysis, with x denoting the distance from the canal entrance measured along the spinal cord, y being the normal distance to the pia mater (the inner surface), and s being the distance measured from the symmetry plane around the surface of the pia mater normalized with the spinal-cord perimeter $\ell(x)$. The values of the coordinates are in the ranges $0 \leq x \leq L$, $0 \leq y \leq h(x, s, t)$ and $0 \leq s \leq 1$, where $h(x, s, t)$ is the canal width. Characteristic values of h and ℓ are $h_c \sim 0.1$ cm and $\ell_c \sim 2$ cm, respectively, while $L \sim 60\text{--}80$ cm, resulting in the inequalities

$$L \gg \ell_c \gg h_c, \quad (2.1)$$

which are to be used in simplifying the description, as shown below.

The conservation equation in terms of the curvilinear coordinates (x, y, s) can be written following the general expressions given in Batchelor (2000). In particular, when the condition (2.1) is accounted for, the continuity equation takes the simplified form

$$\frac{1}{\ell} \frac{\partial}{\partial x}(\ell u) + \frac{\partial v}{\partial y} + \frac{1}{\ell} \frac{\partial w}{\partial s} = 0, \quad (2.2)$$

where u , v and w are the velocity components in the x , y and s directions, respectively. A straightforward order-of-magnitude balance of (2.2) provides

$$\frac{u_c}{L} \sim \frac{v_c}{h_c} \sim \frac{w_c}{\ell_c} \quad (2.3)$$

relating the characteristic values u_c , v_c and w_c of the three velocity components. These scalings correspond to streamlines aligned in the x direction (i.e. $u \sim (L/\ell_c)w \gg w$) with an accompanying slow transverse motion occurring predominantly in the azimuthal direction with $w \sim (\ell_c/h_c)v \gg v$, with v being the smallest velocity component.

In the resulting slender flow, the characteristic values of the spatial pressure differences needed to establish the motion in the x , y and s directions are given by $\delta_x p = \rho \omega u_c L$, $\delta_y p = \rho \omega v_c h_c$ and $\delta_s p = \rho \omega w_c \ell_c$, respectively, as follows from a balance between the pressure gradient and the local acceleration. These values are very different in magnitude, as can be seen by using (2.3), yielding

$$\frac{\delta_x p}{L^2} \sim \frac{\delta_y p}{h_c^2} \sim \frac{\delta_s p}{\ell_c^2}. \quad (2.4)$$

The scalings (2.4) can be taken into account when describing the variations of the pressure p from the entrance value p_c . Neglecting the small contribution to the pressure fluctuation associated with breathing, the value of p_c can be written as

$$p_c(t) = p_o + (\Delta p)_c \Pi(\omega t), \tag{2.5}$$

where p_o is the time-averaged intracranial pressure, $(\Delta p)_c$ is the amplitude of the cranial pressure pulse, and $\Pi(\omega t)$ is a dimensionless periodic function with angular frequency $\omega \simeq 2\pi$ Hz, associated with the cardiac cycle. According to (2.4), with small errors of order $(h_c/\ell_c)^2$ one may neglect the pressure variations in the y direction when writing

$$p - p_c(t) = p'(x, t) + \tilde{p}(x, s, t) \tag{2.6}$$

for the pressure variation along the canal, with $p'(x, t)$ denoting the value of the pressure difference $p - p_c(t)$ along the curve $s = y = 0$. The term $\tilde{p} \sim (\ell_c/L)^2 p' \ll p'$, measuring the small pressure differences around the canal, must be included to describe the azimuthal motion.

2.2. Constitutive equation and elastic parameters

The dura membrane deforms in response to the local pressure variations to accommodate the inflow and outflow of CSF into the canal, so that the canal width $h(x, s, t)$ is a function of time that must be determined as part of the solution. The deformations $h' = h - h_o$ are to be defined relative to the unperturbed width distribution $h_o(x, s)$ describing the geometry of the canal when the pressure everywhere is uniform and equal to $p = p_o$, with $A_o(x) = \ell(x) \int_0^1 h_o(x, s) ds$ representing the unperturbed value of the cross-sectional area. Since the tidal volume is small compared with the total volume of CSF, the associated changes in the shape of the canal must satisfy

$$(h - h_o)/h_o \sim \Delta V/V \ll 1. \tag{2.7}$$

The description of the coupling between the fluid motion and the deformation of the dura membrane in general amounts to a very complicated fluid–structure interaction problem. A simplified solution is pursued below on the basis of the presumed linear relation $h' \propto (p - p_o)$. The description accounts also for the fact that the pressure at a given canal section is nearly uniform, with small relative variations, represented in (2.6) by the term \tilde{p} , that are of order $(\ell_c/L)^2$. If these are neglected, then one may write $p - p_o \simeq (\Delta p)_c \Pi(\omega t) + p'(x, t)$, which, together with the additional assumption that the elastic properties of the dura membrane are independent of s , yields the simplified constitutive equation

$$\frac{p - p_o}{E_e} = \frac{h'(x, t)}{A_o/\ell}. \tag{2.8}$$

In writing (2.8) we have chosen to scale the deformation with the average canal width $A_o/\ell \sim h_c$ and include for generality an effective elastic modulus $E_e(x)$, the latter embodying the overall effect of different microanatomical features such as the distribution of veins and fatty epidural tissue in the dura membrane. Variations of the elastic properties of the dura membrane at a given section, not considered in the present development, could be incorporated in the model by allowing the effective elastic modulus E_e to be a function of s , resulting in the local deformation h' being also a function of s , according to (2.8).

According to (2.7) and (2.8) the value of E_e must be much larger than $p - p_o$, so that the resulting deformations remain small according to $(p - p_o)/E_e \sim \Delta V/V \ll 1$.

The ratio of the characteristic value of the local pressure variation $p - p_o \sim (\Delta p)_c$ to the characteristic value E_c of E_e defines the small parameter

$$\varepsilon = \frac{(\Delta p)_c}{E_c} \sim \frac{\Delta V}{V} \ll 1, \tag{2.9}$$

to be used in the following description as a measure of the compliance.

The effective elastic modulus E_e determines the wave speed $(E_e/\rho)^{1/2}$ of the resulting pulsatile motion along the canal. Noninvasive measurements (Kalata *et al.* 2009) using MRI have shown this wave speed to be on the order of a few metres per second, giving associated wavelengths $(E_c/\rho)^{1/2}/\omega$ that are comparable to the canal length L . Correspondingly, the ratio

$$k = \frac{L}{(E_c/\rho)^{1/2}/\omega} \sim 1, \tag{2.10}$$

defines a dimensionless elastic wavenumber of order unity, another important parameter in the description below.

2.3. Simplified conservation equations

We give below the equations that determine the velocity, whose x , y and s components, $u(x, y, s, t)$, $v(x, y, s, t)$ and $w(x, y, s, t)$, must satisfy the non-slip boundary conditions $u = v = w = 0$ at $y = 0$ and $u = v - \partial h'/\partial t = w = 0$ at $y = h(x, s, t)$. The problem also involves the displacement $h'(x, t) = h - h_o(x, s)$, and the pressure field, described in terms of the functions $p'(x, t)$ and $\bar{p}(x, s, t)$.

The computation of u and w requires consideration of the x and s components of the momentum equation, which can be written for the curvilinear coordinates defined above by neglecting terms of order $(\ell_c/L)^2$ or $(h_c/\ell_c)^2$ (or smaller) to give

$$\frac{\partial u}{\partial t} + u \frac{\partial u}{\partial x} + v \frac{\partial u}{\partial y} + \frac{w}{\ell} \frac{\partial u}{\partial s} = -\frac{1}{\rho} \frac{\partial p'}{\partial x} + \nu \frac{\partial^2 u}{\partial y^2}, \tag{2.11}$$

$$\frac{\partial w}{\partial t} + \frac{u}{\ell} \frac{\partial}{\partial x}(\ell w) + v \frac{\partial w}{\partial y} + \frac{w}{\ell} \frac{\partial w}{\partial s} = -\frac{1}{\rho \ell} \frac{\partial \bar{p}}{\partial s} + \nu \frac{\partial^2 w}{\partial y^2}, \tag{2.12}$$

whereas the y component of the momentum equation, which would be needed to compute the small spatial pressure differences $\delta_y p$, can be omitted in the slender-flow approximation at the order considered here. At the same level of approximation, the viscous terms have been simplified in (2.11) and (2.12) by discarding the terms involving $\partial^2/\partial x^2$ and $\partial^2/\partial s^2$, which are smaller than the terms that have been retained by a factor $(h_c/L)^2$ and $(h_c/\ell_c)^2$, respectively.

The transverse velocity component v can be evaluated in terms of u and w from

$$v + \frac{1}{\ell} \frac{\partial}{\partial x} \left(\ell \int_0^y u \, d\tilde{y} \right) + \frac{1}{\ell} \frac{\partial}{\partial s} \left(\int_0^y w \, d\tilde{y} \right) = 0, \tag{2.13}$$

involving the dummy integration variable \tilde{y} . The above equation is obtained by integrating the continuity equation (2.2) in the y direction with the condition $u = v = w = 0$ at $y = 0$. Evaluating the above equation at $y = h$ gives

$$\ell \frac{\partial h'}{\partial t} + \frac{\partial}{\partial x} \left(\ell \int_0^h u \, dy \right) + \frac{\partial}{\partial s} \left(\int_0^h w \, dy \right) = 0, \tag{2.14}$$

which is the corresponding Reynolds lubrication equation for the problem.

Further integrations of the continuity equation also become useful in the development, which assumes that the spinal canal is symmetric, such that $h_o(x, s) = h_o(x, 1 - s)$, resulting in the conditions $\int_0^h w dy = 0$ at $s = 0$ and at $s = 1/2$. Multiplying (2.14) by ds and integrating between 0 and s provides

$$\ell \frac{\partial h'}{\partial t} s + \frac{\partial}{\partial x} \left[\ell \int_0^s \left(\int_0^h u dy \right) ds \right] + \int_0^h w dy = 0 \tag{2.15}$$

after using the symmetry condition $\int_0^h w dy = 0$ at $s = 0$, whereas the condition $\int_0^h w dy = 0$ at $s = 1/2$ (or $s = 1$) yields

$$\ell \frac{\partial h'}{\partial t} = - \frac{\partial}{\partial x} \left[\ell \int_0^1 \left(\int_0^h u dy \right) ds \right]. \tag{2.16}$$

The displacement h' is related to the local pressure $p - p_o \simeq (\Delta p)_c \Pi + p'$ by the constitutive equation (2.8), which can be differentiated with respect to time to give

$$\ell \frac{\partial h'}{\partial t} = \frac{A_o}{E_e} \left((\Delta p)_c \frac{d\Pi}{dt} + \frac{\partial p'}{\partial t} \right). \tag{2.17}$$

The additional equation

$$- \frac{\partial}{\partial x} \left[\ell \int_0^1 \left(\int_0^h u dy \right) ds \right] = \frac{A_o}{E_e} \left((\Delta p)_c \frac{d\Pi}{dt} + \frac{\partial p'}{\partial t} \right) \tag{2.18}$$

obtained by combining (2.16) and (2.17) will be found below to be useful in computing p' as a function of the streamwise velocity u .

2.4. Dimensionless formulation

An order-of-magnitude analysis provides the characteristic scales for the problem. The development begins by using (2.18) with $(\Delta p)_c/E_e \sim \varepsilon$ to provide $u_c = \varepsilon L \omega$ as an estimate for the characteristic value of u , on the order of a few centimetres per second, as can be seen by using $\varepsilon \sim \Delta V/V \sim 0.02$, $\omega = 2\pi$ and $L \sim 60\text{--}80$ cm. The characteristic values $w_c = \varepsilon \ell_c \omega$ and $v_c = \varepsilon h_c \omega$ follow from (2.3). The spatial pressure changes needed to move the fluid can be estimated from the balance between the local acceleration and the pressure gradient in (2.11) and (2.12) to give $\delta_x p = \rho \varepsilon (\omega L)^2$ and $\delta_s p = \rho \varepsilon (\omega \ell_c)^2$. Additional order-of-magnitude balances in these two equations reveal that the convective acceleration is smaller than the local acceleration by a factor ε , whereas the comparison between the local acceleration and the viscous force yields

$$\frac{O(\partial u / \partial t)}{O(v \partial^2 u / \partial y^2)} \sim \frac{O(\partial w / \partial t)}{O(v \partial^2 w / \partial y^2)} \sim \alpha^2 = \frac{\omega h_c^2}{\nu}, \tag{2.19}$$

where

$$\alpha = h_c / (v / \omega)^{1/2} \tag{2.20}$$

is the Womersley number of the flow (the reciprocal of the square root of the relevant Stokes number $\nu / (h_c^2 \omega)$), typically of order unity, as can be seen by using $h_c \sim 10^{-3}$ m, $\omega = 2\pi \text{ s}^{-1}$ and $\nu \sim 10^{-6} \text{ m}^2 \text{ s}^{-1}$.

The relative scalings discussed above become clear when writing the above problem in dimensionless form by introduction of the dimensionless variables $u^* = u/u_c$, $v^* = v/v_c$, $w^* = w/w_c$, $p'^* = p'/\delta_x p$, $\tilde{p}^* = \tilde{p}/\delta_s p$, $t^* = \omega t$, $x^* = x/L$, $\ell^* = \ell/\ell_c$, $h_o^* = h_o/h_c$, $h^* = h/h_c$, $h'^* = (h - h_o)/(\varepsilon h_c)$, $A_o^* = A_o/(\ell_c h_c)$ and $E_e^* = E_e/E_c$. In addition, to facilitate the description of the temporal changes of the canal width it is convenient to scale the distance y with the local width $h(x, s, t)$ through the normalized coordinate $\eta = y/h(x, s, t)$. In what follows, the asterisks used to denote dimensionless variables will be dropped to simplify the notation.

Since we have a total of six unknowns (i.e. u, v, w, p', \tilde{p} and h' , with $h = h_o + \varepsilon h'$) the description requires in principle six equations, which are given below in dimensionless form. We begin by writing (2.11) and (2.12) as

$$\frac{\partial u}{\partial t} + \varepsilon F_x = -\frac{\partial p'}{\partial x} + \frac{1}{h^2 \alpha^2} \frac{\partial^2 u}{\partial \eta^2}, \tag{2.21}$$

$$\frac{\partial w}{\partial t} + \varepsilon F_s = -\frac{1}{\ell} \frac{\partial \tilde{p}}{\partial s} + \frac{1}{h^2 \alpha^2} \frac{\partial^2 w}{\partial \eta^2}, \tag{2.22}$$

where

$$F_x = \frac{1}{\ell} \frac{\partial}{\partial x} (\ell u^2) + \frac{1}{h} \frac{\partial}{\partial \eta} (uv) + \frac{1}{\ell} \frac{\partial}{\partial s} (uw) - \frac{\partial h'}{\partial t} \frac{\eta}{h} \frac{\partial u}{\partial \eta} - \frac{\partial h}{\partial x} \frac{\eta}{h} \frac{\partial}{\partial \eta} (u^2) - \frac{1}{\ell} \frac{\partial h}{\partial s} \frac{\eta}{h} \frac{\partial}{\partial \eta} (uw) \tag{2.23}$$

and

$$F_s = \frac{\partial}{\partial x} (uw) + 2 \frac{uw}{\ell} \frac{\partial \ell}{\partial x} + \frac{1}{h} \frac{\partial}{\partial \eta} (vw) + \frac{1}{\ell} \frac{\partial}{\partial s} (w^2) - \frac{\partial h'}{\partial t} \frac{\eta}{h} \frac{\partial w}{\partial \eta} - \frac{\partial h}{\partial x} \frac{\eta}{h} \frac{\partial}{\partial \eta} (uw) - \frac{1}{\ell} \frac{\partial h}{\partial s} \frac{\eta}{h} \frac{\partial}{\partial \eta} (w^2) \tag{2.24}$$

represent the convective terms, including the apparent convection associated with $\partial h'/\partial t$. The streamwise pressure variation p' is related to the volume flux by (2.18), which can be written as

$$\frac{A_o}{E_e} \left(\frac{d\Pi}{dt} + k^2 \frac{\partial p'}{\partial t} \right) = -\frac{\partial}{\partial x} \left[\ell \int_0^1 h \left(\int_0^1 u d\eta \right) ds \right], \tag{2.25}$$

whereas the deformation h' satisfies

$$\ell \frac{\partial h'}{\partial t} = \frac{A_o}{E_e} \left(\frac{d\Pi}{dt} + k^2 \frac{\partial p'}{\partial t} \right), \tag{2.26}$$

as obtained from (2.17). The transverse velocity component v can be evaluated from (2.13) in terms of u and w to yield

$$v = -\frac{1}{\ell} \frac{\partial}{\partial x} \left(\ell h \int_0^\eta u d\eta \right) - \frac{1}{\ell} \frac{\partial}{\partial s} \left(h \int_0^\eta w d\eta \right) + \frac{\partial h}{\partial x} \eta u + \frac{1}{\ell} \frac{\partial h}{\partial s} \eta w. \tag{2.27}$$

Finally, the integral continuity balance

$$h \int_0^1 w d\eta = \frac{\partial}{\partial x} \left[s \ell \int_0^1 h \left(\int_0^1 u d\eta \right) ds - \ell \int_0^s h \left(\int_0^1 u d\eta \right) ds \right], \tag{2.28}$$

obtained by combining (2.15) and (2.16), will be useful in computing the azimuthal variation of the pressure \tilde{p} .

The velocity components u and w must satisfy the non-slip boundary conditions $u = w = 0$ at $\eta = 0, 1$. At the canal entrance the pressure is $p = p_c(t)$, resulting in the condition

$$p' = 0 \quad \text{at } x = 0. \tag{2.29}$$

Also, the streamwise volume flux must vanish at the closed end of the canal, so that

$$\int_0^1 h \left(\int_0^1 u \, d\eta \right) ds = 0 \quad \text{at } x = 1. \tag{2.30}$$

Besides the Womersley number α defined in (2.20) and the dimensionless elastic wavenumber k defined in (2.10), both of order unity, the above problem depends on the elasticity parameter $\varepsilon \ll 1$, identified earlier in (2.9), with $\alpha^2 \varepsilon \ll 1$ representing the relevant Reynolds number for the flow. As can be seen in (2.21) and (2.22), at leading order in the limit $\varepsilon \ll 1$ the flow in the thin canal corresponds to an oscillatory lubrication problem, where the motion is determined by a balance between the local acceleration, the pressure gradient, and the viscous forces associated with the transverse velocity derivatives.

3. Leading-order oscillatory flow

The solution can be obtained using perturbation analysis by introducing expansions for the different flow variables of the form $u = u_0 + \varepsilon u_1 + \dots$, $v = v_0 + \varepsilon v_1 + \dots$, $w = w_0 + \varepsilon w_1 + \dots$, $p' = p'_0 + \varepsilon p'_1 + \dots$ and $\tilde{p} = \tilde{p}_0 + \varepsilon \tilde{p}_1 + \dots$, together with the expansion $h'(x, t) = (h - h_o)/\varepsilon = h'_0 + \varepsilon h'_1 + \dots$ for the deformation of the canal. It will be seen that the leading-order solution is purely oscillatory, whereas the corrections include a steady component corresponding to the steady bulk-flow motion, with characteristic velocities of order $\varepsilon u_c = \varepsilon^2 \omega L$ (i.e. a few centimetres per minute, in agreement with the observed transport rates in the spinal canal).

At leading order, (2.21), (2.22), and (2.25)–(2.28) reduce to the linear equations

$$\frac{\partial u_0}{\partial t} = -\frac{\partial p'_0}{\partial x} + \frac{1}{h_o^2 \alpha^2} \frac{\partial^2 u_0}{\partial \eta^2}, \tag{3.1}$$

$$\frac{\partial w_0}{\partial t} = -\frac{1}{\ell} \frac{\partial \tilde{p}_0}{\partial s} + \frac{1}{h_o^2 \alpha^2} \frac{\partial^2 w_0}{\partial \eta^2}, \tag{3.2}$$

$$\frac{A_o}{E_e} \left(\frac{d\Pi}{dt} + k^2 \frac{\partial p'_0}{\partial t} \right) = -\frac{\partial}{\partial x} \left[\ell \int_0^1 h_o \left(\int_0^1 u_0 \, d\eta \right) ds \right], \tag{3.3}$$

$$\ell \frac{\partial h'_0}{\partial t} = \frac{A_o}{E_e} \left(\frac{d\Pi}{dt} + k^2 \frac{\partial p'_0}{\partial t} \right), \tag{3.4}$$

$$v_0 = -\frac{1}{\ell} \frac{\partial}{\partial x} \left(\ell h_o \int_0^\eta u_0 \, d\eta \right) - \frac{1}{\ell} \frac{\partial}{\partial s} \left(h_o \int_0^\eta w_0 \, d\eta \right) + \frac{\partial h_o}{\partial x} \eta u_0 + \frac{1}{\ell} \frac{\partial h_o}{\partial s} \eta w_0, \tag{3.5}$$

$$h_o \int_0^1 w_0 \, d\eta = \frac{\partial}{\partial x} \left[s \ell \int_0^1 h_o \left(\int_0^1 u_0 \, d\eta \right) ds - \ell \int_0^s h_o \left(\int_0^1 u_0 \, d\eta \right) ds \right]. \tag{3.6}$$

The solution depends on the shape of the canal through the known functions $h_o(x, s)$ and $\ell(x)$, on its elastic properties through the function $E_e(x)$, and on the temporal variation of the intracranial pressure, defined by the periodic function $\Pi(t)$.

An analytic solution can be obtained for the case of a harmonic intracranial pressure $\Pi(t) = \cos t$ by introducing the complex functions $U(x, \eta, s)$, $V(x, \eta, s)$, $W(x, \eta, s)$, $P'(x)$, $\tilde{P}(x, s)$ and $H'(x)$ defined such that

$$\left. \begin{aligned} u_0 &= \text{Re}(ie^{it}U), & v_0 &= \text{Re}(ie^{it}V), & w_0 &= \text{Re}(ie^{it}W), \\ p'_0 &= \text{Re}(e^{it}P'), & \tilde{p}_0 &= \text{Re}(e^{it}\tilde{P}), & \text{and } h'_0 &= \text{Re}(e^{it}H'). \end{aligned} \right\} \quad (3.7)$$

The functions

$$U = \frac{dP'}{dx}G \quad \text{and} \quad W = \frac{1}{\ell} \frac{\partial \tilde{P}}{\partial s}G, \quad (3.8a,b)$$

with

$$G(x, \eta, s) = 1 - \frac{\cosh \left[\frac{\alpha h_o}{2} \frac{1+i}{\sqrt{2}} (2\eta - 1) \right]}{\cosh \left[\frac{\alpha h_o}{2} \frac{1+i}{\sqrt{2}} \right]} \quad (3.9)$$

are determined by integration of

$$\frac{i}{h_o^2 \alpha^2} \frac{\partial^2 U}{\partial \eta^2} + U = \frac{dP'}{dx}; \quad U = 0 \text{ at } \eta = (0, 1) \quad (3.10)$$

and

$$\frac{i}{h_o^2 \alpha^2} \frac{\partial^2 W}{\partial \eta^2} + W = \frac{1}{\ell} \frac{\partial \tilde{P}}{\partial s}; \quad W = 0 \text{ at } \eta = (0, 1), \quad (3.11)$$

derived from (3.1) and (3.2), respectively. On the other hand, the function G can be integrated to give

$$\int_0^\eta G d\eta = \eta - \frac{1-i}{\sqrt{2}\alpha h_o} \frac{\sinh \left[\frac{\alpha h_o}{2} \frac{1+i}{\sqrt{2}} (2\eta - 1) \right] + \sinh \left[\frac{\alpha h_o}{2} \frac{1+i}{\sqrt{2}} \right]}{\cosh \left[\frac{\alpha h_o}{2} \frac{1+i}{\sqrt{2}} \right]} \quad (3.12)$$

which can be used in (3.5) to provide

$$\begin{aligned} V &= -\frac{1}{\ell} \frac{\partial}{\partial x} \left(\ell h_o \frac{dP'}{dx} \int_0^\eta G d\eta \right) - \frac{1}{\ell} \frac{\partial}{\partial s} \left(\frac{h_o}{\ell} \frac{\partial \tilde{P}}{\partial s} \int_0^\eta G d\eta \right) \\ &\quad + \frac{\partial h_o}{\partial x} \frac{dP'}{dx} \eta G + \frac{1}{\ell} \frac{\partial h_o}{\partial s} \frac{1}{\ell} \frac{\partial \tilde{P}}{\partial s} \eta G \end{aligned} \quad (3.13)$$

for the velocity component normal to the surface.

The expressions given in (3.8) and (3.13) for the velocity components involve the pressure gradients dP'/dx and $\partial \tilde{P}/\partial s$, to be obtained for given values of $h_o(x, s)$ and $\ell(x)$ with use made of (3.3) and (3.6). In the computation it is convenient to introduce the functions

$$q(x, s) = h_o \int_0^1 G d\eta = h_o - \frac{\sqrt{2}(1-i)}{\alpha} \tanh \left(\frac{\alpha h_o}{2} \frac{1+i}{\sqrt{2}} \right) \quad (3.14)$$

and

$$Q(x) = \ell \int_0^1 q \, ds = \ell \int_0^1 \left[h_o - \frac{\sqrt{2}(1-i)}{\alpha} \tanh\left(\frac{\alpha h_o}{2} \frac{1+i}{\sqrt{2}}\right) \right] ds, \tag{3.15}$$

which define the volume fluxes

$$h_o \int_0^1 u_0 \, d\eta = \text{Re}\left(ie^{it} \frac{dP'}{dx} q\right), \quad h_o \int_0^1 w_0 \, d\eta = \text{Re}\left(\frac{ie^{it}}{\ell} \frac{\partial \tilde{P}}{\partial s} q\right), \tag{3.16a,b}$$

and

$$\ell \int_0^1 h_o \left(\int_0^1 u_0 \, d\eta \right) ds = \text{Re}\left(ie^{it} \frac{dP'}{dx} Q\right) \tag{3.17}$$

appearing in (3.3) and (3.6). In particular, equation (3.3) can be used, together with the boundary conditions (2.29) and (2.30), to write the boundary-value problem

$$\frac{E_e(x)}{A_o(x)} \frac{d}{dx} \left[Q(x) \frac{dP'}{dx} \right] + k^2 P' + 1 = 0; \quad P' = 0 \text{ at } x = 0 \text{ and } \frac{dP'}{dx} = 0 \text{ at } x = 1 \tag{3.18}$$

for the function $P'(x)$, which can be used in (3.4) to give

$$H' = \frac{A_o}{\ell E_e} (k^2 P' + 1) \tag{3.19}$$

for the deformation of the outer surface and in (3.6) to yield

$$\frac{1}{\ell} \frac{\partial \tilde{P}}{\partial s} = \frac{1}{q} \frac{\partial}{\partial x} \left[\frac{dP'}{dx} \left(sQ - \ell \int_0^s q \, ds \right) \right] \tag{3.20}$$

for the azimuthal pressure gradient.

In general, numerical integration is needed to solve the boundary-value problem (3.18). The closed-form solution

$$P' = \frac{1}{k^2} \left\{ \frac{\cos[k(1-x)/\sqrt{Q}]}{\cos(k/\sqrt{Q})} - 1 \right\} \tag{3.21}$$

is obtained for uniform elastic modulus $E_e = 1$ when the cross-section has constant shape (i.e. $h_o = h_o(s)$ and $\ell = A_o = 1$), so that $Q = \text{const}$.

For a given canal geometry, defined by $h_o(x, s)$, $\ell(x)$ and $A_o(x) = \ell(x) \int_0^1 h_o \, ds$, with given elastic properties, defined by $E_e(x)$, the determination of the oscillatory motion begins by employing (3.15) to compute $Q(x)$. The resulting function is to be used in (3.18) when computing $P'(x)$, which in turn provides through (3.19) the deformation H' . The associated gradient dP'/dx can be used in (3.8) to compute U and in (3.20) to evaluate $\partial \tilde{P}/\partial s$, which allows us to determine W and V from (3.8) and (3.13). Finally, the complex functions U , V , W , P' and H' can be used in (3.7) to provide u_0 , v_0 , w_0 , p'_0 and h'_0 .

4. Steady-streaming motion

Because of nonlinear interactions, associated with the convective terms and with the temporal and spatial variations of the canal width, the first-order corrections to the flow contain a steady component, additional to the oscillatory component.

The computation of this steady-streaming flow begins by collecting terms of order ε in (2.21) and (2.22). Taking the time average $\langle \cdot \rangle = (1/2\pi) \int_0^{2\pi} \cdot dt$ of the resulting equations yields

$$\mathcal{F}_x = -\frac{\partial \langle p'_1 \rangle}{\partial x} + \frac{1}{h_o^2 \alpha^2} \frac{\partial^2 \langle u_1 \rangle}{\partial \eta^2}, \tag{4.1}$$

$$\mathcal{F}_s = -\frac{1}{\ell} \frac{\partial \langle \tilde{p}_1 \rangle}{\partial s} + \frac{1}{h_o^2 \alpha^2} \frac{\partial^2 \langle w_1 \rangle}{\partial \eta^2}, \tag{4.2}$$

where

$$\begin{aligned} \mathcal{F}_x = & \frac{1}{\ell} \frac{\partial}{\partial x} (\ell \langle u_0^2 \rangle) + \frac{1}{h_o} \frac{\partial}{\partial \eta} \langle u_0 v_0 \rangle + \frac{1}{\ell} \frac{\partial}{\partial s} \langle u_0 w_0 \rangle \\ & - \frac{\eta}{h_o} \frac{\partial}{\partial \eta} \left\langle \frac{\partial h'_0}{\partial t} u_0 \right\rangle - \frac{\partial h_o}{\partial x} \frac{\eta}{h_o} \frac{\partial}{\partial \eta} \langle u_0^2 \rangle - \frac{1}{\ell} \frac{\partial h_o}{\partial s} \frac{\eta}{h_o} \frac{\partial}{\partial \eta} \langle u_0 w_0 \rangle + \frac{2}{h_o^3 \alpha^2} \frac{\partial^2}{\partial \eta^2} \langle h'_0 u_0 \rangle \end{aligned} \tag{4.3}$$

and

$$\begin{aligned} \mathcal{F}_s = & \frac{\partial}{\partial x} \langle u_0 w_0 \rangle + 2 \frac{\langle u_0 w_0 \rangle}{\ell} \frac{\partial \ell}{\partial x} + \frac{1}{h_o} \frac{\partial}{\partial \eta} \langle v_0 w_0 \rangle + \frac{1}{\ell} \frac{\partial}{\partial s} \langle w_0^2 \rangle - \frac{\eta}{h_o} \frac{\partial}{\partial \eta} \left\langle \frac{\partial h'_0}{\partial t} w_0 \right\rangle \\ & - \frac{\partial h_o}{\partial x} \frac{\eta}{h_o} \frac{\partial}{\partial \eta} \langle u_0 w_0 \rangle - \frac{1}{\ell} \frac{\partial h_o}{\partial s} \frac{\eta}{h_o} \frac{\partial}{\partial \eta} \langle w_0^2 \rangle + \frac{2}{h_o^3 \alpha^2} \frac{\partial^2}{\partial \eta^2} \langle h'_0 w_0 \rangle \end{aligned} \tag{4.4}$$

can be evaluated in terms of the leading-order solution. The steady-streaming velocities must satisfy $\langle u_1 \rangle = \langle w_1 \rangle = 0$ at $\eta = 0, 1$.

The functions \mathcal{F}_x and \mathcal{F}_s drive the steady-streaming motion, in that, if they were zero, the solution to (4.1) and (4.2) would reduce to $\langle u_1 \rangle = \langle w_1 \rangle = 0$. Besides the well-known contributions arising from the time average of the nonlinear convective acceleration, present in any steady-streaming phenomenon, additional terms appear in (4.3) and (4.4) due to the deformation of the canal (i.e. the terms involving h'_0 and $\partial h'_0 / \partial t$). Similar contributions have been identified earlier in studies of steady-streaming in elastic tubes (Wang & Tarbell 1992). In principle, all terms in (4.3) and (4.4) can contribute significantly to the motion depending on the flow conditions and on the specific geometrical features of the canal. For the specific model problem considered below in § 5 the canal width h_o and its perimeter ℓ are selected to be independent of x , so that the terms involving $\partial h_o / \partial x$ and $\partial \ell / \partial x$ are identically zero. All other terms were found to be significant, with their relative importance varying along the canal.

Integrating (4.1) and (4.2) subject to $\langle u_1 \rangle = \langle w_1 \rangle = 0$ at $\eta = 0, 1$ yields

$$\frac{\langle u_1 \rangle}{h_o^2 \alpha^2} = -\frac{d \langle p'_1 \rangle}{dx} \frac{(1 - \eta) \eta}{2} + \eta \int_0^\eta \mathcal{F}_x d\bar{\eta} - \int_0^\eta \mathcal{F}_x \bar{\eta} d\bar{\eta} - \eta \int_0^1 \mathcal{F}_x (1 - \eta) d\eta \tag{4.5}$$

and

$$\frac{\langle w_1 \rangle}{h_o^2 \alpha^2} = -\frac{1}{\ell} \frac{\partial \langle \tilde{p}_1 \rangle}{\partial s} \frac{(1 - \eta) \eta}{2} + \eta \int_0^\eta \mathcal{F}_s d\bar{\eta} - \int_0^\eta \mathcal{F}_s \bar{\eta} d\bar{\eta} - \eta \int_0^1 \mathcal{F}_s (1 - \eta) d\eta. \tag{4.6}$$

The average streamwise pressure gradient $d\langle p'_1 \rangle/dx$, which completes the determination of $\langle u_1 \rangle$, is a function of x that can be computed by imposing the condition

$$\int_0^1 h_o \left(\int_0^1 \langle u_1 \rangle d\eta \right) ds + \int_0^1 \int_0^1 \langle h'_o u_o \rangle d\eta ds = 0 \tag{4.7}$$

obtained at this order from the time average of (2.25) with use made of (2.30). Similarly, the azimuthal pressure gradient $\partial \langle \tilde{p}_1 \rangle / \partial s$ appearing in (4.6) can be determined from the condition

$$\frac{\partial}{\partial x} \left[\ell \int_0^s \left(\int_0^1 (h_o \langle u_1 \rangle + \langle h'_o u_o \rangle) d\eta \right) ds \right] + h_o \int_0^1 \langle w_1 \rangle d\eta + \int_0^1 \langle h'_o w_o \rangle d\eta = 0 \tag{4.8}$$

obtained at this order from the time average of (2.28).

5. Selected results for a model problem

A simple geometrical model will be used to illustrate some of the salient features of the flow. Specifically, we consider the flow in the annular canal bounded between two cylindrical surfaces of radii R and $R + h_c$ whose axes are separated by a distance βh_c , with $h_c \ll R$ and $0 \leq \beta < 1$ (see the schematic view shown in figure 4(a), to be discussed later). Using h_c and $\ell_c = 2\pi R$ as characteristic scales leads to the dimensionless geometrical functions $h_o = 1 - \beta \cos(2\pi s)$, $\ell = 1$ and $A_o = 1$, resulting in a constant value of the reduced volume flux Q , as can be computed from (3.15). Furthermore, a uniform elastic modulus $E_e = 1$ is assumed, so that the complex function $P'(x)$ for the axial pressure variation reduces to (3.21). Similar simple models involving coaxial flexible tubes have been considered in analyses of pressure-wave propagation in the spinal canal (Berkouk, Carpenter & Lucey 2003; Carpenter, Berkouk & Lucey 2003).

Besides the geometry, which is defined by the eccentricity parameter β for the simplified problem, the solution depends on the values of k and α , both assumed to be of order unity, as corresponds to the scales characterizing the flow in the spinal canal. As can be seen from the definitions given in (2.10) and (2.20), the specific values $k = 0.5$ and $\alpha = 3$ employed in the computations used for figures 3 through 5 correspond to a canal with width $h_c \sim 1$ mm and elastic wave speed $(E_c/\rho)^{1/2} \sim 10$ m s⁻¹.

The leading-order oscillatory flow is investigated in figures 2 and 3. In particular, figure 2 represents the variation of

$$\left| Q \frac{dP'}{dx} \right| = \left| \frac{\sqrt{Q} \sin[k(1-x)/\sqrt{Q}]}{k \cos(k/\sqrt{Q})} \right|, \tag{5.1}$$

which is the amplitude of the tidal volume flux across the canal, according to (3.17). The plot includes the variation of this quantity with x as well as the dependences of the entrance value $|Q dP'/dx|_{x=0} = |(\sqrt{Q}/k) \tan(k/\sqrt{Q})|$ on α and k for $\beta = 0.5$. Additional computations for other values of β (not shown here) revealed that the eccentricity has a negligible effect on the tidal volume flux, so that the curves obtained with $\beta \neq 0.5$ are almost identical to those plotted in the figure.

As can be seen in figure 2(a), the tidal volume flux decreases along the canal to vanish at the closed end. As expected, larger values of α , associated with smaller viscous forces, result in increased flow rates. The dependence of $|Q dP'/dx|_{x=0}$ on k is shown in figure 2(b). For small k , i.e. wavelengths that are much larger than the

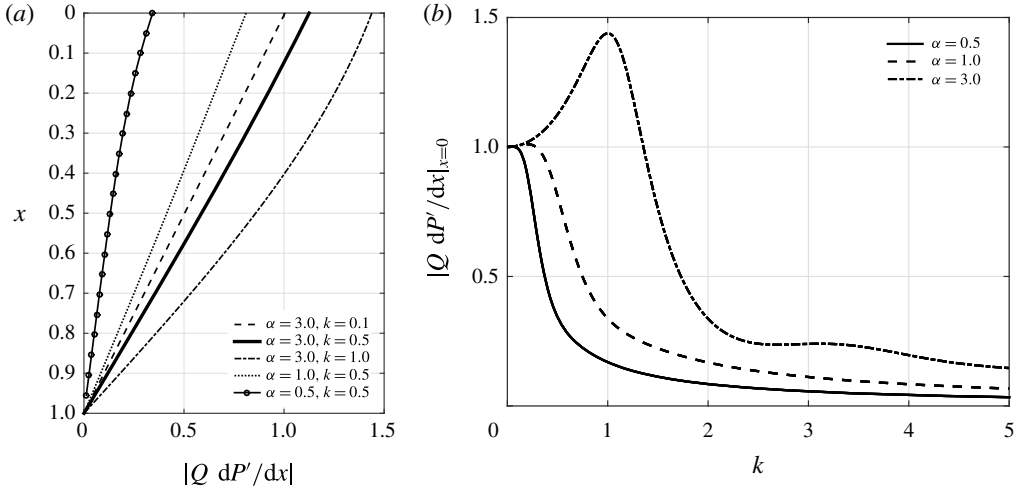


FIGURE 2. The value of $|Q dP'/dx|$ evaluated with use made of (3.21) and (5.1) for $h_o = 1 - \beta \cos(2\pi s)$, $\ell = 1$ and $\beta = 0.5$. Panel (a) shows the variation with x , whereas (b) shows the parametric dependence of the entrance value $|Q dP'/dx|_{x=0}$.

canal length, the pressure along the canal is almost uniform, and the dura membrane deforms uniformly in response to the pressure oscillations in the cranial cavity, following (2.26), resulting in an entrance flow rate that is independent of the flow conditions, so that the value of $|Q dP'/dx|_{x=0}$ for $k \ll 1$ is identical for all α . In the opposite limit $k \gg 1$ the wavelength is much shorter than the canal length, so that at a given instant of time we find regions of positive and negative deformation of the dura membrane along the canal, which tend to have a cancelling effect on the entrance flow rate, reflected in the decrease of $|Q dP'/dx|_{x=0}$ for $k \gg 1$. An interesting result from the model is that $|Q dP'/dx|_{x=0}$ reaches a maximum at an intermediate value of the wavenumber k (i.e. $k \simeq 1$ for $\alpha = 3$), associated with elastic wave speeds $(E_c/\rho)^{1/2}$ on the order of ωL .

Although variations of the eccentricity do not significantly alter the tidal volume flux, the velocity fields associated with different values of β are very different, as seen in the comparisons in figure 3, which exhibit the distributions of streamwise velocity amplitude $|u_0| = |U|$ at different cross-sections and for varying eccentricities, including the concentric case, $\beta = 0$. Although the analytical solution given above applies only to configurations with $h_c \ll R$, the width of the annular cross-section in the figure is arbitrarily enlarged to facilitate visualization. As expected, the decelerating effect of viscous forces becomes more (less) effective in regions of smaller (larger) canal width, leading to the nonuniform velocity distributions depicted in the figure.

Steady streaming velocities $\langle u_1 \rangle$, evaluated for $k = 0.5$ and $\alpha = 3$ from (4.5) with $d\langle p'_1 \rangle/dx$ computed using (4.7), are plotted in figures 4 and 5. The circular plot in figure 4(b) shows the distribution of $\langle u_1 \rangle$ for $\beta = 0.5$ and $x = 0.25$. Transverse profiles of $\langle u_1 \rangle$ across the narrowest ($s = 0$) and widest ($s = 1/2$) sections are plotted below at different heights for this same eccentricity. As can be seen, the resulting velocities are negative (upwards) in the narrow part of the canal and predominantly positive (downwards) in the wider regions. The associated flow pattern is schematically represented by the arrows in figure 4(a).

The circular plots in figure 5 represent distributions of $\langle u_1 \rangle$ across the canal section at different heights and eccentricities, as in figure 3. The computations for $\beta \neq 0$

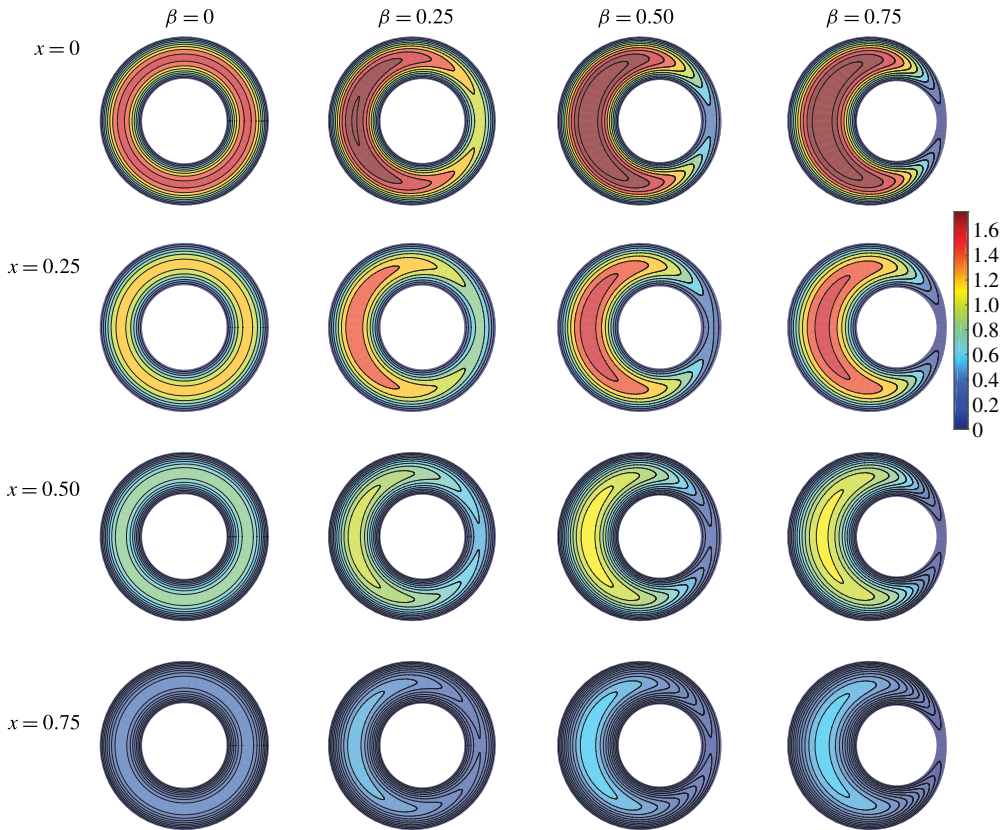


FIGURE 3. The distribution of $|u_0| = |U|$ for $k = 0.5$ and $\alpha = 3$ as obtained at different sections x for varying eccentricities.

reveal that the maximum velocity $\langle u_1 \rangle_{max}$ always occurs in the symmetry plane at the centre point of the widest section. By way of contrast, negative (upward) velocities are found in the narrow part of the canal, in agreement with the transverse profiles shown in figure 4. The minimum velocity $\langle u_1 \rangle_{min}$ occurs at the narrowest section $s = 0$ for sufficiently small values of $\beta > 0$ but moves away from the symmetry plane for large eccentricities, as can be clearly observed in the results for $\beta = 0.75$. Also of interest is the fact that, as can be inferred from the plots corresponding to $\beta = 0$, the apparent volume flux $\int_0^1 h_o(\int_0^1 \langle u_1 \rangle d\eta) ds$ associated with the steady-streaming flow is nonzero, that being a direct consequence of the deformation of the canal wall, which enters in the integral continuity balance (4.7).

The distributions of $\langle u_1 \rangle_{max}$ and $\langle u_1 \rangle_{min}$ along the canal are plotted on figure 4(b) for different values of β . The bulk motion, characterized by these two bounding values, is found to be extremely weak for concentric cylinders, but becomes much more pronounced for eccentric canals, for which we find values of $\langle u_1 \rangle$ of order unity, corresponding to dimensional steady-streaming velocities of order $\varepsilon^2 \omega L$. It is also of interest that the configuration with intermediate eccentricity ($\beta = 0.5$) exhibits velocities that are larger than those found with $\beta = 0.25$ and $\beta = 0.75$. This non-monotonic dependence, associated with the nonlinear interactions of the steady-streaming flow, is an indication of the importance of the geometrical effects.

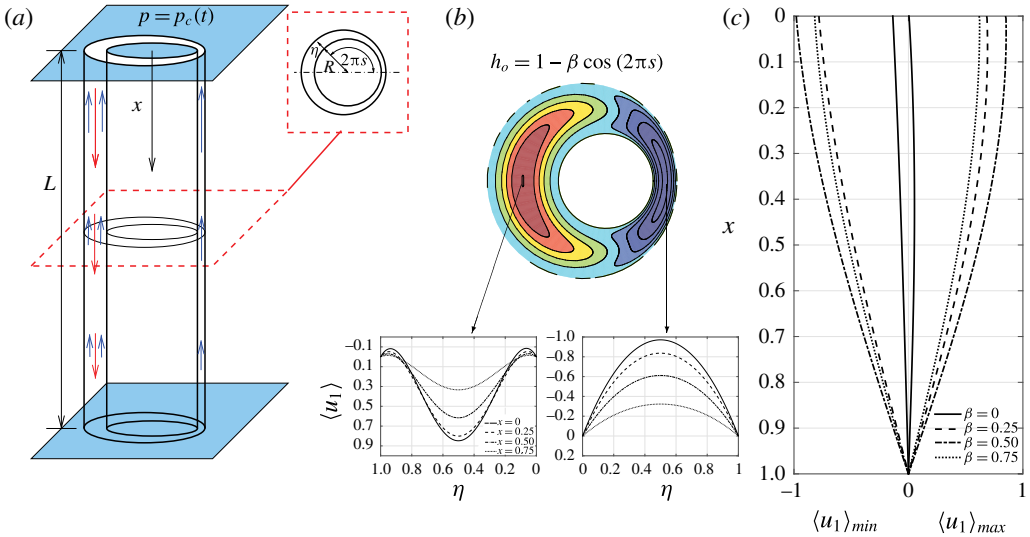


FIGURE 4. Schematic view of the model geometry considered here (a), distribution of $\langle u_1 \rangle$ corresponding to $k = 0.5$, $\alpha = 3$ and $\beta = 0.5$ (b), and streamwise variation of the maximum (downward) and minimum (upward) velocities for different values of β (c).

The results suggest that accurate quantifications of CSF flow in the spinal canal should consider the specific geometric features of the SAS, described in our model by the functions $h_o(x, s)$ and $\ell(x)$.

For completeness, the distributions of azimuthal velocity $\langle w_1 \rangle$ across the canal section are shown in figure 6 for the case $k = 0.5$ and $\alpha = 3$ corresponding to the plots in figure 5. As can be seen, the distributions exhibit the expected symmetry, with the azimuthal velocity vanishing at the symmetry plane, defined by the sections $s = 0$ and $s = 0.5$. The circumferential motion, identically zero for concentric configurations, becomes more pronounced for increasing β , with the configuration with $\beta = 0.5$ exhibiting the largest values of $\langle w_1 \rangle$. It is also of interest that the azimuthal motion is faster near the canal end, as needed to accommodate the more rapid deceleration of the streamwise motion occurring there, which is apparent in figure 4(c). The location of the peak values of $\langle w_1 \rangle$, found near $s \approx 0.25$ at the entrance, progressively move towards the narrowest section ($s = 0$) for increasing values of x , an effect that is more noticeable as β increases.

6. Experiments of steady streaming in slender elastic annular tubes

We have conducted a series of *in-vitro* experiments in order to qualitatively validate the predictions of our asymptotic analysis. The experiments involve the simplified geometry depicted in figure 4(a), that is, a straight, slender, elastic annular canal of length $L = 25$ cm bounded between cylindrical tubes of radii $R = 7$ mm and $R + h_c = 10.5$ mm. Axisymmetric cases ($\beta = 0$) with coaxial tubes were investigated along with a case with eccentricity $\beta = 0.1$. The annular tube is connected at one end to a rigid container where the pressure p_c is varied periodically through a peristaltic pump with a frequency of 1 Hz to produce an oscillatory flow at the entrance of the channel of ± 2 cm s⁻¹. The values of h_c and ω yield $\alpha = h_c / (v/\omega)^{1/2} \simeq 8.7$ for the associated Womersley number. The ratio of the displaced volume to that contained

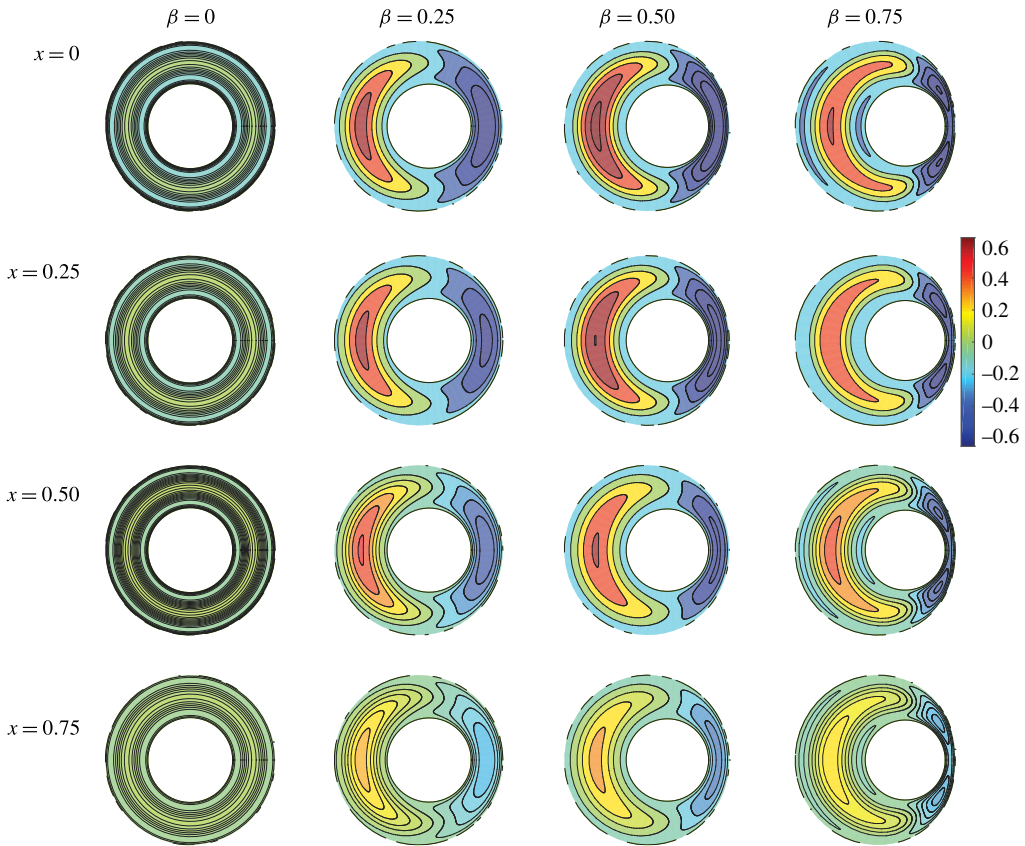


FIGURE 5. The distribution of $\langle u_1 \rangle$ for $k=0.5$ and $\alpha=3$ as obtained at different sections x for varying eccentricities.

in the unperturbed annular tube was selected to be $\Delta V/V = 1/50$, consistent with the values in the clinical observations. The results shown below correspond to an elastic outer tube, representing the deformable dura membrane, with an inner rigid rod, representing the spinal cord. Additional experiments using an inner elastic tube surrounded by a rigid outer cylinder and two elastic tubes were found to give similar flow features.

The flow velocity was measured in a coaxial plane at various downstream locations along the tube by particle image velocimetry (PIV) using neutrally buoyant hollow, spherical, silver-coated micro particles with a diameter of $0.5 \mu\text{m}$. Figure 7 shows the time variation of the oscillatory velocity, averaged over the cross-section of the annular gap at various downstream locations along the tube for the case of a concentric annular tube ($\beta = 0$). The flow corresponds to a pure harmonic motion of biphasic periodic tides of ebb-and-flow with frequency ω , with amplitudes monotonically decreasing as one moves from the open end to the closed end of the annular tube, consistent with the predictions of the zeroth-order solution of the asymptotic analysis shown in figures 2 and 3, and as also observed in many clinical MRI measurements.

The PIV measurements were sufficiently accurate to capture the decay in the amplitude of the leading-order oscillatory flow as shown in figure 7. Unfortunately, the polymer tubes that are necessary for simulation of the compliance of the canal

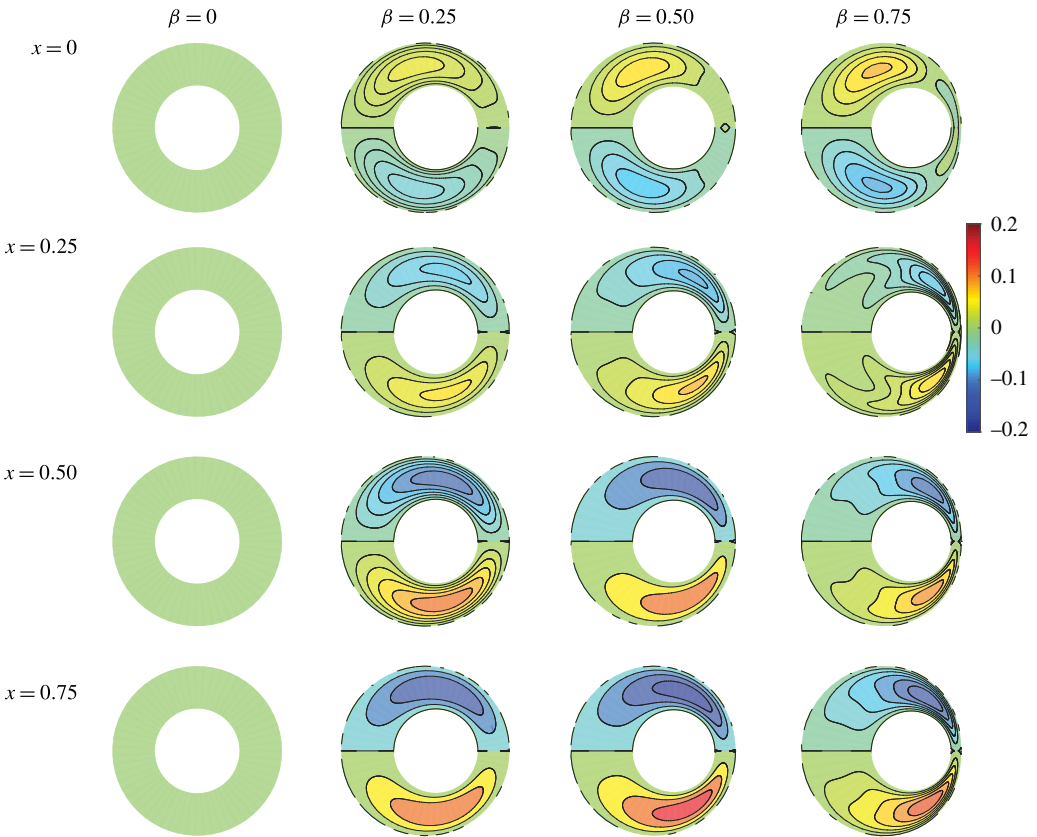


FIGURE 6. The distribution of $\langle w_1 \rangle$ for $k=0.5$ and $\alpha=3$ as obtained at different sections x for varying eccentricities.

are not optically clean and give rise to undesirable reflections and scattering effects that affected the accuracy of the PIV velocity measurements near the walls of the narrow annular gap. Because the resulting measurement error is much greater than the streaming velocities, integrating these measurements over 20–30 min (1200–1800 cycles) results in very noisy measurements. Thus, to quantify the velocity of the streaming motion we opted to use the far more reliable method of injecting a bolus of neutrally buoyant fluorescent dye in the annular gap of the canal at the midpoint between its entrance and closed end, and accurately measure over 20–30 min the velocity of the upward and downward propagation of the fronts as shown in the schematic panels of figure 8. We selected this method not only for its accuracy compared to the PIV measurements but also because it fully resembles the technique used in all the radiological measurements done in the clinical setting, where a bolus of marker is injected in the lumbar region, making our results easier to understand by the medical community. The tube was oriented horizontally with the inner tube offset slightly to introduce an eccentricity ($\beta=0.1$), as shown in figure 8(b).

The annular tube was illuminated with an ultraviolet light and imaged using a CCD camera with a resolution of 2000×2000 pixels. Fluorescence images were recorded at the same oscillation phase every 30 s over 20 min to track the time evolution of the injected patch. Figure 8 shows the images at 150 s intervals for

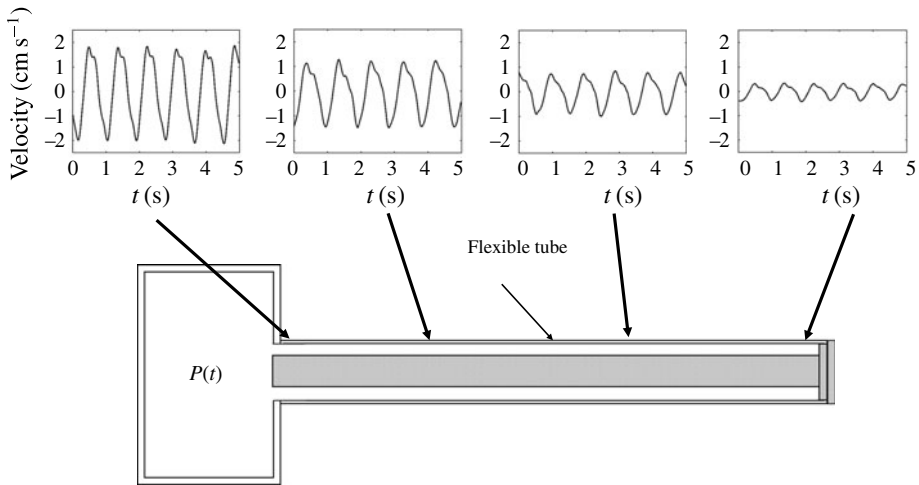


FIGURE 7. Time variation of the oscillatory axial velocity averaged along the cross-section at various downstream locations along the tube for the case of an axisymmetric annular canal ($\beta = 0$) with flexible outer wall and rigid inner surface.

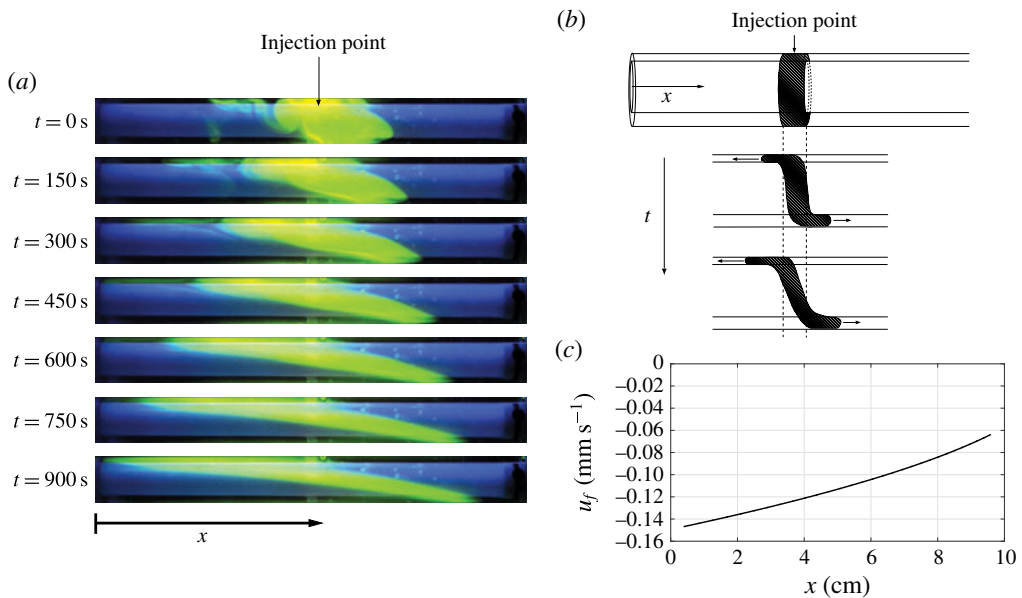


FIGURE 8. (a) Time evolution of the fluorescent marker initially injected in the annular gap at the midpoint between the entrance and closed end of the tube. The open entrance to the channel is located on the left-hand side. (b) Schematic representation of the evolution of the fluorescent marker injected at the midpoint along the tube. (c) Propagation velocity of the dye front towards the open entrance of the tube. Note the monotonic increase of the streaming velocity $\langle u_1 \rangle$ approaching the open entrance. The measurements correspond to an eccentric case with $\beta = 0.1$

the first 15 min. These measurements clearly demonstrate that, in addition to the periodic harmonic oscillatory motion described in figure 7, there is a bulk motion

that gradually transports the dye upwards (to the left in this experiment) into the tank and downwards (right) towards the closed end. Measurements of the speed at which these two fronts propagate allowed us to obtain order-of-magnitude estimates for the local velocity of the mean streaming motion (as an example, figure 8(c) represents the upward velocity of the front recorded in one of the experiments). Consistent with the analysis in § 5, we found that the speed of the dye front propagating towards the tank gradually increases as the open end is approached, while at the same time the speed of the opposite front moving to the right decreases on approaching the closed end of the tube, in agreement with the results in figures 4 and 5. It is important to emphasize that, as predicted by the analysis, these streaming velocities are a factor ε smaller (i.e. about two orders of magnitude) than the amplitude of the velocity fluctuations measured for the harmonic base flow described above. Our results are consistent with many radiological measurements; see, for example, the measurements of Greitz & Hannerz (1996), who showed in their radionuclide cisternography (figure 4 in that paper) that tracers injected in the lumbar region reached the thoracic area much faster than they moved downwards into the sacral end.

We have further corroborated that the observed bulk transport is not due to any gravitational or thermal effects by repeating the above experiments without the imposed pressure pulsations in the tank. For this case, the dye diffused only several millimetres left and right over 10 h.

7. Conclusions

We have investigated the physical mechanism responsible for recirculation of CSF in the spinal canal by formulating an asymptotic analysis of a physiologically relevant geometry accounting for the small compliance of the dura membrane through a small parameter ε , on the order of the ratio of the tidal volume to the total CSF volume in the spinal canal. We have shown that the flow at leading order, in the limit $\varepsilon \ll 1$, reduces to an oscillatory linear lubrication problem, while the first-order corrections provide the description for the steady-streaming flow, responsible for the bulk motion along the canal.

The general asymptotic formulation has been applied to the simplified case of a closed-end, compliant, constant diameter tube (spinal canal) containing an eccentric coaxial cylindrical insert (spinal cord). We have shown that, consistent with radiological observations in human adults, the small pressure pulsation imposed at the entrance results in an oscillatory motion whose amplitude decreases along the length of the compliant canal. We have also demonstrated that this oscillatory motion induces a slow streaming motion with velocities two orders of magnitude smaller, and establishes a slow recirculating bulk motion bringing fluid downwards along the canal and returning it upwards to its entrance. The amplitude of the oscillatory flow measured by MRI in human subjects in the cervical region is 1–2 cm s⁻¹ decreasing as one moves downwards along the spinal canal, and one can then estimate from our analysis the magnitude of the mean steady streaming velocity (bulk recirculating flow) of the CSF in the human spinal canal in physiologically relevant conditions to be on the order of 1–2 cm min⁻¹, which is also consistent with radiological observations. Based on the values of the variation of the streaming velocity experimentally measured along the length of the canal, one can estimate the time for the bulk recirculating flow to refresh the whole CSF in and out of the canal to be on the order of a few hours.

In summary, our analysis of an idealized geometry of the spinal canal has provided a mechanistic physical explanation of a known physiological process that has

remained unexplained for the past 50 years. Although the anatomy of the SAS in the spinal canal is far more complex than the specific geometry used in the exploratory quantification presented above, the order of magnitude of the results is fully consistent with current radiological observations. The formulation developed here, combined with accurate anatomical descriptions of the SAS geometry, given by the functions $h_o(x, s)$ and $\ell(x)$, and of the elastic properties of the dura membrane, embodied in the distribution of $E_e(x)$, could be employed in future work to develop more accurate quantitative predictions. Our formulation could also be extended to account for additional effects, including a more detailed description of the elastic properties of the dura membrane as well as the possible axial oscillatory motion of the spinal cord. The contribution to the Lagrangian motion arising from Stokes drift could be evaluated on the basis of the leading-order velocity description. Also, corrections associated with shear-enhanced diffusion, anticipated to be small in our previous estimates, could be incorporated in the model by introducing a passive scalar governed by an unsteady convection–diffusion equation. The improved understanding of the mechanism regulating the bulk motion of the CSF in the spinal canal resulting from this analysis may have potential implications in optimizing intrathecal targeted drug delivery systems (injecting the drug directly in the CSF around the spinal cord) and in improving the current understanding of the etiology of a large class of neurological conditions.

Acknowledgements

C.M.-B. wants to thank the Spanish MEDC and the Salvador Madariaga Program for the financial support provided during their sabbatical stay at UC San Diego. E.C.-H. would like to thank ‘la Caixa’ (Caja de Ahorros y Pensiones de Barcelona) for partial financial support through a ‘la Caixa’ Fellowship. We wish to dedicate this work to Professor W. (Bill) Bradley who suddenly passed away on November 20th, 2017, just days before this manuscript was accepted for publication. Bill was an outstanding neuroradiologist and the source of the inspiration that guided our work on the motion of the CSF in the CNS.

REFERENCES

- AMBARKI, K., LINDQVIST, T., WÅHLIN, A., PETTERSON, E., WARNTJES, M. J. B., BIRGANDER, R., MALM, J. & EKLUND, A. 2012 Evaluation of automatic measurement of the intracranial volume based on quantitative MR imaging. *Am. J. Neuroradiol.* **33** (10), 1951–1956.
- BATCHELOR, G. K. 2000 *An Introduction to Fluid Dynamics*. Cambridge University Press.
- BERKOUK, K., CARPENTER, P. W. & LUCEY, A. D. 2003 Pressure wave propagation in fluid-filled co-axial elastic tubes part 1: basic theory. *J. Biomech. Engng* **125** (6), 852–856.
- BHADELIA, R. A., BOGDAN, A. R., KAPLAN, R. F. & WOLPERT, S. M. 1997 Cerebrospinal fluid pulsation amplitude and its quantitative relationship to cerebral blood flow pulsations: a phase-contrast MR flow imaging study. *Neuroradiology* **39** (4), 258–264.
- BOTTROS, M. M. & CHRISTO, P. J. 2014 Current perspectives on intrathecal drug delivery. *J. Pain Res.* **7**, 615–626.
- BOULTON, M., FLESSNER, M., ARMSTRONG, D., MOHAMED, R., HAY, J. & JOHNSTON, M. 1999 Contribution of extracranial lymphatics and arachnoid villi to the clearance of a CSF tracer in the rat. *Am. J. Physiol. Regul. Integr. Comparat. Physiol.* **276** (3 Part 2), R818–R823.
- CARPENTER, P. W., BERKOUK, K. & LUCEY, A. D. 2003 Pressure wave propagation in fluid-filled co-axial elastic tubes part 2: mechanisms for the pathogenesis of syringomyelia. *J. Biomech. Engng* **125** (6), 857–863.

- CASTILLO, M. 2016 *Spinal Imaging: Critical Topics for Clinical Practice*, 2nd edn. Jaypee Brothers Medical Publishers.
- CHIKLY, B. 1998 Is human CSF reabsorbed by lymph? Lymph drainage therapy and manual drainage of the central nervous system. *Am. Acad. Osteopath. J.* **8** (2), 28–34.
- CUTLER, R. W., PAGE, L., GALICICH, J. & WATTERS, G. V. 1968 Formation and absorption of cerebrospinal fluid in man. *Brain* **91** (4), 707–720.
- DAVSON, H. 1966 Formation and drainage of the cerebrospinal fluid. *Sci. Basis Med. Annu. Rev.* 238–259.
- DI CHIRO, G. 1964 Movement of the cerebrospinal fluid in human beings. *Nature* **204**, 290–291.
- DI CHIRO, G. 1966 Observations on the circulation of the cerebrospinal fluid. *Acta Radiol. Diagn. (Stockh)* **5**, 988–1002.
- DI CHIRO, G., LARSON, S. M., HARRINGTON, T., JOHNSTON, G. S., GREEN, M. V. & SWANN, S. J. 1973 Descent of cerebrospinal fluid to spinal subarachnoid space. *Acta Radiol. Diagn.* **14** (4), 379–384.
- DREHA-KULACZEWSKI, S., JOSEPH, A. A., MERBOLDT, K. D., LUDWIG, H. C., GÄRTNER, J. & FRAHM, J. 2015 Inspiration is the major regulator of human CSF flow. *J. Neurosci.* **35** (6), 2485–2491.
- ELAD, D., HALPERN, D. & GROTBORG, J. B. 1992 Gas dispersion in volume-cycled tube flow. I. Theory. *J. Appl. Phys.* **72** (1), 312–320.
- GAVER, D. P. & GROTBORG, J. B. 1986 An experimental investigation of oscillating flow in a tapered channel. *J. Fluid Mech.* **172**, 47–61.
- GREITZ, D., FRANCK, A. & NORDELL, B. 1993 On the pulsatile nature of intracranial and spinal CSF-circulation demonstrated by MR imaging. *Acta Radiol.* **34** (4), 321–328.
- GREITZ, D. & HANNERZ, J. 1996 A proposed model of cerebrospinal fluid circulation: observations with radionuclide cisternography. *Am. J. Neuroradiol.* **17** (3), 431–438.
- GROTBORG, J. B. 1984 Volume-cycled oscillatory flow in a tapered channel. *J. Fluid Mech.* **141**, 249–264.
- GROTBORG, J. B. & JENSEN, O. E. 2001 Biofluid mechanics in flexible tubes. *Annu. Rev. Fluid Mech.* **33**, 43–65.
- HASELTON, F. R. & SCHERER, P. W. 1980 Bronchial bifurcations and respiratory mass transport. *Science* **208** (4439), 69–71.
- HASELTON, F. R. & SCHERER, P. W. 1982 Flow visualization of steady streaming in oscillatory flow through a bifurcating tube. *J. Fluid Mech.* **123**, 315–333.
- HAUGHTON, V. & MARDAL, K.-A. 2014 Spinal fluid biomechanics and imaging: an update for neuroradiologists. *Am. J. Neuroradiol.* **35** (10), 1864–1869.
- HETTIARACHCHI, H. D. M., HSU, Y., HARRIS, T. J. & LINNINGER, A. A. 2011 The effect of pulsatile flow on intrathecal drug delivery in the spinal canal. *Ann. Biomed. Engng* **39** (10), 2592–2602.
- JAYARAMAN, G. & SARKAR, A. 2005 Nonlinear analysis of arterial blood flow – steady streaming effect. *Nonlinear Anal. Theory Methods Appl.* **63** (5), 880–890.
- JOHANSON, C. E., DUNCAN, J. A., KLINGE, P. M., BRINKER, T., STOPA, E. G. & SILVERBERG, G. D. 2008 Multiplicity of cerebrospinal fluid functions: new challenges in health and disease. *Cerebrospinal Fluid Res.* **5** (1), 10.
- KALATA, W., MARTIN, B. A., OSHINSKI, J. N., JEROSCH-HEROLD, M., ROYSTON, T. J. & LOTH, F. 2009 MR measurement of cerebrospinal fluid velocity wave speed in the spinal canal. *IEEE Trans. Biomed. Engng* **56** (6), 1765–1768.
- KAO, Y. H., GUO, W. Y., LIOU, A. J. K., HSIAO, Y. H. & CHOU, C. C. 2008 The respiratory modulation of intracranial cerebrospinal fluid pulsation observed on dynamic echo planar images. *Magn. Reson. Imag.* **26** (2), 198–205.
- KROIN, J. S., ALI, A., YORK, M. & PENN, R. D. 1993 The distribution of medication along the spinal canal after chronic intrathecal administration. *Neurosurgery* **33** (2), 226–230.
- LANZ, E., DÄUBLER, F., EISSNER, D., BROD, K. H. & THEISS, D. 1986 Effect of spinal CSF dynamics on the subarachnoid diffusion of a substance applied close to the spinal cord. *Reg. Anaesth.* **9** (1), 4–8.

- LEVY, L. M. & DI CHIRO, G. 1990 MR phase imaging and cerebrospinal fluid flow in the head and spine. *Neuroradiology* **32** (5), 399–406.
- LINNINGER, A. A., TANGEN, K., HSU, C. Y. & FRIM, D. 2016 Cerebrospinal fluid mechanics and its coupling to cerebrovascular dynamics. *Annu. Rev. Fluid Mech.* **48**, 219–257.
- LORENZO, A. V., PAGE, L. K. & WATTERS, G. V. 2016 Relationship between cerebrospinal fluid formation, absorption and pressure in human hydrocephalus. *Brain* **93** (4), 679–692.
- LOTH, F., YARDIMCI, M. A. & ALPERIN, N. 2001 Hydrodynamic modeling of cerebrospinal fluid motion within the spinal cavity. *J. Biomech. Engng* **123** (1), 71–79.
- MILHORAT, T. H. 1969 Choroid plexus and cerebrospinal fluid production. *Science* **166** (3912), 1514–1516.
- MILHORAT, T. H. 1975 The third circulation revisited. *J. Neurosurg.* **42** (6), 628–645.
- MILHORAT, T. H., HAMMOCK, M. K., FENSTERMACHER, J. D., RALL, D. P. & LEVIN, V. A. 1971 Cerebrospinal fluid production by the choroid plexus and brain. *Science* **173** (3994), 330–332.
- MOKRI, B. 2001 The Monro–Kellie hypothesis applications in CSF volume depletion. *Neurology* **56** (12), 1746–1748.
- MUTHU, P., RATHISH KUMAR, B. V. & CHANDRA, P. 2003 Effect of elastic wall motion on oscillatory flow of micropolar fluid in an annular tube. *Archive Appl. Mech.* **73** (7), 481–494.
- NELISSEN, R. M. 2008 Fluid mechanics of intrathecal drug delivery. PhD thesis, École Polytechnique Fédérale de Lausanne.
- NITZ, W. R., BRADLEY, W. G. JR., WATANABE, A. S., LEE, R. R., BURGOYNE, B., O’SULLIVAN, R. M. & HERBST, M. D. 1992 Flow dynamics of cerebrospinal fluid: assessment with phase-contrast velocity MR imaging performed with retrospective cardiac gating. *Radiology* **183** (2), 395–405.
- OREŠKOVIĆ, D. & KLARICA, M. 2010 The formation of cerebrospinal fluid: nearly a hundred years of interpretations and misinterpretations. *Brain Res. Rev.* **64** (2), 241–262.
- PADMANABHAN, N. & PEDLEY, T. J. 1987 Three-dimensional steady streaming in a uniform tube with an oscillating elliptical cross-section. *J. Fluid Mech.* **178**, 325–343.
- PARDRIDGE, W. M. 2011 Drug transport in brain via the cerebrospinal fluid. *Fluids Barriers CNS* **8** (1), 7.
- PENN, R. D. 2003 Intrathecal medication delivery. *Neurosurg. Clinics North Am.* **14** (3), 381–387.
- POLLAY, M. 2010 The function and structure of the cerebrospinal fluid outflow system. *Cerebrospinal Fluid Res.* **7** (1), 9.
- RILEY, N. 2001 Steady streaming. *Annu. Rev. Fluid Mech.* **33**, 43–65.
- SARKAR, A. & JAYARAMAN, G. 2001 Nonlinear analysis of oscillatory flow in the annulus of an elastic tube: application to catheterized artery. *Phys. Fluids* **13** (10), 2901–2911.
- TAYLOR, G. 1953 Dispersion of soluble matter in solvent flowing slowly through a tube. *Proc. R. Soc. Lond. A* **219**, 186–203.
- WAGSHUL, M. E., CHEN, J. J., EGNOR, M. R., MCCORMACK, E. J. & ROCHE, P. E. 2006 Amplitude and phase of cerebrospinal fluid pulsations: experimental studies and review of the literature. *J. Neurosurg.* **104** (5), 810–819.
- WAGSHUL, M. E., EIDE, P. K. & MADSEN, J. R. 2011 The pulsating brain: a review of experimental and clinical studies of intracranial pulsatility. *Fluids Barriers CNS* **8** (1), 5.
- WANG, D. M. & TARBELL, J. M. 1992 Nonlinear analysis of flow in an elastic tube (artery): steady streaming effects. *J. Fluid Mech.* **239**, 341–358.
- WATERS, S. L. & GUIOT, C. 2001 Flow in an elastic tube subject to prescribed forcing: a model of umbilical venous flow. *Comput. Math. Methods Med.* **3** (4), 287–298.
- WATSON, E. J. 1983 Diffusion in oscillatory pipe flow. *J. Fluid Mech.* **133**, 233–244.
- WHEDON, J. M. & GLASSEY, D. 2009 Cerebrospinal fluid stasis and its clinical significance. *Alternat. Ther. Health Med.* **15** (3), 54–60.
- YASUDA, H. 1984 Longitudinal dispersion of matter due to the shear effect of steady and oscillatory currents. *J. Fluid Mech.* **148**, 383–403.