

- 6 Leucht S, Tardy M, Komossa K, Heres S, Kissling W, Salanti G, et al. Antipsychotic drugs versus placebo for relapse prevention in schizophrenia: a systematic review and meta-analysis. *Lancet* 2012; **379**: 2063–71.
- 7 Pigott TA, Carson WH, Saha AR, Torbeyns AF, Stock EG, Ingenito GG. Aripiprazole for the prevention of relapse in stabilized patients with chronic schizophrenia: a placebo-controlled 26-week study. *J Clin Psychiatry* 2003; **64**: 1048–56.
- 8 Murray RM, Quattrone D, Natesan S, van Os J, Nordentoft M, Howes O, et al. Should psychiatrists be more cautious about the long-term prophylactic use of antipsychotics? *Br J Psychiatry* 2016; **209**: 361–5.
- 9 Geddes JR, Carney SM, Davies C, Furukawa TA, Kupfer DJ, Frank E, et al. Relapse prevention with antidepressant drug treatment in depressive disorders: a systematic review. *Lancet* 2003; **361**: 653–61.
- 10 Jaaskelainen E, Juola P, Hirvonen N, McGrath JJ, Saha S, Isohanni M, et al. A systematic review and meta-analysis of recovery in schizophrenia. *Schizophr Bull* 2013; **39**: 1296–306.
- 11 Aastrup C, Fossum A, Holmboe R. *Prognosis in Functional Psychoses. Clinical, Social and Genetic Aspects*. Charles C. Thomas, 1962.
- 12 Robinson D, Woerner MG, Alvir JM, Bilder R, Goldman R, Geisler S, et al. Predictors of relapse following response from a first episode of schizophrenia or schizoaffective disorder. *Arch Gen Psychiatry* 1999; **56**: 241–7.
- 13 Morgan C, Lappin J, Heslin M, Donoghue K, Lomas B, Reininghaus U, et al. Reappraising the long-term course and outcome of psychotic disorders: the AESOP-10 study. *Psychol Med* 2014; **44**: 2713–26.
- 14 Ran M-S, Weng X, Chan CL-W, Chen EY-H, Tang C-P, Lin F-R, et al. Different outcomes of never-treated and treated patients with schizophrenia: 14-year follow-up study in rural China. *Br J Psychiatry* 2015; **207**: 495–500.
- 15 Dorph-Petersen KA, Pierri JN, Perel JM, Sun Z, Sampson AR, Lewis DA. The influence of chronic exposure to antipsychotic medications on brain size before and after tissue fixation: a comparison of haloperidol and olanzapine in macaque monkeys. *Neuropsychopharmacology* 2005; **30**: 1649–61.
- 16 Ho BC, Andreasen NC, Ziebell S, Pierson R, Magnotta V. Long-term antipsychotic treatment and brain volumes: a longitudinal study of first-episode schizophrenia. *Arch Gen Psychiatry* 2011; **68**: 128–37.
- 17 Andreasen NC, Liu D, Ziebell S, Vora A, Ho BC. Relapse duration, treatment intensity, and brain tissue loss in schizophrenia: a prospective longitudinal MRI study. *Am J Psychiatry* 2013; **170**: 609–15.
- 18 Lesh TA, Tanase C, Geib BR, Niendam TA, Yoon JH, Minzenberg MJ, et al. A multimodal analysis of antipsychotic effects on brain structure and function in first-episode schizophrenia. *JAMA Psychiatry* 2015; **72**: 226–34.
- 19 Wunderink L, Nienhuis FJ, Sytema S, Slooff CJ, Knegtering R, Wiersma D. Guided discontinuation versus maintenance treatment in remitted first-episode psychosis: relapse rates and functional outcome. *J Clin Psychiatry* 2007; **68**: 654–61.
- 20 Sampson S, Mansour M, Maayan N, Soares-Weiser K, Adams CE. Intermittent drug techniques for schizophrenia. *Cochrane Database Syst Rev* 2013; **7**: CD006196.
- 21 Kane JM, Davis JM, Schooler N, Marder S, Casey D, Brauzer B, et al. A multidose study of haloperidol decanoate in the maintenance treatment of schizophrenia. *Am J Psychiatry* 2002; **159**: 554–60.
- 22 Wang CY, Xiang YT, Cai ZJ, Weng YZ, Bo QJ, Zhao JP, et al. Risperidone maintenance treatment in schizophrenia: a randomized, controlled trial. *Am J Psychiatry* 2010; **167**: 676–85.
- 23 McGrath J, Saha S, Chant D, Welham J. Schizophrenia: a concise overview of incidence, prevalence, and mortality. *Epidemiol Rev* 2008; **30**: 67–76.

psychiatry in pictures

Up and Away by Isobel Prescott (1935–2013)

Lucy Alexander

Citation: Press release for the 2009 Parkinson's Disease Society Mervyn Peake Award for Art

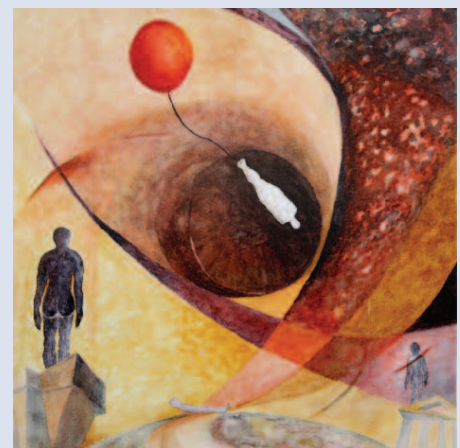
Cambridge woman wins Parkinson's Disease Society award for art

Isobel Prescott, from Cambridge, has won this year's Mervyn Peake Award for Art. Isobel won with her painting *Up and Away* and her award was presented by Richard Briers and Fabian Peake at an awards ceremony at Westminster Central Hall in London on 3 July [2009].

Launched by the Parkinson's Disease Society (PDS) and the Peake family 7 years ago, the awards celebrate the creative achievements of people with Parkinson's in art, poetry and photography. The awards are held in memory of the late illustrator, writer and poet Mervyn Peake (1911–1968), whose works included *Gormenghast* and the *Alice in Wonderland* illustrations, and who developed Parkinson's in later life.

This is the first year Isobel has entered the awards. Isobel, who was diagnosed with Parkinson's in 2005 said: 'I chanced to see the competition advertised in *The Parkinson* magazine and as I had a painting underway based on sketches made of *Event Horizon* (Anthony Gormley's London rooftop exhibition) I decided to enter considering it apposite – the straight and stiff human figures representing the stiffness of Parkinson's disease; the "up and away" being a fanciful flight from that lack of fluent mobility. Only later did I realise that this splendid prize founded by the Peake family, which I was delighted (of course) to receive, rightly embraces any subject thus encouraging sufferers to think and do beyond the brain malfunction of Parkinson's.'

Isobel was posthumously diagnosed with multiple system atrophy. Lucy Alexander is her daughter.



The British Journal of Psychiatry (2017)
211, 129. doi: 10.1192/bjp.bp.117.199067