

INFECTION CONTROL & HOSPITAL EPIDEMIOLOGY

VOLUME 27, NUMBER 8

AUGUST 2006

EDITORIAL

- 791 **Theory and Practice** • Keith F. Woeltje, MD, PhD

ORIGINAL ARTICLES

- 794 **Highly Sensitive and Efficient Computer-Assisted System for Routine Surveillance for Surgical Site Infection** • Annie Chalfine, MD, MPH; Daniel Cauet, PharmD; Wei Chi Lin, MHSc; Jacqueline Gonot, RN; Nadine Calvo-Verjat, MD; François-Emile Dazza, MD; Olivier Billuart; Marie Dominique Kitzis, PharmD, PhD; Jean Pierre Blériot, MD; Marie Laure Pibarot, MD; Jean Carlet, MD
- 802 **Admission-Specific Chronic Disease Scores as Alternative Predictors of Surgical Site Infection for Patients Undergoing Coronary Artery Bypass Graft Surgery** • Ruth Batista, RN, PhD; Keith Kaye, MD, MPH; Deborah S. Yokoe, MD, MPH
- 809 **Impact of Postdischarge Surveillance on Surgical Site Infection Rates for Several Surgical Procedures: Results From the Nosocomial Surveillance Network in The Netherlands** • Judith Manniën, MSc; Jan C. Wille; Ruud L. M. M. Snoeren; Susan van den Hof, PhD
- 817 **The Standardized Incidence Ratio as a Reliable Tool for Surgical Site Infection Surveillance** • Christophe Rioux, MD; Bruno Grandbastien, MD; Pascal Astagneau, MD, PhD
- 825 **Indices of Surgical Site Infection Risk and Prediction of Other Adverse Outcomes During Hospitalization** • Miguel Delgado-Rodríguez, MD, MPH, PhD; Silvia Palma, PhD; Antonio Gómez-Ortega, MD, PhD; Gabriel Martínez-Gallego, MD, PhD; Marcelino Medina-Cuadros, MD, PhD
- 829 **Surgical Site Infection (SSI) Rates Among Patients Who Underwent Mastectomy After the Introduction of SSI Prevention Policies** • Diana Vilar-Compte, MD, MSc; Rodrigo Roldán-Marín, MD; Carlos Robles-Vidal, MD; Patricia Volkow, MD
- 835 **Surgical Site Infection Surveillance: Analysis of Adherence to Recommendations for Routine Infection Control Practices** • Annalisa Castella, MD; Lorena Charrier, MD; Valeria Di Legami, MD; Francesca Pastorino; Enzo Carlo Farina, MD; Pier Angelo Argentero, MD; Carla Maria Zotti, Bsc, PhD; the Piemonte Nosocomial Infection Study Group
- 841 **Manual Methods Are Suboptimal Compared With Automated Methods for Cleaning of Single-Use Biopsy Forceps** • M. J. Alfa, PhD; R. Nemes, MD; N. Olson, BSc; A. Mulaire, BSc
- 847 **The Postoperative Bacteriuria Score: A New Way to Predict Nosocomial Infection After Prostate Surgery** • E. Girou, PhD; C. Rioux, MD; C. Brun-Buisson, MD; B. Lobel, MD; Infection Committee of the French Association of Urology
- 855 **Microbiology of Surgical Site Infections and Associated Antimicrobial Use Among Vietnamese Orthopedic and Neurosurgical Patients** • Le Thi Anh Thu, MD, PhD; Annette H. Sohn, MD; Nguyen Phuc Tien, BS; Vo Thi Chi Mai, MD, PhD; Vo Van Nho, MD, PhD; Tran Nguyen Trinh Hanh, MD; Ben Ewald, MBBS, MSc; Michael Dibley, MBBS, MPH

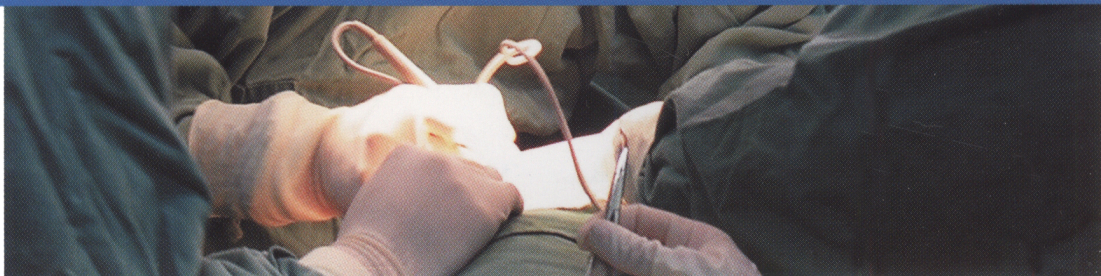
CONTENTS CONTINUED INSIDE



THE OFFICIAL JOURNAL OF THE SOCIETY FOR HEALTHCARE EPIDEMIOLOGY OF AMERICA
PUBLISHED FOR THE SOCIETY BY THE UNIVERSITY OF CHICAGO PRESS



INFECTION CONTROL & HOSPITAL EPIDEMIOLOGY



The Society for Healthcare Epidemiology of America (SHEA) and the University of Chicago Press are pleased to inaugurate a publishing alliance to bring greater visibility to important research in healthcare epidemiology and infection control. Written by and for infection control practitioners, this peer-reviewed journal will provide you with a monthly forum for all your critical research needs.

Immediate benefits of the SHEA/UCP partnership

- Articles in full-text HTML and PDF, fully searchable
- Online-only features such as links to PubMed, the *Journal of Infectious Diseases*, and *Clinical Infectious Diseases*
- E-mail content alerts with HTML links
- RSS feeds



The University of Chicago Press
Journals Division • P.O. Box 37005 • Chicago, IL 60637
www.journals.uchicago.edu/ICHE

INFECTION CONTROL & HOSPITAL EPIDEMIOLOGY

VOLUME 27, NUMBER 8

AUGUST 2006

CONTENTS CONTINUED FROM COVER

863 **Nose Picking and Nasal Carriage of *Staphylococcus aureus*** • Heiman F. L. Wertheim, MD, MSc; Menno van Kleef, MD; Margreet C. Vos, MD, PhD; Alewijn Ott, MD, PhD; Henri A. Verbrugh, MD, PhD; Wytse Fokkens, MD, PhD

868 **Knowledge, Attitude, and Practices Regarding Contact Precautions Among Iranian Physicians** • Mehrdad Askarian, MD, MPH; Ramin Shiraly, MD, MPH; Kiarash Aramesh, MD, MPH; Mary-Louise McLaws, DPHTM, MPH, PhD

CONCISE COMMUNICATIONS

873 **Infectious Diseases Physicians' Preferences for Continuing Medical Education on Antimicrobial Resistance and Other General Topics** • Jennifer Tuboku-Metzger Blakely, MPH; Ronda L. Sinkowitz-Cochran, MPH; William R. Jarvis, MD

876 **Adherence to American Society of Health-System Pharmacists Surgical Antibiotic Prophylaxis Guidelines in Iran** • Mehrdad Askarian, MD, MPH; Ali Reza Moravveji, MD, MPH; Hossein Mirkhani, PhD; Soha Namazi, PharmD, BCPS; Harrison Weed, MD

879 **Gentamicin-Susceptible or Gentamicin-Resistant Methicillin-Resistant *Staphylococcus aureus*: A Case-Case Study** • Jérôme Robert; Roland Bismuth; Nadine Lemaitre; Vincent Jarlier

LETTERS TO THE EDITOR

884 **Detection and Quantitation of the Etiologic Agents of Ventilator-Associated Pneumonia in Endotracheal Tube Aspirates From Patients in Iran** • Mohammad Rahbar, PhD; Massoud Hajia, PhD

885 **Infection Control for Emerging Infectious Diseases in Developing Countries and Resource-Limited Settings** • Anucha Apisarnthanarak, MD; Linda M. Mundy, MD

887 **Prevalence of Hepatitis B and C Among Brazilian Dentists** • Wanessa Teixeira Bellissimo-Rodrigues, MS, DDS; Alcyone Artioli Machado, MD, PhD; Fernando Bellissimo-Rodrigues, MD, MS; Margarida P. Nascimento; José Fernando C. Figueiredo, MD, PhD

An Official Publication of the Society for Healthcare Epidemiology of America

EDITOR

William R. Jarvis, MD • Hilton Head, SC

DEPUTY EDITOR

David P. Calfee, MD, MS • New York, NY

ASSISTANT EDITOR

Preeti N. Malani, MD, MSJ • Ann Arbor, MI

SENIOR ASSOCIATE EDITORS

C. Glen Mayhall, MD • Galveston, TX
Gina Pugliese, RN, MS • Chicago, IL
William Schaffner, MD • Nashville, TN

ASSOCIATE EDITORS

Donald A. Goldmann, MD • Boston, MA
Didier Pittet, MD, MS • Geneva, Switzerland
Andreas Widmer, MD, MS • Basel, Switzerland

SECTION EDITORS

Beyond Infection Control: The New Hospital Epidemiology

Wing Hong Seto, MD • Hong Kong

Disinfection and Sterilization

William A. Rutala, PhD, MPH • Chapel Hill, NC

From the Laboratory

Marcus Zervos, MD • Royal Oak, MI

Infections in Immunocompromised Patients

Kent Sepkowitz, MD • New York, NY

Information Management

John A. Sellick, DO • Amherst, NY

Issues in Surgery

James T. Lee, MD, PhD • St. Paul, MN

Medical News

Gina Pugliese, RN, MS • Chicago, IL
Martin S. Favero, PhD • Irvine, CA

Practical Healthcare Epidemiology

Loreen A. Herwaldt, MD • Iowa City, IA

Statistics for Hospital Epidemiology

David Birnbaum, PhD, MPH • Sidney, British Columbia

Topics in Long-Term Care

Philip W. Smith, MD • Omaha, NE

Topics in Occupational Medicine

David Weber, MD, MPH • Chapel Hill, NC

MANAGING EDITOR

Gordon Rudy, PhD, ELS • Chicago, IL

EDITORIAL ADVISORY BOARD

Miriam Alter, PhD, MD • Atlanta, GA
Lennox Archibald, MD, FRCP • Alachua, FL
Hilary Babcock, MD • St. Louis, MO
Elise M. Beltrami, MD, MPH • Decatur, GA
Marc J. M. Bonten, MD, PhD • Utrecht, The Netherlands
John M. Boyce, MD • New Haven, CT
Christian Brun-Buisson, MD • Creteil, France
John P. Burke, MD • Salt Lake City, UT
Yehuda Carmeli, MD, MPH • Tel Aviv, Israel
Carol Chenoweth, MD • Ann Arbor, MI
Sara E. Cosgrove, MD, MS • Baltimore, MD
Donald E. Craven, MD • Burlington, MA
Burke A. Cunha, MD • Mineola, NY
Erika D'Agata, MD, MPH • Boston, MA
Patch Dellinger, MD • Seattle, WA
Daniel Diekema, MD • Iowa City, IA
Charles E. Edmiston, Jr., PhD • Milwaukee, WI
Theodore C. Eickhoff, MD • Denver, CO
Jean Yves Fagon, MD, MPH • Paris, France
Mark Farrington, MA, FRCPATH • Cambridge, UK
Richard A. Garibaldi, MD • Farmington, CT
Petra Gastmeier, MD • Hanover, Germany
Dale N. Gerding, MD • Hines, IL
Stephan Harbarth, MD, MS • Geneva, Switzerland
Anthony D. Harris, MD, MPH • Baltimore, MD

David K. Henderson, MD • Bethesda, MD
Peter N. R. Heseltine, MD • San Juan, CA
Karen Hoffmann, RN, CIC, MS • Chapel Hill, NC
Janine Jagger, MPH, PhD • Charlottesville, VA
John A. Jernigan, MD, MS • Atlanta, GA
Ebbing Lautenbach, MD, MPH • Philadelphia, PA
L. Clifford McDonald, MD • Atlanta, Georgia
Allison McGeer, MD • Toronto, Ontario
John E. McGowan, Jr., MD • Atlanta, GA
Leonard A. Mermel, DO, ScM • Providence, RI
Robert R. Muder, MD • Pittsburgh, PA
Carlene A. Muto, MD, MS • Pittsburgh, PA
Joseph M. Mylotte, MD, CIC • Buffalo, NY
Juhani Ojajarvi, MD • Helsinki, Finland
Michael T. Osterholm, PhD, MPH • Minneapolis, MN
David L. Paterson, MBBS, FRACP • Pittsburgh, PA
Jan Evans Patterson, MD • San Antonio, TX
Sindy M. Paul, MD • Yardley, PA
David A. Pegues, MD • Los Angeles, CA
Michael A. Pfaller, MD • Iowa City, IA
Isaam Raad, MD • Houston, TX
Jordi Rello, MD, PhD • Tarragona, Spain
Manfred L. Rotter, MD, DipBact • Vienna, Austria
Henning Rüden, MD • Berlin, Germany
Lisa Saiman, MD, MPH • New York, NY
Syed A. Sattar, PhD • Ottawa, Ontario
William E. Scheckler, MD • Madison, WI
Lynne M. Schulster, PhD • Atlanta, GA
Andrew E. Simor, MD • Toronto, Ontario
Denis W. Spelman, MD • Prahan, Victoria, Australia
Susan Springthorpe, MSc • Ottawa, Ontario
Jeffrey R. Starke, MD • Houston, TX
Janet E. Stout, PhD • Pittsburgh, PA
Michael L. Tapper, MD • New York, NY
Clyde Thornsberry, PhD • Franklin, TN
Jerome Tokars, MD, PhD • Atlanta, GA
William Trick, MD • Chicago, IL
Antoni Trilla, MD, PhD • Barcelona, Spain
Robert A. Weinstein, MD • Chicago, IL

Infection Control and Hospital Epidemiology (ISSN 0899-823X) is published monthly by the University of Chicago Press, 1427 East 60th St., Chicago, IL 60637-2954 (<http://www.journals.uchicago.edu/ICHE/>). The editorial offices are in Chicago, Illinois.

Editorial Office

Communications should be addressed to the Editor, *Infection Control and Hospital Epidemiology*, 1427 E. 60th St, Chicago, IL 60637-2954; (e-mail: iche@press.uchicago.edu); telephone: [773] 702-2448, fax: [773] 753-4247. Contributors should consult the Information for Authors, which is available at the ICHE Web site.

Advertising

Publication of an advertisement in *Infection Control and Hospital Epidemiology* does not imply endorsement of its claims by the Society for Healthcare Epidemiology of America, by the Editor, or by the University of Chicago. Correspondence regarding advertising should be addressed to the business office in Chicago (see above).

Permissions

The copyright code on the first page of an article in this journal indicates the copyright owner's consent that copies of the article may be made only for personal or internal use or for the personal or internal use of specific clients and provided that the copier pays the stated per-copy fee through the Copyright Clearance Center (CCC), 222 Rosewood Dr., Danvers, MA 01923. To request permission for other kinds of copying, such as copying for general distribution, for advertising or promotional purposes, for creating new collective works, or for resale, please write to the Permissions Department, University of Chicago Press, 1427 East 60th St., Chicago, IL 60637-2954. For articles in the public domain, permission to reprint should be obtained from the author.

Subscriptions

Subscription orders and correspondence should be addressed to the University of Chicago Press, P.O. Box 37005, Chicago, IL 60637-2954. Checks should be made out to the University of Chicago Press. All orders must be in US currency. Telephone: (8:00 A.M.–5:00 P.M. Central Standard Time, Monday–Friday) US and Canada toll free, (877) 705-1878; Rest of World, (773) 753-3347. Fax: US and Canada toll free, (877) 705-1879; Rest of World, (773) 753-0811. E-mail: subscriptions@press.uchicago.edu; Web site: <http://www.journals.uchicago.edu>.

Subscription rates (1 year) for *Infection Control and Hospital Epidemiology* (ICHE):

	Domestic	Foreign With Air Freight	Canadian
Institutions	350.00	399.00	389.50
Individuals	150.00	199.00	175.50
Fellows	55.00	104.00	73.85

Note: All rates in US dollars. All new subscriptions will begin with the January issue. All rates include postage. Canadian rates include 7% GST. ICHE single copies: institutions, \$30.00; individuals, \$14.00. Japanese subscription agent: Kinokuniya Company Ltd.

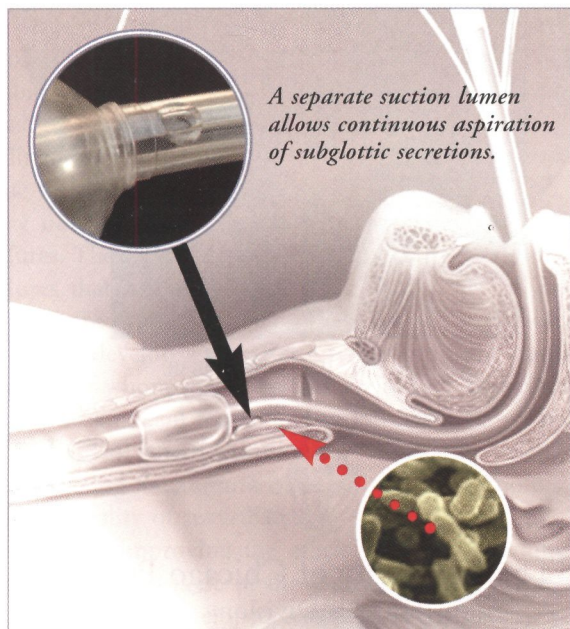
Postmaster: Send address changes to *Infection Control and Hospital Epidemiology*, University of Chicago Press, P.O. Box 37005, Chicago, IL 60637-2954.

Periodicals postage paid at Chicago, Illinois, and at an additional mailing office.

Published by the University of Chicago Press, Chicago, IL. © 2006 by The Society for Healthcare Epidemiology of America. All rights reserved. This publication is printed on acid-free paper.

ZAP

WAP[®]



Ventilator-associated pneumonia (VAP) costs lives and resources.

Clinical evidence demonstrates that continuous aspiration of subglottic secretions (CASS) reduces VAP. The *Mallinckrodt® Hi-Lo Evac®* ET tube is the only CASS tube on the market, and it's only available from Nellcor.

We invite you to learn more.

For more information, contact your Nellcor representative by calling 1-800-NELLCOR, or view our informative multi-media presentation at the web address listed below.

The Hi-Lo Evac ET tube has been clinically shown to reduce the incidence of ventilator-associated pneumonia (VAP), by up to 59%!



SEE THE MULTI-MEDIA PRESENTATION AT
WWW.ZAPVAP.COM

Clinical Infectious Diseases

Official publication of the Infectious
Diseases Society of America

Clinical Infectious Diseases (CID) publishes topical research and incisive commentaries from distinguished clinicians and scientists on the diagnosis and treatment of infectious diseases. Each issue contains clinically relevant articles of current interest in:

- Clinical Research
- Immune Mechanisms
- Medical Microbiology
- Epidemiology and Prevention
- Pathogenesis
- HIV/AIDS
- New Antimicrobial Therapies

CID Online

Read a sample issue, sign up for RSS feeds, register for e-TOC tables of contents alerts, and use *UpToDate*, the free "topic link" information service – all online at www.journals.uchicago.edu/CID.

To Subscribe:

Phone: (877) 705-1878 (US/Canada), or
(773) 753-3347 (International)

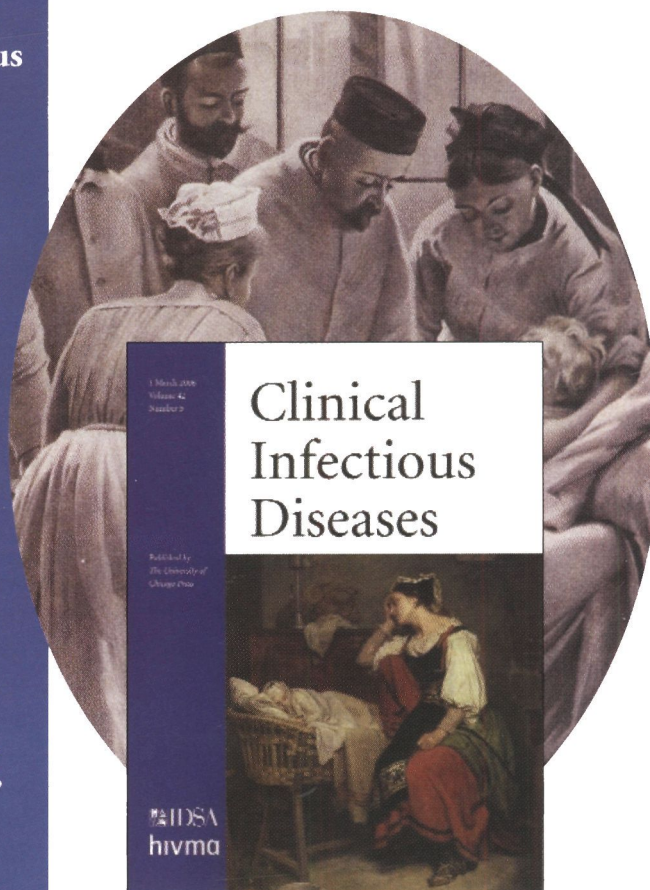
Fax: (877) 705-1879 (US/Canada), or
(773) 753-0811 (International)

Online: www.journals.uchicago.edu/CID

E-mail: subscriptions@press.uchicago.edu

Providing Timely
Information on Clinical
Topics and Infectious
Disease Research

Editor, Sherwood L. Gorbach
Tufts University School of Medicine



Semimonthly. ISSN: 1058-4838.



The University of Chicago Press
Journals Division
P. O. Box 37005, Chicago, IL 60637
www.journals.uchicago.edu