

Isotropic-turbulence-induced mass transfer across a severely contaminated water surface

H. Herlina^{1,†} and J. G. Wissink²

¹Institute for Hydromechanics, Karlsruhe Institute of Technology, Kaiserstr.12, 76131 Karlsruhe, Germany

²Department of Mechanical, Aerospace and Civil Engineering, Brunel University London, Kingston Lane, Uxbridge UB8 3PH, UK

(Received 22 July 2015; revised 6 November 2015; accepted 15 April 2016; first published online 24 May 2016)

Direct numerical simulations were performed to investigate the effect of severe contamination on interfacial gas transfer in the presence of isotropic turbulence diffusing from below. A no-slip boundary condition was employed at the interface to model the severe contamination effect. The influence of both Schmidt number (Sc) and turbulent Reynolds number (R_T) on the transfer velocity (K_L) was studied. In the range from $Sc = 2$ up to $Sc = 500$ it was found that $K_L \propto Sc^{-2/3}$, which is in agreement with predictions based on solid–liquid transport models, see e.g. Davies (1972, *Turbulence Phenomena*, Academic). For similar R_T , the transfer velocity was observed to reduce significantly compared with the free-slip conditions. The reduction becomes more pronounced with increasing Schmidt number. Similar to the observation for free-slip conditions made by Theofanous *et al.* (*Intl J. Heat Mass Transfer*, vol. 19 (6), 1976, pp. 613–624), the normalized K_L in the present no-slip case was also found to depend on $R_T^{-1/2}$ and $R_T^{-1/4}$ for small and large turbulent Reynolds numbers, respectively.

Key words: air/sea interactions, computational methods, turbulent mixing

1. Introduction

The present numerical work is motivated by the problem of gas transfer across severely contaminated air–water interfaces driven by isotropic turbulence diffusing from below. For low to moderate soluble atmospheric gases (e.g. oxygen, methane and carbon dioxide), the transfer velocity K_L into a body of water is controlled by hydrodynamic conditions at the liquid side which are affected significantly by the presence of surfactants.

Although the equations that describe fluid flow and gas transfer are well known, the limited thickness of the gas-saturated boundary layer (typically 10–1000 μm) has complicated efforts to understand the actual mechanisms that govern the gas transfer in a turbulent water environment. Early studies focused on developing empirical

† Email address for correspondence: herlina.herlina@kit.edu

equations (relating K_L to global parameters such as wind speed or stream velocity) and conceptual models. The most relevant models are briefly summarized below.

The surface renewal model of Higbie (1935) describes the interaction between gas transfer and turbulent eddies approaching the interface. Turbulence periodically brings up fresh (unsaturated) fluid from the bulk to replace saturated fluid at the surface. Due to molecular diffusion, this initially unsaturated fluid would then become increasingly saturated with atmospheric gases during a constant time interval (renewal time) after which it is transported back to the bulk. Danckwerts (1951) extended Higbie's model by allowing the renewal time to follow an exponential distribution, which resulted in the relationship $K_L \sim \sqrt{Dr}$, where D is the diffusion coefficient and r the surface renewal rate. In this surface renewal model the hydrodynamical effects are described implicitly by the renewal rate r , which needs to be determined experimentally. By assuming that the surface renewal rate is determined by the largest turbulent eddies in a flow, Fortescue & Pearson (1967) estimated r by u_{rms}/L_∞ , where u_{rms} is the root-mean-square (r.m.s.) of the turbulent fluctuations and L_∞ is the integral length scale of the turbulence. Hence, in this so-called large-eddy model K_L is given by $K_L \propto \sqrt{Du_{rms}/L_\infty}$. In the small-eddy model of Banerjee, Scott & Rhodes (1968) and Lamont & Scott (1970) it is assumed that small eddies determine the surface renewal rate and r is approximated by $(\epsilon/\nu)^{1/2}$, where ϵ is the turbulent dissipation rate near the surface and ν is the kinematic viscosity. The transfer velocity is then estimated by $K_L \propto \sqrt{D(\epsilon/\nu)^{1/2}}$. Alternatively, the large and small eddy models can be written in the form (Theofanous, Houze & Brumfield 1976)

$$K_L = c_1 u_\infty Sc^{-1/2} R_T^{-1/2} \quad (1.1)$$

and

$$K_L = c_2 u_\infty Sc^{-1/2} R_T^{-1/4}, \quad (1.2)$$

respectively, where $Sc = \nu/D$ is the Schmidt number and $R_T = 2L_\infty u_\infty/\nu$ is the turbulent Reynolds number, c_1 and c_2 are constants of proportionality. In this form, the only difference between the two models lies in the exponent of R_T . Theofanous *et al.* (1976) proposed two regimes, in which the large-eddy model is valid for low R_T and the small-eddy model is valid for high R_T , where the critical R_T is approximately 500. Another conceptual model is the surface divergence model, originating from the numerical investigation by McCready, Vassiliadou & Hanratty (1986). They showed that surface divergence plays an important role in interfacial mass transfer. Subsequent experimental and numerical studies (e.g. McKenna & McGillis 2004; Turney, Smith & Banerjee 2005; Magnaudet & Calmet 2006; Kermani *et al.* 2011; Herlina & Wissink 2014) confirmed that surface divergence provides a good measure for the transfer velocity, as surface conditions are implicitly taken into account. Recently, however, Turney & Banerjee (2013) found that the surface divergence model is not applicable when a portion of the near-surface motions hold small time scales.

The cleanliness of the water surface strongly influences the near-surface hydrodynamic conditions. A clean (mobile) interface is characterized by the absence of significant shear stresses, so that horizontal velocity fluctuations can persist up to the actual liquid surface. Vertical velocity fluctuations, however, are damped due to surface tension and gravity. With increasing amounts of surfactants (for example organic substances or chemical surfactants) greater tangential stresses occur and the turbulent eddies near the surface become progressively damped (see Davies 1972)

leading to a significant decrease in the transfer velocity K_L . Experiments in grid-stirred tanks showed that with a surface covered by monolayers a reduction in K_L up to 80% is observed compared with clean conditions (see, e.g., Asher & Pankow 1986; McKenna & McGillis 2004). The infrared images of Flack, Saylor & Smith (2001) and Lee & Saylor (2010), for buoyancy-driven mass transfer, show how the presence of surfactants dramatically changes the convective structures immediately beneath the surface. While in the clean surface case a net-like pattern was detected, in the contaminated case only weak relatively large-scale vortical structures were observed.

The presence of surfactants causes the surface elasticity (which is constant under clean conditions) to become a function of space and time. Direct numerical simulations (DNS) of the effect of surfactants on free-surface turbulent flow (Shen, Yue & Triantafyllou 2004) showed that even small concentrations of surfactants can significantly reduce the surface divergence as well as the associated up and downwellings near the surface. Further numerical investigations of the effect of surface contamination on gas/heat transfer across an approximately flat interface, include a hybrid DNS/large eddy simulation (LES) study of Hasegawa & Kasagi (2008) for $Sc = 1$ and 100, and DNS studies by Handler *et al.* (2003) for $Pr = 2$ and Khakpour, Shen & Yue (2011) for $Sc = 1-8$. As shown in the latter paper, the main parameter representing the severity of surface contamination is Ma/We , with

$$Ma = - \left. \frac{\partial \sigma}{\partial \gamma} \right|_{\gamma=1} \quad \text{and} \quad We = \frac{\rho V^2 L}{\sigma_0}, \quad (1.3a,b)$$

where γ is the surfactant concentration, normalized by its equilibrium (no fluid motion) value γ_0 , σ is the surface tension normalized by its equilibrium value σ_0 , ρ is the density and V , L are characteristic velocity and length scales, respectively. Using the gradients in the surfactant concentration to model the damping of the velocity fluctuations at the surface, the significant reduction in interfacial flux by the mechanism explained in Davies (1966) was reproduced. In the present paper we explore what happens to the gas transfer when the water surface is severely contaminated. For a severely contaminated surface, because of the very large Ma/We , horizontal velocities at the surface become exceedingly small so that the damping effect on the turbulence diffusing from below can be realistically modelled by a no-slip boundary condition.

For small Froude numbers, the two extreme conditions of perfectly clean and severely contaminated surfaces can be characterized by zero shear stress (free-slip condition) and zero velocity (no-slip condition), respectively. In the case of severe contamination, hydrodynamically the gas-liquid interface behaves like a solid-liquid interface. As a result, the exponential dependency of K_L on Sc , in contrast to the conceptual models above, changes from $-1/2$ for a clean interface to $-2/3$ for a severely contaminated surface (see Davies 1972; Jähne & Haussecker 1998; Hasegawa & Kasagi 2008). In agreement with the conceptual models above, for clean surfaces the dependency of K_L on $Sc^{-1/2}$ was confirmed in the parametric study of Herlina & Wissink (2014), who carried out DNS calculations in which gas transport equations for various Sc between 2 and 500 were solved using exactly the same background turbulent flow field. For the low to moderate R_T range, it was found that the transfer velocity was well represented by (1.1), though also indications were found that at higher R_T smaller eddies tend to become more important. It is uncertain, however, whether the large (1.1) and the small eddy (1.2) models would also be applicable to describe gas transfer across contaminated surfaces because of changes in the hydrodynamic interaction between the surface and the turbulence from below.

As mentioned above, the DNS calculations presented in this paper investigate the special case where the surface contamination is so severe that any motion of the surface water is fully suppressed. Hence, the focus is on the effect of no-slip interfacial conditions on the hydrodynamics near the interface and the associated gas transfer across it. The aim of this paper is to provide high-fidelity data for a wide range of Schmidt numbers ranging from 2 to 500 using an identical background turbulent flow and surface boundary conditions, allowing an unbiased parametric study on how K_L is affected by Sc , which is extremely difficult, if not impossible, to achieve in laboratory experiments. As far as the authors are aware, these are the first simulations of gas transfer across a (severely contaminated) no-slip interface driven by isotropic turbulence diffusing from below, in which the intricate details of scalar convection–diffusion for large, realistic Schmidt numbers up to $Sc = 500$ (relevant for the transfer of oxygen in water) near the surface are fully resolved. Results are produced for high Schmidt numbers and ranges of turbulent Reynolds numbers where the near-surface flow is either dominated by large or small eddies. The data obtained for these ranges of R_T allowed a validation of Theofanous *et al.*'s dual regime model which relates relatively easy-to-measure parameters to the transfer velocity.

2. Numerical aspects

The DNS were performed using a fourth-order-accurate spatial discretization of the incompressible Navier–Stokes equations (see Wissink 2004) combined with the second-order Adams–Bashforth method for the time integration. The scalar transport equations were solved using the fifth-order accurate weighted essentially non-oscillatory (WENO) scheme of Liu, Osher & Chan (1994) for the convection combined with a fourth-order accurate central discretization of the diffusion. The scalar equations were integrated in time by employing a three-stage Runge–Kutta method. To deal with the very low scalar diffusivity of the dissolved gases, a dual-meshing strategy was employed where the scalars were solved on a finer mesh than the flow field. The code was parallelized by dividing the computational domain into a number of blocks of equal size. Each block was assigned to its own processing core to obtain a near-optimal load-balancing. Communication between blocks was achieved using the standard message passing interface (MPI) protocol. A more detailed description of the numerical method can be found in Kubrak *et al.* (2013) and Herlina & Wissink (2014).

As in Herlina & Wissink (2014) the set-up of the simulations was based on the experiments performed by Herlina & Jirka (2008) (hereafter HJ08). While in the previous simulations the water surface was assumed to be clean, here the hydrodynamic effect of a severely contaminated surface on the gas transfer for a range of Schmidt numbers and turbulence levels will be investigated. For that purpose a no-slip boundary condition for the velocity was employed at the top of the computational domain, shown in figure 1. Similarly to Herlina & Wissink (2014), the grid turbulence introduced at the bottom of the computational domain originated from a concurrently running LES of fully developed isotropic turbulence. At the sides of the computational domain periodic boundary conditions were employed to account for the much larger horizontal extent of the water tank used in the experiments.

The concentration c was non-dimensionalized using $c^* = (c - c_{b,0}) / (c_s - c_{b,0})$, where $c_{b,0}$ is the initial concentration in the bulk and c_s is the concentration at the surface which was assumed to be fully saturated at all times. This assumption is an idealized situation. In reality, contaminations may lead to local patches where the water at the

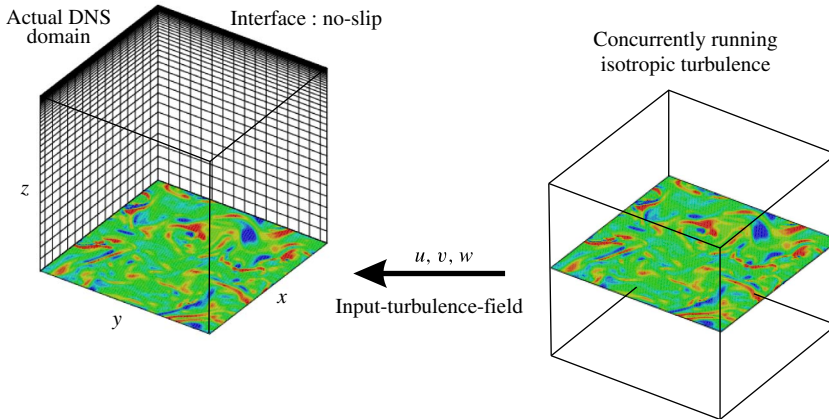


FIGURE 1. (Colour online) Schematic of the computational domains.

Run	Sc	Domain	Mesh	f_{RS}	t_d	R_T	Δt
NS1	16, 100	$5L \times 5L \times 5L$	$128 \times 128 \times 300$	2	$30L/U$	48–104	$120L/U$
NS2	2–32	$5L \times 5L \times 3L$	$128 \times 128 \times 212$	1	$60L/U$	87–133	$170L/U$
NS3	16, 32	$20L \times 20L \times 5L$	$512 \times 512 \times 300$	1	$10L/U$	436–865	$100L/U$
NS4	16, 500	$5L \times 5L \times 3L$	$128 \times 128 \times 212$	5	$60L/U$	131	—

TABLE 1. Overview of the simulations, where f_{RS} is the refinement factor for a scalar mesh. For NS1–NS3 a range of turbulent Reynolds numbers R_T were obtained by using a running average over $\Delta t L/U$. In NS4, R_T is calculated using the average over all time steps.

surface is not fully saturated. At the bottom of the computational domain a zero scalar flux was enforced. Convection–diffusion of the scalar distribution was started after allowing sufficient time for the turbulence introduced at the bottom to reach a fully developed state in the entire DNS domain. The initial scalar distribution was given by

$$c(z_s, t) = 1 - \operatorname{erf} \left(\frac{z_s}{\sqrt{4Dt_d}} \right), \tag{2.1}$$

in which z_s is the distance from the interface and t_d is the diffusion time given in table 1. The simulations, listed in table 1, were carried out at a bulk Reynolds number of $Re = UL/\nu = 600$, where $L = 1$ cm is the characteristic length, $U = 6$ cm s⁻¹ is the characteristic velocity and $\nu = 10^{-2}$ cm² s⁻¹ is the kinematic viscosity of water at 20°C. The turbulent Reynolds number is defined by

$$R_T = \frac{u_\infty L_\infty}{\nu}, \tag{2.2}$$

where u_∞ is the horizontally and time-averaged r.m.s. of u in the plane $z = z_0$, with z_0 chosen so that $L_{11}(z_0) = \max_z \{L_{11}(z)\}$, and $L_\infty = L_{11}(z_0)$. Note that the integral length

Run	$R_{T,max}$	η (L)	Δz (L)	Δz_R (L)	$\overline{\Delta}/\pi$ (L)	$\overline{\Delta}_R/\pi$ (L)	L_B (L)		$\delta_{e,min}$ (L)	
							Sc_{min}	Sc_{max}	Sc_{min}	Sc_{max}
NS1	104	0.0964	0.0012	0.0006	0.0039	0.0019	0.0241	0.0096	0.1052	0.0544
NS2	133	0.0528	0.0012	—	0.0039	—	0.0373	0.0093	0.1305	0.0461
NS3	865	0.0587	0.0012	—	0.0039	—	0.0147	0.0104	0.0881	0.0691
NS4	131	0.0545	0.0012	0.0002	0.0039	0.0008	0.0136	0.0024	0.0555	0.0162

TABLE 2. Comparison of the near-surface vertical grid spacings with the Batchelor scale and boundary layer thicknesses, where Δz and Δz_R are the vertical sizes at the surface of the base-grid and the refined grid, respectively. Table 1 lists Sc_{min} and Sc_{max} .

scale L_{11} is determined by

$$L_{11}(z) = \int_0^{L_x/2} R_{11}(r, z) dr \quad \text{with} \quad R_{11}(r, z) = \frac{\int_{x=0}^{L_x/2} \int_{y=0}^{L_y} u'(x, y, z) u'(x+r, y, z) dy dx}{\int_{x=0}^{L_x/2} \int_{y=0}^{L_y} u'^2(x, y, z) dy dx}, \quad (2.3)$$

where $L_x \times L_y$ is the size of the horizontal plane and u' is the fluctuating u velocity. For NS1–NS3 various R_T are obtained by using a running average with a (large) window size of $\Delta t L/U$ and the values supplied in table 1 correspond to the minimum and maximum R_T . Because NS4 ran for a relatively short time, only one value for R_T was obtained.

The grid point distribution employed in the present simulations was based on our experience gained in the simulations presented in Herlina & Wissink (2014) where rigorous grid refinement tests were carried out with a free-slip boundary condition at the surface (which is more demanding on the resolution of the concentration boundary layer than a no-slip boundary condition). Hence, the present grid resolution was deemed to be sufficiently fine to resolve all important scales. This is further evidenced in table 2, where it is shown that in all cases the grid spacings used in the upper part of the computational domain easily fulfill the Grötzbach criterion that: (i) the vertical grid resolution near the surface is finer than the Batchelor scale and (ii) the geometric mean of the grid cells ($\overline{\Delta} = \sqrt[3]{\Delta x \times \Delta y \times \Delta z}$) in the upper part of the computational domain fulfills

$$\overline{\Delta} \leq \pi L_B \quad \text{for} \quad Sc \geq 1, \quad (2.4)$$

where the Batchelor scale is defined by $L_B = \eta Sc^{-0.5}$ in which η is the Kolmogorov scale, which can be approximated using $\eta = 2L_\infty R_T^{-3/4}$ (see Brumley & Jirka 1987; Herlina & Wissink 2014).

3. Results

3.1. Near-surface turbulence

Figure 2 shows the r.m.s. of the u and w velocities adjacent to the surface and contrasts (a) the present no-slip case to (b) the free-slip case of Herlina & Wissink

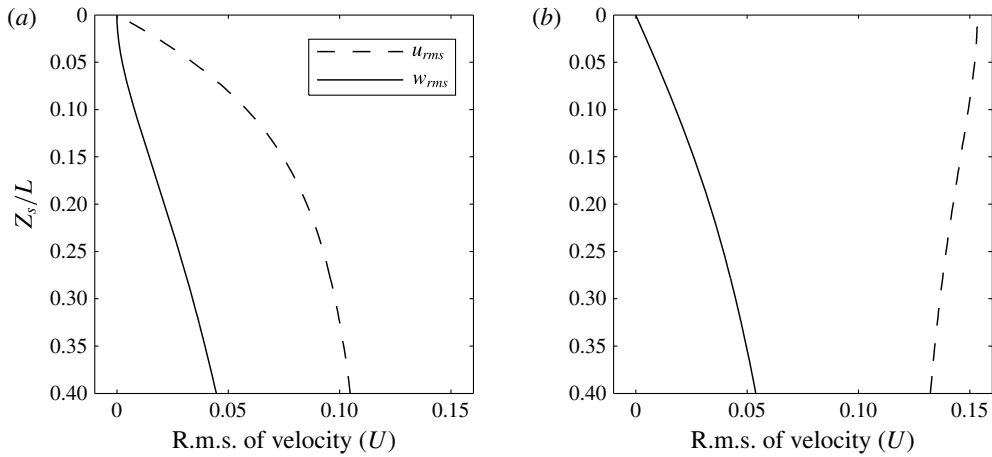


FIGURE 2. Comparison of u_{rms} and w_{rms} at $R_T \approx 500$ close to the surface: (a) no-slip (case NS3); (b) free-slip (DNS results of HW14).

(2014) (hereafter HW14). While the w_{rms} profiles in both cases are similar for all z_s/L (corresponding to the distance to the surface), the normal gradients of w_{rms} at the surface differ. For the no-slip case it can be seen that $\partial w_{rms}/\partial z$ is zero, while in the free-slip case it is non-zero. This is expected to have a large impact on the gas transfer velocity. The u_{rms} profiles differ significantly, especially close to the surface, where u_{rms} gradually reduces to zero for the no-slip case while for the free-slip case it reaches a local maximum with a zero normal gradient at the surface. Comparison of the near-surface velocity fluctuations between clean ($Ma/We = 0$) and contaminated ($Ma/We > 0$) surface conditions was reported in the DNS of Handler *et al.* (2003), Hasegawa & Kasagi (2008), Khakpour *et al.* (2011). They observed gradually increasing reductions with increasing contamination.

Because of the application of a no-slip boundary condition at the surface, any models for K_L that incorporate information that is directly obtained at the interface, such as integral length scales, velocity r.m.s. or the surface divergence,

$$\beta_i = \left(\frac{\partial u}{\partial x} + \frac{\partial v}{\partial y} \right) \Big|_i, \tag{3.1}$$

where the subscript i identifies the interface, will break down. Instead, models need to be based on information from the bulk, such as L_∞ and u_∞ defined in § 2. As mentioned above, the surface divergence β_i is strictly zero at the no-slip surface. To be able to qualitatively compare structures close to the surface, for the no-slip cases the horizontal divergence β_g is calculated at the interface-nearest grid plane. Snapshots of β_g contours are shown in figure 3 to illustrate the evolution of the near-surface horizontal divergence. Even though the velocity very close to the surface is damped significantly because of the no-slip boundary condition, similar structures were obtained as in the (clean interface) surface divergence plot at $R_T = 195$, which is well within the large-eddy-dominated gas-transfer regime, shown in HW14. Typical structures that can be found at a higher R_T of about 505 can be seen in figure 4. In contrast to the results obtained at the lower R_T , here the structures are generally more energetic, smaller in size and more irregular. Also, relatively large, almost

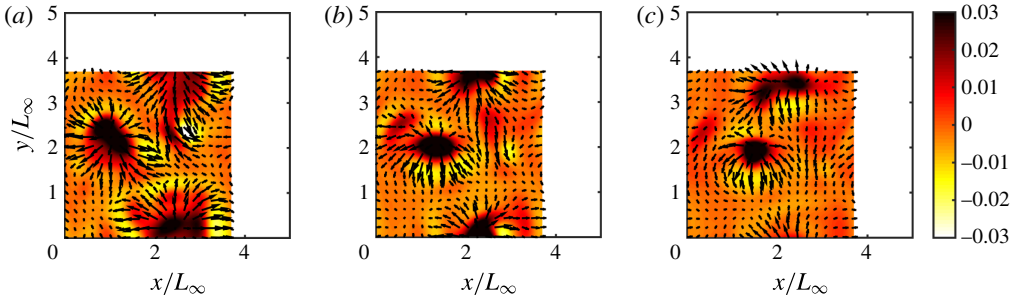


FIGURE 3. (Colour online) Contours of the horizontal divergence $\beta_g \times L_\infty / u_\infty$ from NS1 for $t = 94 L/U$ (a), $104 L/U$ (b), $114 L/U$ (c), and $R_T \approx 83$ in the first grid plane underneath the surface. Horizontal velocity vectors are shown for every seventh grid point.

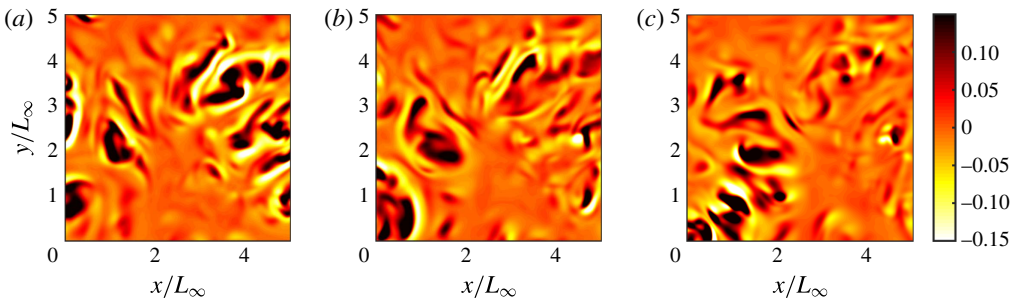


FIGURE 4. (Colour online) Contours of the horizontal divergence $\beta_g \times L_\infty / u_\infty$ from NS3 for $t = 124 L/U$ (a), $134 L/U$ (b), $144 L/U$ (c), and $R_T \approx 505$ in the first grid plane underneath the surface.

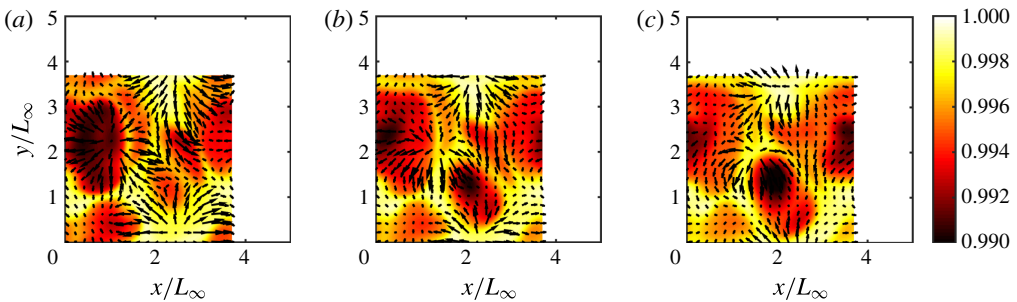


FIGURE 5. (Colour online) Contours of the concentration $Sc = 16$ from NS1 for $t = 94 L/U$ (a), $104 L/U$ (b), $114 L/U$ (c), and $R_T \approx 83$ in the first grid plane underneath the surface. Horizontal velocity vectors are shown for every seventh grid point.

divergence-free regions were found to separate areas with high (positive and/or negative) divergence. The structures seen can be regarded as the foot print of the turbulence diffusing from below.

In contrast to the free-slip case of HW14, where strong upwelling regions near the surface were observed to correlate with low gas-saturated regions, in the present no-slip case low-gas-saturated regions often do not coincide with the centre of the upwelling region (clearly seen in figure 5*b,c*). These shifts in location in the no-slip

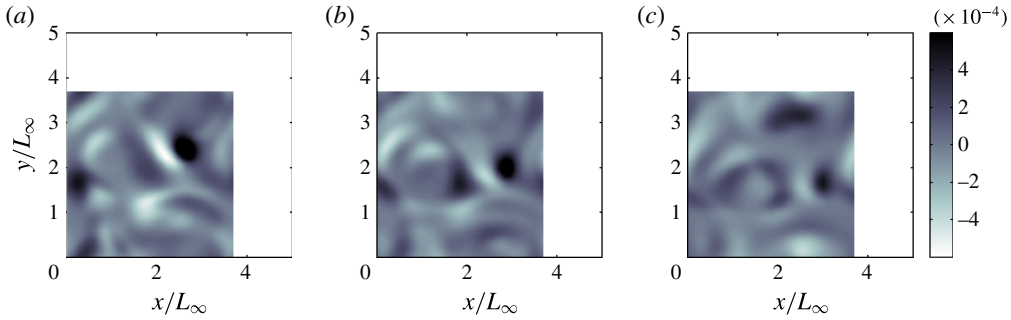


FIGURE 6. (Colour online) Contours of the z vorticity, $\omega_z \times L/U$ from NS1 for $t = 94 L/U$ (a), $104 L/U$ (b), $114 L/U$ (c), and $R_T \approx 83$ in the first grid plane underneath the surface.

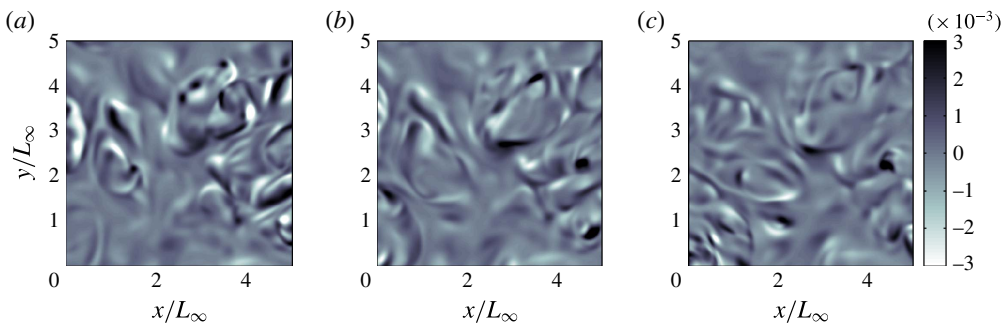


FIGURE 7. (Colour online) Contours of $\omega_z \times L/U$ from NS3 for $t = 124 L/U$ (a), $134 L/U$ (b), $144 L/U$ (c), and $R_T \approx 505$ in the first grid plane underneath the surface.

case are caused by the occurrence of instantaneous shear flow adjacent to the surface, resulting in upwellings and low-gas-saturated regions to move horizontally at different speeds. The absence of such shifts in the free-slip case is explained by the absence of near-surface shear.

Figures 6 and 7 show contours of the z vorticity, ω_z in the first grid plane underneath the surface. For the low R_T in simulation NS1, large near-surface structures are obtained, while for the higher R_T in NS3, a much more intricate pattern of small-scale structures is observed. This very nicely illustrates the dominance of large eddies at low R_T in NS1 and small eddies at high R_T in NS3.

In figure 8, a comparison of the cumulative spectra of the energy in the vertical velocity w in the first grid plane underneath the surface for $R_T = 55, 482, 831$ is shown. For $R_T = 55$ about 85% of the energy is found in length scales larger than L_∞ , while for $R_T = 831$ only 25% of the energy is present at such large length scales.

In figure 9(a,b) this change in the energy distribution across the scales is further illustrated by the size of the three-dimensional coherent vortical structures found in NS1 and NS3, respectively. The structures are identified by isosurfaces of λ_2 , corresponding to the second eigenvalue of the sum of the squares of the symmetric and antisymmetric parts of the velocity gradient tensor (see Jeong & Hussain 1995). To allow a direct comparison between the cases NS1 and NS3, λ_2 was normalized using u_∞ and L_∞ and in both simulations a value of $\lambda_2 = -100$ was chosen to plot the isosurface. In the lower part of the computational domain of both snapshots the

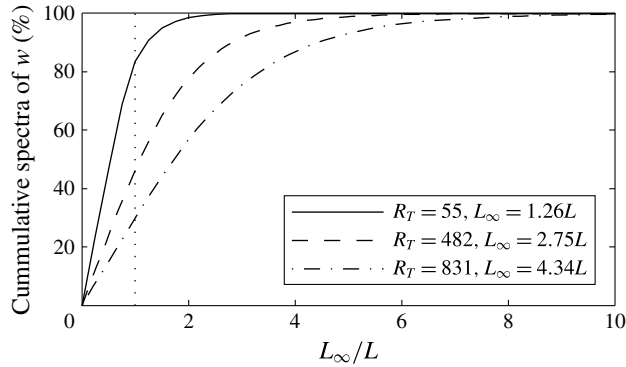


FIGURE 8. Cumulative energy spectra of w .

vortical structures found are typical for isotropic turbulent flow. Jimenez *et al.* (1993) showed that the diameter of these longitudinal structures scales with the Kolmogorov length η and their length is on the order of the size of the computational box. The isosurfaces show that the intensity of the vorticity in NS3 is significantly larger than in NS1. Also, the vortical structures in NS3 are much finer than in NS1. This is explained in figure 10, showing that η/L_∞ , plotted as a function of the distance to the surface z_s/L_∞ , is significantly smaller in NS3 than in NS1. In both cases η (and hence the vortex-tube diameter) can be seen to grow when approaching the surface. Only very close to the surface this growth ends and eventually η reduces with reducing z_s . For open channel flow, DNS calculations (e.g. Handler *et al.* 1999; Nagaosa & Handler 2003; Khakpour *et al.* 2011) have shown the effect of hairpin vortical structures on scalar transport. In the present case, as described above, only relatively small tube-like structures were found and, due to the shear that was induced by the no-slip boundary conditions, no clear instantaneous correlation could be established with the gas transfer.

3.2. Concentration and mass flux profiles

In figure 11 the mean concentration $\langle c \rangle$, the c_{rms} profiles and both the turbulent and diffusive fluxes obtained in NS3 at $Sc = 16$ are compared with the corresponding free-slip results from HW14. The results were obtained in the statistically quasi-steady regime. In all panes the vertical coordinate corresponds to the distance z_s to the surface, scaled by the concentration boundary layer thickness, δ_e , defined as the distance from the surface where the mean concentration first falls below $1/e$, where $e = 2.7172 \dots$ is Euler's number. It can be seen that, like the free-slip results (at $Sc = 16, 32$), also the no-slip results (at $Sc = 16, 100$) collapse quite well after scaling. For the mean concentrations plotted in figure 11(a), the scaled no-slip and free-slip results can be seen to collapse for small z_s/δ_e up to a value of about 1.2. For larger z_s/δ_e the reduced vertical mass flux in NS3 was found to lead to a significant reduction in $\langle c \rangle$.

A direct comparison of the no slip and free slip c_{rms} profiles for $R_T \approx 500$ in figure 11(b) shows that, with the possible exception of the region immediately below the interface, the concentration fluctuations in the no-slip case are significantly smaller than in the free-slip case, ranging from a reduction of about 20% at $z_s/\delta_e = 1$ to more than 50% below $z_s/\delta_e \approx 5$. While in the free-slip DNS of HW14 the c_{rms} peaked at

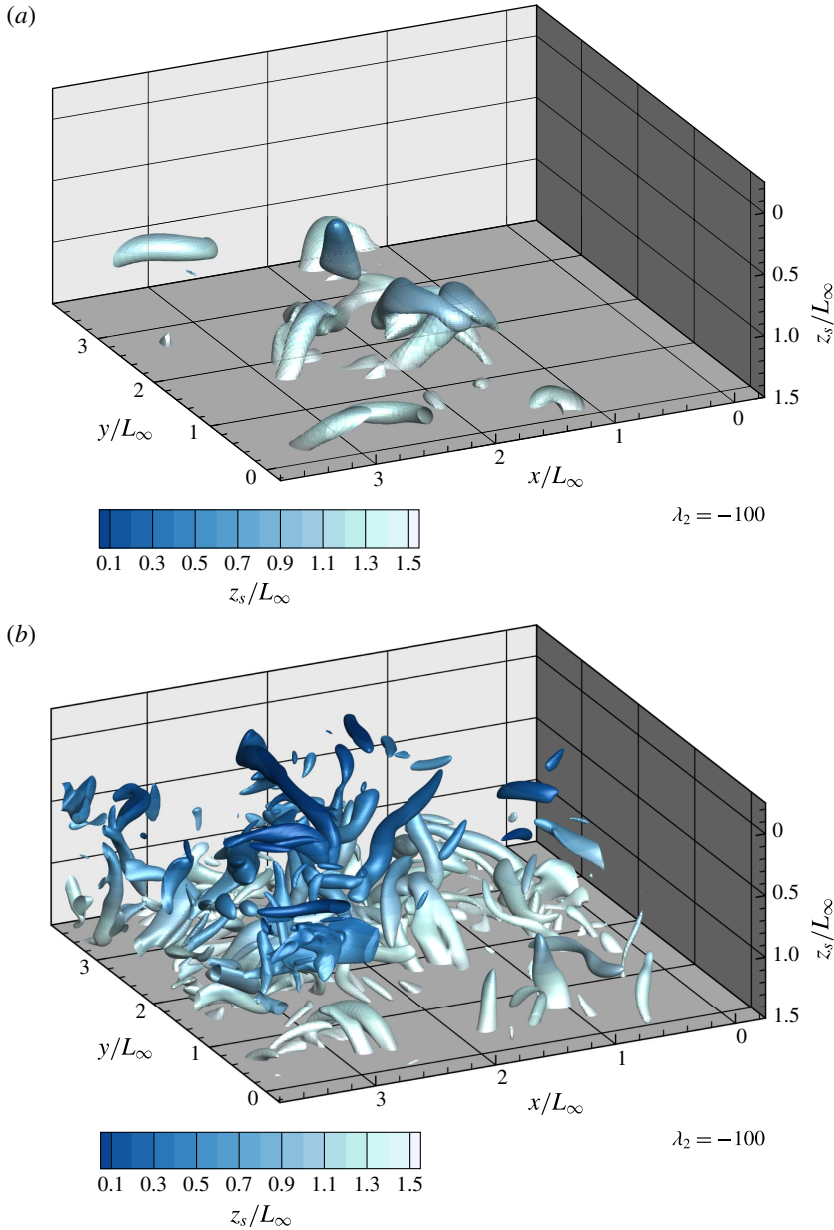


FIGURE 9. (Colour online) Vortical structures identified using the isosurface of λ_2 from (a) NS1 and (b) NS3 flooded with the value of z_s/L_∞ . In both simulations λ_2 has been made dimensionless using L_∞ and u_∞ .

about 0.3, in the present no-slip simulations the peak values were found to be reduced to ≈ 0.24 and are comparable with previous results varying between 0.15 and 0.35 (e.g. Atmane & George 2002; Magnaudet & Calmet 2006; Hasegawa & Kasagi 2008; Herlina & Jirka 2008; Khakpour *et al.* 2011).

The turbulent and diffusive mass fluxes shown in figure 11(c) are all scaled by the diffusive flux at the interface $-D(\partial c/\partial z)|_i$. It can be seen that as a result of the

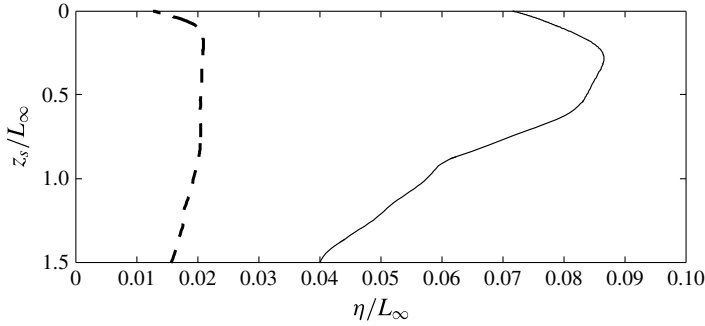


FIGURE 10. Horizontally averaged Kolmogorov length scales from the snapshots NS1 (—) and NS3 (---) shown in figure 9 determined using $\eta = (v^3/\epsilon)^{0.25}$.

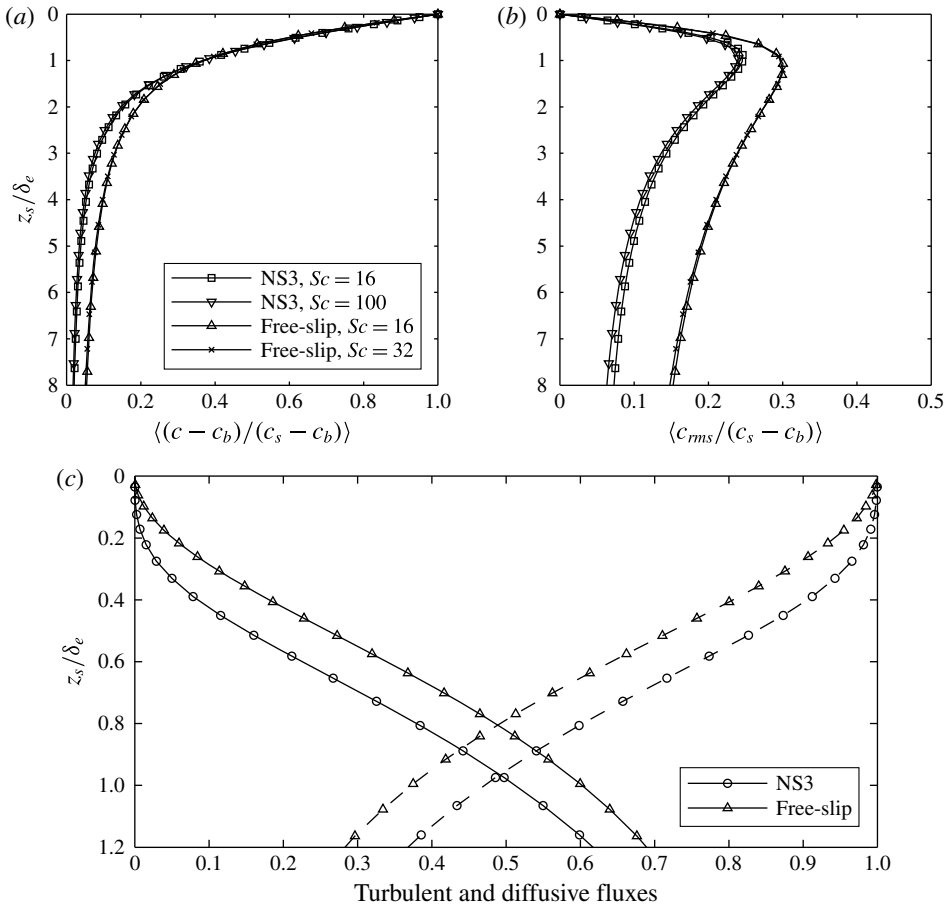


FIGURE 11. Simulation NS3 with $Sc = 16$, comparison of (a) mean concentration profiles, (b) c_{rms} and (c) mass fluxes $\langle c'w' \rangle / (-D(\partial c / \partial z)|_i)$ (—) and $-D(\partial c / \partial z) / (-D(\partial c / \partial z)|_i)$ (---), with free-slip results from HW14.

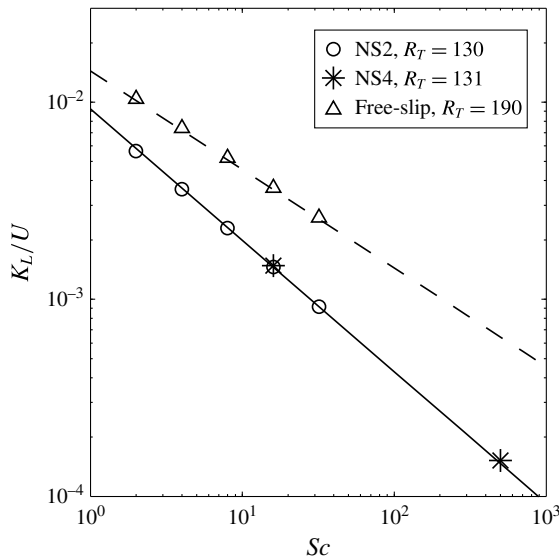


FIGURE 12. Variation of K_L/U with Sc and surface conditions. The dashed and solid lines represent the slopes $Sc^{-1/2}$ and $Sc^{-2/3}$, respectively.

no-slip boundary condition the thickness of the diffusion-dominated region increases significantly so that the diffusive and turbulent mass fluxes balance at $z_s/\delta_e \approx 0.97$ compared to $z_s/\delta_e \approx 0.80$ for the corresponding free-slip case. This thickening of the diffusion-dominated region is likely to lead to a significant reduction in the gas transfer velocity $K_L = D(\partial c/\partial z)|_i/(c_s - c_b)$, where c_b is the concentration in the bulk.

3.3. Significant reduction of K_L

Figure 12 shows the variation of K_L/U with Sc for the no-slip simulations NS2, NS4 and their free-slip counterpart obtained at a similar R_T . Compared with the cases with free-slip boundary conditions at the surface, the transfer velocity reduces significantly when using no-slip boundary conditions. Assuming that the transfer velocity scales with the Schmidt number according to the power law $K_L \propto Sc^n$, Davies (1972) and Jähne & Haussecker (1998) have shown that the power n changes from $-1/2$ for a mobile (clean) interface to $-2/3$ for a solid-wall (severely contaminated) interface. This scaling is confirmed in figure 12 where the interpolating line of the free-slip data points has a slope of $-1/2$, while for the no-slip cases, the slope obtained for the range between $Sc = 2$ and $Sc = 500$ was $-2/3$.

Figure 13(a,b) shows the variation of $K_L Sc^{-n}/u_\infty$ with R_T for the free-slip and no-slip cases, respectively. In the free slip cases, discussed in HW14, all results are located on one line with a slope of $-1/2$ (figure 13a), showing that for the R_T considered here, the effect of turbulence on K_L is dominated by large structures and is best described by the large eddy model (1.1). A constant of proportionality of $c_1 = 1.6$ was found to provide the best fit for the data from HW14. In most no-slip simulations (figure 13b), because the turbulent Reynolds number varied significantly in time, a moving average was applied with an interval size of Δt (see table 1), resulting in a multiple data points for each of the cases NS1, NS2, NS3. It can be seen that the slope obtained in NS1 and NS2 matches that found in the free-slip case, indicating that also in the no-slip case for lower R_T large turbulent structures tend to dominate the gas transfer process.

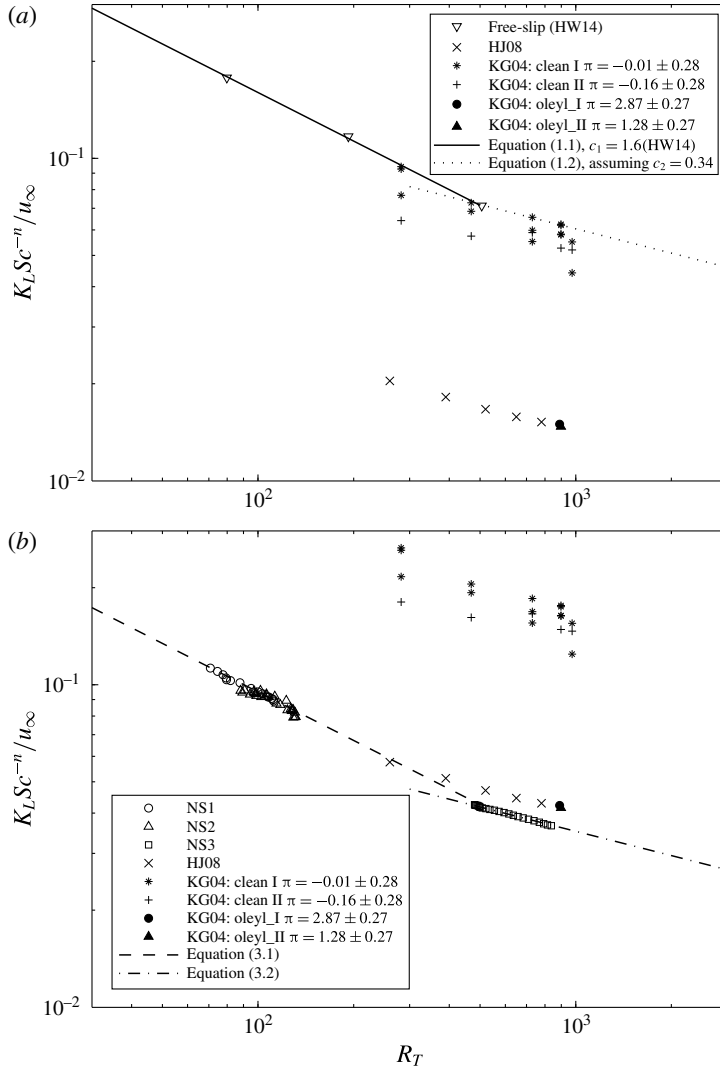


FIGURE 13. Variation of normalized transfer velocity, $K_L Sc^{-n} / u_{\infty}$, with R_T and surface conditions. The free-slip DNS data of HW14 and the no-slip cases NS1, NS2, NS3 (with a range of R_T , see table 1) are shown in (a) and (b), respectively. The experimental data of HJ08 and KG04 are included in both figures: while in (a) they are plotted using $n = -1/2$ (valid for clean surface conditions), in (b) $n = -2/3$, valid for no-slip conditions, is used.

For no-slip cases, the best fit relation (an adapted version of large eddy model) for R_T less than ≈ 500 was found to be

$$K_L = 0.95 u_{\infty} Sc^{-2/3} R_T^{-1/2}. \tag{3.2}$$

For the higher R_T in simulation NS3, the scaling of K_L with R_T changes when small eddies in the turbulent flow become more important. The adapted variant of the small eddy model for the no-slip case

$$K_L = 0.1975 u_{\infty} Sc^{-2/3} R_T^{-1/4} \tag{3.3}$$

was found to provide the best fit for larger R_T . The present data support the dual-regime concept for the prediction of K_L as suggested by Theofanous *et al.* (1976) with a similar critical R_T of ≈ 500 as found for clean surfaces. For severely contaminated surfaces, however, the power dependency of K_L on Sc in (1.1) needs to be changed from $Sc^{-1/2}$ to $Sc^{-2/3}$. Note that when using (1.1) and (3.2) to estimate K_L , at $Sc = 500$ a reduction of approximately 80% (a factor of 5) is obtained when comparing the no-slip to the free-slip case. This is in very good agreement with experimental results which suggest a reduction of up to 80% for severely contaminated interfaces (see, e.g., McKenna & McGillis 2004, hereafter KG04).

Also included in figure 13 are the K_L values obtained from the grid-stirred measurements of HJ08 and KG04. Note that in figure 13(a) clean surface conditions are assumed for the experiments and normalization of K_L is performed using multiplication by $Sc^{1/2}/u_\infty$. In figure 13(b), on the other hand, all experimental K_L are normalized using multiplication by $Sc^{2/3}/u_\infty$, which is valid for severely contaminated (no-slip) conditions. In the experiments of HJ08 the normalized K_L was found to be proportional to $R_T^{-1/4}$ which is similar to the small eddy model for clean conditions (1.2). However, as seen in figure 13(a), when assuming clean conditions the coefficient of proportionality c_2 was much lower than expected and the data of HJ08 were overpredicted. When assuming severely contaminated conditions at the surface and plotting HJ08 using $n = -2/3$ instead of $-1/2$ (see figure 13b), K_L was observed to be only somewhat larger than in the present no-slip results. Even though in the experiments the horizontal velocity at the surface was non-zero, the observed decrease of the fluctuations when approaching the surface does indicate a strong damping effect caused by the presence of dust and tracer particles. Apparently, this damping was so strong that the surface condition is much better approximated by no-slip than by free-slip boundary conditions. Unfortunately, the degree of contamination in the experiments of HJ08 was not quantified so that it remains unclear whether the strong damping was caused by a minor or major surface contamination.

KG04, on the other hand, provided a measure of the surface contamination based on the surface pressure π . They observed a rapid decrease in K_L between approximately $\pi = -0.16 \text{ mN m}^{-1}$ and 1.2 mN m^{-1} . A selection of their results (cleaned and evenly covered) is included in figure 13. For the cleaned surface case (assiduously cleaned tank with surface aspiration prior to each run) they measured π in the range of $-0.01 \pm 0.28 \text{ mN m}^{-1}$ and a significant scatter in K_L was observed for the same R_T . Figure 13(a) shows that in virtually most experimental results K_L was found to be less than what would be expected for truly clean conditions, indicating the difficulty in maintaining a perfectly clean surface condition. Even small changes in the degree of contamination ($\pm 0.28 \text{ mN m}^{-1}$) were found to lead to a significant change in K_L . For the surfactant-adsorbed surfaces of KG04 (with $\pi > 1.28 \text{ mN m}^{-1}$), the agreement with the clean DNS (1.2) deteriorates. Similar to HJ08, however, when a no-slip boundary condition was applied to model the severely contaminated surface and K_L was multiplied by $Sc^{2/3}/u_\infty$ to normalize the gas transfer results (figure 13b), the experimental results were found to be only somewhat larger than the no-slip DNS results (3.3).

As mentioned in § 1, laboratory (e.g. KG04; Turney *et al.* 2005) and numerical studies (e.g. Handler *et al.* 2003; Shen *et al.* 2004; Magnaudet & Calmet 2006; Khakpour *et al.* 2011) have confirmed that the surface divergence is a good measure for the transfer velocity as the surface condition is implicitly taken into account. In their DNS of open-channel flow performed at a fixed Weber number of $We = 10$, Shen *et al.* (2004) found that the surface divergence at clean conditions (with a

Marangoni number of $Ma = 0$) reduces dramatically in the presence of even a small amount of contamination ($Ma \approx 0.005$). For $Ma > 0.1$ already the surface divergence was found to be reduced by a factor of 10. All of this suggests that the effect on K_L of even a moderate amount of surfactants is better modelled by no-slip than by free-slip surface boundary conditions. Of course, a detailed investigation of the effect of Ma/We on the (for example) power dependency of K_L on Sc is interesting but beyond the scope of this paper. To summarize, the present paper provides lower limits for the interfacial gas transfer by determining the effects of severe surface contamination. Upper limits are derived from the clean surface results presented in HW14. Figure 13(a,b) illustrate how the numerical results obtained under clean and severely contaminated conditions can be used to obtain a rough estimation of the degree of contamination in experiments.

4. Conclusions

DNS of gas transfer across severely contaminated water surfaces have been performed for Schmidt numbers ranging from $Sc = 2$ up to 500 and turbulent Reynolds numbers from $R_T = 43$ to 865. The hydrodynamical effects of the severe contamination were modelled using a no-slip boundary condition at the surface, while any other effects were neglected.

The results for the low-to-moderate R_T were compared with the contamination-free results obtained using a free-slip surface (see HW14). As shown by Davies (1972), Jähne & Haussecker (1998), the power n in $K_L \propto Sc^n$ was found to change from $n = -1/2$ for the free-slip case to $n = -2/3$ for the no-slip case. Also, significant reductions in the concentration fluctuations close to the interface were obtained while the gas-transfer velocity at $Sc = 500$ was reduced by 80%. The present DNS established lower limits for interfacial gas transfer across flat contaminated surfaces that are valid for ranges of turbulent Reynolds numbers across both the large-eddy-dominated and the small-eddy-dominated regimes. Upper limits for the interfacial gas transfer (clean flat interface) in the large-eddy-dominated regime were established using data generated in HW14.

For small R_T , turbulent structures in the near-surface region were found to be all relatively large while for R_T larger than ≈ 500 the size of the structures became much more varied. Small irregular structures were found to be separated by large areas of little activity. For increasing R_T , shifts in the energy distribution from large to smaller length scales were observed in cumulative spectra of the near-surface vertical velocity. The 3D vortical structures in the upper part of the computational domain at high R_T were found to be much finer than at low R_T . These observations clearly illustrate the dominance of large eddies at low R_T and small eddies at high R_T , which is confirmed further by the change in the power dependency of $K_L Sc^{2/3}/u_\infty$ on R_T . Similar to the dual-regime concept of Theofanous *et al.* (1976) for the free-slip case, also in the no-slip case the normalized K_L/u_∞ was found to scale with $R_T^{-1/2}$ and $R_T^{-1/4}$ for the large- and small-scale-dominated gas transfer, respectively.

Acknowledgements

This research was funded by the German Research Foundation (DFG HE5609/1-2 and DFG UH242/6-1). The additional funding by the Helmholtz Water Network is greatly appreciated. We would also like to thank the steering committee of the Super Computing Facilities in Bavaria (HLRB) for granting computing time on SuperMUC at the Leibniz Computing Centre (LRZ) in Munich.

REFERENCES

- ASHER, W. E. & PANKOW, J. F. 1986 The interaction of mechanically generated turbulence and interfacial films with a liquid phase controlled gas/liquid transport process. *Tellus* **38B**, 305–318.
- ATMANE, M. A. & GEORGE, J. 2002 Gas transfer across a zero-shear surface: a local approach. In *Gas Transfer at Water Surfaces*, Geophysical Monograph Series 127, pp. 255–259. Wiley.
- BANERJEE, S., SCOTT, D. S. & RHODES, E. 1968 Mass transfer to falling wavy liquid films in turbulent flow. *Ind. Engng Chem. Fundam.* **7** (1), 22–27.
- BRUMLEY, B. H. & JIRKA, G. H. 1987 Near-surface turbulence in a grid-stirred tank. *J. Fluid Mech.* **183**, 235–263.
- DANCKWERTS, P. V. 1951 Significance of liquid-film coefficients in gas absorption. *Ind. Engng Chem. Fundam.* **43** (6), 1460–1467.
- DAVIES, J. T. 1966 The effect of surface films in damping eddies at a free surface of a turbulent liquid. *Proc. R. Soc. Lond. A* **1423**, 515–526.
- DAVIES, J. T. 1972 *Turbulence Phenomena*. Academic.
- FLACK, K. A., SAYLOR, J. R. & SMITH, G. B. 2001 Near-surface turbulence for evaporative convection at an air/water interface. *Phys. Fluids* **13** (11), 3338–3345.
- FORTESCUE, G. E. & PEARSON, J. R. 1967 On gas absorption into a turbulent liquid. *Chem. Engng Sci.* **22** (9), 1163–1176.
- HANDLER, R. A., LEIGHTON, R. I., SMITH, G. B. & NAGAOSA, R. 2003 Surfactant effects on passive scalar transport in a fully developed turbulent flow. *Intl J. Heat Mass Transfer* **46** (12), 2219–2238.
- HANDLER, R. A., SAYLOR, J. R., LEIGHTON, R. I. & ROVELSTAD, A. L. 1999 Transport of a passive scalar at a shear-free boundary in fully turbulent open channel flow. *Phys. Fluids* **11** (9), 2607–2625.
- HASEGAWA, Y. & KASAGI, N. 2008 Systematic analysis of high Schmidt number turbulent mass transfer across clean, contaminated and solid interfaces. *Intl J. Heat Fluid Flow* **29** (3), 765–773.
- HERLINA & JIRKA, G. H. 2008 Experiments on gas transfer at the air–water interface induced by oscillating grid turbulence. *J. Fluid Mech.* **594**, 183–208.
- HERLINA, H. & WISSINK, J. G. 2014 Direct numerical simulation of turbulent scalar transport across a flat surface. *J. Fluid Mech.* **744**, 217–249.
- HIGBIE, R. 1935 The rate of absorption of a pure gas into a still liquid during short periods of exposure. *Trans. Am. Inst. Chem. Engng* **31**, 365–389.
- JÄHNE, B. & HAUSSECKER, H. 1998 Air–water gas exchange. *Annu. Rev. Fluid Mech.* **30**, 443–468.
- JEONG, J. & HUSSAIN, F. 1995 On the identification of a vortex. *J. Fluid Mech.* **285**, 69–94.
- JIMENEZ, J., WRAY, A. A., SAFFMAN, P. G. & ROGALLO, R. S. 1993 The structure of intense vorticity in isotropic turbulence. *J. Fluid Mech.* **255**, 65–90.
- KERMANI, A., KHAKPOUR, H. R., SHEN, L. & IGUSA, T. 2011 Statistics of surface renewal of passive scalars in free-surface turbulence. *J. Fluid Mech.* **678**, 379–416.
- KHAKPOUR, H. R., SHEN, L. & YUE, D. K. P. 2011 Transport of passive scalar in turbulent shear flow under a clean or surfactant-contaminated free surface. *J. Fluid Mech.* **670**, 527–557.
- KUBRAK, B., HERLINA, H., GREVE, F. & WISSINK, J. G. 2013 Low-diffusivity scalar transport using a WENO scheme and dual meshing. *J. Comput. Phys.* **240**, 158–173.
- LAMONT, J. C. & SCOTT, D. S. 1970 An eddy cell model of mass transfer into surface of a turbulent liquid. *J. Am. Inst. Chem. Engng* **16** (4), 513–519.
- LEE, R. J. & SAYLOR, J. R. 2010 The effect of a surfactant monolayer on oxygen transfer across an air/water interface during mixed convection. *Intl J. Heat Mass Transfer* **53**, 3405–3413.
- LIU, X., OSHER, S. & CHAN, T. 1994 Weighted essentially non-oscillatory schemes. *J. Comput. Phys.* **115** (1), 200–212.
- MAGNAUDET, J. & CALMET, I. 2006 Turbulent mass transfer through a flat shear-free surface. *J. Fluid Mech.* **553**, 155–185.
- MCCREARY, M. J., VASSILIADOU, E. & HANRATTY, T. J. 1986 Computer-simulation of turbulent mass-transfer at a mobile interface. *AIChE J.* **32** (7), 1108–1115.

- MCKENNA, S. P. & MCGILLIS, W. R. 2004 The role of free-surface turbulence and surfactants in air–water gas transfer. *Intl J. Heat Mass Transfer* **47** (3), 539–553.
- NAGAOSA, R. & HANDLER, R. A. 2003 Statistical analysis of coherent vortices near a free surface in a fully developed turbulence. *Phys. Fluids* **15** (2), 375–394.
- SHEN, L., YUE, D. K. P. & TRIANTAFYLLOU, G. S. 2004 Effect of surfactants on free-surface turbulent flows. *J. Fluid Mech.* **506**, 79–115.
- THEOFANOUS, T. G., HOUZE, R. N. & BRUMFIELD, L. K. 1976 Turbulent mass transfer at free, gas liquid interfaces with applications to open channel, bubble and jet flows. *Intl J. Heat Mass Transfer* **19** (6), 613–624.
- TURNNEY, D. E. & BANERJEE, S. 2013 Air–water gas transfer and near-surface motions. *J. Fluid Mech.* **733**, 588–624.
- TURNNEY, D. E., SMITH, W. C. & BANERJEE, S. 2005 A measure of near-surface fluid motions that predicts air–water gas transfer in a wide range of conditions. *Geophys. Res. Lett.* **32**, L04607.
- WISSINK, J. G. 2004 On unconditional conservation of kinetic energy by finite-difference discretisations of the linear and non-linear convection equation. *Comput. Fluids* **33**, 315–343.