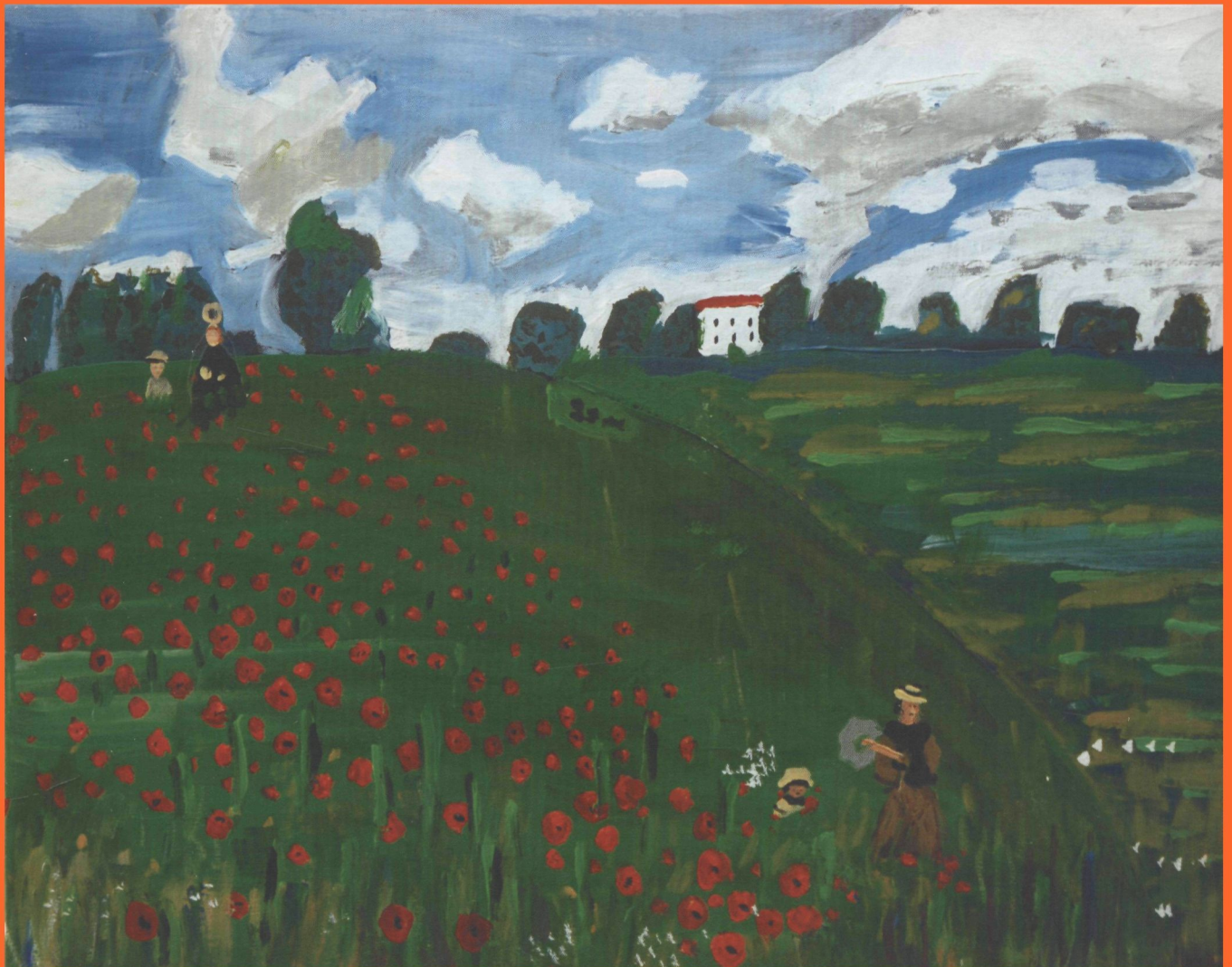


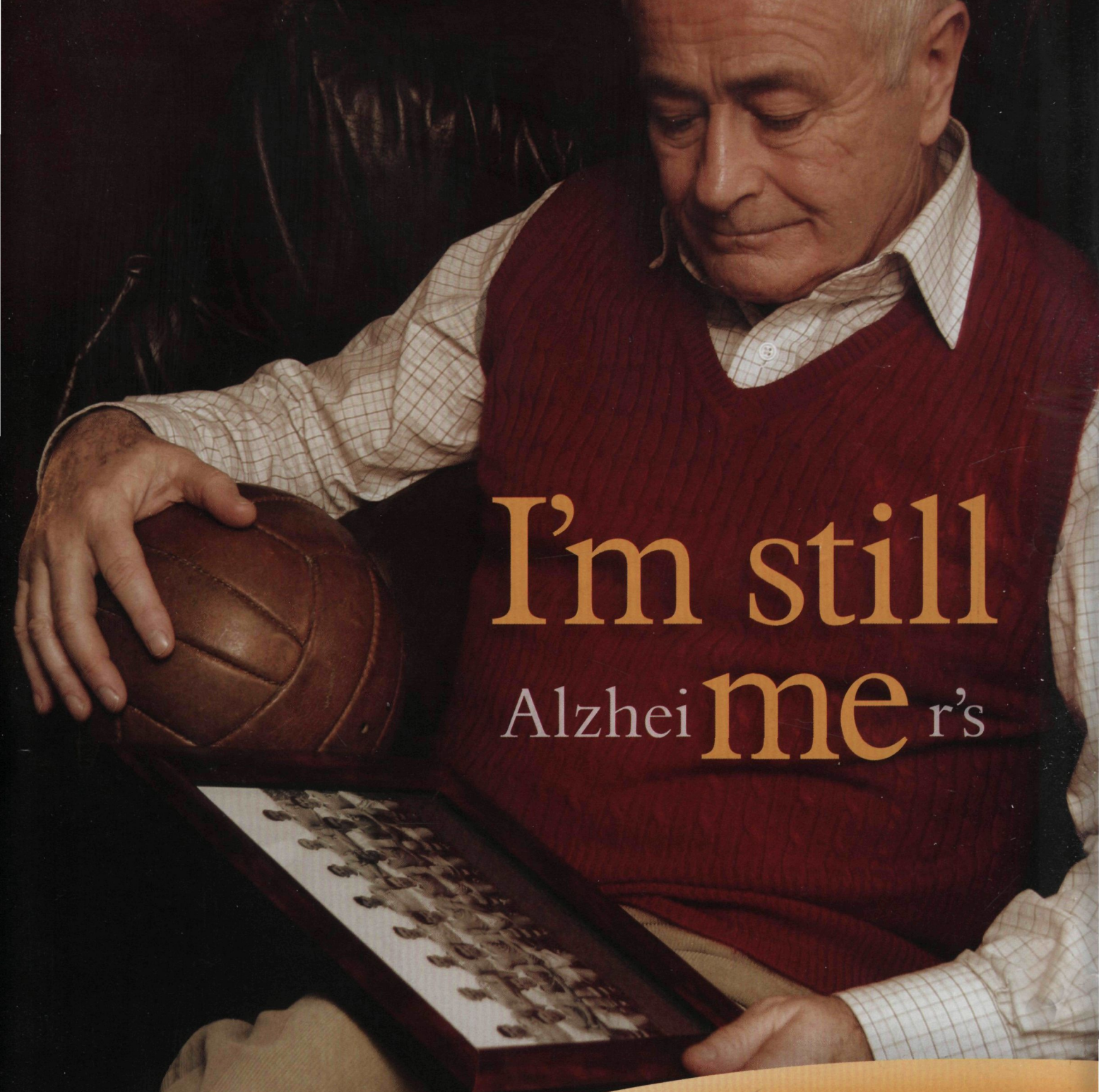
# IRISH JOURNAL OF PSYCHOLOGICAL MEDICINE

VOL 25 NO 1 MAR 2008

ISSN 0790-9667



**'Normandy'** Acrylics on canvas (50"x70")



# I'm still Alzheimer's

 **once daily**  
**Aricept**  
donepezil hydrochloride

**Making a difference in Alzheimer's**

**Abbreviated Prescribing Information for ARICEPT™ (donepezil) - Republic of Ireland**  
**ARICEPT Film-coated Tablets (donepezil hydrochloride)**

Please refer to the SmPC before prescribing ARICEPT 5 mg or ARICEPT 10 mg. Indication: Symptomatic treatment of mild to moderately severe Alzheimer's dementia. **Dose and administration:** *Adults/elderly*; 5 mg daily which may be increased to 10 mg once daily after at least one month. Initiation and supervision by a physician with experience of Alzheimer's dementia. A caregiver should be available to monitor compliance. Regular monitoring to ensure continued therapeutic benefit, consider discontinuation when evidence of a therapeutic effect ceases. No dose adjustment necessary for patients with renal impairment. Dose escalation, according to tolerability, should be performed in patients with mild to moderate hepatic impairment. **Children**; Not recommended. **Contra-indications:** Hypersensitivity to donepezil, piperidine derivatives or any excipients used in ARICEPT. **Lactation:** Excretion into breast milk unknown. Women on donepezil should not breast feed. **Warnings and Precautions:** Exaggeration of succinylcholine-type muscle relaxation. Avoid concurrent use of anticholinesterases, cholinergic agonists, cholinergic antagonists. Possibility of vagotonic effect on the heart which may be particularly important with "sick sinus syndrome", and supraventricular conduction conditions. There have been reports of syncope and seizures - in such patients the possibility of heart block or long sinusual pauses should be considered. Careful monitoring of patients at risk of ulcer disease including those receiving NSAIDs. Cholinomimetics may cause bladder outflow obstruction. Seizures occur in Alzheimer's disease and cholinomimetics have the potential to cause seizures and they may also have the potential to exacerbate or induce extrapyramidal symptoms. Care in patients with asthma, and

and obstructive pulmonary disease. As with all Alzheimer's patients, routine evaluation of ability to drive/operate machinery. No data available for patients with severe hepatic impairment. This medicinal product contains lactose. Patients with rare hereditary problems of galactose intolerance, the Lapp lactase deficiency or glucose-galactose malabsorption should not take this medicine. **Drug interactions:** Experience of use with concomitant medications is limited, consider possibility of as yet unknown interactions. Interaction possible with inhibitors or inducers of Cytochrome P450; use such combinations with care. Possible synergistic activity with succinylcholine-type muscle relaxants, beta-blockers, cholinergic or anticholinergic agents. **Side effects:** Most commonly diarrhoea, muscle cramps, fatigue, nausea, vomiting, and insomnia. Very common effects (>1/10): diarrhoea, nausea, headache. Common effects (>1/100, <1/10): common cold, anorexia, hallucinations, agitation, aggressive behaviour, syncope, dizziness, insomnia, vomiting, abdominal disturbance, rash, pruritis, muscle cramps, urinary incontinence, fatigue, pain, accident. Uncommon effects (>1/1000, <1/100): seizure, bradycardia, gastrointestinal haemorrhage, gastric & duodenal ulcers, minor increases in serum creatine kinase. Rare (>1/100,000, <1/10,000): extrapyramidal symptoms, sino-atrial block, atrioventricular block, liver dysfunction including hepatitis. Very rare (< 1/10000) and not known (cannot be estimated from available data). **Presentation:** Blister packed in strips of 14. ARICEPT 5 mg; white, film coated tablets marked 5 and Aricept, packs of 28. ARICEPT 10 mg; yellow, film coated tablets marked 10 and Aricept, packs of 28. **Marketing authorisation numbers:** ARICEPT 5 mg; PA 822/2/1. ARICEPT 10 mg; PA 822/2/2. **Marketing authorisation holder:** Pfizer Healthcare Ireland, 9 Riverwalk, National Digital Park, Citywest Business Campus, Dublin 24, Ireland. **Date of preparation:** April 2007



ARI/2007/023

**Editor-in-Chief:** Brian A Lawlor,  
Professor of Old Age Psychiatry,  
St Patrick's Hospital, Dublin 8

**Trainee Editor:** Brendan D Kelly,  
Consultant Psychiatrist, Department of  
Adult Psychiatry, The Mater  
Misericordiae Hospital, Dublin 7

**Production Editors:**  
Anne Henriksen, Patrick Gleeson

**Advertising Manager:**  
Deirdre Gleeson

**Administrator:** Andrea McAdam

**Founding Editor:** Mark Hartman

**Associate Editor:** Ted Dinan (Cork)

**Editorial Board:** Patricia Casey  
(Dublin), Anthony Clare (Dublin),  
Stephen Cooper (Belfast),  
Michael Fitzgerald (Dublin),  
Brian Leonard (Galway),  
Roy McClelland (Belfast),  
Eadbhard O'Callaghan (Dublin),  
Brian O'Shea (Wicklow), Ian Pullen  
(Edinburgh), Philip Snaith (Leeds),  
John Waddington (Dublin),  
Richard Williams (Victoria)

**Statistical Editor:**  
Ronan Conroy (Dublin)

**Submissions & correspondence to:**  
The Editor,  
Irish Journal of Psychological Medicine,  
25 Adelaide Street, Dun Laoghaire,  
Co Dublin, Ireland.

**Telephone:** 00-353-1-2803967

**Fax:** 00-353-1-2807076

**Email:** psychological@medmedia.ie

**Website:** www.ijpm.org

**Publisher**   
MedMedia Ltd, 25 Adelaide Street,  
Dun Laoghaire, Co Dublin, Ireland.  
www.medmedia.ie

**Printing:** W&G Baird Ltd

#### Subscriptions

Rates per volume of four issues  
(Mar, Jun, Sept, Dec): €160  
Incl. airmail postage internationally.

#### Subscription enquiries, orders and cheques made payable to:

MedMedia Ltd,  
25 Adelaide St, Dun Laoghaire,  
Co Dublin, Ireland  
Tel: + 353 1 280 3967  
Email: psychological@medmedia.ie  
www.medmedia.ie

#### Circulation

2,200 to 54 countries. The Journal  
participates in the World Health  
Organisation project to improve  
distribution of scientific materials on  
mental health. Publication does not  
imply endorsement. Limited photo-  
copying authorisation granted for a fee  
to Copyright Clearance Center,  
27 Congress Street, Salem, MA 01970,  
USA, or to appropriate Reproduction  
Rights Organisation; isolated non-profit,  
academic photocopying excepted.

#### Editorial

### 3 Meditation, mindfulness and mental health

Brendan D Kelly

#### Original Papers

### 5 The impact of rehabilitation and recovery service on patient groups residing in high support community residences

Annette Kavanagh, Ena Lavelle

### 11 Routine investigations in paediatric psychopharmacology

Aisling Mulligan, Fiona McNicholas, Tom Moran

### 17 A survey of admissions to a national forensic hospital, 1997-2003

Brenda Wright, Conor O'Neill, Harry G Kennedy

#### Audit

### 24 Analysis of referral letters to a Department of Old Age Psychiatry

Fiona Campbell, Brian Parsons, Ruth Loane

#### Case reports

### 29 Childhood adversity and substance misuse

Anita Ambreen Taj, Eamon Keenan, Patricia Casey

### 31 A 'silent' political protest by an asylum seeker presenting to an Irish psychiatric service

David Browne, Haseeb Rohilla, Miriam Gannon

### 15a John Dunne Medal

### 32a Guidelines for Authors

### 33 Letters to the Editor

### 34 Book Reviews

Indexed and abstracted by BIOLOGICAL ABSTRACTS (BIOSIS Previews); CENTRE NATIONAL DE LA RECHERCHE SCIENTIFIQUE/INIST: PASCAL; EXCERPTA MEDICA/EMBASE; INSTITUTE FOR SCIENTIFIC INFORMATION: CURRENT CONTENTS/ Social & Behavioural Sciences (Social Science CITATION INDEX, Research Alert); PSYCHOLOGICAL ABSTRACTS (PsycINFO/PsycLIT); Cumulative Index to Nursing & Allied Health Literature, Current AIDS Literature (CAB Abstracts), International Pharmaceutical Abstracts, Linguistics & Language Behaviour Abstracts, Nutrition Abstracts and Reviews, (CAB Abstracts), Referativnyi Zhurnal, Social Planning/Policy & Development Abstracts, Social Work Research & Abstracts, Sociological Abstracts.

Microfilm, microfiche & article copies from **University Microfilms International**, 300 North Zeeb Rd., Ann Arbor, MI 48106, USA. Journal included in the **Adonis** service, whereby article copies can be printed out from compact disks (CD-ROM) on demand; explanatory leaflet available from ADONIS BV, PO Box 639, 1000 AV Amsterdam, The Netherlands. Journal listed in **Ulrich's International Periodicals Directory** (**Bowker** International Serials Database), **EBSCO's** Selected Periodicals for the Medical and Health Sciences, & EBSCO's Librarians' Handbook.

THIS IS MY SON BRIAN

We see much more of  
each other now.  
It's good to  
have him  
back...

 Seroquel  
quetiapine



## HELPS MAKE LIVING A REALITY...

Seroquel has proven efficacy in the treatment of a broad range of symptoms in schizophrenia including agitation and hostility<sup>1,2,3</sup>, and has been proven to reduce mania symptoms in bipolar disorder as early as day 4<sup>4</sup>.

### Seroquel® Abridged prescribing information

[For full details see summary of product characteristics] **Presentations:** Film coated tablets containing 25mg, 100mg, 200mg and 300mg of quetiapine (as quetiapine fumarate). **Uses:** Treatment of schizophrenia and moderate to severe manic episode. **Dosage and Administration: Schizophrenia: Adults:** Initial titration from 50mg to 300mg over first 4 days. From day 4 onwards the dose should be titrated to the usual effective dose of 300-450 mg/day. Dose range 150 to 750 mg/day. **Bipolar disorder (Manic episodes): Adults:** Initial titration from 100mg to 400mg over first 4 days. Dose range: 200-800 mg/day. **Elderly:** Rate of dose titration may need to be slower and daily therapeutic dose lower than in younger patients. **Children & Adolescents:** Not evaluated. **Renal Impairment:** No dose adjustment required. **Hepatic Impairment:** Use with caution. Patients should be started on 25 mg/day and increased by 25 - 50 mg/day until an effective dosage is achieved. **Contra-indications:** Hypersensitivity to quetiapine fumarate or excipients. Concomitant administration of cytochrome P450 3A4 inhibitors, such as HIV-protease inhibitors, azole-antifungal agents, erythromycin, clarithromycin and nefazodone. **Precautions and warnings:** Known cardiovascular disease, cerebrovascular disease, or other conditions predisposing to hypotension. Possible initial orthostatic hypotension during the dose titration period. Caution is recommended in patients with a history of seizures. If signs and symptoms of tardive dyskinesia appear dose reduction or discontinuation should be considered. In the event of neuroleptic malignant syndrome discontinue treatment and appropriate medical treatment given. Hyperglycaemia or exacerbation of pre-existing diabetes has been reported in very rare cases. QT prolongation was observed with overdose. As with other antipsychotics, caution should be exercised when quetiapine is prescribed in patients with cardiovascular disease or family history of QT prolongation, and when quetiapine is prescribed with medicines known to increase QTc interval and concomitant neuroleptics, especially in the elderly, in patients with congenital long QT syndrome, congestive heart failure, heart hypertrophy, hypokalaemia or hypomagnesaemia. Acute withdrawal symptoms such as nausea, vomiting and insomnia have been described after abrupt cessation of antipsychotic drugs including Seroquel. Gradual withdrawal is advisable. Not approved for the treatment of patients with dementia - related

psychosis. **Undesirable effects:** The most commonly reported Adverse Drug Reactions with Seroquel are somnolence, dizziness, dry mouth, mild asthenia, constipation, tachycardia, orthostatic hypotension and dyspepsia. As with other antipsychotics, weight gain, syncope, neuroleptic malignant syndrome, leucopenia, neutropenia and peripheral oedema, have been associated with Seroquel. For full list of undesirable effects refer to SPC. **Interactions:** Use with caution with other centrally acting drugs and alcohol. CYP3A4 inhibitors such as ketoconazole are contraindicated. Grapefruit juice, phenytoin, carbamazepine, thioridazine. Observe caution when used concomitantly with drugs known to cause electrolyte imbalance or to increase QTc interval. **Pregnancy & lactation:** Safety and efficacy not established. **Effects on ability to drive:** Patients should be advised not to drive or operate machinery until individual susceptibility is known. **Pharmaceutical precautions:** Do not store above 30°C. **Legal category:** POM. **Product Authorisation Numbers:** Seroquel 25 PA970/18/1; Seroquel 100 PA970/18/2; Seroquel 200 PA970/18/3; Seroquel 300 PA970/18/7 **Product Authorisation holder:** AstraZeneca Ltd., Horizon Place, 600 Capability Green, Luton, Bedfordshire, LU1 3LU. **Further information on request from:** AstraZeneca Pharmaceuticals (Ireland) Limited, College Park House, 20 Nassau Street, Dublin 2. Tel. 01 609 7100; Fax. 01 679 6650. Abridged Prescribing Information prepared: August 2007. **Date of preparation:** December 2007.

### References

1. Tandon R & Jibson MD. International Journal of Psych in Clinical Practice, 2005; 9(3):204-212
2. Hellewell et al. Seroquel: efficacy in aggression, hostility and low mood of schizophrenia. Poster presented at C.I.N.P. Glasgow, UK, 1998.
3. Arango & Bernardo. Hum Psychopharmacol, 2005; 20: 237-241.
4. Vieta E. et al. Current Medical Research and Opinion, 2005; 21: P1-P12.

  
AstraZeneca  
NEUROSCIENCE