

WITNESS TO THE PAST

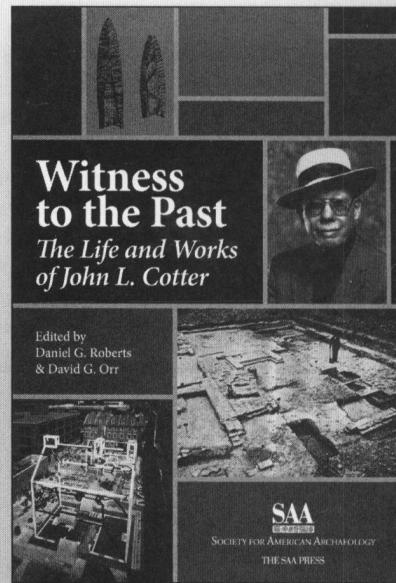
The Life and Works of John L. Cotter

During his long and distinguished career, **John L. Cotter** was a living icon to many American archaeologists and, at the time of his passing in February 1999, one of the last surviving links to the seminal Paleoindian excavations at Clovis and Lindenmeier in the 1930s. *Witness to the Past: The Life and Works of John L. Cotter* serves as a posthumous tribute to Cotter's life and career, reprinting many of his most important, and in some cases least accessible, works, beginning with his first publication in 1937 and ending with his last shortly after his death. Also included are several introductory and transitional sections newly written by the editors, as well as a few previously published tributes, an interview, and his formal memorial/bibliography. The book will appeal to a wide audience of those interested in the twentieth-century development of American archaeology as seen by one of the discipline's leading practitioners.

*Edited by Daniel G. Roberts
and David G. Orr*

*Published in cooperation with
The Society for Historical Archaeology*

Available May 2007



Regular Price: \$37.95
SAA and SHA Member Discount Price: \$29.95
ISBN No. 0-932839-31-2

**For ordering information,
please contact:**



SOCIETY FOR AMERICAN ARCHAEOLOGY

THE SAA PRESS

Telephone: +1 202-789-8200

Fax: +1 202-789-0284

Email: thesaapress@saa.org

www.saa.org

ARTICLES

- 3 Tiwanaku Influence in the South Central Andes: Strontium Isotope Analysis and Middle Horizon Migration
Kelly J. Knudson
- 25 El Maíz (Zea Mays) en el Mundo Prehispánico de Chile Central
Fernanda Falabella, M. Teresa Planella, y Robert H. Tykot
- 47 The Pre-Arawak Pottery Horizon in the Antilles: A New Approximation
Reniel Rodríguez Ramos, Elvis Babilonia, L. Antonio Curet, and Jorge Ulloa

REPORTS

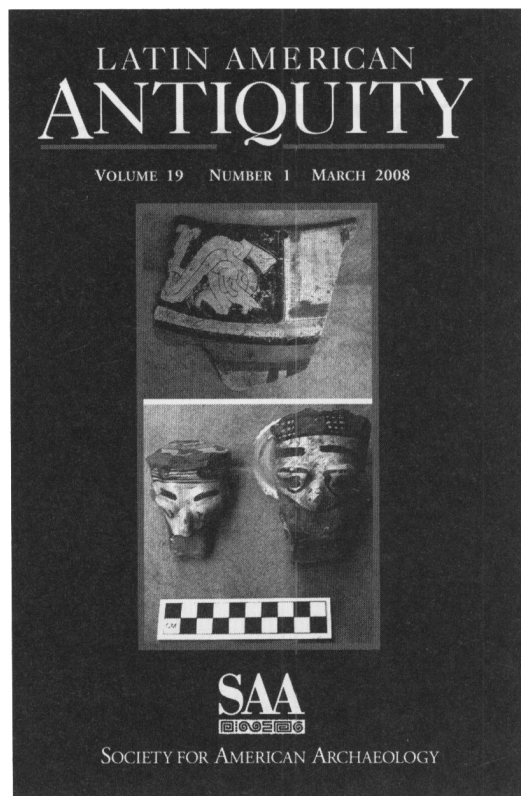
- 64 Domestic Practice in Postclassic Santa Isabel, Nicaragua
Geoffrey G. McCafferty
- 83 Stingray Spine Use and Maya Bloodletting Rituals: A Cautionary Tale
Helen R. Haines, Philip W. Willink, and David Maxwell

REVIEWS

- 99 Intermediate Elites in Pre-Columbian States and Empires, by Christina M. Elson and R. Allen Covey
Bradford W. Andrews
- 100 The Postclassic to Spanish-Era Transition in Mesoamerica: Archaeological Perspectives, edited by Susan Kepecs and Rani T. Alexander
Michael E. Smith
- 101 Janaab' Pakal of Palenque: Reconstructing the Life and Death of a Maya Ruler, edited by Vera Tiesler and Andrea Cucina
John Dudgeon

Book Notes

- 103 Stone Houses and Earth Lords: Maya Religion in the Cave Context, edited by Keith M. Prufer and James E. Brady
John Tomasic



NOTICE TO AUTHORS

American Antiquity publishes original papers on the archaeology of the New World and on archaeological method, theory, and practice worldwide. Authors of papers on Latin American topics are encouraged to submit their work to *Latin American Antiquity*. Papers on Latin American archaeology addressing broad methodological, theoretical, or comparative issues may be accepted by either journal after consultation with the editors. Authors submit manuscripts to the editor for consideration as ARTICLES, REPORTS, COMMENTS, or FORUM essays. REVIEWS and BOOK NOTES are solicited by the respective associate editor. OBITUARIES should be submitted to the editor, *The SAA Archaeological Record*, for publication (see *SAA Bulletin* March/April 1996, p. 7, for further details).

Authors should submit an original and four copies of their manuscripts, including all figures, tables, references, and notes. Detailed information on policy, style, and technical matters of manuscript preparation is given in the "Editorial Policy, Information for Authors, and Style Guide for *American Antiquity* and *Latin American Antiquity*," which appeared in the October 1992 issue (57:749–770) and can be read on the World Wide Web at <http://www.saa.org/Publications/StyleGuide/styframe.html>.

The editor reserves the right to evaluate manuscripts (with or without peer review) for appropriate subject matter, quality, length, and compliance with the style guide. Manuscripts may be returned to authors if they fail to meet expectations or conform to these guidelines. Manuscripts are evaluated by the editor in consultation with peer referees, as appropriate. The editor has the final responsibility for all decisions regarding manuscripts. The review process generally takes a minimum of two to four months. Authors will be notified as soon as a decision is reached to accept (outright or with revisions) or reject a manuscript.

To ensure the prompt receipt and handling of manuscripts, please send them to the editor: Stephen Plog, Professor of Anthropology, Department of Anthropology, PO Box 400120, Brooks Hall 308, University of Virginia, Charlottesville, VA 22904.

ARTICLES

- 179 Harvest Pressure and Environmental Carrying Capacity: An Ordinal-Scale Model of Effects on Ungulate Prey
Steve Wolverton
- 200 Land Use, Political Complexity, and Urbanism in Mainland Southeast Asia
Lisa Kealhofer and Peter Grave
- 227 The Mexican Connection and the Far West of the U.S. Southeast
Nancy Marie White and Richard A. Weinstein

REPORTS

- 279 The Identification of Hafting Adhesive on a Slotted Antler Point from a Southwest Yukon Ice Patch
Kate Helwig, Valery Monahan, and Jennifer Poulin
- 289 The Diablo Canyon Fauna: A Coarse-Grained Record of Trans-Holocene Foraging from the Central California Mainland Coast
Terry L. Jones, Judith F. Porcasi, Jereme Gaeta, and Brian F. Coddling
- 317 New Evidence in the Upper Mississippi Valley for Premississippian Cultural Interaction with the American Bottom
James B. Stoltman, Danielle M. Benden, and Robert F. Boszhardt
- 337 Taphonomic Analysis of the Mammalian Fauna from Sandia Cave, New Mexico, and the "Sandia Man" Controversy
Jessica C. Thompson, Nawa Sugiyama, and Gary S. Morgan
- 361 Frederick H. Sterns and the Portrayal of Variation in Central Plains Pottery
Donna C. Roper

On the Cover: The southeastern United States and Mexico, showing Southeast and Mesoamerican culture areas (hatched), geographic features, and selected important sites. From "The Mexican Connection and the Far West of the U.S. Southeast" by Nancy Marie White and Richard A. Weinstein, p. 231.

Ⓢ The paper used in this publication meets the requirements of ANSI/NISO Z39.48-1992
(Permanence of Paper).