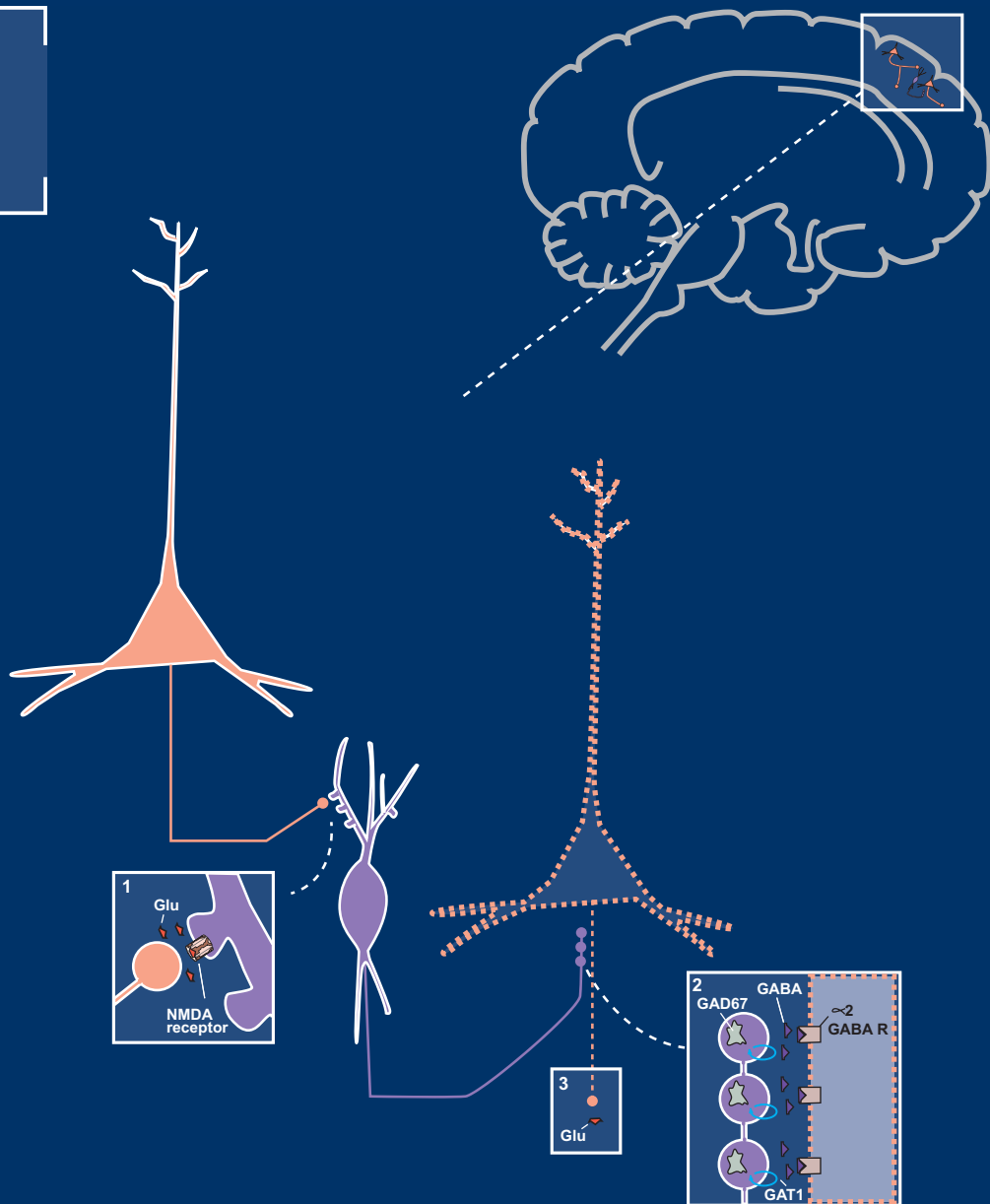


VOLUME 21 | ISSUE 5

October 2016

ISSN: 1092-8529



[journals.cambridge.org/cns](http://journals.cambridge.org/cns)

# CNS SPECTRUMS

EDITOR-IN-CHIEF: **STEPHEN M. STAHL**

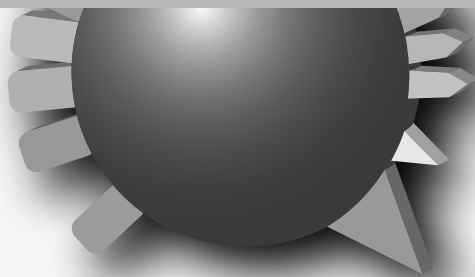
The journal of the  
**Neuroscience  
Education Institute**

**CAMBRIDGE  
UNIVERSITY PRESS**

# Want some CME with that?

# STAHL

# MASTERCLASS



- An online educational program in core areas of psychiatry with interactive readings, short lectures, animations and case studies

---

- Self-testing and opportunities to claim formal CME credits, all taken at a self-directed speed

---

- Written and moderated by experts in the field from the Dr. Stahl's Neuroscience Education Institute and the University of Cambridge

For more information, please go to  
[www.stahlmasterclass.com](http://www.stahlmasterclass.com)



CAMBRIDGE  
UNIVERSITY PRESS

# CNS SPECTRUMS

## CONTENTS

### BRAINSTORMS

- Parkinson's disease psychosis as a serotonin-dopamine imbalance syndrome**  
Stephen M. Stahl 355

### EDITORIAL

- Elective amputation of a "healthy limb"**  
Rianne M. Blom, Valeria Guglielmi and Damiaan Denys 360

### OPINION

- Anhedonia and cognitive function in adults with MDD: results from the International Mood Disorders Collaborative Project**  
Roger S. McIntyre, Hanna O. Woldeyohannes, Joanna K. Soczynska, Nadia A. Maruschak, Ida K. Wium-Andersen, Maj Vinberg, Danielle S. Cha, Yena Lee, Holly X. Xiao, Laura Ashley Gallagher, Roman M. Dale, Mohammad T. Alsuwaidan, Rodrigo B. Mansur, David J. Muzina, Andre F. Carvalho, Jeanette M. Jerrell and Sidney H. Kennedy 362

### ORIGINAL RESEARCH

- Treatment-emergent sexual dysfunction in randomized trials of vortioxetine for major depressive disorder or generalized anxiety disorder: a pooled analysis**  
Paula L. Jacobsen, Atul R. Mahableshwarkar, William A. Palo, Yinzhong Chen, Marianne Dragheim and Anita H. Clayton 367

- Differences in memory function between 5-HT1A receptor genotypes in patients with major depressive disorder**  
Keith A. Wesnes, Seth C. Hopkins, Helen J. Brooker and Kenneth S. Koblan 379

- The efficacy of levomilnacipran ER across symptoms of major depressive disorder: a post hoc analysis of 5 randomized, double-blind, placebo-controlled trials**  
Roger S. McIntyre, Carl Gommoll, Changzheng Chen and Adam Ruth 385

- Long-term safety and effectiveness of lurasidone in schizophrenia: a 22-month, open-label extension study**  
Christoph U. Correll, Josephine Cucchiaro, Robert Silva, Jay Hsu, Andrei Pikalov and Antony Loebel 393

- Lamotrigine compared to placebo and other agents with antidepressant activity in patients with unipolar and bipolar depression: a comprehensive meta-analysis of efficacy and safety outcomes in short-term trials**  
Marco Solmi, Nicola Veronese, Leonardo Zaninotto, Marc L. M. van der Loos, Keming Gao, Ayal Schaffer, Catherine Reis, Claus Normann, Ion-George Anghelescu and Christoph U. Correll 403

### Editor-in-Chief

Stephen M. Stahl, Adjunct Professor of Psychiatry at the University of California San Diego, USA;  
Honorary Visiting Senior Fellow at the University of Cambridge, UK.

### Field Editors

Joseph F. Goldberg, Icahn School of Medicine at Mount Sinai, USA  
Thomas E. Schlaepfer, University Hospital Bonn, Germany  
Frank I. Tarazi, Harvard Medical School, USA  
Carlos A. Zarate, National Institute of Mental Health, USA

### Deputy Editor

Thomas L. Schwartz, SUNY Upstate Medical University at Syracuse, USA

### Editorial Board

Maria Conceição do Rosario, University of São Paulo Medical School, Brazil  
Jeffrey L. Cummings, Cleveland Clinic, USA  
Thilo Deckersbach, Harvard Medical School, USA  
Koen Demyttenaere, University Psychiatric Center KuLeuven, Belgium  
Karen D. Ersche, University of Cambridge, UK  
Robert L. Findling, The Johns Hopkins Hospital, USA  
Patrick R. Finley, University of California, San Francisco, USA  
Mark S. George, Medical University of South Carolina, USA  
Ira D. Glick, Stanford University, USA  
Joseph F. Goldberg, Icahn School of Medicine at Mount Sinai, USA  
Eric Hollander, Albert Einstein College of Medicine and Montefiore Medical Center, USA  
Daphne Holt, Harvard Medical School, USA  
Peter B. Jones, University of Cambridge, UK  
Andres M. Kanner, University of Miami, USA  
Antony D. Loebel, New York University School of Medicine, USA  
Donatella Marazziti, University of Pisa, Italy  
Herbert Y. Meltzer, Northwestern University, USA  
Philip Mitchell, University of New South Wales, Australia  
Jun Nakamura, University of Occupational and Environmental Health, Japan  
Humberto Nicolini, National Institutes of Health, Minister of Health, México  
Andrew A. Nierenberg, Harvard Medical School, USA  
Stefano Pallanti, University of Florence, Italy  
Katharine A. Phillips, Brown University, USA  
Diego A. Pizzagalli, Harvard Medical School, USA  
Mark H. Pollack, Rush University Medical Center, USA  
Mark H. Rapaport, Emory University, USA  
Irismar Reis de Oliveira, Universidade Federal da Bahia, Brazil  
Trevor W. Robbins, University of Cambridge, UK  
Peter P. Roy-Byrne, University of Washington School of Medicine, USA  
Barbara J. Sahakian, University of Cambridge, UK  
Gerard Sanacora, Yale University School of Medicine, USA  
Alan F. Schatzberg, Stanford University School of Medicine, USA  
Thomas E. Schlaepfer, University of Bonn, Germany  
Thomas L. Schwartz, SUNY Upstate Medical University in Syracuse, USA  
Jordan W. Smoller, Harvard Medical School, USA  
Dan J. Stein, University of Cape Town (UCT), South Africa  
Stephen Strakowski, University of Cincinnati, USA  
T. Scott Stroup, Columbia University, USA  
Frank I. Tarazi, Harvard Medical School, USA  
Michael E. Thase, University of Pennsylvania, USA  
Michael Trimble, National Hospital for Neurology, Queen Square, London  
Madhukar H. Trivedi, University of Texas Southwestern Medical Center, USA  
Karen Dineen Wagner, The University of Texas Medical Branch, USA  
Katherine D. Warburton, California Department of State Hospitals, USA  
Stephen R. Wisniewski, University of Pittsburgh, USA  
Shigeto Yamawaki, Hiroshima University, Japan  
Carlos A. Zarate, Jr., National Institute of Mental Health, USA  
Joseph Zohar, Tel Aviv University, Israel

### Managing Editor

Lisa Arrington, Cambridge University Press (larrington@cambridge.org)

---

**Cover Image:** The image on the cover shows a hypothetical model whereby glutamate is released from an intracortical pyramidal neuron and binds to an NMDA receptor on a GABA-ergic interneuron. GABA is then released and binds to receptors on the axon of another glutamate pyramidal neuron. This inhibits the neuron, thus reducing the release of cortical glutamate. The GABA interneuron and its NMDA synapse from the first neuron to the second is the hypothetical site of glutamate dysfunction in schizophrenia.

*Stahl's Essential Psychopharmacology*, 4th edition, by Stephen M. Stahl

Copyright © 2016 Stephen M. Stahl. Reproduced with permission.

## Aims and Scope

*CNS Spectrums* covers all aspects of the clinical neurosciences, neurotherapeutics and neuropsychopharmacology, particularly those pertinent to the clinician and clinician investigator. The journal features focused, in-depth reviews, perspectives and original research articles. New therapeutics of all types in psychiatry, mental health, and neurology are emphasized, especially first in man studies, proof of concept studies and translational basic neuroscience studies. Subject coverage spans the full spectrum of neuropsychiatry, focusing on those crossing traditional boundaries between neurology and psychiatry.

## Submitting Manuscripts to *CNS Spectrums*

All submissions to *CNS Spectrums* should be prepared in accordance with the instructions for authors and in the style of the Journal. Manuscripts should be submitted through the dedicated *CNS Spectrums* ScholarOne Manuscripts website: <http://mc.manuscriptcentral.com/cnsspectr>

*CNS Spectrums* will consider and encourage the following types of articles for publication: **Reviews**—The review article is a comprehensive article summarizing and synthesizing the literature on various topics presented in a scholarly and clinically relevant fashion; **Perspectives**—The perspective article is a type of review that is a short, focused summary of a single recent advance, a sort of spotlight on the topic, which could be for example, a single point hypothesis or a novel model. It can stimulate debate and new research. **Meta Guidelines**—A meta-guideline is a “guideline of guidelines” put together by several leading figures in a field in which there are multiple competing guidelines that require synthesis and updating; **Original Research**—Reports the results of a clinical study and contains original research; the journal will also include **Brainstorms** and **Editorials** that shall be commissioned or written by the Editor-in-Chief.

## Instructions for Contributors

The Instructions for Contributors are available on the Cambridge Journals Online web site at: <http://journals.cambridge.org/CNSifc>

## Indexing

*CNS Spectrums* is indexed by *Index Medicus*/MEDLINE and Web of Science (Thomson Reuters) as well as appearing in the annual Journal Citation Report. Introduced in 1996, the journal was acquired in whole by Cambridge University Press in November of 2011.

## Subscriptions

Institutional print and electronic: £544/\$862; Institutional electronic only: £413/\$660.

## © Cambridge University Press 2016. All rights reserved.

No part of this publication may be reproduced, in any form or by any means, electronic, photocopying, or otherwise, without permission in writing from Cambridge University Press. Policies, request forms, and contacts are available at: <http://www.cambridge.org/rights/permissions/permission.htm>. Permission to copy (for users in the U.S.A.) is available from Copyright Clearance Center <http://www.copyright.com>, email: [info@copyright.com](mailto:info@copyright.com).

Rights & permissions requests can be applied for online within each article by clicking “Request Permissions” within the table of contents or in the fulltext version of a specific article. Requests will be processed via the CCC Rightslink system and processed immediately.

*CNS Spectrums* (ISSN: Print 1092-8529; eISSN: 2165-6509) is published bimonthly by Cambridge University Press.

## Postmaster

Send address changes in the U.S.A., Canada, and Mexico to *CNS Spectrums*, Cambridge University Press, Journals Dept., One Liberty Plaza, 20th Floor, New York, NY 10006, U.S.A. Send address changes elsewhere to *CNS Spectrums*, Cambridge University Press, The Edinburgh Building, Shaftesbury Road, Cambridge CB2 8RU, England.

## Online availability

*CNS Spectrums* is hosted on the Cambridge Journals Online (CJO) service at <http://journals.cambridge.org/cns>

Institutional subscribers: Access to full-text articles online is only granted to subscription options offering an online component. Subscriptions must be activated by the purchasing institution using the instructions provided at the time of purchase; see information for subscribers at: <http://journals.cambridge.org/>

## Reprint and Advertising Sales

Inquiries for bulk reprint sales should be sent to [USReprints@cambridge.org](mailto:USReprints@cambridge.org). Advertising inquiries should be sent to M. J. Mrvica Associates, Inc., 2 West Taunton Avenue, Berlin, NJ 08009; Phone: 856-768-9360; Fax: 856-753-0064; Email: [mjmrvica@mrvica.com](mailto:mjmrvica@mrvica.com).