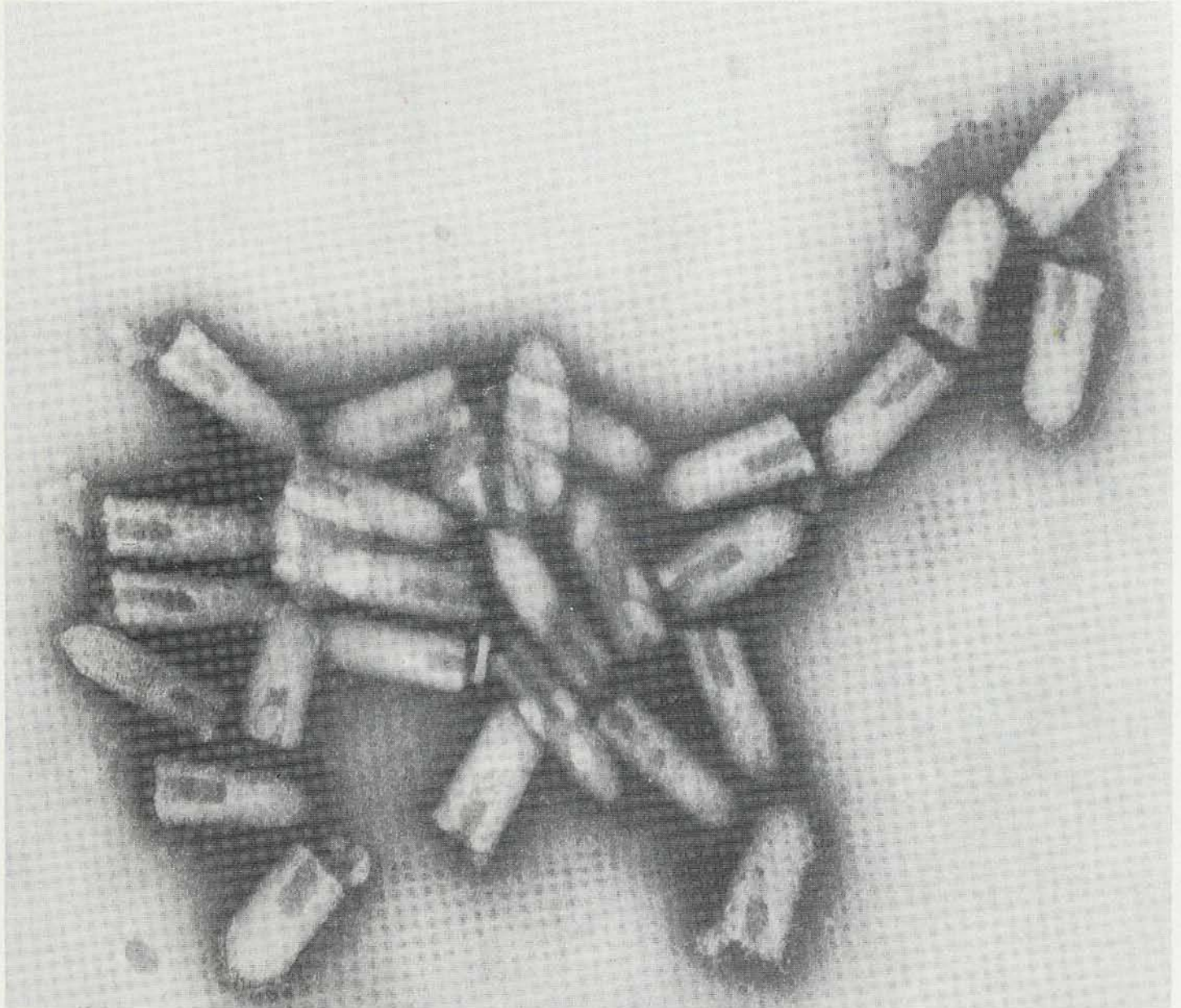


# MICROSCOPY TODAY

DECEMBER 1997

ISSUE #97-10





# Seeing is believing

## The LEO 1500 series is here...



The LEO 1500 series, featuring the unique GEMINI electron optical column and a total new control system has arrived. With a new generation of LEO's powerful software control running in Windows 95, the LEO 1500 series offers you the following powerful capabilities:

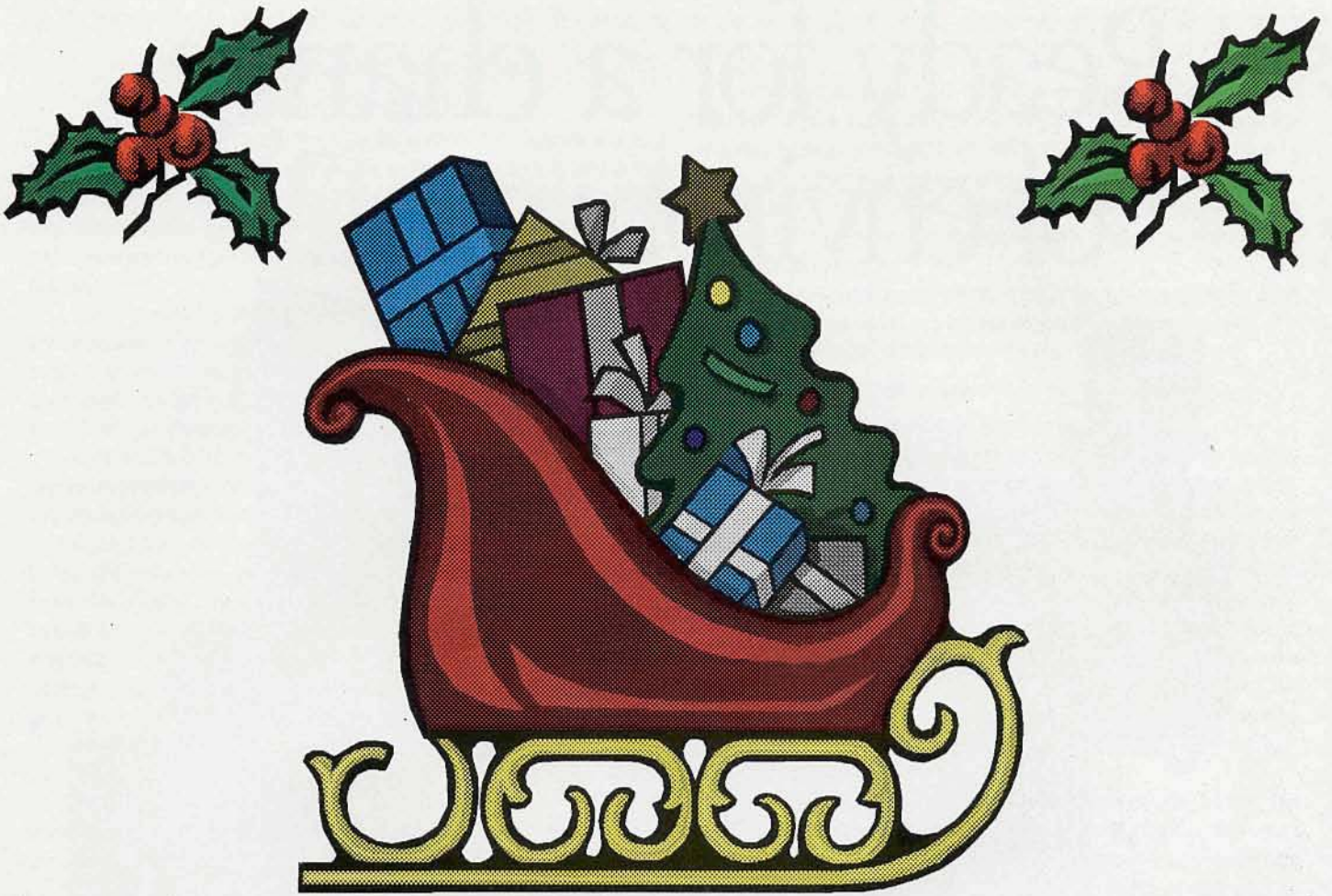
- ▼ Set up different users' access levels, with log-on procedure using the built-in Administrator facility.
- ▼ Save images to disk or network at pixel resolutions up to 3k x 2k, so that you can even zoom the magnification on stored images.
- ▼ Choose the beam voltage (200V to 30kV) to suit the sample or the analysis, because the resolution is superb at any voltage.
- ▼ Fast and accurate analysis with EDX, EBS, BSD thanks to the exceptionally stable high probe current.
- ▼ Produce hard copy results in a format that you need using any Windows™ compatible printer - laser prints, colour dye sublimations, photographic etc.

*Best of all, astonishing image quality is at your fingertips. Call your local LEO representative for information or a demonstration and you'll find that seeing really is believing.*

LEO Electron Microscopy  
UK:  
Telephone (44) 1223 414166  
Fax (44) 1223 412776  
E-mail [info@leo-em.co.uk](mailto:info@leo-em.co.uk)  
Website [www.leo-em.co.uk](http://www.leo-em.co.uk)  
Germany:  
Telephone (49) 73 64 94 6137  
Fax (49) 73 64 94 4851  
E-mail [info@leo.de](mailto:info@leo.de)  
France:  
Telephone (33) 1 41 39 92 10  
Fax (33) 1 41 39 92 29  
E-mail [LEO\\_france@compuserve.com](mailto:LEO_france@compuserve.com)  
USA:  
Telephone (1) 914 747 7700  
Fax (1) 914 681 7443  
E-mail [70142.504@compuserve.com](mailto:70142.504@compuserve.com)  
Plus a worldwide network of dealers

**LEO**  
*The power to resolve*





*Wishing you laughter-filled holidays,  
and a New Year of health, happiness, and prosperity!*

---

Front Page Image  
**The Horse Virus**

This electron micrograph of vesicular stomatitis virus particles was taken by Dr. Douglas A. Gregg, the veterinary pathologist and electron microscopist at the Foreign Animal Disease Diagnostic Laboratory, NVSL, USDA at Plum Island, NY. The sample was a negative stained preparation of concentrated lamb kidney cell culture fluid. The culture had been inoculated with tongue tissue submitted from a field outbreak of vesicular stomatitis in New Mexico in June 1995. Outbreaks of vesicular stomatitis have occurred approximately every ten years in cattle or horses in the western United States and are usually associated with wet weather that encourages viral spread by biting insects. The question at the time was whether the outbreak started in cattle or horses, the two major species involved in the outbreak. Dr. Gregg facetiously proposed that, based on this micrograph, the virus must have originated from horses.

---

**MICROSCOPY TODAY**

*A monthly newsletter dedicated to the unique interests in microscopy and mailed to some 8,000  
microscopists worldwide - at no cost in the U.S. and with a modest international charge.*

PO Box 620122, Middleton, WI 53562 - Tel.: (608)836-1970 - Fax: (608)836-1969 - eMail: MicroToday@aol.com

<http://www.microscopy-today.com>

Copyright in 1997 by Today Enterprises. All rights reserved.

Don Grimes, Editor



# Ready for a change of environment?



Now. Hitachi SEM  
sophistication.  
Windows 95 simplicity.

Sure, everyone knows SEMs are becoming more and more technologically sophisticated. But that's no reason why their operation should require an environment of intricate, often mind-boggling, challenges.

Enter Hitachi's new S-4700 and S-3500N SEMs, which replace all that operational complexity with the easy familiarity of Windows™ 95 control. So anyone who's ever used a Windows-based PC can — with a near-zero learning curve — take over their operation. And how's this? To keep die-hard traditionalists just as excited, these SEMs can come set up for convenient switching to conventional control as well.

Our S-4700 FE SEM and S-3500N Variable Pressure SEM offer even more to be excited about. Like superior resolution. The S-4700's new objective lens, for example, not only contributes to a resolu-

tion of 25Å at 1kV, but helps maintain that high resolution even when studying large samples at high tilt angles and at long working distances. Further, both instruments are available with our *Hi Mouse* feature, for operating EDX systems right from the SEM. (In fact, the S-4700's analytical mode permits EDX operation concurrent with high-resolution imaging.) And, with our *Rapid Image Shift Movement* (RISM) capability, you'll have the fastest, most precise specimen navigation ever.

So. Super performance made super easy. It's surely a refreshing environment for SEM microscopy. And just as surely, you'll want details on these breakthrough SEMs. You can get them easily by phone

or E-mail, or by visiting our Web site — which, of course, you'll very likely do via a friendly Windows environment.

## HITACHI

LEASING PROGRAMS  
NOW AVAILABLE.