

New Titles in Genetics from Cambridge!

EMBOSS Administrator's Guide

Bioinformatics Software Management

Alan J. Bleasby, Jon C. Ison,
and Peter M. Rice

\$65.00; Pb: 978-0-521-18815-9; 176 pp.

EMBOSS Developer's Guide

Bioinformatics Programming

Jon C. Ison, Peter M. Rice,
and Alan J. Bleasby

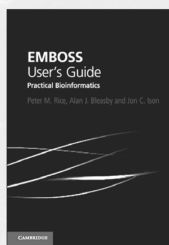
\$90.00; Pb: 978-0-521-60724-7; 656 pp.

EMBOSS User's Guide

Practical Bioinformatics

Peter M. Rice,
Alan J. Bleasby,
and Jon C. Ison

\$45.00; Pb: 978-0-521-60725-4;
408 pp.



The Shaping of Life

The Generation of Biological Pattern

Lionel G. Harrison

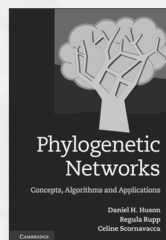
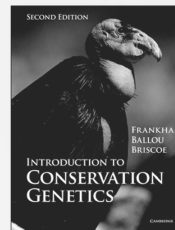
\$99.00; Hb: 978-0-521-55350-6; 272 pp.

SECOND EDITION

Introduction to Conservation Genetics

Richard Frankham,
Jonathan D. Ballou,
and David A. Briscoe

\$75.00; Pb: 978-0-521-70271-3; 642 pp.

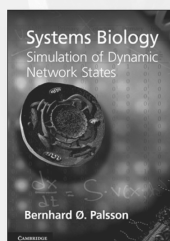


Phylogenetic Networks

Concepts, Algorithms and Applications

Daniel H. Huson, Regula Rupp,
and Celine Scornavacca

\$57.00; Hb: 978-0-521-75596-2; 374 pp.



Systems Biology

Simulation of Dynamic Network States

Bernhard Ø. Palsson
Prepared for publication by
Marc Abrams

\$75.00; Hb: 978-1-107-00159-6; 332 pp.

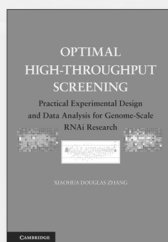
Optimal High-Throughput Screening

Practical Experimental Design and Data Analysis for Genome-Scale RNAi Research

Xiaohua Douglas Zhang

\$99.00; Hb: 978-0-521-51771-3; 232 pp.

\$39.99; Pb: 978-0-521-73444-8



A Cybernetic View of Biological Growth

The Maia Hypothesis

Tony Stebbing

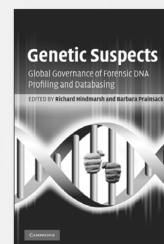
\$110.00; Hb: 978-0-521-19963-6; 456 pp.

Genetic Suspects

Global Governance of Forensic DNA Profiling and Databasing

Edited by Richard Hindmarsh
and Barbara Prainsack

\$70.00; Hb: 978-0-521-51943-4; 370 pp.



SECOND EDITION

The Phylogenetic Handbook

A Practical Approach to Phylogenetic Analysis and Hypothesis Testing

Edited by Philippe Lemey, Marco Salemi,
and Anne-Mieke Vandamme

\$131.00; Hb: 978-0-521-87710-7; 750 pp.

\$55.00; Pb: 978-0-521-73071-6

RNA Interference Technology

From Basic Science to Drug Development

Edited by Krishnarao Appasani
Foreword by Andrew Fire and Marshall Nirenberg

\$245.00; Hb: 978-0-521-83677-7; 544 pp.

\$95.00; Pb: 978-0-521-20517-7

Prices subject to change.



CAMBRIDGE

JOURNALS

Journal of Biosocial Science

Editor

C. G. N. Mascie-Taylor, University of Cambridge, UK

Journal of Biosocial Science is a leading journal in the field of biosocial science, the common ground between biology and sociology. It is an essential reference guide for all biological and social scientists working in such areas as reproduction and its control, gerontology, ecology, genetics, applied psychology, sociology, education, criminology, demography, health and epidemiology. Publishing original research papers, short reports, reviews, lectures and book reviews, the journal also includes a Debate section which encourages comments on specific articles, with subsequent response from the original author.

Price information

is available at: <http://journals.cambridge.org/jbs>

Free email alerts

Keep up-to-date with new material – sign up at
<http://journals.cambridge.org/alerts>



Journal of Biosocial Science is available online at:
<http://journals.cambridge.org/jbs>

To subscribe contact Customer Services

in Cambridge:

Phone +44 (0)1223 326070
Fax +44 (0)1223 325150
Email journals@cambridge.org

in New York:

Phone +1 (845) 353 7500
Fax +1 (845) 353 4141
Email
subscriptions_newyork@cambridge.org

For free online content visit:
<http://journals.cambridge.org/jbs>



CAMBRIDGE
UNIVERSITY PRESS

CAMBRIDGE

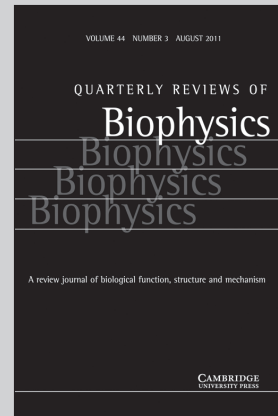
JOURNALS

Quarterly Reviews of Biophysics

Editor-in-chief

Bengt Nordén, *Chalmers University of Technology, Göteborg, Sweden*

Quarterly Reviews of Biophysics covers the whole field of biophysics, from ion channels to DNA topology, and from X-ray diffraction to NMR. The journal has gained a worldwide reputation, demonstrated by its high ranking in the ISI Science Citation Index, as a forum for general and specialised communication between biophysicists working in different areas. All reviews published are invited from authors who have made significant contributions to the field, who give critical, readable and sometimes controversial accounts of recent progress and problems in their speciality.



Quarterly Reviews of Biophysics

is available online at:

<http://journals.cambridge.org/qrb>

To subscribe contact Customer Services

in Cambridge:

Phone +44 (0)1223 326070

Fax +44 (0)1223 325150

Email journals@cambridge.org

in New York:

Phone +1 (845) 353 7500

Fax +1 (845) 353 4141

Email

subscriptions_newyork@cambridge.org

Free email alerts

Keep up-to-date with new
material – sign up at

journals.cambridge.org/register

For free online content visit:
<http://journals.cambridge.org/qrb>



CAMBRIDGE
UNIVERSITY PRESS

Genetics Research

INSTRUCTIONS FOR CONTRIBUTORS

Genetics Research publishes papers on all aspects of the genetics of complex traits. Excellent papers in other areas of genetics are also welcome. Specifically, the journal publishes empirical and theoretical studies on evolutionary and population genetics, quantitative and statistical genetics, genomics and systems genetics, and molecular and developmental genetics. On the empirical side papers reporting studies that have broad implications using a range of organisms, from well-established genetic model organisms (flies, *C. elegans*, mice, yeast, Arabidopsis); agricultural species (cows, pigs, sheep, chickens, rice, maize, wheat) to humans are encouraged. In addition to research articles the journal welcomes reviews that deal with any field within its scope.

Contributions are welcomed from scientists of all nationalities but must be written in English. Submission of a paper will be taken to imply that it is unpublished and is not being considered for publication elsewhere. Papers should be as concise as clarity permits, and illustrations should be restricted to the *minimum needed*. *Short Papers* are designed for concisely written reports of work for which rapid publication is considered desirable. Such papers will normally be published within three months of receipt in acceptable form. They should not exceed 4 pages of print in length, and should include a summary.

Submissions These should be made via the journal's online submission system at <http://www.editorialmanager.com/genetics>. They should be typed in font size 12 and double-spaced. The title should ordinarily identify the organism. The address of the laboratory at which the work was carried out will be printed with the authors' names at the head of the paper, and changes of address may be added in footnotes. A footnote to the title page should also give the name and address to whom reprint requests may be made. Sources of financial support should be included with other acknowledgements at the end of the text. The title page of the typescript should include a short title for running headlines (limited to 50 letters and spaces), and the name and address of the author (or his proxy) to whom the proofs are to be sent, under the heading: *Proofs to be sent to . . .* Main headings should be typed in capitals and (except summary and references) numbered consecutively. Subheadings should be typed in lower case, and italicized except for those words and symbols which would be italicized in the text. Subheadings should be numbered (i), (ii), etc., within each main heading. There are no page charges for this journal.

Summary The summary will be printed at the beginning of the paper. It should give a concise abstract of the significant content and conclusions of the paper, in a form suitable for abstracting journals to use, and should not exceed 250 words.

Illustrations Colour illustrations are now published free of charge for this journal – for both the online and printed versions. All illustrations, including photographs, diagrams, graphs etc. are to be labelled consecutively Figure 1, 2 . . . according to

their relative positions in the text. Each figure should have a legend to be printed underneath it. *Diagrams* should be about twice the size of the printed figure, but not larger than 305×203 mm (12×8 inches), unless exceptionally complicated, and the thickness of lines and size of points should be determined accordingly.

Tables Each table should be typed on a separate sheet of paper and its approximate position in the text indicated on the typescript. Each should be numbered and carry an appropriate title. The table should be designed, whenever possible, to be printed in the normal orientation of the text. The data should be grouped so as to make the use of rules unnecessary, for they will only be included at the Editor's discretion. Table footnotes should ordinarily employ the symbols *, †, ‡, §, ||, ¶, **, etc., in that order.

Symbols Gene and mathematical symbols should generally be printed in italics, matrices in boldface. Note that '+' as the symbol for a wild-type allele should not be italicized.

Nomenclature Wherever possible, standardized nomenclature should be employed. The author should refer to the following publications for guidance: Novick *et al.* (*Bacteriological Reviews* **40**, 168–189) for plasmids; O'Brien (Ed.), *Genetic Maps* **6**, Cold Spring Harbor 1993, for information on most species and recent gene lists.

References should follow the normal usage in the journal. In the list of references at the end of the paper, *both titles of articles and names of periodicals* should be written out in full.

Distribution of Reagents and Deposition of Sequences Manuscripts will only be accepted for publication in *Genetics Research* on the understanding that protein and nucleic acid sequence data is deposited in a suitable public database, and polymorphism data is deposited in HGBASE. The corresponding accession numbers must be included in the paper. Authors must also be willing to distribute freely, for academic research, any new strains, clones or antibodies that they describe.

Proofs Authors will be advised by email when to download their proofs from the Cambridge University Press website. These proofs, after correction, should be returned to the Executive Editor. Excessive alterations, other than corrections of printers' errors, may be disallowed or charged to the author. Corrections should be made using the symbols in British Standard 1219: 1958, or its shortened version B.S. 1219C: 1958.

Offprints Authors will be provided with a free pdf of their article and offprints may be ordered in using form sent out with proofs, provided this is returned within fourteen days of receipt.

This journal issue has been printed on FSC-certified paper and cover board. FSC is an independent, non-governmental, not-for-profit organization established to promote the responsible management of the world's forests. Please see www.fsc.org for information.

Cambridge University Press

The Edinburgh Building, Cambridge CB2 8RU, United Kingdom
32 Avenue of the Americas, New York, NY 10013–2473, USA
477 Williamstown Road, Port Melbourne, VIC 3207, Australia
C/ Orense, 4, Planta 13 28020 Madrid, Spain

Lower Ground Floor, Nautica Building, The Water Club, Beach Road, Granger Bay, 8005, Cape Town, South Africa

Printed in the United Kingdom at the University Press, Cambridge

GENETICS RESEARCH

CONTENTS

RESEARCH PAPERS

Isolation and identification of an AP2/ERF factor that binds an allelic *cis*-element of rice gene *LRK6*

Qianjie Wang, Weiwei Qi, Ying Wang, Fan Sun, Xiaoyin Qian, Xiaojin Luo and Jinshui Yang 319

How to deal with genotype uncertainty in variance component quantitative trait loci analyses

Xia Shen, Lars Rönnegård and Örjan Carlborg 333

Multipoint maximum likelihood mapping in a full-sib family of an outbreeding species

J. W. Van Ooijen 343

A Bayesian approach for correcting for partial plating in fluctuation experiments

Qi Zheng 351

Bias in genomic predictions for populations under selection

Z. G. Vitezica, I. Aguilar, I. Misztal and A. Legarra 357

Does selection or genetic drift explain geographic differentiation of morphological characters in house sparrows *Passer domesticus*?

Anna M. Holand, Henrik Jensen, Jarle Tufto and Rune Moe 367