

## Review

**Cite this article:** Pierik HJ and Cohen KM. The use of geological, geomorphological and soil mapping products in palaeolandscapes reconstructions for the Netherlands. *Netherlands Journal of Geosciences*, Volume 99, e9. <https://doi.org/10.1017/njg.2020.8>

Received: 9 July 2019

Revised: 10 April 2020

Accepted: 15 April 2020

### Keywords:

geological mapping; palaeogeography; legacy maps; Netherlands

### Author for correspondence:

Harm Jan Pierik, Email: [h.j.pierik@uu.nl](mailto:h.j.pierik@uu.nl)

# The use of geological, geomorphological and soil mapping products in palaeolandscapes reconstructions for the Netherlands

Harm Jan Pierik<sup>1</sup>  and Kim M. Cohen<sup>1,2</sup>

<sup>1</sup>Department of Physical Geography, Faculty of Geosciences, Utrecht University, P.O. Box 80.115, 3508 TC Utrecht, the Netherlands and <sup>2</sup>Deltares, Department of Applied Geology and Geophysics, P.O. Box 85.467, 3508 AL Utrecht, the Netherlands

## Abstract

Geological, geomorphological and soil maps provide important information on the substrate as well as on the past and present physical landscape. For the intensely studied Netherlands coastal plain and Rhine–Meuse delta, many such map datasets have been compiled over the last two centuries. These mapping materials comprise older and younger legacy datasets, often fragmented over regions. They have been compiled within various research traditions and by various parties, involving geologists, soil scientists, geomorphologists and landscape archaeologists. The maps and datasets summarise overwhelming amounts of underlying data accumulated over the last few centuries, and are therefore valuable for reconstructing past landscapes.

Digital-infrastructure developments have enhanced possibilities for recombining existing and new data over the last few decades, e.g. through GIS solutions such as palaeogeographical base maps, from which multiple derived map products can be generated. Integration of thematic information from various source maps and underlying data is needed to use the accumulated data diversity to its full potential and to answer applied and fundamental scientific questions. Using diverse information to compile or update maps, however, requires awareness of legacy surveying strategies and the state of knowledge at the time the original data and maps were produced. This paper reviews the soil, geological and geomorphological mapping traditions. We evaluate their products, underlying data and the reasoning behind their compilation, focusing on their use in conventional and digital palaeogeographical mapping. This helps get the most out of large quantities of legacy and modern data, a major challenge for surface and substrate digital mapping in the big-data era.

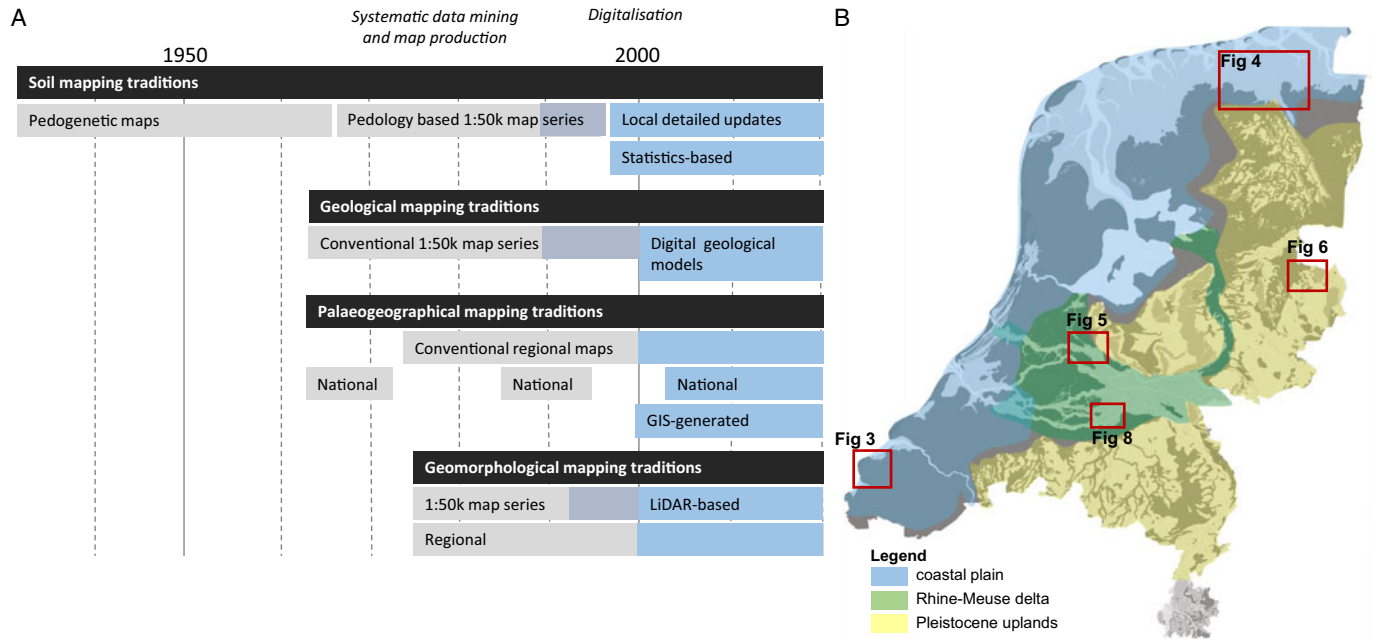
## Introduction

Palaeogeographical maps (series of maps showing the landscape state for distinct time steps) are an effective way to communicate developed insights on landscape evolution (Pons et al., 1963; Zagwijn, 1986; Berendsen & Stouthamer, 2001; Vos, 2015a; Pierik et al., 2016). Palaeogeographical maps have been compiled by various institutes and individuals, often working in parallel over the last few decades (Berendsen, 2007; Van der Meulen et al., 2013). These reconstructions show integrated knowledge from underlying observational data from many local and regional studies. Examples of such input studies are the series of soil maps, geomorphological maps and geological maps on scale 1:50,000 (e.g. Oele et al., 1983) as well as local to regional maps in professional reports, articles and academic theses (e.g. Berendsen, 1982; Weerts et al., 2005; Cohen et al., 2014a,b; Vos, 2015a). These datasets not only carry important information on the substrate, but also on the present and past physical landscape.

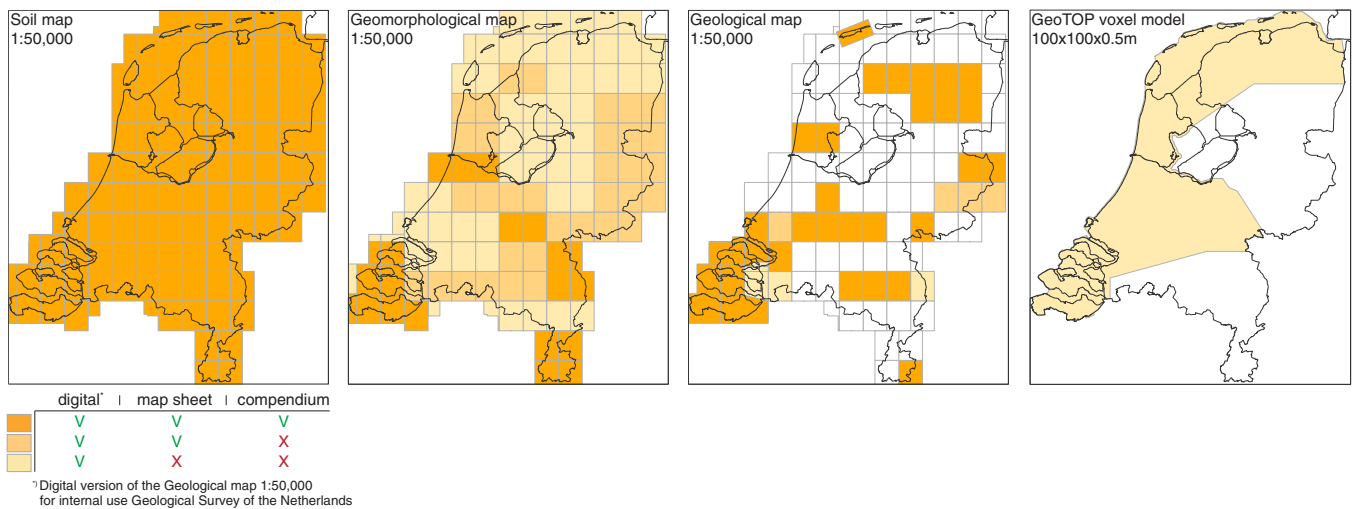
Keeping maps and datasets up to date over time is not a trivial matter. The amounts of underlying data (e.g. borehole logs, seismics, cone penetration tests (CPTs)) is ever increasing as more of it is digitised and shared in open access databases, and new data campaigns are being performed. This is especially apparent in the Dutch delta, where increasing data quantities pose challenges for synchronising and integrating information into digital public datasets and new national maps (Weerts et al., 2005; Berendsen et al., 2007; Van der Meulen et al., 2013; Maljers et al., 2015; Cohen et al., 2017). In order to make this effective, it is important to develop and document transparent and generic workflows for combining existing map datasets and new data.

Applications that rely on soil or substrate, such as landscape archaeology, construction or groundwater quality assessment, benefit from up-to-date synthesised datasets in map format as a starting point, because these summarise vast amounts of underlying data. In addition, large amounts of older analogue source data, on which they have been based, are not always included in digital datasets. This data often has either never been digitised or is simply lost. Furthermore, since

© The Author(s) 2020. Published by Cambridge University Press. This is an Open Access article, distributed under the terms of the Creative Commons Attribution licence (<http://creativecommons.org/licenses/by/4.0/>), which permits unrestricted re-use, distribution, and reproduction in any medium, provided the original work is properly cited.



**Fig. 1.** (A) Timeline of the main mapping traditions in the Netherlands (black bars) and their products (grey produced on paper, grey-blue: digitised analogue maps; blue digitally produced). (B) Landscape subdivision with locations of selected example areas.



**Fig. 2.** Spatial extent of four national mapping programmes.

the legacy datasets were published, many areas have been levelled or overbuilt, destroying the shallow surface or making the areas difficult to access for new field campaigns.

Mapping programmes over the 20th century have resulted in a large coverage of soil surveying and geological surveying map series (Figs. 1 and 2). Many map datasets have been originally created and maintained for applied and generic use, e.g. planning and design, construction, groundwater flow assessment and scientific investigation. In parallel, academic and applied research have yielded a wealth of additional geological data and insights. Over the last few decades these datasets have been digitally produced, while older originally analogue maps have been digitised. These spatial datasets and underlying data, however, vary in theme, scale, spatial coverage, observation density and resolution. It is therefore not always straightforward to combine their

insights. The different themes and primary goals of the maps (e.g. pedological, geological or geomorphological; Fig. 1A), for example, mean that the same features between various maps show different boundaries or conflicting genetic interpretations. Additionally, the older maps were produced during periods when the state of knowledge was less well developed, making it in some cases hard to derive correct reinterpretations. This means that the intake and processing of such datasets into any new digital map datasets requires awareness of the scope and research strategy of the original study, against a background of general knowledge at the time.

Over the last few decades, data management and GIS processing have become more efficient for automatization and uniform treatment of diverse source data (Berendsen et al., 2007; Van der Meulen et al., 2013; Pierik et al., 2016). As data amounts grow and workflows become more powerful and efficient, it remains

**Table 1.** Relative importance of focus points within the mapping traditions; ‘+’ and ‘-’ indicate relative importance of the theme relative to the other mapping programmes. For example, in the Ages column, ‘-’ means that age information was relatively less important, while ‘+’ means it was important to assign the feature to a unit in the legend scheme.

Research tradition	Institute	Direct observations			Inferences from observations			Scope/scale		Period of publication
		Surface morphology	Facies	Stratigraphy	Genesis	Phasing of development	Ages	L = Local R = Regional		
Soil mapping (pedo-genetically based)	STIBOKA	+	++	+	++	+/-	+/-	L	1933–1966	
Soil mapping (pedology-based)	STIBOKA	-/+	-/+	-/+	-/+	-/+	-/+	R	1966–1994	
Conventional geological mapping	GSN	-	-/+	++	-/+	++	++	R	1964–2000	
Geomorphological mapping	GSN + STIBOKA, WUR	++	-/+	-/+	+	-	-	R	1975–present	
Digital geological mapping	GSN, UU, Deltares	-/+	+	++	-/+	-/+	+/-	R↔L	2000–present	
Conventional palaeogeographical mapping	GSN, Deltares	+	++	+	++	+	++	R↔L	1963/1986–present	
GIS-generated palaeogeographical mapping	UU, Deltares	+	++	+	++	+	++	L↔R	2001–present	

STIBOKA = Stichting Bodemkartering (Soil Survey Institute); GSN = Geological Survey of the Netherlands; WUR = Wageningen University & Research; UU = Utrecht University.

important to understand the backgrounds of the combined information sources (including legacy map datasets) to assure quality control. This paper therefore reviews and compares the products of the Netherlands’ physical geographical mapping traditions (Figs 3–6), their underlying data and embedded lines of reasoning, and their original aims and purposes. We mainly focus on their use for Holocene palaeolandscapes reconstructions in coastal and fluvial areas. In these most dynamic areas, incorporating legacy datasets into landscape reconstructions is relatively complicated and currently most well-developed.

### Soil, geological and geomorphological mapping traditions and their products

Before World War II, two series of national geological maps were compiled for the Netherlands (Staring, 1858, at 1:200,000; Tesch, 1942, at 1:50,000). The latter was made by the Geologische Stichting, the precursor of the Geological Survey of the Netherlands. Regional map products were also created, e.g. by Harting (1852: subsurface of Amsterdam) and Vink (1926: western part of the Rhine–Meuse delta, 1:100,000). The years following World War II saw renewed efforts at systematic surveying of the Quaternary geology and soil landscape of the Netherlands. This was performed mainly for agro-economic, hydrological and civil engineering purposes, and executed by several institutions in parallel. The traditions often used combined approaches and have mutually affected each other. Their map products carry different complementary information to include in palaeolandscapes reconstructions. We treat these mapping traditions in order of initiation (Fig. 1A; Table 1) and focus on detailed regional and national maps, generally with a scale of 1:50,000 or smaller. In doing so, we have split up conventional and digital geological mapping, while combining these traditions for soil maps and geomorphological maps into single sections. This is because the former two traditions have put most emphasis on age and stratigraphy, relevant for compiling palaeogeographical maps.

### Soil mapping

From 1933 onwards, Professor C.H. Edelman developed a survey tradition at Wageningen University that combined soil science with geological investigations, organised by the Stichting voor Bodemkartering (STIBOKA – *Soil Survey Institute*). After World War II, extensive mapping programmes were carried out to facilitate large-scale agricultural rationalisation and land consolidations, anticipating increases in population and food demand. The resulting pedogenetical studies aimed to characterise the soil and its parent material (upper 1 to 2 m) in high spatial detail to plan the large-scale rationalisations. In addition to soil type and lithology, these studies documented chronological information, geological–geomorphological evolution, historic land use and archaeology (Table 1). Landscape elements underlying the local soil texture differences, such as coversand ridges, residual channels, alluvial ridges and tidal levees, were mapped accurately with an average density of 8–16 observations/ha (800–1600 obs./km<sup>2</sup>) (Fig. 3A). The soil maps (scales 1:5,000; 10,000; 25,000) are available for various parts of the coastal plain (e.g. Van Liere, 1948; Bennema et al., 1952 – Fig. 3A; Cnossen, 1958; De Smet, 1962), the fluvial area (e.g. Edelman et al., 1950; Pons, 1966 – Fig. 8A, further below) and the Pleistocene sand area (e.g. Pijls, 1948; Schelling, 1955). The mappings were upscaled to regional (province level) between the 1950s and 1970s, e.g. by Pons & Wiggers (1959/60), Van Wallenburg (1966) and Pons & Van Oosten (1974).

In 1966, STIBOKA introduced a new soil-classification system for a 1:50,000 national soil map series (De Bakker & Schelling, 1966; De Bakker, 1970; Schelling, 1970 – Figs 3C, 4B and 6B). Similar to the earlier generation of soil maps, the system focuses on shallow-soil properties (typically to 1.2 m depth); however, it was more strictly based on describing pedological criteria. This marked a shift from geological–geomorphological based map legends to soil units based on pedological criteria (Table 1 – Hartemink & Sonneveld, 2013). These maps were based on dense grids of field observations (pits and corings), logged by specialists (4–8 obs./ha; 400–800 obs./km<sup>2</sup>), and, where present, data behind the earlier generation of soil maps. Borehole locations for

soil profile description were chosen based upon the landscape (hydro)geomorphology, assuming that terrain and groundwater conditions affect soil formation and hence the spatial patterns of the soil map units. Following the same assumption, soil map boundaries partly follow these geomorphological units, which at the time were often more distinct than today. Compendiums made for each map sheet contain a substantial review of the shallow geology, geomorphological evolution and prehistoric and historic human land use. Throughout the 1980s, the research focus shifted more towards applied use (e.g. groundwater and soil quality), and the 1:50,000 series was made digital in 1999. It has received considerable regional updates (2000–2010s) that focused on statistical remapping. It moved away from the map sheet divisions and put more emphasis on underlying soil property data (laboratory measurements and borehole data). This shift towards a more quantitative and reproducible approach facilitated applied research themes, e.g. deterioration of peaty topsoil (Kempen et al., 2009, 2010).

The documentation of the soil-genetic properties and the high spatial resolution of the 1940s–60s legacy soil maps were not often equalled in more recent studies. The national coverage of the 1:50,000 national soil map series (Fig. 2) in digital form is noteworthy (De Vries et al., 2003). For example, these maps clearly show the presence of peatlands, type of peat and the clay extent on top of it, indicating past extents of tidal and fluvial floodbasins. However, the boundaries of the map units were generalised compared to the pre-1966 detailed local surveys (generally 1:5,000–1:25,000 – no national coverage). This means that where these legacy surveys had been performed, details were partially lost in the national soil map. This amount of detail of especially the older generations of soil maps could be achieved because many, nowadays partly lost, borehole data were used, supplemented with geomorphological field observations to draw accurate boundaries. Many mapped elements are not easily traceable anymore in the present-day landscape and in more recent maps, due to mechanised agricultural practices and because extensive areas have been overbuilt.

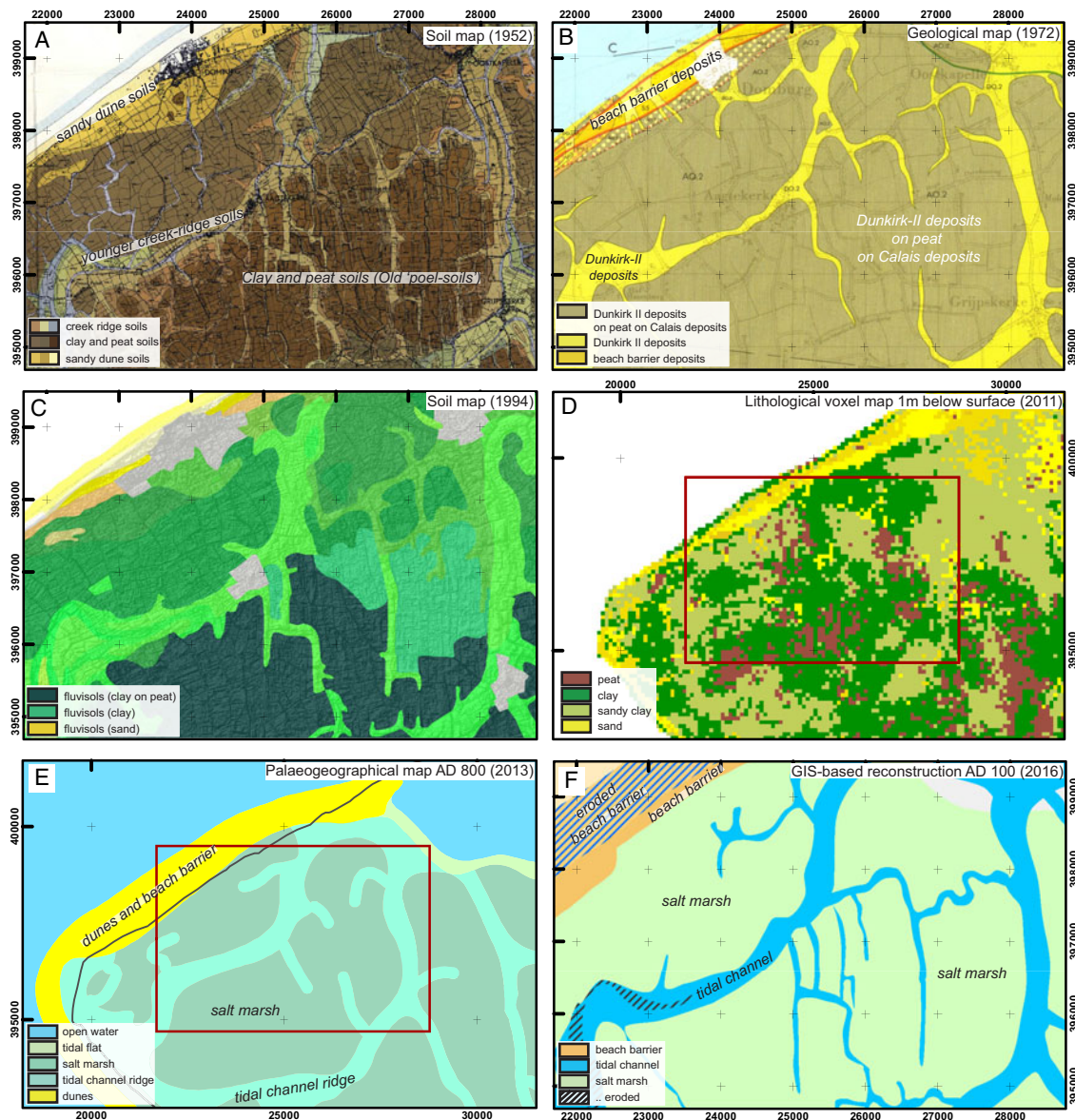
For the above reasons, the legacy soil mapping products – where available – provide relevant accurate information about the presence, age and extent of geomorphological, geological as well as archaeological elements in the landscape (e.g. De Boer et al., 2014). For example, local pedological terms, such as 'knikklei' (Veenbos, 1949) and 'pikklei' (De Roo, 1953) from the coastal plain, were also lithologically described and genetically interpreted, allowing these detailed studies to be used in modern maps. They can for example be translated into geomorphological units (e.g. soil formation in 'heavy' clay that formed as a supratidal flat – Vos, 2015a; Pierik et al., 2016). Another example that demonstrates such interdisciplinary application can be found in the coastal plain, where information on embankment history was incorporated into the soil units. Here, topsoil and subsoil were mapped using chronostratigraphical, geomorphological and pedological criteria combined: the oldest reclaimed areas contain decalcified soils, sandy inversion ridges and clayey supratidal areas; whereas successively younger embanked tidal flats (mostly formed since the Late Middle Ages) have a higher elevation, contain more sand and have soils that have so far remained calcareous (Bennema et al., 1952; Pons, 1965 – Fig. 3A). Although insights progressed over the 20th century, and assigned chronology and geological-geomorphological genesis of the mapped elements often improved in later studies (see next subsection and 'Digital geological mapping' and 'Palaeogeographical research traditions and map

products' further below), the legacy soil mapping products still provide a valuable base for assessing the Dutch substrate because of their detailed nature and multidisciplinary scope.

### Conventional geological mapping

The second series of geological map sheets was produced on a scale of 1:50,000, mainly serving exploration of aggregate resources (e.g. clay, sand, gravel – Faasse, 2002; Westerhoff, 2012). Other goals were to forecast foundation depth for construction (i.e. depth of Pleistocene sands) and to map geohydrological units (aquifers and aquitards). Geological maps of the 1:50,000 series were produced between 1964 and 2000; the programme was ended in favour of a digital mapping approach (see 'Digital geological mapping' below). At that time c.30% of the Netherlands had been mapped (Fig. 2). The shallow subsurface maps were mainly based on hand-drilled boreholes, but in contrast to the workflow for the soil maps, a standard grid of equally spaced boreholes was performed (on average 16 obs./km<sup>2</sup> in the coastal and fluvial lowland area and 9 obs./km<sup>2</sup> in the Pleistocene uplands). Map compilation was further supported by data from deeper boreholes, outcrops, CPTs, existing maps and laboratory analysis (e.g. on pollen, heavy minerals).

The new map series at scale 1:50,000 introduced the use of the so-called profile-type legend to indicate the vertical layering of the upper few metres (Hageman, 1963, 1969). The map legend was primarily inspired by a chronostratigraphical scheme (Table 1), already used at the beginning of the 20th century. This originally lithostratigraphical division had been developed for the Flemish and northernmost French coastal-plain areas by Dubois (1924), Tesch (1930) and Tavernier (1946, 1948) (Fig. 7). It identifies an older and a younger back-barrier clastic unit (the Calais and Dunkirk Members respectively) that in most places was separated by a peat interval. This system was adopted and expanded in the Dutch national geological mapping programme. This classification system evolved with the recognition of multiple transgression sub-phases within the Calais Member (subunits 'I to IV'), and multiple transgression phases in the Dunkirk Member (subunits '0 to III'), separated by non-deposition (i.e. soil development) and organic accumulation. All these clastic and organic layers were included in the Westland Formation (Doppert et al., 1975). With the advent of radiocarbon dating, the transgressive subphases were placed in time by dating the intercalated peat layers. The recognised transgressions were interpreted to be the result of accelerated sea-level rise events. Based on this assumption, these ages were then projected to other areas along the Dutch coast, where similar sequences of transgressive clay and regressive organics were encountered. As insights evolved over the course of the campaign, facies and environmental interpretation (e.g. Dunkirk I; supratidal deposits) were added to the legends in the newly mapped areas in the coastal plain. The presumed sea-level rise fluctuations were used to explain habitation phases in the coastal area (e.g. Louwe Kooijmans, 1974; Behre, 2004). Because these fluctuations were presumed to be climate-driven, the transgressions in the coastal area were thought to match phases of clastic sedimentation in the Rhine–Meuse delta as well (Hageman, 1969). Here, the Gorkum and Tiel Members were identified to correlate with the Calais and Dunkirk Members respectively (Doppert et al., 1975). As radiocarbon-based age-control become more important for the map legend, the originally lithostratigraphic profile-type legend increasingly became chronostratigraphic (Weerts et al., 2005 – Table 1; Fig. 7). The hybrid map legend in fact had become a genetic model, based on the

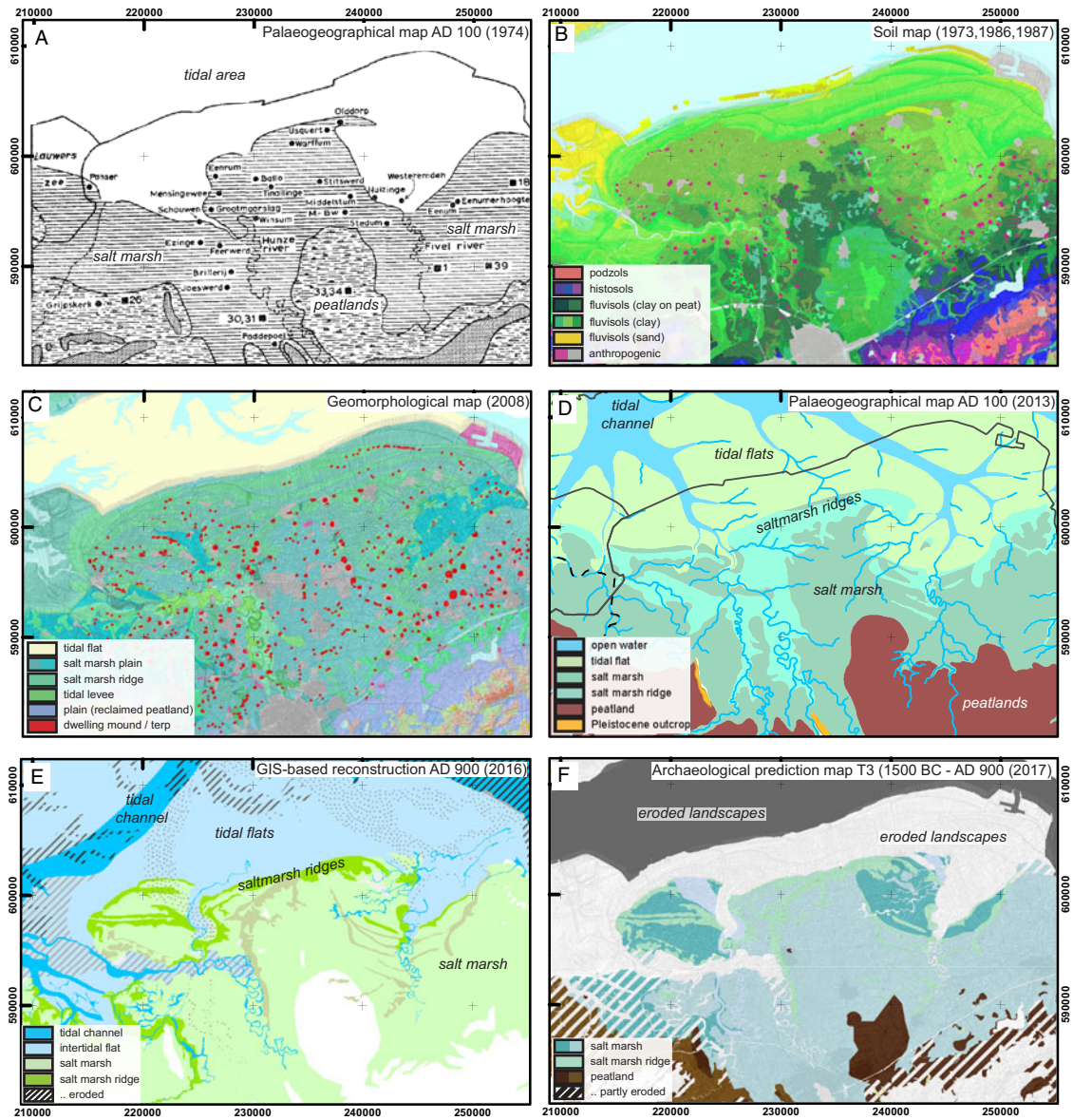


**Fig. 3.** Example area of Walcheren, southwestern coastal plain (for location see Fig. 1B). Behind a narrow beach barrier in the northwest, sandy creeks dissect clayey and peaty floodbasins. Red boxes in (D) and (E) show the extent of (A–C) and (F). (A) Pedogenetic map (Bennema et al., 1952, original scale 1:10,000). (B) Geological map (Van Rummelen, 1972, original scale 1:50,000). (C) Soil map (STIBOKA: Pleijter & Van Wallenburg, 1994; original scale 1:50,000). (D) GeoTOP voxel-model extracted map (Stafleu et al., 2011; 100 × 100 m grid cells), showing the most probable lithology 0.5–1.0 m below the surface. (E) National palaeogeographical map for AD 800 (Vos & De Vries, 2013). (F) GIS-generated palaeogeographical map for AD 800 (Pierik et al., 2016). All maps have Amersfoort/RD new (EPSG:28992) projection.

underlying concept that all tidal inlets along the Dutch coast had responded more or less synchronously to a common marine forcing, i.e. variations in sea-level rise and storm intensity.

As more radiocarbon datings were performed at new sites (Groningen – Roeleveld, 1974; Rhine–Meuse delta – Berendsen, 1984a,b; Zagwijn, 1986; Almere lagoon area – Van de Plassche, 1985; Flemish coastal plain – Baeteman, 1999), evidence accumulated that peat growth and clastic transgression contacts had formed much more diachronically than previously thought. Meanwhile, sedimentological studies revealed the genesis of the beach barrier coast and back-barrier (e.g. Beets et al., 1992; Van der Valk, 1992, 1996; Cleveringa, 2000). It became clear that the alternating clastics and organic beds in the coastal plain had formed as the outcome of more regional interactions between tidal and fluvial processes, storm surges and changing sediment

delivery (Beets & Van der Spek, 2000). The apparent Dunkirk subphases were found to be additionally steered by human interference in coastal peatlands (Vos & Van Heeringen, 1997; Pierik et al., 2017c). In the Rhine–Meuse delta, alternating clastics and organics could be linked to repeated avulsions creating new branches and causing abandonment of older ones. These were driven both from upstream (allocyclic) and internally (autocyclic) (e.g. Berendsen, 1982; Törnqvist, 1993; Stouthamer & Berendsen, 2007). These new insights eventually led to a major revision of the national-scale geological mapping schemes for the Holocene deposits in the late 1990s (Weerts et al., 2000, 2005; De Mulder et al., 2003 – see ‘Digital geological mapping’ below). The choice for a stricter lithostratigraphic scheme brought the national mapping systematics closer to the regional system of Roeleveld (1974) and Griede (1978) (Table 1; Fig. 7) as well as those in Germany (1:25,000) and



**Fig. 4.** Example area in the northern coastal plain (location see Fig. 1B). In the north the Wadden Sea is situated with its tidal inlet channels and intertidal shoals. In the south, supratidal flats and flanking marsh and peatlands are present. (A) Palaeogeographical reconstruction 2000 BP of Roeleveld (1974). (B) Soil map (STIBOKA, 1973; Clingeborg, 1986; Kuijer, 1987, original scale 1:50,000), Dutch soil classification system translated to the main units of the World Reference Base for Soil Resources classification. (C) LiDAR-based geomorphological map (Koomen & Maas, 2004, original scale 1:50,000). (D) Palaeogeographical map for AD 100 (Vos & De Vries, 2013). (E) GIS-generated palaeogeographical map for AD 900 (Pierik et al., 2016). (F) GIS-generated landscape time-slice map (T3: 1500 BC to AD 900; Cohen et al., 2017).

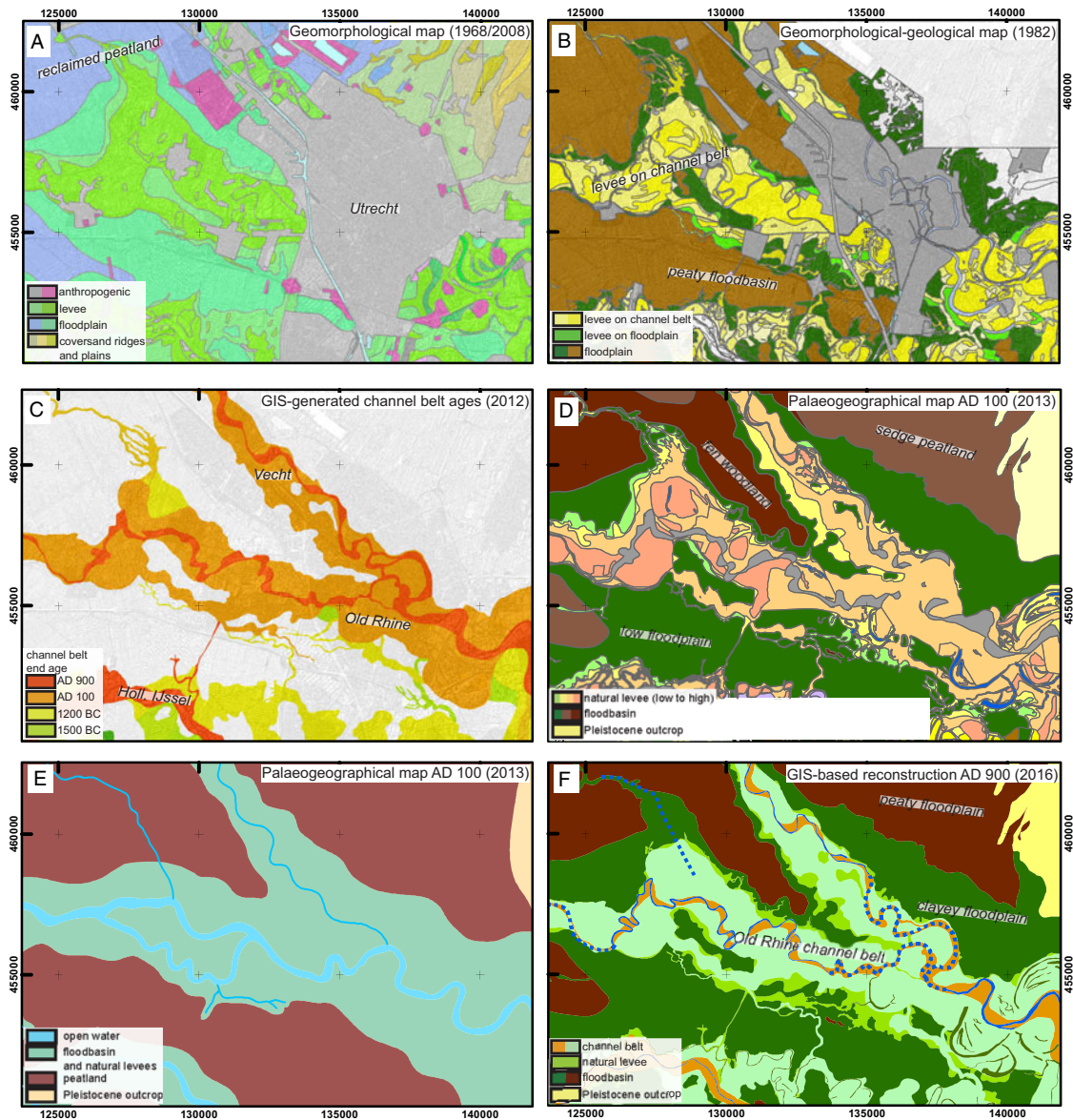
Belgium (1:50,000 – Baeteman, 2005). In these countries, a stricter lithostratigraphical system was applied based on Barckhausen et al. (1977), with profile-type legends showing alternating clastic and organic layer sequences. These systems were neutral regarding absolute ages and superregional phase correlation. Based on the insights on avulsion, an opposite move was made for mapping the Holocene Rhine–Meuse delta. Instead of using a geological–geomorphological profile-type legend (Berendsen, 1982 – next subsection), new maps became more strongly focused on age (Berendsen & Stouthamer, 2000, 2001 – ‘Digital geological mapping’ below).

Compared to soil and geomorphological national map series, the profile-type legends of the geological map sheets depict the shallow substrate to a greater depth (5 to 20 m). For the Holocene coastal plain, the geological map sheets form a consistent dataset

displaying the planform geometry of Holocene generations of tidal architectural elements and their chronology (Fig. 3B). Their reuse in landscape reconstructions is particularly straightforward for the more recent map sheets on which distinct lithofacies (those of channel deposits, tidal flat deposits, etc.) were mapped separately. When using older map sheets and their compendiums, age-attributions need to be re-evaluated incorporating newer data (e.g. using  $^{14}\text{C}$  dates, optically stimulated luminescence (OSL) and archaeological finds – see Pierik et al., 2016).

#### Geomorphological mapping

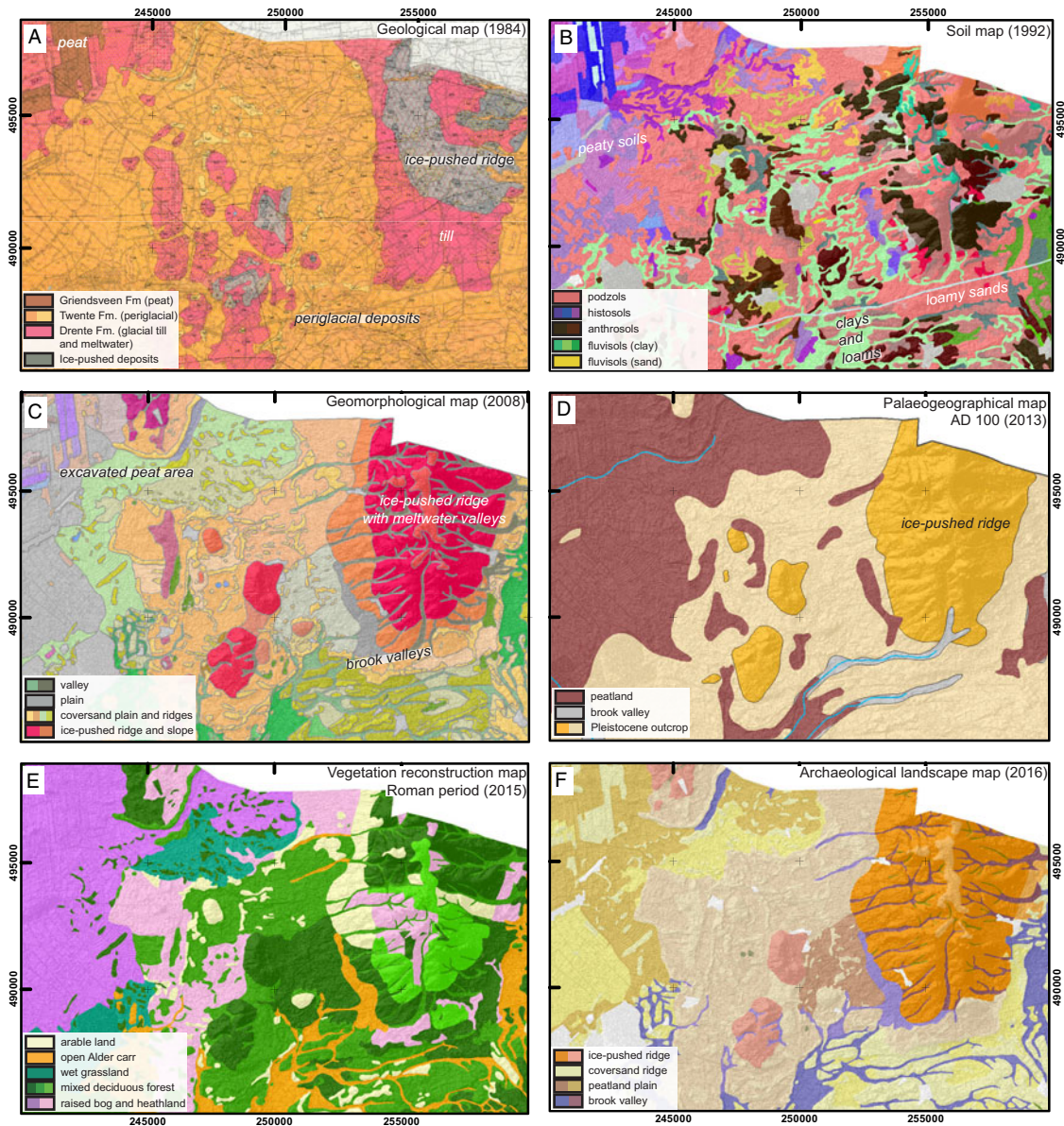
Geomorphological maps principally show the relief (shape, elevation, slope) of the landscape and additionally contain information about landscape genesis on a general level (e.g. aeolian dune,



**Fig. 5.** Example area in the Rhine delta around Utrecht (location see Fig. 1B). The Rhine channel belt splits in a western and northwestern branch; flow direction is towards the west (left). The channel belt is flanked by floodbasins filled with clay and peat. (A) Geomorphological map (Koomen & Maas, 2004, original scale 1:50,000). (B) Regional geomorphological-geological map ('geomorphogenetical map' (Berendsen, 1982); digitised version, original scale 1:25,000). (C) GIS-generated channel-belt age map (Cohen et al., 2012). (D) Regional palaeogeographical map for AD 100 (Van Dinter, 2013, original scale 1:50,000). (E) National palaeogeographical map for AD 100 (Vos & De Vries, 2013). (F) GIS-generated palaeogeographical map for AD 900 (Pierik et al., 2017a,b).

natural levee, beach ridge) (Table 1). Between 1975 and 1993, 1:50,000 map sheets have been published in a joint effort of STIBOKA and the Geological Survey of the Netherlands (Ten Cate & Maarleveld, 1977), achieving a coverage of *c.*60% of the country (Fig. 2). Because geomorphology reflects both soil and geological conditions, both the geological and soil mapping programmes were to benefit from this (Van den Berg, 2012). The maps were based on elevation survey maps (0.1 m intervals – *Meetkundige Dienst* 1942–83; scale 1:10,000), aerial photography (Von Frijtag Drabbe, 1954), existing soil and geological maps (see 'Soil mapping' above), and supplementary observations from dedicated field surveys (Koomen & Maas, 2004). In the early 2000s, LiDAR imagery (*AHN* – 1 × 1 m to 5 × 5 m footprint; cm-scale vertical resolution) was used to complete the mapping campaign on a national level (Koomen & Maas, 2004 – Figs 4C,

5A and 6C) and create updates (Van der Meij, 2014; Maas et al., 2017). The use of LiDAR allowed the maps to become more accurate and detailed, while at the same time the digital geomorphological map product allowed larger-scale regional patterns to be queried and visualised (Koomen & Maas, 2004). The digital geomorphological map became widely applied in geoarchaeological studies, landscape planning (e.g. Rensink et al., 2016 – Fig. 6F) and nature recovery projects. The LiDAR-updated areas, especially, have detailed map boundaries and genetic interpretations of surface features that are useful to conform to in palaeogeographical maps. Examples are tidal channel alluvial ridges, supratidal channels and levee relief in the coastal area (Fig. 4C), natural levees in the Rhine–Meuse delta, and coversand ridges and brook valleys in the Pleistocene uplands (e.g. Rensink et al., 2016; Cohen et al., 2017).



**Fig. 6.** Example area of Twente (eastern Pleistocene sand area; for location see Fig. 1B), containing periglacial deposits and morphology, ice-pushed ridges, brook valleys and (mostly removed) fen peats. (A) Geological map (Van den Berg & Den Otter, 1993, original scale 1:50,000). (B) Soil map (STIBOKA: Ebbers & Van het Loo, 1992, original scale 1:50,000), Dutch soil classification system translated to the main units of the World Reference Base for Soil Resources classification. (C) LiDAR-based geomorphological map (Koomen & Maas, 2004, original scale 1:50,000). (D) National palaeogeographical map for AD 100 (Vos & De Vries, 2013). (E) Vegetation reconstruction for the Roman period (Van Beek et al., 2015). (F) Archaeological Landscape map (Rensink et al., 2016).

In parallel, Berendsen (1982) developed a profile-type legend for a geomorphological–geological map (‘geomorphogenetical map’) of the Holocene deltaic and flanking Pleistocene landforms in the central Netherlands (100–200 obs./km<sup>2</sup> from borehole data by students; 1:25,000; Figs. 5B and 8B). Its hybrid system primarily used landform classifications, supplemented with lithofacies successions in the upper 2 m, using a profile-type legend (Figs. 5B and 8B) and a hatching indicating relative age of alluvial ridges. Those additions facilitated a more detailed breakdown of genetic processes and chronology of deltaic landforms, compared to the national geomorphological map series. The profile-type geomorphological maps resolved spatial continuity and position of different genetic elements of meandering river channel belts, i.e. channel bar sand, natural-levee deposits, distal floodbasin clays, and residual infill deposits of abandoned channels (Fisk, 1947;

Allen, 1965). They also display successions of features: e.g. floodplain deposits on levee deposits on channel belt deposits, or multiple channel belts generations within the upper 2 m below surface. The detailed information on architecture, lithofacies and chronology facilitates digital reuse for (hydro)geological applications (e.g. Bierkens & Weerts, 1994), geological–geomorphological overview maps (Berendsen & Stouthamer, 2001) and detailed regional palaeogeographical landscape reconstructions (Van Dinter, 2013; Pierik et al., 2017a,b; Fig. 5D and F – see ‘Palaeogeographical research traditions and map products’ below).

#### Digital geological mapping

From the 1980s onwards, borehole data underlying shallow geological mapping had been increasingly digitised (e.g. Van der



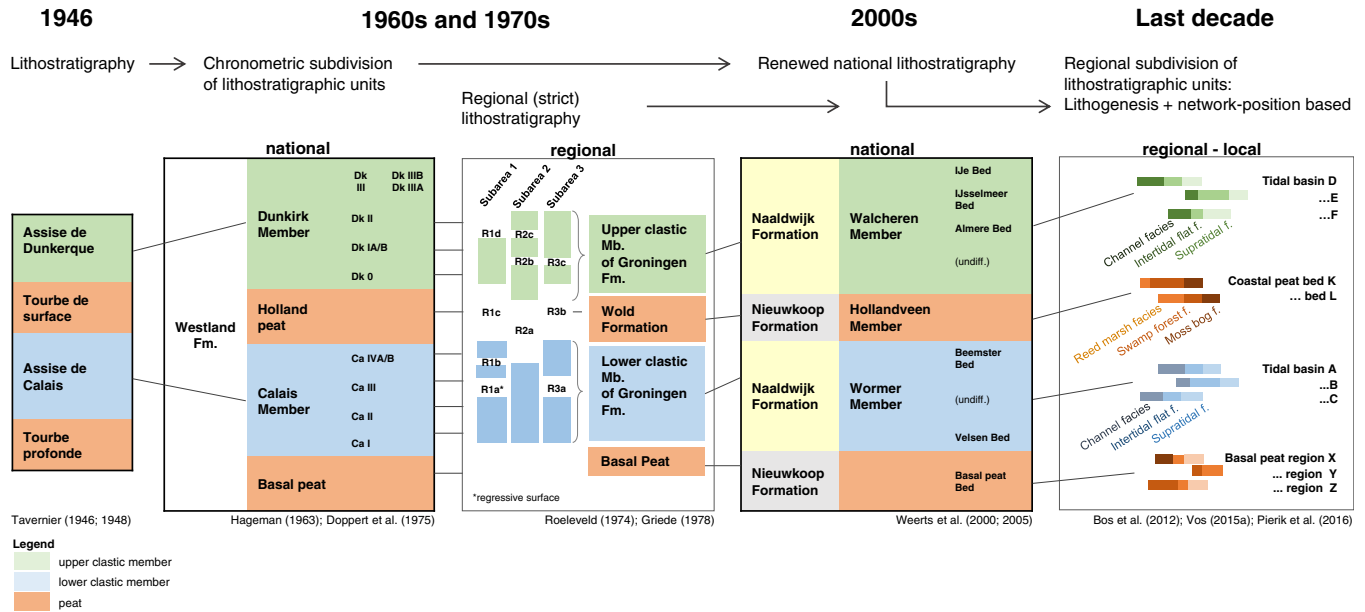
Meulen et al., 2013). By 1997, this led to the launch of the national DINO database and web portal (Data and Information of the Netherlands' Subsurface), at that time including 400,000 bore logs, collected by the Geological Survey. This not only made the underlying data more readily available, it also allowed systematic querying yielding new possibilities for converting geological data to construct maps for geological, hydrogeological or geotechnical purposes. The database queries aided the incorporation of field data and legacy maps into new map products, because by rearranging the data, manually tracing feature outlines became faster and more reproducible. Following more uniform and automated workflows, digital layer-stack models were created and maintained (DGM: Digital Geological Model; REGIS: hydrogeological model – Vernes et al., 2005; Stafleu & Busschers, 2012; Gunnink et al., 2013) and fully 3D voxel models (GeoTOP: subsurface model of the upper 30–50 m at  $100 \times 100 \times 0.5$  m resolution – Fig. 3D; Stafleu et al., 2011, 2012). The voxel attribute precision has been geostatistically quantified and is included in the model (Maljers et al., 2015; Stafleu et al. 2019). Over the last decade, the shallow subsurface 3D mapping products have become widely used by regional authorities and companies. The models have been implemented for inventories of aggregate resources (e.g. Van der Meulen et al., 2005, 2007; Maljers et al., 2015), as schematisation input for groundwater flow modelling and salt penetration (e.g. Delsman et al., 2014), and as input to quantify soft subsoil geotechnical strength and susceptibility to subsidence (e.g. Koster et al., 2018a,b). The geological mapping contained in these models is most highly resolved and most accurate in the upper metres, initially comparable to that in the older conventional geological map series ('Conventional geological mapping' above). Accuracy in revisions is improving as more field data, such as CPTs and seismic data, are included. Additional developments are integration with the DGM and REGIS models and making local models of higher resolution (e.g.  $25 \times 25 \times 0.25$  m; Stafleu et al., 2019).

In the workflow to compile layer and voxel models, first, lithological intervals in boreholes were assigned a lithostratigraphical unit. Next, the upper and lower limits were interpolated between neighbouring boreholes (Stafleu et al., 2012). For the first step, stratigraphical interpretation of existing borehole data was needed that so far had only been performed for occasional manually well-described boreholes. To automatically assign lithostratigraphy to more boreholes on a larger scale, clear new lithological and stratigraphical criteria were needed. Therefore, a new stratigraphical subdivision of the Netherlands was deemed essential (Westerhoff et al., 2003; Stafleu et al., 2011; Van der Meulen et al., 2013). At the same time, this would solve the problems with the previous scheme, based on false suggestions of super-regional synchronicity ('Conventional geological mapping' subsection above). Hence, the national stratigraphic nomenclator was considerably revised in 2000 (Weerts et al., 2000, 2005; Ebbing et al., 2003; TNO, 2013). The new scheme was more strictly lithostratigraphic and was cleared of any intermixed chronostratigraphic conceptual knowledge. The revision was executed in line with International Stratigraphic Commission guidelines (Salvador, 1994). These recommend using mappable units and criteria on geographical extent and position of architectural elements, independently from any chronostratigraphical reasoning. In this way, the development to move to digital map production and geomodels after the late 1990s coincided with the trend towards a more strictly lithostratigraphic borehole data classification and map legend schemes (Table 1; see 'Conventional geological mapping' above).

The 2000s lithostratigraphic scheme reassigned all clastic coastal plain deposits (barrier and back-barrier deposits) to the Naaldwijk Formation (Fig. 7) and reassigned all coastal plain organic deposits to a separate formation (Nieuwkoop Fm.). Within the clastic Naaldwijk Fm., the Wormer Member and Walcheren Member were introduced as two formal Members, replacing the former Calais and Dunkirk Members respectively. This retained the originally adopted (pre-radiocarbon-dating) division into an older and a younger back-barrier clastic unit (Fig. 7), but removed all temporal subphase divisions within them. Beach-barrier and coastal dune sands (Zandvoort and Schoorl Members respectively) became part of the Naaldwijk Fm. as well. The renewed scheme also dropped the Gorkum and Tiel Members in the lower Rhine–Meuse delta, and reassigned these to the Echteld Fm. Within this formation, distinction was now made between genetic units (e.g. channel belt, overbank deposits), adopted from Berendsen (1982) and Weerts (1996 – see 'Geomorphological mapping' above). For the central Netherlands lagoon – a major inland water body, of which great areas were reclaimed in the 20th century (former Zuiderzee) – three regionally mappable units were retained in the 2000s scheme, as Beds within the Walcheren Member. This served to continue to allow the distinction between freshwater deposits of the Almere lagoon-precursor stage (e.g. Almere Bed) and younger brackish deposits within (Zuiderzee Bed, lagoon floor clastics) and associated deposits around the lagoon (IJe Bed, storm overwash clays).

The focus on lithostratigraphy and 3D modelling meant that the current stratigraphic nomenclator for the subsurface of the Netherlands has no chronostratigraphic subsections (TNO, 2013). This means that, as with the conventional maps, additional information is still needed to correctly interpret landscape features and chronology from GeoTOP voxel models. Therefore, parallel geological mapping studies have to be consulted when age information is needed. Age information is, for example, relevant for the fields of natural and cultural heritage. This concerns national-scale map products (e.g. Deeben et al., 2008; Vos et al., 2011), but especially products on a municipal scale, where heritage management maps have a legal status (e.g. Vos et al., 2007, 2017; Lauwerier et al., 2017; Moree et al., 2018). The implementation of the Valletta Treaty on cultural heritage intensified archaeological fieldwork activities in construction projects. To reconstruct past landscapes and assess the archaeological potential of the substrate, this called for more detailed shallow geological mapping and age attribution. These studies in turn generated new data and insights, relevant for updating palaeogeographical reconstructions and geological and geomorphological research.

In the light of these developments the national lithostratigraphic scheme is used as the framework for more refined mapping on a regional and local scale (e.g. in description of exposures, palaeogeographical and geoarchaeological studies in the coastal plain (e.g. Vos et al., 2007, 2017; Vos, 2015a) and in the Rhine–Meuse delta (e.g. Gouw & Erkens, 2007; Pierik et al., 2017a,b; Van Renswoude & Habermehl, 2017)). These studies generally identify 4–10 successive clastic strata within the upper 2–3 m (Fig. 7). To identify and label the consecutive strata, they are first distinguished based on sedimentological characteristics (lithofacies) that can be coupled to a specific depositional environment (e.g. sandy deposits from intertidal flats or clayey deposits from a supratidal flat). These identified strata are then laterally traced and linked to a nearby parent tidal or fluvial channel system that delivered the sediment.



**Fig. 7.** Timeline of stratigraphical division schemes in Holocene coastal geological mapping. Coastal plain stratigraphy along the Southern North Sea generally comprises basal peat, mid-Holocene clastics, intermediate peat and an upper clastic unit. This subdivision was first made for the Flemish and French coastal plain, adopted for the Netherlands and expanded with a chronometric subdivision in the 1960s and 1970s. Regionally more strict lithostratigraphical subdivision was used in the northern Netherlands, as well as in Flemish and German geological mapping. In the new millennium, chronometric subdivision was abandoned again in favour of a renewed national lithostratigraphy. As more detailed mapping occurred, mainly resulting from archaeological research, regional subdivisions of clastic members were introduced based on facies and network position (i.e. tidal system generation).

In this way, it becomes possible to connect a dated salt marsh deposit to a tidal inlet with a so far unknown age, or a distal crevasse splay deposit to a meandering river branch with known ages. This spatial approach had earlier been performed on a regional scale in the Rhine–Meuse delta (Berendsen, 1982) and in the coastal plain (e.g. Vos & Van Heeringen, 1997). Applying this refinement in geological studies is increasingly becoming possible as the state of geological mapping in the Netherlands is becoming sufficiently advanced (with more open data and GIS techniques) to identify and trace deposits over large areas. This opened the way to upscale geological and palaeogeographical map products to superregional and national scales (next section – e.g. Berendsen et al., 2001, 2007; Vos, 2015a; Pierik et al., 2016, 2017a,b – Figs 3E, F and 4D). In this way, the legends of the local and regional geological maps in the coastal and delta plain have become hybrid again: ages are tied to locally to regionally recognised lithostratigraphic units, which are named and labelled in the national framework schemes. The GeoTOP voxel-models directly use the channel generations mapped in these geological age-mapping studies in the coastal and fluvial areas (‘GIS-generated palaeogeographical mapping’ below – e.g. Berendsen & Stouthamer, 2001; Cohen et al., 2012). These serve to steer the spatial boundaries and vertical position of five different generations of fluvial and tidal channel belt systems in the substrate (Stafleu et al., 2011; Maljers et al., 2015). Vice versa, the geomodelling workflows can reveal geological elements that had not been outlined in geological maps before (e.g. Busschers et al., 2013; Schokker et al., 2015) and hence allow updating of geological age and palaeogeographical maps.

In summary, since the early 2000s we have seen stricter lithostratigraphic subdivisions of the substrate to support geomodelling workflows for novel national-scale 3D geological mapping products (Table 1). Besides lithostratigraphic identification, geological

mapping on regional and local scale saw a considerable effort in administering ages and lateral tracing of the Holocene subsurface features (Fig. 7).

### Palaeogeographical research traditions and map products

As more chronological data became available from the 1960s onwards, the research focus began to shift from the current state of landscape and substrate, to transient reconstructions of landscape evolution and identification of the formative processes involved (Table 1; Fig. 8). Over the last few decades, the overall accuracy and resolution of these maps have increased and they became increasingly useful for harvesting insight on rates of geomorphological processes and the extent over which they occur. The reconstructions are typically thematic, i.e. limited to selected aspects of landscape evolution (e.g. evolution of river network configuration – Berendsen & Stouthamer, 2001; evolution of coastal environments – Vos et al., 2011).

The task of making palaeogeographical maps requires the makers to produce a full 2D coverage of the landscape reconstructed for given moments in time, while the available or accessible data and knowledge on landscape development may neither cover the entire area nor be evenly distributed. Compiling palaeogeographical map series requires high data densities on the present state of the substrate (extent, facies interpretation and age of units), preferably evenly spread over the mapped area. To compile maps from the data, interpretations inferred from underlying direct observational data are often made (such as borehole logs, outcrop drawings,  $^{14}\text{C}$  dates and archaeological finds). In addition, landform inheritance and preservation have to be assessed, as well as parts of the landscape that have not survived later erosion (Berendsen et al. 2001, 2007; Cohen et al., 2014a,b, 2017; Vos, 2015a). This means

that assumptions on the rate and spatial extent of geomorphological processes are needed to fill in those gaps. These assumptions, however, have not always been straightforward and data and insights may have been updated since the compilation effort. This means that using palaeogeographical reconstructions as input for new analyses requires evaluation of the age control and environmental interpretations of the originally available source datasets. This is especially important when these reconstructions are used to quantify rates of geomorphological processes. Such assumptions may already have been included in their compilation, feeding the risk of circular reasoning. Therefore, documentation of the input data and reconstruction workflow is crucial.

When describing the production workflow, map makers often list the materials taken into consideration, mention principles on weighing decisions and indicate spatial differences in accuracy (e.g. Vos, 2015b). Documentation of the steps in producing palaeogeographical map series, however, is often brief and implicit. Below we describe three general types of decisions needed to make any palaeogeographical map series:

- 1) Each encountered preserved landform or architectural element has to be translated to a legend entry of the palaeogeographical map, e.g. a depositional environment or landscape zone at the considered time step. For example, a superficial clay bed with sandy interlayers, some marine shell storm beds and a tilled soil can represent a salt marsh landscape zone in a map for 2500 years ago or an embanked floodplain 800 years ago.
- 2) Blank areas within palaeogeographical maps are undesirable, and therefore non-preserved landscape elements have to be reconstructed with the best possible surrounding data and assumptions. This includes later eroded or less well-mapped areas (Vos, 2015b). To fill such gaps, surviving broadly contemporary evidence in its surroundings is used, combined with considerations of geomorphological processes that formed these. The compiler may presume elements to have formed diachronically, and to have gradually migrated sideways.
- 3) The maker of the map series has to decide the time steps for which the maps will be made. A data-driven argument can be made that over the period from which features are better preserved and have allowed for more precise age control, the map series can encompass relatively short time intervals. This decision furthermore depends on the purpose of the maps. Archaeological management parties that solicit these products generally attribute greater relative importance to archaeological and historical periods in landscape evolution narratives (e.g. Bazelmans et al., 2012). From a geomorphological point of view, the desired interval spacing depends on the time span of the targeted geomorphological process. For example, tidal inlet dynamics or river avulsion may take place at different timescales (centuries to millennia) than post-glacial marine transgression (millennia), or peat bog expansion or land reclamation by humans (decades to centuries). If the time steps between consecutive reconstructions are made too large, the evolution of fast-evolving features may be missed and cannot be quantified from the map series. Incorporating more time steps would overcome this. In the case of conventional maps, the amount of required expert labour poses practical limits to this, because maps have to be redrawn manually for each time step.

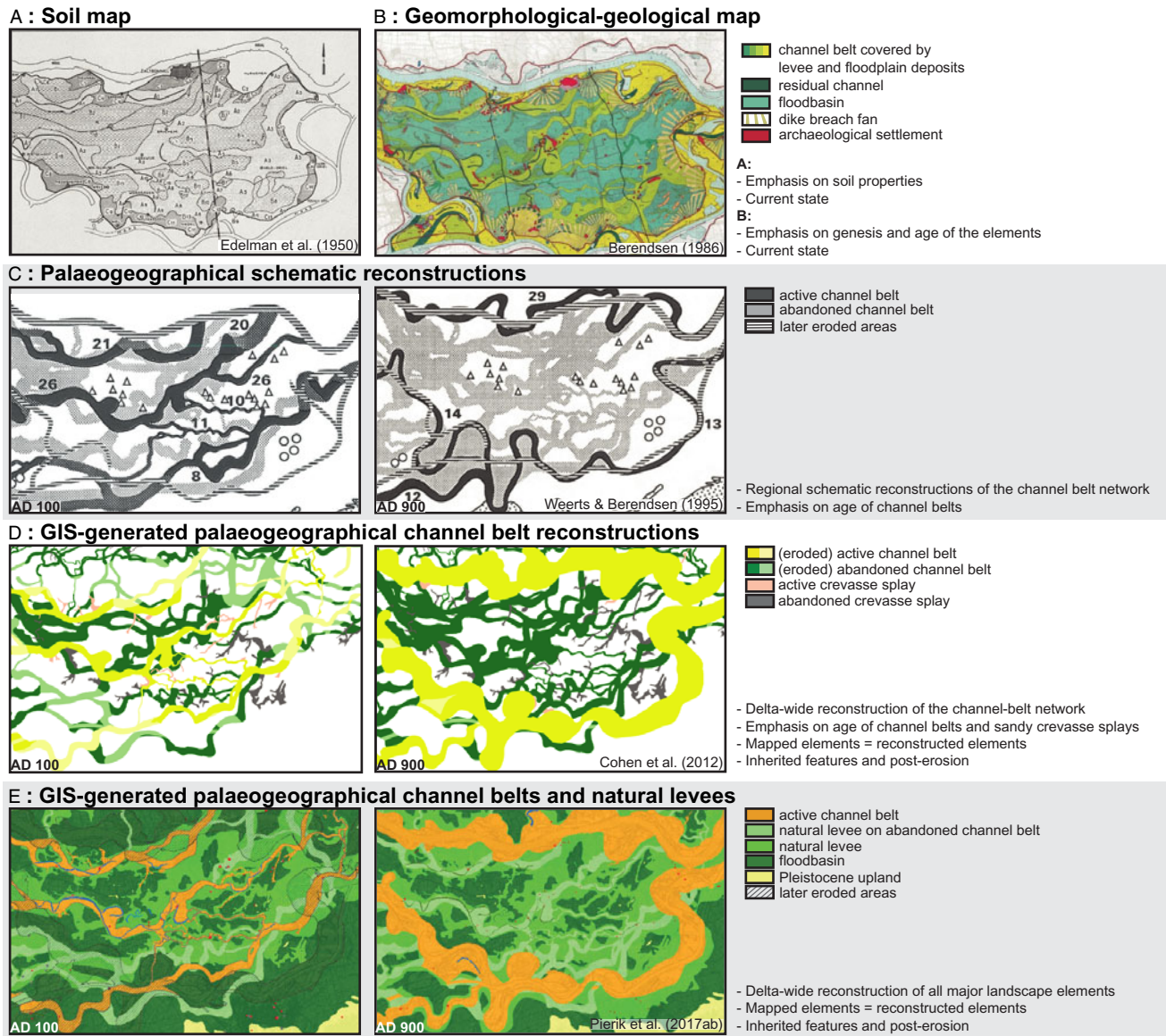
Preserved landforms were generally taken or redrawn from national soil, geomorphological or geological maps. Spatial differences in the mapping accuracy of underlying datasets will affect palaeogeographical map products (e.g. deeper features from geological maps that have no national coverage). For local and regional maps, these boundaries generally have the same accuracy as these source datasets. Reconstructed (i.e. non-preserved or diachronic; decision 2) features have less accurate boundaries. For transparency these could be separately indicated on a map to show which parts of the landscape have been preserved, and which parts have not and are hence less accurate.

Data density from preserved deeper features (middle Holocene tidal or fluvial landscapes) is generally smaller than for shallow features. This, however, does not always mean that younger periods can be more accurately mapped than older periods. This is because in both the Holocene and in Pleistocene parts of the country, superficial young landscape elements have been lost through erosion, oxidation and human action. This means, for example, that diachronic peatland loss owing to Late Holocene tidal incursions (Vos & Knol, 2015; Vos, 2015a; Pierik et al., 2016) is not substantially more or less difficult to reconstruct than middle-Holocene diachronic build-up of currently lost peatlands across the Pleistocene uplands. Also, preservation and data penetration of early and middle Holocene deposits at 4 to 15 m below the coastal plain is generally sufficient to identify main features. These generally are well-preserved (e.g. Hijma & Cohen, 2011; Ten Anscher, 2012) and allow more accurate reconstructions than inland counterpart areas with shallower and poorer preservation (e.g. Cohen et al., 2017).

In this section, we discuss conventional manually drawn and digital GIS-generated palaeogeographical mapping techniques. Both traditions have seen more development for the coastal and fluvial area, the most dynamic and complex landscapes during the Holocene.

### *Conventional palaeogeographical mapping*

The first manually drawn palaeogeographical maps covering the full Dutch coastal plain were compiled as a series of text figures by Pons et al. (1963), and a second national generation was established by Zagwijn (1986). In both publications, the selected time steps in the reconstructions coincided with the then presumed-synchronous transgression periods (see 'Conventional geological mapping' above). More detailed map series with regional coverage have also been made, often for geoarchaeological research and typically with a primarily geomorphological legend. Examples are Knol (1993 – northern Netherlands), Lenselink & Koopstra (1994 – central and northwestern coastal plain), Willems (1986 – upper Rhine delta) and Van Dinter (2013 – lower Rhine delta, Fig. 5D). Thematic palaeogeographical reconstructions – channel belt network maps – were made to study maps of channel belt evolution in subregions of the Rhine delta, e.g. text figures in Berendsen (1982: SW Utrecht) and Weerts & Berendsen (1995: Bommelerwaard – Fig. 8C). In the late 1990s, progress in digital mapping techniques and combined geomorphological and archaeological interest in resolving channel belt ages resulted in first the GIS-generated map series of the Rhine–Meuse delta channel belt network (see 'Digital geological mapping' above; Berendsen & Stouthamer, 2001; Cohen et al., 2012 – Figs 5C and 8D). More regional palaeogeographical map series were



**Fig. 8.** Map generations for the Bommelerwaard example area (southern part of the Rhine–Meuse delta; see Fig. 1B). (A) Soil maps of Edelman et al. (1950) and (B) profile-type maps of Berendsen (1986). (C) Schematic reconstruction of channel belt activity by Weerts & Berendsen (1995). (D) GIS-generated reconstruction with focus on network history (Cohen et al., 2012, update of Berendsen & Stouthamer, 2001). (E) GIS-generated reconstruction, added focus on natural levees (Pierik et al., 2017a,b).

compiled resulting from accumulated field surveys and (Malta-driven) archaeological studies. Examples across the coastal and fluvial area are Vos & Van Heeringen (1997 – Zeeland), Cohen et al. (2009 – Gelderse IJssel), Ten Anscher (2012 – Noordoostpolder), Vos & Knol (2015 – northern Netherlands and German Wadden coast) and Van Zijverden (2017 – West Frisia). In turn, these regional maps were used to update superregional- and national-scale palaeogeographical maps between 2006 and 2011 (Vos, 2006; 2015a; Vos et al., 2011; Vos & De Vries, 2013 – Figs 3E, 4D, 5E, 6D). For Germany, Vos & Knol (2015) expanded their reconstructions along the Lower Saxonian coast, partly based on coastline reconstructions by Behre (2004). For the Flemish coastal plain, regional coastal reconstructions also exist (Baeteman, 1999 – IJzer valley; Mathys, 2009 – offshore; Missiaen et al., 2016 – Scheldt Valley).

To upscale local and regional studies into a map series with national coverage, Vos et al. (2011) prioritised high-quality

geological and archaeological information obtained from a selection of the most intensely studied sites (coastal-plain ‘key sites’, cf. Vos, 2015b). The national lithostratigraphy was often refined locally here as a framework to place dating information (see also ‘Digital geological mapping’ above). The landscape between these key sites was reconstructed using surface topographic datasets (LiDAR data; historic topographic maps) and often relies on earlier generations of geological and geomorphological mapping (Fig. 7). For the coastal plain with its complex history of shifting tidal inlets, this workflow significantly upgraded the resolution of the palaeogeographical maps compared to precursor series of the 1960s–80s. In the Rhine–Meuse delta, existing geomorphological and palaeogeographical map outlines (including Berendsen & Stouthamer, 2001 – see next subsection) were retraced in the national palaeogeographical maps. Across the Pleistocene uplands, phases of expanding and deteriorating inland peat cover were included (Leenders, 1996; Spek, 2004; Van Beek, 2009). The boundaries

from the geological and geomorphological national- and regional-scale maps were often generalised for the national-scale maps (scales 1:1,000,000 to 1:500,000), yielding a lower positioning accuracy relative to that of the diverse source data considered (e.g. Figs 3E, 5E and 6D). The conventional palaeogeographical maps are manually produced visualisations of past landscapes, created for predetermined time steps. Time series of palaeogeographical maps are generally visualised for specific periods (Roman period, Early Middle Ages, etc.) and encompass typically shorter time intervals for the youngest millennia.

### GIS-generated palaeogeographical mapping

Digital GIS methodologies introduced since the 1980s greatly improved the capacity to manage overloads of data because they allow faster map drawing, correction and visualisation. They facilitate (i) collecting and managing large amounts of data in digital databases; (ii) performing bulk calculations on the collected data; and (iii) generating reproducible maps automatically using scripting and map-algebra.

Analogue geological, geomorphological and soil maps have been digitised for the first decades of GIS use (Fig. 1), opening up the possibility to apply spatial analysis of the conventionally mapped units (e.g. soil and hydrological properties). Regarding automation techniques behind mapping workflows, 3D geomodelling at the Geological Survey (Van der Meulen et al., 2013) was an important development (see 'Digital geological mapping' above). The GeoTOP voxel model, for example, is produced in a long chain of multiple scripts that use borehole databases and maps as inputs, besides applying some manual steps on input data preparation and result inspection (Stafleu et al., 2011). Also in palaeogeographical reconstructions of the Rhine–Meuse delta, GIS techniques for feature editing, database management and workflow automation were used relatively early (Berendsen et al., 2001; 2007) (dataset release v1: Berendsen & Stouthamer, 2001; v2: Cohen et al., 2012). This scripted workflow generated age-based geological–geomorphological maps (Fig. 5C) and map time series of channel belt network evolution (i.e. palaeogeography) as output (Fig. 8D). Over the period 2011–16, its coverage was expanded to pre-deltaic valley landforms (Cohen et al., 2012; Woolderink et al., 2018) and the Netherlands coastal plain outside the Rhine–Meuse delta (Pierik et al., 2016). Other datasets following the scripted age-query procedures are the geoarchaeological predictive maps for the embanked floodplains (Cohen et al., 2014b) and the buried Holocene landscape dataset (Cohen et al., 2017 – Fig. 4F). All these workflows broke with the earlier profile-type based Holocene mapping traditions and legend designs, but still used them as input ('Conventional geological mapping' and 'Geomorphological mapping' above).

The GIS-generated palaeogeographical mapping workflow essentially treats palaeogeographical output maps as a recombination of selections of geological–geomorphological elements containing numeric age information (Berendsen et al., 2001, 2007; Cohen et al., 2012, 2014b, 2017; Pierik et al., 2016). Considering data management, it was therefore aimed to (i) manually maintain as few map layers as possible, and (ii) split and recombine input map layers using scripts to generate the desired map output for any list of time steps (Berendsen et al., 2007; Pierik et al., 2016). This information is stored in one or more manually maintained digital layers ('base maps'). For the coastal area datasets, feature outlines are imported into the base maps from established geological, geomorphological and soil maps. Apparent differences

between competing source data are compared and optimised using LiDAR and borehole descriptions. For the fluvial area, borehole and LiDAR data (Berendsen & Volleberg, 2007) are used to trace feature outlines. Ages are encoded as begin and end ages in a linked catalogue database, from which time series maps can be automatically generated. This set-up makes it possible to quickly analyse, edit and update the base maps and their encoding. Direct cross-checks are possible between the processed dating evidence (landform age assignment) and the independent interpretation from traditional geological, geomorphological and soil mapping products. This process is looped over several times to iterate the mapped and dated elements into a self-consistent map, e.g. to use all mapped and dated channel-belt fragments to generate a continuous river network for all time steps.

These datasets document and summarise large amounts of information on the position and age of Holocene rivers and tidal channels and have been used in applied and fundamental scientific research. Examples of scientific application are analysis of channel belt network dynamics (e.g. avulsion (Stouthamer & Berendsen, 2007; Kleinhans et al., 2010); tidal-ingression dynamics (Pierik et al., 2017c); post-glacial transgression and relative sea-level reconstruction (Hijma & Cohen, 2011, 2019; Vis et al., 2015); sediment budgeting (Erkens & Cohen, 2009; Hobo, 2015); and flooding dynamics (Toonen, 2013)).

Both conventionally produced and GIS-generated palaeogeographical maps rely on correct intake of existing soil, and both geomorphological and geological maps require additional decisions regarding the absolute and relative age of the mapped units. In GIS-derived palaeogeographical maps, these decisions are partly documented as rules stored in the scripts, as element labels in the base maps or in linked database catalogues that describe ages, source datasets and element-specific decisions. Because begin and end ages of feature activity are stored, map series of landscape elements that were actively formed can be generated for any time slice of choice (decision 3; see introduction to this section). This makes it possible to visualise which features were actively forming at a given moment and which older features by that time were fossilised or affected by younger erosional channels (automising decision 2 – Cohen et al., 2014b; Pierik et al., 2016). This not only makes reconstruction more generic, it also avoids the effort of manual redrawing of the same feature for multiple time steps in the map series. The general and site-specific rules behind the workflow are well-documented; these rules comprise how the present state of the substrate combined with process knowledge leads to decisions in map making (Berendsen et al., 2007; Pierik et al., 2016; Cohen et al., 2017). By creating such map series, direct cross-checks are made between the processed dating evidence (landform age assignment) and the independent lithostratigraphical and morphogenetic interpretation from traditional geological and geomorphological mapping (decision 1; see introduction to this section). Lastly, because features are digitally copied rather than manually retraced, the spatial accuracy of the generated palaeogeographical map series is the same as that of the geological–geomorphological mappings in the source base maps, as are mapping-quality differences within the source map. Aesthetically this may be displeasing compared to conventionally produced more cartographically uniform maps, but for scientific use this is an advantage since well-mapped subareas keep their original resolution and their quality is not demoted because other areas have less data or lower-resolution input datasets.

Both the digital palaeogeographical mapping tradition and lithostratigraphy querying in 3D geomodelling use scripts to query

base maps and databases. They also incorporate outlines of geological features from legacy conventional geological maps. They furthermore exchange outlines and generation of features: facies interpretation and spatial correlation from lithostratigraphical mapping is used as the starting point for base maps in palaeogeographical applications (Berendsen et al., 2001; Pierik et al., 2016). In turn, the base map products of the digital palaeogeographical tradition are used as input into the national-scale 3D geomodelling (e.g. 'channel belt generations' in Echteld and Naaldwijk Formations; see 'Digital geological mapping' above). An example of digital geological map products that benefited from iterative geomodelling and palaeogeographical mapping is provided by the archaeological landscape maps of Cohen et al. (2017; Fig. 4F), in which 3D geomodelling output and palaeogeographical datasets were used in combination on a national scale. A major thematic difference between the two traditions is the importance of lithological variation in geomodelling (stochastic output for voxel cells, quantified compositional heterogeneity; e.g. Maljers et al., 2015) versus the importance given to ages and stages of development in digital palaeogeographical reconstruction (initial and matured size, duration of abandonment stage, continued visibility as a residual landform, complete burial; e.g. Cohen et al., 2014b; Pierik et al., 2016).

## Discussion

Over the 20th century, mapping traditions have evolved in different themes and between different institutes. Regardless of their originally intended use, nearly all datasets described here have seen usage for multiple purposes, both in academic and applied contexts. Some of these traditions and applications rank lithology and lithogenesis as the principal properties to map and model, while others consider age information to be equally important. Still, the soil, geomorphological, geological and palaeogeographical mapping traditions each resulted in map products conveying generic landscape information that are complementary to each other. Newer traditions seldom performed completely new data collection campaigns and often adapted and updated previously revealed patterns in the shallow surface instead from earlier mapping products. For example, data from soil mapping has been considered in shallow geological feature mappings, and information from palaeogeographical mapping has been used to import channel belt architectural elements in 3D models.

The historic development of the research traditions was driven by data availability and methodological innovations, but also by shifted user demand. Here we first summarise the main demand and data-driven developments behind the traditions and then suggest future steps to keep on getting the best out of all accumulated data.

### *Societal-demand driven developments*

Shifting needs from society have stimulated institutes to update map production workflows, to incorporate insights generated in parallel traditions and to move towards open data-publishing policies.

After World War II, the soil, geomorphological and geological mapping traditions were revolutionised as food production gained attention and economic activities (agriculture, mining) strongly increased. Soil survey studies were used to assess the fertility of the soil, suitability for crops, and groundwater conditions. At that time, agriculture was a relatively larger

part of the Dutch economy. Also, the agricultural landscape was restructured to make yields more efficient to feed the rising population and eliminate the risk of crop failure and famine. The wealth of additional information on shallow geology and landscape evolution from these soil mapping campaigns was subsequently partially used in 1:50,000 geomorphological and geological map sheets, made for planning, construction works and mining. The responsible institutes and universities covering these themes saw a large increase in capacity facilitating thorough and systematic field campaigns that laid the foundation for all modern map products (Faasse, 2002; Hartemink & Sonneveld, 2013).

The 1960s to 1980s brought new societal developments and shifting demands that stimulated continued development of the mapping traditions. As nature conservation and cultural landscapes became more important in land management, soil and geomorphological maps were used to trace inherited landscape elements and assess their development history. Environmental soil quality (fertiliser, industrial pollution) also received increasing attention and drove shifts in soil mapping (see 'Soil mapping' above). Groundwater pollution became an important topic that required geological information on aquifer composition. This launched geohydrology as a geological mapping application field, triggering the development of early computational applications, precursors of the current digital geomodelling (Bierkens & Weerts 1994). Urbanisation of the coastal plain transitioned large parts of agricultural land into overbuilt areas with new road and utility infrastructures. For their construction, geological data on the shallow subsurface was needed. In addition, demand for coastal zone and estuarine marine geological and geomorphological information increased as part of the Delta Works coastal defence national programme (1953–1986). These expanding socio-economic activities have further fed the demand for mapping data quality, actuality, clarity, consistency and accessibility (Van der Meulen et al., 2013).

Increasing building activities led to awareness of archaeological heritage management ('Digital geological mapping' above; Valletta Treaty in 1992). Landscape archaeology required accurate information on past natural landscapes from geomorphological, geological and palaeogeographical mapping traditions and in turn became a key field to produce age-based geological data. This information is used to assess the age and the surrounding past environment of archaeological sites. In applied archaeological research, this is essential to forecast the potential for encountering archaeological finds when natural ground is disturbed by construction activities (Deeben et al., 2008; Rensink et al., 2016; Cohen et al., 2017; Lauwerier et al., 2017). In academic archaeological research, it allows the study of possible natural drivers (e.g. wetting or floods) behind settlement dynamics (e.g. Spek, 2004; Vos, 2015a; Pierik & Van Lanen, 2019), or changes in socio-economic dynamics (trade routes, spatial use of resources: Van Lanen et al., 2015; Groenhuijzen & Verhagen, 2016; Jansma et al., 2017). Societal demands on cultural heritage management conveyed through the archaeological sector have stimulated the continued production of palaeogeographical map series in the 2000s to 2010s, both of the conventional and GIS-generated type (see previous section).

Arguably the latest demand comes from awareness of global climate change and its impact on urbanised coastal plains and deltas. Land subsidence adds to flood and salt water intrusion risks, and peat oxidation causes additional greenhouse gas emission. This has increased the attention for coastal-plain soft soil geomodelling

(Holocene peat and clay; oxidising drained top soil, consolidating subsoils; Erkens et al., 2016; Koster et al., 2018a,b). This requires integration of soil and shallow geological data, as well as datasets on surface lowering, geotechnical properties, biological activity and hydrology. In addition, improved mapping of Holocene successions formed under fast sea-level rise became more relevant to learn how natural sedimentation might help to combat future sea-level rise (e.g. Van der Spek & Beets, 1992; De Haas et al., 2018).

### Data and technology driven developments

In parallel to the societal-demand driven developments described above, total amounts of data grew and new techniques were invented. The invention of radiocarbon dating (Libby, 1946) is a distinct example of a technological innovation that revolutionised mapping in earth sciences and in archaeology. Dating was implemented since the 1950s, providing numeric age control to the tidal and fluvial systems. This changed geological mapping procedures in the 1960–80s ('Conventional geological mapping' above – Fig. 7) and enabled palaeogeographical mapping traditions to commence (see previous section). Today, dating numbers are ever increasing, resolution and sampling protocols have improved (e.g. Törnqvist et al., 1992; Törnqvist & Van Dijk, 1993 – 'Digital geological mapping' above) and new dating techniques have been added (e.g. OSL; Wallinga et al., 2007). The use of the age information is not limited to palaeogeographical reconstructions of past geomorphological processes and geoarchaeological site environments. It facilitates age-based geological mapping and more detailed reconstructions as input data for 3D geomodelling of the coastal and delta plain. Other important applications that require age data are peat compression history (Van Asselen et al., 2009; Koster et al., 2018a,b) and past greenhouse gas emissions by peat oxidation (Erkens et al., 2016).

The rise of digital information technologies (IT) since the 1980s was a second major innovation-driven development. Digital data storage allowed databases to be maintained and GIS systems to be operated ('GIS-generated palaeogeographical mapping' above), while network IT allowed sharing of data and products via the Internet from the 1990s. These developments greatly affected production workflow in each mapping tradition. They made data intake and conversion from other traditions relatively easy and allowed automatized steps in map production ('Digital geological mapping' and 'GIS-generated palaeogeographical mapping' above). The IT revolution also helped map producers to use high-resolution data generated by novel remote sensing techniques, such as LiDAR ('Geomorphological mapping' above). Part of legacy data (maps on paper and underlying datasets) has been digitised from early on, other parts have been archived and still await digitisation, whereas some parts have been lost ('Soil mapping' above). Nowadays, most legacy mapping output has been digitised and shared in the public domain (Key Register for the Subsurface, *Basisregistratie Ondergrond*; Bartels & Van der Ven, 2019). Although direct use of the digitised legacy maps might decrease in the future, their digital availability as well as their underlying datasets will remain important to trace back past feature-outlining decisions when revising actual mapping (see previous two sections).

The innovations on dating and digital data management, combined with accumulating amounts of source data, facilitated technical quality improvements of the mapping products of all traditions. This is well illustrated by the products of the

palaeogeographical mapping traditions, as these have incorporated and digitised the most diverse selection of source data (mapping products and underlying data; 'Conventional palaeogeographical mapping' and 'GIS-generated palaeogeographical mapping' above). Examples are studies on delta avulsion history (Stouthamer & Berendsen, 2007), post-glacial transgression (Hijma & Cohen, 2011) and ingressive tidal systems (Vos, 2015a; Pierik et al., 2017c; De Haas et al., 2018). The geoarchaeological studies combining investigation of geomorphological processes with knowledge on human land use (previous section and previous subsection) are additional examples. The innovation of the 'base map' approach at the turn of the millennium ('GIS-generated palaeogeographical mapping' above) exemplifies the adoption of IT techniques as well as anticipation on the increased amounts of data availability and growing user diversity. The smart integration of data following the right combination of priority rules (e.g. which dataset provides the best information on age or extent?) is key to disclose the otherwise fragmented knowledge. Such a sound comparison of different datasets will still require assessment of the original focus, scale, research strategy and state of knowledge underlying each dataset.

### Towards shared basic data infrastructure?

Between traditions and institutes, there is already ad hoc cross-usage and effort to synchronise products, and interest in underlying concepts and methodologies. Synchronisation is not always straightforward, because the mapping traditions each adopt their own digital techniques and respond differently to shifts in societal demands. Broad interactive use of the nowadays digital products of all traditions will likely continue, and as data quantities grow, societal demands to keep products actual and mutually consistent remain. It is therefore desirable that synchronisation and cross-checking activities remain and are even intensified.

Synchronisation between traditions is desirable because all active mapping traditions use the same overlapping underlying source dataset (e.g. LiDAR surface data, shallow subsurface borehole data, accumulated dating evidence, and feature outlines from legacy mapping that are partially updated). Furthermore, although feature definitions and mapping-system legends are historically fundamentally different, the thematically different traditions reveal the same spatial patterns, because soil, geomorphology and shallow substrate composition are interconnected. Hence feature outlines (i.e. polygon boundaries) on each tradition's map should reveal comparable spatial patterns, if not exact overlap. In the case of soil maps, for example, unit boundaries theoretically show overlap with geomorphologically and geologically mapped units as soil formation heavily depends on relief and substrate ('Soil mapping' above). The same is true for palaeogeographical maps and geological maps. While comparing existing digital mapping products, one indeed observes substantial alignment (Figs 3–6). This is, however, not always the case for all products or all areas, because synchronisation generally occurred ad hoc and depended on institutionally dependent decisions.

The GIS technology spawned scripting-protocolised (and automated) further steps in digital map production. Still, manual parts in the workflow remain important in maintaining base maps in the GIS-generated palaeogeographical mapping tradition ('GIS-generated palaeogeographical mapping' above) and for data intake and interpretation in the geomodelling workflow ('Digital geological mapping' above). This is necessary to implement decisions based on geomorphological and geological knowledge, assess

input data based upon the background of its tradition and iteratively perform quality checks ('Digital geological mapping' above, and previous section). Base maps were developed as the manually maintained dataset counterpart to workflows involving feature queries (palaeogeographical and geological mapping traditions) and geospatial interpolation of underlying datasets between prescribed boundaries (geomodelling). This makes expert decisions transparent and datasets updatable with new insights. While making optimal use of automated rules and algorithms, this leaves reconstructions and map compilation in the hands and control of earth scientists.

A common platform with shared base maps would facilitate regular synchronisation and data intake for future actualisations of thematic vector maps and gridded maps for the Netherlands (e.g. geoarchaeological, soil and substrate modelling products). Maintained by the participating institutes from all traditions, such a platform could be used to review and synchronise maps, as well as scripting techniques deployed to produce them. Compared to just comparing end-product maps, this would lead to deeper insights and increase the technical transparency of decisions made during the workflow. It would furthermore improve the reproducibility of thematic output maps for academic and applied research.

Integration of information from soil, geological and geomorphological mapping into base-map GIS technologies is currently most advanced for the Holocene coastal and delta plain (see previous section). For the Pleistocene uplands, producing palaeogeographical maps for the Holocene has so far followed conventional methods (Vos et al., 2011; Van Beek et al., 2015; Rensink et al., 2016). Notably reconstruction of its peat dynamics, drift sands and vegetation changes may benefit from adopting GIS-generated mapping methods by incorporating LiDAR-based geomorphology and modern soil mapping data. Also mapping and reconstructing older landscapes may benefit from GIS-integrated efforts and age-based query techniques. Examples are drowned Weichselian landscapes in the Southern North Sea floor (e.g. Hijma et al., 2012), Saalian glaciation, and deglaciation or Eemian transgression (e.g. Busschers et al., 2008; Peeters et al., 2016). Quaternary geological and Palaeolithic archaeological science, and geohydrological applied use benefit from this (Cohen et al., 2014a). Extending palaeogeographical reconstructions into the Lateglacial and Pleniglacial is certainly possible with the current techniques (Cohen et al., 2012; Woolderink et al., 2018). Expansion to older periods would, however, demand more effort and reconsideration of temporal and spatial resolutions.

## Conclusion

This paper reviews the historical development of soil, geomorphological and geological mapping traditions and describes the use of their legacy datasets for mapping past landscapes in the digital era. In the Netherlands, the physical landscape and its substrate have been mapped by a variety of research disciplines that have produced map datasets of various spatial coverage, resolution and thematic focus. Although often initiated for specific purposes, all mapping traditions discussed in this paper generated knowledge and map products for a wide range of applications. In academic use, for example, they are instrumental in identifying and timing geomorphological processes, as well as past human–landscape interactions. Examples of applied use are agricultural optimisation, landscape and cultural heritage conservation, urban expansion and environmental sustainability.

Map products and underlying observational data have always been exchanged between the mapping traditions. Newer traditions seldom performed completely new data collection campaigns but often adapted and updated previously revealed shallow surface patterns instead. Hence, these legacy maps summarise overwhelming amounts of underlying data that have accumulated over the last centuries, and they are therefore valuable for reconstructing past landscapes. To keep palaeogeographical insights up to date and synchronised with the parallel knowledge growth in the other traditions, it is important to continue combining existing information and new datasets into well-documented integrated overview maps. For this, background knowledge on these legacy datasets is essential.

After World War II, an increase in economic activities demanded upgraded geological, geomorphological and soil mapping programmes on local to national scales. Since then, additional societal demands for shallow subsurface information have emerged, while modern mapping products are still based on vast amounts of legacy data. Incorporation of radiocarbon-based ages considerably improved accuracy on age and genetic interpretation of landscape features, particularly in the coastal and delta plain. This affected the legends of geological and geomorphological maps and paved the way for palaeogeographical mapping. From the 1980s onwards, digital techniques strongly aided map revision and compilation, by facilitating automatised workflows for importing and combining data. Over the last two decades this has culminated in a variety of GIS-generated products, i.e. geological–geomorphological, palaeogeographical and 3D geomodelling products. Their underlying workflows involve the use of base maps (digital data layers – e.g. storing feature outline, age and type), which allow the separation of manual data preparation from automatised production steps. In this way, legacy data intake and decisions in map compilation are more generic and transparent. In the future, collaboration between different institutes and their thematic datasets will remain necessary, for example through organised sharing and maintenance of base maps. This will enable efficient harvesting of information on geology and landscape evolution from our country's research legacy.

**Acknowledgements.** This paper is based on chapter 2 of H.J. Pierik's PhD thesis (Pierik, 2017), carried out within the project 'The Dark Ages in an interdisciplinary light' funded by NWO (project nr. 360-60-110). It further draws on insights from the project 'Landschapskaarten en hoogtemodellen naar periode en diepte voor archeologisch gebruik in Holocene-afgedekte delen van Nederland' (Cohen et al., 2017) (Deltares-project 1210450; TNO-project 060.12484; doi: 10.17026/dans-zck-y7ww). We thank the two anonymous reviewers for useful comments on the manuscript.

## References

- Allen, J.R.L., 1965, A review of the origin and characteristics of recent alluvial sediments. *Sedimentology* 5: 89–191.
- Baeteman, C., 1999, The Holocene depositional history of the IJzer palaeovalley (Western Belgian coastal plain) with reference to the factors controlling the formation of intercalated peat beds. *Geologica Belgica* 2: 39–72.
- Baeteman, C., 2005, The Streif classification system: a tribute to an alternative system for organising and mapping Holocene coastal deposits. *Quaternary International* 133–134: 141–149. doi: 10.1016/j.quaint.2004.10.004.
- Barckhausen, J., Preuss, H. & Streif, H., 1977, Ein lithologisches Ordnungsprinzip für das künstenholozän und seine Darstellung in Form von Profiltypen. Geologischen Landesämtern in der Bundesrepublik Deutschland (Hannover).
- Bartels, M.C. & van der Ven, J.C., 2019, De Nederlandse Ondergrond: een schat aan vrij beschikbare informatie. *GEA Geologie* 3.



- Bazelmans, J., Meier, D., Nieuwhof, A., Spek, T. & Vos, P.C.**, 2012, Understanding the cultural historical value of the Wadden Sea region. The co-evolution of environment and society in the Wadden Sea area in the Holocene up until early modern times (11,700 BC–1800 AD): an outline. *Ocean & Coastal Management* **68**: 114–126.
- Beets, D.J. & Van der Spek, A.J.F.**, 2000, The Holocene evolution of the barrier and the back-barrier basins of Belgium and the Netherlands as a function of late Weichselian morphology, relative sea-level rise and sediment supply. *Geologie en Mijnbouw/Netherlands Journal of Geosciences* **79**: 3–16.
- Beets, D.J., Van der Valk, L. & Stive, M.J.F.**, 1992, Holocene evolution of the coast of Holland. *Marine Geology* **103**: 423–443.
- Behre, K.-E.**, 2004, Coastal development, sea-level change and settlement history during the later Holocene in the Clay District of Lower Saxony (Niedersachsen), northern Germany. *Quaternary International* **112**: 37–53. doi: [10.1016/S1040-6182\(03\)00064-8](https://doi.org/10.1016/S1040-6182(03)00064-8).
- Bennema, J., Van der Meer, K., Dorsman, C. & Van der Feen, J.P.**, 1952, De bodemkartering van Walcheren. Staatsdrukkerij Uitgeverijbedrijf ('s Gravenhage).
- Berendsen, H.J.A.**, 1982, De genese van het landschap in het zuiden van de provincie Utrecht. Utrecht University (Utrecht): 259 pp.
- Berendsen, H.J.A.**, 1984a, Problems of lithostratigraphic classification of Holocene deposits in the perimarine area of the Netherlands. *Geologie en Mijnbouw* **63**: 351–354.
- Berendsen, H.J.A.**, 1984b, Quantative analysis of radiocarbon-dates of the perimarine area in the Netherlands. *Geologie en Mijnbouw* **63**: 343–350.
- Berendsen, H.J.A.**, 1986, Het landschap van de Bommelerwaard. *Nederlandse Geografische Studies* **10**: 184 pp.
- Berendsen, H.J.A.**, 2007, History of geological mapping of the Holocene Rhine-Meuse delta, the Netherlands. *Geologie en Mijnbouw/Netherlands Journal of Geosciences* **86**: 165–177.
- Berendsen, H.J.A. & Stouthamer, E.**, 2000, Late Weichselian and Holocene palaeogeography of the Rhine–Meuse delta, the Netherlands. *Palaeogeography, Palaeoclimatology, Palaeoecology* **161**: 311–335. doi: [10.1016/S0031-0182\(00\)00073-0](https://doi.org/10.1016/S0031-0182(00)00073-0).
- Berendsen, H.J.A. & Stouthamer, E.**, 2001, Palaeogeographic development of the Rhine-Meuse delta, the Netherlands, the Holocene. Koninklijke van Gorcum (Assen).
- Berendsen, H.J.A. & Volleberg, K.P.**, 2007, New prospects in geomorphological and geological mapping of the Rhine-Meuse Delta: application of detailed digital elevation maps based on laser altimetry. *Netherlands Journal of Geosciences/Geologie en Mijnbouw* **86**: 15–22.
- Berendsen, H.J.A., Cohen, K.M. & Stouthamer, E.**, 2001, The geological-geomorphological map and palaeogeographic maps of the Rhine-Meuse delta. In: Berendsen, H.J.A. and Stouthamer, E. (eds): *Palaeogeographic development of the Rhine-Meuse delta, the Netherlands*. Koninklijke van Gorcum (Assen): 49–50.
- Berendsen, H.J.A., Cohen, K.M. & Stouthamer, E.**, 2007, The use of GIS in reconstructing the Holocene palaeogeography of the Rhine–Meuse delta, the Netherlands. *International Journal of Geographical Information Science* **21**: 589–602. doi: [10.1080/13658810601064918](https://doi.org/10.1080/13658810601064918).
- Bierkens, M.F.P. & Weerts, H.J.T.**, 1994, Application of indicator simulation to modelling the lithological properties of a complex confining layer. *Geoderma* **62**: 265–284. doi: [10.1016/0016-7061\(94\)90040-X](https://doi.org/10.1016/0016-7061(94)90040-X).
- Bos, I.J., Busschers, F.S. & Hoek, W.Z.**, 2012, Organic-facies determination: a key for understanding facies distribution in the basal peat layer of the Holocene Rhine-Meuse delta, the Netherlands. *Sedimentology* **59**: 676–703. doi: [10.1111/j.1365-3091.2011.01271.x](https://doi.org/10.1111/j.1365-3091.2011.01271.x).
- Busschers, F.S., Van Balen, R.T., Cohen, K.M., Kasse, C., Weerts, H.J.T., Wallinga, J. & Bunnik, F.P.M.**, 2008, Response of the Rhine-Meuse fluvial system to Saalian ice-sheet dynamics. *Boreas* **37**: 377–398. doi: [10.1111/j.1502-3885.2008.00025.x](https://doi.org/10.1111/j.1502-3885.2008.00025.x).
- Busschers, F.S., Stafleu, J. & Maljers, D.**, 2013, Grain-size trends in the Holocene Rhine-Meuse delta: insights from 3D stochastic modelling. In: Daniel Parsons, D., Ashworth, P., Best, J., & Simpson, C. (eds): *Book of abstracts 10th International Conference on Fluvial Sedimentology*, Leeds, UK.
- Cleveringa, J.**, 2000, Reconstruction and modelling of Holocene coastal evolution of the western Netherlands. Universiteit Utrecht (Utrecht): 198 pp.
- Clingeberg, A.E.**, 1986, De Bodemkaart van Nederland schaal 1:50.000: toelichting bij de kaartbladen 7 (Oost Groningen) en 8 (Nieuweschans). STIBOKA (Wageningen).
- Crossen, J.**, 1958, Enige opmerkingen omtrent het ontstaan van het beneden-boornegebied. *Boor & Spade* **9**: 24–38. <http://edepot.wur.nl/109972>.
- Cohen, K.M., Stouthamer, E., Hoek, W.Z., Berendsen, H.J.A. & Kempen, H.F.J.**, 2009, Zand in banen – zanddiepte kaarten van het Rivierengebied en het IJsseldal in de provincies Gelderland en Overijssel. Universiteit Utrecht (Utrecht): 147 pp.
- Cohen, K.M., Stouthamer, E., Pierik, H.J. & Geurts, A.H.**, 2012, Digitaal Basisbestand Paleogeografie van de Rijn-Maas Delta/Rhine-Meuse Delta Studies' Digital Basemap for Delta Evolution and Palaeogeography. Available at <https://easy.dans.knaw.nl/ui/datasets/id/easy-dataset:52125>.
- Cohen, K.M., Gibbard, P.L. & Weerts, H.J.T.**, 2014a, North Sea palaeogeographical reconstructions for the last 1 Ma. *Netherlands Journal of Geosciences/Geologie en Mijnbouw* **93**: 7–29. doi: [10.1017/njg.2014.12](https://doi.org/10.1017/njg.2014.12).
- Cohen, K.M., Arnoldussen, S., Erkens, G., Popta, Y.T. & Taal, L.J.**, 2014b, Archeologische verwachtingskaart uiterwaarden rivierengebied. Deltares rapport 1207078. Deltares (Delft).
- Cohen, K.M., Dambrink, R., De Bruijn, R., Marges, V.C., Erkens, G., Pierik, H.J., Koster, K., Stafleu, J., Schokker, J. & Hijma, M.P.**, 2017, Mapping buried Holocene landscapes: past lowland environments, palaeoDEMs and preservation in GIS. *Nederlandse Archeologische Rapportage* **55**: 73–93.
- De Bakker, H.**, 1970, Purposes of soil classification. *Bodem* **4**: 195–208.
- De Bakker, H. & Schelling, J.**, 1966, Systeem van bodemclassificatie voor Nederland: de hogere niveaus. Pudoc (Wageningen).
- De Boer, G., Molenaar, S. & Soonius, C.**, 2014, Archeologisch vooronderzoek en het belang van oude bodemkaarten. *Archeobrief* **17**(3): 22–28.
- De Haas, T., Pierik, H., van der Spek, A., Cohen, K.M., van Maanen, B. & Kleinhans, M.G.**, 2018, Holocene evolution of tidal systems in the Netherlands: effects of rivers, coastal boundary conditions, eco-engineering species, inherited relief and human interference. *Earth-Science Reviews* **177**: 139–163. doi: [10.1016/j.earscirev.2017.10.006](https://doi.org/10.1016/j.earscirev.2017.10.006).
- De Mulder, E.F.J., Geluk, M.C., Ritsema, I., Westerhoff, W.E. & Wong, T.E.**, 2003, De Ondergrond van Nederland. *Geologie van Nederland*, deel 7. Nederlands Instituut voor Toegepaste Geowetenschappen TNO (Utrecht): 379 pp.
- De Roo, H.**, 1953, Enkele bodemkundige aantekeningen over de Drentse essen. *Boor & Spade* **6**: 59–76.
- De Smet, L.A.H.**, 1962, Het Dollardgebied, bodemkundige en landbouwkundige onderzoekingen in het kader van de bodemkartering. *De Bodemkartering van Nederland*, Verslagen Landbouwkundig Onderzoek ('s Gravenhage).
- De Vries, F., de Groot, W.J.M., Hoogerland, T. & Denneboom, J.**, 2003, De bodemkaart van Nederland digitaal: toelichting bij inhoud, actualiteit en methodiek en korte beschrijving van additionele informatie. Alterra Report 811. Alterra (Wageningen).
- Deeben, J.H.C., Derickx, W.J.B., Groenewoudt, B.J., Peeters, J.H.M. & Rensink, E.**, 2008, De Indicatieve Kaart van Archeologische Waarden, derde generatie. Rapportage Archeologische Monumentenzorg (RAM) 155. Rijksdienst voor Archeologie, Cultuurlandschap en Monumenten (Amsterdam).
- Delsman, J.R., Hu-A-Ng, K.R.M., Vos, P.C., De Louw, P.G.B., Oude Essink, G.H.P., Stuyfzand, P.J. & Bierkens, M.F.P.**, 2014, Paleomodelling of coastal saltwater intrusion during the Holocene: an application to the Netherlands. *Hydrology and Earth System Sciences* **18**: 3891–3905. doi: [10.5194/hess-18-3891-2014](https://doi.org/10.5194/hess-18-3891-2014).
- Doppert, J.W., Ruegg, G.H.J., van Staaldunin, C.J., Zagwijn, W.H. & Zandstra, J.G.**, 1975, Formaties van het Kwartair en Boven-Tertiair in Nederland. In: Zagwijn, W.H. and van Staaldunin, C.J. (eds): *Toelichting bij geologische overzichtskaarten van Nederland*. Rijks Geologische Dienst (Haarlem): 11–56.
- Dubois, G.**, 1924, Recherches sur les terrains quaternaires du Nord de la France. *Mémoire de la Société Géologique du Nord* **8**(2) (Lille): 355 pp.
- Ebbens, G. & Van het Loo, H.**, 1992, De Bodemkaart van Nederland schaal 1:50.000: toelichting bij de kaartbladen 28 Oost en 29 (Almelo-Denekamp). STIBOKA (Wageningen).

- Ebbing, J.H.J., Weerts, H.J.T. & Westerhoff, W.E.**, 2003, Towards an integrated land–sea stratigraphy of the Netherlands. *Quaternary Science Reviews* **22**: 1579–1587. doi: [10.1016/S0277-3791\(03\)00161-6](https://doi.org/10.1016/S0277-3791(03)00161-6).
- Edelman, C.H., Eringa, L., Hoeksema, K.J., Jantzen, J.J. & Modderman, P.J.R.**, 1950, Een bodemkartering van de Bommelerwaard boven den Meidijk: STIBOKA (Wageningen).
- Erkens, G. & Cohen, K.M.**, 2009, Quantification of intra-Holocene sedimentation in the Rhine-Meuse delta: a record of variable sediment delivery. In: Erkens, G. (ed.): *Sediment dynamics in the Rhine catchment*. PhD Thesis. University of Utrecht (Utrecht): 117–172.
- Erkens, G., van der Meulen, M.J. & Middelkoop, H.**, 2016, Double trouble: subsidence and CO<sub>2</sub> respiration due to 1,000 years of Dutch coastal peatlands cultivation. *Hydrogeology Journal* **24**: 551–568. doi: [10.1007/s10040-016-1380-4](https://doi.org/10.1007/s10040-016-1380-4).
- Faasse, P.**, 2002, De ontdekking van de ondergrond: anderhalve eeuw toegepast geowetenschappelijk onderzoek in Nederland. TNO (Utrecht): 79 pp.
- Fisk, H.N.**, 1947, Fine-grained alluvial deposits and their effects on Mississippi River activity. *Waterways Experiment Station* (Vicksburg, MS).
- Gouw, M.J.P. & Erkens, G.**, 2007, Architecture of the Holocene Rhine-Meuse delta (the Netherlands): a result of changing external controls. *Netherlands Journal of Geosciences/Geologie en Mijnbouw* **86**: 23–54.
- Griede, J.W.**, 1978, Het ontstaan van Friesland's Noordhoek: een fysisch-geografisch onderzoek naar de Holocene ontwikkeling van een zeekeleigebied. Vrije Universiteit Amsterdam (Amsterdam): 186 pp.
- Groenhuijzen, M.R. & Verhagen, J.W.H.P.**, 2016, Testing the robustness of local network metrics in research on archeological local transport networks. *Frontiers in Digital Humanities* **3**. doi: [10.3389/fdigh.2016.00006](https://doi.org/10.3389/fdigh.2016.00006).
- Gunnink, J.L., Maljers, D., Van Gessel, S.F., Menkovic, A. & Hummelman, H.J.**, 2013, Digital Geological Model (DGM): a 3D raster model of the subsurface of the Netherlands. *Netherlands Journal of Geosciences/Geologie en Mijnbouw* **92**: 33–46.
- Hageman, B.P.**, 1963, De profieltype-legenda van de nieuwe geologische kaart voor het zeelei- en rivierkleigebied. *Tijdschrift voor het Koninklijk Nederlands Aardrijkskundig Genootschap, Tweede Reeks* **80**: 217–229.
- Hageman, B.P.**, 1969, Development of the western part of the Netherlands during the Holocene. *Geologie en Mijnbouw* **48**: 373–388.
- Hartemink, A.E. & Sonneveld, M.P.W.**, 2013, Soil maps of The Netherlands. *Geoderma* **204–205**: 1–9. doi: [10.1016/j.geoderma.2013.03.022](https://doi.org/10.1016/j.geoderma.2013.03.022).
- Harting, P.**, 1852, De bodem onder Amsterdam onderzocht en beschreven. Vol. 1. Sulpe (Amsterdam).
- Hijma, M.P. & Cohen, K.M.**, 2011, Holocene transgression of the Rhine river mouth area, the Netherlands/Southern North Sea: palaeogeography and sequence stratigraphy. *Sedimentology* **58**: 1453–1485. doi: [10.1111/j.1365-3091.2010.01222.x](https://doi.org/10.1111/j.1365-3091.2010.01222.x).
- Hijma, M.P. & Cohen, K.M.**, 2019, Holocene sea-level database for the Rhine-Meuse delta, the Netherlands: implications for the pre-8.2 ka sea-level jump. *Quaternary Science Reviews* **214**: 68–86.
- Hijma, M.P., Cohen, K.M., Roebroeks, W., Westerhoff, W.E. & Busschers, F.S.**, 2012, Pleistocene Rhine–Thames landscapes: geological background for hominin occupation of the southern North Sea region. *Journal of Quaternary Science* **27**: 17–39. doi: [10.1002/jqs.1549](https://doi.org/10.1002/jqs.1549).
- Hobo, N.**, 2015, The sedimentary dynamics in natural and human-influenced delta channel belts. Utrecht University (Utrecht): 196 pp. <https://dspace.library.uu.nl/handle/1874/323295>.
- Jansma, E., Van Lanen, R. & Pierik, H.J.**, 2017, Travelling through a river delta: a landscape-archaeological reconstruction of river development and long-distance connections in the Netherlands during the first millennium AD. *Medieval Settlement Research* **32**: 35–39.
- Kempen, B., Brus, D.J., Heuvelink, G.B. & Stoorvogel, J.J.**, 2009, Updating the 1: 50,000 Dutch soil map using legacy soil data: a multinomial logistic regression approach. *Geoderma* **151**: 311–326.
- Kempen, B., Heuvelink, G.B.M., Brus, D.J. & Stoorvogel, J.J.**, 2010, Pedometric mapping of soil organic matter using a soil map with quantified uncertainty. *European Journal of Soil Science* **61**: 333–347. doi: [10.1111/j.1365-2389.2010.01232.x](https://doi.org/10.1111/j.1365-2389.2010.01232.x).
- Kleinhans, M.G., Weerts, H.J.T. & Cohen, K.M.**, 2010, Avulsion in action: reconstruction and modelling sedimentation pace and upstream flood water levels following a Medieval tidal-river diversion catastrophe (Biesbosch, The Netherlands, 1421–1750 AD). *Geomorphology* **118**: 65–79. doi: [10.1016/j.geomorph.2009.12.009](https://doi.org/10.1016/j.geomorph.2009.12.009).
- Knoel, E.**, 1993, De Noordnederlandse kustlanden in de vroege middeleeuwen. Vrije Universiteit Amsterdam (Amsterdam): 270 pp.
- Koomen, A.J.M. & Maas, G.J.**, 2004, Geomorfologische Kaart Nederland (GKN); Achtergronddocument bij het landsdekkende digitale bestand. Available at <http://edepot.wur.nl/40241>.
- Koster, K., Cohen, K.M., Stafleu, J. & Stouthamer, E.**, 2018a, Using <sup>14</sup>C-dated peat beds for reconstructing subsidence by compression in the Holland Coastal Plain of the Netherlands. *Journal of Coastal Research* **34**: 1035–1045. doi: [10.2112/JCOASTRES-D-17-00093.1](https://doi.org/10.2112/JCOASTRES-D-17-00093.1).
- Koster, K., Stafleu, J., Cohen, K.M., Stouthamer, E., Busschers, F.S. & Middelkoop, H.**, 2018b, Three-dimensional distribution of organic matter in coastal-deltaic peat: implications for subsidence and carbon dioxide emissions by human-induced peat oxidation. *Anthropocene* **22**: 1–9. doi: [10.1016/j.ancene.2018.03.001](https://doi.org/10.1016/j.ancene.2018.03.001).
- Kuijper, P.C.**, 1987, De Bodemkaart van Nederland schaal 1:50.000: toelichting bij kaartblad 3 (Uithuizen). STIBOKA (Wageningen).
- Lauwerier, R.C.G.M., Eerden, M.C., Groenewoudt, B.J., Lascaris, M.A., Rensink, E., Smit, B.I., Speleers, B.P. & van Doesburg, J.**, 2017, Knowledge for Informed Choices: tools for more effective and efficient selection of valuable archaeology in the Netherlands. *Nederlandse Archeologische Rapportage* **55** (Amersfoort).
- Leenders, K.A.H.W.**, 1996, Van Turnhoutervoorde tot Strienmonde. Ontginning-en nederzettingsgeschiedenis van het noordwesten van het Maas-Schelde-Demergebied (400–1350): een poging tot een synthese. University of Amsterdam (Amsterdam): 662 pp. Available at <https://dare.uva.nl/search?arno.record.id=19891>.
- Lenselink, G. & Koopstra, R.**, 1994, Ontwikkelingen in het Zuiderzeegebied; van Meer Flevo, via de Almere-lagune, tot Zuiderzee. In: Rappol, M. and Soonius, C.M. (eds): *In de Bodem van Noord- Holland*. *Lingua Terra* (Amsterdam): 129–138.
- Libby, W.F.**, 1946, Atmospheric helium three and radiocarbon from cosmic radiation. *Physical Review* **69**: 671.
- Louwe Kooijmans, L.P.**, 1974, The Rhine/Meuse delta: four studies on its prehistoric occupation and Holocene geology. Leiden University (Leiden): 421 pp.
- Maas, G.J., van Delft, S.P.J. & Heidema, A.H.**, 2017, Toelichting bij de legenda Geomorfologische kaart van Nederland 1: 50 000. Wageningen University and Research. <https://legendageomorfologie.wur.nl/>.
- Maljers, D., Stafleu, J., Van Der Meulen, M.J. & Dambrink, R.M.**, 2015, Advances in constructing regional geological voxel models, illustrated by their application in aggregate resource assessments. *Netherlands Journal of Geosciences/Geologie en Mijnbouw* **94**: 257–270. doi: [10.1017/njg.2014.46](https://doi.org/10.1017/njg.2014.46).
- Mathys, M.**, 2009, The Quaternary geological evolution of the Belgian Continental Shelf, southern North Sea. PhD Thesis. Ghent University (Ghent): 382 pp.
- Moree, J., Van Trierum, M. & Carmiggelt, A.**, 2018, Onderzoeksagenda Archeologie van de gemeente Rotterdam (ROA): prehistorie en Romeinse tijd. *Archeologie Rotterdam (BOOR)* (Rotterdam).
- Missiaen, T., Jongepier, I., Heirman, K., Soens, T., Gelorini, V., Verniers, J., Verhegge, J. & Crombé, P.**, 2016, Holocene landscape evolution of an estuarine wetland in relation to its human occupation and exploitation: Waasland Scheldt polders, northern Belgium. *Netherlands Journal of Geosciences/Geologie en Mijnbouw* **96**: 1–28. doi: [10.1017/njg.2016.24](https://doi.org/10.1017/njg.2016.24).
- Oele, E., Apon, W., Fischer, M.M., Hoogendoorn, R., Mesdag, C.S., De Mulder, E.F.J., Overzee, B., Sesören, A. & Westerhoff, W.E.**, 1983, Surveying the Netherlands: sampling techniques, maps and their application. *Geologie en Mijnbouw* **62**: 355–372.
- Peeters, J., Busschers, F.S., Stouthamer, E., Bosch, J.H.A., Van den Berg, M.W., Wallinga, J., Versendaal, A.J., Bunnik, F.P.M. & Middelkoop, H.**, 2016, Sedimentary architecture and chronostratigraphy of a late Quaternary incised-valley fill: a case study of the late Middle and Late Pleistocene Rhine

- system in the Netherlands. *Quaternary Science Reviews* **131**: 211–236. doi: [10.1016/j.quascirev.2015.10.015](https://doi.org/10.1016/j.quascirev.2015.10.015).
- Pierik, H.J.**, 2017, Past human-landscape interactions in the Netherlands: reconstructions from sand belt to coastal-delta plain for the first millennium AD. *Utrecht Studies in Earth Sciences* **139**. <https://dspace.library.uu.nl/handle/1874/354561>.
- Pierik, H.J. & Van Lanen, R.J.**, 2019, Roman and early-medieval habitation patterns in a delta landscape: the link between settlement elevation and landscape dynamics. *Quaternary International* **501** (B): 379–392. doi: [10.1016/j.quaint.2017.03.010](https://doi.org/10.1016/j.quaint.2017.03.010).
- Pierik, H.J., Cohen, K.M. & Stouthamer, E.**, 2016, A new GIS approach for reconstructing and mapping dynamic late Holocene coastal plain palaeogeography. *Geomorphology* **270**: 55–70. doi: [10.1016/j.geomorph.2016.05.037](https://doi.org/10.1016/j.geomorph.2016.05.037).
- Pierik, H.J., Stouthamer, E. & Cohen, K.M.**, 2017a, Natural levee evolution in the Rhine-Meuse delta, the Netherlands, during the first millennium CE. *Geomorphology* **295**: 215–234. doi: [10.1016/j.geomorph.2017.07.003](https://doi.org/10.1016/j.geomorph.2017.07.003).
- Pierik, H.J., Cohen, K.M. & Stouthamer, E.**, 2017b, Geomorphological reconstructions of the natural levee landscape in the first millennium AD of the Rhine-Meuse delta, the Netherlands, DANS archive dataset. Available at <https://doi.org/10.17026/dans-zg9-nqfx>.
- Pierik, H.J., Cohen, K.M., Vos, P.C., van der Spek, A.J.F. & Stouthamer, E.**, 2017c, Late Holocene coastal-plain evolution of the Netherlands: the role of natural preconditions in human-induced sea ingressions. *Proceedings of the Geologists' Association* **128**: 180–197. doi: [10.1016/j.pgeola.2016.12.002](https://doi.org/10.1016/j.pgeola.2016.12.002).
- Pijls, F.W.G.**, 1948, Een gedetailleerde bodemkartering van de gemeente Didam. Landbouwhogeschool (Wageningen): 116 pp. <http://edepot.wur.nl/175425>.
- Pleijter, G. & Van Wallenburg, C.**, 1994, Bodemkaart van Nederland 1:50.000: toelichting bij de kaartbladen 42 West en 42 Oost Zierikzee en 47/48 W. DLO-Staring Centrum (Wageningen).
- Pons, L.J.**, 1965, De Zeekleigronden. In: *De bodem van Nederland: toelichting bij de bodemkaart van Nederland schaal 1:200.000*. STIBOKA (Wageningen): 23–59.
- Pons, L.J.**, 1966, De bodemkartering van het Land van Maas en Waal en een gedeelte van het Rijk van Nijmegen. *Bodemkartering van Nederland deel 22*. Centrum voor Landbouw Publ. en Landbouwdoc. (Wageningen).
- Pons, L.J. & Van Oosten, M.F.**, 1974, De Bodem van Noordholland: toelichting bij blad 5 van de Bodemkaart van Nederland, schaal 1: 200.000: STIBOKA (Wageningen).
- Pons, L.J. & Wiggers, A.J.**, 1959–60, De Holocene wordingsgeschiedenis van Noordholland en het Zuiderzee gebied. *Tidschrift van het Aardrijkskundig Genootschap* **77**: 3–57. <http://edepot.wur.nl/258051>.
- Pons, L.J., Jelgersma, S., Wiggers, A.J. & De Jong, J.**, 1963, Evolution of the Netherlands coastal area during the Holocene. In: *De Jong, J. (ed.): Verhandelingen van het KNGMG "Transactions of the jubilee convention – part two"*. Koninklijk Nederlands Geologisch Mijnbouwkundig Genootschap ('s Gravenhage): 197–207.
- Rensink, E., De Kort, J.-W., Van Doesburg, J., Theunissen, L. & Bouwmeester, J.**, 2016, Digitaal informatiesysteem Prospectie op Maat: werkwijze en verantwoording. Available at <https://archeologiein nederland.nl/sites/default/files/attachments/RapportBestpracticesprospectiewebA.pdf>.
- Roeleveld, W.**, 1974, The Holocene evolution of the Groningen Marine-Clay District. *Berichten van de Rijksdienst voor het Oudheidkundig Bodemonderzoek* **24**: 1–133.
- Salvador, A.**, 1994, International stratigraphic guide: a guide to stratigraphic classification, terminology, and procedure. *International Union of Geological Sciences* (Trondheim/Boulder, CO).
- Schelling, J.**, 1955, Stui fzandgronden: inland-dune sand soils. Report Soil Survey Institute, Wageningen, 57 pp. Available at <http://library.wur.nl/WebQuery/edepot/391560>.
- Schelling, J.**, 1970, Soil genesis, soil classification and soil survey. *Geoderma* **4**: 165–193.
- Schokker, J., Bakker, M.A.J., Dubelaar, C.W., Dambrink, R.M. & Harting, R.**, 2015, 3D subsurface modelling reveals the shallow geology of Amsterdam. *Netherlands Journal of Geosciences* **94**: 399–417.
- Spek, T.**, 2004, The open field village landscape in Drenthe: a historical-geographical study. *Stichting Matrijs*: 1104 pp.
- Stafleu, J. & Busschers, F.S.**, 2012, The digital period (2000 till present): modelling the subsurface. In: *Floor, P. (ed.): Dutch Earth Sciences – development and impact*. KNGMG (The Hague): 177–178.
- Stafleu, J., Maljers, D., Gunnink, J.L., Menkovic, A. & Busschers, F.S.**, 2011, 3D modelling of the shallow subsurface of Zeeland, the Netherlands. *Netherlands Journal of Geosciences* **90**: 293–310.
- Stafleu, J., Maljers, D.M., Busschers, F.S., Gunnink, J.L., Schokker, J., Dambrink, R.M., Hummelman, H.J. & Schijf, M.L.**, 2012, GeoTop modeling. TNO-report R10991. TNO (Utrecht).
- Stafleu, J., van der Meulen, M.J., Gunnink, J.L., Maljers, D., Hummelman, J., Busschers, F.S., Schokker, J., Vernes, R.W., Doornenbal, H., den Dulk, M. & ten Veen, J.H.**, 2019, Systematic 3D subsurface mapping in the Netherlands. In: *MacCormack, K.E., Berg, R.C., Kessler, H., Russell, H.A.J. & Thorleifson, L.H. (eds): Synopsis of current three-dimensional geological mapping and modelling in geological survey organizations*. Alberta Energy Regulator/ Alberta Geological Survey, AER/AGS Special Report 112: 179–190.
- Staring, W.C.H.**, 1858, *Geologische kaart van Nederland 1 : 200.000 in 19 bladen*, uitgevoerd door het Topografisch Bureau van Oorlog, uitgegeven op last van Z.M. den Koning. A.C. Kruseman (Haarlem).
- STIBOKA**, 1973, *De Bodemkaart van Nederland schaal 1:50.000: toelichting bij kaartblad 7 West* (Groningen). STIBOKA (Wageningen).
- Stouthamer, E. & Berendsen, H.J.A.**, 2007, Avulsion: the relative roles of autogenic and allogenic processes. *Sedimentary Geology* **198**: 309–325. doi: [10.1016/j.sedgeo.2007.01.017](https://doi.org/10.1016/j.sedgeo.2007.01.017).
- Tavernier, R.**, 1946, L'évolution du Bas Escaut au Pléistocène supérieur. *Géologie: Bulletin de la Société belge de Géologie* **65**: 106–125.
- Tavernier, R.**, 1948, Les formations quaternaires de la Belgique en rapport avec l'évolution morphologique du pays. *Bulletin de la Société belge de Géologie* **62**: 609–641.
- Ten Ancher, T.J.**, 2012, Leven met de Vecht: Schokland-P14 en de Noordoostpolder in het Neolithicum en de Bronstijd. Universiteit van Amsterdam (Amsterdam): 699 pp. <http://hdl.handle.net/11245/1.363926>.
- Ten Cate, J.A.M. & Maarleveld, G.C.**, 1977, *Geomorfologische kaart van Nederland schaal 1 : 50 000*. Toelichting op de legenda. Stichting voor Bodemkartering (Wageningen)/Rijks Geologische Dienst (Haarlem).
- Tesch, P.**, 1930, *Eenige toelichting bij de Geologische kaart van Nederland 1: 50.000*. (Leiden.)
- Tesch, P.**, 1942, De geologische kaart van Nederland en hare beteekenis voor verschillende doeleinden. *Mededeelingen van de Geologische Stichting serie D*: 39 pp.
- TNO**, 2013, *Lithostratigrafische Nomenclator van de Ondiepe Ondergrond, versie 2013*. Available at [www.dinoloket.nl/nomenclator-ondiep](http://www.dinoloket.nl/nomenclator-ondiep), last accessed on 20 December 2019.
- Toonen, W.H.J.**, 2013, A Holocene flood record of the Lower Rhine. *Utrecht University* (Utrecht): 204 pp. [http://dspace.library.uu.nl/handle/1874/282871](https://dspace.library.uu.nl/handle/1874/282871).
- Törnqvist, T.E.**, 1993, Fluvial sedimentary geology and chronology of the Holocene Rhine-Meuse delta, the Netherlands. *Utrecht University* (Utrecht): 169 pp.
- Törnqvist, T.E. & Van Dijk, G.J.**, 1993, Optimizing sampling strategy for radiocarbon dating of Holocene fluvial systems in a vertically aggrading setting. *Boreas* **22**: 129–145.
- Törnqvist, T.E., De Jong, A.F.M., Oosterbaan, W.A. & Van der Borg, K.**, 1992, Accurate dating of organic deposits by AMS <sup>14</sup>C measurement of macrofossils. *Radiocarbon* **34**: 566–577.
- Van Asselen, S., Stouthamer, E. & van Asch, T.W.J.**, 2009, Effects of peat compaction on delta evolution: a review on processes, responses, measuring and modeling. *Earth-Science Reviews* **92**: 35–51. doi: [10.1016/j.earscirev.2008.11.001](https://doi.org/10.1016/j.earscirev.2008.11.001).
- Van Beek, R.**, 2009, Reliëf in tijd en ruimte. Interdisciplinair onderzoek naar bewoning en landschap van Oost-Nederland tussen vroege prehistorie en middeleeuwen. *Wageningen University* (Wageningen): 641 pp.
- Van Beek, R., Gouw-Bouman, M.T.I.J. & Bos, J.A.A.**, 2015, Mapping regional vegetation developments in Twente (the Netherlands) since the Late Glacial and evaluating contemporary settlement patterns. *Netherlands Journal of Geosciences* **94**: 1–27. doi: [10.1017/njg.2014.40](https://doi.org/10.1017/njg.2014.40).

- Van den Berg, M.W.**, 2012, Geomorphological and soil science-based mapping (1945–1995). In: Floor, P. (ed.): Dutch Earth Sciences – development and impact. KNGMG (The Hague): 171–173.
- Van den Berg, M.W. & Den Otter, C.**, 1993, Toelichtingen bij de geologische kaart van Nederland 1: 50.000, blad Almelo Oost/Denekamp (28O/29). Rijks Geologische Dienst (Haarlem).
- Van de Plassche, O.**, 1985, Time-limit assessment of some Holocene transgressive and regressive periods in the northern Netherlands. *Eiszeitalter und Gegenwart* 35: 43–48.
- Van der Meij, M.**, 2014, De geomorfologie van het Gelderse rivierengebied – actualisering van de geomorfologische kaart. Wageningen University and Research.
- Van der Meulen, M.J., Van Gessel, S.F. & Veldkamp, J.G.**, 2005, Aggregate resources in the Netherlands. *Netherlands Journal of Geosciences* 84: 379–387.
- Van der Meulen, M.J., Maljers, D., Van Gessel, S.F. & Gruijters, S.H.L.L.**, 2007, Clay resources in the Netherlands. *Netherlands Journal of Geosciences* 86: 117–130.
- Van der Meulen, M.J., Doornenbal, J.C., Gunnink, J.L., Stafleu, J. & Schokker, J.**, 2013, 3D geology in a 2D country: perspectives for geological surveying in the Netherlands. *Netherlands Journal of Geosciences* 92: 217–241.
- Van der Spek, A.J.F. & Beets, D.J.**, 1992, Mid-Holocene evolution of a tidal basin in the western Netherlands: a model for future changes in the northern Netherlands under conditions of accelerated sea-level rise? *Sedimentary Geology* 80: 185–197.
- Van der Valk, L.**, 1992, Mid- and Late-Holocene coastal evolution in the beach-barrier area of the Western Netherlands. *Vrije Universiteit Amsterdam* (Amsterdam): 235 pp. [dare.uvu.nl/bitstream/handle/1871/12719/tekst.pdf?sequence=1](http://dare.uvu.nl/bitstream/handle/1871/12719/tekst.pdf?sequence=1).
- Van der Valk, L.**, 1996, Coastal barrier deposits in the central Dutch coastal plain. *Mededelingen Rijks Geologische Dienst* 57: 133–199.
- Van Dinter, M.**, 2013, The Roman Limes in the Netherlands: how a delta landscape determined the location of the military structures. *Netherlands Journal of Geosciences/Geologie en Mijnbouw* 92: 11–32. doi: [10.1017/S0016774600000251](https://doi.org/10.1017/S0016774600000251).
- Van Lanen, R.J., Kosian, M.C., Groenewoudt, B.J., Spek, T. & Jansma, E.**, 2015, Best travel options: modelling Roman and early-medieval routes in the Netherlands using a multi-proxy approach. *Journal of Archaeological Science. Reports* 3: 144–159. doi: [10.1016/j.jasrep.2015.05.024](https://doi.org/10.1016/j.jasrep.2015.05.024).
- Van Liere, W.J.**, 1948, De bodemgesteldheid van het Westland. Wageningen University (Wageningen): 151 pp. Available at <http://edepot.wur.nl/188674>.
- Van Renswoude, J. & Habermehl, D.S.**, 2017, Opgraveningen te Houten-Castellum. Bewoning langs een restgeul in de IJzertijd, Romeinse tijd en Vroege Middeleeuwen. VUhs Archeologie. Zuidnederlandse Archeologische Rapporten 65, DANS. doi: [10.17026/dans-25f-zv7y](https://doi.org/10.17026/dans-25f-zv7y).
- Van Rummelen, F.F.F.E.**, 1972, Toelichtingen bij de Geologische kaart van Nederland 1:50.000. Blad Walcheren, Rijks Geologische Dienst (Haarlem).
- Van Wallenburg, C.**, 1966, De bodem van Zuid-Holland: toelichting bij blad 6 van de bodemkaart van Nederland schaal 1: 200.000. Wageningen: 101 pp. <http://library.wur.nl/WebQuery/clc/speccol/138669>.
- Van Zijverden, W.K.**, 2017, After the deluge: a palaeogeographical reconstruction of Bronze Age West-Frisia (2000–800 BC). Leiden University (Leiden): 143 pp.
- Veenbos, J.S.**, 1949, Bodemkartering van de Friese Wouden. Boor & Spade 3: 86–93. <http://edepot.wur.nl/110099>.
- Vernes, R.W., Van Doorn, T.H., Bierkens, M.F.P., Van Gessel, S.F. & De Heer, E.**, 2005, Van gidslaag naar hydrogeologische eenheid: toelichting op de totstandkoming van de dataset REGIS II.
- Vink, T.**, 1926, De Lekstreek: een aardrijkskundige verkenning van een bewoond deltagebied. (Paris/Amsterdam): 432 pp. <https://dspace.library.uu.nl/handle/1874/298419>.
- Vis, G.-J., Cohen, K.M., Westerhoff, W.E., Veen, J.H., Hijma, M.P., Van der Spek, A.J.F. & Vos, P.C.**, 2015, Paleogeography. In: Shennan, I., Long, A.J. & Horton, B. (eds.): Handbook of sea-level research, Wiley-Blackwell (Oxford): 514–534.
- Von Frijtag Drabbe, C.A.J.**, 1954, Aerial photograph and photo interpretation: deel I Post glacial phenomena in the Netherlands. Topografische Dienst (Delft).
- Vos, P.C.**, 2006, Toelichting bij de nieuwe paleogeografische kaarten van Nederland. Nationale Onderzoekagenda Archeologie (Amersfoort): 1–15.
- Vos, P.C.**, 2015a, Origin of the Dutch coastal landscape: – long-term landscape evolution of the Netherlands during the Holocene described and visualized in national, regional and local palaeogeographical map series. *Barkhuis* (Groningen).
- Vos, P.C.**, 2015b, Compilation of the Holocene palaeogeographical maps of the Netherlands. In: Vos, P.C. (ed.): Origin of the Dutch coastal landscape. *Barkhuis* (Groningen): 50–81.
- Vos, P.C. & Van Heeringen, R.M.**, 1997, Holocene geology and occupation history of the Province of Zeeland. *Mededelingen Nederlands Instituut voor Toegepaste Geowetenschappen TNO* 59: 5–109.
- Vos, P.C. & De Vries, S.**, 2013, 2e generatie palaeogeografische kaarten van Nederland (versie 2.0). Deltares (Utrecht). [www.archeologieinnederland.nl](http://www.archeologieinnederland.nl).
- Vos, P.C. & Knol, E.**, 2015, Holocene landscape reconstruction of the Wadden Sea area between Marsdiep and Weser. *Netherlands Journal of Geosciences/Geologie en Mijnbouw* 94: 157–183. doi: [10.1017/njg.2015.4](https://doi.org/10.1017/njg.2015.4).
- Vos, P.C., Rieffe, E.C. & Bulten, E.E.B.**, 2007, Nieuwe geologische kaart van Den Haag en Rijswijk.
- Vos, P.C., Bazelmans, J., Weerts, H.J.T. & van der Meulen, M.J.** 2011, Atlas van Nederland in het Holoceen. Bert Bakker (Amsterdam): 94 pp.
- Vos, P., IJsselstijn, M., Jongma, S. & De Vries, S.**, 2017, Het ontstaan van Westland-Delfland, gebaseerd op paleolandschappelijk onderzoek en getij-systeemkennis. *Delftse Archeologische Rapporten* 130. *Archeologie Delft / Sidestone Press* (Leiden): 90 pp.
- Wallinga, J., Davids, F. & Dijkmans, J.W.A.**, 2007, Luminescence dating of Netherlands sediments. *Netherlands Journal of Geosciences/Geologie en Mijnbouw* 86: 179–196.
- Weerts, H.J.T.**, 1996, Fluvial, aeolian and organic facies units in the Rhine-Meuse delta. In: Weerts, H.J.T. (ed.): Complex confining layers: architecture and hydraulic properties of Holocene and Late-Weichselian deposits in the fluvial Rhine-Meuse delta, the Netherlands. *Netherlands Geographical Studies* 213 (Utrecht): 15–56.
- Weerts, H.J.T. & Berendsen, H.J.A.**, 1995, Late Weichselian and Holocene fluvial palaeogeography of the southern Rhine-Meuse delta (the Netherlands). *Netherlands Journal of Geosciences/Geologie en Mijnbouw* 74: 199–212.
- Weerts, H.J.T., Cleveringa, P., De Lang, F.D. & Westerhoff, W.E.**, 2000, De lithostratigrafische indeling van Nederland: formaties uit het Tertiair en Kwartair Versie 2000. TNO rapport NITG 00-95-A: 38 pp.
- Weerts, H.J.T., Westerhoff, W.E., Cleveringa, P., Bierkens, M.F.P., Veldkamp, J.G. & Rijsdijk, K.F.**, 2005, Quaternary geological mapping of the lowlands of The Netherlands, a 21st century perspective. *Quaternary International* 133–134: 159–178. doi: [10.1016/j.quaint.2004.10.011](https://doi.org/10.1016/j.quaint.2004.10.011).
- Westerhoff, W.E.**, 2012, The second generation 1:50,000 maps (1953–2000): adding the third dimension. In: Floor, P. (ed.): Dutch Earth Sciences – development and impact. KNGMG (The Hague): 173–174.
- Westerhoff, W.E., Wong, T.E. & Geluk, M.C.**, 2003, De opbouw van de ondergrond. In: De Mulder, E.F.J., Geluk, M.C., Ritsema, I., Westerhoff, W.E. & Wong, T.E. (eds): De ondergrond van Nederland, vol. 7. Nederlands Instituut voor Toegepaste Geowetenschappen TNO (Utrecht): 247–352.
- Willems, W.J.H.**, 1986, Romans and Batavians. a regional study in the Dutch Eastern River Area, University of Amsterdam (Amsterdam).
- Woolderink, H.A.G., Kasse, C., Cohen, K.M., Hoek, W.Z. & Van Balen, R.T.**, 2018, Spatial and temporal variations in river terrace formation, preservation, and morphology in the Lower Meuse Valley, the Netherlands. *Quaternary Research* 91: 570–583.
- Zagwijn, W.H.**, 1986, Nederland in het Holoceen. Sdu (The Hague).