

A. Nisbet

VOL. 11, PART 1

JUNE 1958

PROCEEDINGS
OF THE
EDINBURGH MATHEMATICAL SOCIETY

WHITTAKER MEMORIAL NUMBER

CONTENTS

D. MARTIN: Sir Edmund Whittaker, F.R.S.	<i>page 1</i>
G. TEMPLE: Whittaker's Work on the Integral Representation of Harmonic Functions	<i>page 11</i>
R. A. RANKIN: Sir Edmund Whittaker's Work on Automorphic Functions	<i>page 25</i>
A. C. AITKEN: The Contributions of E. T. Whittaker to Algebra and Numerical Analysis	<i>page 31</i>
J. L. SYNGE: Whittaker's Contributions to the Theory of Relativity	<i>page 39</i>
J. MCCONNELL: Whittaker's Correlation of Physics and Philosophy	<i>page 57</i>
J. FULTON: The Sir Edmund Whittaker Memorial Prize	<i>page 69</i>

OLIVER AND BOYD
EDINBURGH: TWEEDDALE COURT
LONDON: 39A WELBECK STREET, W.1

THE EDINBURGH MATHEMATICAL SOCIETY

The Edinburgh Mathematical Society was instituted in 1883 for the promotion and extension of Mathematical Science—Pure and Applied.

Candidates for membership are nominated at one Ordinary Meeting of the Society and the candidature is voted upon at the next, a majority of at least two-thirds of the members present being necessary for election. Ordinary Members pay subscriptions to the funds of the Society at the times and of the amounts specified in the Rules. Members whose subscriptions are not in arrears receive free of charge one copy of each of the Society's publications. Additional copies and back numbers—as far as these are in print—are charged at a discount on the published price. Further information regarding membership may be obtained from the Secretary.

PROCEEDINGS OF THE EDINBURGH MATHEMATICAL SOCIETY AND THE EDINBURGH MATHEMATICAL NOTES

The Society publishes the Proceedings of the Edinburgh Mathematical Society and the Edinburgh Mathematical Notes. The Proceedings contain papers embodying the results of research that is original in matter or manner, and the Notes contain material of a less specialised nature. Members of the Society may submit papers for consideration with regard to publication; papers from non-members can be communicated by a member. Manuscripts of papers received cannot be accepted if not in a form suitable for submitting to the printer. Authors are advised to retain a copy of anything they may send for publication as the Society cannot accept responsibility for any loss. Manuscripts of papers for publication should be sent in the first instance to the Secretary.

The current price of the Proceedings is ten shillings and sixpence per part, there being four parts to a volume. Copies of the current number and back numbers, where available, can be obtained from

Oliver and Boyd
Tweeddale Court
Edinburgh 1

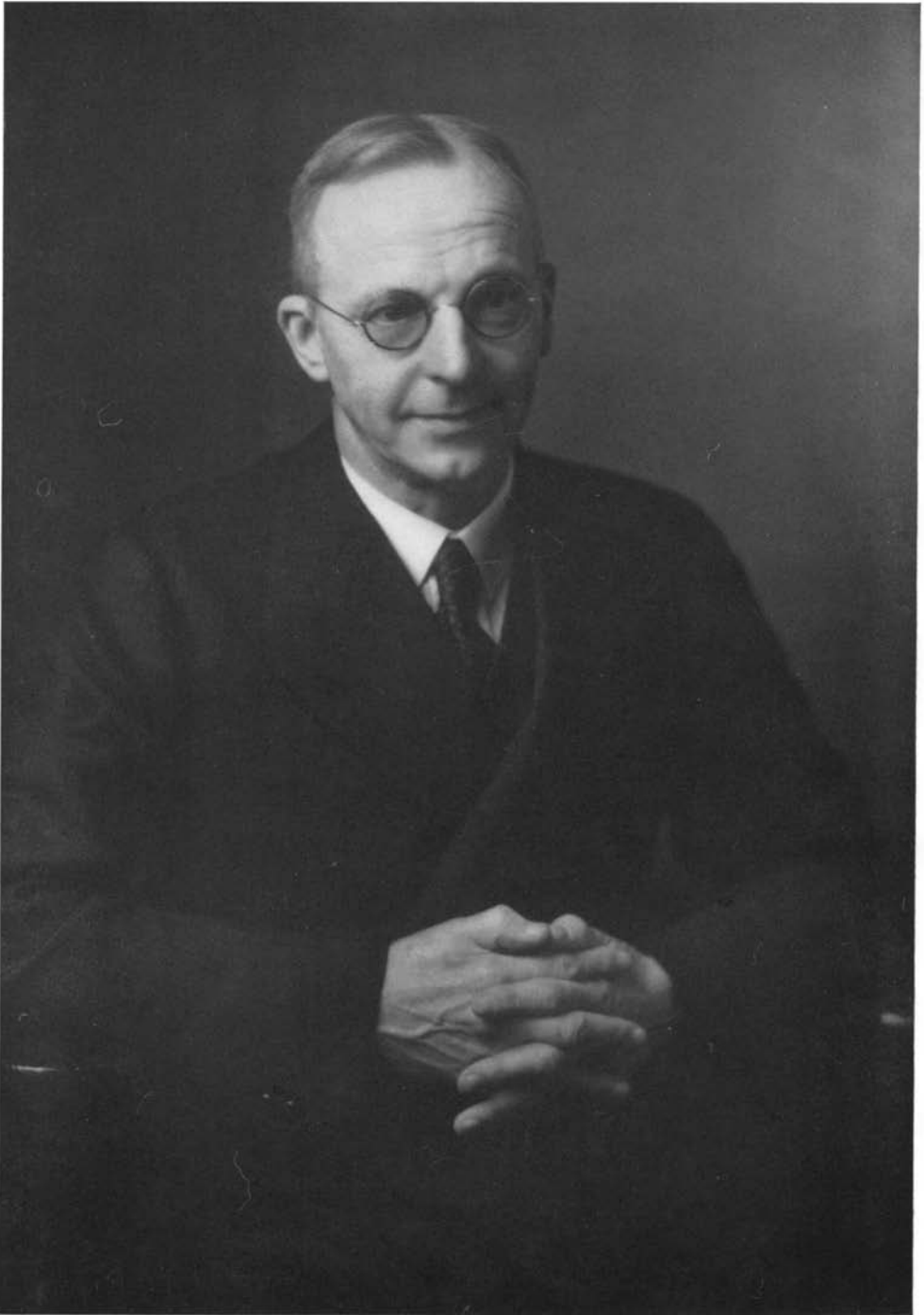
The Secretary will be pleased to receive gifts of back numbers of the Proceedings as certain of these are scarce and there is a demand from libraries for them.

All communications concerning the Library should be addressed to

The Librarian
The Edinburgh Mathematical Society
16 Chambers Street
Edinburgh 1

All other communications should be addressed to

The Secretary
The Edinburgh Mathematical Society
16 Chambers Street
Edinburgh, 1



E. T. Whittaker
1932.