


Developing the Driving and Dementia Roadmap: a knowledge-to-action process

Elaine Stasiulis,^{1,2}  Gary Naglie,^{1,2,3,4} Sarah Sanford,^{1,2} Patricia Belchior,⁵ Alexander Crizzle,⁶ Isabelle Gélinas,⁵ Barbara Mazer,⁵ Paige Moorhouse,⁷ Anita Myers,⁸ Michelle M. Porter,⁹ Brenda Vrkljan,¹⁰ Mark J. Rapoport,^{11,12} and on behalf of the Canadian Consortium on Neurodegeneration in Aging Driving and Dementia Team

¹Rotman Research Institute, Baycrest Health Sciences, Toronto, Ontario M6A 2E1, Canada

²Department of Medicine, Baycrest Health Sciences, Toronto, Ontario M6A 2E1, Canada

³KITE Research Institute, University Health Network, Toronto, Ontario M5G 2A2, Canada

⁴Department of Medicine and Institute of Health Policy, Management and Evaluation, University of Toronto, Toronto, Ontario, M5T 1R8, Canada

⁵Faculty of Medicine and Health Sciences, McGill University and Centre de recherche de l'Institut universitaire de gériatrie de Montréal (CRIUGM), Montréal, Quebec H3G 2M1, Canada

⁶School of Public Health, University of Saskatchewan, Saskatoon, Saskatchewan S7N 2Z4, Canada

⁷Division of Geriatric Medicine, Dalhousie University, Halifax, Nova Scotia B3H 2E1, Canada

⁸School of Public Health Sciences, University of Waterloo, Waterloo, Ontario N2L 3G1, Canada

⁹Faculty of Kinesiology and Recreation, University of Manitoba, Winnipeg, Manitoba R3T 2N2, Canada

¹⁰Faculty of Health Sciences, McMaster University, Hamilton, Ontario L8N 3Z5, Canada

¹¹Geriatric Psychiatry, Sunnybrook Health Sciences, Toronto, Ontario M4N 3M5, Canada

¹²Department of Psychiatry, University of Toronto, Toronto, Ontario, M5T 1R8, Canada

ABSTRACT

Objectives: Despite three decades of research, gaps remain in meeting the needs of people with dementia and their family/friend carers as they navigate the often-tumultuous process of driving cessation. This paper describes the process of using a knowledge-to-action (KTA) approach to develop an educational web-based resource (i.e. toolkit), called the Driving and Dementia Roadmap (DDR), aimed at addressing some of these gaps.

Design: Aligned with the KTA framework, knowledge creation and action cycle activities informed the development of the DDR. These activities included systematic reviews; meta-synthesis of qualitative studies; interviews and focus groups with key stakeholders; development of a Driving and Dementia Intervention Framework (DD-IF); and a review and curation of publicly available resources and tools. An Advisory Group comprised of people with dementia and family carers provided ongoing feedback on the DDR's content and design.

Results: The DDR is a multi-component online toolkit that contains separate portals for current and former drivers with dementia and their family/friend carers. Based on the DD-IF, various topics of driving cessation are presented to accommodate users' diverse stages and needs in their experiences of decision-making and transitioning to non-driving.

Conclusion: Guided by the KTA framework that involved a systematic and iterative process of knowledge creation and translation, the resulting person-centered, individualized and flexible DDR can bring much-needed support to help people with dementia and their families maintain their mobility, community access, and social and emotional wellbeing during and post-driving cessation.

Key words: dementia, driving, toolkit, knowledge translation, education, Internet-based interventions

Introduction

Driving cessation for older adults with dementia and their family/friend carers is a complex, challenging, and emotion-laden process (Holden and Pusey, 2021; Sanford *et al.*, 2019, 2020) that is considered

Correspondence should be addressed to: Dr. Elaine Stasiulis, Rotman Research Institute, Baycrest Health Sciences, 3560 Bathurst Street, Toronto, Ontario M6A 2E1, Canada. Phone: +1 416-785-2500 ext. 6319; Fax: +1 647-788-1199. Email: estasiulis@baycrest.org Received 13 Mar 2022; revision requested 01 Jun 2022; revised version received 14 Nov 2022; accepted 11 Dec 2022.

one of the toughest issues in dementia care (McCracken *et al.*, 2001). At stake in the decision to stop driving is the person's independence, identity, social connectedness, and quality of life counterbalanced with their own and others' safety (Carr and O'Neill, 2015; Perkinson *et al.*, 2005). Driving cessation in older adulthood is associated with many adverse health and psychosocial consequences (e.g. depression, anxiety, increased risk of institutionalization) (Chihuri *et al.*, 2016) that are further amplified for people with dementia. The decision to stop driving is complicated by the absence of reliable and valid office-based fitness to drive screening measures (Molnar *et al.*, 2006) along with adequate training and education available for healthcare professionals on this topic (Sinnott *et al.*, 2018). In addition, there is lack of understanding about dementia's impact on driving ability (Liddle *et al.*, 2013), lack of insight about one's own declining abilities (Scott *et al.*, 2020b), family carers' and primary care physicians' avoidance of difficult conversations about driving (Adler and Kuskowski, 2003; Byszewski *et al.*, 2010), limited access to alternative transportation (Holden and Pusey, 2021; Sanford *et al.*, 2020), and intense emotional ramifications (Sanford *et al.*, 2019).

In addition to these challenges, more than three decades of research on driving cessation and dementia have highlighted recommendations and strategies aimed at supporting ongoing mobility and health. Nevertheless, gaps in meeting the needs of people with dementia and their family carers continue to prevail (Sanford *et al.*, 2020; Stasiulis *et al.*, 2020). Such a deficiency in the available research knowledge and its application in practice is known in the knowledge translation field as the "knowledge-to-action (KTA) gap" (Graham *et al.*, 2006). We aimed to address this gap at the individual and family levels through the development of an intervention framework and a driving cessation toolkit directed to people with dementia and their family/friend carers.

People with dementia and their family members are largely ill-equipped to manage the challenges and ethical dilemmas surrounding the decision to stop driving (LaFrance *et al.*, 2021). However, with the administration of timely education and resources, the risk of unsafe driving and injury, as well as the potential trauma and the negative effects of this major life transition, can be lessened (Sanford *et al.*, 2020). Studies indicate that early discussions about driving and about dementia's progressive impact on driving abilities can increase the likelihood of shared decision-making by people with dementia (Byszewski *et al.*, 2010; Scott *et al.*, 2020b). Planning for, and providing practical support to help people maintain their participation in social and daily activities, is considered integral to

lessening the grief and anger associated with the loss of independence and identity (Holden and Pusey, 2021; Sanford *et al.*, 2019). Equipping family carers with knowledge and resources is important as they are often depended on to observe and assess the person with dementia's driving abilities (Adler *et al.*, 2000) and play a key role in decision-making about driving (Adler, 2010; D'Ambrosio *et al.*, 2009). In addition, family members report feeling ill-equipped yet responsible for navigating the licensing and reporting system (Chacko *et al.*, 2015; Liddle *et al.*, 2016). Supportive strategies and resources to help family carers manage the emotional impact of driving cessation, including feelings of resentment, frustration, burden, and guilt are scarce (Chacko *et al.*, 2015; Sanford *et al.*, 2020).

Despite the rapidly increasing number of drivers with dementia and the need for resources, few evidence-based interventions exist (Rapoport *et al.*, 2017; Sinnott *et al.*, 2019). Literature describing the development and/or evaluation of other interventions and resources include manual-based toolkits (Byszewski *et al.*, 2013; Jouk and Tuokko, 2017), a decision aid targeted to people with dementia (Carmody *et al.*, 2014; Chang *et al.*, 2021) and more recently a health-care provider delivered driving cessation program for drivers with dementia that includes a module for family carers (Scott *et al.*, 2019, 2020a, 2020b). Positive outcomes have been found for some of these interventions including lower rates of depressive symptoms, increased likelihood to discuss driving cessation, increased number of trips out of home after driving cessation (Rapoport *et al.*, 2017), and improved knowledge that helped with decision-making among people with dementia (Carmody *et al.*, 2014; Chang *et al.*, 2021).

Despite the potential availability of these, albeit limited, interventions, and other resources, people with dementia and family/friend carers report a lack of support and information (Croston and Meuser, 2009; Liddle *et al.*, 2013). During our own research activities to develop a multi-faceted educational resource, we identified a gap in the access (i.e. easily retrievable), usability (i.e. content, language, and design that is appropriate for people with dementia), trustworthiness (i.e. confidence that the information is valid and based on evidence), and knowledge (i.e. awareness) about existing resources and tools to support people with dementia and their family carers. (Rapoport *et al.*, 2019; Sanford *et al.*, 2016).

To bridge the divide between what is known about driving cessation and dementia (i.e. challenges and strategies to support driving cessation) and what is actually used in the real world (tools and resources), we produced an intervention framework that identified key gaps in which knowledge users

require information and support. These gaps informed the development of a toolkit, called the Driving and Dementia Roadmap (DDR). Barac and colleagues (2014, p.2) define toolkits as “the bundling of a combination of educational materials . . . presented in a variety of formats used to inform and improve health behaviors for diverse audiences, including health practitioners, patients, community and health organizations, policy makers and for the public.” As a knowledge translation strategy in healthcare, toolkits are considered an effective approach for facilitating evidence use in practice and improving health outcomes (Barac *et al.*, 2014; Yamada *et al.*, 2015). This paper reports on our process of using a KTA approach in developing a web-based resource/toolkit to support people with dementia and their family/friend carers in the decision-making process and transition to non-driving. We summarize the myriad of research activities comprising the knowledge creation and action cycle phases that resulted in the DDR. Notably, our detailed reporting of the knowledge creation phase is an area in knowledge translation research not well documented in previous studies employing the KTA framework (Field *et al.*, 2014). This paper builds on earlier publications about driving cessation and dementia in International Psychogeriatrics by addressing the identified challenges that people with dementia and family/friend carers face in the decision-making and transition to non-driving (Liddle *et al.*, 2016, 2013) that healthcare providers are often not equipped to deal with (Scott *et al.*, 2020a, 2020b; O’Neill, 2020; Cameron *et al.*, 2017). It also takes up the call for needed research on knowledge translation/implementation science in the psychogeriatric field (Pachana, 2020, 2021; Parker and Syme, 2021).

Methods

KTA framework

We chose the well-established KTA knowledge translation conceptual framework (Graham *et al.*, 2006) because it provides a practical and flexible approach, geared to applying research findings and leading to the development of knowledge tools or products – a primary objective of our knowledge translation plan. It also ensures the involvement of knowledge users, which aligns with our commitment to person-centered care (Graham *et al.*, 2006). The KTA attends to the ways in which knowledge is created, adapted, and evaluated in local contexts. The framework is comprised of two separate but interrelated parts: 1) knowledge creation and 2) action cycle. Knowledge creation is conceptualized as a funnel involving three phases of knowledge distillation including “knowledge inquiry” (i.e. primary studies);

“synthesis” (i.e. systematic reviews, scoping reviews, and meta-analyses); and the resulting “knowledge product” (e.g. decision aids, frameworks, and toolkits). This final phase reflects the most refined knowledge that is tailored in user-friendly fashion to end-users based on their informational needs, thus facilitating the KTA goal of knowledge uptake and application (Graham *et al.*, 2006).

Through a series of seven phases, the action cycle outlines the process of activities required for effective knowledge application. In practice, the phases are not necessarily sequential, with movement between the phases and the cycles occurring in an iterative and dynamic manner. Critical to this overall process is the involvement of knowledge users (e.g. people with dementia, family/friend carers, healthcare and service providers) who can help to ensure the applicability of the knowledge products (Straus *et al.*, 2009).

Our work within the KTA Framework is depicted in Figure 1. In this paper, we report mainly on the knowledge creation process, and the intersection with two of the action cycle phases (adapting knowledge to local contexts and assessing barriers to knowledge use) that pertains to the work conducted thus far. In our application of the KTA framework, we have slightly modified the knowledge creation phases by incorporating *two* funnels of knowledge distillation: One leading to the creation of our intervention framework, the “Driving and Dementia Intervention Framework (DD-IF)” and the second to the production of our toolkit, the “DDR,” which is directly informed by the DD-IF.

Knowledge creation part I: production of the DD-IF

The first funnel of our knowledge creation activities resulted in the production of the DD-IF. Our overall purpose in Part I was to distill knowledge that would inform the content and design of a supportive driving cessation intervention for people with dementia and their family/friend carers. More details about the studies, including analyses that were conducted that led to the findings, can be found in the associated referenced papers.

Synthesis: systematic review and meta-synthesis

As part of the “synthesis phase,” we conducted a systematic review on driving cessation interventions in individuals with dementia and older adults (Rapoport *et al.*, 2017) as well as on interventions targeting other major life transitions in later life (Vrkljan *et al.*, 2019). Systematic reviews were chosen to gain an overview of interventions in the literature and to identify effective strategies that could be considered in supporting driving cessation.

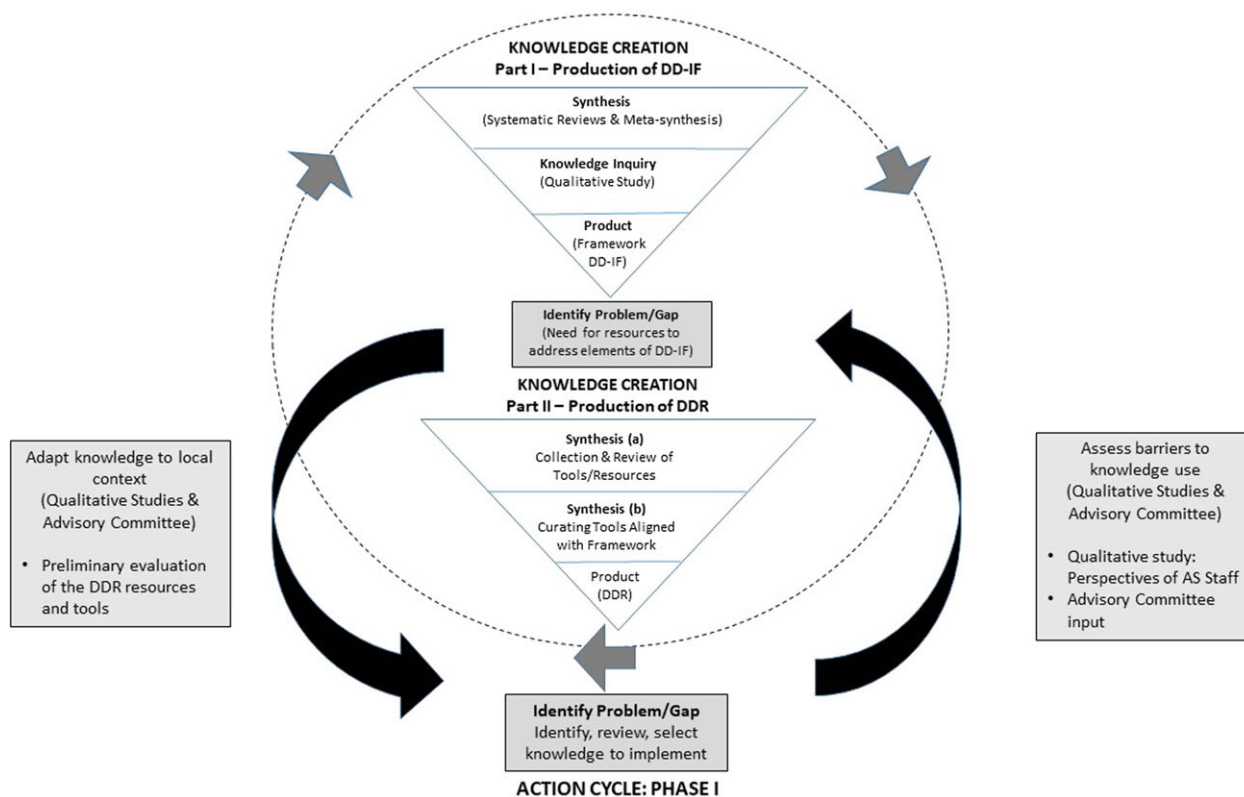


Figure 1. Adapted KTA Framework.

To obtain a deeper understanding of the factors that influence the experiences of driving cessation in the context of dementia and thus inform the development of effective programs to support individuals through this process, a meta-syntheses of qualitative studies on dementia and driving were also conducted (Sanford *et al.*, 2020). The synthesis of knowledge via systematic reviews and meta-syntheses is considered foundational to knowledge translation (Straus *et al.*, 2009).

Knowledge inquiry: qualitative study

The “knowledge inquiry” phase involved a qualitative study exploring key stakeholders’ perspectives on the process and strategies that facilitate decision-making, coping, and adapting to driving cessation (Sanford *et al.*, 2019). Qualitative methods were chosen to facilitate an in-depth exploration of affected individuals’ emotional experiences, viewpoints, and needs in order to further understanding about the driving cessation process. Three focus groups were conducted with 10 family carers and in-depth interviews took place with 10 healthcare providers, six organizational representatives, two former drivers with dementia, and three family members. Analytic themes were generated through an iterative and inductive process of standard thematic analysis (Braun and Clarke, 2006) (Supplementary Table).

Product: DD-IF

Based on evidence from the knowledge inquiry (i.e. qualitative study on key stakeholders’ perspectives) and synthesis phases (i.e. systematic reviews and meta-synthesis), we identified elements to include in a driving cessation intervention. The Trans-theoretical Model (TM) of behavior change (Prochaska and Velicer, 1997) was employed to inform and guide the content of these elements and their organization across a continuum of driving cessation decision-making and adapting stages. The TM posits that driving behavior change is impacted by the actions of each successive stage. For example, planning for alternative ways to remain mobile in the contemplative stage directs behavior in the decision to stop driving and adaptation to post-driving (Sanford *et al.*, 2020). The resulting DD-IF (Figure 2) encompasses the practical and emotional elements that characterize the driving cessation process and formed the foundation on which the DDR was built.

Knowledge creation part II: production of the DDR

Our *second* knowledge creation funnel, comprised of further knowledge synthesis activities, culminated in the production of an early version of the DDR. Through the processes detailed below,

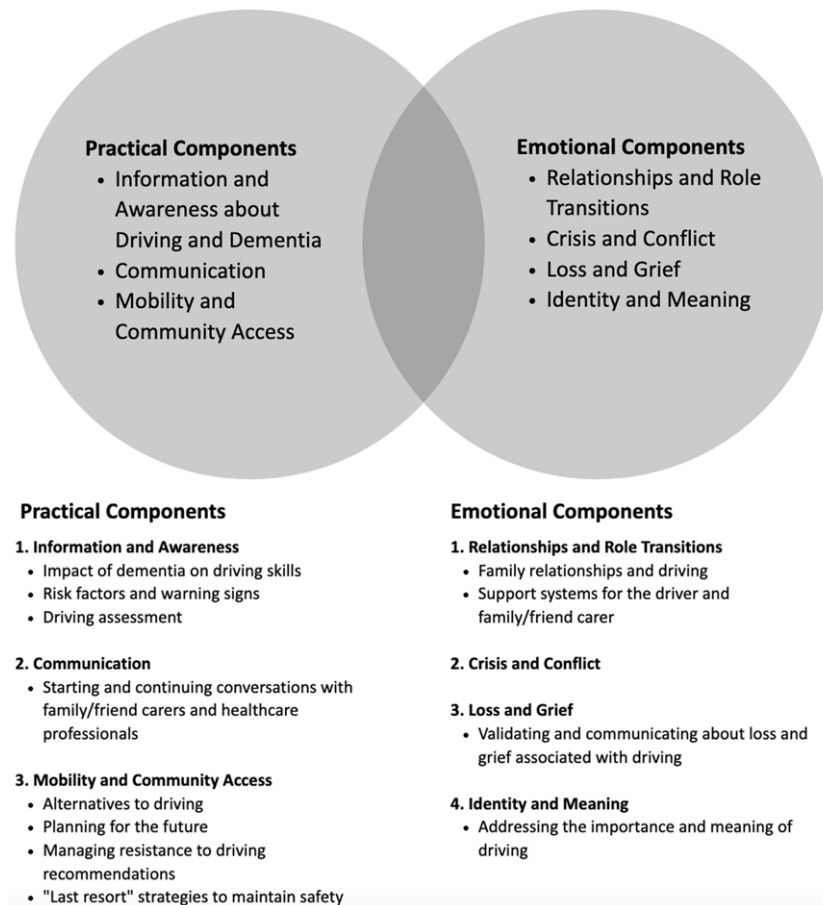


Figure 2. Driving and Dementia Intervention Framework.

knowledge about driving cessation was distilled into a usable format for people with dementia and family/friend carers.

Synthesis II(a): collection and review of resources and tools (Figure 3)

In the first phase, relevant resources and tools were collected via informal consultations with other stakeholders (e.g. clinician researchers, healthcare providers), reviewing publications of relevant tools, as well as Internet and website searches. For our purposes, a “resource” contains more than one tool or segments of text that can be extracted and applied to elements of the DD-IF. Internet Google and relevant website (e.g. Alzheimer Society) searches involved using key terms such as “driving cessation” and “tools” or “resources.” Three co-investigators (MR, GN, SS) reviewed the list of 40 resources and 13 tools that were identified and selected those for further review by the wider investigative team based on whether they addressed driving or driving cessation; were created for people with dementia and/or family/friend carers; were applicable to multiple geographic areas; and were up-to-date.

In the second phase, the selected 12 resources and 7 tools were then reviewed and their suitability was determined by four researcher pairs. Areas of assessment included content, accessibility, published evidence, relevance to driving cessation and people with dementia, and to the target groups (i.e. drivers and former drivers with dementia, family/friend carers, healthcare/service providers). Each reviewer’s dyad reached a consensus based on the assessment variable. Discussions to resolve conflicts and finalize the assessments were held between reviewer pairs and a third-party researcher who had previously reviewed the resources/tools. Two resources were excluded and a total of 10 resources and seven tools, which included guidebooks, videos, driving assessments, and information sheets were selected.

Synthesis II(b): resources and tools curated and aligned with DD-IF

The next step of the knowledge distillation and refinement process involved curating the resources and tools identified and selected in synthesis II(a) (Figure 1) to align with the elements (e.g.

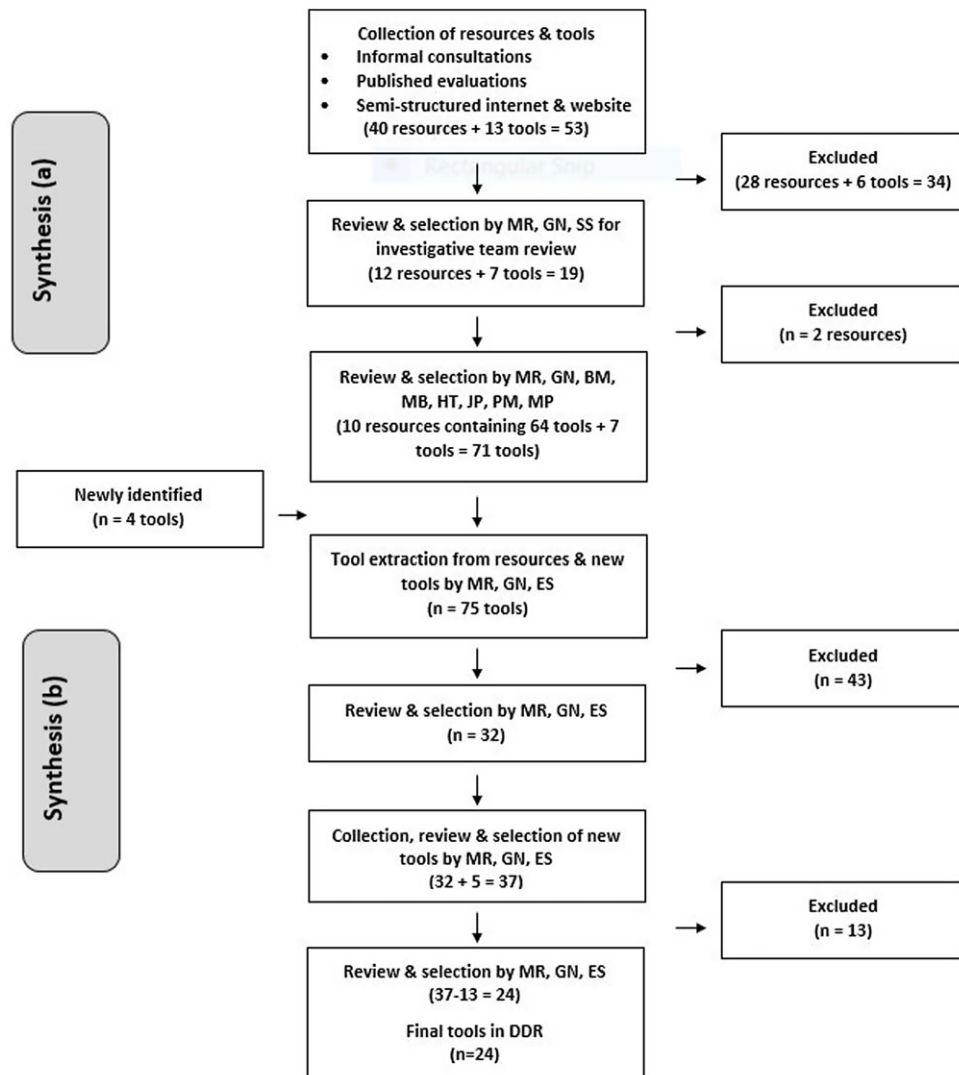


Figure 3. Knowledge Creation Part II.

communication, mobility, and community access) of the DD-IF. From the ten selected resources, 64 distinct tools (e.g. worksheets, sections of text) were extracted to be reviewed. A refined review of the 64 tools and the remaining 7 tools plus four new tools identified by the research team, for a total of 75 tools, was conducted independently by three researchers (ES, GN, MR) who then met to discuss their assessments (e.g. format, style, readability, alignment with the DD-IF elements, uniqueness). A consensus to select 32 tools and 5 additional newly identified tools was achieved. These were later pared down to 24 tools to minimize replication of content (Table 1). Written permission was obtained to include the tools in the DDR.

Product: early version of the DDR

Concurrent with the knowledge creation activities in synthesis II(a), we developed an early PowerPoint demonstration version of the DDR – a collection of

selected tools to be aligned with the DD-IF elements. The initial iteration of the DDR, prior to the final selection of 24 tools (synthesis activities II(b)), took the form of a website created by our research team using Google Sites, a no-cost website building platform. The purpose of this site was to familiarize users (stakeholder study participants) with the elements of the DD-IF and the initially selected resources, and tools, which were categorized as guidebooks (resources containing distinct tools such as worksheets), driving assessments, videos, and advanced driving directives. Our intent was to use this version of the DDR in the action cycle of the KTA for its further development and refinement once the final list of resources and tools was refined.

Action cycle: adapting and refining to implement the DDR

In tandem with the knowledge creation phases, we engaged with phases of the action cycle to ensure the

Table 1. Tools in driving and dementia roadmap

IMPACT OF DEMENTIA ON DRIVING			
TOOL NAME	SOURCE	FORMAT	AUDIENCE
Driving with Alzheimer's Disease	US Department of Transportation	Video	Current & former drivers with dementia
Driving and Dementia – Not If but When	P. Moorhouse	Video	Current & former drivers with dementia
KNOWING WHEN IT IS UNSAFE TO DRIVE AND MAKING THE DECISION TO STOP DRIVING			
TOOL NAME	SOURCE	FORMAT	AUDIENCE
Simple Driving Assessment	Canadian Automobile Association	PDF	Current drivers with dementia
Online Screening Assessment	Institute for Driving, Activity, Participation and Technology (I-DAPT)	Online	Family/friend carers of current drivers with dementia
Signs Your Loved One with Dementia is Not Safe to Drive	Careblazers	Video	Family/friend carers of current drivers with dementia
Warning Signs Checklist	The Hartford	PDF Worksheet	Current drivers with dementia & family/friend carers
Agreement with my Family about Driving	The Hartford	PDF Advanced Driving Directive	Current drivers with dementia & family/friend carers
Dementia and Driving Decision Aid	University of Wollongong	PDF	Current drivers
A Bump in the Road	Alzheimer's Association	Video	Family/friend carers of current drivers with dementia
Doctor's Letter	Regional Geriatric Program of Eastern Ontario	PDF	Family/friend carers of current drivers with dementia
How to Find Out if Your Loved One with Dementia is Safe to Drive	Careblazers	Video	Family/friend carers of current drivers with dementia
TALKING ABOUT STOPPING TO DRIVE AND ADJUSTING TO NON-DRIVING			
TOOL NAME	SOURCE	FORMAT	AUDIENCE
Conversation Planner	The Hartford	Worksheet	Family/friend carers of current drivers with dementia
Supportive Conversation	Alzheimer's Association	Video	Family/friend carers of current drivers with dementia
Starting the Conversation	Alzheimer's Australia Vic	Video	Family/friend carers of current drivers with dementia
STAYING MOBILE AND PLANNING AHEAD			
TOOL NAME	SOURCE	FORMAT	AUDIENCE
Alternative Transportation Planning	The Hartford	PDF Worksheet	Current and former drivers; family/friend carers
Driving Activities: Where, When and Why	The Hartford	PDF Worksheet	Current and former drivers: family/friend carers
Plan in Place	Alzheimer's Association	Video	Current drivers
Transportation Cost Calculator	The Hartford	PDF Worksheet	Current and former drivers: family/friend carers
Staying Active, Mobile and Connected	Alzheimer's Australia Vic	Video	Family/friend carers of current and former drivers with dementia
Common Challenges: Driving*	UCLA Alzheimer's and Dementia Care Program	Video	Family/friend carers of current drivers with dementia

EMOTIONAL IMPACT OF NOT DRIVING

TOOL NAME	SOURCE	FORMAT	AUDIENCE
Circle of Support	The Hartford	PDF Worksheet	Current and former drivers; family/friend carers
A Close Call	Alzheimer's Association	Video	Current and former drivers; family/friend carers

WHEN THE PERSON WITH DEMENTIA WON'T STOP DRIVING

TOOL NAME	SOURCE	FORMAT	AUDIENCE
Dementia and Driving	Teepa Snow-Positive Approach to Care®	Video (x2)	Family/friend carers of current drivers with dementia
How to Stop Your Loved One with Dementia from Driving	Careblazers	Video	Family/friend carers of current drivers with dementia

evolving DDR's accessibility and relevance to people with dementia and family/friend carers. This was an iterative and dynamic process, as characteristic of the KTA framework, which included reviewing and selecting knowledge (e.g. DDR content, resources and tools), adapting knowledge to local contexts (value, usefulness, and appropriateness of the DDR), and assessing the determinants of knowledge use (barriers and facilitators) (Graham *et al.*, 2006; Straus *et al.*, 2009). The research activities, as described below, informed the ongoing development and refinement of the DDR, including its content, design, and format. Drawing from end-users' experiences to tailor the DDR and adapt it to local contexts was a key objective in this phase.

Preliminary evaluation of the DDR resources and tools

Prior to the Google Sites iteration of the DDR, a preliminary evaluation of the DDR resources and tools and their alignment with the DD-IF as presented in PowerPoint by the principal investigators (GN and MJR) was conducted. The objective was to collect preliminary data on key informants' perspectives about the DDR and to inform subsequent data collection processes for the purpose of facilitating the DDR's effective implementation in community-based settings (e.g. AS organizations) (Naglie *et al.*, 2018). A focus group was held in collaboration with an AS organization in Ontario following the presentation. The focus group ($n = 8$) was comprised of six family members of drivers or former drivers with dementia, one former driver with dementia, and a social worker. Participants were asked about their impressions of the DD-IF and the DDR. Data were analyzed using inductive thematic coding (Braun and Clarke, 2006) (Supplementary Table). The main themes that emerged included

recommendations to consider the DDR users' age, family context, and stage of driving cessation as well as ensuring that the DDR promoted a sense of autonomy. These findings informed the organization of the DDR to include separate portals targeting people with dementia and family/friend carers of people with dementia who were still driving and who had stopped driving.

Qualitative study: perspectives of AS staff

As a precursor to our implementation evaluation of the DDR in Canadian AS organizations, we conducted a qualitative study exploring the perspectives of 15 AS staff on the Google Sites web-based version of the DDR (Stasiulis *et al.*, 2020). In addition to obtaining feedback on the DDR, our objective was to inform strategies that would support implementation in these settings. Overall, the DDR was favorably viewed as addressing a gap in accessible and trusted resources on driving cessation for people with dementia and their family/friend carers. Resulting recommendations included ensuring that materials directed to people with dementia are understandable (i.e. appropriate design and language); incorporating resources that address the emotional impact of driving cessation, strategies to encourage discussions about driving as well as information on region-specific licensing regulations (Supplementary Table).

Building the DDR: engaging with the advisory group

The building of the final web-based DDR involved a team of web developers, a graphic designer, and a plain language content writer. Over a period of ten months, after refining the pilot DDR based on study participants' feedback described above, we engaged in an ongoing iterative fashion with an Advisory

Group to obtain detailed feedback on the DDR's content as well as on its format and design. The Advisory Group was comprised of four people living with dementia and four family carers. The content and tools were described as "excellent." While advisors liked the DDR's overall format and design, they suggested increasing font sizes, collapsing topics into fewer categories to reduce the number of choices, using images with more diverse representation of people (e.g. various cultural backgrounds and ages), and employing positive person-centered language (i.e. avoiding negative terms such as "burden").

Results

The product: web-based DDR

Built on a web-based platform, the DDR (www.drivinganddementia.ca) contains separate portals aimed at three specific audiences: people with dementia, family/friend carers, and healthcare providers (the latter was developed during manuscript preparation and is not described further in this manuscript) (see Figure 4 for a schematic outline of the DDR). Drawing from the findings of the qualitative studies and informed by the TM, each portal is divided into two sections targeting the person with dementia based on their driving status, as "still driving" or "no longer driving." Within each, users are presented with sections on topics related to driving cessation derived from the DD-IF (Figure 2). Content in each section was formulated based on literature reviews, qualitative studies, available resources, as well as the clinical experiences of two of the authors who are physicians specialized in care for older adults (GN, MR). As shown in Table 1, 24 discrete tools consisting of worksheets, videos, driving assessments, and decision aids, which individually address different aspects of the driving cessation process, were incorporated into the DDR as they aligned with the audience type and stage of driving cessation. An additional resource will include a lay person's synopses and links to the pertinent licensing and reporting regulations for medically unfit drivers in each Canadian province and territory. In summary, the DDR provides a one-stop, online comprehensive repository of expertly reviewed tools with guided access to specific content and unique portals for people with dementia, family/friend carers who are at varied stages in the driving cessation process.

Discussion

This paper contributes to the knowledge translation literature as well as to the driving cessation and dementia field by detailing a KTA process that

resulted in a contextually relevant, accessible educational resource/toolkit, the DDR. To our knowledge, the DDR is the only online toolkit geared specifically to this audience that comprehensively addresses the fundamental aspects of decision-making and transitioning to non-driving. A critical component of the KTA framework (Graham *et al.*, 2006), which guided the DDR's development, was the involvement of key stakeholders (drivers with dementia, family and friend carers, healthcare and service providers) who participated in a series of knowledge exchange activities that enhanced the relevance, usability, and accessibility of the DDR. Although the content areas of the DDR align closely with the seven-module CarFreeMe-People with Dementia intervention (Scott *et al.*, 2020a), CarFreeMe is an intervention delivered by a health professional, whereas the DDR can be accessed directly by people with dementia and family carers.

The flexibility and adaptability of the KTA model proved conducive to our progression in developing the DDR that entailed *two* funnels of knowledge distillation in the knowledge creation phase. From our research activities in the *first* funnel (i.e. systematic reviews, meta-analyses, qualitative study), we identified critical elements to address in the driving cessation process that were operationalized into the DD-IF. In addition to the gap in interventions supporting people with dementia and family carers, we identified an opportunity to improve the accessibility and usability of publicly available resources and tools. Hence, with the aim to build a scalable resource (i.e. toolkit) guided by the elements of the DD-IF, we continued our knowledge creation activities as depicted in the *second* funnel. The collection, review, distillation, and curation of resources and tools culminated in an early version of the DDR. Our adaptation of the KTA framework to include two knowledge creation funnels attests to the KTA's practicality and flexibility allowing for its application in idiosyncratic ways that were integral to our study (Field *et al.*, 2014). The detailed reporting of our knowledge creation phase also contributes to the knowledge translation field. According to a systematic review, most studies employing the KTA framework in an integrative way provided details only on the action cycle phase of their projects (Field *et al.*, 2014).

Research activities in the action cycle (review and curation of resources/tools, two qualitative studies and Advisory Group feedback) that followed our pilot version of the DDR resulted in substantial revisions to the DDR. These changes reflect the objective of the action cycle, which is to ensure that the application of knowledge results in actions that ultimately enhance health status (Graham *et al.*, 2006); in our case the health and wellness of people

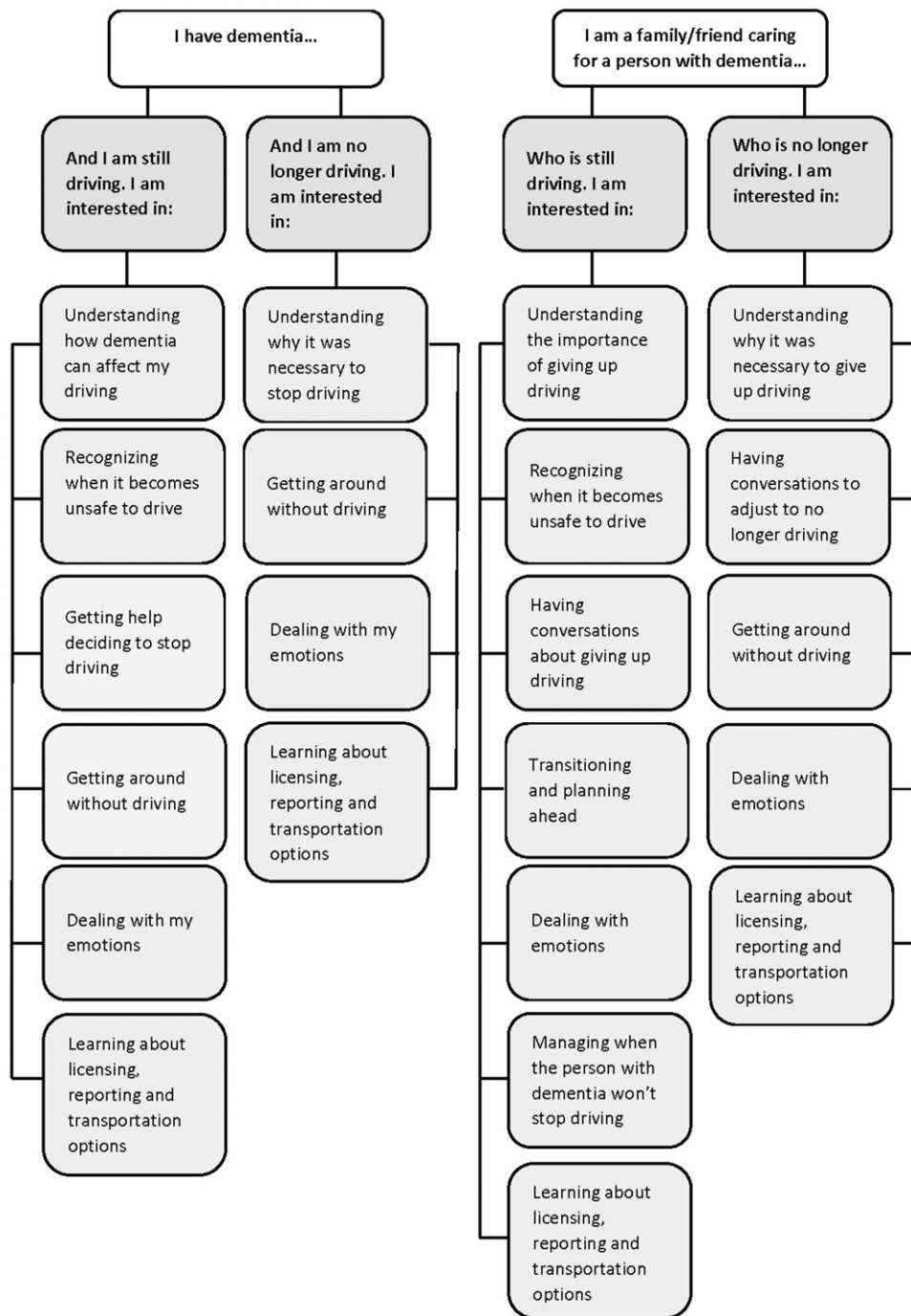


Figure 4. Driving and Dementia Roadmap Outline.

with dementia and their family/friend carers. For action to occur, the knowledge being translated must be relevant, appropriate, applicable, timely, and suit the needs of the end-users (Campbell, 2010). By following these three action cycle steps: 1) reviewing and selecting knowledge; 2) adapting knowledge to local contexts; 3) and assessing barriers and facilitators to knowledge use, we integrated changes to the pilot DDR's content, design, and mode of delivery to facilitate implementation and

uptake in community-based settings that support people with dementia.

Changes included extracting tools from identified resources (e.g. guidebooks) and writing content on topics related to the elements of the DD-IF, rather than solely integrating or directing users to third-party resources and tools. Other revisions derived from the action cycle activities were related to the DDR's format, design, and language style. For example, to facilitate an individualized approach

to driving cessation support, separate portals for people with dementia still driving or no longer driving were incorporated. To promote a sense of autonomy, edits to the content were made to reflect person-centered and dementia-friendly language. Other revisions to ensure the DDR's usability for people with dementia included reduced text, less topic choices, and numbering headings. These adaptations are illustrative of the iterative and dynamic movement that can occur between the action cycle and knowledge creation components (Graham *et al.*, 2006). The action cycle processes also confirmed the relevance and applicability of the content areas such as awareness about dementia's impact on driving, strategies to encourage discussions about driving, and addressing the emotional implications.

The factors that have contributed to the popularity of toolkits as a knowledge translation strategy in healthcare were also appealing considerations for choosing a toolkit format. Namely, toolkits offer flexible tool selection, tend to be practical and action-oriented (Barac *et al.*, 2014; Yamada *et al.*, 2015), and are a relatively low-cost knowledge translation intervention (Salbach *et al.*, 2021). Located on a virtual platform, toolkits, such as the DDR, are more easily accessible to a wider range of audiences (Barac *et al.*, 2014). In addition to implementing the DDR in organizations and clinical settings that support older adults with dementia (e.g. Alzheimer Society, memory clinics), we will employ dissemination strategies (e.g. social media) to reach people outside of these settings. This is consistent with feedback provided by our AS study participants, who noted the importance of resources that could be accessed by people who are not involved with such organizations (Stasiulis *et al.*, 2020).

Our employment of the KTA framework aligns with research on the effectiveness of toolkits and the recommendation by implementation science to use theories, models, and frameworks as a base to build interventions such as toolkits (Damschroder, 2020; Salbach *et al.*, 2021; Yamada *et al.*, 2015). Utilizing this framework meant that we were able to meet all the recommendations and suggestions for toolkit development recently produced by a panel of experts that included: usability testing (via feedback from potential users); exploring the needs of potential users early in the developmental phase; incorporating behavioral theory (i.e. we used the TM); and including pilot testing (Hempel *et al.*, 2019). The resulting characteristics of the DDR include features identified as positively impacting the application of toolkits into practice such as specifying the targeted audiences; identifying the objectives of the resources and tools (Davis *et al.*, 2017); and providing guidance on how to use the tools (Yamada *et al.*, 2015).

These quality characteristics of toolkits, however, do not always ensure effective implementation of the toolkit in practice (Yamada *et al.*, 2015). Contextual factors, such as organizational needs and structures, local barriers, and practice facilitation support (i.e. engagement skills), can impact uptake of the DDR (Davis *et al.*, 2017). Research detailing the implementation process and outcomes of toolkits is very limited (Hempel *et al.*, 2019; Yamada *et al.*, 2015). Currently, our team is analyzing the results of an implementation evaluation of the DDR we conducted in AS organizations across Canada. To guide the evaluation, we followed the latter phases of the KTA framework (e.g. select, tailor and implement interventions and monitor knowledge use) (Graham *et al.*, 2006).

A limitation of the field, which impacted the DDR's development was the lack of published evidence supporting the tools being considered for inclusion in the DDR. This meant that the evaluation process tended to be based on the subjective views of the reviewer dyads about acceptability, adaptability, and effectiveness. Nevertheless, our team of clinician reviewers with expertise in older adult care and driving and dementia conducted a rigorous process to identify and review publicly available resources, and tools. This collaborative process of independent and collective reviews as well as feedback from AS frontline staff and our Advisory Group contributed to the trustworthiness of the selected tools. Another field limitation was the dearth of available tools that addressed the emotional implications of driving cessation. To address this gap, we drew from the limited available resources to develop content about the emotions that family/friend carers and people with dementia may experience when they stop driving as well as strategies to help them manage these feelings.

As a web-based resource, the DDR may pose limitations to individuals who do not have adequate access to the internet or are not comfortable using technology, particularly as dementia progresses. However, preliminary findings from our implementation evaluation of the DDR in AS settings indicated that AS staff and family/friend carers were able to facilitate people with dementia's effective use of the DDR by going through it with them (unpublished).

Conclusion

Driving cessation is a major life transition that not only affects drivers with dementia but also their family/friend carers and health professionals (Holden and Pusey, 2021). In developing the DDR, our aim was to address the complex challenges and

ramifications that driving cessation poses for individuals during this transition process. Guided by the KTA framework, we engaged in a systematic and iterative process of knowledge creation and translation, resulting in a person-centered, individualized, accessible, and flexible resource. As detailed in this paper, the KTA process was integral to the DDR's development. Amidst the limited accessibility of knowledge, tools, and resources, the DDR is a much-needed support that can help people with dementia and their families maintain their mobility, community participation as well as social and emotional wellbeing.

Conflict of interest

None.

Source of funding

This project is part of the Canadian Consortium on Neurodegeneration in Aging (CCNA; Grant number 201312CNA-322265-CNA-CFAF-32054). The CCNA is supported by a grant from the Canadian Institute of Health Research with funding from several partners. Funding for this project was also provided by the AHSC AFP Innovation Fund and the Centre for Aging and Brain Health Innovation. Funding for this project was also provided by the Centre for Aging and Brain Health Innovation and the Ontario AHSC AFP Innovation Fund.

Description of authors' roles

E. Stasiulis and S. Sanford managed the project at separate periods and were involved in all aspects of study design, implementation, and analysis as well as reviewing and curating tools and resources. E. Stasiulis prepared the first draft of the manuscript. S. Sanford contributed to all drafts of the manuscript. G. Naglie and M. Rapoport were co-principal investigators of the project, supervised all aspects of study design and implementation including reviewing and curating the resources and tools as well as contributing to the writing of the paper. P. Moorhouse provided input into study design, reviewed resources and tools for inclusion in the DDR, and reviewed the final manuscript. A. Crizzle was involved in data collection contributing to the DDR and in reviewing the draft manuscript. M. Porter was involved in reviewing resources and tools as well as the draft manuscript. B. Vrkljan and B. Mazer co-lead the review of transitions in older adults

and edited the final manuscript. B. Mazer also reviewed the resources and tools. A. Myers was involved in the grant proposal and reviewing the manuscript. P. Belchior reviewed the resources and tools for inclusion in the DDR and reviewed the final transcript. I. Gélinas contributed to the conceptualization and design of the project and reviewed the manuscript.

Acknowledgements

We would like to thank Vivian Nash and Steve Mahfouda of Blue Lemon Media for the web design of the DDR; Naomi Shacter for creating the DDR logo; and Carolyn Wilby for ensuring the DDR's content was clearly written and appropriate for the targeted audiences. We are also thankful for Harvir Sandhu's preparation of the driving license and reporting regulations for each of the provinces and territories in Canada. Finally, we are grateful to Michel Bédard for his contributions to the project.

Supplementary material

To view supplementary material for this article, please visit <https://doi.org/10.1017/S1041610222001235>

References

- Adler, G., Rottunda, S., Rasmussen, K. and Kuskowski, M. (2000). Caregivers dependent upon drivers with dementia. *Journal of Clinical Geropsychology*, 6, 83–90. <https://doi.org/10.1023/A:1009532408845>.
- Adler, G. (2010). Driving decision-making in older adults with dementia. *Dementia*, 9, 45–60. <https://doi.org/10.1177/1471301209350289>.
- Adler, G. and Kuskowski, M. (2003). Driving cessation in older men with dementia. *Alzheimer Disease & Associated Disorders*, 17, 68–71. <https://doi.org/10.1097/00002093-200304000-00003>.
- Barac, R., Stein, S., Bruce, B. and Barwick, M. (2014). Scoping review of toolkits as a knowledge translation strategy in health. *BMC Medical Informatics and Decision Making*, 14, 121. <https://doi.org/10.1186/s12911-014-0121-7>.
- Braun, V. and Clarke, V. (2006). Using thematic analysis in psychology. *Qualitative Research in Psychology*, 3, 77–101. <https://doi.org/10.1191/1478088706qp0630a>.
- Byzewski, A. M. *et al.* (2013). When it is time to hang up the keys: the driving and dementia toolkit – for persons with dementia (PWD) and caregivers – a practical resource. *BMC Geriatrics*, 13, 117. <https://doi.org/10.1186/1471-2318-13-117>.
- Byzewski, A. M., Molnar, F. J. and Aminzadeh, F. (2010). The impact of disclosure of unfitness to drive in persons with newly diagnosed dementia: patient and

- caregiver perspectives. *Clinical Gerontologist*, 33, 152–163. <https://doi.org/10.1080/07317110903552198>.
- Cameron, D. H. et al.** (2017). Development of a decision-making tool for reporting drivers with mild dementia and mild cognitive impairment to transportation administrators. *International Psychogeriatrics*, 29, 1551–1563. <https://doi.org/10.1017/S1041610217000242>.
- Campbell, B.** (2010). Applying knowledge to generate action: a community-based knowledge translation framework. *Journal of Continuing Education in the Health Professions*, 30, 65–71. <https://doi.org/10.1002/chp.20058>.
- Carmody, J., Potter, J., Lewis, K., Bhargava, S., Traynor, V. and Iverson, D.** (2014). Development and pilot testing of a decision aid for drivers with dementia. *BMC Medical Informatics and Decision Making*, 14, 1–7. <https://doi.org/10.1186/1472-6947-14-19>.
- Carr, D. B. and O'Neill, D.** (2015). Mobility and safety issues in drivers with dementia. *International Psychogeriatrics*, 27, 1613–1622. <https://doi.org/10.1017/S104161021500085X>.
- Chacko, E. E., Wright, W. M., Worall, R. C., Adamson, C. and Cheung, G.** (2015). Reactions to driving cessation: a qualitative study of people with dementia and their families. *Australasian Psychiatry*, 23, 496–499. <https://doi.org/10.1177/1039856215591326>.
- Chang, H. C. et al.** (2021). Mandarin version of dementia and driving decision aid (DDDA): development and stakeholder evaluation in Taiwan. *International Journal of Older People Nursing*, 16, e12370. <https://doi.org/10.1111/opn.12370>.
- Chihuri, S. et al.** (2016). Driving cessation and health outcomes in older adults. *Journal of the American Geriatrics Society*, 64, 332–341. <https://doi.org/10.1111/jgs.13931>.
- Croston, J. and Meuser, T. M.** (2009). Driving retirement in older adults with dementia. *Topics in Geriatric Rehabilitation*, 25, 154–162. <https://doi.org/10.1097/TGR.0b013e3181a103fd>.
- D'Ambrosio, L. A., Coughlin, J. F., Mohyde, M., Carruth, A., Hunter, J. and Stern, R.** (2009). Caregiver communications and the transition from driver to passenger among people with dementia. *Topics in Geriatric Rehabilitation*, 25, 33–42. <https://doi.org/10.1097/TGR.0b013e31819149ee>.
- Damschroder, L. J.** (2020). Clarity out of chaos: use of theory in implementation research. *Psychiatry Research*, 283, 112461. <https://doi.org/10.1016/j.psychres.2019.06.036>.
- Davis, M. M., Howk, S., Spurlock, M., McGinnis, P. B., Cohen, D. J. and Fagnan, L. J.** (2017). A qualitative study of clinic and community member perspectives on intervention toolkits: “unless the toolkit is used it won't help solve the problem. *BMC Health Services Research*, 17, 497. <https://doi.org/10.1186/s12913-017-2413-y>.
- Field, B., Booth, A., Iliott, I. and Gerrish, K.** (2014). Using the Knowledge to Action framework in practice: a citation analysis and systematic review. *Implementation Science*, 9, 172. <https://doi.org/10.1186/s13012-014-0172-2>.
- Graham, I. D. et al.** (2006). Lost in knowledge translation: time for a map? *Journal of Continuing Education in the Health Professions*, 26, 13–24. <https://doi.org/10.1002/chp.47>.
- Hempel, S. et al.** (2019). Quality improvement toolkits: recommendations for development. *American Journal of Medical Quality*, 34, 538–544. <https://doi.org/10.1177/1062860618822102>.
- Holden, A. and Pusey, H.** (2021). The impact of driving cessation for people with dementia – an integrative review. *Dementia*, 20, 1105–1123. <https://doi.org/10.1177/1471301220919862>.
- Jouk, A. and Tuokko, H.** (2017). Development of “down the road”: an interactive toolkit about driving cessation for dementia caregivers. *Educational Gerontology*, 43, 499–510. <https://doi.org/10.1080/03601277.2017.1355669>.
- Lafrance, M. N., Dreise, E., Gouliquer, L. and Poulin, C.** (2021). We're not doing it to be nasty. *Canadian Journal on Aging / La Revue canadienne du vieillissement*, 41, 1–8. <https://doi.org/10.1017/S0714980820000409>.
- Liddle, J., Bennett, S., Allen, S., Lie, D. C., Standen, B. and Pachana, N. A.** (2013). The stages of driving cessation for people with dementia: needs and challenges. *International Psychogeriatrics*, 25, 2033–2046. <https://doi.org/10.1017/S1041610213001464>.
- Liddle, J., Tan, A., Liang, P., Bennett, S., Allen, S., Lie, D. C. and Pachana, N. A.** (2016). The biggest problem we've ever had to face. *International Psychogeriatrics*, 28, 109–122. <https://doi.org/10.1017/S1041610215001441>.
- McCracken, P. N., Caprio-Triscott, J. A. and Dobbs, A. R.** (2001). Driving with dementia. *The Canadian Alzheimer Disease Review*, 14–20. Retrieved from, http://www.stacomcommunications.com/customcomm/Back-issue_pages/AD_Review/adPDFs/november2001/14.pdf.
- Molnar, F. J., Patel, A., Marshall, S. C., Man-Son-Hing, M. and Wilson, K.** (2006). Clinical utility of office-based cognitive predictors of fitness to drive in persons with dementia: a systematic review. *Journal of the American Geriatrics Society*, 54, 1809–1824. <https://doi.org/10.1111/j.1532-5415.2006.00967.x>.
- Naglie, G., Sanford, S., Rapoport, M. J. and CCNA Driving Cessation Team 16 Co-Investigators** (2018). Designing an intervention framework and toolkit to ease the decision-making and transition to non-driving for persons with dementia: initial perspectives from key stakeholders. *Alzheimer's & Dementia*, 14, P598–P599. <https://doi.org/10.1016/j.jalz.2018.06.679>.
- O'Neill, D.** (2020). Widening our horizons for promoting mobility and safety for drivers with dementia. *International Psychogeriatrics*, 32, 1389–1391. <https://doi.org/10.1017/S1041610220001374>.
- Pachana, N. A.** (2021). Using implementation science to progress psychogeriatrics. *International Psychogeriatrics*, 33, 847–849. <https://doi.org/10.1017/S1041610221001198>.
- Pachana, N. A.** (2020). Implementation science in psychogeriatrics. *International Psychogeriatrics*, 32, 1383–1385. <https://doi.org/10.1017/S104161022000407X>.
- Parker, C. P. and Syme, M.** (2021). Using social media to disseminate geroscience for implementation. *International Psychogeriatrics*, 33, 987–995. <https://doi.org/10.1017/S1041610220004044>.
- Perkinson, M. A. et al.** (2005). Driving and dementia of the Alzheimer type: beliefs and cessation strategies among stakeholders. *The Gerontologist*, 45, 676–685. <https://doi.org/10.1093/geront/45.5.676>.
- Prochaska, J. O. and Velicer, W. F.** (1997). The transtheoretical model of health behavior change. *American*

- Journal of Health Promotion*, 12, 38–48. <https://doi.org/10.4278/0890-1171-12.1.38>.
- Rapoport, M. J., Cameron, D. H., Sanford, S. and Naglie, G.** (2017). A systematic review of intervention approaches for driving cessation in older adults: driving cessation interventions. *International Journal of Geriatric Psychiatry*, 32, 484–491. <https://doi.org/10.1002/gps.4681>.
- Rapoport, M. J. et al.** (2019). Perspective from the field: designing the driving cessation in dementia intervention toolkit (DCD-IT). *The American Journal of Geriatric Psychiatry*, 27, S185–S186. <https://doi.org/10.1016/j.jagp.2019.01.099>.
- Salbach, N. M. et al.** (2021). The role of theory to develop and evaluate a toolkit to increase clinical measurement and interpretation of walking speed and distance in adults post-stroke. *Disability and Rehabilitation*, 44, 1–7. <https://doi.org/10.1080/09638288.2020.1867653>.
- Sanford, S. et al.** (2016). Strategies to facilitate decision-making about driving cessation for people with dementia: perspectives from healthcare professionals and other stakeholders. *Alzheimers & Dementia*, 12, P1012–P1013. <https://doi.org/10.1016/j.jalz.2016.06.2086>.
- Sanford, S. et al.** (2019). Independence, loss, and social identity: perspectives on driving cessation and dementia. *Dementia*, 18, 2906–2924. <https://doi.org/10.1177/1471301218762838>.
- Sanford, S., Naglie, G., Cameron, D. H. and Rapoport, M. J.** (2020). Subjective experiences of driving cessation and dementia: a meta-synthesis of qualitative literature. *Clinical Gerontologist*, 43, 135–154. <https://doi.org/10.1080/07317115.2018.1483992>.
- Scott, T. L., Liddle, J., Mitchell, G., Beattie, E. and Pachana, N.** (2019). Implementation and evaluation of a driving cessation intervention to improve community mobility and wellbeing outcomes for people living with dementia: study protocol of the, CarFreeMe, for people with dementia program. *BMC Geriatrics*, 19, 66. <https://doi.org/10.1186/s12877-019-1074-6>.
- Scott, T. L. et al.** (2020a). Adaptation of the CarFreeMe driver retirement intervention to provide driving cessation support to older people living with dementia. *Brain Impairment*, 21, 247–258. <https://doi.org/10.1017/BrImp.2020.16>.
- Scott, T. L., Liddle, J., Pachana, N. A., Beattie, E. and Mitchell, G. K.** (2020b). Managing the transition to non-driving in patients with dementia in primary care settings: facilitators and barriers reported by primary care physicians. *International Psychogeriatrics*, 32, 1419–1428. <https://doi.org/10.1017/S1041610218002326>.
- Sinnott, C., Foley, T., Forsyth, J., McLoughlin, K., Horgan, L. and Bradley, C. P.** (2018). Consultations on driving in people with cognitive impairment in primary care: a scoping review of the evidence. *PLoS ONE*, 13, e0205580. <https://doi.org/10.1371/journal.pone.0205580>.
- Sinnott, C., Foley, T., Horgan, L., McLoughlin, K., Sheehan, C. and Bradley, C.** (2019). Shifting gears versus sudden stops: qualitative study of consultations about driving in patients with cognitive impairment. *BMJ Open*, 9, e024452. <https://doi.org/10.1136/bmjopen-2018-024452>.
- Stasiulis, E., Rapoport, M. J., Sivajohan, B. and Naglie, G.** (2020). The paradox of dementia and driving cessation: “It’s a hot topic”, “always on the back burner”. *The Gerontologist*, 60, 1261–1272. <https://doi.org/10.1093/geront/gnaa034>.
- Straus, S. E., Tetroe, J. and Graham, I.** (2009). Defining knowledge translation. *Canadian Medical Association Journal*, 181, 165–168. <https://doi.org/10.1503/cmaj.081229>.
- Vrkljan, B., Montpetit, A., Naglie, G., Rapoport, M. J. and Mazer, B.** (2019). Interventions that support major life transitions in older adulthood: a systematic review. *International Psychogeriatrics*, 31, 393–415. <https://doi.org/10.1017/S1041610218000972>.
- Yamada, J., Shorkey, A., Barwick, M., Widger, K. and Stevens, B.** (2015). The effectiveness of toolkits as knowledge translation strategies for integrating evidence into clinical care: a systematic review. *BMJ Open*, 5, e006808–e006808. <https://doi.org/10.1136/bmjopen-2014-006808>.