

# Smoking and the risk for bipolar disorder: evidence from a bidirectional Mendelian randomisation study

Jentien M. Vermeulen, Robyn E. Wootton, Jorien L. Treur, Hannah M. Sallis, Hannah J. Jones, Stanley Zammit, Wim van den Brink, Guy M. Goodwin, Lieuwe de Haan and Marcus R. Munafò

## Background

There is increasing evidence that smoking is a risk factor for severe mental illness, including bipolar disorder. Conversely, patients with bipolar disorder might smoke more (often) as a result of the psychiatric disorder.

## Aims

We conducted a bidirectional Mendelian randomisation (MR) study to investigate the direction and evidence for a causal nature of the relationship between smoking and bipolar disorder.

## Method

We used publicly available summary statistics from genome-wide association studies on bipolar disorder, smoking initiation, smoking heaviness, smoking cessation and lifetime smoking (i.e. a compound measure of heaviness, duration and cessation). We applied analytical methods with different, orthogonal assumptions to triangulate results, including inverse-variance weighted (IVW), MR-Egger, MR-Egger SIMEX, weighted-median, weighted-mode and Steiger-filtered analyses.

## Results

Across different methods of MR, consistent evidence was found for a positive effect of smoking on the odds of bipolar disorder (smoking initiation  $OR_{IVW} = 1.46$ , 95% CI 1.28–1.66,  $P = 1.44 \times 10^{-8}$ , lifetime smoking  $OR_{IVW} = 1.72$ , 95% CI 1.29–2.28,  $P = 1.8 \times 10^{-4}$ ). The MR analyses of the effect of liability to bipolar disorder on smoking

provided no clear evidence of a strong causal effect (smoking heaviness  $\beta_{IVW} = 0.028$ , 95% CI 0.003–0.053,  $P = 2.9 \times 10^{-2}$ ).

## Conclusions

These findings suggest that smoking initiation and lifetime smoking are likely to be a causal risk factor for developing bipolar disorder. We found some evidence that liability to bipolar disorder increased smoking heaviness. Given that smoking is a modifiable risk factor, these findings further support investment into smoking prevention and treatment in order to reduce mental health problems in future generations.

## Declaration of interest

W.v.d.B received fees in the past 3 years from Indivior, C&A Pharma, Opiant and Angelini. G.M.G. is a National Institute for Health Research (NIHR) Emeritus Senior Investigator, holds shares in P1vital and has served as consultant, advisor or CME speaker in the past 3 years for Allergan, Angelini, Compass Pathways, MSD, Lundbeck (Otsuka and Takeda), Medscape, Minervra, P1vital, Pfizer, Sage, Servier, Shire and Sun Pharma.

## Keywords

Smoking; bipolar affective disorders; Mendelian randomisation; risk factor; environmental.

## Copyright and usage

© The Royal College of Psychiatrists 2019.

There is an increasing disparity in the prevalence of cigarette smoking between the general population and people with severe mental illness such as bipolar disorder.<sup>1,2</sup> A meta-analysis including worldwide studies showed that smoking rates are much higher in people with bipolar disorder than in the general population ( $OR = 3.5$ , 95% CI 3.39–3.54).<sup>2</sup> This is important since in people with bipolar disorder smoking is associated with negative physical and mental health outcomes compared with non-smoking.<sup>3,4</sup> Smoking has been suggested as a risk factor for developing severe mental illness, including psychosis<sup>5</sup> and – to a lesser extent – bipolar disorder.<sup>6–9</sup> There is also an alternative explanation, namely that people with bipolar disorder initiate smoking or increase existing smoking. In the latest genome-wide association study (GWAS) of smoking, smoking initiation and heaviness and bipolar disorder were not found to be genetically correlated.<sup>10</sup> Smoking and schizophrenia are genetically correlated.<sup>10</sup> Nevertheless, smoking rates in bipolar disorder are also very high. A recent study showed, furthermore, that bipolar I disorder and schizophrenia and bipolar II disorder and major depressive disorder are highly correlated.<sup>11</sup> Moreover, previous findings support a causal relationship between smoking and other severe mental illness (e.g. schizophrenia and major depressive disorder).<sup>12</sup> It is therefore of interest to investigate the causal relationship between smoking and bipolar disorder. So far, very few observational studies have been used to investigate this relationship.<sup>6</sup> Observational results can be limited in their ability to determine causality, particularly because of residual

confounding and reverse causation. Mendelian randomisation (MR) is a method that aims to overcome these limitations. Therefore, our aim was to investigate the direction and causal nature of the relationship between smoking and bipolar disorder using a bidirectional MR approach. On the basis of the current evidence<sup>6,7,9</sup> and a strong genetic correlation between bipolar disorder and schizophrenia,<sup>11</sup> we hypothesised that smoking is a causal risk factor for bipolar disorder. On the basis of conflicting clinical findings<sup>8</sup> and the fact that smoking initiation often precedes the onset of bipolar disorder symptoms, we hypothesised that the liability to bipolar disorder is not a causal risk factor for smoking.

## Method

### Mendelian randomisation

In this MR study, genetic variants are used as instrumental variables and the plausibility of the findings depends on assumptions. The three key assumptions of MR are: (a) the multiple genetic variants associate with the risk factor of interest; (b) there are no unmeasured confounders of the associations between the genetic variants and outcome; and (c) the genetic variants affect the outcome only through their effect on the risk factor.<sup>13</sup> Pleiotropic effects refer to the effects of a genetic variant on multiple biological pathways, affecting the outcome either via the pathway under investigation, known as horizontal pleiotropy, or affecting other traits through

the risk factor, known as vertical pleiotropy.<sup>14</sup> Horizontal pleiotropy is problematic as it violates the third key assumption.

### Data sources and genetic instruments

In this study, multiple genetic variants that collectively explain some of the variance in the risk factors are used to investigate support for causal inferences with clinical outcomes. For smoking and bipolar disorder, genome-wide significant single nucleotide polymorphisms (SNPs) ( $P < 5 \times 10^{-8}$ ) from the most recently available GWASs were used as genetic instruments. No overlap existed in GWAS samples used for the exposure and outcome instruments.

### Data availability

For smoking initiation, we used summary data from the GWAS and Sequencing Consortium of Alcohol and Nicotine use (GSCAN) GWAS as an exposure and outcome variable.<sup>10</sup> GSCAN summary data about smoking heaviness and cessation from the GSCAN GWAS were used as an outcome variable only.<sup>10</sup> For lifetime smoking, we used summary data from the GWAS in the UK Biobank for the exposure and outcome variables.<sup>12</sup>

For bipolar disorder, genome-wide significant SNPs ( $P < 5 \times 10^{-8}$ ) from the most recently available GWAS were used as genetic instrument for the exposure.<sup>15</sup> When bipolar disorder was the outcome, we used the publicly available GWAS summary data made available by Psychiatric Genomics Consortium (<https://www.med.unc.edu/pgc/results-and-downloads/>).

### Smoking behaviour

#### Smoking initiation

For smoking initiation, we used summary data from a GWAS conducted by GWAS and Sequencing Consortium of Alcohol and Nicotine use (GSCAN) as an exposure and outcome variable. The GSCAN GWAS identified 378 independent significant loci from a sample of 1 232 091 individuals of European ancestry: these loci explained 2.3% of the variance in smoking initiation.<sup>10</sup> Data from the 23andMe subsample ( $n = 599\,289$ ) were excluded when smoking initiation was the outcome because genome-wide summary statistics were not publicly available for the 23andMe subsample. Smoking initiation (yes/no) was defined as having smoked >100 cigarettes over the course of your life, smoked every day for at least a month or ever smoked regularly. The GSCAN GWAS provided effect sizes calculated from  $z$ -values weighted by the average prevalence across all studies. The effect sizes for smoking initiation as the outcome are therefore presented as betas and correspond to the increase of one standard deviation in prevalence of smoking initiation.<sup>10</sup>

#### Smoking heaviness and cessation

To assess causal effects of smoking heaviness and smoking cessation on the risk for bipolar disorder, the analyses would have to be stratified into groups of smokers and non-smokers. However, in the current two-sample MR study this was not possible owing to a lack of data on smoking in the bipolar disorder GWAS. Therefore, summary data about smoking heaviness and cessation from the GSCAN GWAS were used as an outcome variable only (supplementary material, available at <https://doi.org/10.1192/bjp.2019.202>).<sup>10</sup>

#### Lifetime smoking

The recently developed lifetime smoking index is a measure that applies to all individuals (i.e. ever and never smokers), and among

smokers it captures smoking severity, length of exposure and cessation. This instrument does not require stratification and is therefore the best proxy to investigate a 'dose-response' effect on the risk for bipolar disorder. Therefore, we used lifetime smoking summary data from the GWAS in the UK Biobank.<sup>12</sup> This GWAS of lifetime smoking identified 126 independent genome-wide significant SNPs in a sample of 462 690 individuals of European ancestry.<sup>12</sup> It has been validated in an independent sample, where the 126 SNPs explained 0.36% of the variance in lifetime smoking, and against positive control disease outcomes (e.g. lung cancer).<sup>12</sup>

### Bipolar disorder

For bipolar disorder as an exposure, we used summary statistics on genome-wide significant SNPs ( $P < 5 \times 10^{-8}$ ) from the most recent GWAS, comprising 20 352 cases from Europe, North America and Australia and 31 358 controls of European descent.<sup>15</sup> This GWAS found 30 independent, genome-wide significant loci in the combined meta-analysis of the discovery GWAS and follow-up samples. The combined analyses also used 9412 cases and 137 760 controls from follow-up samples. The polygenic risk score, including all measured genetic variants, accounted for about 8% of the variance in diagnosis. In this data-set, three clinically recognised subtypes of bipolar disorder were present: bipolar I disorder ( $n = 14\,879$ ), bipolar II disorder ( $n = 3421$ ) and schizoaffective disorder bipolar type ( $n = 977$ ). When bipolar disorder was the outcome, we used the GWAS summary data made available by the Psychiatric Genomics Consortium with a similar number of bipolar disorder cases and controls (<https://www.med.unc.edu/pgc/results-and-downloads/>).<sup>15</sup>

### Statistical analyses

We used the MR-Base Package<sup>16</sup> in R version 3.5.1<sup>17</sup> for Windows to harmonise SNP information and conduct bidirectional summary-level MR analyses between smoking and bipolar disorder. The magnitude of the causal effect can be estimated by dividing the 'genetic variant-outcome' association by the 'genetic variant-risk factor' association.<sup>18</sup> Results were compared across the following methods: inverse-variance weighted (IVW), MR-Egger,<sup>19</sup> MR-Egger simulation extrapolation method (SIMEX),<sup>20</sup> weighted median,<sup>21</sup> weighted mode<sup>22</sup> and MR robust adjusted profile score (MR-RAPS)<sup>23</sup> (see supplementary material for a comparison of each method and their assumptions). A consistent direction of effect across all of these methods strengthens causal evidence, as each method makes different assumptions about pleiotropy.<sup>24</sup> Cochran's Q (for IVW) and Rucker's Q (for MR-Egger) statistics were therefore calculated to investigate heterogeneity between SNP causal effects and thus potential evidence of horizontal pleiotropy. Evidence of directional pleiotropy (whereby pleiotropic effects are biasing the estimates in the same direction) was also assessed using the MR-Egger intercept. The difference between Cochran's Q and Rucker's Q statistics ( $Q'$ ) was used to assess the extent to which MR-Egger was a better fit to the data than the IVW method. The intercept from MR-Egger provides a formal test for the presence of directional pleiotropy (whereby pleiotropic effects are biasing the estimates in the same direction). The validity of the MR-Egger method was also evaluated using the weighted and unweighted regression dilution  $I^2_{GX}$  statistic.<sup>20</sup> For values of  $I^2_{GX} < 0.9$ , MR-Egger SIMEX corrections are presented using the highest of the two regression dilution statistics. For values of  $I^2_{GX} < 0.6$ , MR-Egger and MR-Egger SIMEX are unreliable and so neither are performed. Furthermore, mean  $F$ -statistics were calculated to assess the strength of the genetic instruments used.<sup>25</sup> As a rule of thumb, values of the mean  $F$ -statistic >10 indicate that the results do not suffer from substantially weak instrument bias.<sup>18</sup> Lastly, we

applied Steiger filtering to remove the genetic variants that explain more variance in the outcome than the exposure, to avoid possible reverse causation.<sup>26</sup> For smoking initiation, lifetime smoking and bipolar disorder, we reported the number of variants that were used in the bidirectional analyses after removing insertions or deletions and harmonisation of the data (Table 1).

## Results

### Summary-level Mendelian randomisation of effect of smoking on bipolar disorder

Across different methods of MR analyses, consistent evidence was found for a positive effect of smoking initiation on the odds of bipolar disorder ( $OR_{IVW} = 1.46$ , 95% CI 1.28–1.66,  $P = 1.4 \times 10^{-8}$ ) (Table 1, Fig. 1, supplementary Figs 1–3). MR analyses using lifetime smoking as the exposure variable showed significant effects in the same direction, with a similar effect size ( $OR_{IVW} = 1.72$ , 95% CI 1.29–2.28,  $P = 1.8 \times 10^{-4}$ ) (Table 1, supplementary Figs 7–9). The  $I^2_{GX}$  suggested using MR-Egger SIMEX results (Table 1, supplementary Table 1). Tests for heterogeneity suggest evidence for significant horizontal pleiotropy (supplementary Table 2), but MR-Egger intercepts suggest that bias of the estimates by pleiotropy is not likely (supplementary Table 3). To explore whether the genetic variants for lifetime smoking and smoking initiation explained more variance in the exposure than in the outcome, Steiger filtering was applied. For smoking initiation, 20 SNPs dropped out and 342/362 SNPs (94%) could be included in the analyses after Steiger filtering. For lifetime smoking, 12 SNPs dropped out and 107/119 SNPs (90%) could be included following Steiger filtering. The analyses were repeated across methods and similar effects were observed for smoking initiation and lifetime smoking on bipolar disorder (smoking initiation  $OR_{IVW} = 1.44$ , 95% CI 1.29–1.62,  $P = 1.0 \times 10^{-4}$ ; lifetime smoking  $OR_{IVW} = 1.47$ , 95% CI 1.17–1.83,  $P = 7.9 \times 10^{-4}$ ) (supplementary Table 5). Again, MR-Egger was not conducted as  $I^2_{GX}$  values were below 0.9 (supplementary Table 1).

### Summary-level Mendelian randomisation of effect of bipolar disorder on smoking

The MR analyses of the effect of liability to bipolar disorder on risk of smoking initiation ( $\beta_{IVW} = -0.008$ , 95% CI  $-0.026$  to  $0.009$ ,  $P = 0.35$ ), lifetime smoking ( $\beta_{IVW} = -0.001$ , 95% CI  $-0.032$  to  $0.030$ ,  $P = 0.95$ ) and smoking cessation ( $OR_{IVW} = -0.003$ , 95% CI 0.981–1.014,  $P = 0.74$ ) revealed no evidence of a causal effect (Table 1, supplementary Figs 4–6, 10–12, 16–18). MR analyses of the effect of liability to bipolar disorder on smoking heaviness ( $\beta_{IVW} = 0.028$ , 95% CI 0.003–0.053,  $P = 2.9 \times 10^{-2}$ ) showed significant small effects for IVW and MR-RAPS but not weighted median or weighted mode (Table 1, supplementary Figs 13–15). The  $I^2_{GX}$  suggested not using MR-Egger or MR-Egger SIMEX results (supplementary Table 1). The tests for heterogeneity indicated no evidence for significant heterogeneity (supplementary Table 2) and MR-Egger intercepts suggested that bias of the estimates by horizontal pleiotropy is not likely (supplementary Table 3). Steiger filtering indicated that all genetic variants for bipolar disorder explained more variance in bipolar disorder than smoking outcomes. The mean  $F$ -statistic also suggested that results were not subject to weak instrument bias (supplementary Table 4). Although we did not find an effect using multiple genome-wide significant genetic variants, we noted that one SNP (rs3804640) stood out in particular, showing a large positive effect of bipolar disorder on smoking initiation and lifetime smoking in the single SNP analysis (supplementary Figs 5, 11).

This SNP is an intron in the gene *CD47*, which encodes a membrane protein shown to play a role in synaptic plasticity in the hippocampus.<sup>27–29</sup>

## Discussion

The current study suggests that smoking is likely to be a causal risk factor for bipolar disorder by applying MR to two measures of smoking behaviour using GWAS summary statistics. In contrast, no evidence was found that liability to bipolar disorder has a causal effect on smoking initiation, smoking cessation or lifetime smoking. We found some evidence that suggested a small effect of liability for bipolar disorder on increased smoking heaviness. To the best of our knowledge, this is the first study providing robust evidence on the direction of the association between smoking and bipolar disorder.

### Mendelian randomisation of effect of smoking on bipolar disorder

When comparing the current findings to those of a previous study evaluating the relationship between smoking and other severe mental illness,<sup>12</sup> the effect sizes we found are comparable to those testing lifetime smoking and smoking initiation as a risk factor for schizophrenia and major depressive disorder. The evidence for smoking as a risk factor for bipolar disorder has been meager.<sup>7–9</sup> However, one conventional population-based birth cohort study found that maternal smoking was a risk factor for bipolar disorder in offspring.<sup>6</sup> To rule out the effect of maternal smoking as an explanation of our results, future cohorts with measures of maternal and offspring smoking with enough people with bipolar disorder are needed. In line with our findings, a study that used polygenic risk scores of smoking to predict bipolar disorder revealed a significant association but not *vice versa*.<sup>30</sup> Although this is suggestive of a causal effect, the current study adds to the body of evidence by overcoming residual confounding and providing an estimate of the causal effect size. The reported effect sizes of smoking in the current study are similar to those of other environmental risk factors (e.g. neurodevelopment, substances and physical/psychological stress) for developing bipolar disorder found in systematic reviews.<sup>31,32</sup> Of note, those reviews included the following exposures as substance misuse: cocaine, cannabis, opioids, tranquillisers, maternal smoking during pregnancy. We argue that tobacco use needs to be considered for inclusion in this list.

### Mendelian randomisation of effect of bipolar disorder on smoking

Although other studies have found an effect of bipolar disorder on smoking behaviour,<sup>8</sup> the current study did not replicate this finding for most smoking behaviours. The lack of an effect indicates that liability to bipolar disorder is not a risk factor for smoking initiation, cessation or lifetime smoking. From a methodological point of view, one might explain the lack of a clear effect of the liability to bipolar disorder on smoking initiation, cessation and lifetime smoking by using weaker instruments for bipolar disorder as compared with smoking. This would result in reduced statistical power to detect a causal effect. However, we argue that this explanation is unlikely since the effect sizes consistently show values around the null, the confidence intervals were small and the mean  $F$ -statistic, which is a proxy for the strength of the instrumental variable, showed an acceptable value. The results for the effect of liability to bipolar disorder on smoking heaviness suggested from two MR methods a

**Table 1** Bidirectional Mendelian randomisation (MR) analyses of the effects of smoking and bipolar disorder using summary-level data

Exposure	Outcome	SNPs, $n^a$	Method	OR (95% CI) or beta (95% CI)	P-value
Smoking initiation	Bipolar disorder	345	IVW	1.46 (1.28 to 1.66)	$1.4 \times 10^{-8}$
			MR-Egger SIMEX	1.85 (1.14 to 3.00)	$1.3 \times 10^{-2}$
			Weighted median	1.52 (1.30 to 1.76)	$2.2 \times 10^{-8}$
			Weighted mode	2.35 (1.43 to 3.84)	$2.7 \times 10^{-3}$
			MR-RAPS	1.53 (1.34 to 1.75)	$3.0 \times 10^{-10}$
Lifetime Smoking	Bipolar disorder	119	IVW	1.72 (1.29 to 2.28)	$1.8 \times 10^{-4}$
			MR-Egger SIMEX	1.17 (0.38 to 3.55)	0.79
			Weighted median	1.68 (1.20 to 2.35)	$2.5 \times 10^{-4}$
			Weighted mode	1.53 (0.70 to 3.36)	0.29
			MR-RAPS	1.81 (1.35 to 2.41)	$6.0 \times 10^{-5}$
Bipolar disorder	Smoking initiation	20	IVW	-0.008 (-0.026 to 0.009)	0.35
			Weighted median	-0.002 (-0.017 to 0.021)	0.87
			Weighted mode	-0.005 (-0.025 to 0.034)	0.76
			MR-RAPS	-0.004 (-0.022 to 0.013)	0.63
Bipolar disorder	Smoking heaviness	20	IVW	0.028 (0.003 to 0.053)	$2.9 \times 10^{-2}$
			Weighted median	0.016 (-0.013 to 0.044)	0.28
			Weighted mode	-0.010 (-0.074 to 0.054)	0.76
			MR-RAPS	0.027 (0.000 to 0.054)	$4.9 \times 10^{-2}$
Bipolar disorder	Smoking cessation	20	IVW	0.997 (0.981 to 1.014)	0.74
			Weighted median	1.007 (0.0985 to 1.030)	0.55
			Weighted mode	1.013 (0.984 to 1.052)	0.49
			MR-RAPS	1.001 (0.984 to 1.018)	0.92
Bipolar disorder	Lifetime Smoking	19	IVW	-0.001 (-0.022 to 0.020)	0.95
			Weighted median	-0.003 (-0.018 to 0.013)	0.74
			Weighted mode	-0.005 (-0.033 to 0.023)	0.73
			MR-RAPS	-0.007 (-0.026 to 0.013)	0.51

SNP, single nucleotide polymorphism; IVW, inverse-variance weighted; SIMEX, simulation extrapolation method; RAPS, robust adjusted profile score.  
a. The number of SNPs used in each analysis after harmonisation of data-sets removing palindromic SNPs.

significant small effect and from two other methods no significant effect. This could indicate that liability to bipolar disorder increases smoking heaviness or there might be a bias from pleiotropy. Of note, MR typically investigates long-term effects of liability to bipolar disorder on lifetime smoking behaviour and firm conclusions on acute transient effects (e.g. more severe bipolar symptoms increasing the heaviness of smoking) could therefore not be drawn.

### Strengths and limitations

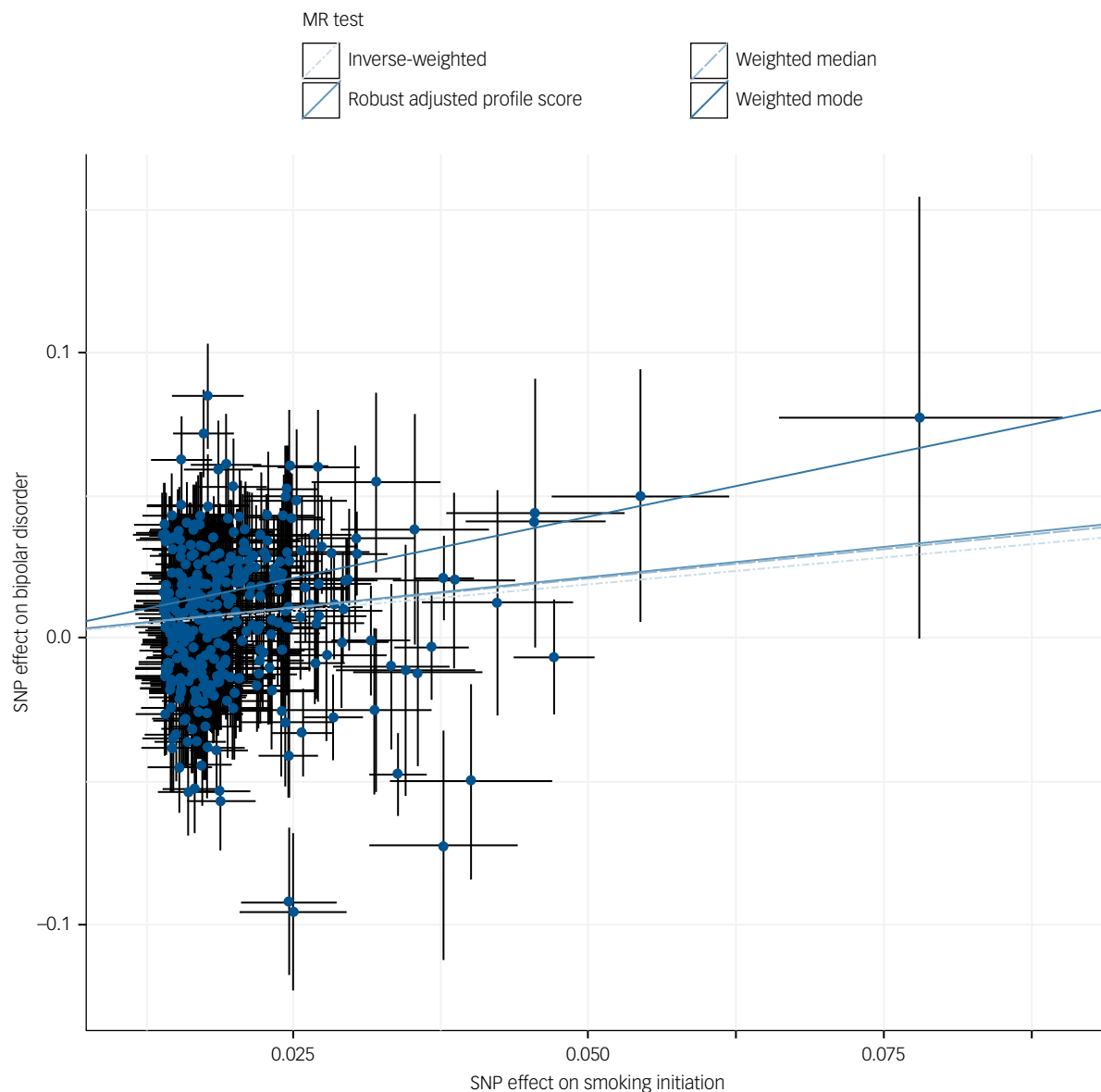
A strength of this study is the substantial power, since we used summary data from recent large GWAS consortia to conduct a summary-level MR.<sup>33</sup> Also, using genetic variants to determine the effects reduces the chance of reverse causation and residual confounding.<sup>34</sup> Furthermore, a consistent effect across different methods increases the confidence in most of our findings.<sup>24</sup> Some limitations should be noted. First, the GWAS were conducted in individuals of European ancestry, which could limit generalisability to other populations. Second, although the smoking instruments capture smoking initiation, duration, heaviness and cessation, the instruments cannot be used to determine effects at specific life stages. The results should be interpreted as cumulative effects of smoking over the life course (potentially from conception and potentially from second-hand smoke from family members). In other words, it is not certain that our findings regarding smoking are confined to a specific period. Third, we assumed that the exclusion-restriction criteria hold since the MR-Egger intercept test for directional horizontal pleiotropy was not significant. Still, pleiotropy could be in place, as regression dilution values suggested that the MR-Egger results might not be trustworthy. The underlying biological process of mental illnesses are relatively poorly understood, which complicates the disentangling of plausible potential pathways. For example, genetic variants that were significantly associated with smoking initiation coded for several biologically plausible pathways, such as acetylcholine nicotinic receptors and

glutamate pathways that affect reward processing and addiction.<sup>10</sup> However, general biological pathways, such as sodium, potassium and calcium voltage-gated channels, were also implied, potentially overlapping with horizontal pleiotropic pathways. Nevertheless, results after Steiger filtering (e.g. testing whether the SNP explains more variance in the exposure or outcome and only selecting those explaining more in the outcome) showed similar effects of smoking on bipolar disorder. Although unlikely, pleiotropic effects could still be in place. Fourth, genetic vulnerability for smoking could also be related to environmental factors that are associated with the outcome, which could lead to spurious causal effects. Nevertheless, the consistent findings across all sensitivity analyses with different assumptions point towards robust findings. Unlike the prospective and longitudinal evidence concerning smoking and psychosis, epidemiological research regarding smoking as a risk factor for bipolar disorder is scarce. Future studies are needed to triangulate the evidence further. Fifth, sensitivity analyses into bipolar subtypes could not be performed because of the low number of associated genetic variants. Future GWAS with larger samples are required to potentially overcome this problem. Lastly, the bipolar disorder GWAS has a relatively low number of associated loci and a smaller sample compared with the smoking GWAS. Future GWASs with larger samples of people with bipolar disorder could yield a higher number of associated SNPs. An increase in the percentage of explained variance could alter MR results.

### Possible mechanisms

There are several, non-mutually exclusive, plausible explanations for causal pathways from smoking to bipolar disorder.<sup>7-9</sup> First, nicotine binds to subtypes of the nicotinic acetylcholinergic receptor, which is implicated in the regulation of central nervous system pathways relevant to mood disorders.<sup>35</sup> Although the quality of the evidence is low, several case studies have related the use of a partial nicotine receptor agonist (varenicline) to induced mania or new onset of bipolar disorder.<sup>36-41</sup> Second, nicotine





**Fig. 1** Scatter plot of inverse-variance weighted and Mendelian randomisation (MR) Egger analyses of the effect of smoking initiation on bipolar disorder.


SNP, single nucleotide polymorphism.

exposure leads to desensitisation of the nicotine acetylcholinergic receptor by phosphorylation of subunits.<sup>42</sup> These dysmorphic receptors then have reduced binding capacity for endogenous acetylcholine: craving on drug withdrawal is clear evidence of changed function in reward pathways. The reduced functioning of these receptors could have an effect on neurotransmitter levels and subsequently lead to a higher vulnerability to develop bipolar disorder, although evidence about this topic is lacking. Third, burning tobacco releases toxic compounds that induce inflammation and oxidative stress, which may be associated with bipolar disorder.<sup>35</sup>

### Clinical implications

Many hypotheses exist to explain the high prevalence of smoking in severe mental illness.<sup>43</sup> The lack of a consistent bidirectional effect and the causal evidence that smoking initiation liability increases the risk for bipolar disorder point toward the two-hit or diathesis–stress model.<sup>44</sup> This implies a neurobiological vulnerability

for severe mental illness<sup>45</sup> interacting with an environmental stressor, such as smoking, leading to an increased vulnerability for severe mental illness.<sup>44</sup> Several studies have shown that smoking in adolescents and adults with bipolar disorder is associated with earlier age at onset of mood disorder, greater severity of symptoms,<sup>46–51</sup> poorer functioning, comorbid substance misuse,<sup>52</sup> suicide attempts<sup>53</sup> and other adverse outcomes, such as readmission to hospital.<sup>54</sup> Our results underline the importance of strategies to prevent adolescents from starting smoking and to treat smoking in people with bipolar disorder. The frequently mentioned reason for smoking by people with bipolar disorder is stress-coping behaviour<sup>55</sup> and a tailored prevention strategy might be helpful in learning healthy coping strategies. Regardless of the mechanism that may eventually be confirmed, our findings underline the importance of prevention and treatment programmes to reduce smoking and its consequences. Investing in a smoke-free future could reduce mental health problems in future generations.

**Jentien M. Vermeulen** , MD, Medical Doctor, Department of Psychiatry, Amsterdam UMC, University of Amsterdam, The Netherlands; **Robyn E. Wootton**, PhD, Post-doc Researcher, School of Psychological Science, University of Bristol; MRC Integrative Epidemiology Unit, University of Bristol; and NIHR Biomedical Research Centre, University Hospitals Bristol NHS Foundation Trust and the University of Bristol, UK; **Jorien L. Treur**, PhD, Post-doc Researcher, Department of Psychiatry, Amsterdam UMC, University of Amsterdam, The Netherlands; **Hannah M. Sallis**, PhD, Post-doc Researcher, School of Psychological Science, University of Bristol; and MRC Integrative Epidemiology Unit, University of Bristol, UK; **Hannah J. Jones**, PhD, Post-doc Researcher, Department of Population Health Sciences, Bristol Medical School, University of Bristol; and MRC Integrative Epidemiology Unit, University of Bristol, UK; **Stanley Zammit**, MD, PhD, Professor of Psychiatric Epidemiology, Department of Population Health Sciences, Bristol Medical School, University of Bristol, UK; and MRC Centre for Neuropsychiatric Genetics and Genomics, Division of Psychological Medicine and Clinical Neurosciences, University of Cardiff, UK; **Wim van den Brink**, MD, PhD, Emeritus Professor of Addiction, Department of Psychiatry, Amsterdam UMC, University of Amsterdam, The Netherlands; **Guy M. Goodwin**, MD, PhD, Professor of Psychiatry, Department of Psychiatry, University of Oxford; and Oxford Health NHS Foundation Trust, Oxford, UK; **Lieuwe de Haan**, MD, PhD, Professor of Psychotic Disorders, Department of Psychiatry, Amsterdam UMC, University of Amsterdam, The Netherlands; **Marcus R. Munafo**, MD, Professor of Biological Psychology, School of Psychological Science, University of Bristol, Bristol; MRC Integrative Epidemiology Unit, University of Bristol; and UK Centre for Tobacco and Alcohol Studies, University of Bristol, UK

**Correspondence:** Jentien Vermeulen, Amsterdam UMC, Meibergdreef 9, 1105 AZ, Amsterdam, The Netherlands. Email: [j.m.vermeulen@amsterdamumc.nl](mailto:j.m.vermeulen@amsterdamumc.nl)

First received 29 Jan 2019, final revision 9 Aug 2019, accepted 14 Aug 2019

## Funding

R.E.W. is a member of the MRC Integrative Epidemiology Unit at the University of Bristol funded by the Medical Research Council (MC\_UU\_000117). This study was supported by the National Institute for Health Research (NIHR) Biomedical Research Centre at the University Hospitals Bristol NHS Foundation Trust and the University of Bristol. The views expressed are those of the authors and not necessarily those of the National Health Service, the NIHR or the Department of Health.

## Supplementary material

Supplementary material is available online at <http://doi.org/10.1192/bjp.2019.202>.

## References

- Dickerson F, Schroeder J, Katsafanas E, Khushalani S, Origoni AE, Savage C, et al. Cigarette smoking by patients with serious mental illness, 1999–2016: an increasing disparity. *Psychiatr Serv* 2018; **69**: 147–53.
- Jackson JG, Diaz FJ, Lopez L, Leon J. A combined analysis of worldwide studies demonstrates an association between bipolar disorder and tobacco smoking behaviors in adults. *Bipolar Disord* 2015; **17**: 575–97.
- Ickick R, Gard S, Barde M, Carminati M, Desage A, Guillaume S, et al. Physical and mental health burden in cases of bipolar disorder classified as current, former, or non-tobacco smokers. *J Affect Disord* 2017; **208**: 406–13.
- Depp CA, Bowie CR, Mausbach BT, Wolyniec P, Thornquist MH, Luke JR, et al. Current smoking is associated with worse cognitive and adaptive functioning in serious mental illness. *Acta Psychiatr Scand* 2015; **131**: 333–41.
- MacCabe JH. It is time to start taking tobacco seriously as a risk factor for psychosis: self-medication cannot explain the association. *Acta Psychiatr Scand* 2018; **138**: 3–4.
- Talati A, Bao Y, Kaufman J, Shen L, Schaefer CA, Brown AS. Maternal smoking during pregnancy and bipolar disorder in offspring. *Am J Psychiatry* 2013; **170**: 1178–85.
- Thomson D, Berk M, Dodd S, Rapado-Castro M, Quirk SE, Ellegaard PK, et al. Tobacco use in bipolar disorder. *Clin Psychopharmacol Neurosci* 2015; **13**: 1–11.
- Heffner JL, Strawn JR, DelBello MP, Strakowski SM, Anthenelli RM. The co-occurrence of cigarette smoking and bipolar disorder: phenomenology and treatment considerations. *Bipolar Disord* 2011; **13**: 439–53.
- Slyepchenko A, Brunoni AR, McIntyre RS, Quevedo J, Carvalho AF. The adverse effects of smoking on health outcomes in bipolar disorder: a review and synthesis of biological mechanisms. *Curr Mol Med* 2016; **16**: 187–205.
- Liu M, Jiang Y, Wedow R, Li Y, Brazel DM, Chen F, et al. Association studies of up to 1.2 million individuals yield new insights into the genetic etiology of tobacco and alcohol use. *Nat Genet* 2019; **51**: 237–44.
- Ruderfer DM, Ripke S, McQuillin A, Boocock J, Stahl EA, Pavlidis JMW, et al. Genomic dissection of bipolar disorder and schizophrenia, including 28 sub-phenotypes. *Cell* 2018; **173**: 1705–15.e16.
- Wootton RE, Richmond RC, Stuijffand BG, Lawn RB, Sallis HM, Taylor GMJ, et al. Causal effects of lifetime smoking on risk for depression and schizophrenia: evidence from a Mendelian randomisation study. *bioRxiv* 2018; 381301: doi <https://doi.org/10.1101/381301>.
- Aad G, Abbott B, Abdallah J, Abidinov O, Aben R, Abolins M, et al. Search for dark matter in events with missing transverse momentum and a Higgs Boson decaying to two photons in pp Collisions at sqrt[s]=8 TeV with the ATLAS detector. *Phys Rev Lett* 2015; **115**(13): 131801.
- Davey Smith G, Hemani G. Mendelian randomization: genetic anchors for causal inference in epidemiological studies. *Hum Mol Genet* 2014; **23**(R1): R89–98.
- Stahl EA, Breen G, Forstner AJ, McQuillin A, Ripke S, Trubetskov V, et al. Genome-wide association study identifies 30 loci associated with bipolar disorder. *Nat Genet* 2019; **51**: 793–803.
- Hemani G, Zheng J, Elsworth B, Wade KH, Haberland V, Baird D, et al. The MR-Base platform supports systematic causal inference across the human phenotype. *eLife* 2018; **7**: e34408.
- R Core Team. *R: A Language and Environment for Statistical Computing*. R Foundation for Statistical Computing, 2016.
- Davies NM, Holmes MV, Davey Smith G. Reading Mendelian randomisation studies: a guide, glossary, and checklist for clinicians. *BMJ* 2018; **362**: k601.
- Bowden J, Smith GD, Burgess S. Mendelian randomization with invalid instruments: effect estimation and bias detection through Egger regression. *Int J Epidemiol* 2015; **44**: 512–25.
- Bowden J, Del Greco MF, Minelli C, Smith GD, Sheehan NA, Thompson JR. Assessing the suitability of summary data for two-sample Mendelian randomization analyses using MR-Egger regression: the role of the I-2 statistic. *Int J Epidemiol* 2016; **45**: 1961–74.
- Bowden J, Smith GD, Haycock PC, Burgess S. Consistent estimation in Mendelian randomization with some invalid instruments using a weighted median estimator. *Genet Epidemiol* 2016; **40**: 304–14.
- Hartwig FP, Smith GD, Bowden J. Robust inference in summary data Mendelian randomization via the zero modal pleiotropy assumption. *Int J Epidemiol* 2017; **46**: 1985–98.
- Zhao Q, Jingshu W, Gibran H, Jack B, Small DS. *Statistical Inference in Two-Sample Summary-Data Mendelian Randomization Using Robust Adjusted Profile Score*. 2018 ([http://www-stat.wharton.upenn.edu/~qzhaop/papers/mr\\_raps.pdf](http://www-stat.wharton.upenn.edu/~qzhaop/papers/mr_raps.pdf)).
- Lawlor DA, Tilling K, Davey Smith G. Triangulation in aetiological epidemiology. *Int J Epidemiol* 2016; **45**: 1866–86.
- Staiger D, Stock JH. Instrumental variables regression with weak instruments. *Econometrica* 1997; **65**: 557–86.
- Hemani G, Tilling K, Davey Smith G. Orienting the causal relationship between imprecisely measured traits using GWAS summary data. *PLoS Genet* 2017; **13**(11): e1007081.
- Lindberg FP, Gresham HD, Schwarz E, Brown EJ. Molecular cloning of integrin-associated protein: an immunoglobulin family member with multiple membrane-spanning domains implicated in alpha v beta 3-dependent ligand binding. *J Cell Biol* 1993; **123**: 485–96.
- Latour S, Tanaka H, Demeure C, Mateo V, Rubio M, Brown EJ, et al. Bidirectional negative regulation of human T and dendritic cells by CD47 and its cognate receptor signal-regulator protein-alpha: down-regulation of IL-12 responsiveness and inhibition of dendritic cell activation. *J Immunol* 2001; **167**: 2547–54.
- Piccio L, Vermi W, Boles KS, Fuchs A, Strader CA, Facchetti F, et al. Adhesion of human T cells to antigen-presenting cells through SIRP beta 2-CD47 interaction costimulates T-cell proliferation. *Blood* 2005; **105**: 2421–7.
- Reginsson GW, Ingason A, Euesden J, Bjornsdottir G, Olafsson S, Sigurdsson E, et al. Polygenic risk scores for schizophrenia and bipolar disorder associate with addiction. *Addict Biol* 2018; **23**: 485–92.
- Marangoni C, Hernandez M, Faedda GL. The role of environmental exposures as risk factors for bipolar disorder: a systematic review of longitudinal studies. *J Affect Disord* 2016; **193**: 165–74.
- Bortolato B, Köhler CA, Evangelou E, León-Caballero J, Solmi M, Stubbs B, et al. Systematic assessment of environmental risk factors for bipolar disorder: an umbrella review of systematic reviews and meta-analyses. *Bipolar Disord* 2017; **19**: 84–96.
- Burgess S, Scott RA, Timpson NJ, Smith GD, Thompson SG, Consortium E-I. Using published data in Mendelian randomization: a blueprint for efficient identification of causal risk factors. *Eur J Epidemiol* 2015; **30**: 543–52.
- Lawlor DA, Harbord RM, Sterne JAC, Timpson N, Smith GD. Mendelian randomization: using genes as instruments for making causal inferences in epidemiology. *Stat Med* 2008; **27**: 1133–63.
- Berk M, Kapczynski F, Andreazza AC, Dean OM, Giorlando F, Maes M, et al. Pathways underlying neuroprogression in bipolar disorder: focus on inflammation, oxidative stress and neurotrophic factors. *Neurosci Biobehav Rev* 2011; **35**: 804–17.

- 36 Knibbs N, Tsoi DT. Varenicline induces manic relapse in bipolar disorder. *Gen Hosp Psychiatry* 2011; **33**: 641e1–2.
- 37 Francois D, Odom A, Kotbi N. A case of late-life onset mania during Varenicline assisted smoking cessation. *Int J Geriatr Psychiatry* 2011; **26**: 658–9.
- 38 Hussain S, Kayne E, Guwanardane N, Petrides G. Varenicline induced mania in a 51 year old patient without history of bipolar illness. *Prog Neuropsychopharmacol Biol Psychiatry* 2011; **35**: 1162–3.
- 39 MacSuibhne S, Giwa TA, McCauley MD. Varenicline (Champix)-associated manic relapse in bipolar affective disorder. *Ir Med J* 2010; **103**(9): 286.
- 40 Morstad AE, Kutscher EC, Kennedy WK, Carnahan RM. Hypomania with agitation associated with varenicline use in bipolar II disorder. *Ann Pharmacother* 2008; **42**: 288–9.
- 41 Kohen I, Kremen N. Varenicline-induced manic episode in a patient with bipolar disorder. *Am J Psychiatry* 2007; **164**: 1269–70.
- 42 Mineur YS, Picciotto MR. Biological basis for the co-morbidity between smoking and mood disorders. *J Dual Diagn* 2009; **5**: 122–30.
- 43 Khokhar JY, Dwiell LL, Henricks AM, Doucette WT, Green AI. The link between schizophrenia and substance use disorder: a unifying hypothesis. *Schizophr Res* 2018; **194**: 78–85.
- 44 Fowles DC. Schizophrenia – diathesis-stress revisited. *Annu Rev Psychol* 1992; **43**: 303–36.
- 45 Lippard ETC, Mazure CM, Johnston JAY, Spencer L, Weathers J, Pittman B, et al. Brain circuitry associated with the development of substance use in bipolar disorder and preliminary evidence for sexual dimorphism in adolescents. *J Neurosci Res* 2017; **95**: 777–91.
- 46 Heffner JL, Anthenelli RM, Adler CM, Strakowski SM, Beavers J, DelBello MP. Prevalence and correlates of heavy smoking and nicotine dependence in adolescents with bipolar and cannabis use disorders. *Psychiatry Res* 2013; **210**: 857–62.
- 47 Berk M, Ng F, Wang WV, Tohen M, Lubman DI, Vieta E, et al. Going up in smoke: tobacco smoking is associated with worse treatment outcomes in mania. *J Affect Disord* 2008; **110**: 126–34.
- 48 Ostacher MJ, Nierenberg AA, Perlis RH, Eidelman P, Borrelli DJ, Tran TB, et al. The relationship between smoking and suicidal behavior, comorbidity, and course of illness in bipolar disorder. *J Clin Psychiatry* 2006; **67**: 1907–11.
- 49 Ta-Chuan Y, Sheng-Chiang W, Yu-Tien C, Chin-Bin Y. Predictors of nicotine dependence in adolescents: symptoms of bipolar disorder and attention-deficit/hyperactivity disorder. *J Child Adolesc Psychopharmacol* 2017; **27**: 366–73.
- 50 ter Meulen WG, van Zaane J, Draisma S, Beekman ATF, Kupka RW. Does the number of previous mood episodes moderate the relationship between alcohol use, smoking and mood in bipolar outpatients? *BMC Psychiatry* 2017; **17**(1): 185.
- 51 Medeiros GC, Lafer B, Kapczinski F, Miranda-Scippa A, Almeida KM. Bipolar disorder and tobacco smoking: categorical and dimensional clinical correlates in subjects from the Brazilian bipolar research network. *Compr Psychiatry* 2018; **82**: 14–21.
- 52 Wilens TE, Biederman J, Martelon M, Zulauf C, Anderson JP, Carrellas NW, et al. Further evidence for smoking and substance use disorders in youth with bipolar disorder and comorbid conduct disorder. *J Clin Psychiatry* 2016; **77**: 1420–7.
- 53 Ducasse D, Jaussent I, Guillaume S, Azorin JM, Bellivier F, Belzeaux R, et al. Increased risk of suicide attempt in bipolar patients with severe tobacco dependence. *J Affect Disord* 2015; **183**: 113–8.
- 54 O'Hagan M, Cornelius V, Young AH, Taylor D. Predictors of rehospitalization in a naturalistic cohort of patients with bipolar affective disorder. *Int Clin Psychopharmacol* 2017; **32**: 115–20.
- 55 Moon E, Chang JS, Choi S, Ha TH, Cha B, Cho HS, et al. Characteristics of stress-coping behaviors in patients with bipolar disorders. *Psychiatry Res* 2014; **218**: 69–74.



## psychiatry in literature

### Epidemics: dancing manias (reassuringly rare in Great Britain)

Greg Wilkinson

Dancing manias of medico-politico-religio-sociocultural origin broke out from the 7th to the 17th century in Europe, notably Strasbourg (1518):

'Amidst our people here is come  
The madness of the dance.  
In every town there now are some  
Who fall upon a trance.  
It drives them ever night and day,  
They scarcely stop for breath,  
Till some have dropped along the way  
And some are met by death.' (Straussburgh Chronicle of Kleinkawel, 1625)

Here, in more recent times, anonymously *The Inquirer* (*Edinburgh Medical and Surgical Journal*, 1807; **3**(12): 434–47) reports 'some convulsive diseases':

The first of these that I shall notice, is peculiar to a part of Forfarshire, and is called by the people of that district the *Leaping Ague*, and incorrectly by some medical men St Vitus's Dance. [...] Those affected with it first complain of a pain in the head, or lower part of the back, to which succeed convulsive fits, or fits of dancing, at certain periods. During the paroxysm, they have all the appearance of madness, distorting their bodies in various ways, and leaping and springing in a surprising manner, whence the disease has derived its vulgar name. Sometimes they run with astonishing velocity, and often over dangerous passes, to some place out of doors, which they have fixed on in their own minds, or, perhaps, even mentioned to those in company with them, and then drop down quite exhausted. At other times, especially when confined to the house, they climb in the most singular manner. In cottages, for example, they leap from the floor to what is called the baulks, or those beams by which the rafters are joined together, springing from one to another, with the agility of a cat, or whirling round one of them, with a motion resembling the fly of a jack. Cold bathing is found to be the most effectual remedy; but when the fit of dancing, leaping, or running comes on, nothing tends so much to abate the violence of the disease, as allowing them free scope to exercise themselves, till nature be exhausted. No mention is made of its being peculiar to any age, sex, or condition of life, although I am informed, by a gentleman from Brechin, that it is most common before puberty. In some families it seems to be hereditary; and I have heard of one, in which a horse was always kept ready saddled, to follow the young ladies belonging to it, when they were seized with a fit of running. It is said, that the clattering of tongs, or any similar noise, will bring on a fit. By some, it is considered entirely as a nervous affection, and by others, as the effect of worms. In various instances, the latter opinion has been confirmed by facts. It was first observed in the parish of Menmuir, and has prevailed occasionally in that and the neighbouring parishes, for about seventy years; but is not now nearly so frequent as it was about thirty years ago.'

© The Author(s), 2021. Published by Cambridge University Press on behalf of the Royal College of Psychiatrists

The British Journal of Psychiatry (2021)  
218, 94. doi: 10.1192/bjp.2020.205