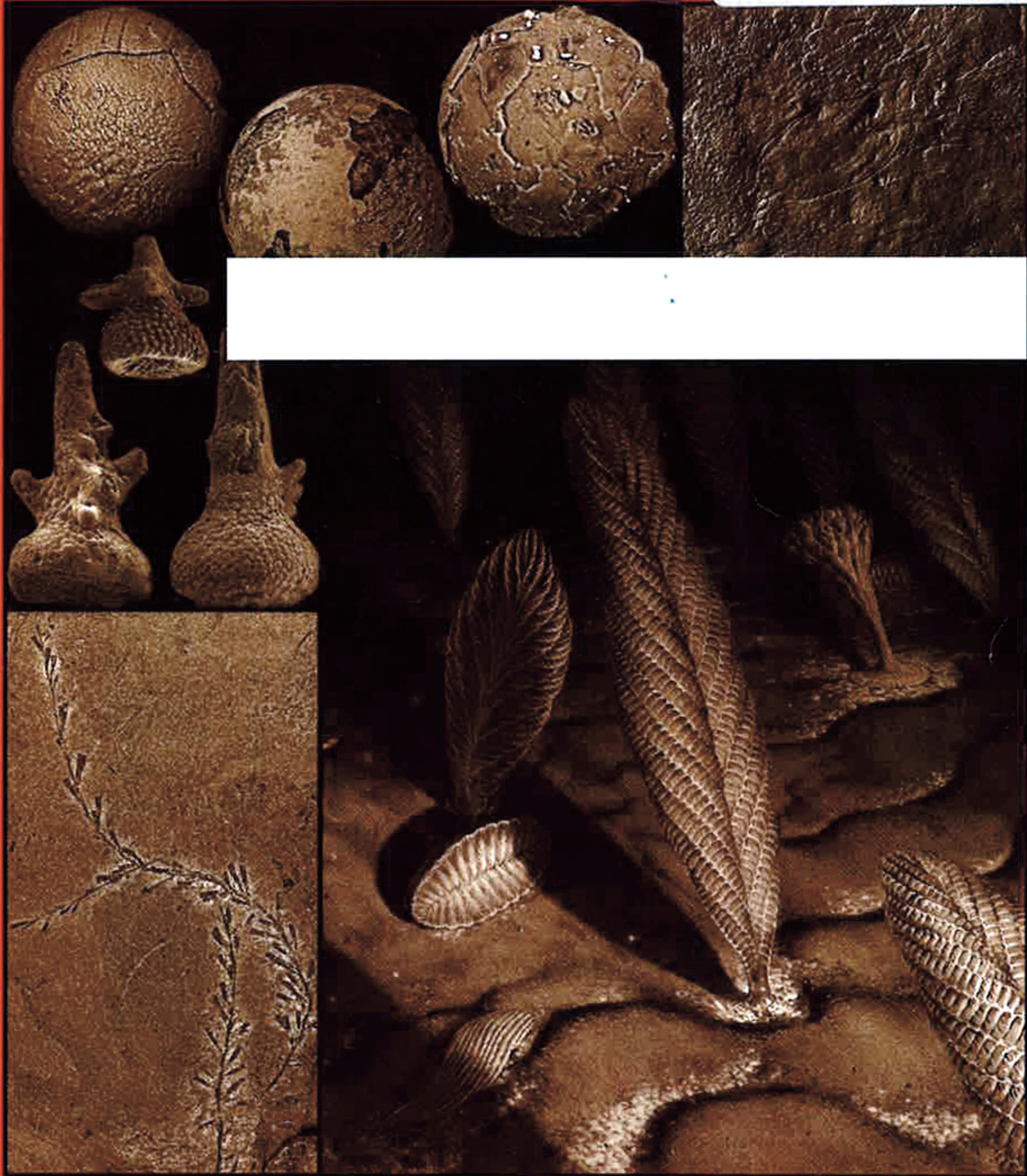




JOURNAL OF PALEONTOLOGY



PALEONTOLOGY

VOL 88 ■ NO 2 ■ MARCH 2014 ■ THE PALEONTOLOGICAL SOCIETY



OFFICERS AND EDITORS OF THE PALEONTOLOGICAL SOCIETY



President

SANDRA J. CARLSON, Geology Department
Univ. California–Davis
One Shields Avenue
Davis, CA 95616-8605
sjcarlson@ucdavis.edu

President-Elect

STEVE HOLLAND, Department of Geology
University of Georgia
210 Field Street
Athens, GA 30602-2501
stratum@uga.edu

Past President

PHILIP D. GINGERICH, Museum of Paleontology
The University of Michigan
Ann Arbor, MI 48109-1079
gingeric@umich.edu

Secretary

MARK A. WILSON
Department of Geology
The College of Wooster
Wooster, OH 44691
mwilson@wooster.edu

Treasurer

PETER J. HARRIES
Department of Geology
University of South Florida
4202 East Fowler Avenue
Tampa, FL 33620
harries@chuma.cas.usf.edu

JP Editors

BRIAN R. PRATT, Univ. Saskatchewan
brian.pratt@usask.ca

STEVEN J. HAGEMAN, Appalachian State Univ.
hagemansj@appstate.edu

JP Managing Editor

KATHLEEN HUBER, Vienna, VA
jpaleo@si.edu

JP Associate Editors

JUAN LUIS BENEDETTO, CICTERRA
jbenedetto@efn.uncor.edu

STYLIANOS CHATZIMANOLIS,
Univ. Tennessee–Chattanooga
stylianos-chatzimanolis@utc.edu

TOM CRONIN, USGS
tcronin@usgs.gov

WILLIAM A. DIMICHELE, Smithsonian Institution
dimichel@si.edu

ROBERT J. ELIAS, Univ. of Manitoba
eliasrj@Ms.Umanitoba.CA

NADIA FRÖBISCH, Museum für Naturkunde
nadiafroebisch@mfn-berlin.de

FOREST J. GAHN, Brigham Young Univ., Idaho
gahnf@byui.edu

JOSEPH HANNIBAL, Cleveland Museum of
Natural History
jhannibal@cmnh.org

PETER J. HARRIES, Univ. of South Florida
harries@chuma.cas.usf.edu

JOACHIM HAUG, Univ. of Greifswald
joachim.haug@palaeo-evo-devo.info

MICHAEL HAUTMANN, Univ. of Zurich
michael.hautmann@pim.uzh.ch

MARTIN J. HEAD, Brock Univ.
mjhead@brocku.ca

BRIAN T. HUBER, Smithsonian Institution
huberb@si.edu

NIGEL HUGHES, UC Riverside
nigel.hughes@ucr.edu

ZERINA JOHANSON, Natural History Museum, London
z.johanson@nhm.ac.uk

DANIEL KSEPKA, NC State Univ.
daniel_ksepka@ncsu.edu

STEPHEN A. LESLIE, James Madison Univ.
lesliesa@jmu.edu

BRUCE LIEBERMAN, Univ. of Kansas
blieber@ku.edu

RICK LUPIA, OK Museum
rlupia@ou.edu

GABRIELA MÁNGANO, Univ. Saskatchewan
gabriela.mangano@usask.ca

MALGORZATA MOCZYDLOWSKA-VIDAL, Uppsala Univ.
malgo.vidal@pal.uu.se

ERIC SCOTT, San Bernardino Co. Museum
escott@sbc.sbcounty.gov

MARY SILCOX, Univ. of Toronto Scarborough
msilcox@utscc.utoronto.ca

HANS-DIETER SUES, Smithsonian Institution
suesh@si.edu

COLIN SUMRALL, Univ. of Tennessee
csumrall@utk.edu

LEIF TAPANILA, Idaho State Univ.
tapaleif@isu.edu

DAVID VARRICCHIO, Montana State Univ.
djv@montana.edu

PETER WAGNER, Smithsonian Institution
wagnerpj@si.edu

STEVE WESTROP, OK Museum
swestrop@ou.edu

DAVID M. WORK, Maine State Museum
david.work@maine.gov

MARGARET M. YACOBUCCI, Bowling Green State Univ.
mmyacob@bgsu.edu

Paleobiology Co-Editors

BRUCE MACFADDEN, DOUGLAS JONES, JOHNATHAN
BLOCH, and MICHAEL KOWALEWSKI, Univ. of Florida

Editor of Special Publications

SARA MARCUS, Oregon Inst. of Technology
sara.marcus@oit.edu

Communications Officer

LIEF TAPANILA, Idaho State Univ.
tapleif@isu.edu

Program Coordinator

THOMAS OLSZEWSKI, Texas A&M Univ.
tomo@geo.tamu.edu

Education Coordinator

MARGARET M. YACOBUCCI, Bowling Green State Univ.
mmyacob@bgsu.edu

Councilors

PETER WILE, Penn. State Univ.
pwilf@psu.edu

MARGRET FRAISER, Univ. of Wisconsin, Milwaukee
mfraiser@uwm.edu

Student Representative

EMMA LOCATELLI, Yale Univ.
emma.locatelli@yale.edu

Section Chairs

Cordilleran: NICOLE BONUSCO
CA State Univ.–Fullerton
nbonuso@fullerton.edu

North Central: REBECCA FREEMAN
Univ. of Kentucky
rebecca.freeman@uky.edu

Northeastern: ALEXANDER J. BARTHOLOMEW
SUNY–New Paltz
barthola@newpaltz.edu

Rocky Mountain: LEIF TAPANILA
Idaho State Univ.
tapaleif@isu.edu

South-Central: BEN WAGGONER
Univ. Central Arkansas
benw@mail.uca.edu

Southeastern: GWEN DALEY
Winthrop Univ.
daleyg@winthrop.edu

Cover illustration (clockwise from lower left): Cambrian *Mastigograptus* sp. specimen, Utah, USA (LoDuca and Kramer); three Cambrian small shelly *Acidocharacus longiconus* specimens, Shaanxi Province, China (Moore et al.); three Cambrian possible animal embryos, Hubei Province, China (Broce et al.); Ediacaran *Kimberichnus teruzzii* excavation trace with associated *Kimberella* resting trace and nearby *Dickinsonia costata*, Ediacara Member, south of Brachina Gorge, Australia (Gehling et al.); reconstruction of Ediacaran deep-water ecosystem represented by fossils of the Mackenzie Mountains, northwestern Canada (Peter Trusler illustration; Narbonne et al.).

The JOURNAL OF PALEONTOLOGY (ISSN 0022-3360) is published bimonthly by The Paleontological Society, 3300 Penrose Pl, Boulder, CO 80301, USA. Periodical postage paid at Boulder, CO and at additional mailing offices. Postmaster: Send address changes to JOURNAL OF PALEONTOLOGY Subscriptions Office, PO Box 1897, 810 E 10th St, Lawrence, KS 66044-8897, USA. Membership in The Paleontological Society, including electronic subscriptions to the *Journal of Paleontology* and *Paleobiology*, costs \$55 per year. For print subscriptions and other options, please see membership application, available at <http://www.paleosoc.org/>. JP Institutional Subscription price is \$330 per year. For information on prices of back issues of the JOURNAL, please contact: SEPM Business Office, 1731 E 71st St, Tulsa, OK 74136-5108 for volumes 1 (1927) through 59 (1985) or The Paleontological Society Business Office, PO Box 1897, 810 E 10th St, Lawrence, KS 66044-8897 for volumes 60 (1986) and following.

Communication about the JOURNAL, notices, subscriptions, rates, changes of address, and nonreceipt of preceding numbers should be addressed to: JOURNAL OF PALEONTOLOGY Subscriptions Office, PO Box 1897, 810 E 10th St, Lawrence, KS 66044-8897, USA fax: (785)843-1274, jps@allenpress.com. Claims for nonreceipt of preceding numbers must be submitted within three months (six months if foreign) of the date of publication in order to be filled gratis. Communication about membership and requests for blanks for nomination of new members in The Paleontological Society should be directed to the Secretary, Mark A. Wilson, address above.

Submit manuscripts online at <http://journalofpaleontology.allentrack.net>.

The JOURNAL OF PALEONTOLOGY is printed offset by Allen Press, Inc., Lawrence, KS 66044.

Copyright © 2014 The Paleontological Society
ALLEN PRESS, INC., LAWRENCE, KS

Visit The Paleontological Society website at paleosoc.org

COPYRIGHT STATEMENT

The appearance of the code at the top of the first page of an article in this journal indicates the copyright owner's consent that copies of the article may be made for personal or internal use, or for the personal and internal use of specific clients. This consent is given on the condition, however, that the copier pay the stated per-copy fee through the Copyright Clearance Center, Inc., PO Box 765, Schenectady, NY 12301 for copying beyond that permitted by Sections 107 or 108 of the U.S. Copyright Law. This consent does not extend to other kinds of copying, such as copying for general distribution, for advertising or promotional purposes, for creating new collective works, or for resale.

Ⓜ This paper meets the requirements of ANSI/NISO Z39.48-1992 (Permanence of Paper).