

Frontal slow-wave activity as a predictor of negative symptoms, cognition and functional capacity in schizophrenia

Yu-Han Chen, Breannan Stone-Howell, J. Christopher Edgar, Mingxiong Huang, Cassandra Wootton, Michael A. Hunter, Brett Y. Lu, Joseph R. Sadek, Gregory A. Miller and José M. Cañive

Background

Increased temporal and frontal slow-wave delta (1–4 Hz) and theta (4–7 Hz) activities are the most consistent resting-state neural abnormalities reported in schizophrenia. The frontal lobe is associated with negative symptoms and cognitive abilities such as attention, with negative symptoms and impaired attention associated with poor functional capacity.

Aims

To establish whether frontal dysfunction, as indexed by slowing, would be associated with functional impairments.

Method

Eyes-closed magnetoencephalography data were collected in 41 participants with schizophrenia and 37 healthy controls, and frequency-domain source imaging localised delta and theta activity.

Results

Elevated delta and theta activity in right frontal and right temporoparietal regions was observed in the schizophrenia *v.* control group. In schizophrenia, right-frontal delta activity was uniquely associated with negative but not positive symptoms. In the full sample, increased right-frontal delta activity predicted poorer attention and functional capacity.

Conclusions

Our findings suggest that treatment-associated decreases in slow-wave activity could be accompanied by improved functional outcome and thus better prognosis.

Declaration of interest

None.

Copyright and usage

© The Royal College of Psychiatrists 2016.

Abnormal brain oscillations, observed via electroencephalography (EEG) and magnetoencephalography (MEG) are commonly reported in schizophrenia.^{1–6} Resting-state oscillatory findings have been inconsistent, likely because of the heterogeneity intrinsic to schizophrenia (such as age, symptoms, medications) as well as methodological issues (for example analysis procedures, EEG *v.* MEG). Most studies, however, observe more delta (1–4 Hz) and theta (4–7 Hz) resting-state activity in people with schizophrenia than in controls,^{2,5,7–12} with two recent meta-analyses concluding that enhanced low-frequency activity in schizophrenia is a robust finding.¹³ Although delta and theta oscillatory activity is common in stage 3 and 4 of slow-wave sleep,^{14–16} such activity during awake states is pathological, associated with traumatic brain injury,¹⁷ Alzheimer's disease¹⁸ and brain lesions.¹⁹ Given increased slow-wave activity during the waking state in schizophrenia and given that individuals with schizophrenia typically do not show frank pathology on structural magnetic resonance imaging (MRI), it has been suggested that part of the brain in schizophrenia might be in an inactive 'sleep-like state'^{15,20} or that slow-wave activity in schizophrenia reflects subtle brain pathology.

There appears to be some specificity for slow-wave abnormalities in schizophrenia. Slow-wave abnormalities are observed in unmedicated individuals with schizophrenia.¹³ Sponheim *et al*¹¹ found slow-wave abnormalities in both first episode schizophrenia as well as in individuals with chronic schizophrenia, suggesting that slow-wave abnormalities are stable characteristics of schizophrenia and not associated with treatment. Examining slowing in different psychiatric groups, Rockstroh *et al*²¹ reported that the spatial topography of slow-wave activity distinguishes individuals with schizophrenia from individuals with neurotic/affective diagnoses. Narayanan *et al*⁶ also reported that individuals with schizophrenia and their first-degree relatives showed augmented

resting-state delta activity, whereas individuals with bipolar disorder and their first-degree relatives showed augmented fast alpha activity. Finally, Venables *et al*²² examined resting-state EEG activity in people with schizophrenia, bipolar disorder and their first-degree relatives. The authors found that abnormal low-frequency EEG resting activity was specific to people with schizophrenia and their relatives, as well as showing that abnormal slow-wave activity is associated with the Val158Met polymorphism of the *COMT* gene. Although abnormal slow-wave activity is frequently reported in EEG studies of schizophrenia,¹⁶ the reported source location or scalp distribution of slow-wave abnormalities in schizophrenia varies, with EEG studies reporting abnormal slowing in schizophrenia over posterior, frontal-midline and frontal-temporal regions.^{14,18,23,24} Inconsistency across EEG studies may be a result of variability in participants in the location of slow-wave pathology or because the scalp distribution of EEG power can be ambiguous.⁹ In particular, the conductivity of the skull creates a smearing effect such that the brain signals picked up by the electrodes are not necessarily from nearby generators. It may also be because both distributed and focal slow-wave activity contributes to EEG sensor activity and that, as a result, the location of the EEG reference electrode is an important factor in interpreting slow-wave scalp activity.

MEG offers a reference-free method for assessing electro-magnetic slow-wave activity that is not distorted by changes in conductivity across brain tissues.²⁵ MEG has identified cortical generators of slow-wave activity in schizophrenia using single-dipole source localisation.^{2,7,8,12,13,18,21,24,26–29} To our knowledge, only one MEG study has examined slow-wave activity at rest throughout the brain in schizophrenia. Using L2-minimum norm estimate localisation, Fehr *et al*² observed higher fronto-temporal and posterior delta/theta activity in participants with

schizophrenia compared with controls. The present study sought to replicate this whole-brain study, examining slow-wave abnormalities in schizophrenia using a newly developed distributed source modelling method, frequency-domain Vektor-based Spatio-Temporal analysis using L1-minimum norm (VESTAL).^{17,30} VESTAL has the advantage over other distributed source models in that VESTAL requires no predetermination of number of sources, can model dipolar and non-dipolar sources, and can distinguish 100% temporally correlated sources.

Regarding the clinical significance of slowing, previous studies have reported a variety of findings. Using MEG, Fehr *et al*²⁴ reported that temporal delta dipole density positively correlated with negative symptoms, and Rockstroh *et al*²¹ observed that individuals with schizophrenia with more affective flattening and less depression displayed more frontocentral slowing. Similar associations between delta and theta slow-wave activity and negative symptoms have also been reported in EEG studies.³¹ Another study, however, observed findings in the opposite direction, with associations between increased delta activity in frontal, inferior temporal and parahippocampal gyrus in schizophrenia and fewer negative symptoms.³² Finally, other studies have reported associations between slowing and positive symptoms. Sperling *et al*²⁸ and Wienbruch *et al*¹² showed associations between delta dipole densities in temporoparietal regions and positive symptoms, and Fehr *et al*² showed that frontal delta and theta activity was associated with positive symptoms (as noted in the Discussion, variability in findings across studies may reflect differences in patient samples). Based on the above, in addition to using VESTAL to identify the location of slowing in schizophrenia, the present study sought to better understand the functional consequences of abnormal slow-wave activity in schizophrenia. Given that the meta-analysis of Boutros *et al*³³ showed that EEG low-frequency oscillatory abnormalities in schizophrenia are primarily localised to frontal regions and that increased frontal low-frequency EEG power is a unique endophenotype for schizophrenia,^{6,22} and given that dysfunction in frontal regions is associated with impairments in attention³⁴ as well as negative symptoms,^{8,20,35} it was hypothesised that increased slowing would be associated with poorer performance on tests of attention and with more severe negative symptoms. Since negative symptoms and cognitive impairments are associated with poor functional outcome in schizophrenia,³⁶ associations between slowing and measures of functional capacity were also evaluated. Support for this hypothesis would show that slowing is associated with poorer function and thus is perhaps a target for treatment.

Method

Participants

A total of 41 patients with chronic schizophrenia (34 men, mean age 37.63 years (s.d.=12.09)) and 37 age-matched controls

(27 men; mean age 38.92 years (s.d.=11.13)) were recruited. Recruitment procedures and inclusion and exclusion criteria for schizophrenia were: (a) diagnosis of schizophrenia with no other Axis I diagnosis, determined by Structured Clinical Interview for DSM-IV Axis I disorders (SCID-I);³⁷ (b) stable, continuous treatment with antipsychotic medication for at least 3 months; (c) no history of substance dependence in the past 3 years; (d) no history of alcohol or other substance misuse in the past 3 months; (e) no history of head injury with loss of consciousness for more than 5 min; and (f) no psychiatric hospital admissions in the past 3 months. Selection criteria for the control group were: (a) no history of Axis I psychiatric dysfunction; (b) no history of substance dependence in the past 3 years; (c) no history of alcohol or other substance misuse in the past 3 months; (d) no family history of a psychotic disorder in first-degree relatives by self-report; and (e) no history of head injury with loss of consciousness for more than 5 min or other neurological disease. As shown in Table 1, groups did not differ in age, parental socioeconomic status (SES, based on education and occupation information³⁸) or general cognition (IQ estimate from Shipley Institute of Living Scale³⁹). The schizophrenia groups' SES and education were significantly lower than the controls groups' (SES missing for five participants in the control group and six in the schizophrenia group, and data on parental SES missing for six in the control group and six in the schizophrenia group). Two people in the schizophrenia group and four in the control group were left-handed as assessed by the Waterloo Handedness Questionnaire.⁴⁰ Twelve participants in the schizophrenia group and eight in the control group were smokers. Before the study, the nature of the study was explained to all participants and written consent was obtained. The study was approved by the Human Subjects Institutional Review Boards at the Raymond G. Murphy Veterans Affairs Medical Center (VAMC) and the Human Research Review Committee (HRRC) at the University of New Mexico School of Medicine.

In the schizophrenia group, 31 participants were treated with second-generation antipsychotics and 5 were treated with the first-generation antipsychotic haloperidol. Two participants were treated with a combination of first- and second-generation antipsychotics. One patient was not on antipsychotic medication but was stable. Each participant's antipsychotic medication dosage was converted to olanzapine equivalent dosage (average dosage 57.22 mg/day, dosage missing for two participants).

Clinical symptoms, attention and assessment of functional capacity

The participants with schizophrenia were administered the Positive and Negative Syndrome Scale (PANSS)⁴¹ within a week of MEG recording. PANSS scores were not available for five participants. Possible PANSS Positive (PANSS-P) and Negative (PANSS-N) scale scores range from a minimum of 3 (no impairment) to a maximum of 49 (severe impairment). The mean PANSS-P total

Table 1 Demographic information

	Control group (n = 37)	Schizophrenia group (n = 41)	Group differences		
			t (d.f.)	χ^2	P
Age, mean (s.d.)	38.92 (11.13)	37.63 (12.09)	0.49 (76)		0.63
Gender, male: n	27	34		1.13	0.29
Education, years: mean (s.d.)	14.12 (1.06)	13.05 (2.22)	2.65 (74)		0.01
Socioeconomic status, mean (s.d.)	52.47 (16.13)	65.91 (10.42)	-4.09 (65)		<0.001
Parental socioeconomic status, mean (s.d.)	42.97 (17.39)	46.74 (19.27)	-0.83 (64)		0.41
IQ, mean (s.d.)	98.39 (11.04)	94.16 (13.10)	1.49 (71)		0.14

score was 17.72 (range 7–32) and the mean PANSS-N total score was 15.53 (range 9–22). To assess attention, all participants were administered the Trail Making Test A⁴² and the Conners' Continuous Performance Test II Clinical Confidence Index (CPT-CCI).⁴³ The CPT-CCI indicates closeness to a clinical or non-clinical profile. For example, a CPT-CCI score of 75 indicates a 75% confidence that the individual belongs to a clinical population. To assess functional capacity with regard to independent living and employment, all participants were administered the Brief University of California San Diego Performance-based Skills Assessment (UPSA-B).⁴⁴ The sum score of the two UPSA-B subscales (communication and financial ability) was used. The range on the UPSA-B communication subscale was 4–9 for the control group and 3–9 for the schizophrenia group. The range on the UPSA-B financial subscale was 6–10 for the control group and 2–10 for the schizophrenia group. Although groups did not differ in IQ, the schizophrenia group performed more poorly on all tests of attention and functional capacity (P 's < 0.001).

MEG and MRI data acquisition and coregistration

The MEG data were recorded using a 306-channel Vector-View system (Elekta-Neuromag, Helsinki, Finland) that uses planar-gradiometer and magnetometer sensors with a sampling rate of 1000 Hz and a band-pass of 0.1–330 Hz. Electro-oculograms (EOGs) (vertical EOG on the upper and lower left sides) and electrocardiograms (ECGs) (at the clavicles) were also obtained. The participant's head position was monitored using four head position indicator (HPI) coils attached to the scalp. Five minutes of spontaneous MEG data were collected while the participant rested with their eyes closed.

After the MEG session, sMRI provided T_1 -weighted, 3-D anatomical images using a 3T Siemens Trio scanner (voxel size 111 mm³). To coregister MEG and sMRI data, three anatomical landmarks (nasion and right and left preauriculars) as well as an additional 200+ points on the scalp and face were digitised for each participant using the Probe Position Identification (PPI) System (Polhemus, Colchester, VT). The three fiducials were identified in the participant's sMRI, and a transformation matrix that involved rotation and translation between the MEG and sMRI coordinate systems was obtained via a least-squares fit of the PPI measurements to the surfaces of the scalp and face from the sMRI.

Frequency-domain VESTAL source imaging for oscillatory MEG signal

The MEG data were first processed with signal space separation (SSS)^{45,46} using Maxfilter (Elekta MaxfilterTM; Elekta Oy). SSS separates neuronal magnetic signals arising from inside the MEG sensor array from external magnetic signals arising from the surrounding environment to reduce environmental noise and artefacts. After SSS, MEG data were visually inspected for muscle and eye-blink artefact and segments with artefact removed. The amount of data eliminated by visual inspection was 35% for the control group and 39% for the schizophrenia group. Groups did not differ in the amount of artefact-free data ($t(76) = 1.27$, $P = 0.21$). A participant-specific realistic boundary element method (BEM) head model was used for MEG forward calculation.⁴⁷ The BEM mesh was constructed by tessellating the inner skull surface from the T_1 -weighted MRI into ~6000 triangular elements with ~5 mm size. Cubic source grid with 5 mm size was used for calculating the MEG gain (i.e. lead-field) matrix, which produced a grid with ~7000 nodes covering the cortical and subcortical grey matter of the whole brain.

Eyes-closed data were filtered to examine delta (1–4 Hz) and theta activity (4–7 Hz). A frequency-domain band-pass filter with zero phase shift via discrete Fourier transform was used. At each end of the band-pass filter, the transition of the Hanning window in the filter was selected to be at 10% of the associated cut-off frequency. The MEG data were divided into 2.5 s epochs with 50% overlap. The sensor-space frequency-domain data were submitted to frequency-domain VESTAL to obtain the source amplitude (root mean squared) MEG low-frequency source images. In this approach, a fast Fourier transform (FFT) was first performed for each epoch. This step transferred the time-domain MEG sensor-waveform signal into frequency-domain Fourier coefficients for different frequency bins within the delta and theta bands. Next, L1 minimum-norm based frequency-domain VESTAL analysis was performed to obtain MEG source images for the real and imaginary part of the Fourier coefficients separately.¹⁷ The frequency-domain source power for each grid node was obtained by summing the power from the real and imaginary parts across all frequency bins within each band. The above procedure was repeated for each epoch, and the mean source power across all epochs was obtained for each grid node. The outcome of frequency-domain VESTAL analysis was a set of MEG source power images used in the group analysis.¹⁷

Group statistics of VESTAL solution

The frequency-domain VESTAL source grid was obtained by sampling grey-matter areas from the T_1 -weighted MRI of each participant. VESTAL source images for delta and theta were registered to Montreal Neurological Institute (MNI) space using an affine transformation (FLIRT-FMRIB's Linear Image Registration Tool) in FSL (www.fmrib.ox.ac.uk/fsl/). To examine group differences in delta and theta activity throughout the brain, between-group t -tests compared delta and theta activity in VESTAL source images.

Correlations examined associations between delta and theta activity and measures of function. To reduce the number of correlations, analyses examining associations between slow-wave activity and measures of function were examined only in areas where group differences in slow-wave activity were observed, summing activity across voxels in regions of interest (ROI) identified in the VESTAL group difference maps. Correlations were computed separately between theta and delta activity at each ROI and (a) clinical symptoms: PANSS-N scores; (b) attention: CPT-CCI and Trail A completion time; and (c) functional capacity: UPSA-B sum score. For all whole-brain analyses the cluster size needed to obtain a family-wise correction was determined using AFNI AlphaSim (B. Douglas Ward, 2000; <http://afni.nimh.gov/pub/dist/doc/manual/AlphaSim.pdf>).

Results

Slow-wave activity

At no location was theta or delta activity greater in the control group than in the schizophrenia group. For both frequencies, the schizophrenia group had more slow-wave activity than the control group in temporoparietal regions (supramarginal gyrus, angular gyrus, planum temporale and middle temporal gyrus) and frontal regions (frontal pole, inferior frontal gyrus and middle frontal gyrus) ($P < 0.05$, uncorrected). Although group differences were observed in both hemispheres, after applying cluster-thresholded family-wise correction (>6339 voxels for delta and >6171 voxels for theta), as shown in Fig. 1 (in MNI coordinates) group differences were observed only in the right hemisphere for both frequency bands. Even though participants with current substance or alcohol misuse/dependence were excluded from

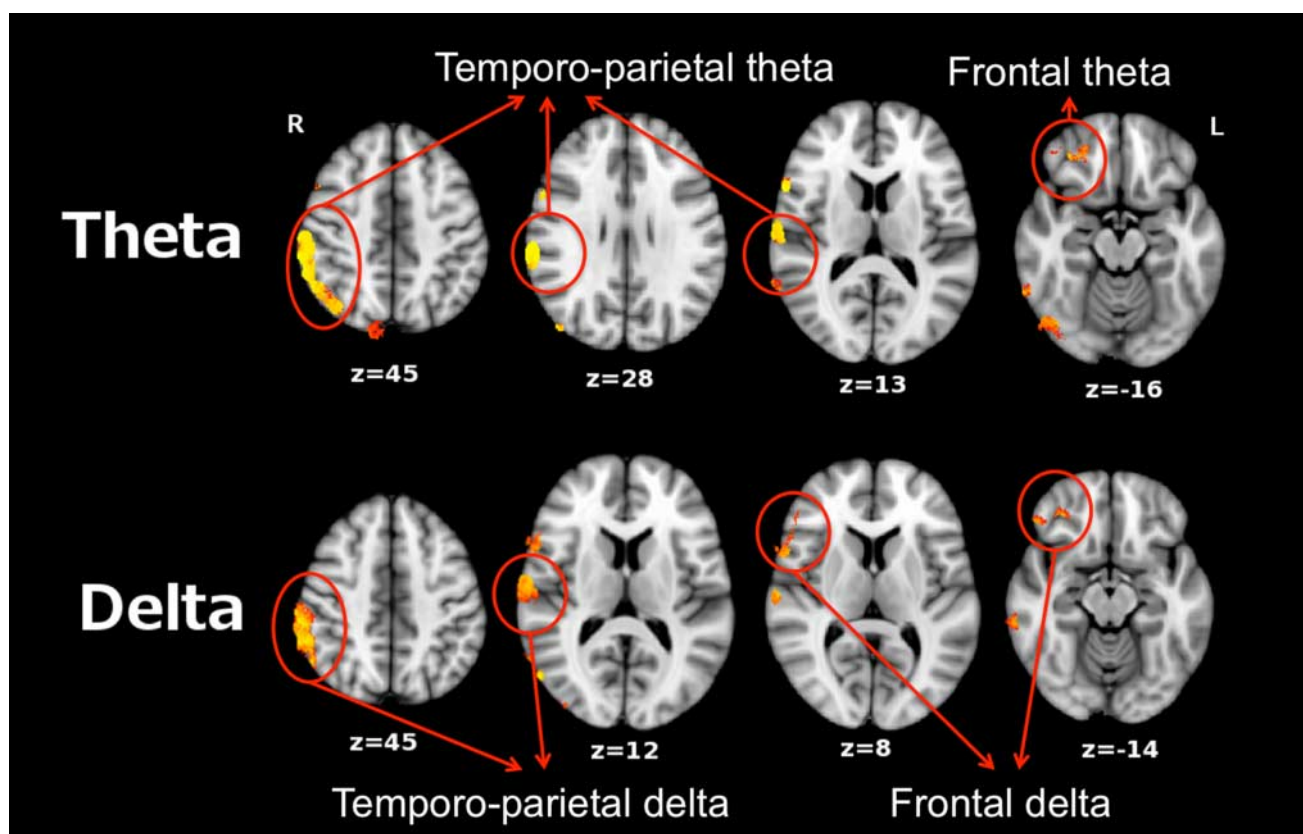


Fig. 1 Between-group VESTAL-based Spatio-Temporal analysis using L1-minimum norm (VESTAL) analyses for theta and delta.

Clusters in yellow/red show more right-hemisphere slow-wave activity in the schizophrenia group than in the control group ($P < 0.05$, family-wise corrected).

participation in this study, analyses were re-run removing participants who had ever been treated for substance or alcohol misuse/dependence (i.e. treatment more than 3 years prior to enrolment in this study). The group differences remained significant. All analyses below, although reported for the full sample, were also re-run excluding individuals who had ever been treated for substance or alcohol misuse/dependence (i.e. treatment more than 3 years prior to enrolment in this study). In all cases but one, findings remained the same, and relationships were generally stronger with these participants excluded. For example, the relationship between delta frontal slowing and negative symptoms became stronger, with an R^2 increase from 0.19 to 0.25. A significant association became marginally significant in only one analysis. Increased antipsychotic dosage (i.e. olanzapine equivalent dosage) was associated with decreased right temporo-parietal theta activity ($R^2 = 0.18$, $P = 0.01$). No association was observed between medication dosage and delta activity.

Slow-wave activity and schizophrenia symptoms

Based on the group difference findings, measures of delta and theta activity in two ROIs were obtained: a right temporo-parietal ROI and a right-frontal ROI (Fig. 1). For the 37 patients whose symptom ratings were available, 3 participants were excluded as theta and delta univariate outliers, defined as individuals more than 3 standard deviations from the group mean. Although the pattern of findings was unchanged, and in many cases P -values showed more significance with outliers included, the outliers were excluded as a conservative approach. As shown in Fig. 2, right-frontal delta activity explained 19% of the variance in PANSS-N scores ($R^2 = 0.19$, $P = 0.01$). No relationships were observed for

theta activity and PANSS-N scores. To examine the specificity of the PANSS-N findings, exploratory analyses examined associations with PANSS-P scores. No relationship with PANSS-P scores was observed at either frequency or either ROI (R^2 's < 0.02).

The right-frontal delta and PANSS-N associations remained significant after removing variance associated with age ($R^2 = 0.20$, $P = 0.01$). Of note, the association between age and slowing was not significant ($R^2 = 0.02$, $P = 0.20$), indicating that slowing was not greater in older participants. Finally, no relationship was observed between antipsychotic dosage and PANSS scores (R^2 's < 0.02). Associations between right-frontal delta and PANSS-N scores remained unchanged after removing variance associated with medication dosage.

Slow-wave activity and predictors of cognition and functional capacity

Hierarchical regressions examined associations between slowing and attention. To determine whether associations were specific to attention, regressions were run with the IQ estimate entered first, group second, performance on the attention test third (separate analyses for CPT-CCI and Trail A completion time) and the group \times attention interaction term last (outliers with high slowing again removed). Lower IQ scores were associated with increased right-frontal delta slowing in the total sample, $F(1,65) = 5.63$, $R^2 = 0.08$, $P = 0.02$. After removing variance associated with IQ, group differences in right-frontal delta slowing remained, $F(1,64) = 4.60$, $P = 0.04$. After removing variance associated with IQ and group, impaired attention (higher CPT-CCI) was associated with greater right-frontal delta slowing, $F(1,63) = 3.94$, R^2 change 0.05, $P = 0.05$. The group \times attention

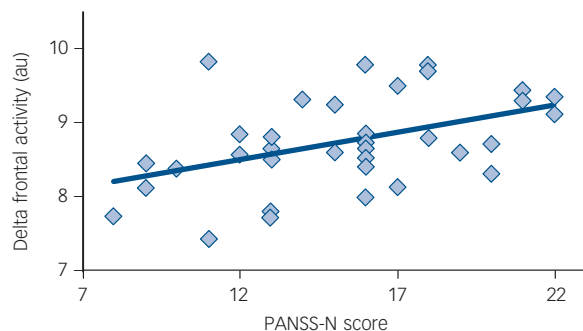


Fig. 2 Association between right-frontal delta and negative symptoms (on the Positive and Negative Syndrome Scale – negative scale score (PANSS-N)) in schizophrenia ($R^2 = 0.19$, $P = 0.01$). au, arbitrary units.

interaction was not significant, indicating the same association in the two groups ($P = 0.55$). No relationships were observed for Trail A completion time.

Hierarchical regressions next examined associations between slowing and functional capacity, with UPSA-B scores entered first, group second and the group \times UPSA-B interaction term last. Poorer UPSA-B scores were associated with increased right-frontal delta slowing in the total sample, $F(1,62) = 3.98$, $R^2 = 0.06$, $P = 0.05$. No relationships were observed with theta activity.

Strongest predictors of slow-wave activity

Given associations only with right-frontal delta, stepwise regression analyses with PANSS-N, IQ, CPT-CCI and UPSA-B determined the functional measure(s) that best predicted right-frontal delta slowing in schizophrenia (given no PANSS-N measures in the control group, this first analysis was conducted only for the schizophrenia group). Stepwise analyses (probability of F -to-enter $P < 0.05$, probability of F -to-remove $P > 0.10$) indicated that PANSS-N scores accounted for the most unique variance in right-frontal delta activity in the schizophrenia group ($R^2 = 0.24$, $P = 0.01$). After removing the variance associated with PANSS-N, no other variable explained unique variance. Partial correlations showed that PANSS-N remained associated with right-frontal delta ($R^2 = 0.20$, $P = 0.03$) even after removing variance in these two measures associated with PANSS-P, IQ, CPT-CCI and UPSA-B, indicating a unique relationship between PANSS-N and right-frontal delta slowing. Zero-order correlations showed no relationship between PANSS-N, IQ, CPT-CCI and UPSA-B. Steiger's Z^{48} ($z = 2.05$, $P = 0.04$) confirmed that the correlation between slowing and PANSS-N scores ($r = 0.43$) was significantly larger than the correlation between slowing and PANSS-P scores ($r = 0.05$), demonstrating that right-frontal delta slowing was associated with negative but not positive symptoms. Finally, even though no relationship was observed between theta slowing and negative symptoms, Steiger's Z^{48} comparing the correlation between right-frontal delta slowing and PANSS-N scores ($r = 0.43$) and the correlation between right-frontal theta slowing and PANSS-N scores ($r = 0.15$) showed no difference ($z = 1.27$, $P = 0.21$), indicating that associations with PANSS-N scores were similar for theta and delta.

Given no significant interaction terms in any of the hierarchical regressions, analogous stepwise analyses were run for the total sample excluding the PANSS-N scores. In the full sample, stepwise analyses indicated that CPT-CCI ($R^2 = 0.14$, $P = 0.003$) and IQ (R^2 change 0.08, $P = 0.02$) explained unique variance in right-frontal delta activity.

Discussion

Increased slow-wave activity in schizophrenia

Study findings showed frontal slowing in participants with schizophrenia and showed that slowing is associated with negative symptoms and functional outcome. Present findings suggest that treatment-associated decreases in slowing could be accompanied by improved functional outcome and thus also suggest frontal slowing as a potential treatment outcome measure. As hypothesised and replicating previous findings,^{2,12,21,24,32} increased delta and theta slowing in individuals with schizophrenia was observed in frontal and temporoparietal regions. Studies examining slow-wave activity suggest a detrimental effect of enhanced delta and theta activity at rest. For example, there is an inverse relationship between spontaneous slow-wave oscillations and task-relevant oscillations, with increased low-frequency oscillatory power at rest associated with reduced post-stimulus power⁴⁹ as well as delayed evoked auditory latencies.⁵⁰ Yordanova & Kolev⁵¹ suggested that during childhood development the ability to attend to stimuli increases as spontaneous low-frequency oscillations decrease and the amplitude of event-related low-frequency oscillations increases. In people with schizophrenia, Kirino *et al*⁵² found an association between increased frontal delta and theta activity at rest and decreased mismatch negativity. All the above are in line with the conclusion of Bates *et al*⁵³ that baseline low-frequency neural impairments in schizophrenia diminish the ability to coordinate neural circuits during information-processing tasks. As detailed below, present findings support this view, showing that abnormal slowing in schizophrenia is of clinical interest, predicting symptom severity and cognitive impairments.

Associations between slowing, clinical symptoms, cognition and functional capacity

Increased right-frontal delta slowing was associated with negative symptom, attention and functional capacity impairments. Present findings thus support previous findings^{6,49,54} as well as the meta-analysis by Boutros *et al*³³ suggesting that abnormally elevated resting frontal delta is a strong schizophrenia biological correlate, predicting cognitive performance and occupational function in schizophrenia. Stepwise regression and partial correlation analyses indicated that PANSS negative symptoms were the best predictor of slowing and also predicted unique variance in slowing (i.e. after removing variance in slowing associated with the other measures of function).

The overall pattern of the present results is in line with the notion of frontal lobe pathology in people with schizophrenia affecting multiple domains. For example, symptoms such as poor initiative, social withdrawal and impaired attention are similar to the symptoms observed in patients with frontal-lobe disease.⁸ Functional imaging studies often report reduced prefrontal activity in schizophrenia during cognitive tasks. Itoh *et al*³² suggested that frontal-lobe dysfunction has a role in attention deficits and negative symptoms.^{8,35} Lisman²⁰ hypothesised that an abnormal balance between excitatory and inhibitory synapses in the frontal lobe could cause cognitive deficits and negative symptoms in schizophrenia. This hypothesis is supported by electrophysiological studies showing associations between frontal EEG slowing and negative symptoms.⁵ In this context, increased frontal delta activity may contribute to neural network dysfunction and thus to negative symptoms and cognitive impairment in schizophrenia.

Some studies have found associations between negative symptoms and IQ and attention, with some researchers arguing

that individuals with schizophrenia showing the greatest cognitive impairment have the most prominent negative symptoms.⁵⁵ Others, however, have argued that IQ is not associated with negative symptoms.^{56–58} For example, Meyer *et al*⁵⁹ showed that although there is modest overlap among cognitive symptoms, negative symptoms and social function, these domains make unique contributions in high-risk individuals. The present analysis showed that, even though attention and IQ are associated with frontal slowing, the IQ and attention relationship is not significant after removing variance associated with negative symptoms. Given that zero-order correlations showed no relationship between negative symptoms, IQ and attention, this suggested that the relationship between frontal slowing and other cognitive measures (IQ and attention) is partially mediated by negative symptoms. This is consistent with literature showing that negative symptoms might mediate relationships between cognition and schizophrenia functional outcome.⁵⁵

In the present study, the associations between temporoparietal theta slowing and olanzapine dosage perhaps indicates that frontal slowing is more similar to a trait measure and temporoparietal slowing more similar to a state measure. Along these lines, whereas antipsychotics ameliorate positive symptoms (PANSS-P scores generally low in the present sample), following antipsychotic treatment patients continue to show pervasive negative symptoms and deficits in cognitive function, symptoms that best predict a patient's future social and occupational performance.⁶⁰ This perhaps is the reason why in the present study a relationship was observed between delta slowing and negative but not positive symptoms.

The present association between delta slowing and negative symptoms is consistent with Fehr *et al*²⁴ and in line with studies indicating that slowing is more pronounced in patients with dominating negative symptoms than in those with dominating positive symptoms.^{61,62} The above may also, in part, explain study differences between slowing and schizophrenia symptoms. For example, the relationship between slowing and positive symptoms reported in Fehr *et al*² and Wienbruch *et al*¹² could be because these participants were in-patients and thus more likely to be acutely ill and thus have more positive symptoms. Participants in the present study were out-patients with chronic schizophrenia with primarily negative symptoms, perhaps resulting in absent associations between slowing and positive symptoms. Slowing may also be a risk factor or an endophenotype, as studies have shown that slowing is observed in people with schizophrenia and their relatives^{22,63} during resting state as well as during tasks, leading to the conclusion that slowing appears to be a heritable risk factor/trait for schizophrenia.^{22,33,63} Finally, the association between temporoparietal theta slowing and antipsychotic dosage observed in the present study suggests that antipsychotic medication modulates slowing. There is additional evidence to support this conclusion. For example, Canive *et al*⁷ showed more slowing in schizophrenia at the end of a 10-day washout than during 8-week treatment with novel antipsychotics, with some evidence in that small sample that decreased slowing was associated with improved positive symptoms.

It is of note that low-frequency abnormalities in schizophrenia are not specific to the resting state and are observed in evoked studies. For example, EEG studies have shown that early auditory abnormalities in schizophrenia are best characterised by decreased phase-locking in schizophrenia.^{1,64–68} Hong *et al*⁶³ also showed that elevated resting low-frequency activity was associated with decreased suppression of low-frequency activity in an auditory paired-click task. Examining auditory activity using MEG, Edgar *et al*⁶⁹ observed greater left superior temporal gyrus pre-stimulus ~4 to 20 Hz power in participants with schizophrenia than in

healthy controls. These and other studies indicate that low-frequency oscillatory abnormalities appear to be a primary abnormality in schizophrenia, observed at rest as well as during tasks. Finally, it is of note that in the present study increased right-frontal delta slowing predicted poorer performance on attention and functional-capacity measures in individuals with schizophrenia as well as in controls (i.e. no significant interactions involving group), thus suggesting that MEG slowing is a sensitive, general measure of frontal brain dysfunction.

Future directions

Present findings showed increased right-frontal and temporoparietal slowing in people with schizophrenia, with right-frontal delta slowing associated with negative symptoms and cognitive performance. These findings (in a predominantly medicated sample) suggest that future studies should consider treatments that target slowing in an attempt to modulate functional outcome. Future studies examining associations between slowing and grey matter, white-matter fibre pathways and blood flow are of interest to better understand the structural abnormalities associated with slowing in schizophrenia. Finally, studies examining functional connectivity between regions of slowing (i.e. areas with pathology) and functionally connected areas are of interest to further identify the functional consequences of regional slowing in schizophrenia.

Yu-Han Chen, PhD, The Children's Hospital of Philadelphia and University of Pennsylvania, Department of Radiology, Philadelphia; **Breannan Stone-Howell**, MS, New Mexico Raymond G. Murphy VA Healthcare System, Psychiatry Research, Albuquerque, and The University of New Mexico School of Medicine, Department of Psychiatry, Albuquerque, New Mexico; **J. Christopher Edgar**, PhD, The Children's Hospital of Philadelphia and University of Pennsylvania, Department of Radiology, Philadelphia; **Mingxiang Huang**, PhD, University of California, San Diego, Department of Radiology, and San Diego VA Healthcare System, Department of Radiology, San Diego, California; **Cassandra Wootton**, BS, New Mexico Raymond G. Murphy VA Healthcare System, Psychiatry Research, Albuquerque, and The University of New Mexico School of Medicine, Department of Psychiatry, Albuquerque, New Mexico; **Michael A. Hunter**, BS, New Mexico Raymond G. Murphy VA Healthcare System, Psychiatry Research, Albuquerque, The University of New Mexico School of Medicine, Department of Psychiatry and Department of Psychology, Albuquerque, New Mexico; **Brett Y. Lu**, MD, PhD, The University of Hawaii at Manoa, Department of Psychiatry, Honolulu, Hawaii; **Joseph R. Sadek**, PhD, New Mexico Raymond G. Murphy VA Healthcare System, Psychiatry Research, Albuquerque, New Mexico; **Gregory A. Miller**, PhD, University of California, Los Angeles, Department of Psychology, Los Angeles, California; **José M. Cañive**, MD, New Mexico Raymond G. Murphy VA Healthcare System, Psychiatry Research, Albuquerque, and The University of New Mexico School of Medicine, Department of Psychiatry, Albuquerque, New Mexico, USA

Correspondence: Yu-Han Chen, The Children's Hospital of Philadelphia, Department of Radiology, Seashore Building Room 115A, Philadelphia, PA 19104, USA. Email: chen4@email.chop.edu

First received 8 Aug 2014, final revision 4 Nov 2014, accepted 8 Nov 2014

Funding

This research was supported by grants from NIMH (R01 MH65304 to J.M.C., K08 MH085100 to C.E.), a VA Merit grant (VA Merit CSR&D: IIR-04-212-3 to J.M.C.) and a Merit Review Grant from the Department of Veterans Affairs to M.H.

References

- Edgar JC, Hanlon FM, Huang MX, Weisend MP, Thoma RJ, Carpenter B, et al. Superior temporal gyrus spectral abnormalities in schizophrenia. *Psychophysiology* 2008; **45**: 812–24.
- Fehr T, Kissler J, Moratti S, Wienbruch C, Rockstroh B, Elbert T. Source distribution of neuromagnetic slow waves and MEG-delta activity in schizophrenic patients. *Biol Psychiatry* 2001; **50**: 108–16.
- Gandal MJ, Edgar JC, Klook K, Siegel SJ. Gamma synchrony: towards a translational biomarker for the treatment-resistant symptoms of schizophrenia. *Neuropharmacology* 2012; **62**: 1504–18.
- Rosburg T, Trautner P, Ludowig E, Helmstaedter C, Bien CG, Elger CE, et al. Sensory gating in epilepsy – effects of the lateralization of hippocampal sclerosis. *Clin Neurophysiol* 2008; **119**: 1310–9.

- 5 Winterer G, Ziller M, Dorn H, Frick K, Mulert C, Wuebben Y, et al. Frontal dysfunction in schizophrenia – a new electrophysiological classifier for research and clinical applications. *Eur Arch Psychiatry Clin Neurosci* 2000; **250**: 207–14.
- 6 Narayanan B, O’Neil K, Berwise C, Stevens MC, Calhoun VD, Clementz BA, et al. Resting state electroencephalogram oscillatory abnormalities in schizophrenia and psychotic bipolar patients and their relatives from the bipolar and schizophrenia network on intermediate phenotypes study. *Biol Psychiatry* 2013; **76**: 456–65.
- 7 Canive JM, Lewine JD, Edgar JC, Davis JT, Miller GA, Torres F, et al. Spontaneous brain magnetic activity in schizophrenia patients treated with aripiprazole. *Psychopharmacol Bull* 1998; **34**: 101–5.
- 8 Weinberger DR. Schizophrenia and the frontal lobe. *Trends Neurosci* 1988; **11**: 367–70.
- 9 Pascual-Marqui RD, Lehmann D, Koenig T, Kochi K, Merlo MC, Hell D, et al. Low resolution brain electromagnetic tomography (LORETA) functional imaging in acute, neuroleptic-naive, first-episode, productive schizophrenia. *Psychiatry Res* 1999; **90**: 169–79.
- 10 Rockstroh B, Watzl H, Kowalik ZJ, Cohen R, Sterr A, Muller M, et al. Dynamical aspects of the EEG in different psychopathological states in an interview situation: a pilot study. *Schizophr Res* 1997; **28**: 77–85.
- 11 Sponheim SR, Clementz BA, Iacono WG, Beiser M. Resting EEG in first-episode and chronic schizophrenia. *Psychophysiology* 1994; **31**: 37–43.
- 12 Wienbruch C, Moratti S, Elbert T, Vogel U, Fehr T, Kissler J, et al. Source distribution of neuromagnetic slow wave activity in schizophrenic and depressive patients. *Clin Neurophysiol* 2003; **114**: 2052–60.
- 13 Galderisi S, Mucci A, Volpe U, Boutros N. Evidence-based medicine and electrophysiology in schizophrenia. *Clin EEG Neurosci* 2009; **40**: 62–77.
- 14 Iramina K, Ueno S. Source estimation of spontaneous MEG activity and auditory evoked responses in normal subjects during sleep. *Brain Topogr* 1996; **8**: 297–301.
- 15 Llinas R, Urbano FJ, Leznik E, Ramirez RR, van Marle HJ. Rhythmic and dysrhythmic thalamocortical dynamics: GABA systems and the edge effect. *Trends Neurosci* 2005; **28**: 325–33.
- 16 Rechtschaffen A, Kales, A. *A Manual of Standardized Terminology, Techniques and Scoring System for Sleep Stages of Human Subjects*. US Department of Health, Education and Welfare, 1968.
- 17 Huang MX, Nichols S, Robb A, Angeles A, Drake A, Holland M, et al. An automatic MEG low-frequency source imaging approach for detecting injuries in mild and moderate TBI patients with blast and non-blast causes. *Neuroimage* 2012; **61**: 1067–82.
- 18 Fernandez A, Maestu F, Amo C, Gil P, Fehr T, Wienbruch C, et al. Focal temporoparietal slow activity in Alzheimer’s disease revealed by magnetoencephalography. *Biol Psychiatry* 2002; **52**: 764–70.
- 19 Vieth JB, Kober H, Grummich P. Sources of spontaneous slow waves associated with brain lesions, localized by using the MEG. *Brain topogr* 1996; **8**: 215–21.
- 20 Lisman J. Excitation, inhibition, local oscillations, or large-scale loops: what causes the symptoms of schizophrenia? *Curr Opin Neurobiol* 2012; **22**: 537–44.
- 21 Rockstroh BS, Wienbruch C, Ray WJ, Elbert T. Abnormal oscillatory brain dynamics in schizophrenia: a sign of deviant communication in neural network? *BMC Psychiatry* 2007; **7**: 44.
- 22 Venables NC, Bernat EM, Sponheim SR. Genetic and disorder-specific aspects of resting state EEG abnormalities in schizophrenia. *Schizophr Bull* 2009; **35**: 826–39.
- 23 Nakashima K, Sato H. The effects of various mental tasks on appearance of frontal midline theta activity in EEG. *J Hum Ergol* 1992; **21**: 201–6.
- 24 Fehr T, Kissler J, Wienbruch C, Moratti S, Elbert T, Watzl H, et al. Source distribution of neuromagnetic slow-wave activity in schizophrenic patients – effects of activation. *Schizophr Res* 2003; **63**: 63–71.
- 25 Cuffin BN, Cohen D. Comparison of the magnetoencephalogram and electroencephalogram. *Electroencephalogr Clin Neurophysiol* 1979; **47**: 132–46.
- 26 de Jongh A, de Munck JC, Baayen JC, Jonkman EJ, Heethaar RM, van Dijk BW. The localization of spontaneous brain activity: first results in patients with cerebral tumors. *Clin Neurophysiol* 2001; **112**: 378–85.
- 27 Ropohl A, Sperling W, Elstner S, Tomandl B, Reulbach U, Kaltenhauser M, et al. Cortical activity associated with auditory hallucinations. *Neuroreport* 2004; **15**: 523–6.
- 28 Sperling W, Martus P, Kober H, Bleich S, Kornhuber J. Spontaneous, slow and fast magnetoencephalographic activity in patients with schizophrenia. *Schizophr Res* 2002; **58**: 189–99.
- 29 Sperling W, Vieth J, Martus M, Demling J, Barocka A. Spontaneous slow and fast MEG activity in male schizophrenics treated with clozapine. *Psychopharmacology* 1999; **142**: 375–82.
- 30 Huang MX, Theilmann RJ, Robb A, Angeles A, Nichols S, Drake A, et al. Integrated imaging approach with MEG and DTI to detect mild traumatic brain injury in military and civilian patients. *J Neurotrauma* 2009; **26**: 1213–26.
- 31 Gattaz WF, Mayer S, Ziegler P, Platz M, Gasser T. Hypofrontality on topographic EEG in schizophrenia. Correlations with neuropsychological and psychopathological parameters. *Eur Arch Psychiatry Clin Neurosci* 1992; **241**: 328–32.
- 32 Itoh T, Sumiyoshi T, Higuchi Y, Suzuki M, Kawasaki Y. LORETA analysis of three-dimensional distribution of delta band activity in schizophrenia: relation to negative symptoms. *Neurosci Res* 2011; **70**: 442–8.
- 33 Boutros NN, Arfken C, Galderisi S, Warrick J, Pratt G, Iacono W. The status of spectral EEG abnormality as a diagnostic test for schizophrenia. *Schizophr Res* 2008; **99**: 225–37.
- 34 Laufs H, Krakow K, Sterzer P, Eger E, Beyerle A, Salek-Haddadi A, et al. Electroencephalographic signatures of attentional and cognitive default modes in spontaneous brain activity fluctuations at rest. *Proc Natl Acad Sci USA* 2003; **100**: 11053–8.
- 35 Sekimoto M, Kato M, Watanabe T, Kajimura N, Takahashi K. Reduced frontal asymmetry of delta waves during all-night sleep in schizophrenia. *Schizophr Bull* 2007; **33**: 1307–11.
- 36 Greenwood KE, Landau S, Wykes T. Negative symptoms and specific cognitive impairments as combined targets for improved functional outcome within cognitive remediation therapy. *Schizophr Bull* 2005; **31**: 910–21.
- 37 First MB, Spitzer RL, Gibbon M, William JBW. *Structured Clinical Interview for Axis I DSM-IV Disorders*. Biometrics Research, 1994.
- 38 Oakes JM, Rossi PH. The measurement of SES in health research: current practice and steps toward a new approach. *Soc Sci Med* 2003; **56**: 769–84.
- 39 Zachary RA. *Shipley Institute of Living Scale: Revised Manual*. Western Psychological Services, 1986.
- 40 Bryden MP. Measuring handedness with questionnaires. *Neuropsychologia* 1977; **15**: 617–24.
- 41 Kay SR, Fiszbein A, Opler LA. The positive and negative syndrome scale (PANSS) for schizophrenia. *Schizophr Bull* 1987; **13**: 261–76.
- 42 Reitan RM, Davidson LA. *Clinical neuropsychology: current status and applications*. VH Winston & Sons, 1974.
- 43 Conners K. *Conner’s Continuous Performance Test II (CPT II)*. Multi-Health Systems, 2002.
- 44 Mausbach BT, Harvey PD, Goldman SR, Jeste DV, Patterson TL. Development of a brief scale of everyday functioning in persons with serious mental illness. *Schizophr Bull* 2007; **33**: 1364–72.
- 45 Taulu S, Kajola M, Simola J. Suppression of interference and artifacts by the signal space separation method. *Brain topogr* 2004; **16**: 269–75.
- 46 Song T, Cui L, Gaa K, Feffer L, Taulu S, Lee RR, et al. Signal space separation algorithm and its application on suppressing artifacts caused by vagus nerve stimulation for magnetoencephalography recordings. *J Clin Neurophysiol* 2009; **26**: 392–400.
- 47 Huang MX, Song T, Hagler DJ, Jr, Podgorny I, Jousmaki V, Cui L, et al. A novel integrated MEG and EEG analysis method for dipolar sources. *Neuroimage* 2007; **37**: 731–48.
- 48 Steiger JH. Tests for comparing elements of a correlation matrix. *Psychol Bull* 1980; **87**: 245–51.
- 49 Sponheim SR, Clementz BA, Iacono WG, Beiser M. Clinical and biological concomitants of resting state EEG power abnormalities in schizophrenia. *Biol Psychiatry* 2000; **48**: 1088–97.
- 50 Edgar JC, Khan SY, Blaskey L, Chow VY, Rey M, Gaetz W, et al. Neuromagnetic oscillations predict evoked-response delays and core language deficits in autism spectrum disorders. *J Autism Dev Disord* 2015; **45**: 395–405.
- 51 Yordanova J, Kolev V. Developmental changes in the event-related EEG theta response and P300. *Electroencephalogr Clin Neurophysiol* 1997; **104**: 418–30.
- 52 Kirino E. Mismatch negativity correlates with delta and theta EEG power in schizophrenia. *Int J Neurosci* 2007; **117**: 1257–79.
- 53 Bates AT, Kiehl KA, Laurens KR, Liddle PF. Low-frequency EEG oscillations associated with information processing in schizophrenia. *Schizophr Res* 2009; **115**: 222–30.
- 54 Ferrarelli F, Sarasso S, Guller Y, Riedner BA, Peterson MJ, Bellesi M, et al. Reduced natural oscillatory frequency of frontal thalamocortical circuits in schizophrenia. *Arch Gen Psychiatry* 2012; **69**: 766–74.

- 55 Ventura J, Helleman GS, Thames AD, Koellner V, Nuechterlein KH. Symptoms as mediators of the relationship between neurocognition and functional outcome in schizophrenia: a meta-analysis. *Schizophr Res* 2009; **113**: 189–99.
- 56 Simon MA, Giacomini V, Ferrero F, Mohr S. Is executive function associated with symptom severity in schizophrenia? *Eur Arch Psychiatry Clin Neurosci* 2003; **253**: 216–8.
- 57 Brazo P, Marie RM, Halbecq I, Benali K, Segard L, Delamillieure P, et al. Cognitive patterns in subtypes of schizophrenia. *Eur Psychiatry* 2002; **17**: 155–62.
- 58 Bozikas VP, Kosmidis MH, Anezoulaki D, Giannakou M, Karavatos A. Relationship of affect recognition with psychopathology and cognitive performance in schizophrenia. *J Int Neuropsychol Soc* 2004; **10**: 549–58.
- 59 Meyer EC, Carrion RE, Cornblatt BA, Addington J, Cadenhead KS, Cannon TD, et al. The relationship of neurocognition and negative symptoms to social and role functioning over time in individuals at clinical high risk in the first phase of the North American Prodrome Longitudinal Study. *Schizophr Bull* 2014; **40**: 1452–61.
- 60 Green MF. What are the functional consequences of neurocognitive deficits in schizophrenia? *Am J Psychiatry* 1996; **153**: 321–30.
- 61 Gross A, Joutsiniemi SL, Rimon R, Appelberg B. Clozapine-induced QEEG changes correlate with clinical response in schizophrenic patients: a prospective, longitudinal study. *Pharmacopsychiatry* 2004; **37**: 119–22.
- 62 Saletu B, Kufferle B, Anderer P, Grunberger J, Steinberger K. EEG-brain mapping in schizophrenics with predominantly positive and negative symptoms. Comparative studies with remoxipride/haloperidol. *Eur Neuropsychopharmacol* 1990; **1**: 27–36.
- 63 Hong LE, Summerfelt A, Mitchell BD, O'Donnell P, Thaker GK. A shared low-frequency oscillatory rhythm abnormality in resting and sensory gating in schizophrenia. *Clin Neurophysiol* 2012; **123**: 285–92.
- 64 Blumenfeld LD, Clementz BA. Response to the first stimulus determines reduced auditory evoked response suppression in schizophrenia: single trials analysis using MEG. *Clin Neurophysiol* 2001; **112**: 1650–9.
- 65 Clementz BA, Blumenfeld LD. Multichannel electroencephalographic assessment of auditory evoked response suppression in schizophrenia. *Exp Brain Res* 2001; **139**: 377–90.
- 66 Jansen BH, Hegde A, Boutros NN. Contribution of different EEG frequencies to auditory evoked potential abnormalities in schizophrenia. *Clin Neurophysiol* 2004; **115**: 523–33.
- 67 Johannesen JK, Kieffaber PD, O'Donnell BF, Shekhar A, Evans JD, Hetrick WP. Contributions of subtype and spectral frequency analyses to the study of P50 ERP amplitude and suppression in schizophrenia. *Schizophr Res* 2005; **78**: 269–84.
- 68 Popov T, Jordanov T, Weisz N, Elbert T, Rockstroh B, Miller GA. Evoked and induced oscillatory activity contributes to abnormal auditory sensory gating in schizophrenia. *Neuroimage* 2011; **56**: 307–14.
- 69 Edgar JC, Chen YH, Lanza M, Howell B, Chow VY, Heiken K, et al. Cortical thickness as a contributor to abnormal oscillations in schizophrenia? *Neuroimage* 2014; **4**: 122–9.