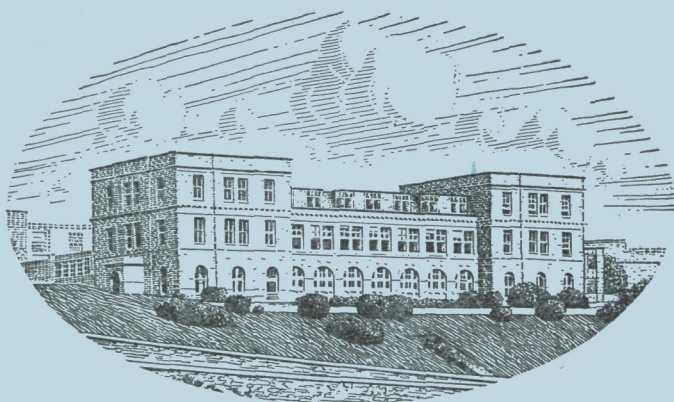


JOURNAL OF THE
MARINE BIOLOGICAL ASSOCIATION
OF THE UNITED KINGDOM



THE PLYMOUTH LABORATORY

VOLUME 46, No. 1
(issued February 1966)

CAMBRIDGE
AT THE UNIVERSITY PRESS
1966

Price Eighty shillings net
(U.S.A. \$13.50)

Annual Subscription for Volume (of three parts); £11 (U.S.A. \$35.00)

MARINE BIOLOGICAL ASSOCIATION OF THE UNITED KINGDOM

PATRON

H.R.H. THE PRINCE PHILIP, DUKE OF EDINBURGH, F.R.S.

OFFICERS AND COUNCIL

President: Prof. C. F. A. PANTIN, Sc.D., D.Sc., Dr Univ., F.R.S.

Vice-Presidents

The Earl of IVEAGH, K.G., C.B., C.M.G., F.R.S.
Prof. A. V. HILL, C.H., O.B.E., Sc.D., LL.D.,
F.R.S.
Sir EDWARD J. SALISBURY, Kt., C.B.E., D.Sc.,
LL.D., F.R.S.
Major E. G. CHRISTIE-MILLER

Prof. Sir JAMES GRAY, Kt., C.B.E., M.C., Sc.D.,
LL.D., F.R.S.
G. M. GRAHAM, C.M.G., O.B.E.
Prof. Sir ALISTER C. HARDY, Kt., D.Sc., F.R.S.
C. M. YONGE, C.B.E., D.Sc., F.R.S.
Rear Admiral SIR EDMUND G. IRVING, K.B.E. C.B.

Honorary Members

Dr H. B. BIGELOW
E. H. E. HAVELOCK, C.B., C.B.E.
Prof. Sir ALISTER C. HARDY, Kt., D.Sc., F.R.S.
Dr A. G. HUNTSMAN
Prof. HANS PETTERSSON, For. Mem. R.S.

Dr A. C. REDFIELD
Prof. G. THORSON, D.Phil.
C. M. YONGE, C.B.E., D.Sc., F.R.S.
Prof. L. A. ZENKEVITCH

COUNCIL

Elected Members

H. A. COLE, D.Sc.
Prof. D. J. CRISP, Ph.D.
R. I. CURRIE
Prof. G. E. FOGG, Ph.D., F.R.S.
Dr F. C. FRASER, C.B.E., D.Sc.
R. S. GLOVER
Prof. A. L. HODGKIN, Sc.D., F.R.S.

Rear Admiral SIR EDMUND G. IRVING, K.B.E., C.B.,
Prof. E. W. KNIGHT-JONES, Ph.D.
Prof. O. E. LOWENSTEIN, D.Sc., F.R.S.
C. H. MORTIMER, Dr.phil., D.Sc., F.R.S.
N. TEBBLE
Prof. W. F. WHITTARD, D.Sc., F.R.S.
C. M. YONGE, C.B.E., D.Sc., F.R.S.

Governors

W. C. TAME (Ministry of Agriculture, Fisheries
and Food)
The Worshipful Company of Fishmongers:
The Prime Warden
Sir EDWARD CHADWYCK-HEALEY, Bt., M.C.
Col. Sir JOHN G. CAREW POLE, Bt., D.S.O., T.D.
Prof. Sir ALISTER C. HARDY, Kt., D.Sc., F.R.S.
(Oxford University)

S. SMITH, Ph.D. (Cambridge University)
EDWARD HINDLE, Sc.D., F.R.S. (British
Association)
Prof. G. P. WELLS, Sc.D., F.R.S. (Zoological
Society)
Prof. Sir JAMES GRAY, Kt., C.B.E., M.C., Sc.D.,
LL.D., F.R.S. (Royal Society)
Prof. A. V. HILL, C.H., O.B.E., Sc.D., LL.D., F.R.S.
(Physiological Society)

Hon. Treasurer: Sir EDWARD CHADWYCK-HEALEY, Bt., M.C., The Mill House,
Hook, Basingstoke, Hants.

Secretary: J. E. SMITH, Sc.D., F.R.S., The Laboratory, Citadel Hill, Plymouth, Devon

SCIENTIFIC STAFF

Director: J. E. SMITH, Sc.D., F.I.Biol., F.R.S.

D. P. WILSON, D.Sc., F.I.Biol., F.R.P.S. (*Zoologist*)
L. H. N. COOPER, D.Sc., F.R.I.C., F.G.S., F.I.Biol.,
F.R.S. (*Chemist*)
G. M. SPOONER, M.B.E., M.A., F.R.E.S. (*Zoologist*)
MARY W. PARKE, D.Sc., Ph.D., F.L.S., F.I.Biol.
(*Botanist*)
P. G. CORBIN, B.A. (*Zoologist*)
J. A. C. NICOL, D.Sc., M.A., D.Phil. (*Experimental
Zoologist*)
N. A. HOLME, M.A. (*Zoologist*)
G. R. FORSTER, B.Sc. (*Zoologist*)

F. A. J. ARMSTRONG, F.R.I.C. (*Chemist*)
E. D. S. CORNER, M.Sc., Ph.D. (*Biochemist*)
A. J. SOUTHWARD, D.Sc., Ph.D. (*Zoologist*)
T. I. SHAW, M.A., Ph.D. (*Physiologist*)
J. V. HOWARTH, B.Sc. (*Physiologist*)
Q. BONE, M.A., D. Phil. (*Zoologist*)
G. T. BOALCH, B.Sc., Ph.D. (*Botanist*)
G. W. BRYAN, B.Sc., Ph.D. (*Zoologist*)
A. G. DAVIES, B.Sc., Ph.D. (*Special Appointment:
Physical Chemist*)

J. H. WICKSTEAD, B.Sc., Ph.D., Ministry of Overseas Development (*Zoologist*)
Prof. E. J. DENTON, Sc.D., B.A., B.Sc., Ph.D., F.I.Biol., F.R.S. (*Physiologist*),
Royal Society Research Professor of Bristol University

JOURNAL OF THE MARINE BIOLOGICAL ASSOCIATION
INSTRUCTIONS FOR THE PREPARATION
OF MANUSCRIPTS

TITLE

The title of the paper should be kept as short as possible.

The name of the author at the beginning of the paper should be followed only by senior qualifications.

TEXT

Manuscripts must be typed (double-spaced) on one side of the paper, leaving ample margins, with the folios numbered. Words to be printed in italic should be underlined. The first mention of Latin names of species should be followed by the authority, except where reference is made to a work in which the authority appears (e.g. *Plymouth Marine Fauna*).

Manuscripts should be as concise as possible. Undue length will undoubtedly lead to delay in publication as the paper will be returned to the author for shortening.

All linear measurements and weights should be in the metric scale.

For symbols and abbreviations, the recommendations of the Royal Society (1951) are followed.

TABLES

Tables should be set out on separate sheets numbered in Arabic numerals, and given a concise heading.

TEXT-FIGURES

Text-figures should be in black ink. It is important to make the lines sufficiently black. Areas to be mechanically stippled should be indicated by light-blue pencil shading.

No drawing should be so large that it must be reduced to less than one-third of its original size. The degree of reduction need not be inserted by the author.

The size of the printed area of the *Journal* page is 18 × 12 cm. The maximum size for a full-page figure (with legend) is 19½ × 13½ cm.

Lettering, numerals, etc., should be marked clearly in blue pencil and indicating the position in which they are to be inserted by an arrow in blue pencil. This should be kept to a workable minimum, all details being included in the legend.

Axes and graduation marks on graphs must be inked in. The lines on graph paper

are not normally reproduced, and should be blue or faint grey.

Legends for figures must be typed all together on a separate sheet, and not inserted on the actual illustrations.

Text-figures are numbered in arabic numerals, and referred to in the text as 'Fig. 1', etc. Where there is a plate containing several figures, the text-figures are referred to as 'Text-fig. 1', etc.

All line-drawings are printed as text-figures, as well as photographs for which fine detail is not required.

PLATES

Photographs should be on smooth-surfaced paper, semi-matt or glossy. The edges of the photograph must be trimmed square. It is important that the background in the photograph be of a uniform tone and free from blemishes. Where several photographs make up a single plate, they are numbered 'Fig. 1', etc.

SUMMARY

Each paper must be accompanied by an informative Summary, giving the main results of the work published.

REFERENCES

References are listed alphabetically at the end of the paper. The full title of the paper must be given. Titles of papers, but not of books, are decapitalized. Titles of Journals are abbreviated as in the *World List of Scientific Publications* (4th ed., 1963 on). Volume (Vol.), Band (Bd.), or Tome (T.) numbers are in Arabic numerals. Where a volume appears in parts the part need only be specified where each has separate pagination. References to books should include the publisher. Citations in text to be given by author's name followed by date in brackets.

Examples:

MARSHALL, S. M., NICHOLLS, A. G. & ORR, A. P., 1939. On the growth and feeding of young herring in the Clyde. *J. mar. biol. Ass. U.K.*, Vol. 23, pp. 427-55.

RUSSELL, F. S. & YONGE, C. M., 1928. *The Seas*. 379 pp. London: Frederick Warne.

Authors are requested to see that their manuscripts are in finished form and completely ready for publication so that corrections may be reduced to a minimum, and these are confined as far as possible to the first proof. If the cost for corrections exceeds a reasonable figure, the author is liable to be charged to the full extent of the excess.

The Journal of General Microbiology

Editors: B. C. J. G. KNIGHT and A. F. B. STANDFAST

Contents of Volume 41, No. 3, December 1965. 35s. net

- P. Pease and N. Laughton.** The antigenic structure of haemophilus and corynebacterium species from the human genital tract claimed to be associated with or derived from *Mycoplasma hominis*.
- P. Pease.** The antigenic structure of PPLO (*Mycoplasma hominis*) and related bacteria.
- M. Tsukamura.** Salicylate degradation test for differentiation of *Mycobacterium fortuitum* from other mycobacteria.
- A. P. Harrison, Jun.** Thymine incorporation and metabolism by various classes of thymine-less bacteria.
- M. Tsukamura.** Conversion of salicylate to catechol by *Mycobacterium fortuitum*.
- R. Craveri, L. R. Hill, P. L. Manachini and L. G. Silvestri.** Deoxyribonucleic acid base compositions among thermophilic actinomycetes: the occurrence of two strains with low GC content.
- L. R. G. Valadon and J. B. Heale.** Carotenoids in mutants of *Verticillium albo-atrum*.
- K. Rosendal and P. Bülow.** Temperature phages influencing lipase production by *Staphylococcus aureus*.
- M. Hutchinson, K. I. Johnstone and D. White.** The taxonomy of certain thiobacilli.
- M. I. Krichevsky and L. L. Love.** Efflux of macromolecules from washed *dictyostelium discoideum*.
- G. Colman and R. E. O. Williams.** The cell walls of streptococci.
- G. N. Festenstein, J. Lacey, F. A. Skinner, P. A. Jenkins and J. Pepys.** Self-heating of hay and grain in Dewar flasks and the development of farmer's lung antigens.
- S. Razin and the late R. C. Cleverdon.** Carotenoids and cholesterol in membranes of *Mycoplasma laidlawii*.
- Proceedings of the forty-fourth General Meeting of the Society for General Microbiology held at King's College, Aberdeen on 16, 17 and 18 September 1965.

The subscription rate for 1966 is £5 net per volume of 3 parts, single parts 45s. each, plus postage. Four volumes will be issued each year. Orders should be sent to

CAMBRIDGE UNIVERSITY PRESS
BENTLEY HOUSE, 200 EUSTON ROAD, LONDON, N.W.1

THE JOURNAL OF ECOLOGY

EDITOR: P. GREIG-SMITH

VOL. 53, No. 3

NOVEMBER 1965

- G. Jackson and J. S. Gartlan. The flora and fauna of Lolui Island, Lake Victoria. A study of vegetation, men and monkeys.
- S. M. Haslam. Ecological studies in the Breck Fens. I. Vegetation in relation to habitat.
- J. P. Grime and D. W. Jeffrey. Seedling establishment in vertical gradients of sunlight.
- D. McC. Ramsay and P. N. de Leeuw. An analysis of Nigerian savanna. III. The vegetation of the Middle Gongola region by soil parent materials.
- D. McC. Ramsay and P. N. de Leeuw. An analysis of Nigerian savanna. IV. Ordination of vegetation developed on different parent materials.
- E. W. Beals. The remnant cedar forests of Lebanon.
- H. C. Duthie. Some observations on the ecology of desmids.
- P. S. Ramakrishnan. Studies on edaphic ecotypes in *Euphorbia thymifolia* L. II. Growth performance, mineral uptake and inter-ecotypic competition.
- M. Kassar and W. A. Girgis. Habitat and plant communities in the Egyptian desert. VI. The units of a desert ecosystem.
- A. J. Kayll and C. H. Gimingham. Vegetative regeneration of *Calluna vulgaris* after fire.
- A. J. Willis. The influence of mineral nutrients on the growth of *Ammophila arenaria*.
- R. S. Clymo. Experiments on breakdown of *Sphagnum* in two bogs.
- S. A. Cook. Population regulation of *Eschscholzia californica* by competition and edaphic conditions.
- M. L. Luff. The morphology and microclimate of *Dactylis glomerata* tussocks.
- E. H. Chater. Ecological aspects of the dwarf brown form of *Spartina* in the Dovey estuary.
- J. C. E. Hubbard. *Spartina* marshes in Southern England. VI. Pattern of invasion in Poole Harbour.
- Reviews.

The Subscription price per volume of 3 parts is 130s. net, single parts 50s. net

BLACKWELL SCIENTIFIC PUBLICATIONS LTD.
24-25 BROAD STREET · OXFORD

THE JOURNAL OF ANIMAL ECOLOGY

VOL. 35, No. 1

EDITORS: O. W. RICHARDS and J. B. CRAGG

FEBRUARY 1966

- H. N. Southern. Distribution of bridled guillemots in east Scotland over eight years.
- R. O. Brinkhurst. Population dynamics of the large pond-skater *Gerris najas* Degeer (Hemiptera-Heteroptera).
- R. A. Beaver. The development and expression of population tables for the bark beetle *Scolytus scolytus* (F.).
- J. A. Gibb. Tit predation and the abundance of *Ernarmonia conicolana* (Heyl.) on Weeting Heath, Norfolk, 1962-63.
- J. S. Gray. The response of *Protodrilus symbioticus* (Giard) (Archiannelida) to light.
- M. P. Hassell. Evaluation of parasite or predator responses.
- J. Green. Seasonal variation in egg production by Cladocera.
- A. F. G. Dixon. The effect of population density and nutritive status of the host on the summer reproductive activity of the sycamore aphid, *Drepanosiphum platanoides* (Schr.).
- J. A. Kitching, Louise Muntz and F. J. Ebling. The ecology of Lough Ine. XV. The ecological significance of shell and body forms in *Nucella*.
- W. W. Murdoch. Aspects of the population dynamics of some marsh Carabidae.
- J. R. Parnell. Observations on the population fluctuations and life-histories of the beetles *Bruchidius ater* (Bruchidae) and *Apion fuscirostre* (Curculionidae) on broom (*Sarothamnus scoparius*).
- M. L. Luff. The abundance and diversity of the beetle fauna of grass tussocks.
- E. Naylor and I. Haahtela. Habitat preferences and inter-species within the superspecies *Jaera albifrons* Leach (Crustacea: Isopoda).
- O. P. Pearson. The prey of carnivores during one cycle of mouse abundance.
- E. E. Sandison and M. B. Hill. The distribution of *Balanus pallidus stutsburi* Darwin, *Gryphaea gasar* ((Adanson) Dautzenberg), *Mercierella enigmatica* Fauvel and *Hydroides uncinata* (Philippi) in relation to salinity in Lagos Harbour and adjacent creeks.
- Reviews.

Subscription price 126s. per volume of three parts (single parts 50s. each)

BLACKWELL SCIENTIFIC PUBLICATIONS LTD.
24-25 BROAD STREET · OXFORD

PROCEEDINGS OF THE MALACOLOGICAL SOCIETY OF LONDON

Vol. 36, Part 6, December 1965

£1. 5s. net, or \$4 U.S.

CONTENTS

- A. Graham.** The buccal mass of ianthinid prosobranchs.
P. S. Maitland. Notes on the biology of *Ancylus fluviatilis* in the River Endrick, Scotland.
K. J. Boss and A. S. Merrill. Degree of host specificity in two species of *Odostomia* (Pyramidellidae; Gastropoda).
D. Curry. The English Palaeogene pteropods.
Accounts for the year ended 31 December 1964.
List of Members.

Annual subscription (three parts) 60s. (\$10) post free.

BLACKWELL SCIENTIFIC PUBLICATIONS LTD.

24-25 Broad St., Oxford

Journal of CELL SCIENCE

Formerly The Quarterly Journal of Microscopical Science

The *Journal of Cell Science* is devoted to all aspects of the study of cells. The scope of the journal is wide, and papers dealing with the entire range of investigations of cell organization, including accounts of advances in the relevant techniques, will be acceptable. Thus, in addition to studies of the structure and functions of plant and animal cells and their extra-cellular products (for example, cell walls, cuticles), papers will be published on such topics as cell growth and division, cell movements and interactions, and cell genetics. Contributions concerned with aspects of morphogenesis at the cellular and subcellular levels will also be acceptable. Studies of the organization of micro-organisms will be welcomed, as will papers dealing with the study of viruses, in so far as they are relevant to an understanding of cell organization (for example, those dealing with cell virus interactions). Cytochemical papers will be acceptable, but histochemical work, in which the emphasis is on the localization of substances at the tissue level, will not ordinarily be included. Occasional review articles will be published.

Subscriptions: £8 per volume of 4 parts, post free; single parts 50s. postage extra. Copies may be ordered from your bookseller, or direct from the publishers:

CAMBRIDGE UNIVERSITY PRESS

Bentley House, 200 Euston Road, London, N.W. 1

FULL PARTICULARS OF THE

JOURNALS

PUBLISHED BY THE

CAMBRIDGE
UNIVERSITY PRESS

MAY BE HAD FROM

THE MANAGER
CAMBRIDGE UNIVERSITY PRESS
BENTLEY HOUSE
200 EUSTON ROAD
LONDON, N.W.1

Oceanography and Marine Biology

Edited by HAROLD BARNES
(VOLUME THREE)

This third volume follows closely the objects and styles of the earlier volumes. It contains eleven reviews covering the following subjects: Waves, Carbon Dioxide System in Sea Water, Exchange of Chemical Substances between Air and Sea, Determination of Phosphorus in Sea Water, Disposal of Waste in the Marine Environment and Pollution of the Sea, Chaetognaths, Conditions for the Existence of Life on the Abyssal Sea Floor, Endocrinology and the Reproductive Biology of Polychaetes, Endocrine Physiology of Fishes, Oceanography and the Ecology of Tunas and the Biology of the Northeast Atlantic Herring Population. 84s.

Prospectus available on request

ALLEN & UNWIN
40 MUSEUM STREET, W.C.1

THE JOURNAL OF EXPERIMENTAL BIOLOGY

Edited by SIR VINCENT WIGGLESWORTH and J. A. RAMSAY

Vol. 43, No. 3

30s. net

December 1965

WILSON, D. M. Proprioceptive leg reflexes in cockroaches.

HARKER, JANET E. The effect of photoperiod on the developmental rate of *Drosophila* pupae.

COLES, G. C. Haemolymph proteins and yolk formation in *Rhodnius prolixus* Stal.

BROWNING, T. O. Observations on the absorption of water, diapause and embryogenesis in the eggs of the cricket *Teleogryllus commodus* (Walker).

TREHERNE, J. E. and SMITH, D. S. The metabolism of acetylcholine in the intact central nervous system of an insect (*Periplaneta Americana* L.).

DEFORREST MELLON, JR. Nerve pathways and reflex siphon withdrawal in the surf clam.

CROMPTON, D. W. T., SHRIMPTON, D. H. and SILVER, I. A. Measurements of the oxygen tension in the lumen of the small intestine of the domestic duck.

SHELTON, G. and JONES, D. R. Pressure and volume relationships in the ventricle, conus and arterial arches of the frog heart.

KENNEDY, J. S. Co-ordination of successive activities in an aphid. Reciprocal effects of settling on flight.

BERRIDGE, M. J. The physiology of excretion in the cotton stainer, *Dysdercus fasciatus* Signoret. I. Anatomy, water excretion and osmoregulation.

BERRIDGE, M. J. The physiology of excretion in the cotton stainer, *Dysdercus fasciatus* Signoret. II. Inorganic excretion and ionic regulation.

BERRIDGE, M. J. The physiology of excretion in the cotton stainer, *Dysdercus fasciatus* Signoret. III. Nitrogen excretion and excretory metabolism.

WELLS, M. J., FREEMAN, N. H. and ASHBURNER, M. Some experiments on the chemotactile sense of octopuses.

WELLS, M. J. and YOUNG, J. Z. Split-brain preparations and touch learning in the octopus.

YOUNG, J. Z. The nervous pathways for poisoning, eating and learning in *Octopus*.

YOUNG, J. Z. Influence of previous preferences on the memory of *Octopus vulgaris* after removal of the vertical lobe.

Subscription for 1966, 80s. per volume of 3 parts, 2 volumes a year. Single parts 30s. net

Orders may be placed through your bookseller or direct with the

Cambridge University Press, Bentley House, 200 Euston Road, London, N.W.1