

Original Article

Hybrid intensity-modulated radiation therapy (IMRT) simultaneous integrated boost (SIB) technique versus three-dimensional (3D) conformal radiotherapy with SIB for breast radiotherapy: a planning comparison

Shayne K. Smith, Reuben P. Estoesta, Jaraad A. Kader, Darren Martin, Elizabeth R. Claridge-Mackonis, Joanne M. Toohey, Susan L. Carroll

Department of Radiation Oncology, Chris O'Brien Lifehouse, Camperdown, NSW, Australia

(Received 5 January 2016; revised 31 January 2016; accepted 1 February 2016; first published online 8 March 2016)

Abstract

Aim: This study aims to compare conventional simultaneous integrated boost (SIB) planning technique with a hybrid SIB intensity-modulated radiation therapy (IMRT) technique with varying open tangent to IMRT field dose ratios. Furthermore, we investigated which of the dose ratios proves the most favourable as a class solution across a sample.

Methods: In total, 15 patients with conventional SIB treatment plans were re-planned with hybrid SIB IMRT technique using three differing open field:IMRT dose ratios, that is, 80:20, 70:30 and 60:40. Plans were compared using dosimetric comparison of organs at risk (OARs) and homogeneity and conformity indexes across target structures.

Results: All hybrid plans reduced dose maximums and showed a reduction of high doses to both lungs but increased lower doses, that is, V5, with similar results discovered for the heart. Contralateral breast dose was shown to decrease V5 and V1 measures by hybrid arms, whereas increasing the V2. Left anterior descending artery dose and non-irradiated structures were reduced by all hybrid arms. The homogeneity and conformity increased across all hybrid arms. Qualitative assessment of all plans also favoured hybrid plans.

Findings: Hybrid plans produced superior dose conformity, homogeneity, reduced dose maximums and showed an improvement in most OAR parameters. The 70:30 hybrid technique exhibited greater benefits as a class solution to the sample than conventional plans due to superior dose conformity and homogeneity to target volumes.

Keywords: breast; hybrid; planning; radiotherapy; simultaneously integrated boost (SIB)

Correspondence to: Shayne K. Smith, Department of Radiation Oncology, Chris O'Brien Lifehouse, Missenden Rd, Camperdown, NSW 2050, Australia. Tel: +61 0285 140 023. Fax: 61 9383 1027. E-mail: shayne.smith@lh.org.au

INTRODUCTION

Breast-conserving surgery in conjunction with radiotherapy is the standard of care for treating early-stage breast cancer patients.^{1–3} Traditionally, conventional breast irradiation consisted of a beam arrangement using two opposing tangential beams, allowing adequate coverage of the breast tissue while minimising the dose to critical structures (e.g., ipsilateral lung, contralateral breast and heart). Physical or dynamic wedges, field-in-field (FiF) or direct fields are frequently added to modify these tangential beams to develop the most homogenous plan to compensate for the significant contour changes.⁴ However, this requires a manual trial and error method and may be very time consuming.^{1,5}

Intensity-modulated radiation therapy (IMRT) has emerged as a leading technique in the treatment of many cancer sites.^{6,7} Recent randomised trials^{8,9} and other studies^{10,11} have reported that IMRT for breast cancer can improve the dose homogeneity and decrease acute skin toxicity and dose to the contralateral breast when compared with the traditional three-dimensional (3D) tangential method. Unfortunately, IMRT can increase the volume of low dose received to the organs at risk (OARs) and healthy tissue.^{12–15}

A more recent alternative to 3D conventional or IMRT treatment is a hybrid approach, combining the two techniques with the aim to create a more optimised dosimetric outcome. This technique involves a certain percentage of the prescription dose (e.g., 70%) delivered via tangential beams with no beam modifiers. The remaining dose (e.g., 30% of prescription dose) is delivered through a number of IMRT fields that may be tangential with or without the addition of beams directed to the surgical cavity. The IMRT plan is optimised in order to achieve increased homogeneity and superior target volume coverage than is achievable with tangential fields alone. Several studies have investigated the effectiveness of this technique compared with the 3D conformal method. Ahunbay et al.¹⁶ retrospectively analysed 15 patients comparing the hybrid technique with the 3D conformal and IMRT techniques and found the hybrid

technique to be equal to, if not better than the other approaches with a higher uniformity index across the target area, a lower lung dose, reduced monitor units compared with IMRT and reduced planning time by ~75% compared with 3D conformal. Descovich et al.¹⁷ performed a similar study and discovered that the hybrid technique reduced the volume of the breast receiving hot spots of >105% total dose, provided more homogenous dose coverage of the tumour cavity, was less dependent on planner experience and required less planning time than the other two techniques. Many other studies have been performed investigating other variations of the hybrid technique and proved that it is comparable, if not superior, with 3D conformal or IMRT planning alone.^{18–20} There is, however, limited literature on the use of the optimal ratio of static tangent field dose compared with IMRT field dose for hybrid techniques.

This study aims to compare the conventional simultaneous integrated boost (SIB) planning technique with a hybrid SIB IMRT technique with varying open tangent to IMRT field dose ratios. The quality of the plans will be assessed by quantifying the target volume coverage, dose homogeneity and conformity and dose to predetermined OARs. Furthermore, we wish to investigate which of the dose ratios proves the most favourable as a class solution across a sample.

METHODS

Study design

This study was conducted retrospectively with ten patients with left-sided breast cancer and five patients with right-sided breast cancer requiring treatment of the whole breast and deeply located tumour cavity with no nodal involvement. All patients had completed treatment with conventional SIB treatment in the supine position, conforming to the standard department protocol. More left-sided patients were included in order to increase the statistical power for the cardiac structure indices. Three hybrid plans were created retrospectively on the same dataset using three varying dose ratios (open field:IMRT). For each plan, all patients received 50.4 Gy to the whole breast with an additional 14 Gy to the

tumour cavity over 28 fractions using 6 MV only. This study only evaluated this one fractionation schedule that is used for selected high-risk patients.²¹ The plans were compared and assessed using dose delivered to OARs and dose conformity.

Volume delineation

Dose structures/OARs

For each of the datasets, the ipsilateral lung, both lungs as a single structure, heart and left anterior descending artery (LAD) (left-sided cases) had been contoured by a radiation oncologist (RO) for planning using the conventional tangent technique. For the purposes of this study, the contralateral breast was also contoured. A structure was created consisting of the non-irradiated volume and labelled as 'Dose Ring', that is, volume of the body not including the planning target volume (PTV). Interobserver variation was limited by having one planner checking and approving all structures.

Target volumes

The clinical target volume boost (CTV_{boost}) was volumed by the RO, using the usual clinical parameters such as surgical clips, ultrasound, mammograms and/or and histopathological reports. The PTV boost (PTV_{boost}) was created by expanding the CTV_{boost} by 0.5 mm in all directions but clipped to ensure it was 0.5 mm from the skin anteriorly and abutted the pectoralis major muscle posteriorly.

A breast PTV was created by the RO, using clinical and computed tomography (CT) imaging parameters. This volume was determined using a combination of placing radioopaque wire around the palpable breast tissue and CT contouring.²² A reduced PTV structure, PTV evaluation (PTV_{eval}), was created from the PTV for the purpose of clinical evaluation and IMRT optimisation. This PTV_{eval} volume was created by reducing the PTV by 2 cm superiorly and inferiorly and 0.8 cm anteriorly and posteriorly, with the further deletion of all lung, heart, bowel, liver, ribs and intercostal muscle from the volume (Figure 1). This better represented a volume of breast tissue void of OARs, whereas the reduction anteriorly avoided a region of high dose at the skin edge. The PTV_{eval} also excluded

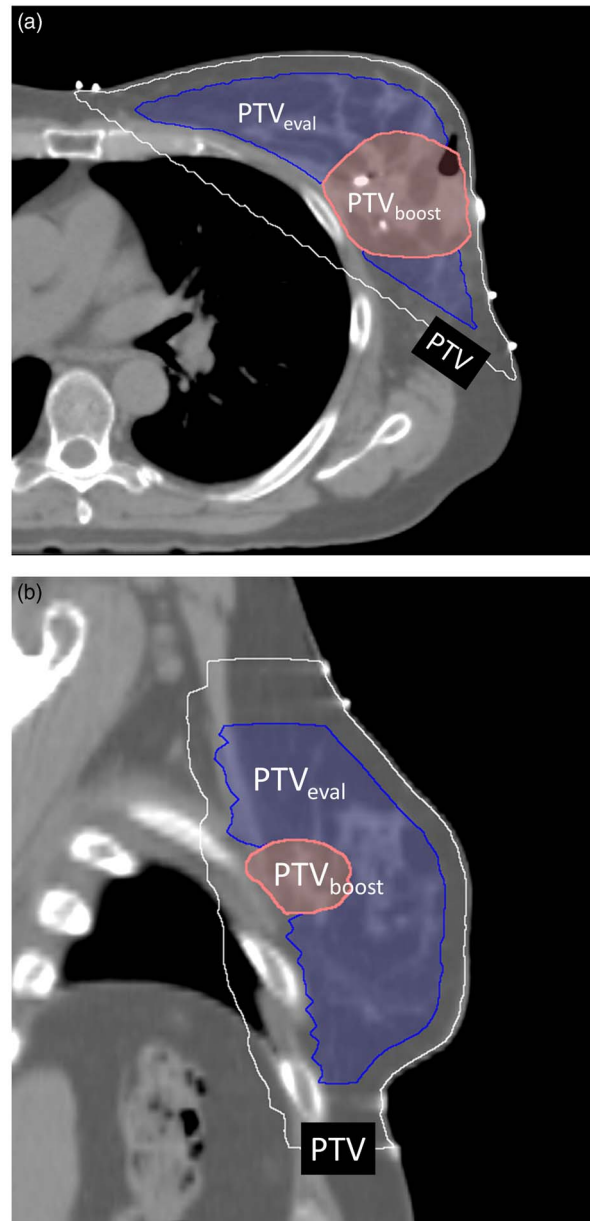


Figure 1. Representation in transverse (a) and sagittal (b) of planning target volume boost (PTV_{boost}) and PTV evaluation (PTV_{eval}) as a reduction of the PTV to represent a target volume void of organs at risk.

the PTV_{boost} by use of Boolean operators to allow IMRT optimisation and appropriate dose-volume histogram (DVH) evaluation.

Treatment planning

Each plan was created and assessed using Eclipse software (version 11, Varian Medical Systems).

Conventional SIB breast treatment

Before this study, conventional tangential plans were the departmental standard treatment for early breast cancer, with opposing tangential fields to cover the PTV. A SIB photon boost technique was used for deeply positioned boost volumes where a sequential electron boost was not suitable. For this technique, individual plans were developed employing physical wedges (15, 30, 45 and 60°) and varied beam weighting to achieve a homogeneous plan. The planning protocol requires fields to have multileaf collimation (MLCs) on the posterior aspect to limit lung dose and 2 cm overshoot anteriorly to account for respiratory motion. FiF were used as required, to further ensure dose homogeneity and target coverage. Finally, two photon beams with a 0.7 cm MLC margin around the PTV_{boost} (positioned at the planner's discretion using visual and statistical dose assessment) were used to achieve total dose (TD) to the volume. Additional dynamic wedging was also used to ensure target coverage when required.

Both plans shared the same isocentre, allowing for simultaneous treatment of all volumes. Two normalisation points were also required, with one at the central slice of the PTV and another in the centre of the PTV_{boost}.

Hybrid technique

The hybrid technique consisted of a two-step process resulting in a six-field plan in all instances. The first plan used two tangential fields with MLCs conforming to the PTV along the posterior edge and including 2 cm of overshoot anteriorly, reflecting a conventional tangent plan. A portion of the total breast dose, that is, 60, 70 or 80%, was calculated to a reference point as per ICRU 50 guidelines, and weightings were used to provide an even distribution of dose across the whole breast. No additional fields or beam modifiers were used in this plan.

A second IMRT plan was created at the same isocentre as the conventional plan and comprised of four fields; two tangential fields at the same gantry angle as the original two tangents and two fields angled to best access the boost cavity. The two non-tangential fields were dedicated to treat

the boost cavity by locking the jaws around the PTV_{boost} during the optimisation process. The IMRT plan was optimised using a standard optimisation template employing sliding window dynamic IMRT with Eclipse optimisation software to achieve dose constraints and utilise avoidance volumes to reduce undesirable excess dose. A basic level of planning experience was simulated by limiting optimisation calculations and use of avoidance structures to two. The plan was dosed with the remaining, that is, 40, 30 or 20%, of the total breast dose and 14 Gy additionally for the boost cavity.

The sum of the two plans was assessed against departmental protocol unto which all plans were compared, using visual assessment, maximum and minimum doses and DVH for target volumes and critical structures. This process was repeated using a total of three different dose ratios between the two plans (Table 1) in order to identify possible clinical benefits.

Plan analysis

Each plan was evaluated with plans considered acceptable when a minimum of 90%, of 50.4 Gy, covered the PTV_{eval} and 95%, of 64.4 Gy, covered the PTV_{boost}. The maximum point dose was kept below 110% of the prescribed dose to each of the PTVs. Although all plans were deemed clinically acceptable by the RO, some conventional plans did not achieve 90% coverage of the PTV_{eval}. Therefore, in order to accurately compare the dose with OARs and target coverage all plans were normalised to achieve a minimum 90% coverage to the PTV_{eval}.

The dosimetric data used for plan comparison were the mean, maximum and V20 dose for the ipsilateral lung and total lungs. The heart mean,

Table 1. Dose ratios for each hybrid arm

	60:40 Arm (Gy)	70:30 Arm (Gy)	80:20 Arm (Gy)
Open plan	30.4	35.4	40.4
IMRT plan (with boost)	34	29	24

Abbreviation: IMRT, intensity-modulated radiation therapy.

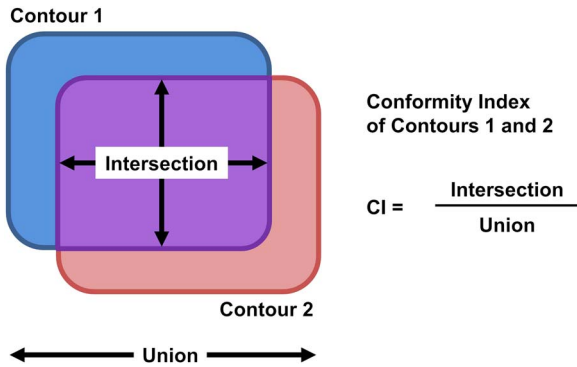


Figure 2. Equation for the conformity index (CI) used in the study. Contour 1 represents the planning target volume boost and Contour 2 represents the 95% isodose structure (61.18 Gy).

maximum, V30, V25 and V5 dose were also measured for left-sided patients as well as the LAD mean, maximum and V30 dose. In addition to this, the mean, maximum, V1, V2 and V5 doses were collected for the contralateral breast.

The conformity index (CI) for the PTV_{boost} was calculated using absolute volumes quantified by the treatment planning system. In this study, the CI is defined as the ratio of the intersection and the union of the PTV_{boost} and the 95% dose structure, where an outcome of 1 represents identical structures and 0 represents no overlap at all²³ (Figure 2). As the CI cannot give any information regarding plan heterogeneity²⁴ other evaluation tools were also used, namely assessment of the dose to OARs and the heterogeneity index (HI).

The HI indicates the ratio between the maximum and minimum dose within the volume, calculated using the formula $(D_{\text{max}} - D_{\text{min}})/D_{\text{mean}}$.²⁵ In this scenario, a lower value indicates more homogeneity and a higher represents undesirable inhomogeneity. In this study, the HI is applied only to the PTV_{boost} volume due to the higher dose received at the interface of target volumes.

Average difference in dose–volume parameters between the cohorts were tested with a Student's *t*-test. Due to multiple pairwise comparisons, a Holm-Bonferroni correction was applied with the level statistical significance set at $p < 0.02$.

RESULTS

All plans created, both conventional and in the hybrid arm were deemed qualitatively acceptable according to department criteria/protocol and clinical assessment.

Target

The dose to the PTV_{eval} was considerably lower across all three hybrid arms compared with the conventional plan. The point maximum decreased by an average of at least 2 Gy using the hybrid technique, whereas the mean dose was brought down from 54.0 Gy to, 51.8 Gy, 51.9 Gy and 51.6 Gy in the 60:40, 70:30 and the 80:20 hybrid plan, respectively. These plans were cooler than the conventional arm while delivering a mean dose more aligned with the ICRU 83 guidelines prescribed dose reporting, that is, 50.4 Gy.²⁶ The volume of PTV_{eval} receiving 110% of prescribed dose (i.e., 55.44 Gy) reduced considerably in the hybrid arms from 31.3 to 9.3, 10 and 9.9% for the 60:40, 70:30 and 80:20 arms, respectively.

Dose to the PTV_{boost} volumes remained similar between techniques (Table 2). It was notable that the mean doses for the PTV_{boost} were ideal for all hybrid plans at 64.3 Gy (60:40), 64.5 Gy (70:30) and 64.3 Gy (80:20) for a prescribed dose of 64.4 Gy when compared with 63.9 Gy for the conventional technique. Although the minimum dose to the PTV_{boost} increased across all hybrid arms and average maximums remained alike these results did not show statistical significance compared with the conventional arm.

Conformity, to the PTV_{boost} , for all hybrid arms was considered statistically significant with the 70:30 group proving most conformal with an average 0.81 CI as opposed to 0.26 for the conventional technique (Table 2). The homogeneity index was lower in all hybrid arms at 0.15 compared with 0.18 in the conventional arm. However, this result was not statistically significant. Conformity and homogeneity index were not evaluable for PTV_{eval} due to shape irregularity caused by the removal of the PTV_{boost} structure and therefore did not conform to an isodose line. Coverage of the

Table 2. The comparable target dosimetric parameters for conventional treatment and hybrid arms

Target structure	Conventional	Hybrid 60:40	Hybrid 70:30	Hybrid 80:20
PTV _{eval}				
Minimum	45.6 ± 0.6	43.3 ± 1.7 ^a	43.7 ± 1.8 ^a	45.0 ± 1.9 ^a
Mean	54.0 ± 1.5	51.8 ± 0.9 ^a	51.8 ± 0.9 ^a	51.6 ± 1.0 ^a
Maximum	67.1 ± 1.0	64.5 ± 1.5 ^a	65.2 ± 1.2 ^a	64.5 ± 1.6
V ₅₅₋₄₄ ^b	31.3 ± 11.0	9.3 ± 4.8 ^a	10.0 ± 4.7 ^a	9.9 ± 4.7 ^a
PTV _{boost}				
Minimum	55.7 ± 9.8	58.1 ± 1.6	57.7 ± 3.8	58.4 ± 1.6
Mean	63.9 ± 1.0	64.4 ± 1.3	64.5 ± 1.3	64.3 ± 1.3
Maximum	67.1 ± 0.9	67.9 ± 1.4	67.5 ± 1.3	67.8 ± 1.3
CI	0.26 ± 0.05	0.45 ± 0.02 ^a	0.81 ± 0.06	0.46 ± 0.04 ^a
HI	0.18 ± 0.16	0.15 ± 0.02	0.15 ± 0.05	0.15 ± 0.02

Notes: Values are mean ± 1 SD.

^aStudent's *t*-tests (*p* < 0.02), conventional versus hybrid.

^bV₅₅₋₄₄: 110% of prescribed dose to the PTV_{eval}.

Abbreviations: PTV_{eval}, planning target volume evaluation; PTV_{boost}, planning target volume boost; CI, conformity index; HI, heterogeneity index.

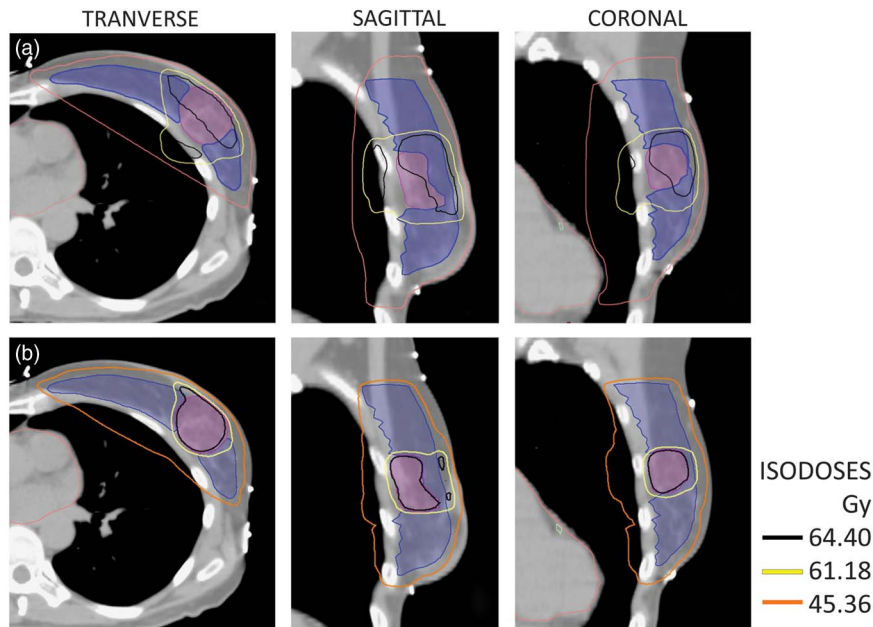


Figure 3. (a) Series represents dose contours from a conventional plan; (b) series represent dose from a hybrid plan with ratio 70:30.

PTV_{eval} was instead analysed using the DVH and the plans were qualitatively assessed for conformity. Qualitative assessment of all patients also favoured the hybrid arms in terms of conformity to the PTV_{eval} (Figure 3).

OARs

Dose to both lungs was reduced in all hybrid plans compared with the conventional plan in all measures (Table 3). The hybrid 60:40 and 70:30 significantly improved the V20 lung dose

measure. The dose to the ipsilateral lung was reduced in all measures with the use of the hybrid plans except for an increase of 0.3% for the hybrid 60:40 V5.

Cardiac doses displayed in the table represent the ten left-sided patients only to obtain more significant and categorical data. The LAD received lower mean and maximum doses for all hybrid techniques, which was statistically significant compared with the conventional plans. The hybrid 60:40 showed the largest reduction in

Table 3. The comparable organ at risk (OAR) dosimetric parameters for conventional treatment and hybrid arms

OARs	Conventional	Hybrid 60:40	Hybrid 70:30	Hybrid 80:20
Lungs				
Both lungs				
Mean	4.0 ± 1.5 Gy	3.3 ± 0.8 Gy	3.4 ± 0.9 Gy	3.2 ± 1.0 Gy
V20	4.9 ± 1.7%	4.5 ± 1.6% ^a	4.62 ± 1.6% ^a	4.5 ± 2.4%
V5	15.0 ± 11.4%	12.7 ± 5.0%	14.0 ± 5.1%	13 ± 4.9%
Ipsilateral lung				
Mean	7.4 ± 2.2 Gy	6.4 ± 1.6 Gy	6.6 ± 1.5 Gy	6.1 ± 1.9 Gy
V20	10.7 ± 3.2%	9.3 ± 3.4%	9.5 ± 1.6%	8.5 ± 4.1%
V5	28.3 ± 16.0%	28.6 ± 10.8%	28.2 ± 5.1%	26.3 ± 8.4%
Cardiac				
Heart (left sided only)				
Mean	3.4 ± 0.6 Gy	3.5 ± 1.6 Gy	3.5 ± 1.5 Gy	3.2 ± 0.8 Gy
Maximum	52.0 ± 3.7 Gy	46.0 ± 4.4 Gy ^a	46.4 ± 3.8 Gy ^a	43.2 ± 1.9 Gy
V30	2.0 ± 1.6%	1.3 ± 1.3% ^a	1.5 ± 1.4% ^a	1.7 ± 1.6% ^a
V25 (<10%)	2.3 ± 1.7%	1.8 ± 1.6% ^a	1.9 ± 1.6% ^a	1.9 ± 1.8% ^a
V5	12.3 ± 7.5%	21.5 ± 15.0%	20.4 ± 13.3%	17.5 ± 5.4%
Left anterior descending artery (left sided only)				
Mean	15.6 ± 5.4 Gy	13.1 ± 4.6 Gy ^a	13.4 ± 4.6 Gy ^a	13.8 ± 4.9 Gy ^a
Maximum	34.1 ± 11.5 Gy	24.7 ± 8.7 Gy ^a	26.0 ± 8.6 Gy ^a	25.1 ± 12.1 Gy ^a
V30	9.3 ± 12.6%	4.7 ± 13.0%	4.4 ± 11.4%	5.9 ± 11.9%
Contralateral breast				
Mean	0.8 ± 0.5 Gy	0.7 ± 0.4 Gy	0.7 ± 0.4 Gy	0.6 ± 0.4 Gy
Maximum	4.9 ± 5.9 Gy	4.9 ± 2.3 Gy	5.1 ± 5.7 Gy ^a	4.8 ± 2.6 Gy
V5	0.16 ± 0.63%	0.11 ± 0.31%	0.03 ± 0.09%	0.02 ± 0.05%
V2	9.1 ± 14.4%	12.6 ± 11.4%	11.7 ± 10.4%	9.2 ± 8.6%
V1	24.5 ± 23.7%	24 ± 16.2%	23.0 ± 16.2%	21.2 ± 15%
Dose Ring				
Maximum	20.7 ± 5.6	15.9 ± 3.4 ^a	16.5 ± 3.1 ^a	17.5 ± 4.3 ^a

Notes: Values are mean ± 1SD.

^aStudent's *t*-tests ($p < 0.02$), conventional versus hybrid.

the maximum LAD dose with an average of 9.3 Gy. The V30 for the LAD was also reduced across all hybrid arms though not statistically significant (Table 3).

Although the hybrid plans showed a significant reduction in dose for the V30 and V25 heart indices, there was a marked increase in the V5 and mean heart doses, though these were not statistically significant. The hybrid plans reduced the maximum dose to the heart although in the 80:20 hybrid arm this was not statistically significant.

For the contralateral breast, the mean dose, V5 and V1 were reduced in all the hybrid arms but did not show statistical significance. The average increase in the maximum dose of 0.79 Gy observed in the hybrid 70:30 was statistically significant and there was an increase in the V2 measure in all hybrid arms (Table 3).

The non-irradiated volume (Dose Ring) received a significantly lower dose with a reduction of at least 3 Gy in maximum dose for all hybrid plans.

DISCUSSION

Our aim was to directly compare a conventional SIB breast treatment technique to a developed hybrid technique based on dose to OARs, target coverage and dose homogeneity. Results have successfully shown that all the hybrid arms are clinically and statistically comparable as a class solution to the conventional arm in this sample of 15 patients.

The hybrid arm results concerning ipsilateral lung dose parameters were on average comparable, if not lower, than the conventional arm with doses for all plans well within recommended QUANTEC standards.²⁷ Much of the

available hybrid literature examines dose to the lungs based on treating the whole breast to a single dose with no boost volume.^{17–19,28,29} Due to the beam angles chosen for this hybrid technique and escalated PTV_{boost} dose, it is difficult to compare these results with other studies. Ipsilateral lung dose in the conventional plans is also affected by the choice of boost-targeting beam angles, which may increase dose to the lung to achieve TD to a deeply located PTV_{boost}. This is likely due to the conventional plan lacking the ability to limit dose to structures that is provided by the IMRT portion of the hybrid plan. Dramatic reduction of high doses to the lung evident in the hybrid plans can be attributed to the inclusion of IMRT, though conversely the IMRT also creates additional scatter thereby increasing low-dose regions as reported by other studies.^{4,13,14} Furthermore, beam angles chosen in the hybrid plans to treat the boost contribute to a higher V5. Further investigation into this hybrid technique to reduce V5 doses could involve selection of angles that reduce exit to the ipsilateral lung. Within the hybrid arm, all ratios reduced dose to all lung parameters compared with the conventional plans, apart from the V5 ipsilateral measure of which the 60:40 plan showed the only increase in dose.

The recommended dose limitations to cardiac organs are debatable as the dose–response relationship is difficult to assess.³⁰ Nevertheless, several studies have produced evidence that the risk of major coronary event increases by 7.4%/every additional increase of 1 Gy³¹ to the mean dose to the heart^{32–34} and LAD.^{35,36}

Heart and LAD doses showed significant decrease in maximum and mean measures across all hybrid arms compared with the 3D conformal radiotherapy (3DCRT) arm. However, conversely all hybrid arms showed an increase in V5 measures of the heart compared with 3DCRT. The ability of IMRT to use the heart as a dose-limiting structure coincides with reduced maximum and mean doses. The increase in lower dose regions compared with 3DCRT technique is consistent with other IMRT^{4,13,15,37} and hybrid breast studies.^{19,28} The increase in V5 may again be partially contributed to by the selection

of boost field angles exiting through the heart. Other than optimisation of beams and shielding, the utilisation of breath-hold techniques is another technique to reduce the dose to the heart in the tangential beam path.^{38–40}

The use of physical wedges used on the lateral tangent in conventional planning, is associated with a three-fold increase in scattered dose compared with virtual wedges or hybrid IMRT.^{41,42} This is observed in the contralateral breast parameters with the mean, V5 and V1 doses showing a decrease in the hybrid arms. The increase in V2 in the hybrid arms in the contralateral breast can be attributed to the absence of IMRT objectives to control for these lower doses. Furthermore, the lateral beam angle selected to treat the PTV_{boost} in the hybrid arms could be optimised to avoid exit dose through the contralateral breast. If these considerations were applied, the dose to the contralateral breast could be further reduced.

The PTV_{eval} minimum coverage was considered acceptable with lower doses recorded for all parameters in hybrid arms compared with conventional, though was still within acceptable limits. All PTV_{eval} mean (D50) doses were reported higher than the prescribed dose in the hybrid arms by 1.4 Gy, 1.4 Gy and 1.2 Gy (60:40, 70:30 and 80:20, respectively) compared with 3.6 Gy higher for the 3DCRT technique. Higher doses are considered acceptable due to the proximity of the boost region to the PTV_{eval} as the dose gradient increases rapidly at the interface of the two volumes. Volumes of D110% and higher across target volumes are undesirable, having been shown to increase skin toxicity^{11,43–46} and cause poor cosmetic outcomes.^{45,47} The hybrid arms showed a reduction (21.4%) in volume over the conventional arm (Table 2), whereas there were no significant changes in the volume of D110% of prescription dose between the hybrid arms.

Maximum PTV_{boost} doses were similar across both techniques but results showed far greater dose conformity to the volume in the hybrid arms over the conventional. Among the hybrid arms, the 70:30 arm showed a statistically significant CI of 0.81 compared with 0.45, 0.46 and

0.26 for the 60:40, 70:30 and 80:20 and conventional arms, respectively. As evident in other comparative studies,^{13,16,20,48–50} IMRT shows greater dose conformity to target structures with our results further reflected in comparative hybrid studies.^{17,18,28,51} When considering the dose homogeneity across the PTV_{boost}, the HI indicates that the hybrid technique creates a more homogeneous dose at 0.15 for all arms compared with 0.18 with the conventional plan. Although decreasing dose to OARs is important for reducing toxicity, increasing dose conformity and ensuring homogeneity across target volumes is fundamental in achieving the prescribed dose and increases the probability of reducing local recurrence.^{52–54} All the hybrid arms exhibit superiority over the conventional results when considering CI and HI, though the 70:30 ratio proves the optimal ratio, as a class solution, between the hybrid results.

LIMITATIONS

There is a consensus among the investigators that it was significantly quicker to achieve acceptable plans using the hybrid technique and is supported by other studies.^{18,19} It is assumed that treatment times would also be reduced, as staff would not be required to enter the room to add or change accessories.⁵¹ However, duration of individual plan development and treatment was not timed for conventional or hybrid plans. Finally, no further contouring or input would be required by the RO although additional quality assurance is required by medical physics initially when introducing any new technique.

We chose to use two SIB boost fields in this study for both conventional and hybrid plans. We noticed that in some cases these boost fields caused an increase in low dose to the heart, and lung. Future analysis of hybrid plans should include a comparison between one and two SIB boost fields with statistical analysis of dose conformity and V2 lung dose. Lung V2 was not considered for this study, however, this would create a greater depth of information. Furthermore, the use of one boost field rather than two, could allow comparative treatment for patients with superficial cavity sites, requiring electron treatment. The use of hybrid SIB treatment for

these patients would reduce the total number of treatments from 33 to 28 and allow increased patient throughput for the department for this high-risk patient group. In our department, the majority of patients are now treated with 70:30 ratio using only one boost field that gives excellent conformity and reduces scatter to OARs. To date, there have been no instances where the 70:30 hybrid ratio has not satisfied tolerances and targets and required use of a different ratio, however, superficially located tumours may still be treated with subsequent electron boosts. In this study, a class solution was identified regardless of patient factors such as separation, PTVboost location, size of PTVboost, etc.

Increasing patient numbers would facilitate an increase in the statistical power of this study, however, 15 patients with four plans per patient, was considered statistically acceptable providing significant results for a number of the dose parameters considered.

CONCLUSION

There is limited literature on the use of hybrid techniques to treat SIB, especially in comparison with hybrid or IMRT whole breast treatment (no boost). There are fewer publications still on the optimal ratio of static tangent field dose compared with IMRT field dose. This study shows significant improvement in most OAR parameters and increased dose conformity in all three hybrid arms. It is noted that the V5 for the heart and ipsilateral lung should be further investigated with the hybrid technique to further improve doses and the practitioner's clinical judgement should be used in all cases to prioritise risks of low-dose regions to OARs versus high-dose regions within the PTV. Overall, all hybrid plans exhibited greater benefits to the patient than the conventional plan. From this research, the optimal hybrid ratio as a class solution is the 70:30 due to increased conformity and homogeneity as other comparable parameters are not clinically significant between the three hybrid arms.

Acknowledgements

The authors would like to acknowledge May Whitaker and the Chris O'Brien Lifehouse.

Financial support

This research received no specific grant from any funding agency, commercial or not-for-profit sectors.

Conflicts of Interest

None.

Ethical Standards

This study is a retrospective analysis on radiotherapy plans which were not treated on any human or animal. This study meets all requirements as outlined in the *National Statement on Ethical Conduct in Human Research*. This compliance has been approved by the Human Research Ethics Review Committee (RPAH Zone), who have been accredited by the NSW Department of Health as a lead Human Research Ethics Committee under the model for single ethical and scientific review and is constituted and operates in accordance with the National Health and Medical Research Council's *National Statement on Ethical Conduct in Human Research* and the *CPMP/ICH Note for Guidance on Good Clinical Practice*. The reference protocol for this study is: 'Protocol No X14-0203 & LNR/14/RPAH/266—'Planning comparison of hybrid intensity-modulated radiation therapy (IMRT) simultaneous integrated boost (SIB) technique to 3D conformal radiotherapy tangents with SIB for breast radiotherapy at Lifehouse'.

References

1. Fisher B, Anderson S, Bryant J et al. Twenty-year follow-up of a randomised trial comparing total mastectomy, lumpectomy and lumpectomy plus irradiation for the treatment of invasive breast cancer. *N Engl J Med* 2002; 347: 1233–1241.
2. Veronesi U, Cascinelli N, Mariani L et al. Twenty-year follow-up of a randomised study comparing breast-conserving surgery with radical mastectomy for early breast cancer. *N Engl J Med* 2000; 347: 1227–1232.
3. Van Dongen JA, Voogd A C, Fentiman I S et al. Long term results of a randomised trial comparing breast-conserving therapy with mastectomy: European Organisation for Research and Treatment of Cancer 10,801 trial. *J Natl Cancer Inst* 2000; 92: 1143–1150.
4. Al-Rahbi Z S, Al Mandhari Z, Ravichandran R et al. Dosimetric comparison of intensity modulated radiotherapy isocentric field plans and field in field (FIF) forward plans in the treatment of breast cancer. *J Med Phys* 2013; 38: 22–29.
5. Trombetta M, Julian T B, Valakh V et al. Reduction in radiation-induced morbidity by use of an intercurrent boost in the management of early-stage breast cancer. *Int J Radiat Oncol Biol Phys* 2010; 77: 1303–1308.
6. Zelefsky M J, Fuks Z, Happersett L et al. Clinical experience with intensity modulated radiation therapy (IMRT) in prostate cancer. *Radiother Oncol* 2000; 55: 241–249.
7. Longobardi B, De Martin E, Fiorino C et al. Comparing 3DCRT and inversely optimised IMRT planning for head and neck cancer: equivalence between step-and-shoot and sliding window techniques. *Radiother Oncol* 2005; 77: 148–156.
8. Pignol J, Olivetto I, Rakovitch E et al. Phase III randomised study of intensity modulated radiation therapy versus standard wedging technique for adjuvant breast radiotherapy. *Int J Radiat Oncol Biol Phys* 2006; 66: 2085–2092.
9. Donovan E, Bleakley N, Denholm E et al. Randomised trial of standard 2D radiotherapy (RT) versus intensity modulated radiotherapy (IMRT) in patients prescribed breast radiotherapy. *Radiother Oncol* 2007; 82: 254–264.
10. Harsolia A, Kestin L, Grillis I et al. Intensity modulated radiotherapy results in significant decrease in clinical toxicities compared with conventional wedge-based breast radiotherapy. *Int J Radiat Oncol Biol Phys* 2007; 68: 1375–1380.
11. Freedman G M, Anderson P R, Li J et al. Intensity Modulated Radiation Therapy (IMRT) decreases acute skin toxicity for women receiving radiation for breast cancer. *Am J Clin Oncol* 2006; 29: 66–70.
12. Hall E J, Wu C-S. Radiation-induced second cancers: the impact of 3D-CRT and IMRT. *Int J Radiat Oncol Biol Phys* 2003; 56: 83–88.
13. Zhang F, Zheng M. Dosimetric evaluation of conventional radiotherapy, 3D conformal radiotherapy and direct machine parameter optimisation intensity-modulated radiotherapy for breast cancer after conservative surgery. *J Med Imaging Radiat Oncol* 2011; 55: 595–602.
14. Mansouri S, Naim A, Glaria L, Marsiglia H. Dosimetric evaluation of 3-D conformal and intensity-modulated radiotherapy for breast cancer after conservative surgery. *Asian Pac J of Cancer Prev* 2014; 15: 4727–4732.
15. Abeyaratne D. Can intensity modulated radiation therapy reduce cardiac dose in left-sided breast patients. *Radio-grapher* 2010; 57: 40–44.
16. Ahunbay E E, Chen G P, Thatcher S et al. Direct aperture optimisation-based intensity-modulated radiotherapy for whole breast irradiation. *Int J Radiat Oncol Biol Phys* 2007; 67: 1248–1258.
17. Descovich M, Fowble B, Bevan A, Schechter N, Park C, Xia P. Comparison between hybrid direct aperture optimised intensity-modulated radiotherapy and forward planning intensity-modulated radiotherapy for whole breast irradiation. *Int J Radiat Oncol Biol Phys* 2010; 76: 91–99.

18. Mayo C S, Urie M M, Fitzgerald T J. Hybrid IMRT plans—concurrently treating conventional and IMRT beams for improved breast irradiation and reduced planning time. *Int J Radiat Oncol Biol Phys* 2005; 61: 922–932.
19. Farace P, Zucca S, Solla I et al. Planning hybrid intensity modulated radiation therapy for whole-breast irradiation. *Int J Radiat Oncol Biol Phys* 2012; 84: e115–e122.
20. Peulen H, Hanbeukers B, Boersma L et al. Forward intensity-modulated radiotherapy planning in breast cancer to improve dose homogeneity: feasibility of class solutions. *Int J Radiat Oncol Biol Phys* 2012; 82: 394–400.
21. Hurkmans C W, Meijer G J, van Vliet-Vroegindewij C et al. High-dose simultaneously integrated breast boost using intensity-modulated radiotherapy and inverse optimisation. *Int J Radiat Oncol Biol Phys* 2006; 66: 923–930.
22. Offersen B V, Boersma L J, Kirkove C et al. ESTRO consensus guideline on target volume delineation for elective radiation therapy of early stage breast cancer. *Radiation Oncol* 2015; 114: 3–10.
23. Jameson M G, Holloway L C, Vial P J, Vinod S K, Metcalfe P E. A review of methods of analysis in contouring studies for radiation oncology. *J Med Imaging Radiat Oncol* 2010; 54: 401–410.
24. Feuvret L, Noel G, Mazeron J J, Bey P. Conformity index—a review. *Int J Radiat Oncol Biol Phys* 2006; 64: 333–342.
25. Kataria T, Sharma K, Subramani V, Karthick K P, Bisht S S. Homogeneity index: an objective tool for assessment of conformal radiation treatments'. *J Med Phys* 2012; 34: 207–213.
26. ICRU. International Commission on Radiation Units and Measurements; Prescribing recording and reporting photon-beam intensity-modulated Radiation Therapy (IMRT), ICRU Report 83. *J ICRU* 2010; 10: 1–106.
27. Marks L B, Bentzen S M, Deasy J O et al. QUANTEC: organ specific paper, thorax: lung, radiation dose-volume effects in the lung. *Int J Radiat Oncol Biol Phys* 2010; 76: S70–S76.
28. Xie X, Ouyang S, Wang H et al. Dosimetric comparison of left-sided whole breast irradiation with 3D-CRT, IP-IMRT and hybrid IMRT. *Oncol Rep* 2014; 31: 2195–2205.
29. Shiau A, Hsieh C, Tien H et al. Left-sided whole breast irradiation with hybrid-IMRT and helical tomotherapy dosimetric comparison. *BioMed Res Int* 2014; 2014: Article ID 741326. doi:10.1155/2014/741326.
30. Gagliardi G, Constine L S, Moiseenko V et al. QUANTEC: organ specific paper, thorax: heart, radiation dose-volume effects in the heart. *Int J Radiat Oncol Biol Phys* 2010; 76: S77–S85.
31. Darby S C, Ewertz M, McGale P et al. Risk of ischemic heart disease in women after radiotherapy for breast cancer. *N Engl J Med* 2013; 368: 987–998.
32. Henson K E, McGale P, Taylor C, Darby S C. Radiation-related mortality from heart disease and lung cancer more than 20 years after radiotherapy for breast cancer. *Br J Cancer* 2013; 108: 179–182.
33. Correa C R, Das I J, Litt H I et al. Association between tangential beam treatment parameters and cardiac abnormalities after definitive radiation treatment for left-sided breast cancer. *Int J Radiat Oncol Biol Phys* 2008; 72: 508–516.
34. Darby S C, McGale P, Taylor C W, Peto R. Long-term mortality from heart disease and lung cancer after radiotherapy for early breast cancer: prospective cohort study of about 300,000 women in US SEER cancer registries. *Lancet Oncol* 2005; 6: 557–565.
35. Lind P A, Pagnanelli R, Marks L B et al. Myocardial perfusion changes in patients irradiated for left-sided breast cancer and correlation with coronary artery distribution. *Int J Radiat Oncol Biol Phys* 2003; 55: 914–920.
36. Evans E S, Prosnitz R G, Yu X et al. Impact of patient-specific factors, irradiated left ventricular volume, and treatment set-up errors on the development of myocardial perfusion defects after radiation therapy for left-sided breast cancer. *Int J Radiat Oncol Biol Phys* 2006; 66: 1125–1134.
37. Guerrero M, Li X A, Earl M A, Safraraz M, Kiggundu E. Simultaneous integrated boost for breast cancer using IMRT: a radiobiological and treatment planning study. *Int J Radiat Oncol Biol Phys* 2004; 59: 1513–1522.
38. Korreman S S, Pedersen A N, Aarup L R, Nottrup T J, Specht L, Nystrom H. Reduction of cardiac and pulmonary complication probabilities after breathing adapted radiotherapy for breast cancer. *Int J Radiat Oncol Biol Phys* 2006; 65: 1375–1380.
39. Sung K, Lee K C, Lee S H, Ahn S H, Lee S H, Choi J. Cardiac dose reduction with breathing adapted radiotherapy using self respiration monitoring system for left-sided breast cancer. *Radiat Oncol J* 2014; 32: 84–94.
40. Swanson T, Grills I, Ye H et al. Six-year experience routinely utilising moderate deep inspiration breath-hold (MDIBH) for the reduction of cardiac dose in left-sided breast irradiation for patients with early stage or locally advanced breast cancer. *Am J Clin Oncol* 2013; 36: 24–30.
41. Williams T N, Moran J M, Hsu H S et al. Contralateral breast dose after whole-breast irradiation: an analysis by treatment technique. *Int J Radiat Oncol Biol Phys* 2012; 82: 2079–2085.
42. Woo T C S, Pignol J P, Rakovitch E et al. Body radiation exposure in breast cancer radiotherapy: impact of breast IMRT and virtual wedge compensation techniques. *Int J Radiat Oncol Biol Phys* 2006; 65: 52–58.
43. Fernando I N, Ford H T, Powles T J et al. Factors affecting acute skin toxicity in patients having breast irradiation after conservative surgery: a prospective study of treatment practice at the royal Marsden hospital. *Clin Oncol (R Coll Radiol)* 1996; 8: 226–233.
44. Vicini F A, Sharpe M, Kestin L et al. Optimising breast cancer treatment efficacy with intensity-modulated radiotherapy. *Int J Radiat Oncol Biol Phys* 2002; 54: 1336–1344.

45. Johansson S, Svensson H, Denekamp J. Dose response and latency for radiation-induced fibrosis, edema, and neuropathy in breast cancer patients. *Int J Radiat Oncol Biol Phys* 2002; 52: 1207–1219.
46. Pignol J, Olivetto I, Rakovitch E et al. A multicentre randomised trial of breast intensity-modulated radiation therapy to reduce acute radiation dermatitis. *J Clin Oncol* 2008; 26: 2085–2092.
47. Back M, Guerrieri M, Wratten C, Steigler A. Impact of radiation therapy on acute toxicity in breast conservation therapy for early breast cancer. *J Clin Oncol* 2004; 16: 12–13.
48. Mihai A, Rakovitch E, Sixel K et al. Inverse vs. forward breast IMRT planning. *Med Dosim* 2005; 30: 149–154.
49. Schubert L K, Gondi V, Sengbusch E et al. Dosimetric comparison of left-sided whole breast irradiation with 3DCRT, forward-planned IMRT, inverse-planned IMRT helical tomotherapy, and topotherapy. *Radiother Oncol* 2011; 100: 241–246.
50. Singla R, King S, Albuquerque K, Creech S, Dogan N. Simultaneous-integrated boost intensity-modulated radiation therapy (SIB-IMRT) in the treatment of early-stage left-sided breast carcinoma. *Med Dosim* 2006; 31: 190–196.
51. Small K, Kelly C, Beldham-Collins R, Gebiski V. Whole breast and excision cavity radiotherapy plan comparison: conformal radiotherapy with sequential boost versus intensity-modulated radiation therapy with a simultaneously integrated boost. *J Med Radiat Sci* 2012; 60: 16–24.
52. Bartelink H, Maingon P, Poortmans P et al. On behalf of the European organisation for research and treatment of cancer radiation oncology and breast cancer groups, whole-breast irradiation with or without a boost for patients treated with breast-conserving surgery for early breast cancer: 20-year follow-up of a randomised phase 3 trial. *Lancet* 2015; 16: 47–56.
53. Early Breast Cancer Trialists' Collaborative Group. Effects of radiotherapy and of differences in the extent of surgery for early breast cancer on local recurrence and 15-year survival: an overview of the randomised trials. *Lancet* 2005; 366: 2087–2106.
54. Freedman G M, Anderson P R, Bleicher R J et al. Five-year local control in a phase II study of hypofractionated intensity modulated radiation therapy with an incorporated boost for early stage breast cancer. *Int J Radiat Oncol Biol Phys* 2012; 84: 888–893.