

ARTICLES

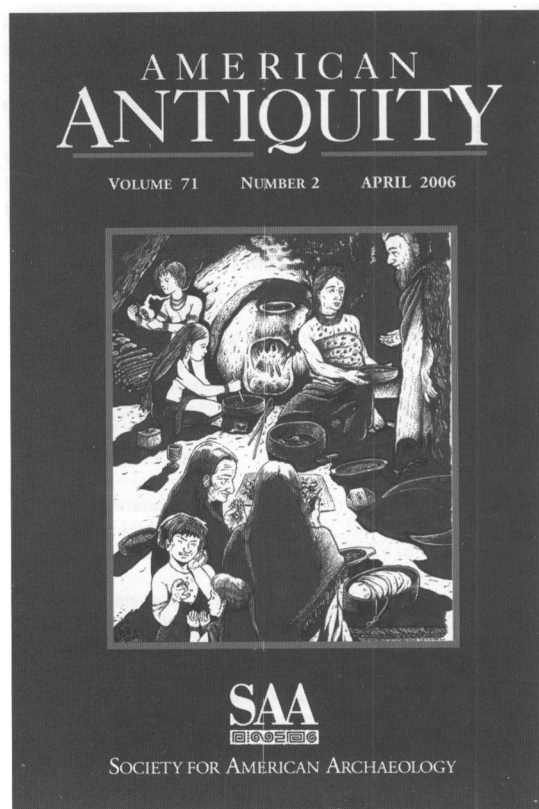
- 195 Climate Change and the Archaic to Woodland Transition (3000–2500 Cal B.P.) in the Mississippi River Basin
Tristram R. Kidder
- 233 Pots and Pox: The Identification of Protohistoric Epidemics in the Upper Mississippi Valley
Colin M. Betts
- 261 Bear's Journey and the Study of Ritual in Archaeology
Meghan C. L. Howey and John M. O'Shea
- 283 Food, Meals, and Daily Activities: Food *Habitus* at Neolithic Çatalhöyük
Sonya Atalay and Christine A. Hastorf

REPORTS

- 321 A Folsom Structure in the Colorado Mountains
Mark Stiger
- 353 Projectile Point Shape and Durability: The Effect of Thickness:Length
Joseph Cheshier and Robert L. Kelly
- 365 Anthropological Applications of Ancient DNA: Problems and Prospects
Connie J. Mulligan
- 381 Research Traditions, Public Policy, and the Underdevelopment of Theory in Plains Archaeology: Tracing the Legacy of the Missouri Basin Project
Mark D. Mitchell

COMMENTS

- 397 Comment on Harry's Discussion of Ceramic Specialization and Agricultural Marginality in the Prehistoric U.S. Southwest
David A. Phillips, Jr.



NOTICE TO AUTHORS

Latin American Antiquity publishes original papers on the archaeology, prehistory, and ethnohistory of Latin America, i.e., Mesoamerica, Central America, and South America, together with culturally affiliated adjacent regions. Papers may also treat more general theoretical and methodological issues with relevance to Latin America. Authors submit manuscripts to the editor for consideration as ARTICLES or REPORTS in English, Spanish, or Portuguese. Authors should submit an original and three copies of their manuscripts (including all figures, tables, references, and notes), along with an abstract in both English and Spanish. Detailed information on policy, style, and technical matters of manuscript preparation is given in English and in Spanish in the "Editorial Policy, Information for Authors, and Style Guide for *American Antiquity* and *Latin American Antiquity*," available through the World Wide Web at <http://www.saa.org/Publications/StyleGuide/styframe.html>. For additional information, updates, or clarification, consult the managing editor at the SAA office in Washington, D.C.

BOARD OF DIRECTORS OF THE SOCIETY FOR AMERICAN ARCHAEOLOGY

Officers

President: KENNETH M. AMES, Portland State University, Department of Anthropology, Portland, OR 97207

President-Elect: DEAN SNOW, Pennsylvania State University, 409 Carpenter Bldg, Department Of Anthropology University Park, PA 16802-3404

Secretary: LINDA CORDELL, CU Museum, Henderson Building CB 218, University of Colorado, Boulder, CO 80309-0001

Secretary-Elect: MICHAEL A. GLASSOW, University of California-Santa Barbara, Department of Anthropology, Santa Barbara, CA 93106

Treasurer: SUSAN M. CHANDLER, Alpine Arch Consultants Inc, PO Box 2075, 900 South Townsend Ave. Montrose, CO 81402-2075

Board Members-at-Large

CHRISTOPHER D. DORE, Statistical Research, Inc., PO Box 31865, 6099 E. Speedway Blvd., Tucson, AZ 85751

DOROTHY T. LIPPERT, National Museum of Natural History, NMNH Repatriation Office MRC-138, PO Box 37012, Washington, DC 20013-7012

EMILY MCCLUNG DE TAPIA, Inst de Investigaciones Antro, UNAM/CU Circuito Exterior S/n, Coyoacan, Mexico DF, DIF 04510 Mexico

SARAH H. SCHLANGER, NM Bureau of Land Management, PO Box 27115, NM 930, 1474 Rodeo Rd., Santa Fe, NM 87505-5630

SCOTT E. SIMMONS, Department of Anthropology, University of North Carolina Wilmington, Wilmington, NC 28403

MIRIAM T. STARK, Department of Anthropology, University of Hawaii, 2424 Maile Way, Saunders 346, Honolulu, HI 96822-2223

Ex-Officio Board Member

TOBIA. BRIMSEK, Executive Director, Society for American Archaeology, 900 Second St. NE, Suite 12, Washington, DC 20002-3560

ARTICLES

- 123 Architecture, Caching, and Foreign Contacts at Chac (II), Yucatan, Mexico
Michael P. Smyth
- 151 Socioeconomic Inequality and the Consumption of Chipped Stone at El Palmillo, Oaxaca, Mexico
Gary M. Feinman, Linda M. Nicholas, and Helen R. Haines
- 177 The Politics of Community and Inka Statecraft in the Colca Valley, Peru
Steven Wernke
- 209 Preceramic Occupations in Belize: Updating the Paleoindian and Archaic Record
Jon C. Lohse, Jaime Awe, Cameron Griffith, Robert M. Rosenswig, and Fred Valdez, Jr.

REPORT

- 227 An Ancient Maya Dock and Dam at Blue Creek, Rio Hondo, Belize
Jason W. Barrett and Thomas H. Guderjan

On the Cover: Examples of local late Intermediate period and Late horizon ceramics, from "The Politics of Community and Inka Statecraft in the Colca Valley, Peru," p. 189

⊗ The paper used in this publication meets the requirements of ANSI/NISO Z39.48-1992
(Permanence of Paper).