

Reconstructing geographic range-size dynamics from fossil data

Simon A. F. Darroch and Erin E. Saupe

Abstract.—Ecologists and paleontologists alike are increasingly using the fossil record as a spatial data set, in particular to study the dynamics and distribution of geographic range sizes among fossil taxa. However, no attempts have been made to establish how accurately range sizes and range-size dynamics can be preserved. Two fundamental questions are: Can common paleo range-size reconstruction methods accurately reproduce known species' ranges from locality (i.e., point) data? And, are some reconstruction methods more reliable than others? Here, we develop a methodological framework for testing the accuracy of commonly used paleo range-size reconstruction methods (maximum latitudinal range, maximum great-circle distance, convex hull, and alpha convex hull) in different extinction-related biogeographic scenarios. We use the current distribution of surface water bodies as a proxy for "preservable area," in which to test the performance of the four methods. We find that maximum great-circle distance and convex-hull methods most reliably capture changes in range size at low numbers of fossil sites, whereas convex hull performs best at predicting the distribution of "victims" and "survivors" in hypothetical extinction scenarios. Our results suggest that macroevolutionary and macroecological patterns in the relatively recent past can be studied reliably using only a few fossil occurrence sites. The accuracy of range-size reconstruction undoubtedly changes through time with the distribution and area of fossiliferous sediments; however, our approach provides the opportunity to systematically calibrate the quality of the spatial fossil record in specific environments and time intervals, and to delineate the conditions under which paleobiologists can reconstruct paleobiogeographical, macroecological, and macroevolutionary patterns over critical intervals in Earth history.

Simon A. F. Darroch. Department of Earth and Environmental Sciences, Vanderbilt University, 2301 Vanderbilt Place, Nashville Tennessee 37235-1805, U.S.A. E-mail: simon.a.darroch@vanderbilt.edu

Erin E. Saupe. Department of Earth Sciences, Oxford University, South Parks Road, Oxford, OX1 3AN, United Kingdom. E-mail: erin.saupe@earth.ox.ac.uk

Accepted: 10 August 2017

Published online: 18 January 2018

Data available from the Dryad Digital Repository: <http://dx.doi.org/doi:10.5061/dryad.107h6>

Introduction

Geographic ranges of species are fundamental units of biogeography. The properties associated with geographic ranges, including their structure, organization, size, and location, are controlled by a suite of factors such as organismal biology, life history, niche breadth, dispersal ability, phylogenetic affinity, and historical environmental changes (Willis 1922; Anderson 1984a,b; Brown et al. 1996; Gaston and Spicer 2001; Huntley et al. 2006; Gaston 2008; Gaston and Fuller 2009). The specific properties of ranges have been shown to affect both micro- and macroevolutionary processes, including the potential for speciation (Cardillo et al. 2003; Goldberg et al. 2011) and extinction (Payne and Finnegan 2007; Harnik et al. 2012; Runge et al. 2015; Saupe et al. 2015).

The relationship between geographic range size and extinction risk has garnered increased attention lately with the recognition that global ecosystems are in rapid decline and are showing signs of incipient ecosystem collapse analogous to the "Big 5" mass extinction events in the geological past (Barnosky et al. 2011; Hull et al. 2015). Taxonomic groups as disparate as plants, insects, mammals, amphibians, birds, reptiles, and mollusks have all shown dynamic changes in the size, shape, and location of individual species' ranges in response to global change, on timescales ranging from tens to thousands of years (Parmesan et al. 1999; Lyons 2003; Walther et al. 2002; Chen et al. 2011; Botts et al. 2013). Consequently, ecologists are increasingly looking to the fossil record as a source of historical data pertaining to how geographic range size and location can be affected during

mass extinction events, and to how aspects of geographic range confer either resilience or vulnerability to extinction. This has produced a wealth of studies that use fossil data to study the relationship between geographic range size and extinction risk (e.g., Payne and Finnegan 2007; Saupe et al. 2015) as part of a larger attempt to build predictive models for the future (Hadly et al. 2009; Raia et al. 2012; Hull and Darroch 2013; Darroch and Wagner 2015; Finnegan et al. 2015; Saupe et al. 2015). Despite these efforts, little is currently known regarding whether geographic range size (and range-size dynamics) can be reconstructed accurately from fossil locality data, and which commonly used paleoecological methods for range reconstruction are the most reliable (though see recent work on correcting biases in occupancy metrics; Foote 2016). A systematic methodology for quantifying the accuracy of these methods under different extinction-related and biogeographic scenarios will allow us to effectively calibrate the quality of the spatial fossil record in specific time intervals, and to place future paleobiogeographic studies on a firm conceptual footing.

Fossil species aside, defining and measuring the geographic ranges of modern species is itself problematic. Maps or other characterizations present much-simplified versions of the complex spatial and temporal patterns in which individual organisms are dispersed (Brown et al. 1996). Ranges are most frequently mapped as irregular areas (“outline maps”) that encompass all localities where a species has recently (or historically) been recorded (Brown et al. 1996). Some authors have, for example, distinguished between the “extent of occurrence” (the absolute limits of the occurrence of a species) and the “area of occupancy” (the area over which a species can be found at any one time). The latter will almost always be smaller than the former, because species do not occupy all areas within their range (Gaston 2003), and it suffers from issues of spatial scale. That is, a positive relationship exists between the area of occupancy identified for a species and the scale of the analysis (see International Union for Conservation of Nature and Natural Resources [IUCN 2015] Red List document “Categories and Criteria”). Consequently, area

of occupancy may be an unsuitable attribute to reconstruct from fossil data, and all discussions and data herein focus on extent of occurrence.

In this study, we use simulation studies to test whether fossil point (i.e., locality) data can be used to reconstruct range sizes and range dynamics. Specifically, we test (1) the degree to which typical paleobiological methods for range-size reconstruction reliably detect decreases in geographic range size, and (2) whether these methods accurately determine extinction selectivity based on the presumption that narrowly distributed species go extinct more readily (e.g., Finnegan et al. 2012; Saupe et al. 2015). We aim to identify the most reliable methods for range-size reconstruction and to pinpoint critical thresholds in the number of sites required for such methods to consistently produce biologically meaningful results.

Although the distribution and areas of fossiliferous sediments have undoubtedly changed through time, performing these experiments under a best-case scenario (i.e., assuming no loss of surface sediments) is a fundamental first step before additional layers of complexity are applied. We suggest these methods can be modified to be relevant to older time periods, and will thus enable more accurate studies of macroevolutionary and macroecological patterns and processes throughout Earth history.

Methods

Reduction in Geographic Range Size.—Reduction in a species’ range size is often used as an indicator of extinction risk (e.g., Payne and Finnegan 2007; Harnik et al. 2012; Runge et al. 2015; Darroch and Wagner 2015; Hull et al. 2015; IUCN 2015; Saupe et al. 2015). To address our question of whether paleobiological methods for range-size reconstruction can detect decreases in geographic range size, we used terrestrial range-size data reflecting “extent of occurrence” for extant herpetological species (taken from the IUCN Red List [IUCN 2015]). Large and small range sizes were chosen from similar geographic regions to represent pre- and post-range-contraction stages, respectively. Given the possible strong control exerted by the

distribution of preservable areas on the accuracy of range-size reconstructions, we expected the performance of range-size reconstruction methods to differ between wet and dry biomes, with the former expected to preserve fossil material more readily and completely across space. We therefore performed two sets of simulations to compare range-size dynamics in both biomes.

For the “wet” biome simulations, we used two closely related snake species native to the central and southeastern United States—*Nerodia fasciata* (banded water snake) and *Nerodia cyclopion* (green water snake). *Nerodia fasciata* has a relatively large range (851,850.2 km²), while *N. cyclopion* has a relatively small range (263,278.5 km²) that is largely a subset of the range of *N. fasciata* (Fig. 1); we therefore treat *N. fasciata* as our pre-impact range and *N. cyclopion* as our post-impact range, representing an approximately 70% reduction in range size.

For the “dry” biome simulations, we used two (unrelated) species with ranges centered in the

western United States—*Uma scoparia* (Mohave fringe-toed lizard) and *Anaxyrus canorus* (Yosemite toad). Although these ranges are nonoverlapping, they are geographically proximal and possess equivalently small preservable areas, providing a good test for identifying range contraction in relatively arid environments. Of these two species, *U. scoparia* has the larger range (39,199.64 km²) and represents the pre-impact stage, whereas *A. canorus* has a smaller range (10,315.37 km²) and represents the post-impact stage, an approximately 74% reduction in range size. In both wet and dry biome simulations, our “post-extinction” ranges are reduced in size but are not fragmented; fragmentation is an additional process that may affect threatened species but is not specifically examined here (Fahrig 2003).

We populated these species’ ranges with randomly placed fossil sites and employed standard paleobiological methods for range-size reconstruction to assess how consistently these methods retrieved a significant size difference between the two ranges (discussed later).

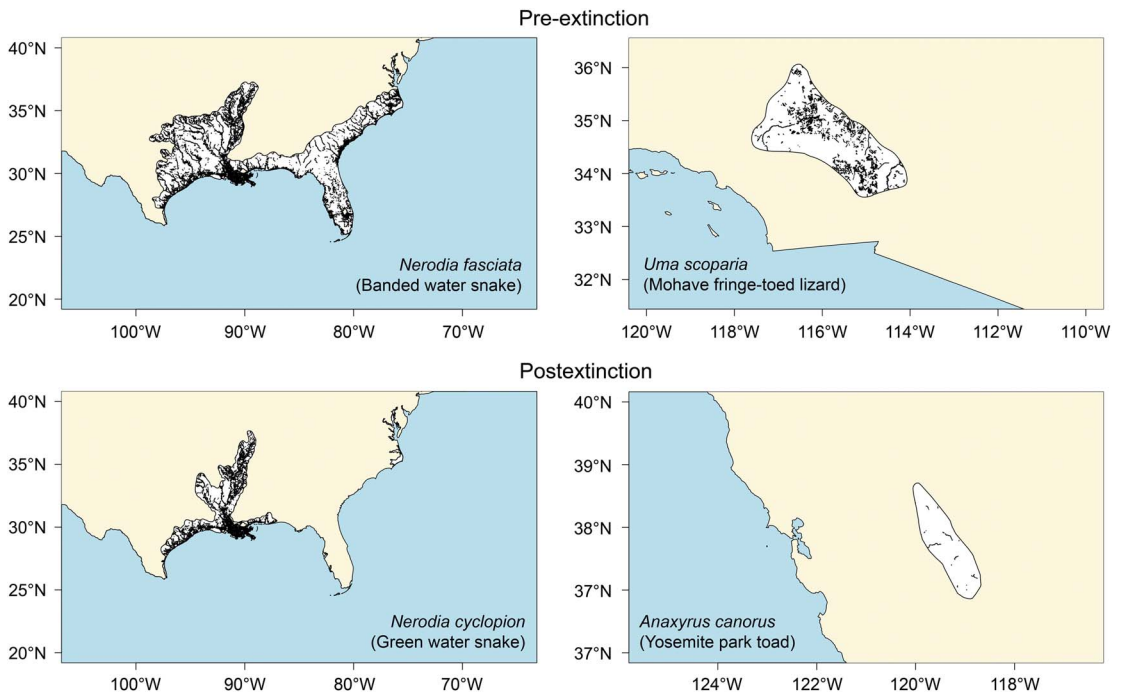


FIGURE 1. Mapped ranges (in white) for species used in the range-size contraction simulations, with wet ranges (*N. fasciata* and *N. cyclopion*) on the left and dry ranges (*U. scoparia* and *A. canorus*) on the right. The preservable parts of each range (taken from the USGS National Hydrography Dataset) are superimposed in black. Hypothetical “pre-extinction” and “post-extinction” ranges are shown in top and bottom panels, respectively.

By varying the number of sites in each simulation, we also tested the number of sites required to reliably recognize range-size contraction.

Importantly, however, constraints were placed on where the fossil occurrences were populated. That is to say, not all areas within the

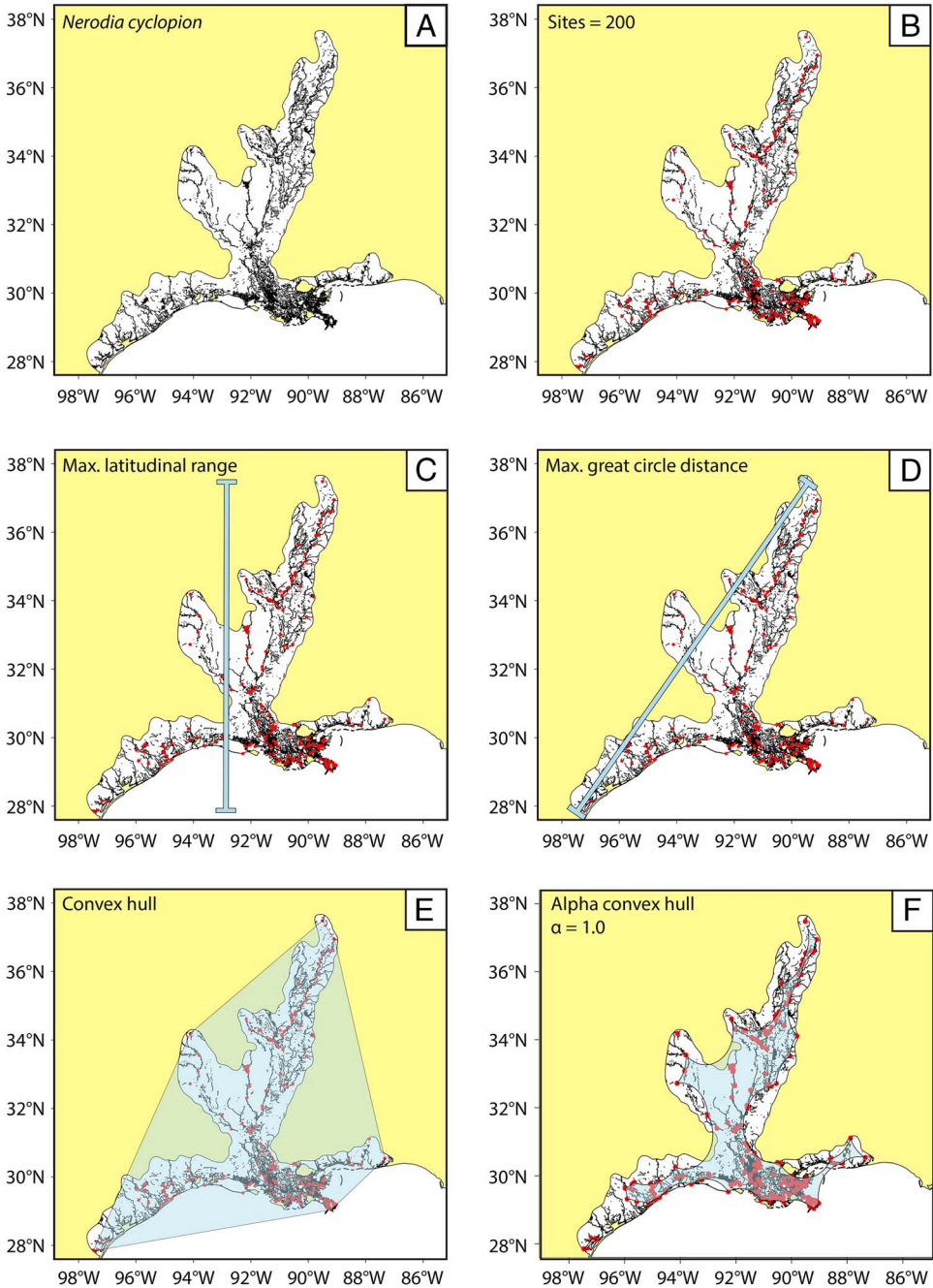


FIGURE 2. Methodology for range-size simulations and reconstruction; example using *N. cyclopion*. A, The preservable parts of each range (in black) are extracted from the mapped range taken from the IUCN Red List (in white). B, n fossil sites are randomly (and iteratively) placed within the preservable part of the range. C–F, The simulated range is then calculated (overlain in light blue) using our four methods for paleo range reconstruction; note that convex-hull methods are prone to overestimating the actual range, whereas alpha-hull methods tend to produce underestimates.

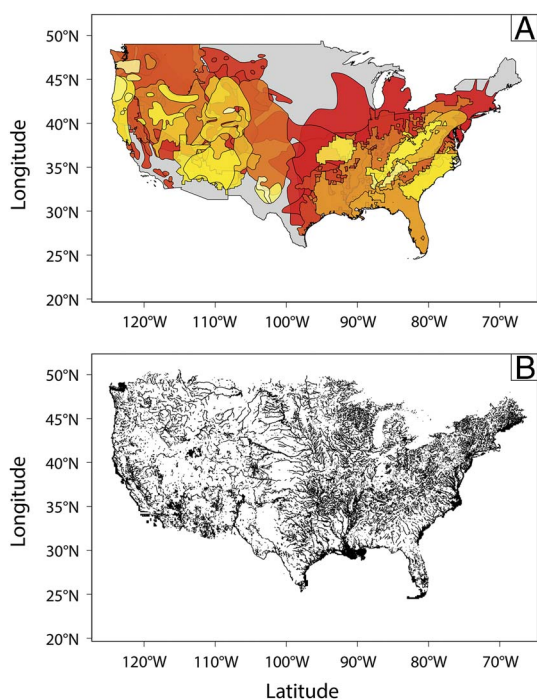


FIGURE 3. (A) The distribution of extant ranges (taken from the IUCN Red List) used for extinction-modeling studies, with larger ranges shown in red colors and smaller ranges in yellow colors (for full list of species, see Supplementary Table 2). (B) Distribution of areas in North America likely to preserve a paleontological record, defined as surface water features and depositional environments (part of the USGS National Hydrography Dataset). Note the inhomogeneous distribution of preservable areas, and thus the preservable parts of species ranges, across the continent.

geographic ranges of terrestrial species have equal preservation potential; most of the time, an organism needs to land in a depositional environment (i.e., a setting where sediment is accumulating) to stand any chance of being preserved. These depositional environments are typically aquatic in nature, including streams, rivers, and lakes (e.g., Behrensmeyer 1991). Thus, to ensure realism in the simulations, we approximated the “preservable” portions of each species’ geographic range using the 1:24,000 scale U.S. Geological Survey (USGS) Waterbodies Dataset (see Figs. 2, 3), which forms part of the National Hydrography Dataset (USGS 2017). We extracted all surface water features (lakes, ponds, streams, and rivers) from within each species’ geographic range and randomly placed occurrences only within these water bodies.

We ran simulations using four paleobiological methods for geographic range-size reconstruction: maximum latitudinal range, maximum great-circle distance between fossil occurrences, convex hull, and alpha convex hull (see Fig. 2). Of these, maximum latitudinal range (Finnegan et al. 2012; Foote and Miller 2013), maximum great-circle distance (Jablonski 1987; Jablonski and Roy 2003; Foote and Miller 2013; Foote et al. 2016), and convex hull (Stigall and Lieberman 2006; Hendricks et al. 2008; Myers and Lieberman 2010; Raia et al. 2012; Desantis et al. 2012; Darroch et al. 2014; Darroch and Wagner 2015; Saupe et al. 2015) have been used extensively by previous workers to measure extent of occurrence, whereas alpha hull has not.

Alpha hulls are constructed of polygons (“alpha shapes”) composed of piecewise linear simple curves that are concave with respect to the range. This method is able to capture range holes and invaginations at the margins of ranges, and is therefore potentially less prone to overestimation errors than convex-hull methods. Alpha convex hulls are parameterized by the term “ α ,” which dictates the concavity of the resulting alpha shape; for consistency, we use an α value of 1.0, although we explore the effect of varying this parameter (see Supplementary Fig. 1).

We iteratively ran simulations using site numbers ranging from 3 (i.e., the minimum required for convex-hull calculation) to 200, which approximates the range of locality numbers that typically characterize fossil tetrapods. Alpha hulls were problematic when using fewer than 25 sites (i.e., would tend to produce unrealistic geometries that could not be projected into geographic coordinates) and were thus not calculated for fewer than this number. For statistical power, we performed 100 iterations for each species using each method.

We quantified the accuracy and consistency of range-reconstruction methods in two ways. First, we used one-way Mann-Whitney U tests to assess whether range-reconstruction methods reliably identified post-impact ranges as smaller than pre-impact ranges. Second, we measured the extent to which simulations capture the absolute percentage range contraction in both wet

(~70% contraction) and dry (~74% contraction) biomes.

Extinction Scenarios.—Previous research suggests species with small geographic ranges preferentially go extinct relative to those with large range sizes (Purvis et al. 2000; Jones et al. 2003; Kiessling and Aberhan 2007; Payne and Finnegan 2007; Harnik et al. 2012; Finnegan et al. 2012; Saupe et al. 2015). To address our question of the degree to which paleo range-size reconstruction methods accurately determine extinction selectivity, we selected 40 North American species from the IUCN Red List to represent the distribution of a hypothetical pre-extinction clade. Under normal (i.e., relatively static) environmental conditions, organisms within a clade or taxonomic group typically display an approximately log-normal distribution of range sizes (see, e.g., Anderson 1977, 1985; Gaston 1996, 1998). As such, we chose species with an eye toward creating such a distribution (Fig. 3). Species were also chosen so as to exhibit minimum geographic bias in the sizes of ranges and the latitudinal/longitudinal range of centroids; the result is a collection of species with small and large ranges that are evenly distributed across North America (Supplementary Fig. 2). The identities of these species and details of habitat/ecology are given in Supplementary Table 1. As with the simulations on range-size reduction detailed earlier, we extracted the preservable (i.e., aquatic) parts of each range using the USGS Waterbodies Dataset (USGS 2017).

Using this distribution of species, we set arbitrary range size “extinction thresholds”: these are minimum range sizes below which we expect species to go extinct in a hypothetical extinction scenario. Species with ranges larger than the identified threshold were deemed “survivors,” whereas those below the threshold were considered “victims.” We considered both a “low-sensitivity” threshold and a “high-sensitivity” threshold, designated by natural breaks in the range-size frequency distribution (see Supplementary Fig. 3); our low-sensitivity thresholds involved relatively large differences in range size between victims and survivors, whereas our high-sensitivity thresholds involved smaller differences. These thresholds correspond to extinction intensities

of 85–90% and 45–52% for low- and high-sensitivity thresholds, respectively. To mirror the stochastic nature of extinction dynamics, we added noise to the extinction selectivity signal, such that a few large-ranged species went extinct, and not all small-ranged species went extinct (see Supplementary Table 2). Because we used three measures of range size (absolute area, maximum latitudinal range, and maximum great-circle distance) that have different distributions of relative sizes, we set three different extinction thresholds.

Range-size simulations were implemented to examine the extent to which our range-reconstruction methods accurately predicted the distribution of survivors and victims in each extinction scenario. Similar to our range-contraction simulations, we reconstructed species’ range sizes using varying numbers of occurrences, and for statistical power, we performed 100 iterations for each species, method, and number of sites, resulting in a total of 168,000 simulations.

We assessed the number of simulations that correctly predicted extinction selectivity using binary logistic regressions. We log-transformed all range-size data to conform to the assumption of linearity of the independent variables and the log odds. We counted a simulation as successful if it returned a significant p -value (α level 0.05) in the binary logistic analysis, indicating it found signal in the data suggesting that the smaller-ranged species go extinct more readily.

All range-size simulations and statistical analyses were performed using the R programming language (R Development Core Team 2015) and the following packages: ‘sp’ (Pebesma and Bivand 2005), ‘maptools’ (Lewin-Koh et al. 2011), ‘PBSmapping’ (Schnute et al. 2008), ‘rgeos’ (Bivand and Rundel 2013), ‘rgdal’ (Bivand et al. 2014), and ‘alphahull’ (Pateiro-Lopez and Rodruiguez-Casal 2009).

Results

Reduction in Geographic Range Size.—All four range-reconstruction methods reliably recognized the range-size decrease in the dry biome experiments (*U. scoparia* and *A. canorus*; Fig. 4; Supplementary Fig. 4). All simulations returned significant size decreases using only

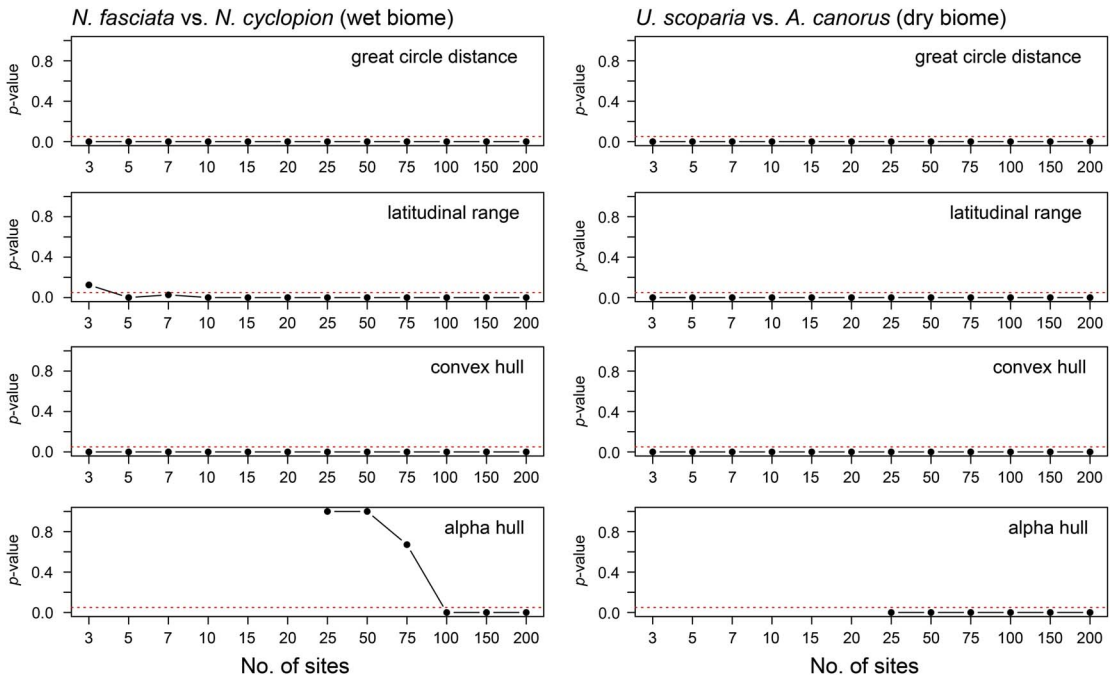


FIGURE 4. The p -values from Mann-Whitney U tests comparing pre- and post-contraction ranges in both wet and dry biomes. Values below the 95% confidence interval ($p=0.05$; marked by dashed line in each plot) indicate that the distribution of simulated post-contraction ranges is statistically smaller than that of pre-contraction ranges.

3 sites with maximum great-circle distance, maximum latitudinal range, and convex-hull methods. That is to say, no overlap occurred in range-size estimates between the two species across all simulations. When using the alpha-hull method, all simulations correctly identified size decreases at the lowest number of sites (i.e., 25). Mann-Whitney U tests confirm these results, wherein simulated post-impact ranges were statistically smaller at 95% confidence for all methods and site numbers. Iterative subsampling of simulated ranges (Supplementary Fig. 5) confirms these general patterns.

The performance of range-reconstruction methods differed for the wet biome (*N. fasciata* and *N. cyclopion*). Maximum great-circle distance and convex-hull methods returned a significant reduction in range size using 3 sites, whereas maximum latitudinal range required 5. In contrast, alpha hull incorrectly identified pre- and post-impact range sizes using 25 to 75 sites, such that it reconstructed *N. fasciata* as the smaller ranged of the two species (see Supplementary Fig. 4). On average, pre-impact ranges were significantly greater than those of post-impact

ranges for all site numbers and reconstruction methods aside from alpha hull; Mann-Whitney U analyses suggested 100+ sites are required for the alpha-hull method to recognize accurately a decrease in range size.

The results from our range-contraction simulations can be summarized as follows: (1) Range-size reconstruction methods differ in their performance between wet and dry biomes with regard to correctly identifying a range contraction. In the wet biome, maximum great-circle distance and convex-hull methods perform best (especially when limited to <5 sites), whereas maximum latitudinal range and alpha hull perform well only when 5+ and 100+ sites are used, respectively. (2) Range-reconstruction methods more reliably identify range-size contractions in dry rather than wet biomes. (3) Maximum great-circle distance and convex-hull methods identify range-size contractions more reliably than maximum latitudinal range and alpha-hull methods.

Extinction Scenarios.—We quantified performance of the four range-reconstruction methods in estimating extinction risk using binary logistic regressions. Since we performed 100

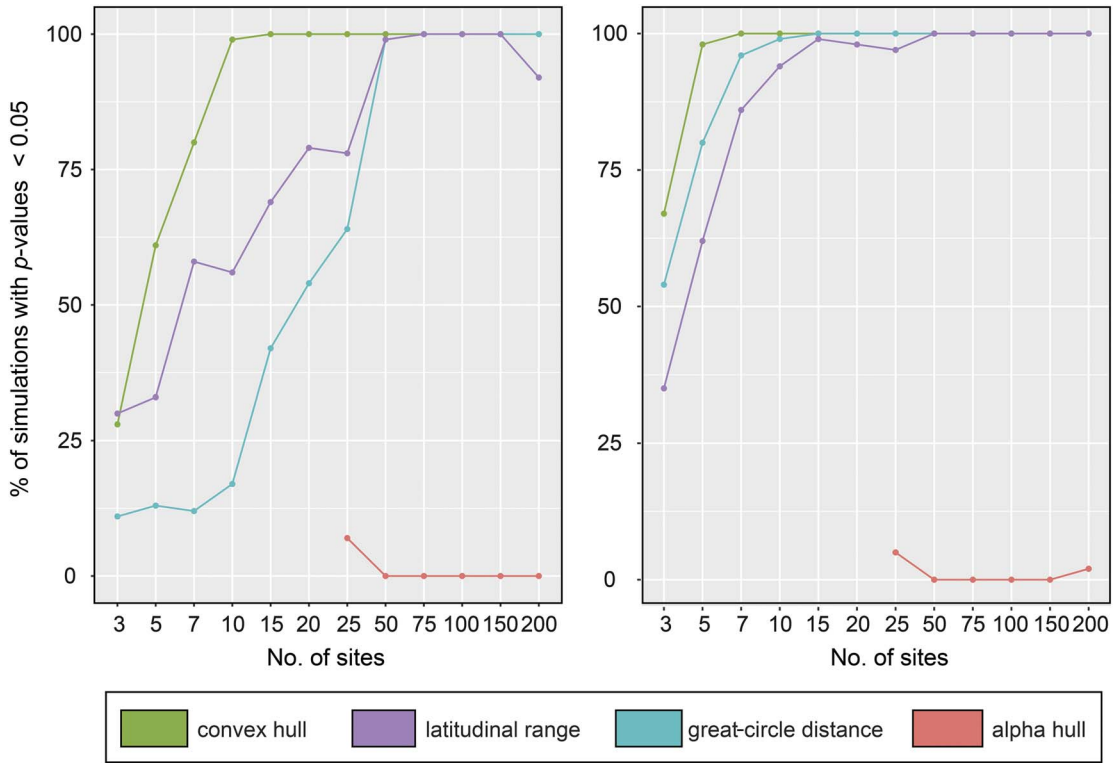


FIGURE 5. Performance of range-size reconstruction methods at recovering the correct distribution of extinct and surviving taxa in extinction-modeling studies, expressed as percentage of total simulations. Left plot illustrates our low-sensitivity scenario; right plot shows the high-sensitivity scenario. Note the improvement of many methods when a larger number of simulated fossil localities is used.

simulations for each site number, we tabulated the number of simulations that correctly predicted the distribution of survivors and victims among our 40 species (Fig. 5). The performance of the range-reconstruction methods differed significantly between low- and high-sensitivity thresholds ($\sim 90\%$ and $\sim 50\%$ species extinction, respectively); however, at the high-sensitivity threshold, three of the methods (maximum latitudinal range, maximum great-circle distance, and convex hull) predict extinction patterns at relatively low numbers (~ 10) of sites ($>90\%$ of p -values ≤ 0.05). Of these, the convex-hull method performed best, predicting extinction risk in 98% of simulations when using only 5 sites to reconstruct range sizes. Maximum great-circle distance also performed well, with 80 and 96% of simulations correctly predicting extinction risk using only 5 and 7 sites, respectively. In contrast, alpha hull performed poorly, with a success rate of only 5% using 25 sites.

Interestingly, all four methods performed worse under the low-sensitivity ($\sim 90\%$ extinction) threshold. The relative ordering of the methods in terms of their performance remained almost unchanged from the results under the high-sensitivity ($\sim 50\%$ extinction) threshold, but the number of sites required to attain a high level of accuracy increased. For example, for maximum latitudinal range, the number of sites rose from 10 to 50 for $>90\%$ of simulations to correctly predict extinction risk; likewise, for maximum great-circle distance, the number of sites required to achieve the same accuracy rose from 7 to 50.

Discussion

Best and Worst Methods for Range Reconstruction.—Results from both the range-contraction and extinction simulations suggest macroevolutionary and macroecological patterns, at least in the relatively recent past,

can be studied reliably using only a few fossil occurrence sites. Range contraction in both dry and wet biomes can be preserved and detected using a variety of commonly used paleobiological methods. Within the wet biome, we find that great-circle distance and convex-hull methods perform best and give statistically consistent results using only 3+ sites. Latitudinal range also performs well above a threshold of 5+ sites, whereas alpha hull performs relatively poorly, requiring a threshold of 100+ sites.

We find that range contraction is easier to detect in dry biomes than in wet biomes, with three sites sufficient for all four methods. This result at first appears counterintuitive: more preservable area should logically produce a more reliable fossil record, and thus a more reconstructable range. However, when comparing the sizes of the two ranges, the patchiness of the preservable areas in the dry biome may allow for detection of a statistical difference between the larger and smaller range (although this may hold only when fossil "localities" are randomly distributed, as they are here). We make a preliminary attempt to test this hypothesis by sampling 0.5° by 0.5° grid cells from within each of the four ranges shown in Figure 1 (see Supplementary Figs. 6, 7), and comparing mean pairwise distances between the centroids of preservable areas within each grid cell. The results, however, reveal that mean distances are equivalent in both wet and dry biomes (see Supplementary Fig. 8), and thus patchiness in preservable areas may not be driving the observed pattern and some other explanation may be required.

Similar to the range-contraction experiments, our extinction simulations offer justification for many paleoecological and macroevolutionary studies that reconstruct paleo-range sizes and dynamics; three of the four studied range-reconstruction methods (maximum great-circle distance, maximum latitudinal range, and convex hull) accurately predicted (>90% of p -values ≤ 0.05) patterns of species' survival based on range size using only approximately 10 fossil sites in our high-sensitivity scenario. Although there were substantial differences between the low- and

high-sensitivity scenarios, the results suggest site thresholds that could potentially guide future studies. That is to say, to achieve at least 90% accuracy assuming a low-sensitivity threshold, 10+ sites are needed for the convex-hull method, and 50+ sites are needed for maximum latitudinal range and maximum great-circle distance. Alpha hulls performed extremely poorly in both scenarios (see Supplementary Table 3). Although the method can perform well when sites are randomly placed anywhere within the range (e.g., see Supplementary Fig. 1), alpha shapes struggle to resolve real range geometries when clustered within linearly-oriented features such as streams, rivers, and lakes. Increasing the α value for hulls can help to reconstruct more realistic geometries, but the resulting polygons become less concave and thus equivalent to convex-hull methods.

Perhaps counterintuitively, all range-reconstruction methods performed better under the high-sensitivity (~50% extinction) scenario over the low-sensitivity (~90% extinction) scenario. One explanation for this may be a lack of statistical power, creating difficulty in recovering the correct extinction pattern under the low-sensitivity threshold. That is to say, few species "survive" in this scenario, making it difficult for the model to determine correctly the difference in range size between those species that go extinct and those that do not. Alternatively (or in addition), the better method performance in the high-sensitivity scenario may be an inadvertent result of the specific species that straddle the low- and high-sensitivity thresholds. At the low-sensitivity threshold, the methods are attempting to recover the "survival" of western species with ranges centered in more arid regions and the "extinction" of smaller-ranged species with ranges centered primarily in Florida and Louisiana. Given the limited distribution of water bodies (and therefore of preservable area) in the western United States, all methods will consistently underestimate range size of the western-distributed species. Conversely, the preservable parts of each range will more closely approximate the perimeter of species distributed in the wetter southeastern United States, and thus a random placement of

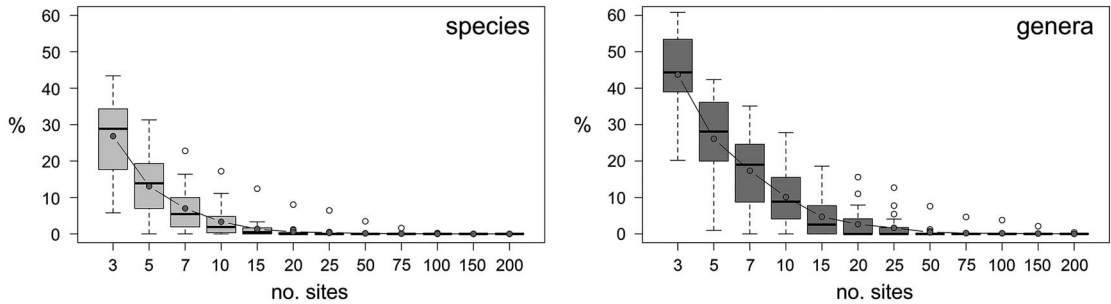


FIGURE 6. Percentage of Cenozoic fossil terrestrial tetrapod (mammal, reptile, and amphibian) species (left) and genera (right) discovered in increasing numbers of fossil sites (defined as localities with unique paleolatitude and paleolongitude coordinates) in North America. Boxes illustrate the spread of values for all North American Land Mammal Ages (NALMAs), with mean values superimposed as points (see Supplementary Fig. 6 for details of individual NALMAs). Comparing these values with the trajectory of percentage successful simulations for different range-reconstruction methods shown in Figs. 4 and 5 provides a measure of the utility of the spatial fossil record of tetrapods for analysis of range-size dynamics in deep time.

sites will more closely reconstruct actual range sizes for these species. In other words, the simulations are trying to recover a result wherein a species prone to range underestimation survives and a species prone to range overestimation goes extinct. Although this arrangement of species and thresholds was entirely inadvertent, it illustrates the difficulty of determining the relative sizes of species' ranges from fossil locality data if these species are distributed in radically different biomes.

Practical Comparisons with the Terrestrial Fossil Record.—The number of localities needed for accurate paleo range-size analyses can be compared directly with the number available for various taxa in the fossil record. Such quantification provides a broad sense for how useful the fossil record is as a spatial, rather than a temporal, data set. Given that our range simulations are most applicable to terrestrial (non-volant) vertebrates, we downloaded all Cenozoic tetrapod (mammals, reptiles, and amphibians) occurrence data from the Paleobiology Database (<https://paleobiodb.org>; details given in Supplementary Material 1). We split occurrences by North American Land Mammal Ages (NALMAs); these time bins range in duration from 226,000 years (Rancholabrean: ~0.24–0.014 Ma) to 10.2 Myr (Arikarean: 30.8–20.6 Ma) and are probably among the shortest intervals for which multispecies range-size or biogeographic analyses could be undertaken

on continental scales (see, e.g., Fraser et al. 2014). Because many paleobiogeographic analyses of terrestrial faunas have been performed at the genus rather than the species level (see, e.g., Hadly et al. 2009), we calculated the number of occurrences for both genera and species. The results (Fig. 6) illustrate the percentage of species and genera within NALMAs preserved at each number of sites treated in our simulations (details for individual NALMAs given in Supplementary Fig. 9).

At the species level, results range from poor coverage (only 10% of species in the Rancholabrean are preserved at 3 sites, decreasing to nearly 0% for 5+ sites) to remarkably good coverage (e.g., 30% of species are preserved at 5 sites and ~10% of species are preserved at 20 sites in the Wasatchian). For the vast majority of NALMAs (with the exception of the Monroecreekian and Duchesnian), between 10% and 50% of species are preserved at 3+ sites, a number that our simulations suggest is sufficient for detecting changes in range-size dynamics using great-circle distance and convex-hull methods in either wet or dry biomes. At 10+ sites (the threshold suggested for two of our methods for detecting the correct split of victims and survivors in our extinction experiment), most time bins possess between 1% to 10% of species (and ~17% in the Wasatchian), which still represents an encouraging return when 100–300 species are typically recorded in each time bin. Only in the

Wasatchian are any species (0.23%) preserved at 100+ sites, rendering alpha hull effectively useless for this type of analysis. The results are even more encouraging at the genus level, with 11 out of 22 NALMAs possessing 30–40% of genera represented at 5+ sites. Cumulatively, these percentages suggest that many hundreds of Cenozoic species may be sufficiently well sampled to examine changes in their distribution and geographic range size and to test a broad swath of macroecological and macroevolutionary questions. Logically, these percentages will only increase if coarser time resolution is allowed (see, e.g., Desantis et al. 2012; Darroch et al. 2014), although the macroecological and environmental hypotheses invoked to explain any discovered patterns will also be correspondingly broader.

Caveats and Future Directions.—Our methodological framework for these simulations makes a number of assumptions, all of which introduce significant caveats to the conclusions we reach concerning the utility and completeness of the spatial fossil record. One major assumption concerns our random placement of simulated fossil sites within ranges. In reality, fossil sites are aggregated and “patchy” on all scales (Plotnick 2017), which may have a significant effect on the accuracy of range reconstruction. The other assumptions we make can be organized loosely into “top-down” (climate and tectonic activity) versus “bottom-up” (necrolysis, biostratigraphy, and diagenesis) effects that control the quality of the vertebrate fossil record (Noto 2010). With regard to the former, although we accounted for differential preservation and incompleteness of the fossil record by varying site numbers and by restricting occurrences to preservable areas, our most influential assumption is that the entirety of a species’ range is preserved and able to be interrogated by paleontologists. However, weathering, erosion, tectonism, and isostatic/eustatic sea-level change are responsible for constantly removing or burying large quantities of fossil-bearing sedimentary rocks, such that the exposed rock area for any given geological unit typically decreases as you go further back in Earth history (Raup 1976; note, however, this pattern is likely more apparent for terrestrial than marine sediments, see, e.g., Peters and

Heim 2010). Consequently, it seems likely that the accuracy of many range-size reconstruction methods will covary with the surface expression of fossiliferous sediments through time.

In terms of bottom-up effects, another assumption inherent in these simulations is that all species are equally abundant (and thus equally likely to be found as fossils) and have equivalent taphonomic potentials. With regard to the first point (rarity), the relative abundance of a species may have a huge impact on the likelihood of it being discovered as a fossil. Many authors have argued that the preservation of any one species is potentially subject to an “abundance threshold,” such that rare taxa are less likely to be preserved (and/or subsequently discovered) than common species. Modern mammalian species exhibit a bimodal pattern of rarity, with an overabundance of species in both the rarest and most common categories (Yu and Dobson 2000); a large proportion of fossil tetrapod species may therefore be underrepresented in the fossil record.

With regard to the second point (taphonomy), a suite of taphonomic processes favors the preservation of some taxa over others. The most obvious of these is size—the bones of animals under 100 kg tend to weather beyond recognition more rapidly than those of larger animals (Behrensmeyer 1978; Janis et al. 1998; Plotnick et al. 2016). Thus, in general, smaller species may require more atypical environmental conditions to be reliably preserved and, correspondingly, may tend to have smaller reconstructed ranges. In addition to overall body size, the robustness of skeletal elements (Behrensmeyer et al. 2003, 2005), selective scavenging (Bickart 1984; Livingston 1989), and ambient environmental energy at the time of deposition (i.e., a lake margin vs. a fast-flowing river; Kidwell and Flessa 1996) are all processes that favor the preservation of some species over others, and almost certainly exert a taphonomic overprint on the reconstructed ranges of terrestrial species. With that said, the USGS Waterbodies Dataset likely represents a minimum estimate for the distribution of preservable area within a species’ range. Although tetrapod remains are most often fossilized in

streams, rivers, and lakes, they can also be preserved in paleosols, aeolian sands, and within overbank deposits, none of which are incorporated here. Caves and karsted environments in particular make up a significant fraction of fossil sites in the Quarternary (Jass and George 2010; Plotnick et al. 2015; although see Noto 2010 for a comprehensive list of preservable terrestrial subenvironments). Our modeled preservable area should thus be seen as conservative, and the accuracy of range-size reconstructions may be considerably better than indicated by our simulations (especially in arid environments).

Another potential problem with reconstructing range sizes from fossil locality data involves the issue of postmortem transport. Many of the aquatic settings that favor fossil preservation are also characterized by ambient currents that can move vertebrate remains. Although estimates of the maximum distance skeletal remains can travel are relatively scarce, experimental work suggests bone material can move more than 10 km over approximately 10 years of continual transport without suffering levels of breakage and abrasion that might prevent them from eventually being identified (Hanson 1980; Aslan and Behrensmeyer 1996). As a result, much of the terrestrial fossil record may be, to some extent, spatially averaged. In other words, fossils may have moved significant distances from their point of death, although it is not known whether material is commonly transported entirely outside the original range of the species.

We stress that although our simulations are designed to test whether chosen range-reconstruction methods can accurately capture a “snapshot” of a species’ distribution, the vast majority of the fossil record is not only spatially averaged but also time averaged, such that typical accumulations of bone material likely represent ages spanning 10^1 – 10^4 years (e.g., Behrensmeyer et al. 2000). Although this property of the fossil record prevents range dynamics from realistically being investigated on timescales less than 10^5 years, time averaging can become advantageous when testing macroecological hypotheses on larger temporal scales (e.g., Darroch et al. 2014). The taphonomic processes

leading to time averaging filter out short-term variations and high-frequency ecological variability (such as seasonal fluctuations), such that local accumulations of fossils represent long-term habitat conditions (Kowalewski et al. 1998; Olszewski 1999; Tomašových and Kidwell 2010; Saupe et al. 2014). With further refinement, however, our methodological approach could be modified to reproduce dynamic range shifts over a series of time steps and to combine simulated localities from each step. In this fashion, our method could be used to systematically investigate the effect of time averaging in masking (or highlighting) relative range-size changes over longer timescales.

Finally, we suggest that our simulation approach can be adapted to study range dynamics in marine taxa. The advantages of performing such analyses in the marine realm are: (1) More studies have analyzed paleo-range dynamics in the marine than the terrestrial realm (see, e.g., Payne and Finnegan 2007; Harnik et al. 2012; Saupe et al. 2015), and therefore simulations will have broader applicability and explanatory power. (2) In the marine realm, overall preservation potential will be higher in a greater proportion of the species’ range than it is for terrestrial species. This will likely affect the minimum number of occurrences required to accurately reconstruct ranges but will also remove some of the problems associated with the unusual geometries of terrestrial preservable areas (i.e., for alpha hulls). (3) Although preservation potential differs in marine settings, decades of research (e.g., Kidwell and Bosence 1991; Kowalewski et al. 2003; Kidwell et al. 2005; Kosnik et al. 2009; Darroch 2012; Olszewski and Kaufman 2015) have worked toward calibrating the taphonomic biases associated with different taxa in many of these settings, potentially allowing taphonomic potential to be traced onto regional-scale maps of the world’s coastlines and ocean floor. (4) The number of occurrences for marine species is typically higher than it is for terrestrial species, and perhaps promises even better news for workers studying macroecological and macroevolutionary patterns in range-size dynamics through deep time.

Conclusions

We developed a methodological framework for testing the accuracy of commonly used paleo range-size reconstruction methods in different extinction-related biogeographic scenarios. Our results suggest that range dynamics and extinction patterns, at least in the relatively recent past, can be reconstructed reliably using only a few fossil occurrence sites. Moreover, we find that range dynamics and extinction patterns can be detected easily using three commonly used paleobiological methods—convex hull, latitudinal range, and maximum great-circle distance. Although we find minor differences in the performance of these methods in predicting survivors and victims in hypothetical extinction scenarios (convex hull performs the best, with latitudinal range and maximum great-circle distance marginally worse at <25 sites), only alpha hull performs poorly enough to be effectively useless.

We acknowledge that a raft of geological, biological, and taphonomic factors currently prevent our simulations from serving as a perfect test of the quality of the spatial fossil record. However, we stress that performing these experiments under a best-case scenario (e.g., assuming no loss of surface sediments) is a needed first step before additional layers of complexity and taphonomic filters can be applied. Moreover, the results do have some immediate applicability to paleoecological studies, particularly in investigating range dynamics in the Pleistocene and Holocene—two epochs for which large areas of fossil-bearing sediment persist at the surface (e.g., Hadly et al. 2009). We suggest that these simulation-based methodologies, based on extant species' ranges (see also Fraser 2017), can provide a powerful framework for examining the utility of the fossil record as a spatial data set.

Acknowledgments

This article was inspired by discussions with Doug Erwin, Pete Wagner, Kate Lyons, Josh Miller, and Pincelli Hull (among many others) on how we might go about investigating the quality of the spatial fossil record. We thank Huijie Qiao for assistance with the great-circle distance R code. For the fossil analysis part of

the article, we thank all contributors to the Paleobiology Database, especially J. Alroy, M. Uhen, W. Clyde, J. Marcot, R. Hulbert, and P. Holroyd for being the principal contributors to the tetrapod data set used in this study. This article was considerably improved after constructive reviews from Roy Plotnick and an anonymous reviewer.

Literature Cited

- Anderson, S. 1977. Geographic ranges of North American terrestrial mammals. *American Museum Novitates* 2629:1–15.
- . 1984a. Geographic ranges of North American birds. *American Museum Novitates* 2785:1–15.
- . 1984b. Areography of North American fishes, amphibians, and reptiles. *American Museum Novitates* 2802:1–16.
- . 1985. The theory of range-size distributions. *American Museum Novitates* 2833:1–20.
- Aslan, A., and A. K. Behrensmeyer. 1996. Taphonomy and time resolution of bone assemblages in a contemporary fluvial system: the East Fork River, Wyoming. *Palaios* 11:411–421.
- Barnosky, A. D., N. Matzke, S. Tomiya, G. O. U. Wogan, B. Swartz, T. B. Quental, C. Marshall, J. L. McGuire, E. L. Lindsey, K. C. Maguire, B. Mersey, and E. A. Ferrer. 2011. Has the Earth's sixth mass extinction already arrived? *Nature* 471:51–57.
- Behrensmeyer, A. K. 1978. Taphonomic and ecologic information from bone weathering. *Paleobiology* 4:150–162.
- . 1991. Terrestrial vertebrate accumulations. In P. A. Allison, and D. E. G. Briggs, eds. *Taphonomy: releasing the data locked in the fossil record*. Topics in Geobiology 9:291–335. Plenum, New York.
- Behrensmeyer, A. K., S. M. Kidwell, and R. A. Gastaldo. 2000. Taphonomy and paleobiology. *Paleobiology* 26:103–147.
- Behrensmeyer, A. K., C. T. Stayton, and R. E. Chapman. 2003. Taphonomy and ecology of modern avifaunal remains from Ambesoli Park, Kenya. *Paleobiology* 29:52–70.
- Behrensmeyer, A. K., F. T. Fursich, R. A. Gastaldo, S. M. Kidwell, M. A. Kosnik, M. Kowalewski, R. E. Plotnick, R. R. Rogers, and J. Alroy. 2005. Are the most durable shelly taxa also the most common in the marine fossil record? *Paleobiology* 31:607–623.
- Bickart, K. J. 1984. A field experiment in avian taphonomy. *Journal of Vertebrate Paleontology* 4:525–535.
- Bivand, R., and C. Rundel. 2013. rgeos: interface to geometry engine-open source (GEOS). R package, Version 0.3–2.
- Bivand, R., T. Keitt, and B. Rowlingson. 2014. rgdal: bindings for the geospatial data abstraction library. R package, Version 0.8–16.
- Botts, E. A., B. F. N. Erasmus, and G. Alexander. 2013. Small range size and narrow niche breadth predict range contractions in South African frogs. *Global Ecology and Biogeography* 22:567–576.
- Brown, J. H., G. C. Stevens, and D. M. Kaufman. 1996. The geographic range: size, shape, boundaries, and internal structure. *Annual Review of Ecology, Evolution, and Systematics* 27:597–623.
- Cardillo, M., J. S. Huxtable, and L. Bromham. 2003. Geographic range size, life history, and rates of diversification in Australian mammals. *Journal of Evolutionary Biology* 16:282–288.
- Chen, I.-C., J. K. Hill, R. Ohlemuller, D. B. Roy, and C. D. Thomas. 2011. Rapid range shifts of species associated with high levels of climate warming. *Science* 333:1024–1026.
- Darroch, S. A. F. 2012. Carbonate facies control on the fidelity of surface-subsurface agreement in benthic foraminiferal assemblages: implications for index-based paleoecology. *Palaios* 27:137–150.

- Darroch, S. A. F., and P. J. Wagner. 2015. Response of beta diversity to pulses of Ordovician–Silurian mass extinction. *Ecology* 96:532–549.
- Darroch, S. A. F., A. E. Webb, N. Longrich, and J. Belmaker. 2014. Paleocene–Eocene evolution of beta diversity among ungulate mammals in North America. *Global Ecology and Biogeography* 23:757–768.
- Desantis, L. R. G., R. A. B. Tracy, C. S. Koontz, J. C. Roseberry, and M. C. Velasco. 2012. Mammalian niche conservatism through deep time. *PLoS ONE* 7:e35624.
- Fahrig, L. 2003. Effects of habitat fragmentation on biodiversity. *Annual Review of Ecology, Evolution, and Systematics* 34:487–515.
- Finnegan, S., N. Heim, S. Peters, and W. W. Fischer. 2012. Climate change and the selective signature of the Late Ordovician mass extinction. *Proceedings of the National Academy of Sciences USA* 109:6829–6834.
- Finnegan, S., S. C. Anderson, P. G. Harnik, C. Simpson, D. P. Tittensor, J. E. Byrnes, Z. V. Finkel, D. R. Lindberg, L. H. Liow, R. Lockwood, H. K. Lotze, C. R. McClain, J. L. McGuire, A. O-Dea, and J. M. Pandolfi. 2015. Paleontological baselines for evaluating extinction risk in the modern oceans. *Science* 348:567–570.
- Foote, M. 2016. On the measurement of occupancy in ecology and paleontology. *Paleobiology* 42:707–729.
- Foote, M., and A. I. Miller. 2013. Determinants of early survival in marine animal genera. *Paleobiology* 39:171–192.
- Foote, M., K. A. Ritterbush, and A. I. Miller. 2016. Geographic ranges of genera and their constituent species: evolutionary dynamics, and extinction resistance. *Paleobiology* 42:269–288.
- Fraser, D. 2017. Can latitudinal richness gradients be measured in the terrestrial fossil record? *Paleobiology* 43:479–494.
- Fraser, D., C. Hassall, R. Gorelick, and N. Rybczynski. 2014. Mean annual precipitation explains spatiotemporal patterns of Cenozoic mammal beta diversity and latitudinal diversity gradients in North America. *PLoS ONE* 9:e106499.
- Gaston, K. J. 1996. Species-range-size distributions: patterns, mechanisms and implications. *Trends in Ecology and Evolution* 11:197–201.
- . 1998. Species-range size distributions: products of speciation, extinction and transformation. *Philosophical Transactions of the Royal Society B* 353:219–230.
- . 2003. The structure and dynamics of geographic ranges. Oxford University Press, Oxford.
- . 2008. Biodiversity and extinction: the dynamics of geographic range size. *Progress in Physical Geography* 32:678–683.
- Gaston, K. J., and R. A. Fuller. 2009. The sizes of species' geographic ranges. *Journal of Applied Ecology* 46:1–9.
- Gaston, K. J., and J. I. Spicer. 2001. The relationship between range size and niche breadth: a test using five species of *Gammarus* (Amphipoda). *Global Ecology and Biogeography* 10:178–188.
- Goldberg, E. E., L. T. Lancaster, and R. H. Rhee. 2011. Phylogenetic inference of reciprocal effects between geographic range evolution and diversification. *Systematic Biology* 60:451–465.
- Hadly, E. A., P. A. Spaeth, and C. Li. 2009. Niche conservatism above the species level. *Proceedings of the National Academy of Sciences USA* 106:19707–19714.
- Hanson, C. B. 1980. Fluvial taphonomic processes: models and experiments. Pp. 156–181 in A. K. Behrensmeier, and A. Hill, eds. *Fossils in the making*. University of Chicago Press, Chicago.
- Harnik, P. G., C. Simpson, and J. L. Payne. 2012. Long-term differences in extinction risk among the seven forms of rarity. *Proceedings of the Royal Society B* 279:4969–4976.
- Hendricks, J. R., B. S. Lieberman, and A. L. Stigall. 2008. Using GIS to study palaeobiogeographic and macroevolutionary patterns in soft-bodied Cambrian arthropods. *Palaeogeography, Palaeoclimatology, Palaeoecology* 264:163–175.
- Hull, P. M., and S. A. F. Darroch. 2013. Mass extinctions and the structure and function of ecosystems. Pp. 115–157 in A. Bush, S. Pruss, and J. Payne, eds. *Ecosystem paleobiology and geobiology*. Paleontological Society, Boulder, Colo.
- Hull, P. M., S. A. F. Darroch, and D. H. Erwin. 2015. Rarity in mass extinctions and the future of ecosystems. *Nature* 528:345–351.
- Huntley, B., Y. C. Collingham, R. E. Green, G. M. Hilton, C. Rahbek, and S. G. Willis. 2006. Potential impacts of climatic change upon geographical distributions of birds. *Ibis* 148:8–28.
- [IUCN] International Union for Conservation of Nature and Natural Resources. 2015. The IUCN red list of threatened species. Version 2015-4. <http://www.iucnredlist.org>, downloaded on 19 November 2015.
- Jablonski, D. 1987. Heritability at the species level: analysis of geographic ranges of Cretaceous mollusks. *Science* 238:360–363.
- Jablonski, D., and K. Roy. 2003. Geographic range and speciation in fossil and living molluscs. *Proceedings of the Royal Society of London B* 270:401–406.
- Janis, C. M., K. M. Scott, and L. L. Jacobs. 1998. *Evolution of Tertiary mammals of North America, Vol. 1. Terrestrial carnivores, ungulates, and ungulatelike mammals*. Cambridge University Press, Cambridge.
- Jass, C. N., and C. O. George. 2010. An assessment of the contribution of fossil cave deposits to the Quaternary paleontological record. *Quaternary International* 217:105–116.
- Jones, K. E., A. Purvis, and J. L. Gittleman. 2003. Biological correlates of extinction risk in bats. *American Naturalist* 161:601–614.
- Kidwell, S. M., and D. W. Bosence. 1991. Taphonomy and time-averaging of marine shelly faunas. In P. A. Allison, and D. E. G. Briggs, eds. *Taphonomy: releasing the data locked in the fossil record*. Topics in Geobiology 9:115–209. Plenum, New York.
- Kidwell, S. M., and K. W. Flessa. 1996. The quality of the fossil record: populations, species, and communities. *Annual Review of Earth and Planetary Science* 24:433–464.
- Kidwell, S. M., M. M. R. Best, and D. S. Kaufman. 2005. Taphonomic trade-offs in tropical marine death assemblages: differential time averaging, shell loss, and probable bias in siliclastic vs carbonate facies. *Geology* 33:729–732.
- Kiessling, W., and M. Aberhan. 2007. Geographical distribution and extinction risk: lessons from Triassic–Jurassic marine benthic organisms. *Journal of Biogeography* 34:1473–1489.
- Kosnik, M. A., Q. Hua, D. S. Kaufman, and R. A. Wust. 2009. Taphonomic bias and time-averaging in tropical molluscan death assemblages: differential half lives in Great Barrier Reef sediment. *Paleobiology* 35:565–585.
- Kowalewski, M., G. A. Goodfriend, and K. W. Flessa. 1998. High-resolution estimates of temporal mixing within shell beds: the evils and virtues of time-averaging. *Paleobiology* 24:287–304.
- Kowalewski, M., M. Carroll, L. Casazza, N. Gupta, B. Hanniss-Dal, A. Hendy, R. A. Krause, Jr., M. Labarbera, D. G. Lazo, C. Messina, S. Puchalski, T. A. Rothfus, J. Salgeback, J. Stempien, R. C. Terry, and A. Tomašových. 2003. Quantitative fidelity of brachiopod-mollusk assemblages from modern subtidal environments of San Juan Islands, USA. *Journal of Taphonomy* 1:43–65.
- Lewin-Koh, N. J., R. Bivand, E. J. Pebesma, E. Archer, A. Baddeley, H. J. Bibiko, S. Dray, D. Forrest, M. Friendly, P. Giraudoux, D. Golicher, V. G. Rubio, P. Hausmann, K. O. Huffhammer, T. Jagger, S. P. Luque, D. MacQueen, A. Nicolai, T. Short, B. Stabler, and R. Turner. 2011. *maptools: tools for reading and handling spatial objects*. R package, Version 0.8-10. <http://CRAN.R-project.org/package=maptools>.
- Livingston, S. D. 1989. The taphonomic interpretation of avian skeletal part frequencies. *Journal of Archaeological Science* 16:537–547.
- Lyons, S. K. 2003. A quantitative assessment of the range shifts of Pleistocene mammals. *Journal of Mammalogy* 84:385–402.
- Myers, C. E., and B. S. Lieberman. 2010. Sharks that pass in the night: using Geographical Information Systems to investigate competition in the Cretaceous Western Interior Seaway. *Proceedings of the Royal Society of London B* 278:681–689.

- Noto, C. R. 2010. Hierarchical control of terrestrial vertebrate taphonomy over space and time: discussion of mechanisms and implications for vertebrate paleobiology. In P. A. Allison, and D. J. Bottjer, eds. *Taphonomy: process and bias through time*. Topics in Geobiology 32:287–336. Springer, Dordrecht, Netherlands.
- Olszewski, T. 1999. Taking advantage of time-averaging. *Paleobiology* 25:226–238.
- . 2011. Remembrance of things past: modelling the relationship between species' abundances in living communities and death assemblages. *Biology Letters* 8:131–134.
- Olszewski, T., and D. S. Kaufman. 2015. Tracing burial history and sediment recycling in a shallow estuarine setting (Copano Bay, Texas) using postmortem ages of the bivalve *Mulinia lateralis*. *Palaaios* 30:224–237.
- Parnesan, C., N. Ryrholm, C. Stefanescu, J. K. Hill, C. D. Thomas, H. Descimon, B. Huntley, L. Kaila, J. Kullberg, T. Tammaru, W. J. Tennent, J. A. Thomas, and M. Warren. 1999. Poleward shifts in geographic ranges of butterfly species associated with regional warming. *Nature* 399:579–583.
- Pateiro-Lopez, B., and A. Rodriguez-Casal. 2009. Alphahull: generalization of the convex hull of a sample of points in the plane. R package, Version 0.2-0. <http://cran.at.r-project.org/web/packages/alphahull>.
- Payne, J. L., and S. Finnegan. 2007. The effect of geographic range on extinction risk during background and mass extinction. *Proceedings of the National Academy of Sciences USA* 104:10506–10511.
- Pebesma, E. J., and R. S. Bivand. 2005. Classes and methods for spatial data in R. *R News* 5(2). <http://cran.r-project.org/doc/Rnews>.
- Peters, S. E., and N. A. Heim. 2010. The geological completeness of paleontological sampling in North America. *Paleobiology* 36:61–79.
- Plotnick, R. E. F. 2017. Recurrent hierarchical patterns and the fractal distribution of fossil localities. *Geology* 45:295–298.
- Plotnick, R. E., F. Kenig, and A. C. Scott. 2015. Using the voids to fill the gaps: caves, time, and stratigraphy. In D. G. Smith, R. J. Bailey, P. M. Burgess, and A. J. Fraser, eds. *Strata and time: probing the gaps in our understanding*. Geological Society of London Special Publication 404:233–250.
- Plotnick, R. E., F. A. Smith, and S. K. Lyons. 2016. The fossil record of the sixth extinction. *Ecology Letters* 19:546–553.
- Purvis, A., J. L. Gittleman, G. Cowlishaw, and G. M. Mace. 2000. Predicting extinction risk in declining species. *Proceedings of the Royal Society of London B* 267(1456). doi: 10.1098/rspb.2000.1234.
- R Development Core Team. 2015. R: a language and environment for statistical computing. R Foundation for Statistical Computing, Vienna, Austria. <https://www.R-project.org>.
- Raia, P., F. Passaro, D. Fulgione, and F. Carotenuto. 2012. Habitat tracking, stasis, and survival in Neogene large mammals. *Biology Letters* 8:64–66.
- Raup, D. M. 1976. Species diversity in the Phanerozoic: an interpretation. *Paleobiology* 2:289–297.
- Runge, C. A., A. Tulloch, E. Hammill, H. P. Possingham, and R. A. Fuller. 2015. Geographic range size and extinction risk assessment in nomadic species. *Conservation Biology* 29:865–876.
- Saupe, E. E., J. R. Hendricks, R. W. Portell, H. J. Dowsett, A. Haywood, S. J. Hunter, and B. S. Lieberman. 2014. Macroevolutionary consequences of profound climate change on niche evolution in marine molluscs over the past three million years. *Proceedings of the Royal Society of London B* 281:20141995.
- Saupe, E. E., H. Qiao, J. R. Hendricks, R. W. Portell, S. J. Hunter, J. Soberon, and B. S. Lieberman. 2015. Niche breadth and geographic range size as determinants of species survival on geological time scales. *Global Ecology and Biogeography* 24:1159–1169.
- Schnute, J. T., N. Boers, R. Haigh, and A. Couture-Beil. 2008. PBS mapping, Version 2.59.
- Stigall, A. L., and B. S. Lieberman. 2006. Quantitative paleobiogeography: GIS, phylogenetic biogeographic analysis, and conservation insights. *Journal of Biogeography* 33:2051–2060.
- Tomašových, A., and S. M. Kidwell. 2010. The effects of temporal resolution on species turnover and on testing meta-community models. *American Naturalist* 175:587–606.
- [USGS] U.S. Geological Survey. 2017. National hydrography dataset. https://nhd.usgs.gov/NHD_High_Resolution.html, last modified 3 August 2017.
- Walther, G.-R., E. Post, P. Convey, A. Menzel, C. Parmesan, T. J. C. Beebee, J.-M. Fromentin, O. Hoegh-Goldberg, and F. Bairlein. 2002. Ecological responses to recent climate change. *Nature* 416:389–395.
- Willis, J. C. 1922. *Age and area*. Cambridge University Press, Cambridge.
- Yu, J., and F. S. Dobson. 2000. Seven forms of rarity in mammals. *Journal of Biogeography* 27:131–139.