

British School at Athens.

THIS School is designed to give British Students of Greek Archæology and Art the opportunity of pursuing their researches in Greece itself, with command of the means which the recent great advances of the science have rendered indispensable.

Athens is every year becoming more and more the centre of the archæological world. The concentration in the museums there of the numerous and most important discoveries on Greek soil of the last few years has made a personal knowledge of them indispensable to a proper training; they may almost be said to hold a monopoly of the materials for the investigation of prehistoric and early archaic Art. The architecture of Greece can nowhere else be studied to such advantage.

The student requires two auxiliaries when working in Athens—firstly, the command of an adequate library; and secondly, the advice of a trained archæologist residing on the spot, and following the rapid advances of new discovery and the rearrangement of old materials, which often render guides and handbooks almost obsolete as soon as they are published.

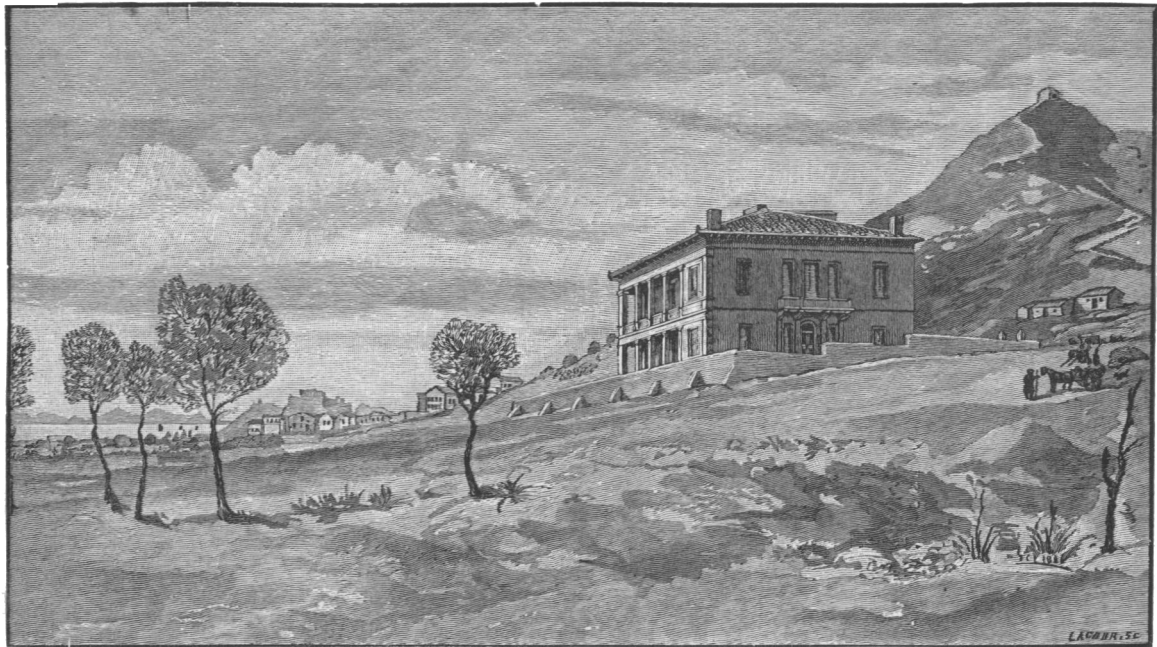
These advantages have for many years been enjoyed by French and German, and more recently by American, archæologists, through the Schools which they have established. It is not too much to say that by means of these institutions alone other nations have been able to carry out the researches in Olympia, Delos, and elsewhere, which quite throw into the shade any similar work done by Englishmen since Sir C. T. Newton's famous researches at Halicarnassus thirty years ago. The excavations carried out in Cyprus and in Greece by the British School during the past nine Sessions are an encouraging proof of the work that may be done in the future if the School is adequately supported.

Any students who bring satisfactory testimonials of their qualifications are admitted to enjoy the use of the library of the School and the advice of the Director free of charge. The conditions imposed are that they shall make a serious and systematic study of some branch of Greek archæology, history, or philology, residing for the purpose not less than three months at Athens (or elsewhere in Greek lands); and that they shall at the end of the session give the Director a report of the work which they have done. Such reports become the property of the Committee of the School, for publication or otherwise as they may think fit. Applications from intending students should be made to the Hon. Sec., G. A. MACMILLAN, Esq., 29, Bedford Street, Covent Garden, London. Mr. MACMILLAN will also be happy to supply any further information.

The present income of the School (if the grant of £500 promised by the Government be included) is about £1,200 a year, of which a considerable part is secured for five years from this date. Substantial aid is still, however, needed to maintain the School in a permanent state of efficiency. Donations or annual subscriptions will be gladly received and acknowledged by the Hon. Treasurer, WALTER LEAF, Esq., 6, Sussex Place, Regent's Park, N.W.

November, 1895.

THE ANNUAL
OF THE
BRITISH SCHOOL AT ATHENS



F. C. PENROSE, *del.* 1886.

O. LACOUR, *sc.*

No. I.

SESSION 1894—5

PRINTED FOR THE SUBSCRIBERS

THE ANNUAL
OF THE
BRITISH SCHOOL AT ATHENS.

SESSION 1894—5.

COMPRISING
THE REPORT OF THE MANAGING COMMITTEE,
AND OF
MEETINGS OF SUBSCRIBERS,
TOGETHER WITH A
SELECTION FROM PAPERS READ AT THE SCHOOL,
AND OTHER COGNATE MATTER.

MANAGING COMMITTEE, 1895—1896.

- EDWIN FRESHFIELD, Esq., LL.D.
PROFESSOR JEBB, Litt.D., LL.D., M.P. } *Trustees.*
PANDELI RALLI, Esq. }
- D. B. MONRO, Esq., Provost of Oriel. Appointed by the
University of Oxford.
- SIDNEY COLVIN, Esq. Appointed by the Hellenic Society.
- PROFESSOR T. CLIFFORD ALLBUTT,
M.D., F.R.S.
MISS JANE E. HARRISON.
WILLIAM LORING, Esq.
J. LINTON MYRES, Esq.
PROFESSOR H. F. PELHAM.
F. C. PENROSE, Esq., F.R.S.
J. E. SANDYS, Esq., Litt.D.
PROFESSOR CHARLES WALDSTEIN, Litt.D. } Appointed by the
Subscribers.
- WALTER LEAF, Esq., Litt.D., *Hon. Treasurer*, 6, Sussex Place,
Regent's Park, N.W.
- GEORGE A. MACMILLAN, Esq., *Hon. Secretary*, 29, Bedford Street,
Covent Garden, W.C.

Bankers.

MESSRS. GLYN, MILLS & Co., Lombard Street.

Director of the School 1895—1897.

CECIL HARCOURT SMITH, Esq., LL.D.

TABLE OF CONTENTS.

	PAGE
PREFATORY NOTE	vii
MEMORIAL TO THE TREASURY AND LIST OF SIGNATURES	ix
PROCEEDINGS OF MEETING AT ST. JAMES'S PALACE, JULY 9TH, 1895	1
PROCEEDINGS OF ANNUAL MEETING OF SUBSCRIBERS, JULY 17TH, 1875	25
BALANCE SHEET	38
DONATIONS AND SUBSCRIPTIONS, 1894-5	40
LIST OF SUBSCRIBERS	42
LIST OF DIRECTORS AND OF STUDENTS, 1894-5	46
RULES AND REGULATIONS OF THE SCHOOL	49

PAPERS.

ARCHÆOLOGY IN GREECE, 1894-5. By E. A. GARDNER	55
SIR CHARLES NEWTON, K.C.B. By E. A. GARDNER	67
ST. PAUL AND THE AREOPAGUS. By Rev. A. F. FINDLAY	78
CRITICISM OF GRUNDY'S PLATÆA. By H. AWDRY	90
NOTE ON MARATHON. By Prof. J. B. BURY	99
THE LATEST DISCOVERIES AT HISSARLIK. By R. CARR BOSANQUET	101
NOTE ON THE TWO TEMPLES AT RHAMNUS. By E. A. GARDNER	110

PLATES.

I. THE PLAIN OF MARATHON, FROM THE TUMULUS	111
II. MARATHON: THE TUMULUS	113
III. THE TEMPLES AT RHAMNUS	115