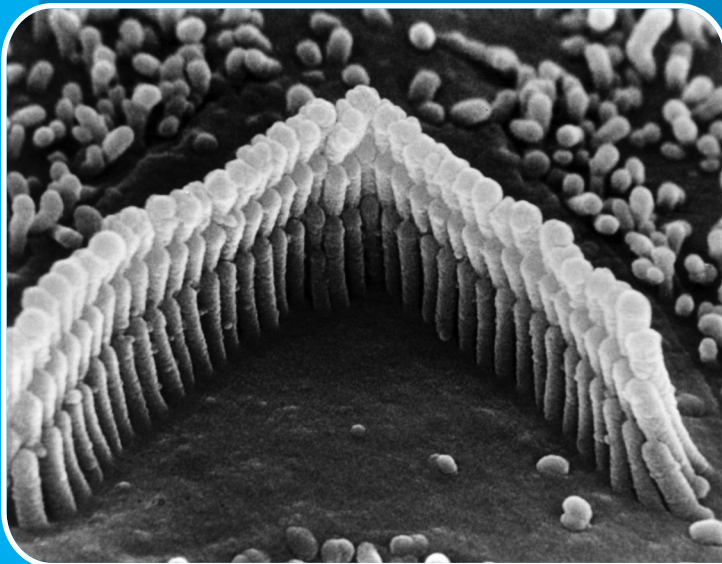


The Journal of
**Laryngology
& Otology**

Australian Supplement

DIGITAL ARCHIVE (1887 TO PRESENT) – **FREE** TO ALL CURRENT SUBSCRIBERS



KEY PAPERS

Micro-ribonucleic acids in head and neck cancer

Active middle-ear implants

Quality of life in rhinosinusitis

Bone-anchored hearing aid insertion - a new method

Papillary thyroid microcarcinoma

Heat injury in anterior skull base surgery



Founded in 1887
By Morell Mackenzie and Norris Wolfenden



ASOHNS
THE AUSTRALIAN SOCIETY
OF OTOLARYNGOLOGY
HEAD AND NECK SURGERY

ASOHNS ASM 2014

29 MARCH – 1 APRIL 2014
BRISBANE CONVENTION AND EXHIBITION CENTRE
BRISBANE QUEENSLAND AUSTRALIA

www.asohns.consec.com.au

Modern Approaches to ENT

Invitation to Attend

Dear Colleagues, as Convenor of the ASOHNS 64th Annual Scientific Meeting, I cordially invite you to attend this meeting from 29 March to 1 April 2014 in Brisbane at the world-class Brisbane Convention and Exhibition Centre, Southbank.

The theme of this year's meeting is **Modern Approaches to ENT** and we have four international speakers confirmed.

Satellite Workshops will include a paediatric airway course, sinus course, implantable hearing aid course and an indigenous ear health meeting.

I look forward to welcoming you all to Queensland in 2014.

Roger Grigg, ASOHNS 2014 ASM Convenor

INTERNATIONAL KEYNOTE SPEAKERS



BENJAMIN EJ HARTLEY MBBS, Bsc, FRCS (ORL-HNS)

Consultant paediatric otolaryngologist at Great Ormond Street Hospital and Honorary Senior lecturer at University College London. He is known for his experience in Cochlear Implants in children and for surgery to remove congenital neck lumps, cysts and tumours. He was listed in *The Times* "Britain's Top Surgeons" in 2011.



JEAN-PIERRE JEANNON MBChB, FRCS (OTO), FRCS (ORL-HNS)

Consultant ENT Head and Neck Surgeon at Guy's and St Thomas' NHS Trust. He is Clinical Lead of the Head and Neck Multi Disciplinary Team at Guy's Hospital and Chairman of the South East London Cancer Network Head and Neck Tumour Working Group. This is now one of the largest head and neck centres in the UK managing over 450 new cases per year.



BRADLEY W KESSER MD, FRCS

Associate professor at University of Virginia. His areas of interest are otology, neurotology, congenital ear malformations, hearing loss, gene therapy for ear disorders and simulation in otological surgery



MICHAEL G STEWART MD, MPH, FRCS

Professor and Chairman of the Department of Otolaryngology Head and Neck Surgery at Weill Medical College of Cornell University, New York. He is the current editor of *Laryngoscope*. Dr Stewart's clinical practice is general otolaryngology, and he has particular interest in nose and sinus disease, sleep breathing disorders, and head and neck trauma.

The Journal of
Laryngology & Otology

Founded in 1887 by Morell Mackenzie and Norris Wolfenden

Australian Supplement

Australian Supplement Editor

A. Simon Carney (Adelaide)

Australian Supplement Editorial Board

Marcus D. Atlas (Perth)

Robert Briggs (Melbourne)

Anders Cervin (Brisbane)

Richard G. Douglas (Auckland)

Peter Friedland (Perth)

Richard M. Gallagher (Sydney)

Scott M. Graham (Iowa City)

Richard Harvey (Sydney)

Stephen O'Leary (Melbourne)

Benedict J. Panizza (Brisbane)

Alkis Psaltis (Adelaide)

Raymond Sacks (Sydney)

Sanjai Sood (Leeds)

Editors

Robin Youngs (Gloucester)

Edward Fisher (Birmingham)

Emeritus Editor

Guy Kenyon (London)

Senior Assistant Editors

Liam Flood (Middlesbrough)

Quentin Gardiner (Dundee)

Vinidh Paleri (Newcastle)

Assistant Editors

Martin Bailey (London)

Jon Bennett (Plymouth)

Abir Bhattacharyya (London)

Brian Bingham (Glasgow)

Sean Carrie (Newcastle)

Kate Evans (Gloucester)

Claire Hopkins (London)

S S Musheer Hussain (Dundee)

Richard Irving (Birmingham)

Andrew Jones (Liverpool)

Nick Jones (Nottingham)

Hisham Khalil (Plymouth)

Bhik Kotecha (London)

Tristram Lesser (Liverpool)

Valerie Lund (London)

Robert Mills (Khon-kaen)

Desmond Nunez (Bristol)

Andrew Prichard (Shrewsbury)

David Proops (Birmingham)

Peter Robb (Epsom)

Mark Samaha (Quebec)

Azhar Shaida (London)

Nick Stafford (Hull)

Iain Swan (Glasgow)

John Watkinson (Birmingham)

Richard Wight (Middlesbrough)

Tim Woolford (Manchester)

Matthew Yung (Ipswich)

Advisers in Audiology

Doris-Eva Bamiou (London)

Linda Luxon (London)

Advisers in Pathology

Simon Rose (Bath)

Ketan Shah (Oxford)

Lesley Ann Smallman (Gloucester)

Adrian Warfield (Birmingham)

Adviser in Radiology

Tim Beale (London)

Adviser in Statistics

Christopher Palmer (Cambridge)

Website Editor

Vik Veer (Newcastle)

Managing Editor

Rosamund Greensted

Unless indicated otherwise, the papers in this Supplement were solicited by the Australian Supplement Editor and approved by the Editors of The Journal of Laryngology & Otology. They were reviewed by the Australian Supplement Editor, and have undergone the standard journal formal peer review process. All papers may be cited; where content has been previously published in a regular Issue of the Journal, citations should be to the original Volume and Issue of publication (see individual paper details, and Table of Contents), and not to this Supplement.

Cover images: Hair bundle of Guinea pig cochlea/Wellcome Photo Library; Fetus on Black by Noel Powell/iStockphoto

Editorial Office: Maybank, Quickley Rise, Chorleywood, Herts WD3 5PE, UK.

Tel/fax: +44 (0)1923 283561. Email: j.l.o@btconnect.com. Website: <http://www.jlo.co.uk>

The Journal of Laryngology & Otology (ISSN 0022-2151) is published monthly in both print and electronic form and distributed on behalf of the proprietors, JLO (1984) Ltd, by Cambridge University Press
Registered Charity No 293063

SUBSCRIPTIONS, LICENSING, ADVERTISING AND REPRINTS

The Journal of Laryngology & Otology (ISSN 0022-2151) is published monthly in both print and electronic form and distributed on behalf of the proprietors, JLO (1984) Ltd, by Cambridge University Press.

Subscriptions: Volume 126, 2012 (Monthly)

Both Standard and Online-only subscription prices entitle subscribers to access all of the archival online content, which dates back to Volume 1 (1887). For further details please go to Cambridge University Press.

Institutions print and electronic: £414/\$827. Institutions electronic only: £356/\$712. Individuals print plus electronic: £219/\$440. Member rates available – please enquire. Special rates available for Trainees. Print ISSN 0022-2151. Electronic ISSN 1748-5460.

Orders are regarded as firm, and payments are not refundable. All orders and enquiries, including online licensing and consortia enquiries, should be sent to: Journals Subscription Department, Cambridge University Press.

*Periodicals postage paid at Rahway, NJ. US Postmaster: send address changes to *The Journal of Laryngology & Otology*, c/o Mercury Airfreight International Ltd, 365 Blair Road, Avenel, NJ 07001, USA.

Advertising sales

Contact: Ad sales, Journals, Cambridge University Press.
Tel: +44 (0)1223 325757
Fax: +44 (0)1223 325801
E-mail: ad_sales@cambridge.org

Other business correspondence

All other business correspondence, should be sent to: Daniel Edwards dedwards@cambridge.org Journals Department, Cambridge University Press. Enquiries about reprints should be sent to Ad sales: special_sales@cambridge.org

© 2012 JLO (1984) Limited

Apart from any fair dealing for the purposes of research or private study, or criticism or review, as permitted under the UK Copyright, Designs and Patents Act, 1988, no part of this publication may be reproduced, stored, or transmitted, in any form or by any means, without the prior permission in writing of the Editors, or in the case of reprographic reproduction in accordance with the terms of licences issued by the Copyright Licensing Agency in the UK, or in accordance with the terms of licences issued by the appropriate Reproduction Rights Organization outside the UK. Enquiries concerning reproduction outside the terms stated here should be sent to the publishers at the above address. Contributors and advertisers are responsible for the scientific content and the views expressed, which are not necessarily those of the Editors or of Cambridge University Press.

Typeset by Techset and printed in Great Britain by Latimer Trend



This Journal issue has been printed on FSC-certified paper and cover board. FSC is an independent, non-governmental, not-for-profit organization established to promote the responsible management of the world's forests. Please see www.fsc.org for information.

SUMMARY GUIDANCE FOR AUTHORS

The Journal of Laryngology & Otology (JLO) is a peer-reviewed publication, and is indexed/abstracted in most major databases including Index Medicus, MEDLINE/ PubMed, Science Citation Index, Current Contents and EMBASE.

Only a very brief summary of the submission requirements is presented here: when preparing their manuscripts, authors must consult and comply with the full Instructions for Authors on the JLO website at <http://www.jlo.co.uk/docs/submittingarticles.htm>. Adherence to these will speed up the editorial process.

All contributions are considered for publication on the understanding that they have been submitted solely to the JLO and that they have not previously been published. Contributions in the following categories will be considered: Main Articles (reporting clinical research or audit), Review Articles, Historical Articles, Short Communications (including 'How I do it'), Clinical Records (case reports), Radiology/Pathology/Oncology in Focus, and Letters to the Editors.

Submission

All contributions must be accompanied by a covering letter, which must be signed by *all* authors. Manuscripts should be submitted to the Editors:

- either *online* via www.jlo.co.uk
- or *by post* to the Editorial Office, *The Journal of Laryngology & Otology*, Maybank, Quickley Rise, Chorleywood, Hertfordshire WD3 5PE, UK (Tel/Fax: +44 (0)1923 283561; E-mail j.l.o@btconnect.com). Three copies should be submitted, one on floppy disk or CD-ROM (including separate TIFF files of any figures) and two printed on paper (together with two sets of figures).

The text of the manuscript (incorporating all tables and the figures legends, but *not* the figures themselves) must be saved as a Microsoft Word document or an RTF file (i.e. 'rich text format'). Use double-spaced, unjustified text throughout. The title page must contain the full title of the paper; the names and qualifications of all authors; the departments(s) and institution(s) where the work was carried out; and the name, postal and e-mail address, and telephone and fax numbers of the author responsible for all communications about the manuscript and proofs. An Abstract (maximum 150 words) and Key words must be provided for all contributions (except Letters).

References should be identified in the text by superscript Arabic numerals and listed at the end of the manuscript in the order in which they are first cited in the text. The tables feature of the word processor should be used to prepare Tables, and both these and the list of Figure legends should appear on separate pages at the end of the manuscript. All Figures must be saved as separate TIFF files at a resolution of 600 dpi.

The authors of all material accepted for publication will be required to assign copyright to JLO (1984) Ltd; a form for this purpose and for ordering offprints will accompany the proofs. The proofs will be sent by e-mail to the corresponding author as a PDF file, and should be corrected and returned within three working days.