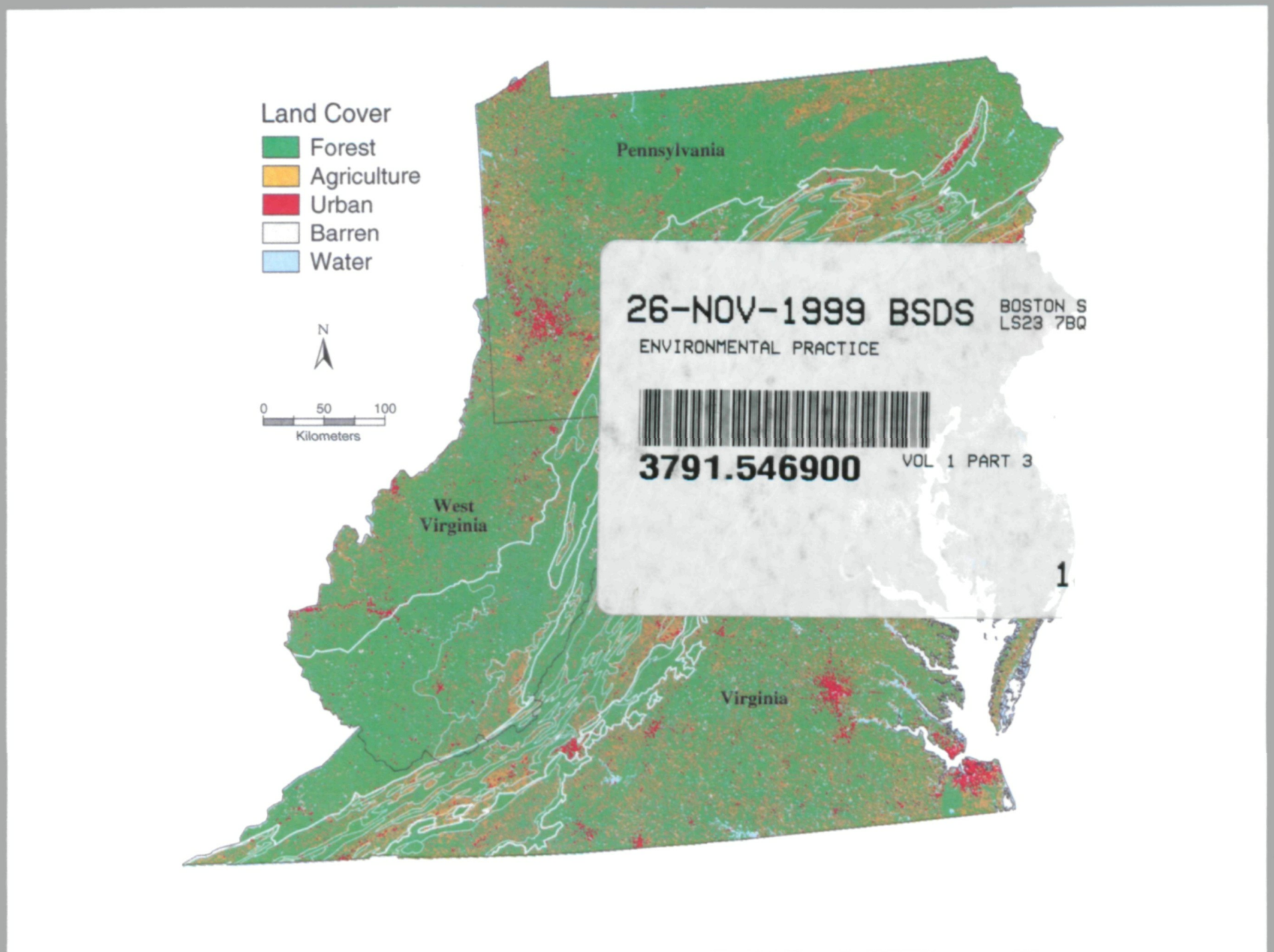


ENVIRONMENTAL PRACTICE

Journal of the National Association of Environmental Professionals

In This Issue: *Ecoregion Framework for Management*



NATIONAL ASSOCIATION OF ENVIRONMENTAL PROFESSIONALS

OXFORD UNIVERSITY PRESS

THE EVERGREEN STATE COLLEGE

ENVIRONMENTAL PRACTICE

Journal of the National Association of Environmental Professionals

Published by Oxford University Press

in cooperation with the Graduate Program in Environmental Studies, The Evergreen State College, Olympia, WA 98505

Editor-in-Chief

John H. Perkins, PhD
The Evergreen State College

Managing Editor

Catherine A. French, PhD
The Evergreen State College

Assistant Editors

Craig Dragovich
Susan Harris
The Evergreen State College

Production Assistants

Bonita Evans & Emily Jelsing
The Evergreen State College

Editorial Office

SEM 3127
The Evergreen State College
2700 Evergreen Pkwy NW
Olympia, WA 98505
(phone) 360-866-6000 ext 5955
(fax) 360-866-6794
(e-mail) frenchca@evergreen.edu

CONTRIBUTING EDITORS

Central Europe

Nicola Ostertag
Neuberstr. 25
01307 Dresden
Germany

Chapter Reports

Bruce Hasbrouck
HDR Engineering, Inc.
5100 West Kennedy Blvd., #300
Tampa, FL 33609-1840

Committee and Working Group Reports

Gary F. Kelman
Maryland Department of the Environment
Water Management Administration
2500 Broening Highway
Baltimore, MD 21224

Educational Affairs and Issues

Cynthia Fridgen, PhD
Resource Development Department
Michigan State University
East Lansing MI 48824-1222

Environmental Health in the Andean Region

José Suárez Torres, MD, PhD
Fundacion Cimas del Ecuador
Ave. America N34-274
PO Box 17-21-942
Quito, Ecuador

Environmental History and Contemporary Affairs

John Opie, PhD
New Jersey Institute of Technology
95 Tahoma Trail
New Buffalo, MI 49117-9196

Environmental Security and Dispute Resolution

Craig B. Davis, PhD
School of Natural Resources
The Ohio State University
Columbus, OH 43210-1085

Ethics

Tom Cuba, PhD, CEP
Delta Seven, Inc.
P.O. Box 3241
St. Petersburg, FL 33731

Former Soviet Union and Eastern Europe

Thomas B. Rainey, PhD
The Evergreen State College

Military Environmental Issues

John J. Fittipaldi, CEP
Army Environmental Policy Institute
Georgia Institute of Technology
430 10th Street NW, Suite S-206
Atlanta, GA 30318-5768

Natural History

Russell Rogers
6637 Glenwood Drive SW
Olympia, WA 98512

Politics

Susan Campbell
2005 Eastside Street NE
Olympia, WA 98506

Solid Waste Management

Marc C. Bruner, PhD
Solid Waste Authority of Palm Beach County
7501 North Jog Road
West Palm Beach, FL 33412

South Asia

D. K. Banerjee, PhD
School of Environmental Sciences
Jawaharlal Nehru University
New Delhi 110 067

Tribal Governments and Minority Cultures

Linda Moon Stumpff, DPA
Alan Parker
The Evergreen State College

ADVISORY BOARD

Michael S. Baram, Esq.
Director, Center for Law and Technology
Boston University School of Law
765 Commonwealth Ave, Rm 866
Boston, MA 02215

Robert Bartlett, PhD
Department of Political Science
Purdue University
West Lafayette, IN 47907

Susan Power Bratton, PhD
Lindaman Center
Whitworth College
Spokane, WA 99251

Donald A. Brown
Rachel Carson State Office Building
400 Market Street
9th Floor
PO Box 8464
Harrisburg, PA 17105-8464

John Cairns, Jr., PhD
Department of Biology
University Center for Environmental and Hazardous Materials Studies
Virginia Polytechnic Institute and State University
Blacksburg, VA 24061-0415

Richard A. Carpenter
Rt. 5, Box 277
Charlottesville, VA 22901

Robert H. Harris, PhD
Environ Corporation
214 Carnegie Center
Princeton, NJ 08540-6284

Carolyn T. Hunsaker, PhD
Oak Ridge National Laboratory
PO Box 2008
Oak Ridge, TN 37831-6038

James L. Jaffe, Esq.
Jaffe, Trutanich, Scatena & Blum
250 Montgomery Street, Suite 900
San Francisco, CA 94104

Burton C. Kross, PhD
Department of Preventive Medicine and Environmental Health
University of Iowa
Iowa City, IA 52242

Charles Malone, PhD, CEP
State of Nevada
Agency for Nuclear Projects
Nuclear Waste Project Office
Capitol Complex
Carson City, NV 89710

Richard McLean, PhD
PTRL Environmental Services
12700 Shelbyville Road
Danville Building
Louisville, KY 40243

Bruce Piasecki, PhD
Rensselaer Polytechnic Institute
110 8th Street
Troy, NY 12180

Edwin Pister
Desert Fishes Council
PO Box 337
Bishop, CA 93514

David Orr, PhD
Environmental Studies Program
Oberlin College
Oberlin, OH 44074-1095

Joseph C. Reinert, PhD
Office of Policy Development
(2123)
US Environmental Protection Agency
401 M Street SW
Washington, DC 20460

David J. Scheaffer
EcoHealth Research Inc.
701 Devonshire Dr. #209
Champaign, IL 61820

Chris Whipple, PhD
ICF Consulting
2101 Webster Street, Suite 1000
Oakland, CA 94612-3060

Environmental Practice is the successor to *The Environmental Professional*, which appeared from 1978-1995. *Environmental Practice* will endeavor to honor the fine traditions established by *The Environmental Professional* while simultaneously opening new avenues of discussion on environmental issues.

CONTENTS

POINTS OF VIEW

<i>J. H. Perkins</i>	EDITORIAL: Darn! Those Aren't the Data I Wanted	113
<i>A. J. McCusker</i>	FROM THE PRESIDENT OF NAEP: Environmental Professionals and Their Association	114
<i>J. Opie</i>	PERSPECTIVE: The Fog of War, the Veil of Ignorance, and Historical Hindsight	115
<i>S. Campbell</i>	PERSPECTIVE: Responses to Global Warming	117

NEWS & INFORMATION

<i>M. J. Rogoff</i>	The Changing Face of Solid Waste Management in the United States	119
<i>R. Sanford</i>	Preparation of Students for Professional Practice: A View from the Trenches	121
<i>N. C. Ostertag</i>	Salmon Back in the Elbe River	125
<i>G. Cook</i>	Governments, Corporations, and Environmental Groups: Who's Telling the Truth about Oil in the Russian Pacific?	126
<i>S. Popova</i>	Bol'shaya Kokshaga Zapovednik Leads the Way in Environmental Education	129
<i>J. A. Roberts</i>	NAEP International Committee Report	130
<i>J. A. Roberts</i>	Report on the 1999 NAEP Annual Meeting	132
	Other News of the Association	136

FEATURES & REVIEWS

<i>S. A. Bryce,</i> <i>J. M. Omernik,</i> & <i>D. P. Larsen</i>	ENVIRONMENTAL REVIEW: Ecoregions: A Geographic Framework to Guide Risk Characterization and Ecosystem Management	141
<i>R. T. Lackey</i>	COMMENTARY: The Savvy Salmon Technocrat: Life's Little Rules	156
<i>T. R. Kelley,</i> <i>P. M. Walker,</i> & <i>K. D. Smiciklas</i>	RESEARCH ARTICLE: Survival of Culturable Bacteria during Co-composting of Institutional, Agricultural, and Municipal Solid Wastes	162
<i>J. A. Griffith</i>	BOOK REVIEW: D. Rapport, R. Costanza, P. Epstein, C. Gaudet, & R. Levins (eds.), <i>Ecosystem Health</i>	168
<i>B. D. Williamson</i>	BOOK REVIEW: Charles H. Eccleston, <i>The NEPA Planning Process: A Comprehensive Guide with Emphasis on Efficiency</i>	169

CONTRIBUTORS

170

On the Cover: Thematic Mapper satellite image of the Appalachian Highlands ecoregions showing correspondence between ecoregion lines (in white) and major landcover areas. Data obtained by the Multiresolution Land Characteristics Consortium and interpreted at the Earth Resources Observation Systems Data Center. Map overlay designed by Suzanne Pierson, OAO Corporation for Bryce et al., pages 141–155 in this issue.

Environmental Practice (ISSN 1466-0466) is a quarterly journal published by Oxford University Press, 2001 Evans Rd., Cary, NC 27513-2009 for the National Association of Environmental Professionals. The editorial office is at The Evergreen State College, Olympia, WA, 98505.

Subscriptions: Subscription is included with membership in the National Association of Environmental Professionals. All other subscriptions include four issues and begin with the first issue of the current volume. The annual rates (Volume 1, 1999) are £55 (UK & Europe), US\$80 (USA & elsewhere) for individuals; £86 (UK & Europe), US\$125 (USA & elsewhere) for institutions. Single issues are available for £17 (UK & Europe), US\$25 (USA & elsewhere) for individuals; £27 (UK & Europe), US\$39 (USA & elsewhere) for institutions. All prices include postage. Individual rates apply only when issues of the journal are sent to a private address and payment is made by personal check or credit card. All requests for subscriptions, single issues or back issues, changes of address, and claims for missing issues should be sent to:

North America: Oxford University Press, Journals Customer Service, 2001 Evans Road, Cary, NC 27513-2009, USA Toll-free in the USA and Canada 800-852-7323 or 919-677-0977. Fax: 919-677-1714. E-mail: jnlorders@oup-usa.org

Elsewhere: Oxford University Press, Journals Customer Service, Great Clarendon St., Oxford OX2 6DP, UK. Tel: +44 1865 267907. Fax: +44 1865 267485. E-mail: jnl.orders@oup.co.uk

Advertising: Contact Journals Advertising at 919-677-0977, x 5256.

Requests for permissions, reprints, and photocopies: All rights reserved; no part of this publication may be reproduced, stored in a retrieval system, or transmitted in any form or by any means, electronic, mechanical, photo-

copying, recording, or otherwise, without either prior written permission of the publisher (Oxford University Press, Journals Special Sales, Great Clarendon St., Oxford OX2 6DP, UK; Tel: +44 1865 267561, fax: +44 1865 267985) or a license permitting restricted copying issued in the USA by the Copyright Clearance Center, 222 Rosewood Drive, Danvers, MA 01923. Fax: 508-750-4744 or in the UK by the Copyright Licensing Agency Ltd., 90 Tottenham Court Road, London W1P 9HE, UK. Reprints of individual articles are available only from the authors.

Copyright: It is a condition of publication in the journal that authors grant exclusive copyright license to the National Association of Environmental Professionals. Requests for permission to reprint material found in the journal should come to Oxford University Press. This ensures that requests from third parties to reproduce articles are handled efficiently and consistently and will also allow the article to be as widely disseminated as possible. Authors may use their own material in other publications provided that the journal is acknowledged as the original place of publication and Oxford University Press is notified in writing and in advance.

Abstracting/indexing: *Environmental Practice* is indexed in *Pollution Abstracts*.

Environmental Practice is printed on acid-free paper that meets the minimum requirements of ANSI Standard Z39.48-1984 (Permanence of Paper). The paper is 100% recycled with 30% post-consumer waste.

Copyright © 1999 National Association of Environmental Professionals

Postal Information: *Environmental Practice* is published quarterly by Oxford University Press, 2001 Evans Road, Cary, NC 27513-2009. Postmaster: Send address changes to *Environmental Practice*, Journals Subscription Department, Oxford University Press, 2001 Evans Rd., Cary, NC 27513-2009, USA.

Mission Statement for *Environmental Practice*

Aims and Scope

Environmental Practice is the official journal and newsletter of the National Association of Environmental Professionals (NAEP). The central purpose of *Environmental Practice* is to provide an open forum to NAEP members and other concerned individuals for the discussion and analysis of significant environmental issues. Research Articles, Environmental Reviews, and Commentaries appearing in *Environmental Practice* are peer-reviewed and aim for the highest standards of professional quality.

Environmental Practice is a source for continuing professional renewal and development. It aims to serve men and women at all stages of their careers, from initial training through mid- and senior-levels. Environmental work is an exciting, dynamic field, and *Environmental Practice* strives to match that pace with lively and timely commentary on the critical issues of the day. *Environmental Practice* aims to provide authoritative discussion on issues of wide interest to the international community of environmental professionals.

Professionals from many different disciplinary backgrounds, working in many different arenas, are faced with developing imaginative approaches for the practical resolution of a wide variety of environmental problems. *Environmental Practice* provides a comprehensive outlet for the publication

of such interdisciplinary findings. This publication actively seeks breadth of viewpoint and method because it holds that solutions to environmental problems are often to be found in understanding the linkages among issues previously considered separate. Periodically, *Environmental Practice* will devote its pages to selected topics of special concern to a significant segment of the readership.

Priority for publication is given to articles that offer insightful views on the importance and interpretation of results from an interdisciplinary perspective. Reports of findings should go beyond a laboratory analysis, a field experiment, a philosophical discussion, or a theoretical modeling, for example, and discuss the implications of the findings for public policy or professional practice. *Environmental Practice* seeks especially to publish studies that link data and findings in science and technology with issues of public policy, health, environmental quality, law, political economy, management, and the appropriate standards for expertise. Many publications achieve excellence through tightly focused specialization, but in contrast *Environmental Practice* seeks its accomplishments through the promotion of excellent research and writing on the common interests among different kinds of specialists.

For the NAEP membership, *Environmental Practice* will carry NAEP news (national and chapter), and brief sketches of representative professional activities and issues. Whenever possible, *Environmental Practice* will seek to draw connections among current events, statements from leaders, pertinent research and scholarship, and NAEP concerns.

Certified Environmental Professional



The Academy of Board Certified Environmental Professionals invites you to call today and find out more about the CEP Program - don't wait!

FUNCTIONAL AREAS

Environmental Assessment includes evaluation of risks to (or past impacts upon) the occupants of ecosystems, workplaces, or residences exerted by physical, chemical, or biological agents to which exposure may occur (or may have occurred).

Environmental Documentation includes preparation of reports, presentation of facts, completion of other actions to establish administrative records demonstrating compliance with environmental statutes, regulations, and permits.

Environmental Operations includes management of facilities in accordance with requirements of environmental statutes, regulations and permits.

Environmental Planning includes arrangement for future facility construction, operation, and/or management in accordance with anticipated requirements of environmental statutes, regulations, and permits (or permit renewals).

Environmental Research and Education includes conducting and reporting on original investigations into the dynamics of environmental phenomena as investigated by oneself and/or other investigators.

MINIMUM REQUIREMENTS

- Bachelor's Degree.
- Minimum of nine years of applicable professional environmental experience. Five of the nine years must be in responsible charge and/or responsible supervision.
- A Master's Degree may be substituted for one year of the nine years of professional experience and a Doctorate for two; however, no such substitutions will apply to the requirement for the five years in responsible charge and/or responsible supervision.

EVALUATION OF APPLICANT

Each applicant is evaluated by seven members of the Certification Review Board, who represent many fields of professional effort (i.e., consulting, academia, private industry, government) in various sections of the country. The Board is responsible for determining the qualifications of each applicant and confers or denies certification based upon the information provided. An interview of the applicant is usually required (generally by telephone).

APPLICATION FEES

Applications must be accompanied by a non-refundable \$125 fee. An additional charge of \$125 is due upon certification. The fees cover all administrative costs, including the certification seal (rubber stamp) and certificate.

CERTIFICATION REVIEW BOARD ROSTER

Ron Abrams, PhD, CEP

Dru Associates
Glen Cove, NY

Ronald G. Alderfer, PhD, CEP

Alderfer Environmental
Homer, AK

Norman W. Arnold, CEP

Consultant
McLean, VA

Joseph A. Atchue, III, CEP, CHMM

PRC Environmental Management, Inc.
Vienna, VA

Patrick E. Baker, CEP

Alameda County Public Works Agency
Hayward, CA

Audrey G. Binder, CEP

Burtonsville, MD

Shirley Ray Denton, PhD, CEP

Biological Research Associates
Tampa, FL

Patricia M. Dooris, PhD, CEP

Department of Environmental Science
Saint Leo College
Saint Leo, FL

Tony E. Eggleston, PhD, CEP

Environmental Consulting Professionals
Cary, NC

John J. Fittipaldi, CEP

Army Environmental Policy Institute
Georgia Institute of Technology
Atlanta, GA

Michael R. Herbaugh

Stafford, VA

Richard J. Kramer, PhD, CEP

AC/S, Environmental Security
Camp Pendleton, CA

Robert A. Michaels, PhD, CEP

RAM TRAC Corporation
Schenectady, NY

John C. Nemeth, PhD, CEP

Oak Ridge Associated Universities
Oak Ridge, TN

Brad Peebles, PhD, CEP

Foster Wheeler Environmental Corporation
Stuart, FL

Dennis R. Poulsen, CEP

California Steel Industries, Inc.
Fontana, CA

James A. Roberts, PhD, CEP

Sacramento, CA

Lloyd Saunders, PhD, CEP

Waldorf, MD

George Wood, CEP

Environmental Professionals, Inc.
Kill Devil Hills, NC

Nancy Zyski, CEP

Environmental Resource Solutions, Inc.
Jacksonville Beach, FL

For Information or an Application:

ABCEP

6524 Ramoth Drive

Jacksonville, FL 32226-3202

904-251-9900, FAX 904-251-9901

Email: naep@ilnk.com Web: www.naep.org

Endorsed By

**The National Association of
Environmental Professionals**

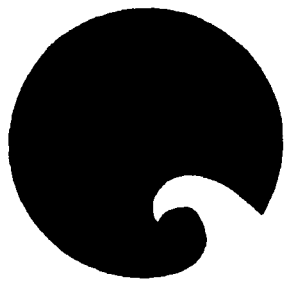
CALL FOR PAPERS

Abstracts due on Oct. 15, 1999

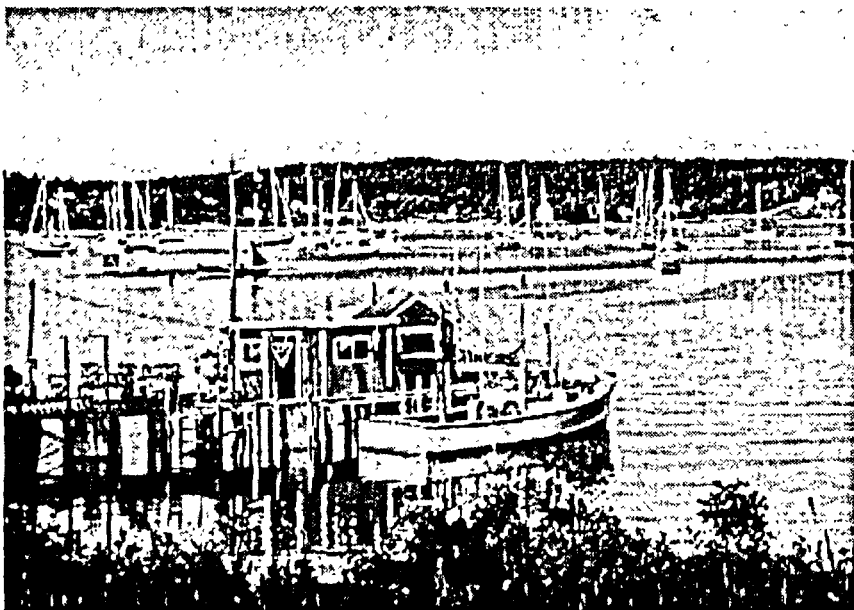
**Seafood
Arts Districts
Waterfront
Museums
Parks
Seminars
Workshops
Networking
Technical Tours
Outdoor Recreation**



NAEP'S 25TH ANNUAL CONFERENCE
"Overcoming Barriers to Environmental Improvement"



Portland, Maine
June 25 - 29, 2000



*For more information contact Lance McCold at
(phone) 423-574-5216
(e-mail) mccoldln@ornl.gov
(web) www.naep.org*

Proposed Tracks

Regulatory Issues
Utilities
NEPA
Transportation
Training & Higher Education
Coastal Zone Management
Environmental Management
Issues for Federal & State Environmental Programs
Place-Based Environmental Management
Public Involvement