

ResAlta Research Technologies

Company Description

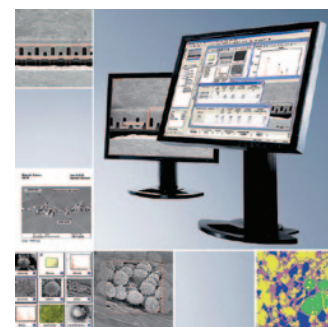
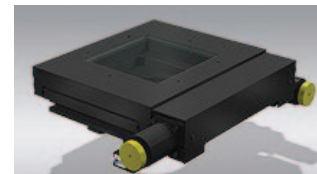
ResAlta Research Technologies was founded in 2010 by Mike Bode and Jason Wickersham and is responsible for the sale and support of all Olympus Soft Imaging Solutions (OSIS) products for Electron Microscopy in the Americas. We work with a range of partners in various countries, from Argentina to Canada. Our products include the highly successful line of side-mount cameras from Olympus (MegaView G2, Veleta), as well as the state-of-the-art line of bottom mount cameras by the same manufacturer (KeenView G2, Cantega G2, Quemesa). We are proud to represent OSIS in the USA directly. Together with the TEM cameras, we sell and support the industry-standard EM software products from Olympus: Scandium (for scanning electron microscopes) and iTEM (for Transmission Electron Microscopes), as well as the various solutions and add-ins (such as a complete Tomography package, Energy filtered TEM package, Stereo packages for SEM, etc.). ResAlta also represents Märzhäuser light microscope stages and products.

List of Products

- **MegaView G2** – High Speed Side-mounted TEM Camera System. This lens-coupled 14-bit camera offers a comprehensive concept composed of the latest in electronics, optics, design, and functionality.
- **Veleta** – 4 MPixel side-mount TEM camera. This camera is ideal for applications where a large field of view is as important as superior resolution and speed.
- **KeenView** – FAST ON-AXIS TEM CCD CAMERA. This fiber-optically coupled 14-bit camera sets benchmarks with its finely balanced blend of electronics, optics, design, and functionality.
- **Cantega G2** – 2k × 2k ON-AXIS TEM CCD CAMERA. This fiber-optically coupled 14-bit YAG-based camera sets new benchmarks regarding resolution, uniformity, and sensitivity for bottom-mounted cameras.
- **Quemesa** – Everything counts: excellent contrast, high sensitivity, high frame rates, and 11 MPixel. This fiber-optically coupled bottom-mount camera provides the ultimate in image quality and functionality.
- **ADDA3** – SEM/STEM scan interface. The ADDA³ is a scan generator for active and passive digital beam control and image acquisition.
- **iTEM** – The premier software platform for TEM. The intuitive software sets new standards with a range of perfectly interacting functions and a flexible and modular structure.
- **iTEM Solution Tomography** – Explore the full information depth of your specimens. Obtain 3-D data from a set of 2-D images—Automatically.
- **Scandium** – The premier software platform for SEM. Scandium is systematically oriented toward the requirements, needs, and workflows of users in the scanning microscopy field.
- **Märzhäuser Light Microscope Stages**—A full complement of light microscope stages, from manual measurement stages to fully automated 4-axis stages, is available for all common microscopes, upright and inverted.

Company Focus

ResAlta Research Technologies focuses on the Microscopy market. Our main focus consists of cameras and software for Transmission Electron Microscopes, and acquisition devices and software for Scanning Electron Microscopes, as well as manual and automated stages for light microscopes. Two decades of experience make us the perfect partner for your imaging needs through expert knowledge of the instruments and applications, courteous customer service, and friendly support.



How to find us

ResAlta Research Technologies Corp.
2102 Beech Ct
Golden, CO 80401
Tel: 303-234-9270
Fax: 303-202-6350
Email: info@ResAltaTech.com
www.ResAltaTech.com

Colorado: 2102 Beech Ct, Golden, CO 80401
New Jersey: 84 E. Grand Ave, Montvale, NJ 07645

For Canada, Mexico, South and Central America, visit our website at http://www.ResAltaTech.com/asp_portal.html and select the nearest representative from the interactive map.