



LOOK AGAIN... LOOK AGAIN...

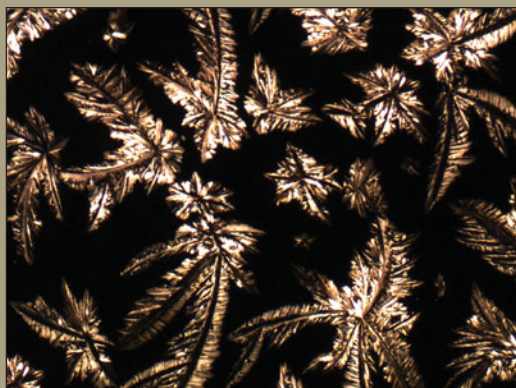
Just for Fun!

See if you can find the 8 differences in each set of images.

Fallen stars

Solution cast poly-1,8-octanedithiol crystals.

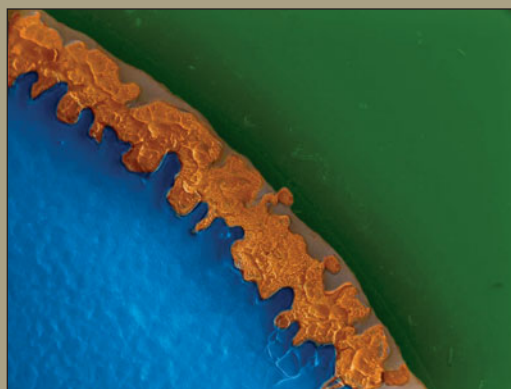
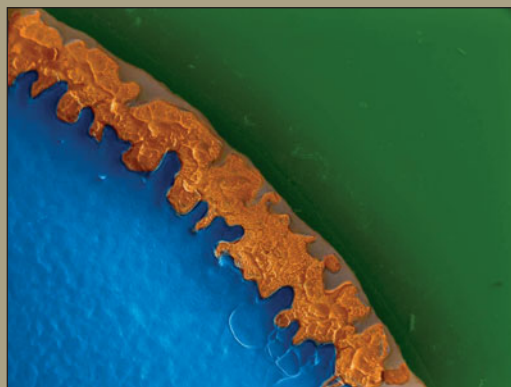
Mengyuan Li, University of Groningen, The Netherlands



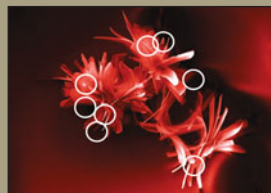
TiO₂ landscape

The blue water and brown sand are a film and irregular edge of agglomerated ~9-nm TiO₂ nanoparticles, collected on a 2-nm porous alumina filter (beige cliffs) mounted in a surrounding polymer membrane (green grass). This secondary electron image was collected via field-emission scanning electron microscopy with an accelerating voltage of 15 kV and a working distance of 8.2 mm.

Vincent Palumbo, Materials Science and Engineering Department, University of Connecticut, USA



August 2015 answer key



The answers will be in the February 2016 issue.

Images on the top were submitted to the Materials Research Society "Science as Art" competition. Images on the bottom were modified in Adobe Photoshop for this "Look Again" activity.