

ICHE Call for Papers: Diversity, Equity, and Inclusion in Healthcare Epidemiology, Infection Prevention and Control, and Antimicrobial Stewardship

Infection Control & Hospital Epidemiology (ICHE) is **calling for papers** that address the topics of diversity, equity, and inclusion (DEI) in healthcare epidemiology, infection prevention and control, and antimicrobial stewardship. We invite submission of Original Articles, Concise Communications, and Research Briefs that seek to identify, understand, and eliminate disparities in health outcomes, healthcare practices, and opportunities that arise from demographic factors, structural racism and socially determined circumstances. We are interested in papers that investigate the effect of such disparities on patients as well as the healthcare workforce.

Papers should be submitted as soon as possible, with a deadline of **November 18, 2022**. All submitted papers will be assessed by the Editor and, if suitable, by independent reviewers, including members of the Society for Healthcare Epidemiology of America's DEI Committee. Accepted papers will be published online upon acceptance and subsequently in an issue of the journal. Additionally, papers will be included in an **online collection** which will serve as an easily accessible repository for these and other DEI-related papers published in *ICHE*.

Papers should be submitted to the journal in the usual way. The cover letter should specify that the manuscript addresses DEI and that the manuscript is being submitted in response to this call for papers. Instructions for authors, including formatting requirements and manuscript submission, can be found on the **ICHE website**.

We look forward to receiving papers on these important topics. Do not hesitate to contact me if you wish to discuss a potential submission or any other issue related to this call for papers.

David P. Calfee, MD, MS,

Editor-in-Chief, *Infection Control & Hospital Epidemiology*

Medicine

Books and Journals from
Cambridge University Press

The Cambridge Medicine programme focuses its book publishing in a defined set of core clinical areas with our great strength in the clinical brain sciences. Other specialties of significant focus include reproductive medicine/obstetrics and gynaecology, anaesthesia and critical care, emergency medicine and pathology.

Our journals programme covers a broad spectrum of medical disciplines including emergency and disaster medicine, epidemiology and infectious diseases, biomedical science, genetics, nutrition, mental health and psychiatry, and neuroscience.

We partner with many learned societies including The Society for Healthcare Epidemiology of America, the Neuroscience Education Institute, and the Royal College of Obstetricians and Gynaecologists.

For further details visit:

[cambridge.org/core-medicine](https://www.cambridge.org/core-medicine)

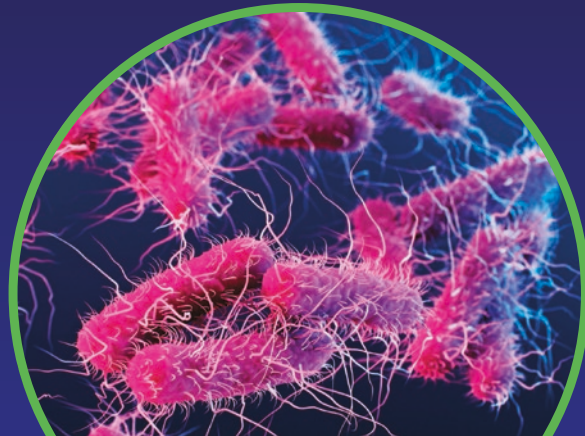
Cambridge
Core



CAMBRIDGE
UNIVERSITY PRESS

ASHE

Antimicrobial Stewardship & Healthcare Epidemiology



The Society for Healthcare Epidemiology (SHEA) and Cambridge University Press are pleased to announce the launch of a new, open access journal, *Antimicrobial Stewardship and Healthcare Epidemiology (ASHE)*.

ASHE will publish submissions of original research that will contribute to the fields of antimicrobial stewardship, healthcare epidemiology and infection prevention with the goal of improving healthcare safety globally.

[cambridge.org/ashe](https://doi.org/10.1017/che.2022.228)



CAMBRIDGE
UNIVERSITY PRESS