

## Review/Meta-analysis

**Cite this article:** Shen Y.-Q., Zhou H.-X., Chen X., Castellanos F.X., and Yan C.-G. (2020)

Meditation effect in changing functional integrations across large-scale brain networks: Preliminary evidence from a meta-analysis of seed-based functional connectivity. *Journal of Pacific Rim Psychology*, Volume 14, e10. <https://doi.org/10.1017/prp.2020.1>

Received: 8 July 2019

Revised: 19 December 2019

Accepted: 22 December 2019

### Keywords:


meditation; functional connectivity; brain networks; default mode network; meta-analysis

### Author for correspondence:

Chao-Gan Yan, Email: [ygc.yan@gmail.com](mailto:ygc.yan@gmail.com)

<sup>†</sup>These authors contributed equally to this study.

# Meditation effect in changing functional integrations across large-scale brain networks: Preliminary evidence from a meta-analysis of seed-based functional connectivity

Yang-Qian Shen<sup>1,†</sup>, Hui-Xia Zhou<sup>1,2,3,†</sup>, Xiao Chen<sup>1,2,3</sup>,  
Francisco Xavier Castellanos<sup>5,6</sup> and Chao-Gan Yan<sup>1,2,3,4,5</sup> 

<sup>1</sup>CAS Key Laboratory of Behavioral Science, Institute of Psychology, Beijing, China; <sup>2</sup>Department of Psychology, University of Chinese Academy of Sciences, Beijing, China; <sup>3</sup>International Big-Data Center for Depression Research, Institute of Psychology, Chinese Academy of Sciences, Beijing, China; <sup>4</sup>Magnetic Resonance Imaging Research Center, Institute of Psychology, Chinese Academy of Sciences, Beijing, China; <sup>5</sup>Department of Child and Adolescent Psychiatry, NYU Grossman School of Medicine, New York, NY, USA and <sup>6</sup>Nathan Kline Institute for Psychiatric Research, Orangeburg, NY, USA

## Abstract

Meditation is a type of mental training commonly applied in clinical settings and also practiced for general well-being. Brain functional connectivity (FC) patterns associated with meditation have revealed its brain mechanisms. However, the variety of FC methods applied has made it difficult to identify brain communication patterns associated with meditation. Here we carried out a coordinate-based meta-analysis to get preliminary evidence of meditation effects on changing brain network interactions. Fourteen seed-based, voxel-wise FC studies reported in 13 publications were reviewed; 10 studies with seeds in the default mode network (DMN) were meta-analyzed. Seed coordinates and the effect sizes in statistically significant regions were extracted, based on 170 subjects in meditation groups and 163 subjects in control groups. Seed-based d-mapping was used to analyze meditation versus control FC differences with DMN seeds. Meditation was associated with increased connectivity within DMN and between DMN and somatomotor network and with decreased connectivity between DMN and frontoparietal network (FPN) as well as ventral attention network (VAN). The pattern of decreased within-DMN FC and increased between-network FC (FPN and DAN with DMN) was more robust in highly experienced meditators compared to less experienced individuals. The identified neural network interactions may also promote meditation's effectiveness in clinical interventions for treating physical and mental disorders.

Meditation is a means of regulating emotion and attention, developed for diverse applications and used for thousands of years (Lutz, Slagter, Dunne, & Davidson, 2008). Numerous studies have investigated the effectiveness of meditation in various domains. Meditation has been suggested to have a potential therapeutic role in treating physical and mental disorders, including chronic pain (Goldberg et al., 2018), anxiety disorders (Hofmann, Sawyer, Witt, & Oh, 2010), depression (Goyal et al., 2014; Hofmann et al., 2010) and eating disorders (Kristeller and Hallett, 1999). In addition, positive effects of meditation in reducing smoking (Goldberg et al., 2018) and improving insomnia (Ong, Shapiro, & Manber, 2008) have been reported. Conducting regular meditation practice is regarded as a component of a healthy lifestyle in many cultures.

As meditation has become more popular, interest in understanding the underlying mechanisms has grown. A meta-analysis of brain structure found that meditation is related to structural alterations of brain regions involved in metacognition (frontopolar cortex), exteroceptive and interoceptive awareness (insula), emotion regulation (cingulate cortex) and memory processing (hippocampus; Fox et al., 2014). Meta-analyses of functional activation/deactivation have also identified activations of these regions along with the recruitment of supplementary motor area (Boccia, Piccardi, & Guariglia, 2015; Fox et al., 2016; Tomasino, Fregona, Skrap, & Fabbro, 2012). Meditation has also been reported to change functional integration among anatomically distinct brain regions (Fox et al., 2016). However, a systematic meta-analysis on meditation effects on large-scale brain functional networks has yet to be performed.

## Summary of types of meditation

Meditation types differ in their underlying principles. For example, mindfulness meditation, one of the most widely practiced types, emphasizes attending to the present moment and nonjudgmental awareness (Brown & Ryan, 2003; Gu, Strauss, Bond, & Cavanagh, 2015;

© The Author(s), 2020. Published by Cambridge University Press. This is an Open Access article, distributed under the terms of the Creative Commons Attribution-NonCommercial-ShareAlike licence (<http://creativecommons.org/licenses/by-nc-sa/4.0/>), which permits non-commercial re-use, distribution, and reproduction in any medium, provided the same Creative Commons licence is included and the original work is properly cited. The written permission of Cambridge University Press must be obtained for commercial re-use.

Kabat-Zinn, 2009). It differs from loving-kindness and compassion meditation (LKCM), which focuses on intensifying empathic mental responses, promoting positive emotions and encouraging altruistic thoughts (Lutz *et al.*, 2008; Zeng, Chiu, Wang, Oei, & Leung, 2015). Mindfulness meditation can be subcategorized into mindfulness-based stress reduction (MBSR) and mindfulness-based cognitive therapy (MBCT). Both have been validated as therapeutically efficacious in treating physical and psychiatric disorders in experimental and clinical settings (Chiesa & Serretti, 2010; Fjorback, Arendt, Ornbol, Fink, & Walach, 2011; Goldberg *et al.*, 2018). Meditation can also be classified in terms of the technique applied, such as focused attention (FA), open monitoring (OM), or LKCM (Fox *et al.*, 2016; Lippelt, Hommel, & Colzato, 2014). Additionally, distinctions among Zen meditation, Tibetan Buddhism meditation and Vipassana meditation are related to cultural or religious considerations.

Although types of meditation can be further subdivided, most share the common goal of involving mental training to induce relaxation, adjust emotions, enhance attentional processes, regulate self-awareness, maintain nonjudgmental awareness, and detach from external stimuli. Also, most meditation practices employ similar approaches (Andresen, 2000) that are intrinsically related (Hofmann, Grossman, & Hinton, 2011). For instance, both mindfulness and LKCM incorporate aspects of Buddhist tradition that promote deliberate intention (e.g., breath and mantra recitation) and processing emotional state (e.g., suffering, empathy, and love; Kuhlman, 2001). FA and OM practices are key elements of mindfulness meditations, as noted by many scholars and practitioners (Britton *et al.*, 2018; Lutz *et al.*, 2008). In a sense, LKCM can be considered a form of FA if the meditative object comes from the targeted person, and it also can be considered a form of OM if no concrete object is needed (Fox *et al.*, 2014). In the field of neuroimaging, previous meta-analysis studies have combined multiple types of meditations due to their fundamental similarities (Boccia *et al.*, 2015; Fox *et al.*, 2014; Tomasino *et al.*, 2012). Thus, we restricted the types of meditation in this meta-analysis to those that share similar features (mindfulness, loving kindness, breath/attention focused meditation and Zen meditation) to decrease the heterogeneity of studies included.

### Current research on meditation

Why and how does meditation affect people's emotional, cognitive and behavioral performance? Many researchers have tried to explain meditation's positive effects from a neurobiological perspective. Many studies have shown that the structural architecture and functional organization of the human brain change with experience and in response to systematic learning (Casey, Tottenham, Liston, & Durston, 2005; Kelly & Garavan, 2005), both of which are intensively involved in meditation (Slagter, Davidson, & Lutz, 2011).

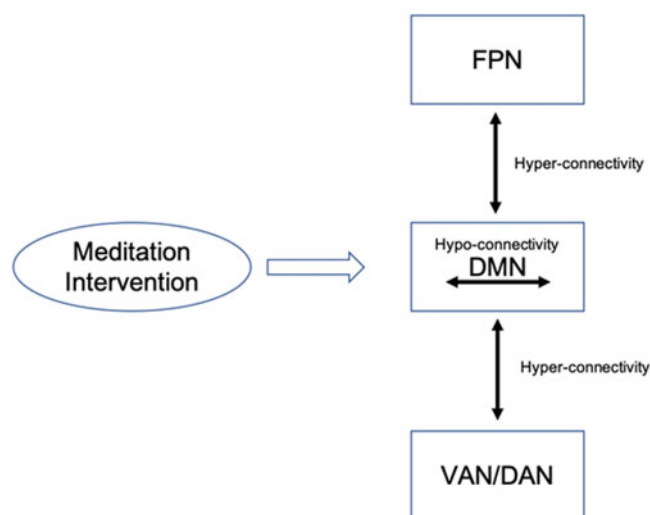
In recent years, magnetic resonance imaging (MRI) studies have suggested that meditation practice can modify brain structures, especially in regions involved in self-referential processing (Boccia *et al.*, 2015). Functional MRI (fMRI) studies have also focused on the effects of meditation on brain function, using approaches inside and outside the scanner. Fox and colleagues (2016) explored brain activation and deactivation across multiple meditation categories and found that insula activation was observed in all main types of meditations, suggesting its vital role of promoting interoceptive awareness (Craig, 2003, 2009; Critchley, Wiens, Rotshstein, Ohman, & Dolan, 2004; Menon & Uddin, 2010) and empathy (Lamm, Decety, & Singer, 2011;

Menon & Uddin, 2010; Singer, Critchley, & Preuschoff, 2009). Activations of the premotor cortex and supplementary motor area were also observed in meditators (Boccia *et al.*, 2015; Fox *et al.*, 2016; Tomasino *et al.*, 2012), explained by their involvement in mental manipulation (Hanakawa *et al.*, 2002; Nachev, Kennard, & Husain, 2008).

Activated brain regions are increasingly viewed as components of large-scale brain networks. Among these, the default mode network (DMN) has been most frequently examined in meditation (Taylor *et al.*, 2013). The DMN is a distributed brain network that is frequently deactivated during goal-oriented tasks and is active during wakeful rest (Fox *et al.*, 2005). Involvement of the DMN has been revealed in studies of episodic memory, autobiographical process, self-reference, theory of mind, social evaluations and mind wandering (Andrews-Hanna, 2012; Buckner, Andrews-Hanna, & Schacter, 2008; Sestieri, Corbetta, Romani, & Shulman, 2011; Spreng & Grady, 2009; Svoboda, McKinnon, & Levine, 2006). Meditation-associated activations of DMN regions, including the precuneus, ACC and angular gyrus, were shown in Boccia and colleagues' (2015) analysis, but the opposite result was found by others (Fox *et al.*, 2016; Tomasino *et al.*, 2012). Deactivation of the DMN is consistent with the meditation practices of bringing the wandering mind back to the present moment (Schacter, Addis, & Buckner, 2007; Tomasino *et al.*, 2012) and of weakening self-referential processing (Goldin, Ramel, & Gross, 2009; Manna *et al.*, 2010).

Patterns of brain activation in response to a specific task inform on the neurobiological correlates of meditation, but their focus on specific loci does not capture the distributed nature of information processing. Functional connectivity (FC) examines the temporal correlations of spontaneous low-frequency blood oxygen level-dependent (BOLD) signal fluctuations between anatomically distinct areas (Biswal, 2012; Friston, Williams, Howard, Frackowiak, & Turner, 1996) to characterize brain neural networks and their interactions with state-dependent activity (Buckner *et al.*, 2008; Gopinath *et al.*, 2011; Kilpatrick *et al.*, 2011).

Studies of FC investigating meditation, either in resting state or during meditation, have been growing. Some studies have compared FC before and after meditation practice and others have contrasted experienced meditators and novices. In between-network FC analyses, meditation has been associated with relatively increased FC between DMN and frontoparietal network (FPN), especially the regions implicated in cognitive regulation and self-monitoring, such as the dorsolateral prefrontal cortex (dlPFC; Brewer *et al.*, 2011; Creswell *et al.*, 2016; Hasenkamp & Barsalou, 2012), superior frontal gyrus (SFG; Creswell *et al.*, 2016) and inferior parietal lobule (IPL; Hasenkamp & Barsalou, 2012; Yang *et al.*, 2016). At the within-network level, meditation training has been linked with increased FC within the dorsal attention network (DAN; Froeliger *et al.*, 2012), that is, regions recruited when attention is turned to the external world (Corbetta, Patel, & Shulman, 2008). Also, decreased FC within the somatomotor network (SMN) and salience network (SN) were found postmeditation training (Cotier, Zhang, & Lee, 2017). Greater FC within auditory and visual networks in experienced meditators than controls was reported in one study (Kilpatrick *et al.*, 2011) but not in another (Berkovich-Ohana *et al.*, 2016). Stronger FC between DMN and medial prefrontal cortex (mPFC), one of the key DMN regions, was found after meditation practice (Jang *et al.*, 2011), but the opposite result, of decreased FC within the DMN, has also been reported in several studies (Berkovich-Ohana, Harel, Hahamy, Arieli, & Malach, 2016; Cotier *et al.*, 2017; Hasenkamp & Barsalou, 2012; Yang *et al.*, 2016).



**Figure 1.** Schematic of our hypothesis.

Note: DMN: default mode network; FPN: frontoparietal network; DAN: dorsal attention network; VAN: ventral attention network.

Length of meditation experience has also been examined. Increased FC within DAN was found in experienced meditators (Froeliger et al., 2012; Hasenkamp & Barsalou, 2012). Intra-DMN FC has been negatively correlated with the number of years meditating (Berkovich-Ohana et al., 2016). Froeliger and colleagues (2012) found that meditation experience predicted increasing FC between DMN and DAN both during resting state and meditation state.

Although meta-analyses of brain structure and functional activations have reached some consensus about the neurobiological processes involved in meditation, no summary on how meditation alters FC across brain networks has been performed. To address the ostensibly simple question “How does meditation affect the interactions of the human brain within and across networks?”, we reviewed all existing FC studies related to meditation and conducted a coordinate-based meta-analysis to lessen bias and mitigate the lack of statistical power entailed by small sample size studies. Considering the specific role of the DMN in meditation effects, this meta-analysis is focused on whether meditation changes functional integration within DMN and between the DMN and other networks. The DMN is usually regarded as being related to self-referential processing, which could be weakened by the meditation practice of focusing on the present moment. To monitor self-referential thinking, regulate attention and control the cognitive process, the involvement of FPN and attention networks (VAN/DAN) may be necessary. The FPN plays an important role in distributing attention (Corbetta & Shulman, 2002), while the DMN is involved in attending internally instead of to the outside (Raichle, 2015). Based on the relationship between the functions of each brain network and the internal mechanism of meditation, we hypothesized that meditation would be associated with significantly increased FC across certain brain networks (DMN-FPN and DMN-VAN/DAN), along with decreased functional connectivity within DMN, as demonstrated in Figure 1.

Common coordinate-based activation meta-analysis is not typically suitable for functional connectivity measures, as the seeds vary so much across studies (Eickhoff et al., 2009; Tahmasian et al., 2019; Turkeltaub, Eden, Jones, & Zeffiro, 2002). By selecting studies that used seeds in a common brain network, we assumed that meta-analytical results from these studies could be regarded as the regions co-activated or co-deactivated with these certain brain network areas, which were represented

by the corresponding seeds. This assumption had been confirmed by previous studies. For instance, Di, Gohel, Kim, and Biswal (2013) tested the task-related network through meta-analytic connectivity modeling (MACM) method to find the brain network’s reconfiguration between resting-state and task conditions. This method was also applied to investigate the brain network interactions associated with major depressive disorder (Kaiser, Andrews-Hanna, Wager, & Pizzagalli, 2015). In our study, following Kaiser et al. (2015), we exclusively selected studies that placed their seeds within the DMN. This criterion significantly reduced the sample size of the current study, balanced by the benefit of homogeneity of seed placement. In addition, other alternative analytic methods, such as ICA, were not feasible to be analyzed systematically, because relatively few prior studies of meditation effects on FC have implemented these methods. Against this background, we believe there is value in presenting our preliminary results and to withhold definitive interpretation pending future independent replication as the related literature grows over time. Thus, the coordinate-based meta-analysis is utilized to confirm or falsify our hypothesis.

To further examine our hypotheses, we also conducted a meta-regression analysis of voxel values across studies in terms of average length of meditation experience of the corresponding samples to capture effects of mean meditation experience duration. We expected our hypothesized FC differences to be related to the duration of meditation experience, with stronger effects in highly experienced meditators than in those with less experience. To the best of our knowledge, this is the first meta-analysis focusing on FC results to explore the underlying neurobiological mechanisms of meditation practice.

## Method

### Literature search

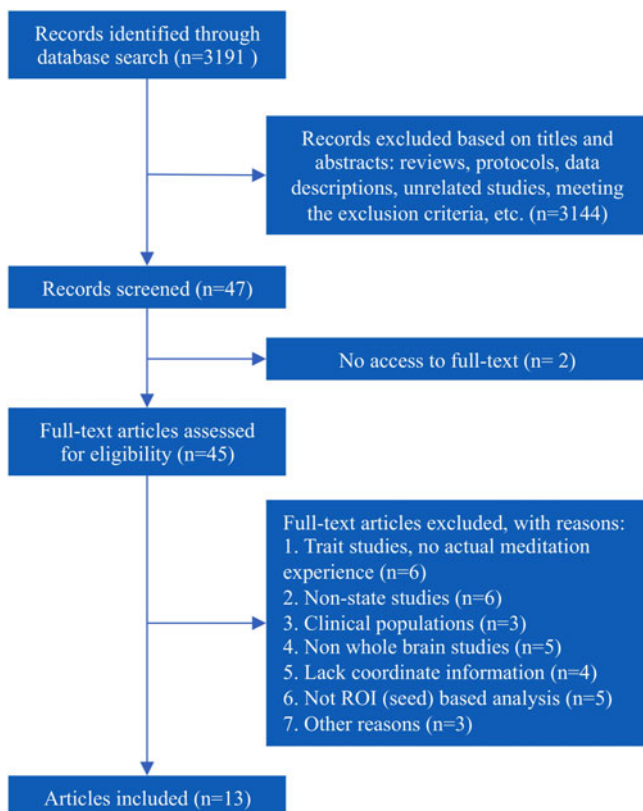
A literature search was performed using the keywords: “meditation” AND “MRI” AND “functional connectivity” in PubMed, ScienceDirect, ResearchGate, Scopus, Web of Science, NeuroSynth, and Google Scholar databases through September 24, 2019. The flowchart of the search strategy and included studies are shown in Figure 2. The following criteria were used to exclude unrelated studies: (1) only studies that computed whole-brain FC were included; (2) only studies that reported coordinates either in Talairach or Montreal Neurological Institute (MNI) space were included; (3) only studies that focused on state-related (e.g., resting state, meditation state) research were included. Task-related studies were excluded due to their diverse designs; (4) only studies that used participants with real meditation training or experience were included, and studies that explored meditation traits were excluded; (5) only studies that were published in a peer-reviewed journal were included; (6) only noncase studies and those testing nonclinical populations were included. After applying these criteria, 14 studies from 13 articles were chosen. Table 1 presents the details of each study.

The selected studies used one of two designs. Specifically, some studies focused on the intensive and short-term effects of meditation on brain changes by comparing the difference between pretraining and posttraining results for subjects without previous meditation experience, referred to as the within-subject design. Between-subject studies compared experienced meditators to nonmeditators. These two designs have been applied by researchers to study meditation effects on brain structure and

**Table 1.** Summary of fMRI studies included in meta-analysis ( $N = 10$ )

Study	Design	N (M/C)	Meditation type	Average experience	Revised experience (hours) <sup>§</sup>	Scanning state
*Brewer <i>et al.</i> (2011)	Between subject	12/12	Mindfulness (FA+OM+LK)	10,565 ± 5148 hours	10,565	Resting
*Brewer <i>et al.</i> (2011)	Between subject	12/12	Mindfulness (FA + OM + LK)	10,565 ± 5148 hours	10,565	Meditation
Creswell <i>et al.</i> (2016)	Factorial	17/17	MBSR	3 days; intense residential program	12.5	Resting
Garrison <i>et al.</i> (2014)	Factorial	20/26	Theravada/insight meditation; Loving kindness	9675 ± 1586 hours	9675	Meditation
Hasenkamp & Barsalou (2012)	Between subject	5/9	Buddhist tradition/breath focus meditation	3066.4 ± 525 vs. 452.9 ± 390.9 hours	2613.5	Resting
Hernandez <i>et al.</i> (2018)	Between subject	23/23	Sahaja Yoga Meditation	14.1 ± 6.1 years	7265	Resting
Jang <i>et al.</i> (2011)	Between subject	35/33	Brain-wave vibration meditation	39.88 ± 25.58 months	549.5	Resting
Pagnoni (2012)	Between subject	12/12	Zen meditation	>3 years	3000	Meditation
Shao <i>et al.</i> (2016)	Factorial	21/19	Attention-based compassion meditation	8 weeks	28.33	Resting
Yang <i>et al.</i> (2016)	Within subject	13/-	MBSR	418.07 ± 71.45 minutes; 40 days;	6.97	Resting

Note: Fourteen studies from 13 publications compared meditators to controls (between-subject), postmeditation training to premeditation training (within-subject); studies from the same article were marked with “\*”; Four studies (Chen *et al.*, 2015; Farb *et al.*, 2007; Liu *et al.*, 2018; Taren *et al.*, 2015) which did not include default mode network seeds were excluded from statistical analysis. FA = focused attention, OM = open monitoring, LK = loving kindness, MBSR = mindfulness-based stress reduction. Revised experience (hours)<sup>§</sup>: the length of meditation experience in each study was reported in different ways (years, weeks, days, and hours). To make them comparable, all data were converted to hours.

**Figure 2.** Flowchart of the study selection process.

activation/deactivation patterns, as well as FC. We concluded that the two designs could be combined in a meta-analysis since both focus on the same research question, namely, the effects of meditation training of brain functional connectivity. This

combination method has been adopted in other neuroimaging meta-analysis of meditation effects (Boccia *et al.*, 2015; Fox *et al.*, 2014; Tomasino *et al.*, 2012).

### Data extraction and coding

The current meta-analysis is based on peak coordinates, which represent the brain areas showing significant differences in FC with seed region-of-interests (ROIs) between meditation and control samples or postmeditation versus premeditation states. We first extracted the coordinates of each seed ROI and the peak of each effect region. All peaks in Talairach space were transformed into MNI space. Second, each seed ROI was categorized into a seed network according to Yeo's 7-network parcellation (Yeo *et al.*, 2011; Table 2; Figure 3). From the 14 studies, we only selected studies that had placed seeds in the DMN, resulting in 10 studies from 9 articles, which were entered into the final statistical analysis: 7 meditator versus nonmeditator (one of them compared highly experienced meditators versus meditators with low experience) and 3 postmeditation versus premeditation. All these studies investigated FC within the DMN and between the DMN and other networks. Third, coordinates were extracted for the following conditions, meditators versus controls, controls versus meditators, postmeditation versus premeditation, premeditation versus postmeditation. We collectively refer to these comparisons as meditation versus control.

### Statistical analysis

We used Signed Differential Mapping (SDM) software (Radua, Mataix-Cols *et al.*, 2012) to meta-analyze brain areas with statistically significant FC with DMN seeds. SDM has become widely used in neuropsychiatric research (Bora *et al.*, 2011; Radua, Borgwardt *et al.*, 2012); detailed description can be found elsewhere (Radua, Borgwardt *et al.*, 2012; Radua & Mataix-Cols, 2009, 2012). Briefly,



**Table 2.** Summary of seed-networks and anatomical regions of studies included in meta-analysis ( $n = 14$ )

Study	Networks and direction of comparison									
	SMN		FPN		Limbic		DMN		Not in 7 networks	
	M > C	M < C	M > C	M < C	M > C	M < C	M > C	M < C	M > C	M < C
Brewer et al. (2011)							PCC	PCC mPFC		
Brewer et al. (2011)							PCC	PCC mPFC		
Chen et al. (2015)			dmPFC							
Creswell et al. (2016)							PCC	PCC		
Farb et al. (2007)	Insula	Insula								
Garrison et al. (2014)							PCC/PCu	PCC/PCu		
Liu et al., (2018)									dIPFC	dIPFC
Hasenkamp & Barsalou (2012)			dIPFC rPPL	dIPFC rPPL			mPFC ACC PCC vmPFC	mPFC ACC PCC vmPFC		
Hernandez et al. (2018)							rACC mPFC			
Jang et al. (2011)							PCC mPFC			
Pagnoni (2012)							vPMC	vPMC		
Shao et al. (2016)							PCC/PCu	PCC/PCu		
Taren et al. (2015)					Amygdala	Amygdala				
Yang et al. (2016)							pgACC	pgACC	dACC	dACC

Note: Seed regions-of-interest (ROIs) were categorized into seed-networks based on their location within a priori functional networks including frontoparietal network (FPN), somatomotor network (SMN), default mode network (DMN), and limbic system. The other three networks that belongs to Yeo's 7 network model but not shown above include visual network (VN), ventral attention network (VAN), and dorsal attention network (DAN); anatomical regions in which seed ROIs were located included insula, dorsal medial prefrontal cortex (dmPFC), dorsolateral prefrontal cortex (dlPFC), right posterior parietal lobule (rPPL), dorsal anterior cingulate cortex (dACC), posterior cingulate cortex (PCC), Precuneus (PCu), medial prefrontal cortex (mPFC), anterior cingulate cortex (ACC), ventral medial prefrontal cortex (vmPFC), ventral posteromedial cortex (vPMC), pregenual anterior cingulate cortex (pgACC), amygdala. To ensure that a single study could not result in a significant effect, seed-networks were included in meta-analysis if at least three independent studies included seed ROIs within the network.

only peak coordinates attaining statistical significance at the whole-brain level were included in the first phase of the meta-analysis. Then, an effect-size map of the meditation versus control FC was computed by transforming the maximum  $t$  values of the peak coordinates into Hedges' effect sizes. Afterwards, an anisotropic Gaussian kernel was used to allot larger effect sizes to voxels that are more strongly associated with the peaks (Radua et al., 2014). Finally, a random-effects model was used to integrate those studies included in this meta-analysis. SDM is based on the null hypothesis that effect sizes rather than peaks alone are randomly distributed across the whole brain (Radua & Mataix-Cols, 2012). The threshold was set as  $p = .005$  (uncorrected) combined with  $z > 1$ . Radua, Mataix-Cols et al. (2012) do not recommend relying solely on uncorrected or corrected  $p$  values, but rather they strongly suggest using the combination of two thresholds and complementing the analysis with several tests to assess the robustness and heterogeneity of the findings. Based on the empirical validation in their study, Radua, Mataix-Cols et al. proposed using an uncorrected  $p = .005$  as the main threshold, as this was found to optimally balance sensitivity and specificity and to be an approximate equivalent to a corrected  $p$  value = .05 (indeed .025) in SDM. Still, this equivalence is only approximate, so that some thresholding error is expected when using this approach, and researchers might prefer other thresholds. To reduce the

possibility of false positive results, Radua, Mataix-Cols et al. suggested an additional  $z$ -based threshold (e.g.,  $z > 1$ ). We note that  $z > 1$  would be associated with a clearly nonsignificant  $p$ -value under the standard normal distribution, but this is not the case under the empirical distributions produced by permutation tests, as the use of null effect sizes when preprocessing voxels far from any peak coordinate makes  $z > 1$  much more unlikely (i.e., associated with much lower  $p$  values).

## Results

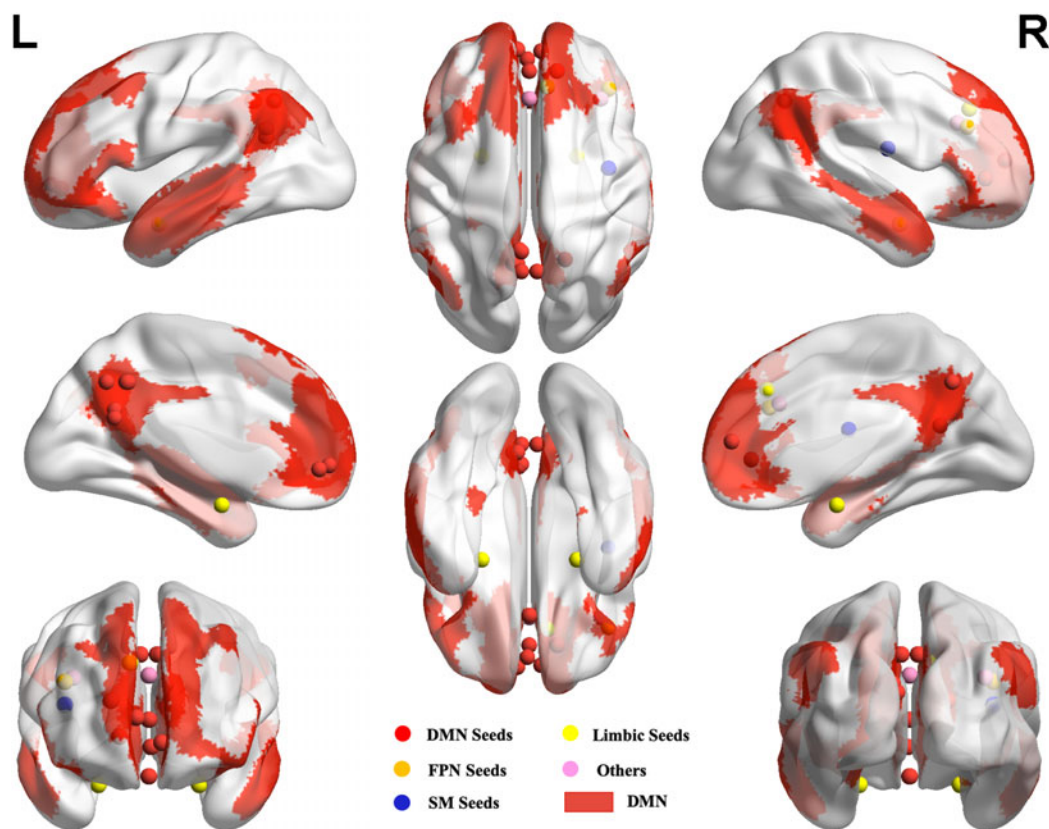
Brain areas with statistically significant effect sizes in the meditation versus control meta-analysis were categorized according to Yeo's 7-network parcellation (Yeo et al., 2011). This network parcellation was selected because: (1) it was defined in a large sample; (2) it was replicated in an independent sample (Yeo et al., 2011); (3) it closely corresponded with networks derived from alternative FC analytic strategies and task-based patterns of co-activation.

Results showed that meditation was related to increased FC between DMN seeds and regions of the left inferior frontal gyrus that fall within the FPN. Increased FC was also found between DMN seeds and VAN regions, such as left insula and right anterior supra-marginal gyrus. In addition, increased FC between DMN seeds and

**Table 3.** Results of meta-analysis of state functional connectivity associated with meditation, based on DMN seeds (n = 10)

Comparison	Effect network	Effect anatomy	x	y	z	Voxels	Z	p
M > C	FPN	Left inferior frontal gyrus	-48	20	26	115	1.77	.001
	Limbic	Left parahippocampal gyrus	-26	-4	-36	22	1.5	.004
	VAN	Right anterior supramarginal gyrus	62	-30	42	20	1.5	.004
	VAN	Left insular	-30	0	-4	631	1.91	.000
	Other	Right cerebellum	14	-76	-32	448	1.76	.001
M < C	SMN/DMN	Right paracentral lobule/precuneus (posterior cingulate gyrus)	12	-40	64	768	-1.47	.001
	DMN	Left posterior cingulate gyrus	-10	-50	4	157	-1.47	.001

Note: Results of comparison in meditation vs. control (M > C; M < C) functional connectivity with default mode network (DMN). The setting threshold was  $p < .005$  (uncorrected) combined with  $z > 1$ ; networks examined included frontoparietal network (FPN), limbic network, ventral attention network (VAN), somatomotor network (SMN), and default mode network (DMN). Voxels = number of  $2 \times 2 \times 2$  mm voxels; P = statistical significance level.

**Figure 3.** Locations of Seed ROIs.

Note: Seed regions-of-interest categorized by a priori functional network including frontoparietal network (FPN-orange seeds), limbic network (yellow seeds), somatomotor network (SMN-blue seeds), and default mode network (DMN-red seeds); Seeds not located in 7 networks (Yeo *et al.*, 2011) marked in pink. Regions in red represent DMN areas. Another three networks that belong to Yeo's 7 network model but not shown above include visual network (VN), ventral attention network (VAN), and dorsal attention network (DAN); L: left; R: right.

left parahippocampal gyrus, a component of the limbic network, was also observed. Functional connectivity between the right cerebellum and DMN seeds increased as well (Table 3; Figure 4).

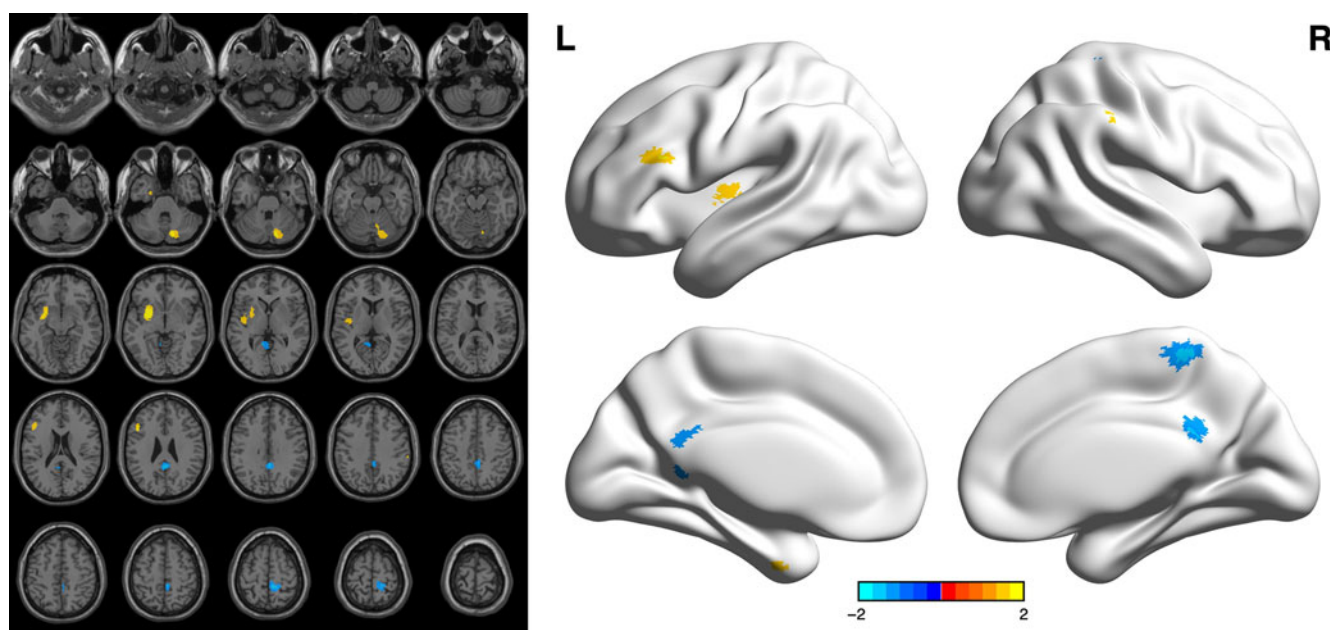
Decreased connectivity within the DMN was characterized by decreased FC between DMN seeds and precuneus extending to posterior cingulate gyrus. Decreased FC between DMN seeds and somatomotor areas within the right paracentral lobule was also found (Table 3; Figure 4).

Meditation experience (indexed as number of hours) was entered into a meta-regression analysis to explore differences between highly experienced meditators and less experienced meditators. Results showed decreased FC between DMN seeds and areas of the medial superior frontal cortex and right posterior cingulate gyrus – both located in the DMN – in individuals with extensive meditation experience compared to those with briefer experience. Increased FC between DMN seeds and the left inferior

**Table 4.** Results of meta-regression of state functional connectivity associated with meditation experience (hours), based on DMN seeds ( $N = 10$ )

Comparison	Effect network	Effect anatomy	X	Y	Z	Voxels	Z	$p$
L > S	FPN	Left inferior frontal gyrus	-48	30	14	1145	3.27	.000
	DAN	Left fusiform	-24	-4	-36	383	2.38	.001
	Limbic	Left inferior temporal gyrus	-52	-54	-18	354	2.33	.001
	DMN	Right middle temporal gyrus	66	-36	-8	33	2.01	.003
	Other	Right cerebellum	24	-74	-22	2069	3.71	.000
	Other	Corpus callosum	0	8	26	305	2.34	.001
	L < S	DMN	Medial superior frontal cortex	6	50	-8	1674	-2.17
DMN		Right posterior cingulate gyrus	6	-44	28	256	-1.8	.000
Other		Brain Stem	-6	-38	-26	292	-1.88	.000
Other		Left cerebellum	-4	-46	-2	89	-1.52	.002
Other		Left hippocampus	-36	-16	-18	69	-1.52	.002
Other		Right hippocampus	32	-10	-18	53	-1.52	.002
Other		Brain Stem	-8	-32	-8	46	-1.52	.002

Note: Results of meta-regression of functional connectivity with default mode network (DMN). The setting threshold was  $p < .005$  (uncorrected) combined with  $z > 1$ ; networks examined included frontoparietal network (FPN), dorsal attention network (DAN), limbic network, and default mode network (DMN). Voxels = number of  $2 \times 2 \times 2$  mm voxels; max P = maximum proportion of studies exhibiting the effect at the peak density, weighted by sample size. L = long term; S = short term.

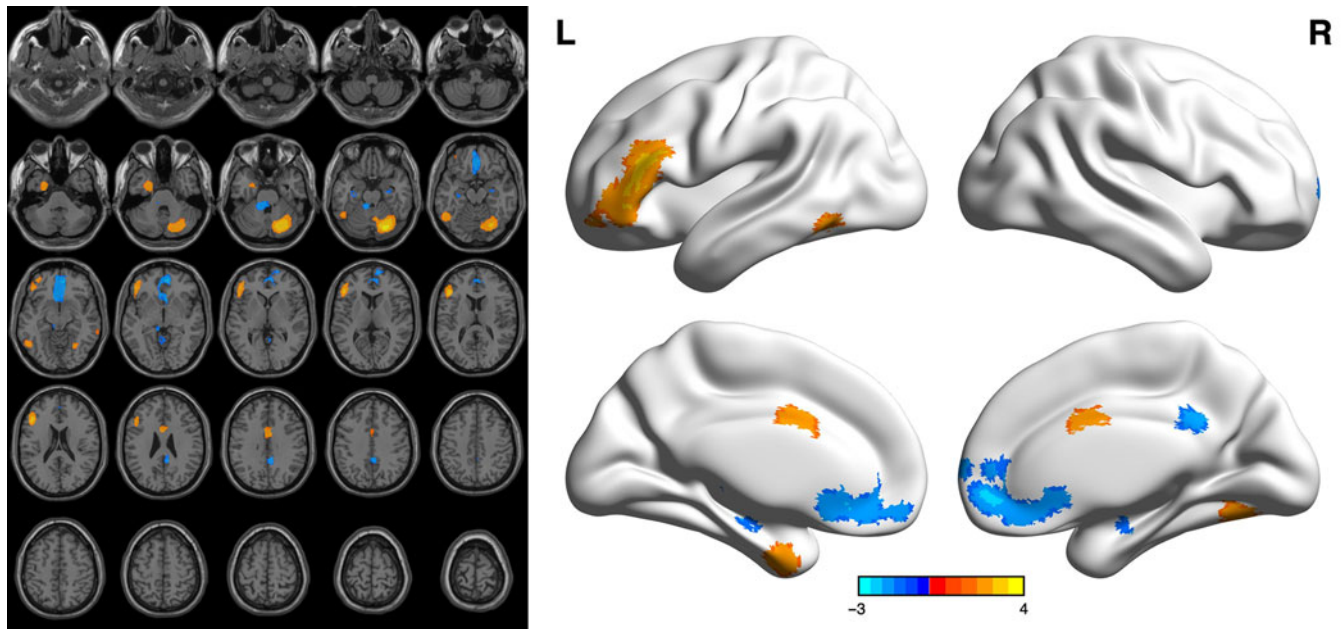
**Figure 4.** Results of meta-analysis of state functional connectivity associated with meditation, based on DMN seeds ( $n = 10$ ).

Note: Results in transverse slices are shown on the left; results projected to the surface are shown on the right. Warm colors: areas showing increased FC with default mode network (DMN); Cool colors: areas showing decreased FC with DMN. Threshold was set at  $p < 0.005$ .

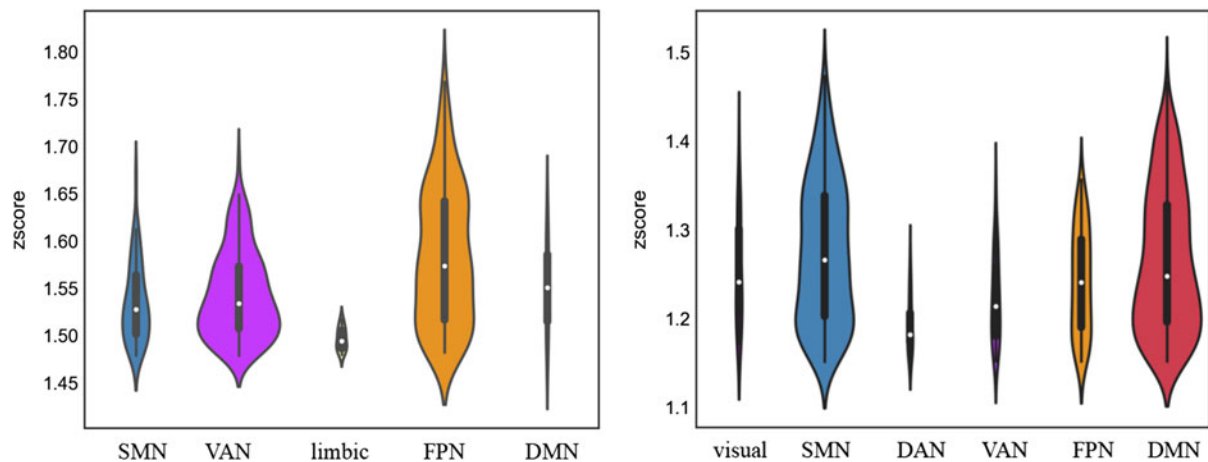
frontal gyrus (FPN), left fusiform (DAN), and left inferior temporal gyrus (limbic network) were found in highly experienced practitioners in contrast to those with less experience (Table 4; Figure 5).

We extracted the  $z$  values of voxels located in the seven-network model – visual network, SMN, DAN, VAN, FPN and DMN – to summarize the distribution of the  $z$  values of voxels in each network for both the meta-analysis of FC and meta-regression. The violin plot shows meditation-associated

decreased FC within DMN and DMN-SMN, along with significant DMN-FPN and DMN-VAN increased FC (Figure 6). Overall, meta-analysis and meta-regression results agreed except for increased FC between DMN and VAN and decreased FC between DMN and SMN, both of which were absent in the meta-regression (Figure 7). Thus, our hypothesis that meditation is associated with significantly increased FC between DMN and FPN, and between DMN and VAN, and significantly decreased FC within DMN was supported. Other than that, the unexpected



**Figure 5.** Results of meta-regression of state functional connectivity associated with meditation experience (hours), based on DMN seeds ( $n = 10$ ). Note: Results in transverse slices are shown on the left; results projected to the surface are shown on the right. Warm colors: areas showing increased FC with default mode network (DMN); cool colors: areas showing decreased FC with DMN. Threshold was set at  $p < 0.005$ .



**Figure 6.** Meta-analysis: violin plot of the Z values of each of the voxels in the seven-networks for both the increased (left) and decreased (right) functional connectivity related to meditation.

Note: Different colors stand for different networks: in both the left and right panel, dark purple is for visual network, blue for SMN, green for DAN, purple for VAN, yellow for limbic, orange for FPN and red for DMN.

finding of decreased FC between DMN and SMN was additional to our final result.

## Discussion

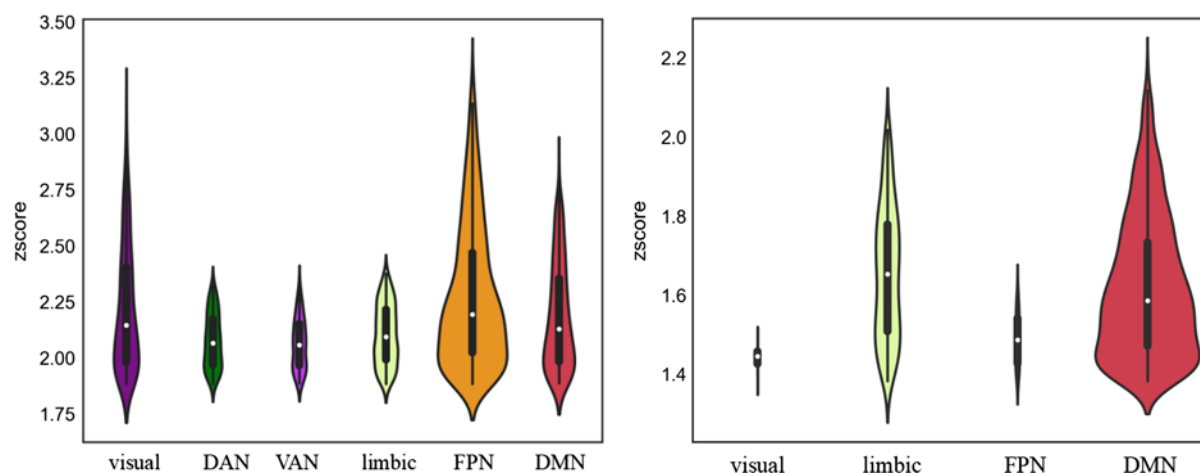
The present study provides the first, albeit preliminary, meta-analytic evidence that meditation practices alter the interactions within and between specific brain networks, that is, DMN, SMN, FPN and VAN (Figure 8). These findings are beneficial for building a neurocognitive model to characterize meditation's underlying neural mechanisms. If confirmed as the number of studies continues to accumulate, our findings could also facilitate the application of meditation in clinical settings. Based on our

results, we propose that reduced FC within DMN and between DMN and SMN, as well as increased FC between DMN and both FPN and VAN, can be tested as biomarkers of meditation training effects. The meta-regression of meditation experience supports this pattern of both decreases and increases in FC.

### *Increased functional connectivity between DMN and FPN*

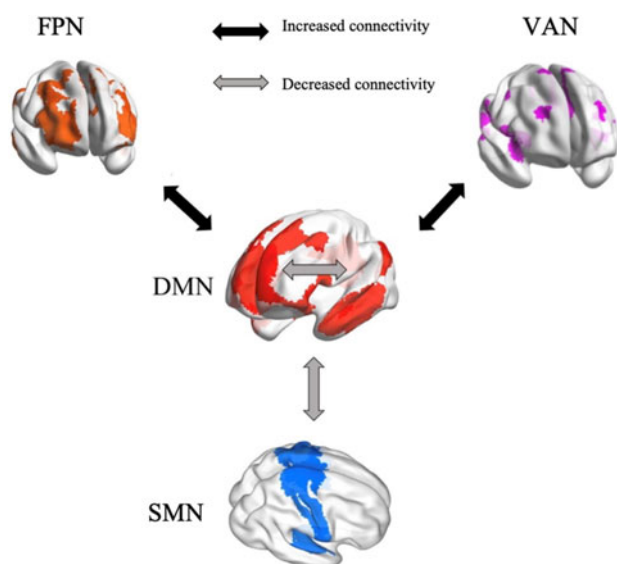
From a theoretical perspective, meditators are trained to monitor their cognition and decrease self-referential thinking to maintain present-moment attention. This implies enhancement of communication between “task-positive” brain regions involved in executive control and the “task-negative” DMN (Brewer *et al.*, 2011; Spreng, 2012). This implication was confirmed by our findings





**Figure 7.** Meta-regression considering the factor of meditation experience (practice hours): violin plot of the Z values of each of the voxels in the seven-network parcellation for both increased (left) and decreased (right) functional connectivity related to meditation.

Note: Different colors stand for different networks: in both the left and right panel, dark purple is for visual network, blue for SMN, green for DAN, purple for VAN, yellow for limbic, orange for FPN and red for DMN.



**Figure 8.** A neurocognitive network model of brain network interactions associated with meditation.

Note: Reduced functional connectivity within the default mode network (DMN), between DMN and somatomotor network (SMN); increased functional connectivity between DMN and frontoparietal network (FPN) and ventral attention network (VAN).

of increased FC between brain areas of DMN involved in internal awareness and FPN regions related to executive control and cognitive monitoring. Objectives of meditation include improving cognitive control (Moore & Malinowski, 2009), presumably through frontoparietal systems and reducing mind wandering and self-referential thinking, which are associated with the DMN (Brewer et al., 2011; Lutz et al., 2008). The left inferior frontal gyrus, a major component of the FPN, is involved in conscious inhibition (Miyake et al., 2000; Swick, Ashley, & Turken, 2008). The interaction between left inferior frontal gyrus and DMN areas might underlie the reduction of mind wandering. Thus, the meditation-related interaction of FPN with DMN regions is reflected by enhanced FC. This result has also been observed

consistently (Brewer et al., 2011; Creswell et al., 2016; Gerlach, Spreng, Madore, & Schacter, 2014; Spreng, 2012). The pattern was found to be more significant in highly experienced meditators compared to individuals with less experience, which further supports the conclusion that meditation changes interactions between the DMN and the FPN.

#### *Increased connectivity between DMN and VAN*

We observed increased FC associated with meditation between DMN seeds and the VAN, regions involved in detecting unexpected stimuli and reorienting attention (Corbetta & Shulman, 2002). Fox and colleagues (2006) linked the VAN to awareness and attentional control related to stimuli generated spontaneously in addition to external stimuli. Attentional control is a core part of meditation practice, especially regarding internal awareness. During meditation, practitioners are guided to attend internally, which might account for increased communication between the DMN involved in self-awareness and the VAN related to attention control. Insular cortex, as a major part of the ventral attention system, participates in many interoception activities (Craig, 2003, 2009; Critchley et al., 2004; Farb, Segal, & Anderson, 2013) and meta-awareness processing (Fleming & Dolan, 2012). Meditation training involves monitoring respiration, heart rate and other internal body states, sustaining focused attention and being aware of mind wandering. Therefore, significant increase in FC between insula and DMN regions is consistent with meditation being intimately associated with attentional functions. The lack of a difference in FC between the DMN and the VAN related to meditation experience may reflect the initial focus of most meditation training on attention control, which presumably remains stable in long-term meditators.

#### *Decreased functional connectivity within DMN*

We found decreased FC in meditators relative to controls and in postmeditation training relative to pretraining within the DMN. Meta-regression confirmed significantly decreased FC in highly experienced meditators in contrast to individuals with less experience. The cognitive roles of the DMN include

self-referential thinking, social evaluations and mind wandering (Andrews-Hanna, 2012; Buckner *et al.*, 2008; Davey, Pujol, & Harrison, 2016; Svoboda *et al.*, 2006). One of the core nodes of the DMN is the posterior cingulate cortex (PCC; Leech & Sharp, 2014). Relative deactivation of the PCC during various types of external attention demanding tasks has been found in many fMRI studies (Singh & Fawcett, 2008). Increased activation of the PCC in retrieving autobiographical memories, making personal decisions and self-evaluations, and planning for the future has been repeatedly observed (Addis, Wong, & Schacter, 2007; Mason *et al.*, 2007; Shannon & Buckner, 2004; Szpunar, Watson, & McDermott, 2007). Both phenomena suggest that the PCC has an important role in maintaining internally directed cognitive activities (Buckner *et al.*, 2008). The finding of decreased FC between DMN seeds and the PCC fits with decreased internal cognition after meditation training, which focuses on regulating self-awareness, detaching from self-referential thinking, and maintaining a nonjudgmental stance (Sperduti, Martinelli, & Piolino, 2012). Through regular practice of self-awareness control activities, the internal FC of the brain network associated with self-referentiality (the DMN) appears to be reduced. In addition, the DMN is involved in rumination, a mental state characterized by repetitive thinking about self-related negative experiences (Berman *et al.*, 2011). Decreased coupling within the DMN has been related to a reduction of ruminative thinking (Jacobs *et al.*, 2016). Therefore, meditation may represent an approach to cope with rumination, with its effectiveness supported behaviorally and in an EEG study (Keune, Bostanov, Hautzinger, & Kotchoubey, 2011; Teismann *et al.*, 2014). The meditation-associated change in decreasing within-DMN FC appeared to be more pronounced as the number of meditation practice hours increased. This further supports that long-term meditation practice helps people to control self-awareness, reduce the occurrence of negative ruminative thinking, and thus avoid the risks of unhealthy mentation to some extent.

#### *Decreased functional connectivity between the DMN and the SMN*

Reduced FC was also observed in meditators compared to controls and in postmeditation training compared to pretraining between the DMN and the SMN. The SMN is composed of multiple somatosensory and motor regions that are traditionally regarded as contributing to individuals' control and detection of movement (Yeo *et al.*, 2011). Few studies have discussed the interaction of the SMN with the DMN in cognitive processing since their functional divisions are relatively clear (Mesulam, 1998). The regions in the SMN are involved in the detection and processing of motor and somatosensory stimuli (Downar, Crawley, Mikulis, & Davis, 2000), whereas the DMN area is related to individual's self-referential thinking (Buckner *et al.*, 2008; Northoff *et al.*, 2006). This results in a low coupling with each other in general. The revealed decreased connectivity between the SMN and the DMN in our meta-analysis might indicate that meditation practice further strengthens the differentiation of these two networks. Through meditation training, individuals are more able to separate external stimuli from internalized attention when dealing with the perception and processing of these external stimuli (Rubia, 2009). In other words, meditation practice can enhance the ability to resist interference by perceived external stimuli with internal consciousness.

#### *Implications for clinical settings*

Meditation has been widely recognized as an effective therapeutic intervention in the treatment of many physical and mental disorders, such as depression, stress-related disturbance (e.g., post-traumatic stress disorder, anxiety disorder), and chronic pain. The findings of the present meta-analysis may explain meditation's clinical effectiveness from a neuroscience perspective.

Depression has been characterized by hyper-connectivity within the DMN system compared to healthy controls (Alexopoulos *et al.*, 2012; Berman *et al.*, 2011; Kaiser *et al.*, 2015). Hypo-connectivity between pregenual anterior cingulate cortex (DMN) and insula (VAN; Horn *et al.*, 2010) and between the DMN and cerebellar regions (Guo *et al.*, 2013) have been observed in patients with depressive disorder. The effect of meditation practice on changing the abnormal interactions of these brain networks (through reducing within-DMN FC and increasing the FC between DMN and both VAN and cerebellum) may partially explain improvements in depression symptoms. Of note, a multisite large sample ( $N > 1000$ ) study was recently conducted on FC in the DMN in patients with major depressive disorder (MDD; Yan *et al.*, 2019). Although the results did not reveal enhanced within-DMN FC in MDD patients, reduced DMN FC was observed in patients treated with antidepressants, which is consistent with the notion that decreasing FC within the DMN is associated with improving depression. In social anxiety disorder, stronger within-DMN FC (Liao *et al.*, 2011) and decreased FC between brain regions related to cognitive control and bilateral angular gyri, important DMN components, have been found (Qiu *et al.*, 2011). A recent meta-analysis focusing on resting-state FC studies found hypo-connectivity and decoupling of the FPN and DMN in patients with anxiety disorder (Xu *et al.*, 2019). Thus, the effect of meditation in enhancing FPN-DMN FC and reducing within-DMN FC may be relevant to the treatment of anxiety disorder. Enhanced within-DMN FC has also been correlated with posttraumatic stress disorder symptoms (Bluhm *et al.*, 2009; Lanius *et al.*, 2010; Qin *et al.*, 2012). Positive effects of meditation in treating anxiety and stress-related disorders may be related to regulation of within-DMN FC and its interaction with brain areas in the VAN system (Li *et al.*, 2012). In the context of chronic pain, abnormal inter-network and between-network dysfunctions of the DMN have been found (Baliki, Baria, & Apkarian, 2011; Napadow *et al.*, 2010), and meditation may play a neuromodulation role in pain relief interventions. Thus, the effects of meditation on changing brain network interactions may underlie its effectiveness in treating mental disorders.

#### *Limitations*

Several limitations in the present meta-analysis warrant further research. First, there have been relatively few brain imaging studies of meditation effects with even fewer seed-based FC studies. Among these studies, variation in the seeds selected made it difficult to conduct large sample size based meta-analyses. Therefore, the number of studies included in statistical analyses was limited and our results should be considered preliminary. Second, the present meta-analysis was limited to FC changes with ROIs within the DMN only. Interactions within and between non-DMN networks should be better examined to provide a more comprehensive model of brain functional integration. Third, standards for data acquisition and preprocessing differed across studies (e.g., difference in MRI facilities, scanning time, motion

correction methods, and instructions regarding eye status). The effects of these variables should be examined in future work. Fourth, we estimated the durations of meditation practice time based on the limited information provided in each paper. Fifth, we used seed ROIs to represent networks. Although functions within each brain network tend to be consistent, local differences are not negligible. For example, in the DMN, Andrews-Hanna and colleagues (2010) were able to distinguish three subnetworks with different cognitive functions. Further parcellation of networks in the future should provide results that are more accurate. Finally, types of meditation were combined. Although the same approach has been adopted by prior brain imaging reviews and meta-analyses (Boccia et al., 2015; Fox et al., 2014; Sperduti et al., 2012; Tomasino et al., 2012), some distinctions between types of meditation may be substantive. Analysis of types of meditations and their brain network interactions may lead to greater understanding of meditation mechanisms and could help identify which type of meditation is best for a specific condition. Thus, we encourage the conduct of comparative studies of meditation to facilitate such efforts in the future.

## Conclusion

In this meta-analysis, we found that meditation effects are associated with both decreased FC (DMN-DMN and DMN-SMN) and increased FC (DMN-FPN and DMN-VAN). Stronger DMN-FPN FC and weaker DMN-DMN FC was more prominent in highly experienced meditators in contrast to those with less experience, which further supports the inference that meditation alters brain network interactions. These findings provide insights into the mechanisms underlying meditation and have implications for guiding clinical assessment of meditation interventions in treating certain physical and mental disorders.

**Acknowledgements.** This work was supported by the National Key R&D Program of China (2017YFC1309902), the National Natural Science Foundation of China (81671774, 81630031 and 31900777), the Hundred Talents Program of the Chinese Academy of Sciences, and Beijing Municipal Science & Technology Commission (Z16110000216152).

**Financial Support.** None.

**Conflict of Interest.** The authors declare no competing financial interests.

**Data Availability Statement.** The meta-data is available at Github: [https://github.com/Chaogan-Yan/PaperScripts/blob/master/Shen\\_2020\\_JRP/SHen\\_Coordinates.xlsx](https://github.com/Chaogan-Yan/PaperScripts/blob/master/Shen_2020_JRP/SHen_Coordinates.xlsx)

## References

- Addis D.R., Wong A.T. and Schacter D.L. (2007). Remembering the past and imagining the future: Common and distinct neural substrates during event construction and elaboration. *Neuropsychologia*, *45*, 1363–1377.
- Alexopoulos G.S., Hoptman M.J., Kanelopoulos D., Murphy C.F., Lim K.O. and Gunning, F.M. (2012). Functional connectivity in the cognitive control network and the default mode network in late-life depression. *Journal of Affective Disorders*, *139*, 56–65.
- Andresen J. (2000). Meditation meets behavioural medicine – The story of experimental research on meditation. *Journal of Consciousness Studies*, *7*, 17–73.
- Andrews-Hanna J.R. (2012). The brain's default network and its adaptive role in internal mentation. *Neuroscientist*, *18*, 251–270.
- Andrews-Hanna J.R., Reidler J.S., Sepulcre J., Poulin R. and Buckner R.L. (2010). Functional-anatomic fractionation of the brain's default network. *Neuron*, *65*, 550–562.
- Baliki M.N., Baria A.T. and Apkarian A.V. (2011). The cortical rhythms of chronic back pain. *Journal of Neuroscience*, *31*, 13981–13990.
- Berkovich-Ohana A., Harel M., Hahamy A., Arieli A. and Malach R. (2016). Alterations in task-induced activity and resting-state fluctuations in visual and DMN areas revealed in long-term meditators. *Neuroimage*, *135*, 125–134.
- Berman M.G., Peltier S., Nee D.E., Kross E., Deldin P.J. and Jonides J. (2011). Depression, rumination and the default network. *Social Cognitive and Affective Neuroscience*, *6*, 548–555.
- Biswal B.B. (2012). Resting state fMRI: a personal history. *Neuroimage*, *62*, 938–944.
- Bluhm R.L., Williamson P.C., Osuch E.A., Frewen P.A., Stevens T.K., Boksman K., ... Lanius R.A. (2009). Alterations in default network connectivity in posttraumatic stress disorder related to early-life trauma. *Journal of Psychiatry & Neuroscience*, *34*, 187–194.
- Boccia M., Piccardi L. and Guariglia P. (2015). The meditative mind: A comprehensive meta-analysis of MRI studies. *BioMed Research International*, *2015*, 419808.
- Bora E., Fornito A., Radua J., Walterfang M., Seal M., Wood S.J. ... Pantelis C. (2011). Neuroanatomical abnormalities in schizophrenia: A multimodal voxel-wise meta-analysis and meta-regression analysis. *Schizophrenia Research*, *127*, 46–57.
- Brewer J.A., Worhunsky P.D., Gray J.R., Tang Y.Y., Weber J. and Kober, H. (2011). Meditation experience is associated with differences in default mode network activity and connectivity. *Proceedings of the National Academy of Sciences of the United States of America*, *108*, 20254–20259.
- Britton W.B., Davis J.H., Loucks E.B., Peterson B., Cullen B.H., Reuter L. ... Lindahl J.R. (2018). Dismantling mindfulness-based cognitive therapy: Creation and validation of 8-week focused attention and open monitoring interventions within a 3-armed randomized controlled trial. *Behavior Research Therapy*, *101*, 92–107.
- Brown K.W. and Ryan R.M. (2003). The benefits of being present: Mindfulness and its role in psychological well-being. *Journal of Personality and Social Psychology*, *84*, 822–848.
- Buckner R.L., Andrews-Hanna J.R. and Schacter D.L. (2008). The brain's default network: Anatomy, function, and relevance to disease. *Annals of the New York Academy of Sciences*, *1124*, 1–38.
- Casey B.J., Tottenham N., Liston C. and Durston S. (2005). Imaging the developing brain: What have we learned about cognitive development? *Trends in Cognitive Science*, *9*, 104–110.
- Chen F., Lv X., Fang J., Yu S., Sui J., Fan L. ... Jiang T. (2015). The effect of body–mind relaxation meditation induction on major depressive disorder: A resting-state fMRI study. *Journal of Affective Disorders*, *183*, 75–82.
- Chiesa A. and Serretti A. (2010). A systematic review of neurobiological and clinical features of mindfulness meditations. *Psychological Medicine*, *40*, 1239–1252.
- Corbetta M., Patel G. and Shulman G.L. (2008). The reorienting system of the human brain: From environment to theory of mind. *Neuron*, *58*, 306–324.
- Corbetta M. and Shulman G.L. (2002). Control of goal-directed and stimulus-driven attention in the brain. *Nature Reviews Neuroscience*, *3*, 201–215.
- Cotier F.A., Zhang R. and Lee T.M. (2017). A longitudinal study of the effect of short-term meditation training on functional network organization of the aging brain. *Scientific Reports*, *7*, 598.
- Craig A.D. (2003). Interoception: The sense of the physiological condition of the body. *Current Opinion in Neurobiology*, *13*, 500–505.
- Craig A.D. (2009). How do you feel – now? The anterior insula and human awareness. *Nature Reviews Neuroscience*, *10*, 59–70.
- Creswell J.D., Taren A.A., Lindsay E.K., Greco C.M., Gianaros P.J., Fairgrieve A. ... Ferris J.L. (2016). Alterations in resting-state functional connectivity link mindfulness meditation with reduced interleukin-6: A randomized controlled trial. *Biological Psychiatry*, *80*, 53–61.
- Critchley H.D., Wiens S., Rotshtein P., Ohman A. and Dolan R.J. (2004). Neural systems supporting interoceptive awareness. *Nature Neuroscience*, *7*, 189–195.
- Davey C.G., Pujol J. and Harrison B.J. (2016). Mapping the self in the brain's default mode network. *Neuroimage*, *132*, 390–397.
- Di X., Gohel S., Kim E.H. and Biswal B.B. (2013). Task vs. rest-different network configurations between the coactivation and the resting-state brain networks. *Frontiers in Human Neuroscience*, *7*, 493.



- Downar J., Crawley A.P., Mikulis D.J. and Davis K.D. (2000). A multimodal cortical network for the detection of changes in the sensory environment. *Nature Neuroscience*, 3, 277–283.
- Eickhoff S.B., Laird A.R., Grefkes C., Wang L.E., Zilles K. and Fox P.T. (2009). Coordinate-based activation likelihood estimation meta-analysis of neuroimaging data: A random-effects approach based on empirical estimates of spatial uncertainty. *Human Brain Mapping*, 30, 2907–2926.
- Farb N.A., Segal Z.V. and Anderson, A.K. (2013). Mindfulness meditation training alters cortical representations of interoceptive attention. *Social Cognitive and Affective Neuroscience*, 8, 15–26.
- Farb N.A., Segal Z.V., Mayberg H., Bean J., McKeon D., Fatima Z. and Anderson A.K. (2007). Attending to the present: Mindfulness meditation reveals distinct neural modes of self-reference. *Social Cognitive and Affective Neuroscience*, 2, 313–322.
- Fjorback L.O., Arendt M., Ornbol E., Fink P. and Walach H. (2011). Mindfulness-based stress reduction and mindfulness-based cognitive therapy: A systematic review of randomized controlled trials. *Acta Psychiatrica Scandinavica*, 124, 102–119.
- Fleming S.M. and Dolan, R.J. (2012). The neural basis of metacognitive ability. *Philosophical Transactions of the Royal Society B: Biological Sciences*, 367, 1338–1349.
- Fox K.C., Nijeboer S., Dixon M.L., Floman J.L., Ellamil M., Rumak S.P. . . . Christoff K. (2014). Is meditation associated with altered brain structure? A systematic review and meta-analysis of morphometric neuroimaging in meditation practitioners. *Neuroscience & Biobehavioral Reviews*, 43, 48–73.
- Fox K.C.R., Dixon M.L., Nijeboer S., Girn M., Floman J.L., Lifshitz M. . . . Christoff, K. (2016). Functional neuroanatomy of meditation: A review and meta-analysis of 78 functional neuroimaging investigations. *Neuroscience & Biobehavioral Reviews*, 65, 208–228.
- Fox M.D., Corbetta M., Snyder A.Z., Vincent J.L. and Raichle M.E. (2006). Spontaneous neuronal activity distinguishes human dorsal and ventral attention systems. *Proceedings of the National Academy of Sciences of the United States of America*, 103, 10046–10051.
- Fox M.D., Snyder A.Z., Vincent J.L., Corbetta M., Van Essen D.C. and Raichle, M.E. (2005). The human brain is intrinsically organized into dynamic, anticorrelated functional networks. *Proceedings of the National Academy of Sciences of the United States of America*, 102, 9673–9678.
- Friston K.J., Williams S., Howard R., Frackowiak R.S. and Turner R. (1996). Movement-related effects in fMRI time-series. *Magnetic Resonance in Medicine*, 35, 346–355.
- Froeliger B., Garland E.L., Kozink R.V., Modlin L.A., Chen N.K., McClernon F.J. . . . Sobin P. (2012). Meditation-state Functional Connectivity (msFC): Strengthening of the dorsal attention network and beyond. *Evidence-Based Complementary and Alternative Medicine*, 2012, 680407.
- Garrison K.A., Scheinost D., Constable R. T. and Brewer, J.A. (2014). BOLD signal and functional connectivity associated with loving kindness meditation. *Brain and Behavior*, 4, 337–347.
- Gerlach K.D., Spreng R.N., Madore K.P. and Schacter D.L. (2014). Future planning: Default network activity couples with frontoparietal control network and reward-processing regions during process and outcome simulations. *Social Cognitive and Affective Neuroscience*, 9, 1942–1951.
- Goldberg S.B., Tucker R.P., Greene P.A., Davidson R.J., Wampold B.E., Kearney D.J. and Simpson T.L. (2018). Mindfulness-based interventions for psychiatric disorders: A systematic review and meta-analysis. *Clinical Psychology Review*, 59, 52–60.
- Goldin P., Ramel W. and Gross J. (2009). Mindfulness meditation training and self-referential processing in social anxiety disorder: Behavioral and neural effects. *Journal of Cognitive Psychotherapy*, 23, 242–257.
- Gopinath K., Ringe W., Goyal A., Carter K., Dinse H.R., Haley R. and Briggs R. (2011). Striatal functional connectivity networks are modulated by fMRI resting state conditions. *Neuroimage*, 54, 380–388.
- Goyal M., Singh S., Sibinga E.M., Gould N.F., Rowland-Seymour A., Sharma R. . . . Haythornthwaite J.A. (2014). Meditation programs for psychological stress and well-being: a systematic review and meta-analysis. *JAMA Internal Medicine*, 174, 357–368.
- Gu J., Strauss C., Bond R. and Cavanagh K. (2015). How do mindfulness-based cognitive therapy and mindfulness-based stress reduction improve mental health and wellbeing? A systematic review and meta-analysis of mediation studies. *Clinical Psychology Review*, 37, 1–12.
- Guo W., Liu F., Xue Z., Gao K., Liu Z., Xiao C. . . . Zhao J. (2013). Abnormal resting-state cerebellar-cerebral functional connectivity in treatment-resistant depression and treatment sensitive depression. *Progress in Neuropsychopharmacology & Biological Psychiatry*, 44, 51–57.
- Hanakawa T., Honda M., Sawamoto N., Okada T., Yonekura Y., Fukuyama H. and Shibasaki H. (2002). The role of rostral Brodmann area 6 in mental-operation tasks: an integrative neuroimaging approach. *Cerebral Cortex*, 12, 1157–1170.
- Hasenkamp W. and Barsalou L.W. (2012). Effects of meditation experience on functional connectivity of distributed brain networks. *Frontiers in Human Neuroscience*, 6, 38.
- Hernandez S.E., Barros-Loscertales A., Xiao Y., Gonzalez-Mora J. L. and Rubia K. (2018). Gray matter and functional connectivity in anterior cingulate cortex associated with the state of mental silence during Sahaja yoga meditation. *Neuroscience*, 371, 395–406.
- Hofmann S.G., Grossman P. and Hinton D.E. (2011). Loving-kindness and compassion meditation: Potential for psychological interventions. *Clinical Psychology Review*, 31, 1126–1132.
- Hofmann S.G., Sawyer A.T., Witt A.A. and Oh D. (2010). The effect of mindfulness-based therapy on anxiety and depression: A meta-analytic review. *Journal of Consulting and Clinical Psychology*, 78, 169–183.
- Horn D.I., Yu C., Steiner J., Buchmann J., Kaufmann J., Osoba A., . . . Walter M. (2010). Glutamatergic and resting-state functional connectivity correlates of severity in major depression – The role of pregenual anterior cingulate cortex and anterior insula. *Frontiers in Systems Neuroscience*, 4, 33.
- Jacobs R.H., Watkins E.R., Peters A.T., Feldhaus C.G., Barba A., Carbray J. and Langenecker S.A. (2016). Targeting ruminative thinking in adolescents at risk for depressive relapse: Rumination-focused cognitive behavior therapy in a pilot randomized controlled trial with resting state fMRI. *PLoS One*, 11, e0163952.
- Jang J.H., Jung W.H., Kang D.H., Byun M.S., Kwon S.J., Choi C.H. and Kwon, J.S. (2011). Increased default mode network connectivity associated with meditation. *Neuroscience Letters*, 487, 358–362.
- Kabat-Zinn J. (2009). *Wherever You Go, There You Are: Mindfulness Meditation in Everyday Life*. Hachette Books.
- Kaiser R.H., Andrews-Hanna J.R., Wager T.D. and Pizzagalli D.A. (2015). Large-scale network dysfunction in major depressive disorder: A meta-analysis of resting-state functional connectivity. *JAMA Psychiatry*, 72, 603–611.
- Kelly A.M. and Garavan H. (2005). Human functional neuroimaging of brain changes associated with practice. *Cerebral Cortex*, 15, 1089–1102.
- Keune P.M., Bostanov V., Hautzinger M. and Kotchoubey B. (2011). Mindfulness-based cognitive therapy (MBCT), cognitive style, and the temporal dynamics of frontal EEG alpha asymmetry in recurrently depressed patients. *Biological Psychology*, 88, 243–252.
- Kilpatrick L.A., Suyenobu B.Y., Smith S.R., Bueller J.A., Goodman T., Creswell J.D. . . . Naliboff B.D. (2011). Impact of Mindfulness-Based Stress Reduction training on intrinsic brain connectivity. *Neuroimage*, 56, 290–298.
- Kristeller J.L. and Hallett C.B. (1999). An exploratory study of a meditation-based intervention for binge eating disorder. *Journal of Health Psychology*, 4, 357–363.
- Kuhlman J.R. (2001). Cultivating compassion: A Buddhist perspective. *Library Journal*, 126, 101–102.
- Lamm C., Decety J. and Singer T. (2011). Meta-analytic evidence for common and distinct neural networks associated with directly experienced pain and empathy for pain. *Neuroimage*, 54, 2492–2502.
- Lanius R.A., Bluhm R.L., Coupland N.J., Hegadoren K.M., Rowe B., Theberge J., . . . Brimson M. (2010). Default mode network connectivity as a predictor of post-traumatic stress disorder symptom severity in acutely traumatized subjects. *Acta Psychiatrica Scandinavica*, 121, 33–40.
- Lech R. and Sharp D.J. (2014). The role of the posterior cingulate cortex in cognition and disease. *Brain*, 137, 12–32.
- Li P., Li S., Dong Z., Luo J., Han H., Xiong H., Guo Z. and Li, Z. (2012). Altered resting state functional connectivity patterns of the anterior



- prefrontal cortex in obsessive-compulsive disorder. *Neuroreport*, *23*, 681–686.
- Liao W., Xu Q., Mantini D., Ding J., Machado-de-Sousa J.P., Hallak J.E., . . . Chen H. (2011). Altered gray matter morphometry and resting-state functional and structural connectivity in social anxiety disorder. *Brain Research*, *1388*, 167–177.
- Liu Z., Wu Y., Li L. and Guo X. (2018). Functional connectivity within the executive control network mediates the effects of long-term Tai Chi exercise on elders' emotion regulation. *Frontiers in Aging Neuroscience*, *10*, 315.
- Lippelt D.P., Hommel B. and Colzato, L.S. (2014). Focused attention, open monitoring and loving kindness meditation: effects on attention, conflict monitoring, and creativity – A review. *Frontiers in Psychology*, *5*, 1083.
- Lutz A., Slagter H.A., Dunne J.D. and Davidson, R.J. (2008). Attention regulation and monitoring in meditation. *Trends in Cognitive Sciences*, *12*, 163–169.
- Manna A., Raffone A., Perrucci M.G., Nardo D., Ferretti A., Tartaro A., . . . Romani G.L. (2010). Neural correlates of focused attention and cognitive monitoring in meditation. *Brain Research Bulletin*, *82*, 46–56.
- Mason M.F., Norton M.I., Van Horn J.D., Wegner D.M., Grafton S.T. and Macrae C.N. (2007). Wandering minds: the default network and stimulus-independent thought. *Science*, *315*, 393–395.
- Menon V. and Uddin L.Q. (2010). Saliency, switching, attention and control: A network model of insula function. *Brain Structure and Function*, *214*, 655–667.
- Mesulam M.M. (1998). From sensation to cognition. *Brain*, *121*, 1013–1052.
- Miyake A., Friedman N.P., Emerson M.J., Witzki A.H., Howterter A. and Wager T.D. (2000). The unity and diversity of executive functions and their contributions to complex “frontal lobe” tasks: A latent variable analysis. *Cognitive Psychology*, *41*, 49–100.
- Moore A. and Malinowski P. (2009). Meditation, mindfulness and cognitive flexibility. *Consciousness and Cognition*, *18*, 176–186.
- Nachev P., Kennard C. and Husain M. (2008). Functional role of the supplementary and pre-supplementary motor areas. *Nature Reviews Neuroscience*, *9*, 856–869.
- Napadow V., LaCount L., Park K., As-Sanie S., Clauw D.J. and Harris R.E. (2010). Intrinsic brain connectivity in fibromyalgia is associated with chronic pain intensity. *Arthritis & Rheumatology*, *62*, 2545–2555.
- Northoff G., Heinzl A., de Greck M., Bermpohl F., Dobrowolny H. and Panksepp J. (2006). Self-referential processing in our brain – A meta-analysis of imaging studies on the self. *Neuroimage*, *31*, 440–457.
- Ong J.C., Shapiro S.L. and Manber R. (2008). Combining mindfulness meditation with cognitive-behavior therapy for insomnia: A treatment-development study. *Behavior Therapy*, *39*, 171–182.
- Pagnoni G. (2012). Dynamical properties of BOLD activity from the ventral posteromedial cortex associated with meditation and attentional skills. *Journal of Neuroscience*, *32*, 5242–5249.
- Qin L.D., Wang Z., Sun Y.W., Wan J.Q., Su S.S., Zhou Y. and Xu J.R. (2012). A preliminary study of alterations in default network connectivity in post-traumatic stress disorder patients following recent trauma. *Brain Research*, *1484*, 50–56.
- Qiu C., Liao W., Ding J., Feng Y., Zhu C., Nie X. . . . Gong Q. (2011). Regional homogeneity changes in social anxiety disorder: A resting-state fMRI study. *Psychiatry Research*, *194*, 47–53.
- Radua J., Borgwardt S., Crescini A., Mataix-Cols D., Meyer-Lindenberg A., McGuire P.K. and Fusar-Poli, P. (2012). Multimodal meta-analysis of structural and functional brain changes in first episode psychosis and the effects of antipsychotic medication. *Neuroscience & Biobehavioral Reviews*, *36*, 2325–2333.
- Radua J. and Mataix-Cols D. (2009). Voxel-wise meta-analysis of grey matter changes in obsessive-compulsive disorder. *British Journal of Psychiatry*, *195*, 393–402.
- Radua J. and Mataix-Cols D. (2012). Meta-analytic methods for neuroimaging data explained. *Biology of Mood & Anxiety Disorders*, *2*, 6.
- Radua J., Mataix-Cols D., Phillips M.L., El-Hage W., Kronhaus D.M., Cardoner, N. and Surguladze, S. (2012). A new meta-analytic method for neuroimaging studies that combines reported peak coordinates and statistical parametric maps. *European Psychiatry*, *27*, 605–611.
- Radua J., Rubia K., Canales-Rodriguez E.J., Pomarol-Clotet E., Fusar-Poli P. and Mataix-Cols D. (2014). Anisotropic kernels for coordinate-based meta-analyses of neuroimaging studies. *Frontiers in Psychology*, *5*, 13.
- Raichle M.E. (2015). The brain's default mode network. *Annual Review of Neuroscience*, *38*, 433–447.
- Rubia, K. (2009). The neurobiology of Meditation and its clinical effectiveness in psychiatric disorders. *Biological Psychology*, *82*, 1–11.
- Schacter D.L., Addis D.R. and Buckner R.L. (2007). Remembering the past to imagine the future: the prospective brain. *Nature Reviews Neuroscience*, *8*, 657–661.
- Sestieri C., Corbetta M., Romani G.L. and Shulman G.L. (2011). Episodic memory retrieval, parietal cortex, and the default mode network: functional and topographic analyses. *Journal of Neuroscience*, *31*, 4407–4420.
- Shannon B.J. and Buckner R.L. (2004). Functional-anatomic correlates of memory retrieval that suggest nontraditional processing roles for multiple distinct regions within posterior parietal cortex. *Journal of Neuroscience*, *24*, 10084–10092.
- Shao, R., Keuper, K., Geng, X., & Lee, T. M., 2016. Pons to posterior cingulate functional projections predict affective processing changes in the elderly following eight weeks of meditation training. *EBioMedicine*, *10*, 236–248.
- Singer T., Critchley H.D. and Preuschoff K. (2009). A common role of insula in feelings, empathy and uncertainty. *Trends in Cognitive Sciences*, *13*, 334–340.
- Singh K.D. and Fawcett I.P. (2008). Transient and linearly graded deactivation of the human default-mode network by a visual detection task. *Neuroimage*, *41*, 100–112.
- Slagter H.A., Davidson R.J. and Lutz A. (2011). Mental training as a tool in the neuroscientific study of brain and cognitive plasticity. *Frontiers in Human Neuroscience*, *5*, 17.
- Sperduti M., Martinelli P. and Piolino P. (2012). A neurocognitive model of meditation based on activation likelihood estimation (ALE) meta-analysis. *Conscious and Cognition*, *21*, 269–276.
- Spreng R.N. (2012). The fallacy of a “task-negative” network. *Frontiers in Psychology*, *3*, 145.
- Spreng R.N. and Grady C.L. (2009). Patterns of brain activity supporting autobiographical memory, prospection, and theory of mind, and their relationship to the default mode network. *Journal of Cognitive Neuroscience*, *22*, 12.
- Svoboda E., McKinnon M.C. and Levine, B. (2006). The functional neuroanatomy of autobiographical memory: A meta-analysis. *Neuropsychologia*, *44*, 2189–2208.
- Swick D., Ashley V. and Turken A.U. (2008). Left inferior frontal gyrus is critical for response inhibition. *BMC Neuroscience*, *9*, 102.
- Szpunar K.K., Watson J.M. and McDermott, K.B. (2007). Neural substrates of envisioning the future. *Proceedings of the National Academy of Sciences of the United States of America*, *104*, 642–647.
- Tahmasian M., Sepehry A.A., Samea F., Khodadadifar T., Soltaninejad Z., Javaheripour N. . . . Eickhoff C.R. (2019). Practical recommendations to conduct a neuroimaging meta-analysis for neuropsychiatric disorders. *Human Brain Mapping*, *40*, 5142–5154.
- Taren A.A., Gianaros P.J., Greco, C.M., Lindsay, E.K., Fairgrieve, A., Brown, K.W. . . . Bursley J.K. (2015). Mindfulness meditation training alters stress-related amygdala resting state functional connectivity: a randomized controlled trial. *Social Cognitive and Affective Neuroscience*, *10*, 1758–1768.
- Taylor V.A., Daneault V., Grant J., Scavone G., Breton E., Roffe-Vidal S. . . . Beauregard, M. (2013). Impact of meditation training on the default mode network during a restful state. *Social Cognitive and Affective Neuroscience*, *8*, 4–14.
- Teismann T., von Brachel R., Hanning S., Grillenberger M., Hebermehl L., Hornstein I. and Willutzki U. (2014). A randomized controlled trial on the effectiveness of a rumination-focused group treatment for residual depression. *Psychotherapy Research*, *24*, 80–90.
- Tomasino B., Fregona S., Skrap M. and Fabbro F. (2012). Meditation-related activations are modulated by the practices needed to obtain it and by the expertise: An ALE meta-analysis study. *Frontiers in Human Neuroscience*, *6*, 346.

- Turkeltaub P.E., Eden G.F., Jones K.M. and Zeffiro T.A. (2002).** Meta-analysis of the functional neuroanatomy of single-word reading: Method and validation. *Neuroimage*, **16**, 765–780.
- Xu J., Van Dam N.T., Feng C., Luo Y., Ai H., Gu R. and Xu P. (2019).** Anxious brain networks: A coordinate-based activation likelihood estimation meta-analysis of resting-state functional connectivity studies in anxiety. *Neuroscience & Biobehavioral Reviews*, **96**, 21–30.
- Yan C.-G., Chen X., Li L., Castellanos F.X., Bai T.-J., Bo Q.-J. . . . Zang Y.-F. (2019).** Reduced default mode network functional connectivity in patients with recurrent major depressive disorder. *Proceedings of the National Academy of Sciences of the United States of America*, **116**, 9078–9083.
- Yang C.C., Barros-Loscertales A., Pinazo D., Ventura-Campos N., Borchardt V., Bustamante J.C. . . . Walter M. (2016).** State and training effects of mindfulness meditation on brain networks reflect neuronal mechanisms of its antidepressant effect. *Neural Plasticity*, **2016**, 9504642.
- Yeo B.T., Krienen F.M., Sepulcre J., Sabuncu M.R., Lashkari D., Hollinshead M. . . . Buckner R.L. (2011).** The organization of the human cerebral cortex estimated by intrinsic functional connectivity. *Journal of Neurophysiology*, **106**, 1125–1165.
- Zeng X., Chiu C.P., Wang R., Oei T.P. and Leung F.Y. (2015).** The effect of loving-kindness meditation on positive emotions: a meta-analytic review. *Frontiers in Psychology*, **6**, 1693.