

VOL. LIII, NO. 221.

APRIL, 1907.

THE JOURNAL

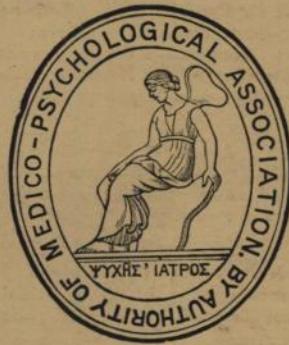
OF
MENTAL SCIENCE.

EDITORS

Henry Rayner, M.D. A. R. Urquhart, M.D.
Conolly Norman, F.R.C.P.I. J. Chambers, M.D.

ASSISTANT EDITOR:

J. R. Lord, M.B.



LONDON:

J. & A. CHURCHILL,
7, GREAT MARLBOROUGH STREET.

**MSS. and Correspondence to be sent to Editors, 16, Queen Anne Street
London, W. Printed Matter to be sent to Messrs. Churchill. Change
of Address of Members to be sent to the General Secretary
and to Messrs. Adlard and Son.**

Published Quarterly, price Five Shillings net; or Twenty Shillings
per annum net.

JOURNAL OF MENTAL SCIENCE.

Exchange Journals.

British.

Asylum News; Brain; British Medical Journal; Bristol Medico-Chirurgical Journal; Dublin Medical Journal; Edinburgh Medical Journal; Glasgow Medical Journal; Hospital; Lancet; Mind; Proceedings of the Society for Psychical Research; Scottish Medical and Surgical Journal; Review of Neurology and Psychiatry; British Journal of Psychology.

American.

Alienist and Neurologist; Journal of Insanity; Journal of Medical Sciences; Journal of Comparative Neurology; Journal of Mental and Nervous Diseases; Journal of Mental Pathology; Journal of Psychology; Medicine; Monthly Cyclopædia of Practical Medicine; Psychological Review; Quarterly Journal of Inebriety; Reports of the Smithsonian Institute; Transactions of the American Medico-Psychological Association; Universal Medical Journal.

French.

Archives Anthropologie Criminelle; Annales Médico-Psychologiques; Annales des Sciences Psychiques; Archives de Neurologie; Gazette des Hôpitaux; Journal de Médecine de Bordeaux; Nouvelle Iconographie de la Salpêtrière; Polybiblion; Progrès Médicale; Revue Philosophique; Revue de Psychiatrie; Revue Scientifique; Revue de l'Hypnotisme; Bulletin de l'Institut Psychique.

Belgian.

Bulletin de la Société de Médecine Mentale de Belgique.

German.

Allgemeine Zeitschrift für Psychiatrie; Archiv für Psychiatrie und Nervenkrankheiten; Centralblatt für Anthropologie; Der Irrenfreund; Jahrbücher für Psychiatrie; Kraepelin's Psychologische Arbeiten; Monatsschrift für Psychiatrie und Neurologie; Neurologisches Centralblatt; Philosophische Studien; Psychiatrische Wochenschrift; Zeitschrift für Psychologie.

Italian.

Annali di Freniatria; Annali di Nevrologia; Archivio di Psichiatria; Il Manicomio Moderno; La Psichiatria; Rivista di Patologia nervosa e mentale; Rivista Sperimentale di Freniatria; Rivista Neuropatologia Psichiatria; Rivista di Psicologia.

Russian.

Archiv Psychiatrii, Nevrologii, i Soudebnoi Psychopatologuii; Obozrenie Psychiatrii, Nevrologii, i Experimentalnoi Psychologuii; Voprosi Nervno-psychitscheckoi Medizini; Voprosi filosofii i psychologuii.

Books and Pamphlets Received.

Psychiatry, *Bianchi* (translated by J. H. Macdonald); Epilepsy, *Aldren Turner*, Nervous Diseases, *Starr*; Degeneration in Families, *Lange*; Les Passions, *Ribot*; The Care and Nursing of the Insane, *P. J. Baily*; Les Therapeutiques Récentes dans les Maladies Nerveuses, *Lamois et Porot*; The Psychology of Alcoholism, *Cullen*; Das Wesen des Menschlichen Seelen- und Geisteslebens, *Berthold Kern*; Die Grosshirnrinde des Menschen, *Theodor Kars*.

D. STEWART & CO.,
 GENERAL DRAPERY, CLOTHING, AND
 BEDDING CONTRACTORS
 WITH COUNTY COUNCILS, BOARDS OF GUARDIANS,
 COMMITTEES OF ASYLUMS, HOSPITALS AND SCHOOLS

Blankets	Flaxens	Hosiery	Table Linens
Bedsteads	Flannels	Linoleum	Towels
Bedding	Furniture	Pillow Linens	Towelling
Calicoes	Flocks	Prints	Waterproof
Carpets	Haberdashery	Shirtings	Sheeting
Clothing	Hessians	Sheetings (Cotton)	Window
Dress Materials	Hollands	Sheetings (Linen)	Holland

D. S. & Co. at present hold Contracts with many of the largest Institutions in London and the Provinces.

TENDERS INVITED.

16, STAINING LANE, GRESHAM STREET,
 LONDON, E.C.

Telegraphic Address—"Centralize, London." Telephone—521 Bank.

'RONUK' (SANITARY) POLISH

For Floors.



POLISHES, PRESERVES, AND PURIFIES.
 PREVENTS THE HARBOURING OF GERMS.

*Awarded Bronze Medal
 of the Royal Sanitary
 Institute.
 Only Award ever
 granted to a Polish.*

*Used in the Principal
 Hospitals, also in the
 National Gallery, Tate
 Gallery, Hertford
 House, etc. etc.*

CONTRACT DEPARTMENT.—"RONUK," Ltd., make a speciality of Polishing all kinds of Flooring. A large Staff of Specially Trained Workmen is kept by the Company, and inquiries for Estimates for the first preparation or maintenance of any new or previously unpolished Floors will receive immediate attention.

Caution.—Customers should see that every package bears the Registered Trade Mark, and that the Red Seal is intact, as endeavours are made to substitute inferior articles on the ground that they are the same as "RONUK."

A Sample, with Full Particulars and Prices, will be sent Free to any Institution on application.

"RONUK," Ltd., Head Office and Factory, **PORTSLADE, near BRIGHTON.**
 London Depôt: **86, YORK ROAD, LAMBETH, S.E.** Manchester Depôt: **285, DEANSGATE.**

J. Swift & Son,

MANUFACTURING OPTICIANS,

Solely appointed to H.M. Dept., War Office.

NEW HISTOLOGICAL MICROSCOPE,

with coarse adjustment by rack and pinion, fine adjustment by micrometer screw, $2/3$ " and $1/6$ " objectives, one ocular and iris diaphragm, in Cabinet.

£6 15s.

Double nose-piece **15s.** extra.

Microscope as above, but with sliding tube, coarse adjustment.

£5 5s.

These microscopes have been supplied to the following medical schools, viz.—St. Bartholomew's, St. Mary's, Guy's, Westminster, Charing Cross, Middlesex, London Hospital, University College, and most of the Provincial Colleges.

Illustrated Circular on Application.

University Optical Works,

81, TOTTENHAM COURT ROAD, W.

ONE OF THE BEST NURSING HOMES IN ENGLAND

for the private treatment of Mild Mental, Neurasthenia, and all Nervous Cases of both sexes. Very healthy situation, 400 feet above sea level. Extensive grounds. Nursing Staff under trained Matron. Moderate inclusive terms.
"A high-class nursing home."—*Standard*. "An ideal rest home."—*Norwood News*.

For illustrated booklet apply Medical Director or Matron,

WHITE HALL, SOUTH NORWOOD HILL, S.E.

Male Nurses' (TEMPERANCE) Co-operation, LIMITED.

Only Addresses - { London: 10, THAYER STREET, MANCHESTER SQUARE, W.
Manchester: 235, BRUNSWICK ST. (Facing Owens College).
Edinburgh: 7, TORPICHEN STREET.

Superior Trained MALE NURSES for Medical, Surgical, Mental, Dipsomania, Fever, and Travelling Cases supplied at a moment's notice, Day or Night. All Nurses supplied by this Association are TOTAL ABSTAINERS. SKILLED MASSEURS supplied. Terms: £1 11s. 6d. to £2 2s. or upwards per week. Nurses to receive their own fees.

F. ROUSE WALSH, Secretary.

Telephones { (London), 538, Paddington.
(Manchester), 4699, Central.
(Edinburgh), 02715, Central.

Telegrams { "Assuaged, London."
"Assuaged, Manchester."
"Assuaged, Edinburgh."

TEMPERANCE MALE NURSES' CO-OPERATION, LTD.,

Head Office:

50, New Cavendish Street, Portland Place, London, W. ;

Branch Offices { 176, Oxford Road, Manchester.
9, Leamington Terrace, Edinburgh.

Incorporated under the Industrial and Provident Societies Act, 1893. (Regd. No. 3685.)

Highly trained Male Nurses for Mental, Medical, Surgical, Catheter, and all cases. Terms from £1 11s. 6d. upwards. Masseurs and Valet Attendants also supplied.

TELEPHONE NOS.
London 147s Paddington.
Manchester 5213 Central.
Edinburgh 399 y. Central.

TELEGRAMS:
"Tactear, London."
"Tactear, Manchester."
"Surgical, Edinburgh."

M. D. GOLD, Sec.

ALWAYS USE

REFLEX

FLOOR POLISH.

REQUIRES NO MIXING WHATEVER.

Brilliantly Polishes Floors, Linoleums, Floorcloths, &c.

Economical, Cleanly, Healthful; Maximum of Lustre for Minimum of Labour.

GEO. T. COX & SONS, Ltd.,

9 & 10, ST. MARY-AT-HILL, EASTCHEAP, LONDON, E.C.

This Polish is specially adapted for use in Public Institutions and other large establishments. Samples Free on application.

ALL INFORMATION WITH REFERENCE TO

ADVERTISEMENTS

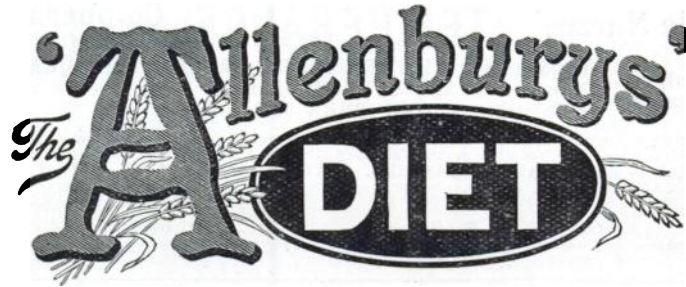
FOR THIS JOURNAL MAY BE OBTAINED OF

J. H. BOOTY & SON,

30, Holborn, London, E.C.

Telegrams: "Praeda, London."
Telephone: 1717 Holborn.

*A Peptonised Food that can be made in a minute, the
addition of boiling water only being necessary.*



A PANCREATISED MILK AND CEREAL FOOD.

By the use of the "Allenburys" Diet all trouble of peptonising milk and farinaceous foods is overcome. In the sick room it will be found extremely useful as the food is easily digested and assimilated, is quickly made, and only the exact quantity required need be prepared at a time.

The "Allenburys" Diet is made from pure rich milk and whole wheat, both ingredients being largely pre-digested during manufacture. It can be taken by those who cannot digest cow's milk, and provides a light and very nourishing diet for Invalids, Dyspeptics and the Aged.

For travellers by sea or land this complete food will be found exceedingly valuable.

~~~~~  
**A Sample with full particulars sent free on request.**  
~~~~~

ALLEN & HANBURY'S Ltd.,

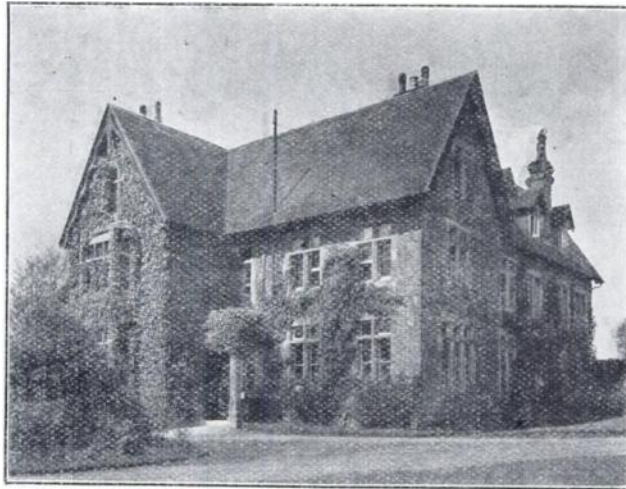
Plough Court, Lombard Street, London, E.C.

SOUTH BEACON,
HADLOW DOWN, BUXTED, SUSSEX.
Established 1892,

For the Treatment of slight Nervous or Mental Breakdown.
GENTLEMEN ONLY.

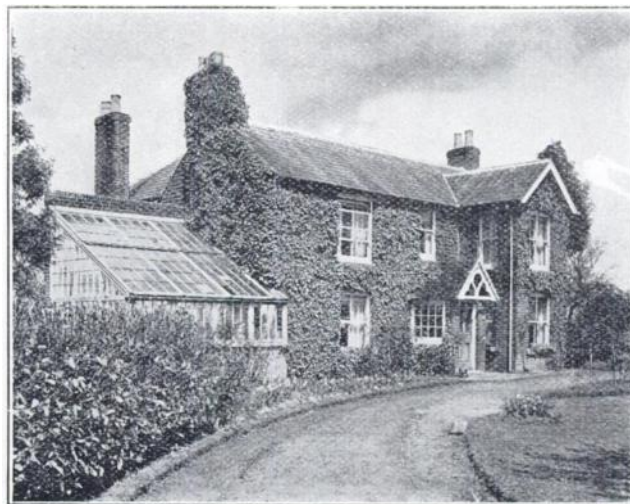
Telegrams: Hadlow Down. Stations: Buxted, Mayfield, or Heathfield.

40 Acres of Farm and Recreation
Ground, Poultry Farming.



Riding, Driving, Golf, and all Out-
door Recreation.

THE CROFT, adjoining South Beacon.



For one Gentleman only (or can be let furnished to Invalid).

PHILIP H. HARMER.