

INFECTION CONTROL AND HOSPITAL EPIDEMIOLOGY[™]

EDITORIAL

A Test of Tuberculin Quality: Tried and True or Tired and Tattered?

TIMOTHY F. JONES, MD; WILLIAM SCHAFFNER, MD

479

ORIGINAL ARTICLES

Tuberculosis and Tuberculin Quality: Best Intentions, Misleading Results

M. SIGFRIDO RANGEL-FRAUSTO, MD, MSc; SAMUEL PONCE-DE-LEÓN-ROSALES, MD, MSc;
CLAUDIA MARTINEZ-ABAROA, RN, MSc; KAARE HASLØV, MD

481

Incidence and Predictors of Surgical-Site Infections in Vietnam

DAO NGUYEN, MD; WILLIAM BRUCE MACLEOD, ScD; DAC CAM PHUNG, MD, PhD; QUYET THANG CONG, MD, MS;
VIET HUNG NGUYEN, MD; VAN HOA NGUYEN, MD; DAVIDSON HOWES HAMER, MD

485

Postdischarge Nosocomial Infections in Primary Care

LAURENT LETRILLIART, MD, PhD; MARGUERITE GUIGUET, PhD; THOMAS HANSLIK, MD;
ANTOINE FLAHAULT, MD, PhD

493

Etiology of Fever and Opportunities for Reduction of Antibiotic Use in a Pediatric Intensive Care Unit

PHILIP TOLTZIS, MD; BONNIE ROSOLOWSKI, RT; ANN SALVATOR, MS

499

Methicillin-Resistant *Staphylococcus aureus* in Geriatric Patients: Usefulness of Screening in a Chronic-Care Setting

DANIEL R. TALON, PhD; XAVIER BERTRAND, PhD

505

Incidence of, and Risk Factors for, Nosocomial Infections Among Hematopoietic Stem Cell Transplantation Recipients, With Impact on Procedure-Related Mortality

CARLO MARENA, MD; MARCO ZECCA, MD; MARIA LUISA CARENINI, RN; ANGELA BRUSCHI, RN;
MARIA LUGIA BASSI, RN; PIETRO OLIVIERI, MD; SILVIA AZZARETTI, MD; FRANCO LOCATELLI, MD

510

CONCISE COMMUNICATIONS

Negative-Pressure Monitoring of Tuberculosis Isolation Rooms Within New York State Hospitals

NICHOLAS PAVELCHAK, BS; KAREN CUMMINGS, MPH; RACHEL STRICOF, MPH;
ELIZABETH MARSHALL, PhD; MARGARET OXTOBY, MD; MATTHEW LONDON, MS

518

Influenza and Pneumococcal Vaccination Coverage Levels Among Hawaii Statewide Long-Term-Care Facilities

XIAO WEI CUI, MD, MPH; MARCIA M. NAGAO, MD, MPH; PAUL V. EFFLER, MD, MPH

519

Improved Compliance With Universal Precautions in the Operating Room Following an Educational Intervention

LYNN E. KIM, MPH; DONNA B. JEFFE, PhD; BRADLEY A. EVANOFF, MD, MPH;
SUNITA MUTHA, MD; BRAD FREEMAN, MD; VICTORIA J. FRASER, MD

522

Continued inside.

Tuesday

TODAY

MON TUE WED THU FRI SAT SUN

ACTION RECORD 1 UNITS



TODAY

MON TUE WED THU FRI SAT SUN

Wednesday

TIME SCHEDULE

ACTION RECORD

1 UNITS



Bacterial BarCodes, Inc.

The Experts Lane in Bacterial Fingerprinting™

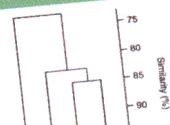
DiversiMap Report

Name: Fred Flintstone
 Company: The Rock Pile
 User ID: flintstone@rockpile.com
 Analysis name: Rock Analysis #1
 Job number: R1001
 Date: March 6, 2001

Fingerprint information

Lane	Primer	Genus	Species	Sample ID	Compared
1		1-kb ladder			No
2	Uprime-B1	Salmonella	typhimurium	699	Yes
3	Uprime-B1	Salmonella	choleraesuis	14028	Yes
4	Uprime-B1	Salmonella	darbin		Yes
5	Uprime-B1	Salmonella	newport		No
6	Uprime-B1	Salmonella	typhimurium		No
7		Negative control			No
8		1-kb ladder			No

Results



INFECTION CONTROL AND HOSPITAL EPIDEMIOLOGY™

CONTENTS

Continued from cover

Using Epidemiology to Target Staff Influenza Vaccination Programs MARGARET L. RUSSELL, MD, PhD; CHERYL A. FERGUSON, RN, BN	525
Glove Reinforcement: An Alternative to Double Gloving SADIR ALRAWI, MD; IYAD HOUSHAN, MD; RADHAKRISHNAN SATHEESAN, MD; RAMANATHAN RAJU, MD; JOSEPH CUNNINGHAM, JR, MD; ANTHONY ACINAPURA, MD	526
LETTERS TO THE EDITOR	
Parents as a Vector for Nosocomial Infection in the Neonatal Intensive Care Unit BETH WITTRICK, RN; MARY ALICE LAVIN, RN; DEIRDRE PIERRY, RN; RICHARD THOMSON, RN; REBECCA WURTZ, MD	472
The Economic Impact of Influenza in a University Hospital Setting THOMAS D. SZUCS, MD, MBA, MPH; CHRISTIAN RUEF, MD; DANIELA MÜLLER; E. SOKOLOVIC, MD; IRIS BEELER, MD; WOLFGANG OSTERMAYER, MD	472
Nosocomial <i>Mycobacterium chelonae</i> Infection in Laparoscopic Surgery CAMILLA RODRIGUES; AJITA MEHTA; URVASHI JHA; MANOJ BHARUCHA; FARAM D. DASTUR; TEHEMTON E. UDWADIA	474
Optimal Frequency of Changing Intravenous Administration Sets: Is It Safe to Prolong Use Beyond 72 Hours? (with reply) ALEJANDRO E. MACÍAS, MD; ISSAM RAAD, MD	475
Frequency of Intravenous Administration Set Changes and Bacteremia: Defining the Risk (with reply) BARBARA D. GRAEBER, BSN, RN; ROBERT R. MUDER, MD	476
The Identification and Investigation of Clustered Bacterial Isolates on Nursing Home Units PAUL J. DRINKA, MD; CATHY GAUERKE, MT; J. TODD FAULKS, RPH	476
Incidence and Mortality of Proven Invasive <i>Candida</i> Infections in Pediatric Intensive Care Patients ANTONIO RODRIGUEZ-NÚÑEZ, MD, PhD	477
MEDICAL NEWS GINA PUGLIESE, RN, MS; MARTIN S. FAVERO, PhD	528
SHEA NEWS ANDREAS VOSS, MD, PhD	532

To view abstracts of these articles,
visit us on the Internet at <http://www.slackinc.com/general/iche>

THE PUBLICATION OF ADVERTISING IN THE JOURNAL DOES NOT CONSTITUTE ANY GUARANTEE OR ENDORSEMENT BY THE SOCIETY FOR HEALTHCARE EPIDEMIOLOGY OF AMERICA OR SLACK INCORPORATED OF THE ADVERTISED PRODUCT OR SERVICE OR OF CLAIMS MADE BY THE ADVERTISER. THE PUBLICATION OF ARTICLES AND OTHER EDITORIAL MATERIAL IN THE JOURNAL DOES NOT NECESSARILY REPRESENT THE POLICY RECOMMENDATIONS OR ENDORSEMENT BY THE SOCIETY.

PUBLISHER: Infection Control and Hospital Epidemiology (ISSN-0899-823X, Canadian GST#129780466) is published exclusively by SLACK Incorporated 12 times a year. Address: 6900 Grove Rd., Thorofare, NJ 08086. Telephone: (856) 848-1000.

SHEA: 19 Mantua Rd., Mt. Royal, NJ 08061; telephone, 856-423-0087; fax, 856-423-3420; e-mail address, sheahq@talley.com.

COPYRIGHT 2001 The Society for Healthcare Epidemiology of America, Inc., and SLACK Incorporated. All rights reserved. No part of this publication may be reproduced without written permission from the publisher. Printed in the USA.

SUBSCRIPTIONS: Requests should be addressed to the publisher (except Japan). In Japan, contact Woodbell Incorporated, 4-22-11, Kitakasai, Edogawaku, Tokyo 134, Japan. Subscription rates in the United States and possessions: Individual: One year-\$109.00; Two years-\$169.00; Three years-\$229.00; Institutional: One year-\$139.00; Two years-\$209.00; Three years-\$269.00. Fellows: \$54.50 per year with proof of training status. Canada: add 7% Goods & Services tax; Overseas: add \$49.00 each year for delivery by air service. Single copies of current issues may be obtained for \$19.00.

INSTRUCTIONS TO AUTHORS: Authors may submit manuscripts prepared in accordance with the 1997 revision of the "Uniform Requirements for Manuscripts Submitted to Biomedical Journals." The Uniform Requirements has been published in several journals, including *Infect Control Hosp Epidemiol* 1997;18:457-464 and *Ann Intern Med* 1997;126:36-47. A digital version is available on our web site (<http://www.slackinc.com/general/iche/ichehome.htm>). Submit to ICHE Editorial Offices, Vanderbilt University School of Medicine, A-1131 Medical Center North, Nashville, TN 37232-2637, USA. All submissions must be accompanied by copyright form(s) signed by all authors (see January issue or our web site).

REPRINTS: All requests to reprint or use material published herein should be addressed to Karen Lambertson, SLACK Incorporated, 6900 Grove Rd., Thorofare, NJ 08086. For reprint orders and prices, contact Karen Lambertson at (856) 848-1000. Authorization to photocopy items for internal or personal use, or the internal or personal use of specific clients, is granted by SLACK Incorporated, provided that the base fee of \$1.00 per copy, plus \$.20 per page is paid directly to Copyright Clearance Center, 222 Rosewood Drive, Danvers, MA 01923; phone (978) 750-8400. This consent does not extend to other kinds of copying, such as for general distribution, resale, advertising and promotional purposes, or for creating new collective works.

CHANGE OF ADDRESS: Notice should be sent to the publisher 6 weeks in advance of effective date. Include old and new addresses with zip codes. The publisher cannot accept responsibility for undelivered copies. Periodicals postage paid at Thorofare, New Jersey 08086-9447 and at additional mailing offices. POSTMASTER: Send address changes to SLACK Incorporated, 6900 Grove Rd., Thorofare, NJ 08086.

INFECTION CONTROL AND HOSPITAL EPIDEMIOLOGY is listed in Index Medicus, Current Contents-Clinical Practice, Hospital Literature Index, Cumulative Index to Nursing & Allied Health Literature, Nursing Abstracts, Laboratory Performance Information Exchange System, and RNdex Top 100.

EDITORIAL OFFICES

Vanderbilt University School of Medicine
A-1131 Medical Center North
Nashville, TN 37232-2637
(615) 343-1095; (615) 343-1882 (FAX)
Email: iche@mcm.vanderbilt.edu

EDITOR

Michael D. Decker, MD, MPH

MANAGING EDITOR

Susan Cantrell

DEPUTY EDITOR

William R. Jarvis, MD

SENIOR ASSOCIATE EDITORS

C. Glen Mayhall, MD

Gina Pugliese, RN, MS

William Schaffner, MD

ASSOCIATE EDITORS

Donald A. Goldmann, MD

Didier Pittet, MD, MS

Andreas Widmer, MD, MS

SECTION EDITORS**Beyond Infection Control:****The New Hospital Epidemiology**

Bryan P. Simmons, MD

Stephen B. Kritchevsky, PhD

Memphis, Tennessee

Wing Hong Seto, MD

Hong Kong

Disinfection and Sterilization

William A. Rutala, PhD, MPH

Chapel Hill, North Carolina

Emerging Infectious Diseases

Larry J. Strausbaugh, MD

Portland, Oregon

Robert W. Pinner, MD

Atlanta, Georgia

From the Laboratory

Marcus Zervos, MD

Royal Oak, Michigan

Fred C. Tenover, PhD

Atlanta, Georgia

Information Management

John A. Sellick, DO

Buffalo, New York

The International Perspective

Mary D. Nettleman, MD, MS

Richmond, Virginia

Issues in Surgery

James T. Lee, MD, PhD

St. Paul, Minnesota

Medical News

Gina Pugliese, RN, MS

Chicago, Illinois

Martin S. Favero, PhD

Irvine, California

Practical Healthcare Epidemiology

Loreen A. Herwaldt, MD

Iowa City, Iowa

SHEA News

Andreas Voss, MD, PhD

Nijmegen, The Netherlands

Statistics for Hospital Epidemiology

David Birnbaum, PhD, MPH

Sidney, British Columbia, Canada

Topics in Long-Term Care

Philip W. Smith, MD

Omaha, Nebraska

Topics in Occupational Medicine

David Weber, MD, MPH

Chapel Hill, North Carolina

INFECTION CONTROL AND HOSPITAL EPIDEMIOLOGY™

EDITORIAL ADVISORY BOARD

- | | |
|--------------------------------------|-------------------------------------|
| Jacques F. Acar, MD | Paris, France |
| J. Wesley Alexander, MD | Cincinnati, Ohio |
| Paul Arnow, MD | Chicago, Illinois |
| Graham A.J. Ayliffe, MD | Birmingham, United Kingdom |
| Neil L. Barg, MD | Yakima, Washington |
| Manuel Bastanzuri, MD | Havana, Cuba |
| Elizabeth Ann Bolyard, RN, MPH, CIC | Atlanta, Georgia |
| John M. Boyce, MD | Providence, Rhode Island |
| Professor Dr. Ilja Braveny | Munich, Germany |
| Christian Brun-Buisson, MD | Creteil, France |
| Charles Bryan, MD | Columbia, South Carolina |
| Donald E. Craven, MD | Boston, Massachusetts |
| Sue Crow, MSN, RN, CIC | Shreveport, Louisiana |
| Franz Daschner, MD | Freiburg, Germany |
| Leigh G. Donowitz, MD | Charlottesville, Virginia |
| Charles E. Edmiston, Jr., PhD | Milwaukee, Wisconsin |
| Theodore C. Eickhoff, MD | Denver, Colorado |
| Bruce Farber, MD | Manhasset, New York |
| Victoria J. Fraser, MD | St. Louis, Missouri |
| Peter C. Fuchs, MD, PhD | Black Butte, Oregon |
| Richard A. Garibaldi, MD | Farmington, Connecticut |
| Robert Gaynes, MD | Atlanta, Georgia |
| Velvi Greene, PhD, MPH | Beer Sheva, Israel |
| David W. Gregory, MD | Nashville, Tennessee |
| David K. Henderson, MD | Bethesda, Maryland |
| Peter N.R. Heseltine, MD | Los Angeles, California |
| Karen Hoffmann, RN, CIC, MS | Chapel Hill, North Carolina |
| Marguerite McMillan Jackson, RN, PhD | San Diego, California |
| Janine Jagger, MPH, PhD | Charlottesville, Virginia |
| Douglas S. Kernodle, MD | Nashville, Tennessee |
| Robert H. Latham, MD | Nashville, Tennessee |
| Lewis B. Lefkowitz, MD | Nashville, Tennessee |
| Hsieh-Shong Leu, MD, MSc | Taipei, Taiwan |
| Jack Levy, MD | Brussels, Belgium |
| Victor Lorian, MD | Bronx, New York |
| Dennis G. Maki, MD | Madison, Wisconsin |
| William J. Martone, MD | Bethesda, Maryland |
| Allison McGeer, MD | Toronto, Ontario, Canada |
| John E. McGowan, Jr., MD | Atlanta, Georgia |
| Jonathan L. Meakins, MD, DSc | Montreal, Quebec, Canada |
| Robert R. Muder, MD | Pittsburgh, Pennsylvania |
| Joseph M. Mylotte, MD, CIC | Buffalo, New York |
| Lindsay Nicolle, MD | Winnipeg, Manitoba, Canada |
| Juhani Ojajarvi, MD | Helsinki, Finland |
| Michael T. Osterholm, PhD, MPH | Minneapolis, Minnesota |
| Jan Evans Patterson, MD | San Antonio, Texas |
| Sindy M. Paul, MD | Trenton, New Jersey |
| Michael A. Pfaller, MD | Iowa City, Iowa |
| Samuel Ponce de Leon, MD, MSc | Mexico City, Mexico |
| Isaam Raad, MD | Houston, Texas |
| Manfred L. Rotter, MD, DipBact | Vienna, Austria |
| Theodore Sacks, MD | Jerusalem, Israel |
| William E. Scheckler, MD | Madison, Wisconsin |
| Kent Sepkowitz, MD | New York City, New York |
| Denis Spelman, MD | Prahan Victoria, Australia |
| Michael L. Tapper, MD | New York, New York |
| Clyde Thornsberry, PhD | Brentwood, Tennessee |
| Professor Leonid P. Titov | Minsk, Republic of Belarus |
| Timothy R. Townsend, MD | Millwood, Virginia |
| Antoni Trilla, MD, PhD | Barcelona, Spain |
| Professor Wang Shu-Qun | Beijing, People's Republic of China |
| J. John Weems, Jr., MD | Greenville, South Carolina |
| Robert A. Weinstein, MD | Chicago, Illinois |
| Professor Dr. W. Weuffen | Greifswald, Germany |
| Sergio B. Wey, MD | São Paulo, Brazil |
| Rebecca Wurtz, MD | Evanston, Illinois |

SLACK Incorporated

6900 Grove Road
Thorofare, New Jersey 08086
(856) 848-1000

Executive Vice President

Richard N. Roash

Vice President, Publishing Operations

John C. Carter

Editorial Director

Jennifer Kilpatrick

Production Editor

Shirley P. Strunk, ELS

Associate Editor

Bileen C. Anderson, ELS

Editorial Assistant

Rachel A. Steffes

Circulation Manager

Lester J. Robeson, CCCC

Production Director

Christine Malin

Production Coordinator

Joanne Patterson

Vice President, U.S. Advertising

Yvonne A. Goss

Pharmaceutical Group Sales Director

Michael LoPresti

Advertising Sales Representative

Michael Rattery

Advertising Sales Coordinator

Andrea Zgalich

Classified/Recruitment Sales Manager

Kelly Wark

Classified/Recruitment Sales Representative

Jennifer Fayter

Infection Control/ Employee Health Manager

NORTHWEST HOSPITAL CENTER, a community-based hospital providing extensive healthcare services to the northwest Baltimore corridor, has an excellent **FULL-TIME opportunity immediately available.**

The selected candidate will be a MD-licensed RN with BSN (MSN preferred) and current certification in Infection Control (CIC). A minimum of 2-3 yrs. recent management exp. and min. of 3 yrs. exp. in acute care infection control req. Employee Health & Worker's Comp. exp. preferred.

We offer competitive salary and benefits package, including a modern work environment away from the traffic and congestion of downtown Baltimore. Please fax (410) 521-7269 or mail resume, which must include salary requirements, to

**Human Resources Dept.,
Northwest Hospital Center,
5401 Old Court Road,
Randallstown, MD 21133**
or you may e-mail:
**NW-resumes@
lifebridgehealth.org.**



**NORTHWEST
HOSPITAL**
a LifeBridge Health center

EOE, M/F.

www.lifebridgehealth.org

Fit Test TB Masks the Easy Way!

...with the PORTACOUNT® Plus Respirator Fit Tester
and N95-Companion™ from TSI.

- Quantitatively fit tests any N95 disposable respirator.
- Easy to use...any other way is the hard way!
- Provides confidence in fit test results.
- Replaces subjective and tedious Bitrex and saccharin methods.
- Complies with OSHA's TB guidelines.
- Windows®-based software automates fit tests and maintains records.
- Also fit tests respirators used by hospital maintenance workers.



TSI Incorporated Health and Safety Instruments

P.O. Box 64394
St. Paul, MN 55164 USA
Tel: **800 926 8378**
or 651 490 2760
Fax: 651 490 2704

Website: www.tsi.com
E-mail: health.safety@tsi.com



Mothers.

Spouses. (maybe)

Medical Matrix.

What do they have in common? You place your trust in them. When searching the Internet for credible medical information, you need a resource you can trust. *The Lancet* quotes that "Medical Matrix is the most comprehensive compendium of reliable medical information on the Internet."

MEDICAL MATRIX LLC.
<http://www.medmatrix.org>

The largest, peer-reviewed directory to the medical Internet.

Free registration.

RESPECT

We don't promise it.
We deliver it.

MHUMC attracts the nation's top talent to Savannah. Delivering real opportunity, balance & rewards makes them want to stay.

Director of Infectious Diseases

Candidate will be responsible for managing and directing the Center for Infectious Diseases, which includes identifying epidemiologic issues, outbreaks, and intervenes to correct deficiencies. Acts as a consultant for all issues to employees, physicians, and community.

RN with certification in Infection Control and 5 plus years' management experience. Candidate must have excellent communication and leadership skills.

We offer a competitive compensation and benefits package.

Contact: **Memorial Health University Medical Center, Attn: Frank Thayer, Director of Recruitment, P.O. Box 23089, Savannah, GA 31403. Call (877) 693-5069 (toll-free) or (912) 350-8243. FAX: (912) 350-3383. EOE M/F/D/V**

Memorial
HEALTH
feel better.
www.memorialhealth.com